

Bradford County 4-H Member Project Book



Name: _____

Age: _____
(as of Sept 2023)

Date of Birth: _____

Jr Int Sr

Years in 4-H _____

Grade in School: _____

Primary Club: _____

Project(s): _____

Exhibitor Signature: _____ Date: _____

Parent/Guardian Signature: _____ Date: _____

Club Leader Signature: _____ Date: _____



*****MUST BE HANDWRITTEN IN 4-H'ers OWN HANDWRITTING**

Expenses (Continued) *List animals purchased, all feed, equipment, bedding, shampoo, dues, etc.*

Description of Product Purchased	Date	Quantity	Total Cost
			\$
			\$
			\$
			\$
			\$
			\$
			\$
			\$
			\$
			\$
			\$
			\$
			\$
			\$
			\$
			\$
			\$
			\$
			\$
			\$
			\$
			\$
			\$
			\$
			\$
			\$
			\$
			\$



Ending Inventory (*Remaining items to be filled out AFTER fair*)

List all assets; equipment, materials, supplies and animals you will have at the end of this project. Example: Heifer, show box, blower, show halter, etc....

Description of Item	Quantity	Estimated Value
		\$
		\$
		\$
		\$
		\$
		\$
		\$
		\$
		\$
		\$
		\$
		\$
		\$
		\$
		\$
		\$
		\$
		\$
		\$
		\$
		\$
	Grand Total	\$

Ending Expense Summary

Project Expenses	From Section B	\$
Beginning Inventory	From Section C	\$
Total Cost	Add section B & C	\$
Project Income	From Section D	\$
Ending Inventory Total	From Section E	\$
Ending Income/Value	Add section D and E	\$
Profit/Loss	Subtract Total Cost from Ending Income/value	\$

Project Photos *(maximum of 6 minimum of 3 with captions)*

Project Section H

Project Photos *(maximum of 6 minimum of 3 with captions)*

Project Photos *(maximum of 6 minimum of 3 with captions)*

PROJECT STORY OUTLINE

You will make an outline for your project story first. It should include what you have learned about your animal, safety practices you used, what you could do to improve your project, and the different skills you learned/used during your project. This is an outline form- complete sentences are not required.

All project story outline subtopics must be complete to receive full points

I. Introduction: Introduce your story and capture your reader's attention.

II. What did you learn?

- A.
- B.
- C.

III. What safety practices did you use?

- A.
- B.
- C.



**Bradford County 4-H Community Service Record
2023-2024**

4-H Member: _____

4-H Club: _____

Description of Community Service Performed	Hours	Date Completed	Club Leader Initials

Total Hours _____

Record Book Directions

General Rules

4-H books will be submitted annually to the 4-H Office to be eligible for clover awards. Books will be evaluated based on:

- 1) Neatness
- 2) Completeness
- 3) Followed directions
- 4) **MUST BE HANDWRITTEN BY THE MEMBER**

PROJECT TABS Project Section (You will have additional tabs for each project)

Each project you are enrolled in will need to have these pages. Tabs are labeled “Breed”, “Steer”, “Swine”, “Photography” or whatever you are enrolled in.

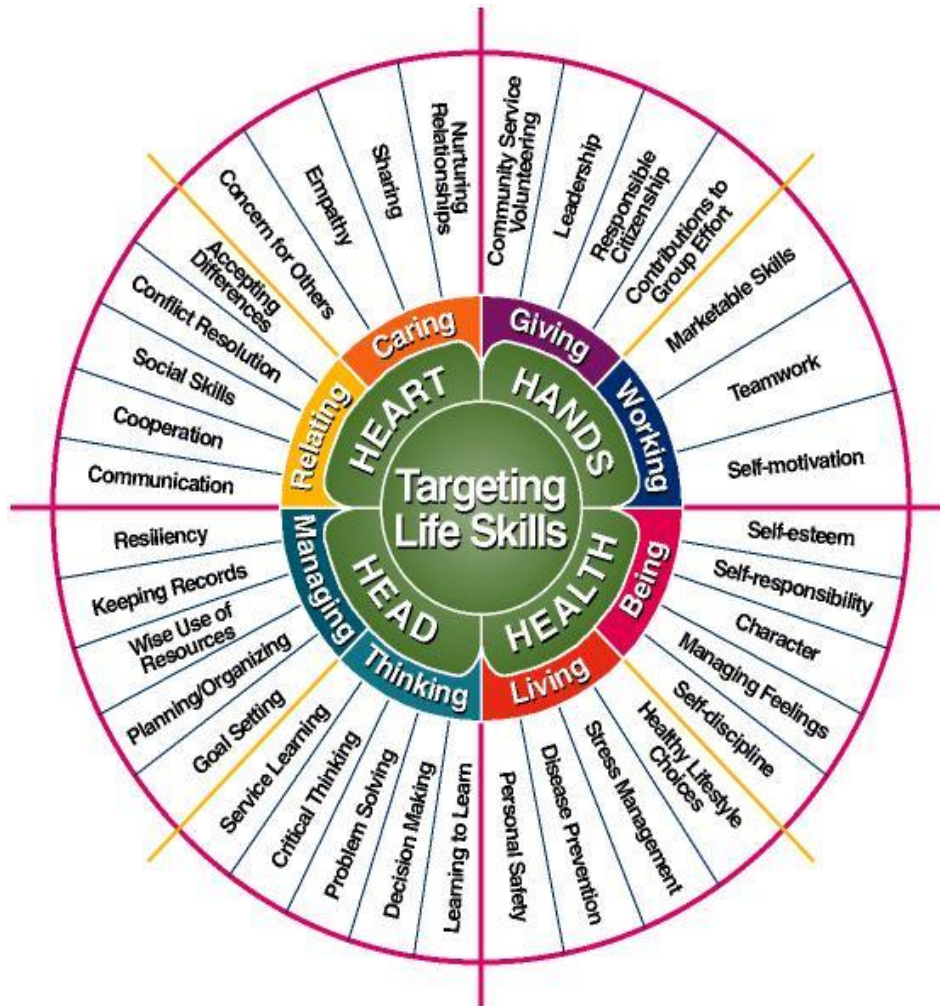
- Goals.** This is an agreement between you, your project leader, and your parents about what you want to learn and how they will help you. Obtain the required signatures.
- Project Expenses.** All purchases related to your project. This includes animal purchases, health supplies, and feed for livestock. For other projects list supplies you purchases such as memory card for your camera in a photography project, T-Shirt and paint supplies for a creative arts project, or ingredients for a cake for a food related project.
- Beginning Inventory.** List all items you have on September 1st of your project. This will include Show halters, grooming chutes, clippers or other equipment you had at the beginning of your project.
- Project Income.** List all income from your project. This will include the sale of your market animal, sale of offspring or sale of equipment. Non-livestock projects this may include food made and sold or photos sold. If no income put “none”.
- Financial Summary.** This is a summary of money and valuable items related to your project. Ending inventory is everything related to your project on August 31st. **DO NOT FILL IN ENDING INVENTORY BEFORE FAIR, YOU WILL LOSE POINTS.** Remaining items are carried from section B and C in the project section and added or subtracted as directed.
- Health Records.** List all medications that you give to your animal including the withdrawal times. List every time you weigh your animal.
- Project Highlights.** Look back at your project goals. Did you learn what you planned to learn? What problems did you have to solve? What were your main successes? What would you do differently if you did it again, knowing what you know now?
- Project Photos.** These are photos related to your project. Your project and you should be in “action mode”. One sentence caption per photo.

RECEIPT TAB All livestock receipt may be inserted here.

STORY TAB My 4-H Story

- Narrative.** Write your story for the year in narrative form. Write as though you are actually talking to the reader. Your story should have four parts and be no longer than two sides of one page.
 1. Introduce yourself
 2. Write about your projects. Do not repeat the project highlights.
 3. Share your 4-H club experiences and how you were involved in your community and school
 4. Write about how you have changed as a result of your 4-H experience.

FORM TAB Community Service log (10 hour minimum) and Learning Activities Log (4 activities per project)



Extension programs are open to all regardless of race, color, sex, age, handicap, or national origin. In accordance with the Americans With Disabilities Act, any person needing a special accommodation to participate in any activity should contact the Bradford County Cooperative Extension Office at (904)966-6224 a minimum of seven (7) days prior to the event so that proper consideration may be given to the request. Hearing impaired persons may access the foregoing telephone number by contacting the Florida Relay Service at 1(800)955-8770 (voice) or 1(800)955-8771 (TDD).

By Debbie Nistler, Bradford County 4-H Agent 9/14

Bradford Project Book Scoring System

Name: _____

Jr (age 8-10) _____ Int (ages 11-13) _____ Senior (ages 14-18) _____

Section	Possible Points	Earned Points
Cover	5	
Section A	15	
Section B/C/D	15	
Section E (to be completed after fair)	0	0
Section F	5	
Section G	15	
Section H	10	
4-H Story	30	
Community Service & Learning Activities	5	
	TOTAL	