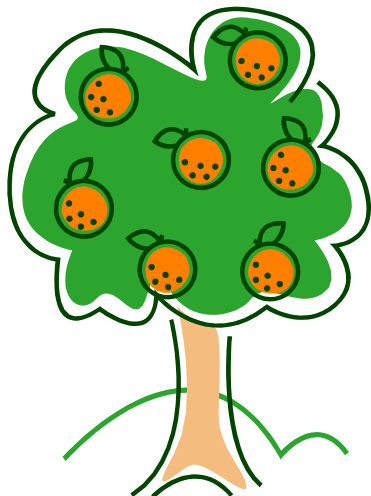


2023-2024



Charlotte County 4-H

Cloverbud Citrus Project Record Book



Paste Exhibitor
Photo Here

Name: _____

Street Address: _____

City, State, Zip: _____

Number of years in 4-H: _____ Birthdate: _____

Phone Number: _____

___ Cloverbud (5-7 years old)

___ Junior (8-10 years old)

___ Intermediate (11-13 years old)

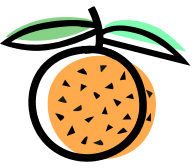
___ Senior (14-18 years old)

Charlotte County 4-H Office

514 E Grace Street

Punta Gorda, FL 33950

(941)833-3836



2023-2024 Charlotte County 4-H

Citrus Project Rules & Regulations

Eligibility:

This project is open to all youth aged 5-18 who are enrolled in Charlotte County 4-H through 4honline.com. Age for the project this year is determined as of April 1, 2023.

Requirements

1. Entries shall be limited to one tree per individual. Contestants may only show the tree issued to them by Charlotte County 4-H in June 2023.
2. Charlotte County 4-H and/or the Charlotte County Fair has the right to reject entries of inferior quality or diseased plants, as well as those missing identification tags. If an identification tag is issued in June, the original tag must be present on the tree at the time of the fair.
3. Transplanting your citrus tree into the ground or using a hydroponic system is not permitted.
4. **The citrus tree must be planted in a pot provided by the exhibitor.** If you choose to decorate your pot when exhibited at the Fair, it will not reflect (negatively or positively) in your overall score when judged. Decorations may not exceed the top of the container, and nothing may be placed under the container to make the tree taller.
5. All participants in the citrus tree project will be **required** to participate in at least 70 percent of the citrus club meetings and activities including citrus related workshops, citrus field trip, buyers letter workshop, and any other 4-H Citrus club events.
6. The following projects must also be completed in order to enter your tree into the fair: (1) record book, (1) educational backboard or presentation and (2) sets of buyer's letters (three unsealed, stamped and addressed buyers' letters will be due for each set) to be turned in to the 4-H Office. In addition, all members must participate in individual Interview Judging at the fair. Late entries of any projects or failure to make-up any activities will result in disqualification.*
7. All record books must be completed in the exhibitor's handwriting.
8. Each exhibitor is solely responsible for caring for their tree both at home and during the fair.
9. All citrus exhibits as well as the required record book and backboard/presentation will be delivered to the Charlotte County Fairgrounds at tree drop off (date tbd).
10. **All trees will be inspected by the Florida Department of Agriculture when dropped off at the fair. Any tree that possesses greening or any other disease determined risky by the inspectors will be disqualified and must be removed immediately. All decisions made by FDACS are final and may not be challenged.**
11. Judging will consist of a different class for each variety of tree. There must be 4 trees in each class or multiple varieties will be combined to form a class. Cloverbuds may exhibit their tree but will automatically receive a participation ribbon.
12. First place winners from the specified classes will be considered for overall grand champion tree. The class receiving the grand champion citrus tree will then be represented by the second-place tree of that class. From those classes the Reserve Grand Champion will be chosen.
13. Contestants selling their tree will be required to: Provide written care instructions for the buyer, as well as write a personalized thank-you letter to the buyer. All thank you letters must be turned into the 4-H Agent, 4-H Program Assistant, or the Citrus Club Leader at Fair Clean-Up. The letter must be in an unsealed envelope, stamped, and addressed to your buyer.
14. Exhibitors are responsible for recruiting their own buyers.

15. At any time, exhibitors may be disqualified by Charlotte County 4-H or the Charlotte County Fair due to inappropriate behavior.
16. In the event of extenuating circumstances which are beyond the 4-H'ers control, (such circumstances might include but would not be limited to: accidents, illness, school activities, and other 4-H activities) Charlotte County 4-H reserves the right to review and make final determination as to whether or not a 4-H'er has met the requirements to participate.
17. Any member who receives a tree but does not complete all requirements may not be eligible to raise a tree in the coming year as they will not be considered a member in good standing. **Even if your tree does not make it to the fair, you still need to complete the record book and educational backboard/presentation as well as Interview judging.

Please remember that the purpose of the Charlotte County 4-H Citrus program is to conduct activities which are educational and promote good citizenship.

Please sign below if you have read and fully understand the stated rules and requirements of the Charlotte County 4-H Citrus Project. I have also read and fully understand the Charlotte County 4-H Citrus Rules and Regulations. All members are required to follow these rules as stated. Failure to do so may result in disqualification from exhibition or participation in Charlotte County 4-H and/or the Charlotte County 4-H Citrus Program.

Exhibitor/Date

Exhibitor's Parent/Guardian/Date



Youth Citrus Tree Project Agreement



The exhibitor is responsible for caring for the citrus tree, which will include watering, fertilizing, insect and pest control, as well as grooming and showing. The Exhibitor will use this project as an educational tool to learn skills needed in the horticulture industry. This project will also help the Exhibitor to accept success and failure as a learning experience. The Exhibitor will keep accurate records on the citrus tree.

I accept and understand these responsibilities.

Exhibitor's Signature

Date

The Parent(s) are responsible for providing financial help if needed, along with the assistance and encouragement while the Exhibitor is raising the tree. A parent must be in possession of any chemicals etc. given to care for the tree and must assist the child at all times when using these said chemicals.

I accept and understand these responsibilities.

Parent/Guardian Signature

Date

The 4-H Agent is responsible for giving the Exhibitor assistance when needed and guiding the exhibitor throughout the project.

I accept and understand these responsibilities.

Agent's Signature

Date

Setting Goals...

What are your goals this year? What do you want to accomplish with your project?

Did you accomplish these goals? Explain why or why not.



About My Citrus Tree

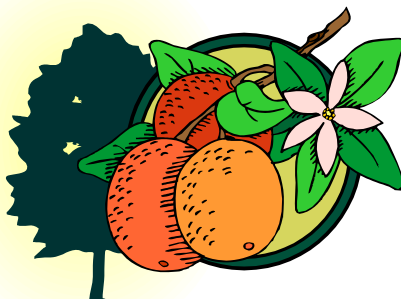
1. Date received: _____
2. Variety of tree: _____
3. Type of Potting soil used: _____
4. My tree is from: _____
5. Beginning Cost: _____

Research to find the answers to the following questions:

6. How do you know when your fruit is ripe?

7. Describe the fruit from your tree: _____

8. What are some things that you can make with citrus fruit?
(food and non-food items): _____



Project Photos

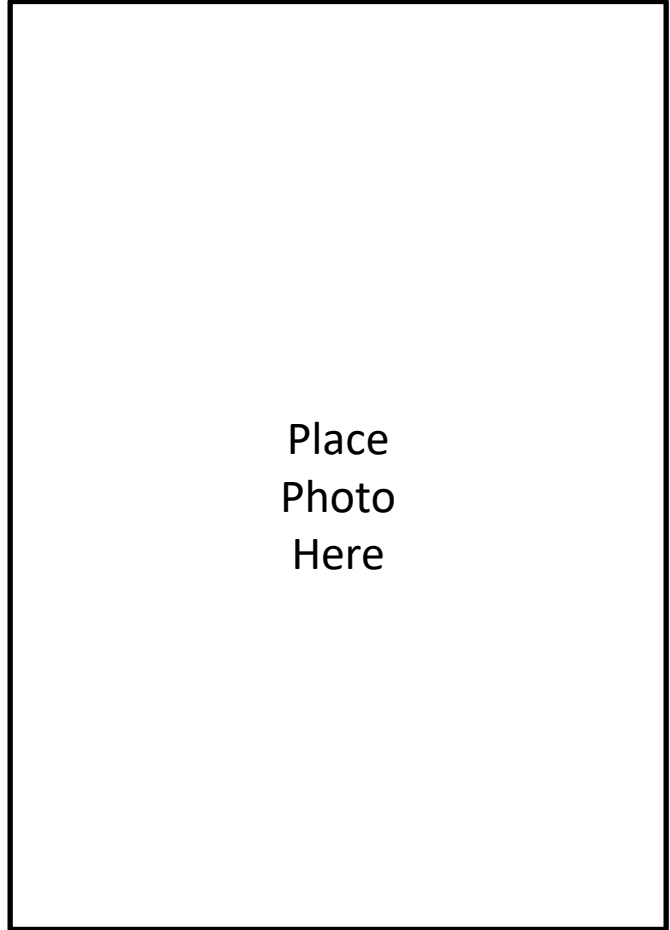
Please include a photo as well as a caption
for each month.

June



Place
Photo
Here

July



Place
Photo
Here

Project Photos

Please include a photo as well as a caption
for each month.

August

Place
Photo
Here

September

Place
Photo
Here

Project Photos

Please include a photo as well as a caption
for each month.

October

Place
Photo
Here

November

Place
Photo
Here

Project Photos

Please include a photo as well as a caption
for each month.

December

Place
Photo
Here

January

Place
Photo
Here

Record of Expenses for Citrus Tree Project



Record your expenses for this project below.
(This could include soil, container, envelopes, stamps etc.)

Date	Item	Cost

Total Cost \$ 13



Additional Project Pictures

Include pictures of your project from start to end. Include captions with each picture.

Sample Educational Backboard Topics

The topics below are recommended but not absolute. You may deviate from these topics but please choose something related to citrus.

- History of Citrus in Florida
- Varieties of Citrus in Florida
- Common uses and products of citrus
- Citrus By-Products
- Jobs related to the citrus industry
- How would you market your citrus tree for a profit if you were in the nursery business?
- Citrus Canker & It's affects on the citrus industry
- Citrus Greening & It's affects on the citrus industry
- Freezes & It's affects on the citrus industry
- Pests of citrus and their effect on the citrus tree and fruit
- From Tree to Table
- The impact of citrus on the economy of DeSoto County
- How has technology affected the citrus industry?
- The need for water conservation in today's groves
- From seed to orange juice...the process of producing citrus fruit from the birth of a new tree (day 1)
- Varieties and rootstocks
- Diseases
- Insects and Mites
- Fertilization
- Irrigation
- Cold and Freeze Protection
- Mechanical Harvesting

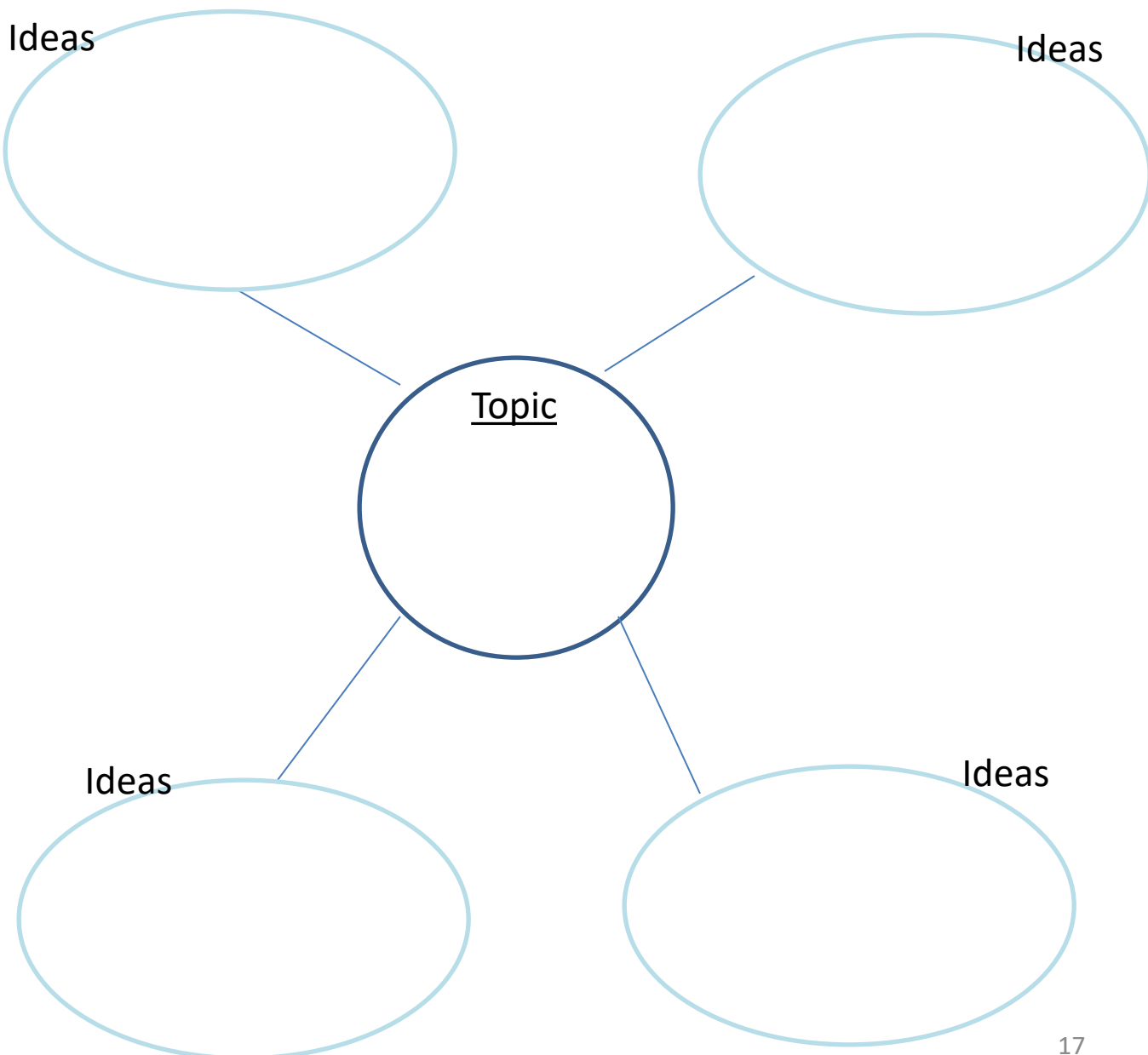
****All displays must include both photos and text.**



Educational Backboard

Choose 1 citrus related topic which you are interested in. Research that topic and complete an educational backboard that contains information and pictures related to your topic to display with your citrus tree.

Topic: _____



Pest & Disease Identification

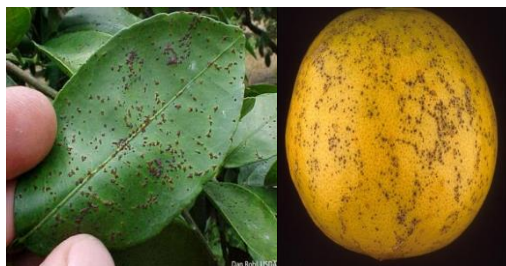
Draw lines to match the picture with the correct name:



Citrus Black Spot



Citrus Greening



Citrus Greasy Spot

Citrus Black Spot



Citrus Canker



Citrus Melanose

Pest & Disease Identification

Draw lines to match the picture with the correct name:



Asian Citrus Psyllid



Easter Lubber Grasshopper



Citrus Leafminer



Sooty Mold



Citrus Rust Mite



Citrus Red Mite

Pest & Disease Identification

Draw lines to match the picture with the correct name:



Root Rot



Mealybug



Orangedog

Citrus Whitefly



Root Weevil



UF

How To Treat for Pests & Disease

Pest or Disease Name	Treatment
Melanose	Copper Fungicide (use label rate)
Greasy Spot	Copper Fungicide (use label rate) Petroleum Oil (Use label rate. Do not apply when temperatures exceed 94 degrees Fahrenheit)
Citrus Canker	No chemical control
Citrus Rust Mite	Petroleum Oil 97+% (Do not apply if trees are wilting or in a near wilt state. Do not apply within 3 weeks of sulfur. Do not apply when temperatures exceed 94 degrees Fahrenheit)
Spider Mites	Petroleum Oil 97+% (Do not apply if trees are wilting or in a near wilt state. Do not apply within 3 weeks of sulfur. Do not apply when temperatures exceed 94 degrees Fahrenheit)
Mealybugs, Whiteflies & Aphids	Malathion
Citrus Canker	Copper Fungicide (use label rate)

Parts of a Citrus Tree

Directions: Label the parts of the tree and color.

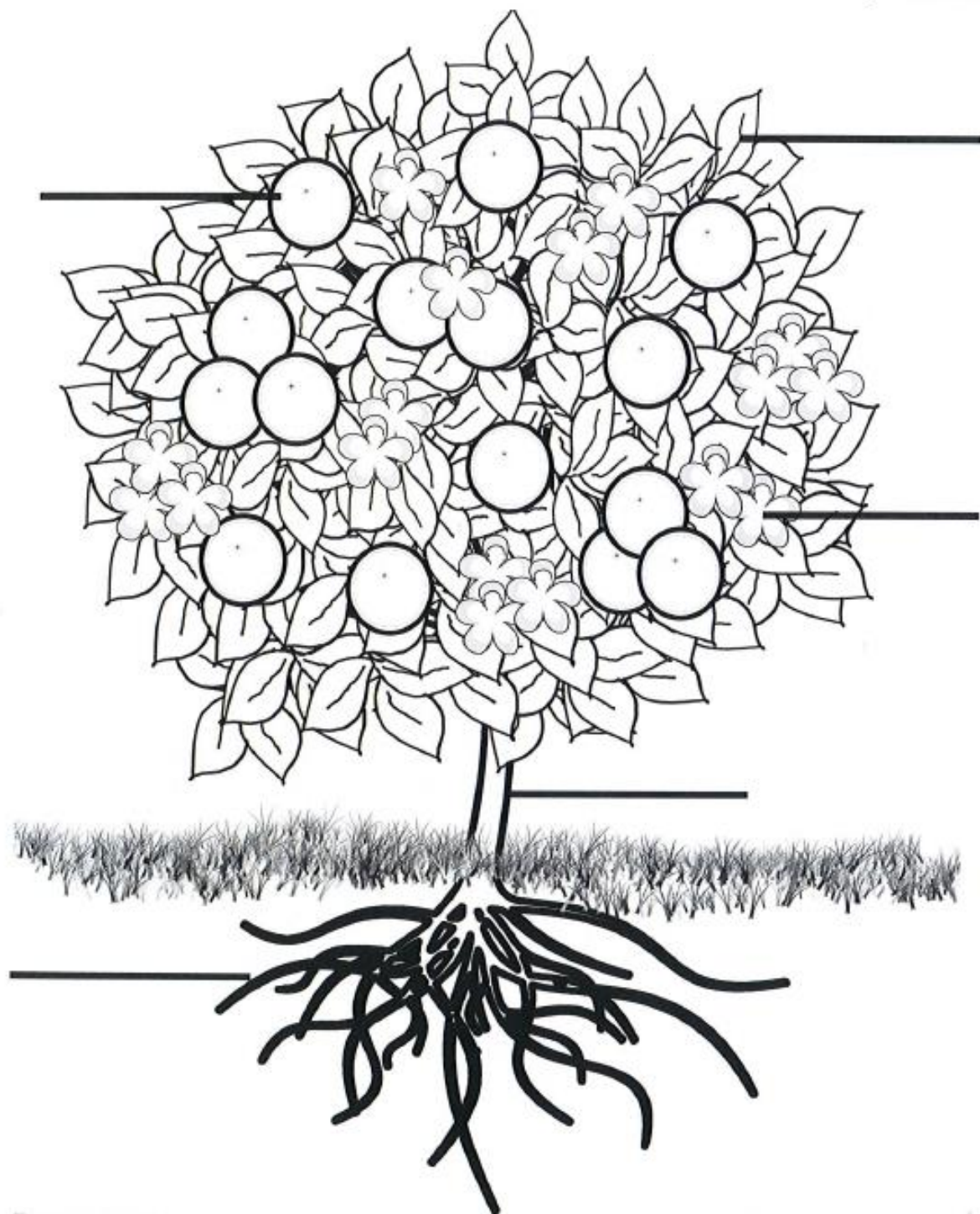
Roots

Leaves

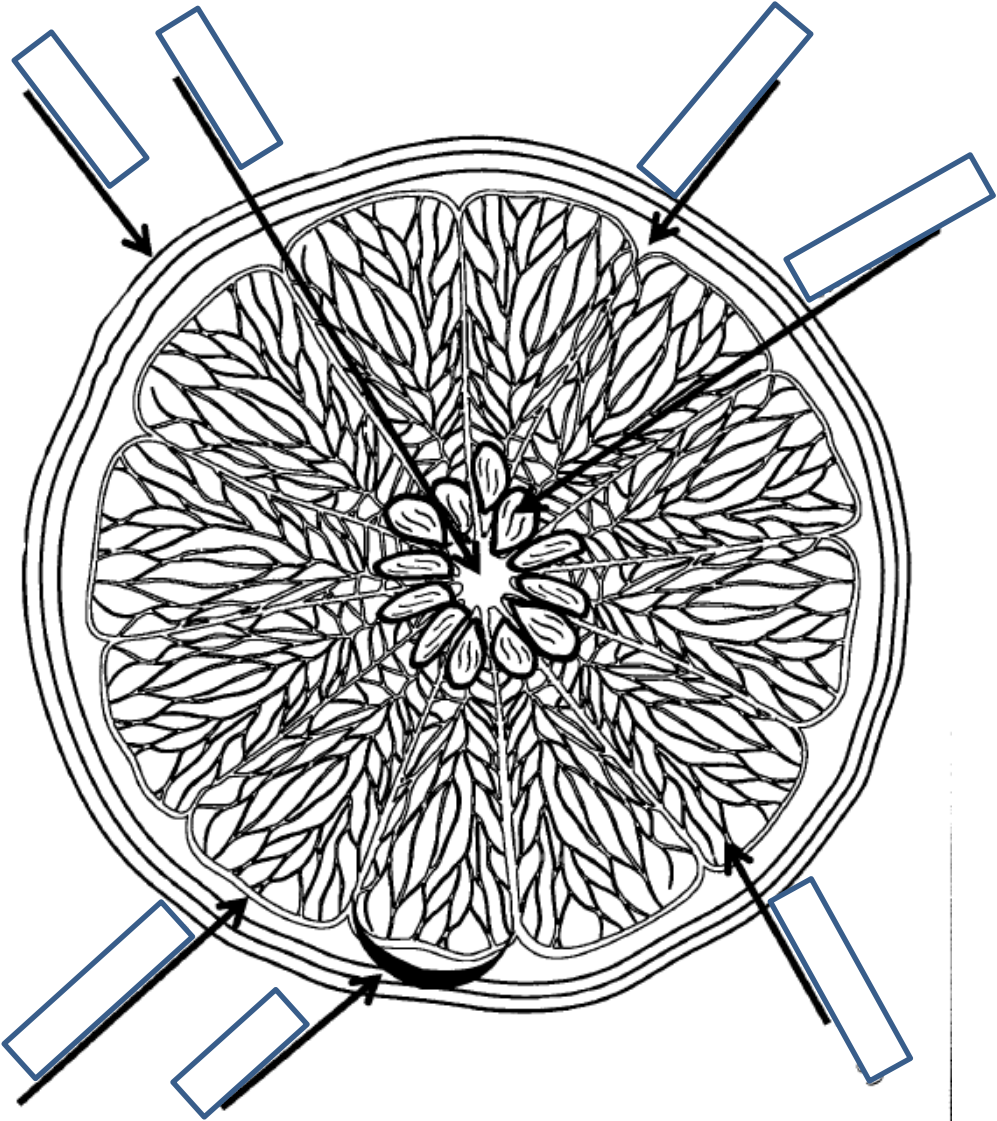
Fruit

Trunk

Flower (Blossom)



Parts of an Orange



Rind
Core
Segment Covers
Albedo

Segments
Juice Vesicles
Seeds

