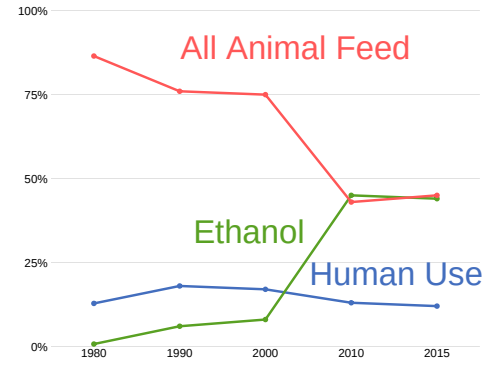


Beef's Water Footprint

IS IT AS LARGE AS THEY SAY?

Research indicates large variation in estimates of beef production's water use.

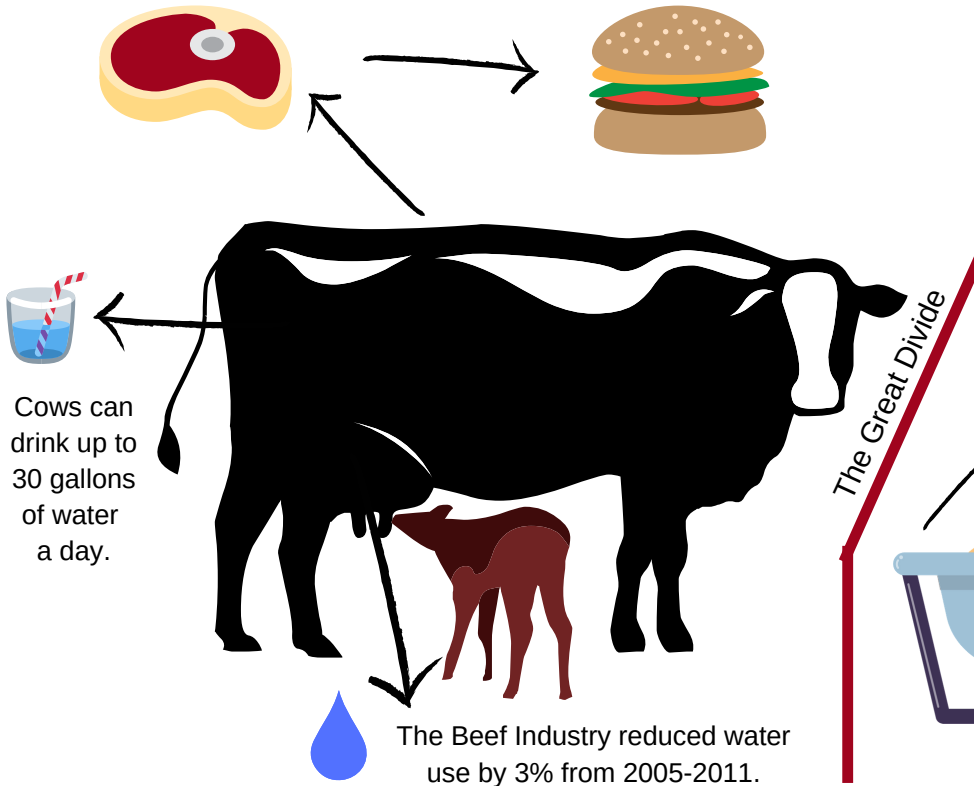
More water is dedicated to grains, fruits, and vegetables incorporated into meals than is to beef.



Production of corn used for animal feed has been steadily declining.

Only 7% of a cow's diet is human-edible feed stuffs (corn).

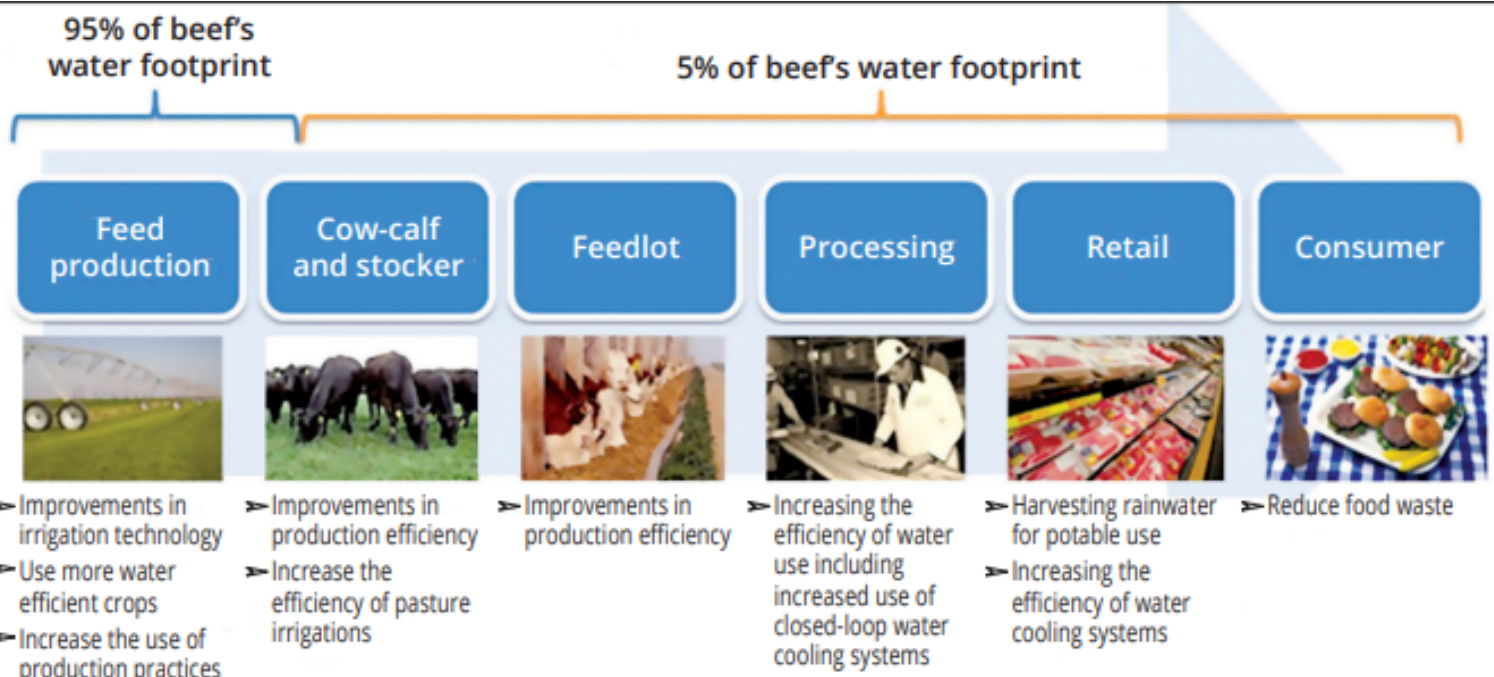
95% of beef's water footprint originates from feed production.



Cows can drink up to 30 gallons of water a day.

The Beef Industry reduced water use by 3% from 2005-2011.

Strategies to Reduce Beef's Water Footprint (Courtesy of NCBA)



*Photos by USDA, USDA NRCS and USDA ARS