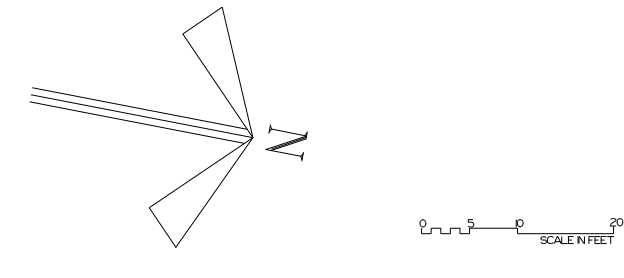
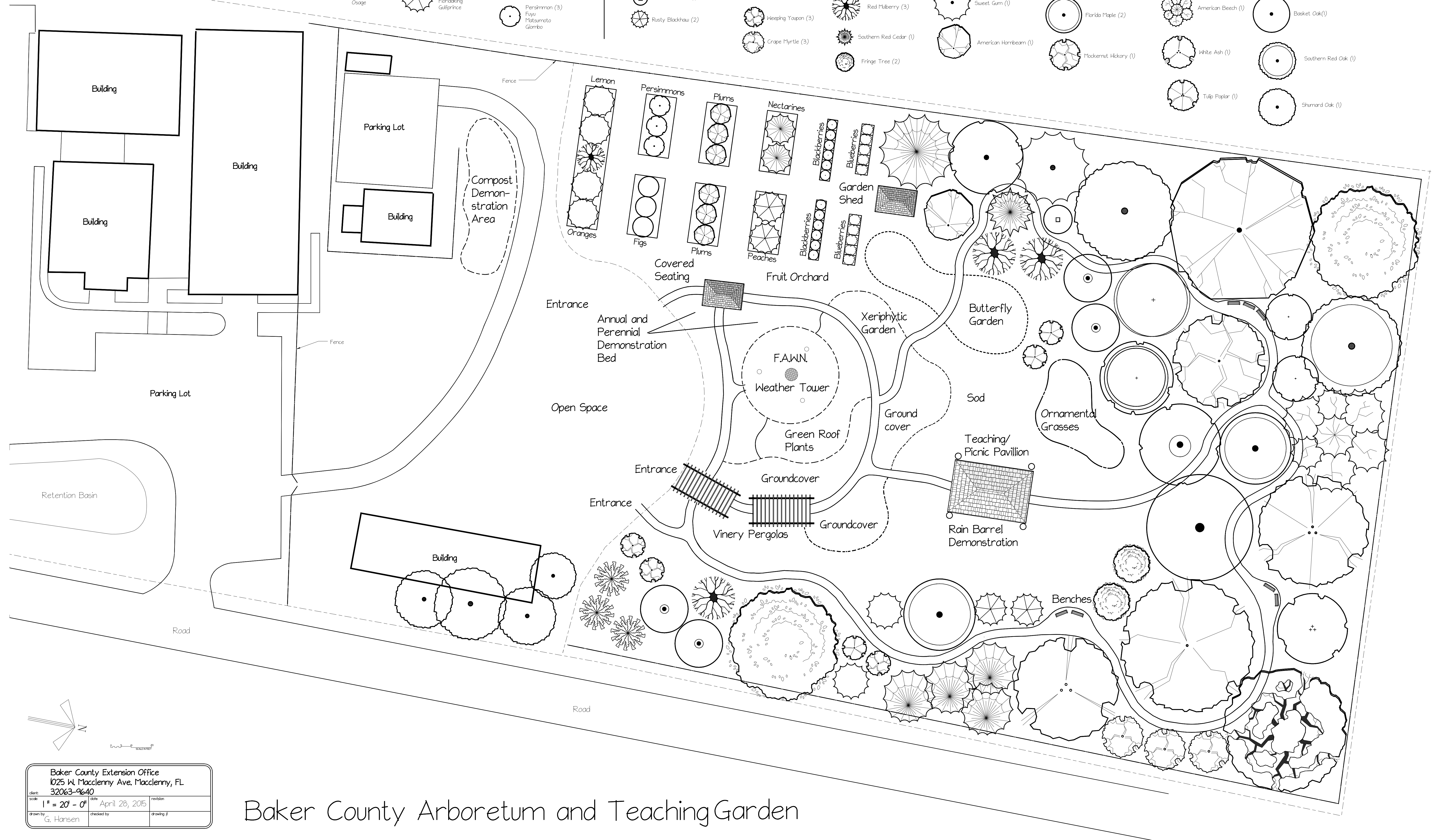


- Blueberries (10): Austin, Powderblue, Brightwell, Premier, Tibble
- Blackberries (2): Arapaho, Natchez
- Satsuma Orange (4)
- Meyer Lemon (1)
- Peaches (2): Floridking, Gulfprince
- Nectarines (2): Summit, Sunnyday
- Plums (6 total): Gulfrose (2), Gulfblaze (2), Byrongold (2)
- Figs (3): Brown Turkey, Jelly, LSU Purple
- Persimmon (3): Fuyu, Hatanomoto, Gonbo
- Cabbage Palm (3)
- Little Gem Magnolia (3)
- American Holly (2)
- Flatwoods Plum (1)
- Rusty Blackhaw (2)
- River Birch (2)
- Spruce Pine (1)
- Longleaf Pine (4)
- Weeping Yaupon (3)
- Grape Myrtle (3)
- American Basswood (1)
- Red Maple (4)
- Red Mulberry (3)
- Southern Red Cedar (1)
- Fringe Tree (2)
- Winged Elm (1)
- Pignut Hickory (1)
- Sweet Gum (1)
- American Hornbeam (1)
- Green Ash (1)
- Eastern Hophornbeam (1)
- Florida Maple (2)
- Hickernut Hickory (1)
- Black Walnut (1)
- White Oak (1)
- American Beech (1)
- White Ash (1)
- Tulip Poplar (1)
- American Elm (1)
- Live Oak (1)
- Basket Oak (1)
- Southern Red Oak (1)
- Shumard Oak (1)



Baker County Extension Office 1025 W. Macclenny Ave. Macclenny, FL 32063-9640			
client:	scale:	date:	revision:
	1" = 20' - 0"	April 28, 2015	
drawn by:	checked by:	drawing #:	
G. Hansen			

Baker County Arboretum and Teaching Garden