

The Baker Bulletin



The UF/IFAS Extension Office is available to help you with your farming, gardening, landscaping, and 4-H youth development needs by providing educational programming, free consultations and information. Contact us at:

UF/IFAS Extension Baker County

1025 W. Macclenny Ave. Macclenny, FL 32063

Phone: (904) 259-3520

Email: baker@ifas.ufl.edu

Hours: M—F 8:30 am to 5:00 pm (Closed Noon to 1:00 pm for Lunch)

County Agents

Alicia Lamborn, Horticulture Agent

Shaina Spann, 4-H Youth Development Agent

Alicia Halbritter, Agriculture & Natural Resources Agent



sfyl.ifas.ufl.edu/baker



blogs.ifas.ufl.edu/bakerco/



[Agriculture in North Florida](#)

[Baker County Garden Spot](#)

[Baker County 4-H](#)

September 2025



4-H Insectathon

p. 5

Horticulture

p. 2

Agriculture

p. 3

4-H Youth Development

p. 5



2025 Baker County Fair

p. 6

Programs & Events

- Sept 6 Calf Pulling Demonstration: Learn to Intervene with Difficult Calving. 9am-12pm at the Baker County Extension Office. Register here: <http://calfpulling.eventbrite.com>
- Online Florida-Friendly Landscaping - This free, self-paced, online course will guide you through the 9 principles to keep your yard and garden healthy using less time, money, and resources. Register here: <https://forms.gle/o87D5gYauQVQNQ2s7>
- Online Butterfly Gardening - Learn the basic garden design elements for a successful butterfly garden. Helpful resources and seeds for your garden included! Free, self-paced course. Register here: <https://forms.gle/o3SVghr6xtvwGQ637>



HIGHLIGHTS IN HORTICULTURE

2

By Alicia Lamborn, Environmental Horticulture Agent

EDIBLES TO PLANT IN September



Growing Tips:

Swiss Chard:

Popular varieties include Bright Lights, Bright Yellow, Fordhook Giant, Lucullus, and Red Ruby. Seeds can be sown in the fall, late winter, or early spring. An excellent alternative green for warm weather.

Harvest outer leaves when 8-10 inches long. Very susceptible to root-knot nematodes, but can be grown in containers using clean potting soil to avoid damage.

	North	Central	South
Easily Survives Transplanting	Arugula, Beets, Broccoli, Brussels Sprouts, Cabbage, Cauliflower, Chinese Cabbage, Collards, Endive, Kale, Kohlrabi, Lettuce, Strawberry, Swiss Chard	Arugula, Beets, Broccoli, Brussels Sprouts, Cabbage, Cauliflower, Chinese Cabbage, Collards, Eggplant, Endive, Kale, Lettuce, Peppers, Sugarcane, Strawberry, Swiss Chard, Tomatoes, Tropical Spinaches	Cabbage, Cauliflower, Chinese Cabbage, Collards, Eggplant, Endive, Kale, Lettuce, Peppers, Sugarcane, Swiss Chard, Tomatillo, Tomatoes, Tropical Spinaches
Transplant Carefully	Celery, Mustard, Spinach	Celery, Mustard, Pineapple, Spinach	Amaranth, Calabaza, Long Squash, Luffa, Mustard, Papaya, Passionfruit, Pineapple, Seminole Pumpkin, Sweet Potatoes
Use Seeds	Beans (bush, pole), Carrots, Onions (bulbing, bunching), Radish, Squashes, Turnips	Beans (bush, lima, pole), Carrots, Cucumbers, Onions (bunching), Radish, Squashes, Turnips	Beans (bush, lima, pole), Carrots, Cucumbers, Okra, Onions (bunching), Peas (southern), Squashes, Turnips

UF IFAS Extension
UNIVERSITY OF FLORIDA



For more information, please visit
GardeningSolutions.ifas.ufl.edu

Florida-Friendly Landscaping Tips

September

Florida-Friendly Landscaping™ (FFL) means using low-maintenance plants and environmentally sustainable practices to have a beautiful landscape or bountiful garden that saves you time, energy, and money.

RAIN BARRELS & CISTERNS

When it rains in Florida, it often pours. Rain barrels can capture a significant amount of water and can have a tangible effect on your water bill, especially when two or more rain barrels are connected together. Best of all, they're fairly easy to find in stores and to make! Cisterns also catch rain, but can hold hundreds or thousands of gallons. Cisterns require more engineering than rain barrels, and may require a permit depending on their use.

FERTILIZE APPROPRIATELY

Lawns that received fertilizer in spring and/or recycled nutrients from lawn clippings, may not need additional fertilizer this time of year. If needed, apply fertilizer when grass is actively growing, but before growth begins to slow for winter dormancy. In North Florida, your last fertilizer application should be made in September. Water it in with ¼ inch of water or less.

ENCOURAGE BENEFICIAL INSECTS

Learn to recognize the insects in your garden that help manage pests and let them continue their good work! If you see a pest outbreak, determine if it's being managed by natural enemies already present. Many beneficial insects prey on pests, and harming them will just help the pests. The insects pictured are beneficial insects.



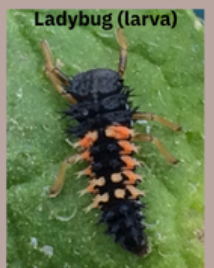
Green Lacewing (eggs - larva - adult)



Parasitic Wasp
(lays eggs on
Hornworm pests)



Big-eyed Bug



Ladybug (larva)

FOR MORE
INFORMATION:

<https://ffl.ifas.ufl.edu/>

<https://sfyl.ifas.ufl.edu/baker/>

UF IFAS Extension
UNIVERSITY OF FLORIDA
An Equal Opportunity Institution



By Alicia Halbritter, Agriculture Agent

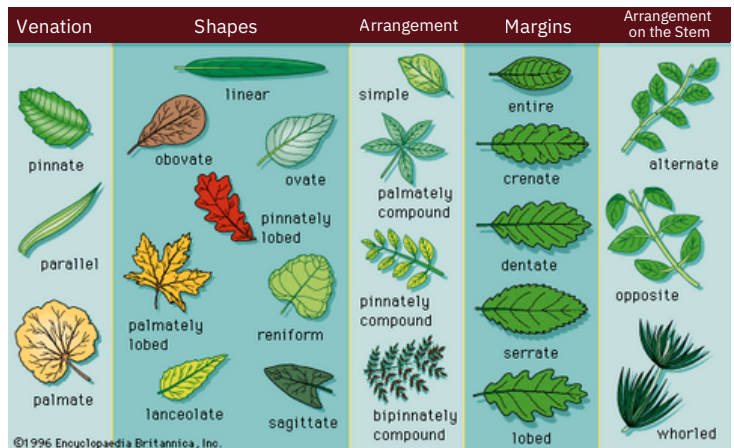


Plant ID Basics



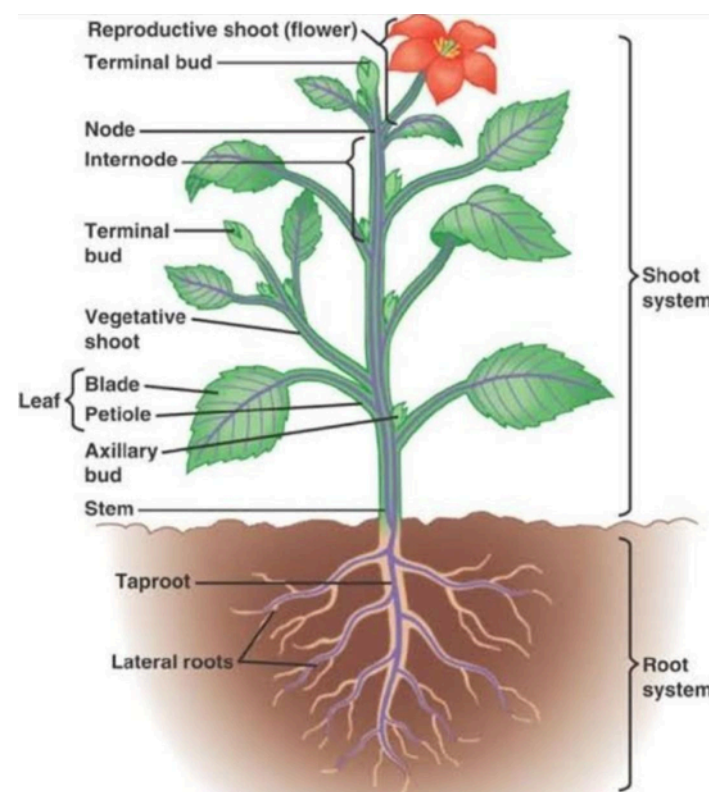
Knowing basic plant identification characteristics is an important factor of weed management, but why? The main reason is that herbicides and other management techniques are not the same for every plant. Some plants have close look a-likes that could be invasive, toxic, or otherwise problematic and you wouldn't want to mistake it for another plant. Additionally, if you don't know what a plant is and you are seeking help from an extension agent or consultant, you'll need to have some basic knowledge to accurately describe the plant characteristics. There are over 4,100 flowering plants in Florida, the plant group home to most of our "weeds", so there are lots of potentials for popping up on your property.

You should be able to describe the environment the plant is growing in, whether it be a pasture, lawn, crop field, or something else. Additionally, you should know if it is a grass or broadleaf. Grass species have parallel veins on narrow leaves while broadleaves have branch veins on broad leaves of various shapes.



Parts of the plant you should be able to describe are outlined below:

- **Plant Families:** plant families share similar characteristics and may help narrow down what the mystery plant is. See if you can match the plant to something you are familiar with that it looks like.
- **Growth Habit:** Describe the form of the plant. Is it upright, shrub-like, woody, grass-like, a vine, crawling?
- **Roots:** Does it have one large taproot (like a carrot), or a fibrous root system with a thick bunch of thin roots?
- **Stem:** Is the stem branched or unbranched? Is it hairy? What color is it? Does it have thorns? Is it herbaceous or woody? Additionally, it is important to know the difference between rhizomes, which are lateral stems that grow under the ground (think, bahiagrass), and stolons, which are lateral stems that grow above the ground (think, St. Augustine Grass).
- **Leaf:** Are the leaves simple or compound? What is the leaf shape & arrangement on the stem? Are the edges lobed, toothed, scalloped or smooth? Does the leaf surface have a texture? Is it fuzzy, dull, or waxy?
- **Flowers:** Describe the color, the number of petals, and if the flowers are solitary or clustered together. Be able to give a size comparison to something common (a quarter for example).
- **Fruits or Seeds:** Describe the color, shape, number and current development stage of the product.





LUCKY CLOVER CHRONICLE

By Shaina Spann, 4-H Youth Development Agent



Guide to 4-H Attire at the fair

What to wear:

- White collared shirt, tucked in
- Black/dark jeans
- 4-H Clover Patch or jacket/vest
- Boots or other appropriate closed toe shoes

When to wear:

- When exhibiting
- When selling



The 4-H Office has iron-on patches available!

INSECTATHON

4-H is looking to put together a team for the Insectathon! The 4-H State Insectathon Event provides 4-H youth with opportunities to demonstrate their knowledge of the entomology world. Registration (\$10) opens October 1st with the contest on February 7, 2026. Reach out to Mrs. Shaina for more details!



4-H Club Meetings & Events

- Sep 1- New 4-H Year starts!
- Sep 8- Cloverbuddies, 4-5 pm, Auditorium
- Sep 18- **NEW!** STEAM Explorers, 4:30-5:30pm, Auditorium
- Aug 26- Livestock Club, Auditorium, 6pm



Check out our Livestock [Google Site!](#)

REMIND APP

text @bakerco4h to 81010 to be added to the 4-H Remind text group.

**Re-Enroll for the
New 4-H Year Today!**

BLUE JEANS & AMERICAN DREAMS



2025 Baker County Agricultural Fair

OCTOBER 21ST - 26TH, 2025
BAKERCOUNTYFAIR.COM



HOME ARTS

Art, Sewing,
Crafts, Foods,
Table Setting, plus
new LEGO exhibit
and Chili Cook
Off!

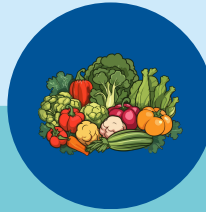
[INFO](#)



HORTICULTURE

Enter your flowering,
fruiting or foliage
plants plus
categories for
bonsai, succulents,
and more!

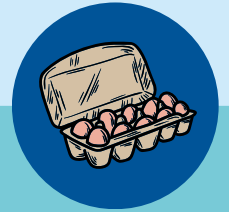
[INFO](#)



VEGETABLE CONTEST

Enter a garden
vegetable table
display, fruit or
vegetable display, or
pumpkins!

[INFO](#)



EGG COMPETITION

Enter 1 dozen
eggs from your
farm for display
& judging!

[INFO](#)

**EACH EXHIBITOR RECEIVES A ONE-DAY ENTRY PASS TO VISIT
THE EXHIBITS AND VIEW THE ITEMS AND PLANTS ON DISPLAY.**

CASH PRIZES AVAILABLE FOR RIBBON WINNERS!

[MORE INFO](#)

Important Dates & Times

[MORE INFO](#)

Check-in for home arts:
Monday, October 13
@ 9 a.m. - 3 p.m.

Check-in for all
other exhibits:
Saturday, October 18
@ 9 a.m. - 3 p.m.

Table Setting Event:
Sunday, Oct 19
@ 3:30 pm

Baked Goods Entries:
Monday, Oct 20
@ 11 a.m. - 5 p.m.

STRAWBERRY PLANT FUNDRAISER

Choose from 2 varieties:

'Camarosa'

Camarosa is an early short day variety. This vigorous plant produces large to very large firm fruit with good flavor. Interior color of Camarosa is a brilliant red and fruit colors uniformly. Yield potential is high to excellent.

10 plants - \$6

50 plants - \$25

'Fronteras'

Fronteras is a short day variety, meaning it responds to day length, produces the bulk of its fruit in the shorter days of fall and spring. This large, vigorous plant produces moderately firm berries with excellent flavor.

**PRE-ORDER TODAY
PAY AT PICK-UP**

259-3520

**All orders come with planting
and growing instructions.**

**Plus, we have a free online
(self-paced) class available:**

