

June 2024

In this Issue:

Greetings from the Director
Cindy Sanders, Ph.D.
Page 1

Invasion of Spanish Moss? But Is
It Really?
Like Harlow
Page 2

Factors to Consider When
Selecting Bulls
Lizzie Whitehead
Pages 3-4

4-H News
Bailea Scarbrough
Pages 5-6

Flyers for Upcoming Events and
4-H Summer Day Camps
Pages 7-11

Cindy Sanders, Ph.D.
UF/IFAS Extension
Bradford County
Interim Extension Director
sanders1@ufl.edu

<https://sfyl.ifas.ufl.edu/bradford/>



Dear Bradford County Extension Clientele,

I can't believe summertime is upon us! It seems like just yesterday we were planning for fall and winter.

We just concluded our annual 4-H recognition banquet last week. I can't thank our 4-H volunteers, parents, and leaders enough for the work they do with our youth. I was also impressed with the activities that our Bradford County 4-H Youth are involved in – the life skills that they are developing through 4-H is truly amazing. In addition, the Bradford County Master Gardeners held their plant sale this past spring, and I thank them for volunteering in the program. Our extension agents could not have a successful program in Bradford County without our volunteers.

I hope that you find the articles in this newsletter educational and look forward to seeing you this summer. We have some great educational summer day camps planned for the kids. Contact our office if you have any questions.

Cynthia B. Sanders, Ph.D.
UF/IFAS Bradford County
Interim Extension Director

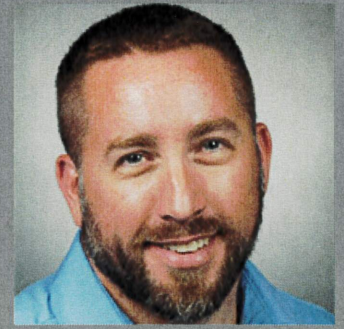


UF/IFAS Bradford County Extension Staff

Cindy Sanders, Interim CED
Luke Harlow, Horticulture & Small Farms Agent
Lizzie Whitehead, Livestock & Natural Resources Agent
Bailea Scarbrough, 4-H Youth Development Agent
Tamara Dinkins, Office Manager/Administrative Staff
Sterling Westbrook, Program Assistant

Invasion of Spanish Moss! But Is It Really?

Luke Harlow
Horticulture and Small Farms Agent
harlow1231@ufl.edu



We have received several calls about Spanish moss killing residents' trees and how to get rid of it. So, we wanted to provide some information on this so-called 'killer moss' and how best to manage it on your property.

First, let's clear the air on two fronts:

Spanish Moss does NOT kill trees. It is not parasitic like mistletoe; it does not latch onto the tree and steal any resources. It only uses the tree to support itself while pulling in needed nutrients from rainwater collected on leaves and branches. This is a class of plants known as 'epiphytes' which have evolved to obtain nutrients without the benefit of soil. Thus, they can also grow and flourish on fence lines or other non-living structures as well.

Spanish Moss is neither a moss, nor is it even from Spain! As an epiphyte, it is in the bromeliad family, more closely related to pineapples than moss! Spanish moss is native to Mexico but was given its name by French explorers who felt like it reminded them of Spanish conquistadors' long beards. So, the name stuck! This plant has an amazing history. In the early automobile days, it was used to stuff car cushions and seats. However, this was short-lived as insects were said to infest the Spanish moss, and you can imagine how that went over for automobile drivers!



But enough of a history lesson! Let's talk about how to manage Spanish moss in your trees. Remember that Spanish Moss is not harmful to your trees. Many people visually notice the moss when there is a lack of leaf cover on the tree, or branches start dying. Usually, these are coincidental, and the two occurrences are not related. Many times, the tree is at such an age that natural issues start showing, such as branches dying back, or a lack of leaf cover. Sometimes there are other pressures on the tree, such as drought or other weather-related stress, or insect and disease pressures. Other issues could be poor tree management practices, such as mounding mulch around the trunk, or car traffic over the root zone of the tree, or even weed-edgers hitting the tree trunk. Any of these practices can stress out the tree and may cause harm. It is these practices or pressures that need to be corrected for the health of the trees, rather than focusing on killing the Spanish moss.

But enough of a history lesson! Let's talk about how to manage Spanish moss in your trees. Remember that Spanish Moss is not harmful to your trees. Many people visually notice the moss when there is a lack of leaf cover on the tree, or branches start dying. Usually, these are coincidental, and the two occurrences are not related. Many times, the tree is at such an age that natural issues start showing, such as branches dying back, or a lack of leaf cover. Sometimes there are other pressures on the tree, such as drought or other weather-related stress, or insect and disease pressures. Other issues could be poor tree management practices, such as mounding mulch around the trunk, or car traffic over the root zone of the tree, or even weed-edgers hitting the tree trunk. Any of these practices can stress out the tree and may cause harm. It is these practices or pressures that need to be corrected for the health of the trees, rather than focusing on killing the Spanish moss.



You may have heard or seen of spraying the Spanish moss with copper sulfate or using a pressure washer. While these will work to remove the moss, pressure washing can potentially damage the tree severely, and the application of chemicals may not be economically feasible with trees. Sometimes admiring the beauty of the moss is the best solution.

Lastly, remember when I mentioned insects in the moss? These are usually chiggers, tiny biting insects. They are frequently only found on Spanish moss that has fallen to the ground, as the insect likes low, damp areas of heavy vegetation. So, wear gloves when picking Spanish moss off the ground!

LIVESTOCK CORNER

Lizzie Whitehead
Livestock & Natural Resources Agent
liz.whitehead@ufl.edu



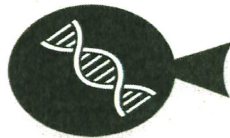
FACTORS TO CONSIDER WHEN SELECTING BULLS

Did you know the bull is 50% of your herd's genetics? Superior genetics in a bull will spread through your herd faster and are a necessary investment.



To maintain your bull's health, maintain a relationship with your veterinarian and vaccinate at least 30 days before breeding season.

THINGS TO CONSIDER WHEN SELECTING A BULL:



Genetic Performance

Can be evaluated through the use of Expected progeny differences (EPDs). EPD's predict the difference that can be expected in the performance of the progeny.



Visual Appraisal

Structural correctness, muscle composition, angles, sheath score, and functionality can be determined by looking at the bull.



Acclimation to the Environment

Find a bull that will adjust to your ranch's climate and management conditions. Evaluate the need of the bull for additional feed and supplements during the breeding season.

EXPECTED PROGENY DIFFERENCES (EPDS)

EPDs provide an estimation of the performance in progeny based on their parents data. Growth EPDs provide information on topics such as weaning and yearling weight while carcass EPDs include information on topics like marbling, backfat thickness, and ribeye area. This data gives producers the ability to select bulls based on their production goals.

EPD Values associated with Top 25% of Sires in the Breed (Best Overall) Top 25% (Bottom 25%) of Sires in the Breed

Lot #	CE	WW	YW	MRB	SBF	REA	EPD
1	115	140	210	110	10	10	10
2	110	135	205	105	10	10	10
3	105	130	200	100	10	10	10
4	100	125	195	95	10	10	10
5	95	120	190	90	10	10	10
6	90	115	185	85	10	10	10
7	85	110	180	80	10	10	10
8	80	105	175	75	10	10	10
9	75	100	170	70	10	10	10
10	70	95	165	65	10	10	10
11	65	90	160	60	10	10	10
12	60	85	155	55	10	10	10
13	55	80	150	50	10	10	10
14	50	75	145	45	10	10	10
15	45	70	140	40	10	10	10
16	40	65	135	35	10	10	10
17	35	60	130	30	10	10	10
18	30	55	125	25	10	10	10
19	25	50	120	20	10	10	10
20	20	45	115	15	10	10	10
21	15	40	110	10	10	10	10
22	10	35	105	5	10	10	10
23	5	30	100	0	10	10	10
24	0	25	95	-5	10	10	10
25	-5	20	90	-10	10	10	10

BREEDING SOUNDNESS EXAM (BSE)

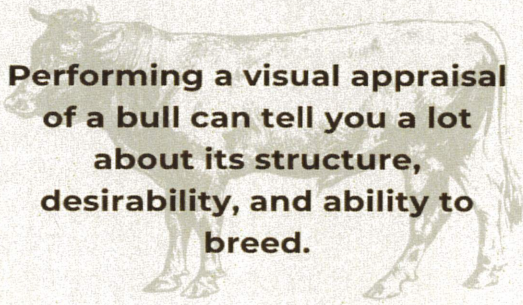
A BSE is a physical exam of both internal and external reproductive organs and is performed by a veterinarian. It includes a semen collection and measuring of the scrotal circumference.



In order to pass, the bull must:

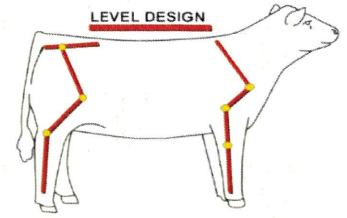
- Have at least 70% normal sperm
- Pass a physical exam
- Meet the minimum requirement for scrotal circumference
- Palpation of internal organs

Performing a visual appraisal of a bull can tell you a lot about its structure, desirability, and ability to breed.



A FUNCTIONAL BULL:

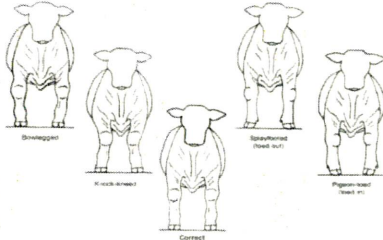
- Deep and big bodied
- Easy fleshing
- Correct angle to joints
- Correct foot size and heel structure
- Moderate frame score



A bull's structure impacts their overall health, ability to breed, and reflects the traits that they will pass down to future progeny.



Front Leg Structure

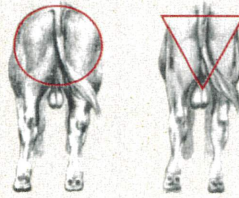


EVALUATING MUSCLE

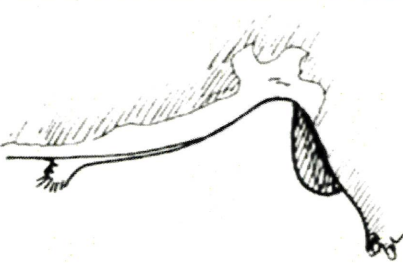
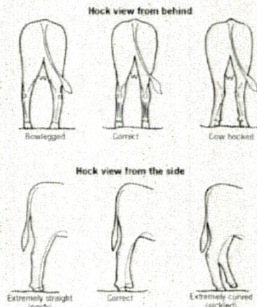
Side:
Forearm
Topline
Rear Quarter



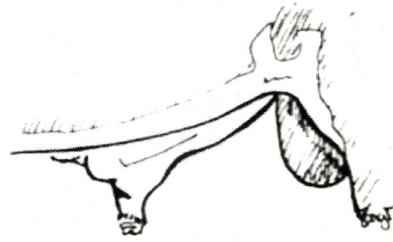
Behind:
Evaluate Muscle Up High
Width of Stance at the Ground



Rear Leg Structure



Desirable sheath



Loose, undesirable sheath

SHEATH SCORING

A bull's sheath can impact their ability to breed. Having a relatively high and tight sheath is ideal for breeding purposes. A looser, lower sheath can prevent the bull from breeding cows naturally.

BULL TO COW RATIO

When breeding naturally, it is important to have a proper bull:cow ratio to ensure that you have enough bulls to service your herd.

Bull age	Bull to Cow Ratio
12-18 Months	1:15-20
2 years	1:30-35
3+ years	1:35-40

FOR MORE INFORMATION:

Lizzie Whitehead, Agriculture & Natural Resources Agent I
UF/IFAS Extension Bradford County
liz.whitehead@ufl.edu

BRADFORD COUNTY 4-H NEWS



Wrapping Up the 2023 - 2024 4-H Year

Our current 4-H year is coming to a close. At our Awards Banquet on May 31st, we celebrated the accomplishments of our 4-H members and recognized several volunteers and stakeholders that made this year possible.

Gearing Up for the 2024 - 2025 4-H Year

The new 4-H year will begin on September 1st. We are excited to see what the new year has in store! Specific information about available clubs will come around early August.



Volunteers are the  of 4-H!

We want YOU to volunteer with Bradford County 4-H!

Did you know that there are many ways to give back to your county 4-H program? Although we appreciate support of any kind (monetary donations, in-kind donations, etc.), volunteer service is the most invaluable type of support one can offer. You may be asking what volunteering with 4-H involves. Even though many are interested in impacting young lives, we understand that some simply don't have the time to dedicate to volunteerism. Here are some examples of volunteer roles we need filled:

- **4-H Contest Judges** - We are always searching for adults to help judge various contests and events throughout the year. Judges are provided with a brief judges orientation and score sheets to follow. Qualified judges must be open-minded, fair, able to communicate with youth of various ages, and ideally would be familiar with the contest/event they are judging. This is one of the least time consuming volunteer roles, but still very crucial and rewarding.
- **4-H Association Members**- We are searching for a few additional members to join our Bradford County 4-H Association/Advisory Committee. This committee helps the 4-H Agent plan, evaluate, and fundraise for our educational programs and activities. This volunteer role is not very time consuming, but there are specific qualifications as we are looking for dedicated individuals with fresh ideas.
- **4-H Club Leaders/Co-Leaders** - We are actively searching for adults to lead or co-lead 4-H clubs during the 2024-2025 4-H Year. Our advisory committee has placed high priority on needing clubs in the following project areas:
 - Shooting Sports (Archery or Shotgun)**
 - Goats**
 - Rabbits**

Continued on next page

BRADFORD COUNTY 4-H NEWS



Becoming a 4-H volunteer is a rewarding experience that offers numerous benefits, not only to the youth involved but also to the volunteers themselves. Here are some key advantages of being a 4-H volunteer:

- **Personal Growth and Fulfillment** - Volunteers can develop and refine skills such as leadership, teaching, communication, and project management which can be personally and professionally beneficial. Additionally, contributing to the growth and development of young people provides a profound sense of achievement and purpose.
- **Community Engagement** - Volunteering with 4-H helps build stronger, more connected communities. Adult volunteers have the opportunity to make a tangible difference in communities by helping youth to become responsible, caring, and contributing citizens.
- **Enhancing Youth Development** - Volunteers serve as mentors and role models to youth, helping them explore new interests, develop skills, and gain confidence.
- **Learning and Sharing Knowledge** - Volunteers can share their own knowledge and skills on things they are passionate about, and may also learn many new things from the youth.
- **Professional Benefits** - Volunteering can open up opportunities for networking and professional growth.
- **Health and Well-Being** - Helping others and seeing positive outcomes of your efforts can boost emotional health and overall well-being.

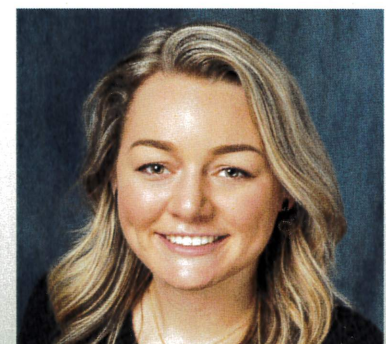
If you are interested in sharing your time and talents with the young people of Bradford County or know someone who may be able to fill one of the roles we are searching for, please contact us!

4-H Summer Day Camps

We still have open spots in our upcoming summer day camps!
Day camps are open to any local youth that meets the age requirements, they do not have to be a 4-H member to participate.

- Blacksmith Day Camp*** - June 13 & 14 - Ages 13-18 - Cost \$50
- Young Entrepreneur Day Camp*** - June 25-27 - Ages 11-18 - Cost \$60
- Meat Masters Day Camp*** - July 11 - Ages 11-18 - Cost \$25
- Animal Adventures Day Camp*** - July 23 & 24 - Ages 8-12 - Cost \$25

For more information on each camp and instructions on how to register, please contact us ASAP before spots are filled.



Bailea Scarbrough

4-H Youth Development Agent

(904) 966-6224

bgnann@ufl.edu



BLACKSMITH SUMMER CAMP

**TWO DAY CAMP
JUNE 13TH & 14TH 2024
9AM-3PM**



**Register through
4-H Online**

<https://BradfordBlacksmithCamp.4honline.com>

This unique blacksmithing summer camp will introduce youth to the basics of blacksmithing including running a forge and anvil and how to use hammers. Youth will make several unique tools and items to take home.

Ages 13-18 ~ Fee \$50

Pre-Registration Required by June 3rd

Space is limited!

4-H



SUMMER

DAY CAMPS

Blacksmith Camp

June 13-14
9am-3pm

\$50 (snacks & materials)

BradfordBlacksmithCamp.4honline.com

Basics of Blacksmithing including running a forge and anvil and how to use hammers.

Ages: 13-18

Young Entrepreneur

June 25-27
8:30am-3pm

\$60 (includes snacks and lunch)

YoungEntrepreneur.4honline.com

Participants will learn about marketing, business plans, and other components needed to run a business.

Ages: 11-18

Animal Adventures

July 23-24
9am-3pm

\$25 (snacks and lunch on day 2)

BradfordAnimalCamp.4honline.com

Dive into the world of farm animals and beyond

Ages: 8-12

UF | IFAS Extension
UNIVERSITY of FLORIDA


Bradford County Florida
EVERYTHING IS BETTER IN BRADFORD



BRADFORD 4-H MEAT MASTERS *Day Camp*

THURSDAY

July

11

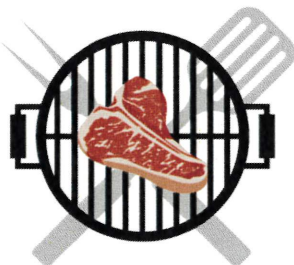
8:00 a.m. - 4:00 p.m.

Transportation to UF
Meat Processing Center
from Bradford County
Extension Office provided



\$25
registration
fee

Join us on a trip to the UF Meat Processing Center as we dive into the basics of meat processing, food safety, and meat preparation. Activities include a tour of the UF Meat Processing facility, carcass evaluation, and a grill-off.



Ages 11-18

Limited spots available

Preregister by July 8th

<https://BradfordMeatsCamp.4honline.com>

For more information, contact Lizzie Whitehead:

liz.whitehead@ufl.edu or (904) 966-6224

An Equal Opportunity Institution. UF/IFAS Extension, University of Florida, Institute of Food and Agricultural Sciences, Andra Johnson, Dean. Single copies of UF/IFAS Extension publications (excluding 4-H and youth publications) are available free to Florida residents from county UF/IFAS Extension offices.



ANIMAL ADVENTURES SUMMER DAY CAMP

AGES 8-12 (AS OF SEPT 1, 2023)

JULY 23RD AND 24TH | 9AM - 3PM

PRE-REGISTRATION REQUIRED BY JULY 17

\$25

PER CAMPER



Join us as we dive into the world of farm animals and beyond. From hands-on educational experiences to fun-filled field trips, you won't want to miss out!

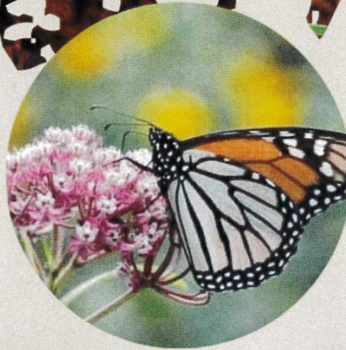
Contact us for more information - (904) 966-6224



REGISTER THROUGH 4-H ONLINE

BradfordAnimalCamp.4honline.com

JOIN US FOR THE *Let's Talk Series:*



DATES AND PROGRAM TOPICS

ALL CLASSES ARE FROM 6:00 PM - 7:30 PM
LOCATION: BRADFORD COUNTY EXTENSION OFFICE
2266 N. TEMPLE AVE, STARKE, FL 32054

Tuesday, May 21st - Irrigating Your Food Gardens

Tuesday, June 18th - Keeping Your Plants Alive in the Summer

Tuesday, July 16th - Gardening with Pollinators

Tuesday, August 20th - Fall Veggies: What Can I Grow?

Tuesday, September 17th - So Many Fruit Trees! Which to Try?

Tuesday, October 15th - Growing Strawberries at Home

Tuesday, November 19th - How to Care for Your Holiday Plants

Tuesday, December 17th - Beekeeping: How Do I Start?

REGISTER NOW

Registration is required

REGISTRATION FEE PER CLASS **\$10**

CALL 904-966-6299 WITH
QUESTIONS.

TO REGISTER FOR ANY OF THESE
CLASSES, SCAN THE QR CODE
BELOW OR FOLLOW THE LINK:
[HTTPS://WWW.EVENTBRITE.COM/
O/UFIFAS-EXTENSION-
BRADFORD-
COUNTY-11830849263](https://www.eventbrite.com/o/ufifas-extension-bradford-county-11830849263)

