

UF/IFAS EXTENSION

Bradford County

2266 N. Temple Ave · Starke, FL 32091 · (904) 966-6224

In this Issue:

Greetings from the Director <i>Cindy Sanders, Ph.D.</i>	1
Cool Season Forages <i>Lizzie Whitehead</i>	2-3
Holiday Plant Care <i>Luke Harlow</i>	4
4-H News <i>Bailea Scarbrough</i>	5
Upcoming Event Flyers	6-9



Cindy Sanders, Ph.D.
UF/IFAS Extension
Bradford County
Interim Extension Director
sanders1@ufl.edu

<https://sfyl.ifas.ufl.edu/bradford/>



November 2023

Dear Bradford County Extension Clientele,

First, I want to introduce our new Bradford County Extension 4-H Agent Bailea Scarbrough. Bailea started on November 17, 2023 and we are happy to add her to our team at the UF/IFAS Extension Office in Bradford County.

I want to personally thank all of our businesses and individuals that supported our 2023 Bradford County 4-H Auction. The auction this year was a huge success and the proceeds from the auction will support our 4-H program and youth for the upcoming year. I want to also thank our supporters that helped our 2023 State Winning Livestock Judging team that attended the National Livestock Judging Contest in November.

All of our staff and agents wish you a very happy and safe Holiday Season and a happy New Year!

Cynthia B. Sanders, Ph.D.
UF/IFAS Bradford County
Interim Extension Director



PLEASE HELP US UPDATE OUR FILES!

Scan the QR code to the left or visit <https://forms.gle/q4oEbUMbESveFVN8A> to complete a brief form updating all of your contact information. This will help us maintain a complete and up to date contact list for our office. THANK YOU!

Steps on How to Utilize Cool Season Forages in Your Pastures

Lizzie Whitehead
Livestock & Natural Resources Agent
liz.whitehead@ufl.edu

It is the time of year to start implementing cool-season forages in your pastures. Our perennial warm season pasture grasses in Florida become dormant in the fall and winter months because of the shorter days, cooler temperatures, and frosts. Planting a cool-season forage provides many benefits to your herd. These grasses are usually higher in total digestible nutrients (TDN) and crude protein (CP) than our summer grasses or hay. Being strategic when planting and growing these forage crops is essential to the success of the establishment and success of your cool-season forage pastures. The



Cattle grazing ryegrass in February (Photo Credit: Lizzie Whitehead)

The type of soil and the amount of rainfall will determine which cool-season forages you want to plant. Below are the steps to consider when planting your cool-season forages in your pasture:

Recommended Steps to Planting Cool-Season Forages:

Decide which type of cool-season forages to plant.

Pick which cultivar and varieties you want to plant. Many improved varieties have been developed by the UF/IFAS Forage Breeding team.

Take soil samples in your designated area.

Before planting, take soil samples in the area where you want to plant cool-season forages and bring your sample to your local extension office. Cool-season forages typically require a fine adjustment of soil pH and nutrient levels than your traditional Bahia or Bermuda grasses.

Prior to planting, prepare your seedbed.

Options might include mowing, light disking, moldboard plow, heavy-disk harrow, rototiller, or many other cultivating tools to prepare the seedbed. Level the area before planting. Overseeding (planting over the existing pasture) is an option but requires special equipment like a no till drill. You can broadcast over sod with ryegrasses and clovers. When planting over your established pasture, it is important to wait until after the first frost.



No-till drill planter. Photo by: Dennis Hancock, University of Tennessee

Calibrate your equipment based on which cultivar you chose.

Calibrate your planter every year. Make sure soil moisture conditions and weather forecasts are ideal. If the soil is too dry and there is no forecast of rain, seeds will not germinate.

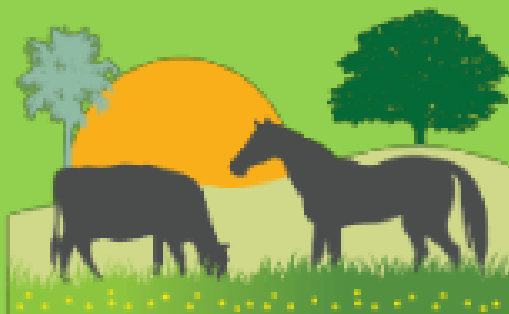
Base your fertilizer output off the UF/IFAS Soil Lab recommendations.

Application of a starter fertilizer can be applied at planting (P and K plus 30 pounds of nitrogen) right after germination. A follow-up application of nitrogen 45-60 days after planting would also be beneficial for the grasses and give them nutrients to produce a higher yield.

Keep livestock out of your newly planted cool-season pasture.

It is recommended to fence off this newly planted cool-season pasture, so your livestock do not graze it too early when it is fragile and not well established. Let the cool-season forage grow to optimal height depending on which cultivar you choose.

If you have any questions related to cool-season forages or winter grazing strategies for your livestock, contact your local UF/IFAS Extension Agent. In Bradford County, call (904) 966-6224. For further information regarding cool-season forage variety, check out this UF IFAS EDIS publication SS-AGR-84: <https://edis.ifas.ufl.edu/publication/AA266>.



Holiday Plant Care

Luke Harlow
Horticulture and Small Farms Agent
harlow1231@ufl.edu

Nothing says the holidays better than a poinsettia plant. With the botanical name *Euphorbia pulcherrima*, this plant honors Joel Roberts Poinsett, the first U.S. ambassador to Mexico, from where the poinsettia is indigenous.

These plants are great decorations or gifts during the November and December holiday season due to their showy red colors. The showy leaves, called bracts, come in a variety of different colors, including the common red, white, cream, pink, orange, and even purple. There can also be quite a bit of variation based on different cultivars of the poinsettia plant. The Ice Punch cultivar's bracts start as red but turn white as



they mature. Peppermint Twist's bract color varies from plant to plant, providing a unique looking display if displayed in groups.

Poinsettias are normally bought and displayed in decorative pots and are great additions for indoor holiday displays. If not exposed to colder temperatures, the plants should retain their vibrant colors through February-March. These plants like well-lit rooms, but direct sunlight may dry them out quickly. Care should be taken to make sure they are watered, but soil should also not be over moist as excessive watering can kill these plants.

Unlike your real Christmas tree, poinsettias do not

need to be thrown out at the end of the holiday season and can be planted in the ground to add some variety to your landscapes. This should be done after the last frost in the spring. Soil should be moist, but well-drained. Prune bracts that have faded in color and pinch back several times during the summer months to create a bushier plant next season.





Introducing New 4-H Agent – Bailea Scarbrough

Bailea was born and raised in Bradford County but has spent the past two years as the 4-H Youth Development Agent in Flagler County. She is currently pursuing a Master’s degree in agriculture education and communication, specialized in extension education. She was actively involved in Clay County 4-H and FFA growing up and loves sharing her passion for agriculture with youth. Beyond agriculture, Bailea’s favorite part of 4-H is how it prepares youth to be workforce ready through teaching valuable life skills. She is very excited to serve her home county and is looking forward to taking what she has learned in her previous role to grow and enhance the Bradford County 4-H Program. We are excited Bailea is here! Stop by and meet her if you haven’t already.

Bradford County 4-H Members—Dive into Democracy at 4-H Day at the Capitol

Bailea Scarbrough
4-H Youth Development Agent
bgnann@ufl.edu

Join us for a fun opportunity to witness democracy in action at 4-H Day at the Capitol – February 6, 2024. Bradford 4-H members of all ages are invited to this event at the Florida Capitol in Tallahassee where you will learn more about your state government, experience the political process firsthand, and potentially meet with your state legislators. Attending an event like this gives youth a chance to advocate for causes that matter to them and show our policymakers the impact of our local 4-H program. Throughout the day, participants will spend time with 4-H members across the state, hear from public officials, spend time in the Capitol Building, and see their legislators in action.

For younger 4-H members, witnessing the legislative process in action provides a tangible connection to the concepts they learn in school, making civic education come alive in a way that sparks curiosity and engagement. Additionally, young members will learn that their voices matter through sharing their experiences with state legislators. For older members, this event can serve as a steppingstone into active citizenship and leadership – teaching them to be informed, engaged, and responsible citizens as they transition into adulthood.

Register for 4-H Day at the Capitol via 4-H Online – deadline January 22, 2024.

More information - [Day At The Capitol - Florida 4-H - University of Florida, Institute of Food and Agricultural Sciences - UF/IFAS \(ufl.edu\)](https://www.ufl.edu/4h/day-at-the-capitol/)

UPCOMING DATES

December 1st - 15th - 4-H Holiday Food Drive

Tuesday, December 5th @ 6:00 pm - 4-H Holiday Bake Off

4-H PLEDGE

I pledge my **HEAD** to clearer thinking,
my **HEART** to greater loyalty,
my **HANDS** to larger service,
and my **HEALTH** to better living,
for my club, my community,
my country, and my world.



BRADFORD COUNTY 4-H



HOLIDAY BAKE-OFF

TUESDAY, DECEMBER 5, 2023 @ 6:00 PM
BRADFORD COUNTY EXTENSION OFFICE

Registration Due NO LATER THAN December 4th at Noon. Fee can be paid with entry.
Registration Fee: \$5 or Non-Perishable Food Donation of Similar Value Per Exhibitor



Entry (one per category/maximum two per member)

Item must be delivered the day of the contest by 6:00 pm

Name _____ 4-H Club _____

Email _____ Phone _____

Item Description _____

Item Category: (Circle One) Entree Side Dish Cake Cookies Pie Cupcakes Candy

Item Description _____

Item Category: (Circle One) Entree Side Dish Cake Cookies Pie Cupcakes Candy

Call 904-966-6224 for more information.

Entry forms can be dropped off to the Bradford Extension office or emailed to Bradford4H@ifas.ufl.edu



An Equal Opportunity Institution. UF/IFAS Extension, University of Florida, Institute of Food and Agricultural Sciences, Andrea Johnson, Dean. Single copies of UF/IFAS Extension publications (excluding 4-H and youth publications) are available free to Florida residents from county UF/IFAS Extension offices.

Let's Talk

**FLORIDA-FRIENDLY
LANDSCAPES**

Tuesday, December 5th, 2023

9:00am - 10:30am

UF/IFAS Bradford County Extension Office

2266 N Temple Ave, Starke, FL 32091

Call 904-966-6299 for more information.

\$5 registration fee - Register on Eventbrite by using QR code



We provide practical education you can trust, to help people, businesses and communities solve problems, develop skills and build a better future. The Institute of Food and Agricultural Sciences (IFAS) is an Equal Opportunity Institution authorized to provide research, educational information and other services only to individuals and institutions that function with non-discrimination with respect to race, creed, color, religion, age, disability, sex, sexual orientation, marital status, national origin, political opinions or affiliations. For more information on obtaining other UF/IFAS Extension publications, contact your county's UF/IFAS Extension office.



**SCAN THE QR CODE
FOR REGISTRATION**

**9TH
ANNUAL**

**BRADFORD
BEEF BASH**

JANUARY 26-27, 2024

**REGISTERED BRAHMAN HEIFERS
AMERICAN INFLUENCED HEIFERS
COMMERCIAL HEIFERS
BULLS & STEERS**

**LOCATION:
UNION COUNTY EXTENSION &
EDUCATION CENTER
15120 SW 84TH ST.
LAKE BUTLER, FL 32054**

BRADFORD COUNTY 4-H

HOLIDAY FOOD DRIVE

LETS FEED THE HUNGRY!



**Collection Dates:
December 1st -15th**

**WHAT
SHOULD I
DONATE?**

**UNEXPIRED &
NON PERISHABLE
FOOD ONLY**

**Drop donations off at the
Bradford County Extension Office
2266 N. Temple Avenue
Starke, Florida 32091**

**FOR MORE
INFORMATION:**

904-966-6224

UF | **IFAS Extension**
UNIVERSITY of FLORIDA



Bradford County *Florida*
EVERYTHING IS BETTER IN BRADFORD

An Equal Opportunity Institution. UF/IFAS Extension, University of Florida, Institute of Food and Agricultural Sciences, Andra Johnson, Dean. Single copies of UF/IFAS Extension publications (excluding 4-H and youth publications) are available free to Florida residents from county UF/IFAS Extension offices.