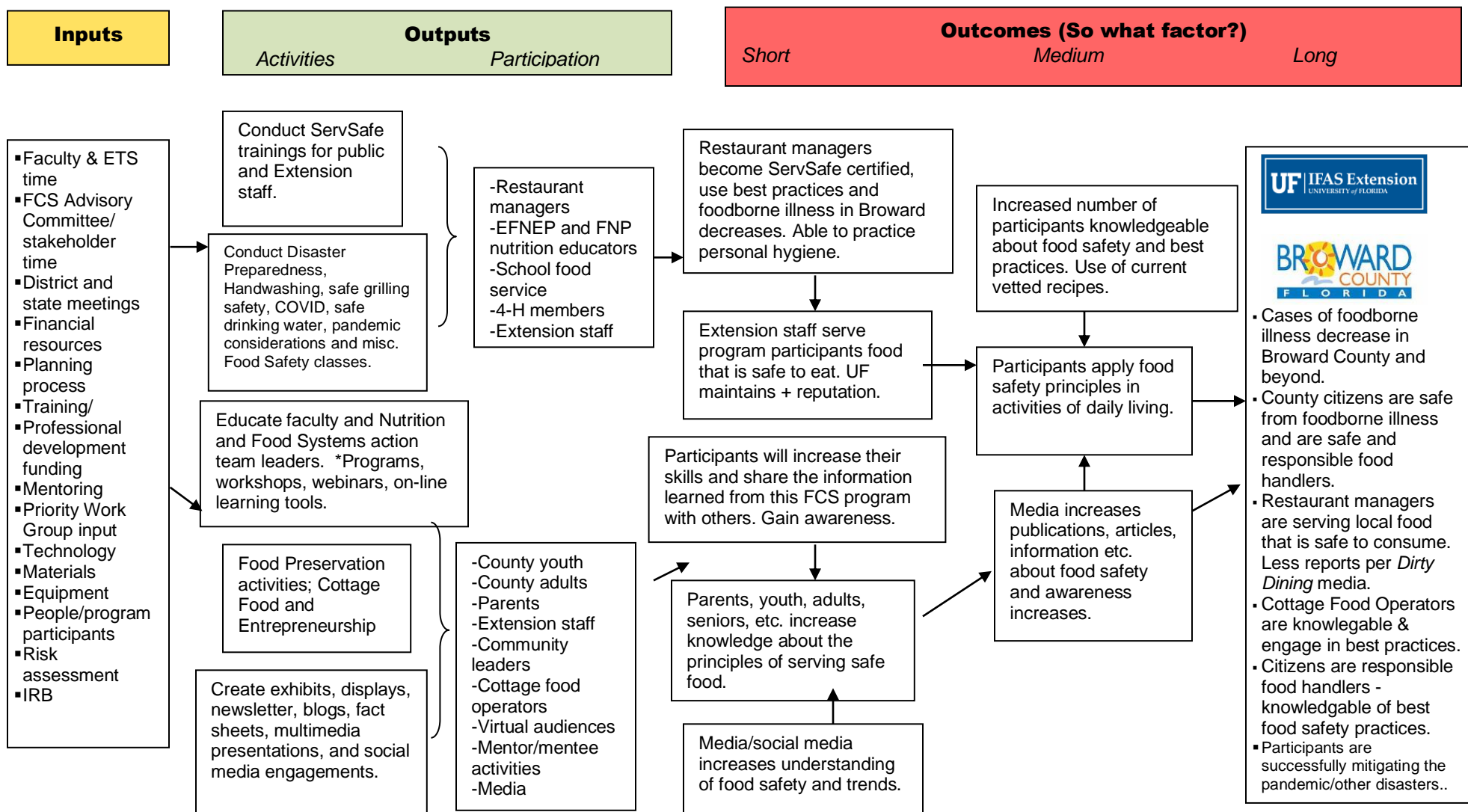


Logic Model

Program II: **Food Safety (20%) (Brenda Marty-Jimenez, MHM, RDN, LDN, FAND, UF/IFAS Extension, Broward County FCS Agent IV)**

Situation: Broward County is made up of 1.9 million people and is a diverse, urban area. Belief systems among ethnic groups varies. The Healthy People 2020 reports define health broadly to include the social determinants of health and includes the conditions and environments in which people live that affect their health and quality of life. Family and Consumer Sciences programs address the social determinants of health to help citizens improve personal, social, economic, environmental, wellbeing and thus their quality of life, through increased food safety knowledge gain and the adoption of best practices or behavior change. Extension programs teach clientele the skills and knowledge they need to make responsible consumer choices and positive health decisions to avoid food borne illness and maintain sound health. [Healthy People - Healthy People 2020 \(cdc.gov\)](http://www.cdc.gov/healthypeople)



Assumptions: Best practices in food safety education are taught and emphasized via programming. Agent keeps up to date with emerging trends, skills, knowledge base, and new information. Classes follow basic food safety principles of: CLEAN, COOK, CHILL and SEPARATE. All information presented is research based and factual. Agent can have local, state, national & international reach.

External Factors: The pandemic & natural disasters. Fluctuating funding and resources. Availability of volunteers. Internet, technology and digital capabilities and availability. Trainings available to update skill set on current food code and regulations. Unsafe food supply and recalls. Old, outdated recipes circulating and lack of knowledge about new recommendations.