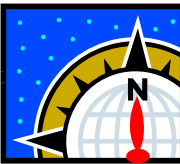
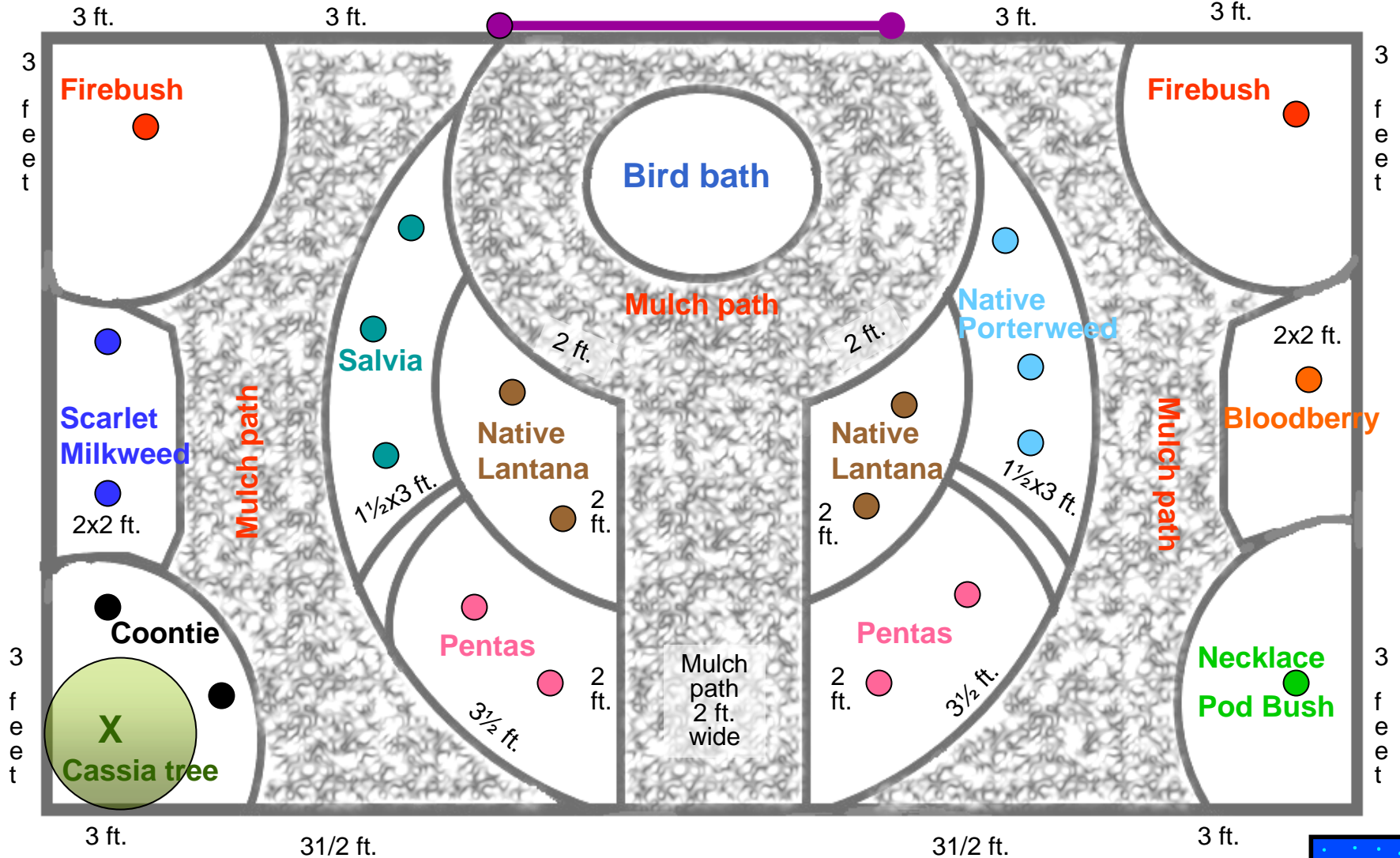


# 8 x 15 foot Butterfly Garden

1/2 inch = 1 foot

**Passion Vine on Trellis**



## Plant List

- 2 Firebush *Hamelia patens*
- 1 Cassia or Senna– Either *Senna didymobotrya*, *Senna bicapsularis*, *Cassia chapmanii*, or *Cassia alata*
- 1 Necklace Pod *Sophora tomentosa*
- 1 Bloodberry *Cordia globosa*
- 3 Native Porterweed *Stachytarpheta jamaicensis*
- 2 Coontie *Zamia pumila*
- 2 or 3 Scarlet Milkweed *Asclepias curassavica*
- 3 or 4 Salvia *Salvia coccinea*
- 4 to 6 Pentas *Pentas lanceolata*
- 4 *Lantana* native *Lantana involucrata*, *L. depressa*, or *L. montevidensis*
- 1 *Passion Vine* *Passiflora incarnata*, *P. suberosa*, or *P. incarnata* x *cinincata* 'Incentse'

## Hardscape

- Mulch
- Fencing or trellis for vine
- Birdbath or something of architectural interest for the circular area

UF/IFAS Broward County Extension Education Section Parks and Recreation Division

2345 College Avenue Davie, FL 33314-7719

Phone: (954) 756-8519

<http://sfyl.ifas.ufl.edu/broward/urban-horticulture-and-natural-resources/>