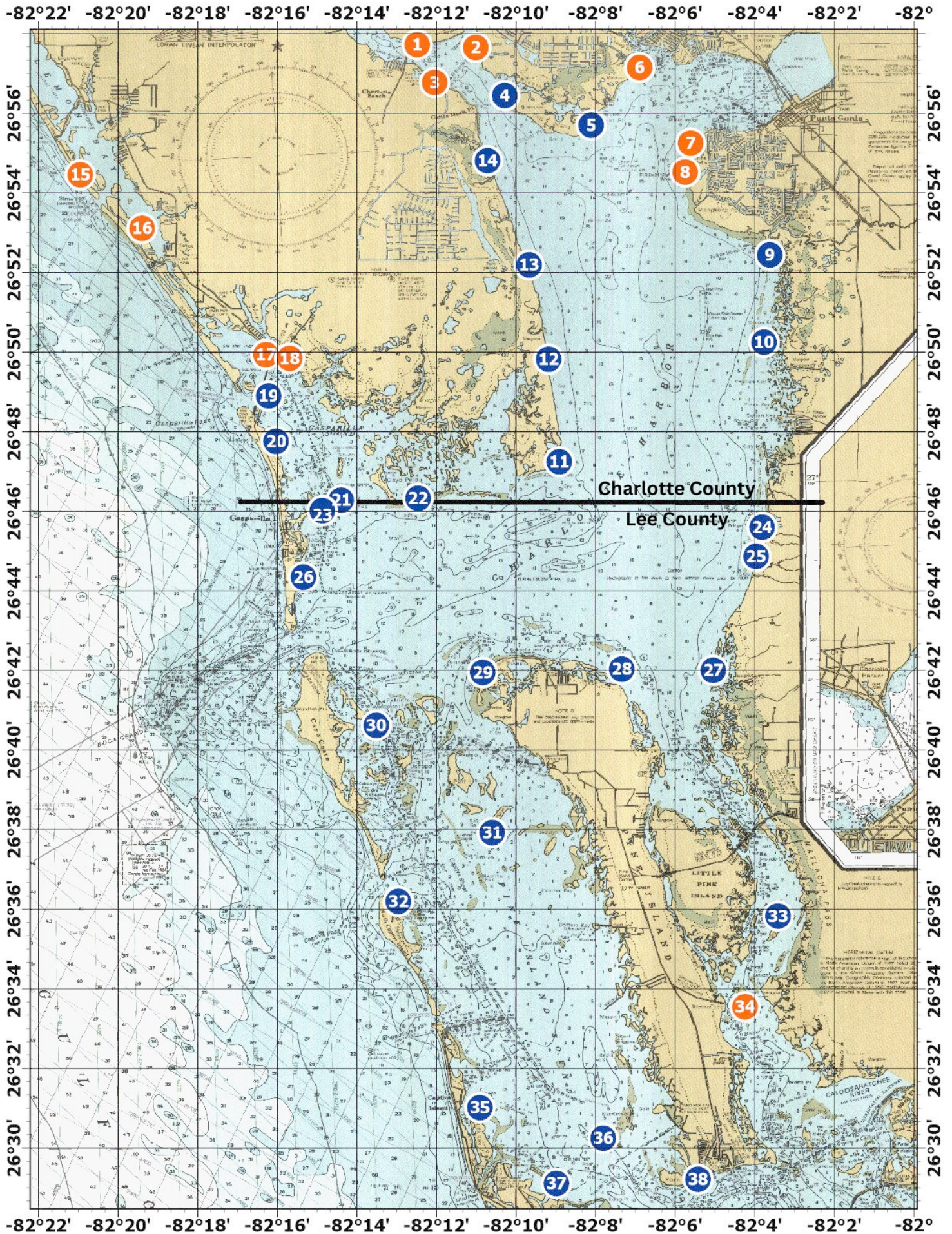


Eyes on Seagrass SUMMER Sampling Sites



Summer Sampling Site Coordinates

Site Number	Mean Water Depth (feet)	Degrees Minutes Seconds (DMS)						Decimal Degrees (DD)	
		Latitude (North)			Longitude (West)			Latitude	Longitude
		Degrees	Minutes	Seconds	Degrees	Minutes	Seconds		
CHAP1	2.0	26°	57'	43"	82°	12'	29"	26.9621	-82.2081
CHAP2	2.6	26°	57'	39"	82°	11'	7"	26.9609	-82.1835
CHAP3	2.6	26°	56'	46"	82°	12'	28"	26.9462	-82.2008
CHAP4	2.4	26°	56'	27"	82°	10'	17"	26.9408	-82.1714
CHAP5	3.1	26°	55'	42"	82°	8'	7"	26.9284	-82.1352
CHAP6	2.3	26°	57'	9"	82°	6'	54"	26.9525	-82.1149
CHAP7	2.6	26°	55'	15"	82°	5'	37"	26.9208	-82.0935
CHAP8	2.3	26°	54'	31"	82°	5'	45"	26.9087	-82.0958
CHAP9	2.1	26°	52'	26"	82°	3'	37"	26.8740	-82.0604
CHAP10	2.9	26°	50'	15"	82°	3'	46"	26.8375	-82.0628
CHAP11	2.5	26°	47'	15"	82°	8'	55"	26.7874	-82.1486
CHAP12	2.2	26°	49'	49"	82°	9'	11"	26.8303	-82.1530
CHAP13	2.4	26°	52'	11"	82°	9'	40"	26.8698	-82.1612
CHAP14	1.9	26°	54'	48"	82°	10'	43"	26.9135	-82.1786
CHAP15	2.8	26°	54'	27"	82°	20'	57"	26.9076	-82.3492
CHAP16	3.0	26°	53'	7"	82°	19'	24"	26.8852	-82.3233
CHAP17	1.6	26°	49'	56"	82°	16'	17"	26.8322	-82.2714
CHAP18	3.0	26°	49'	50"	82°	15'	41"	26.8307	-82.2615
CHAP19	1.9	26°	48'	54"	82°	16'	13"	26.8150	-82.2703
CHAP20	4.3	26°	47'	45"	82°	16'	18"	26.7960	-82.2672
CHAP21	3.1	26°	46'	17"	82°	14'	24"	26.7713	-82.2399
CHAP22	3.0	26°	46'	20"	82°	12'	28"	26.7721	-82.2077
CHAP23	4.4	26°	46'	10"	82°	14'	52"	26.7669	-82.2478
CHAP24	2.0	26°	45'	36"	82°	3'	49"	26.7600	-82.0636
CHAP25	2.6	26°	44'	52"	82°	3'	58"	26.7478	-82.0661
CHAP26	1.4	26°	44'	21"	82°	15'	21"	26.7391	-82.2557
CHAP27	2.5	26°	42'	18"	82°	5'	26"	26.7001	-82.0841
CHAP28	3.4	26°	42'	20"	82°	7'	21"	26.7005	-82.1224
CHAP29	2.8	26°	41'	57"	82°	10'	50"	26.6992	-82.1807
CHAP30	4.3	26°	40'	37"	82°	13'	31"	26.6770	-82.2252
CHAP31	4.7	26°	37'	55"	82°	10'	36"	26.6321	82.1767
CHAP32	4.4	26°	36'	12"	82°	12'	58"	26.6033	-82.2160
CHAP33	3.3	26°	35'	50"	82°	3'	25"	26.5971	-82.0569
CHAP34	2.8	26°	33'	33"	82°	4'	15"	26.5591	-82.0707
CHAP35	3.3	26°	31'	8"	82°	10'	55"	26.5169	-82.1818
CHAP36	4.3	26°	30'	15"	82°	7'	49"	26.5040	-82.1302
CHAP37	2.8	26°	29'	6"	82°	8'	59"	26.4851	-82.1498
CHAP38	3.8	26°	29'	13"	82°	5'	26"	26.4869	-82.0904