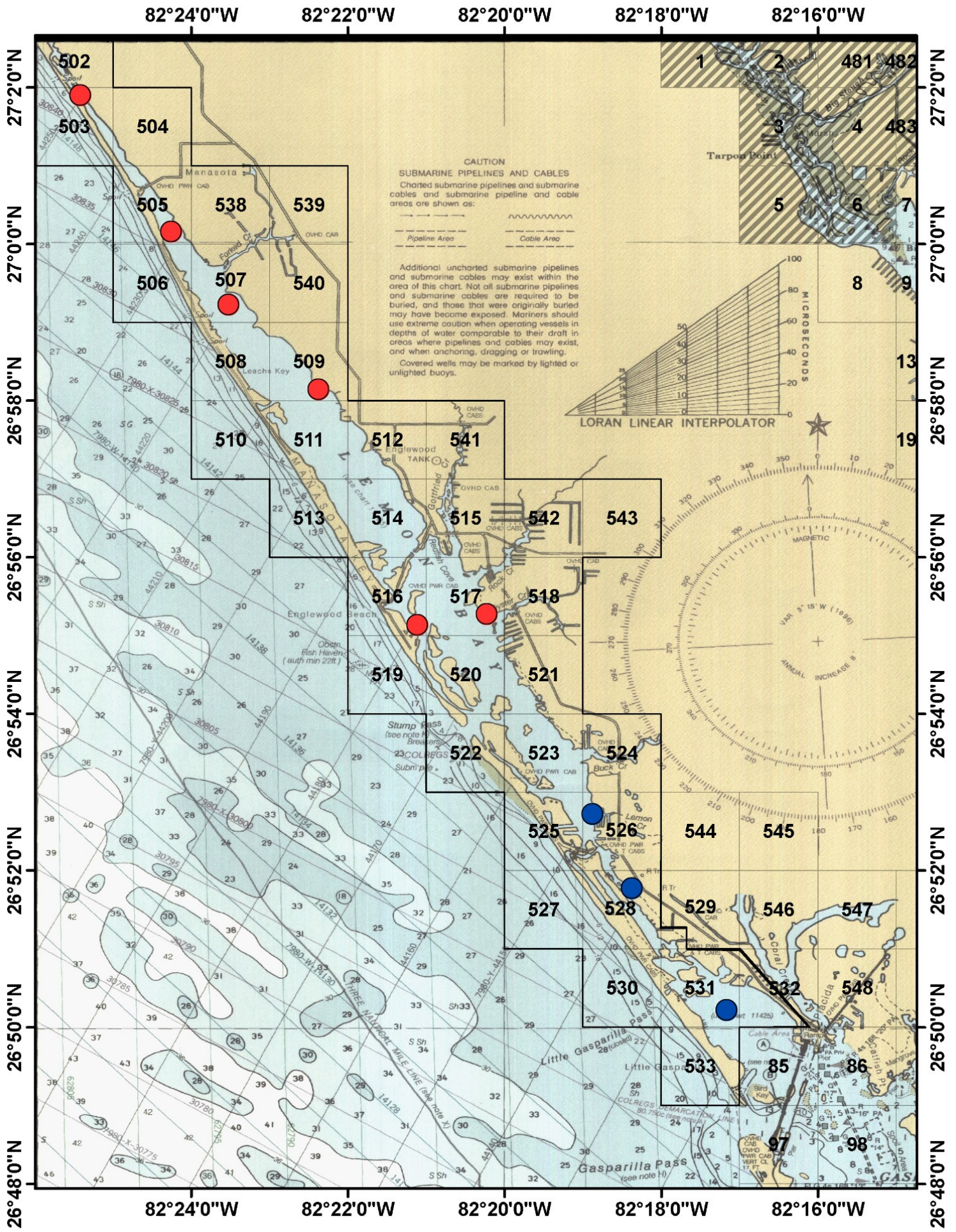


## Charlotte Harbor Site Coordinates

Site Number	Depth *At mean low tide  (feet)	Degrees Minutes Seconds (DMS)						Decimal Degrees (DD)	
		Latitude (North)			Longitude (West)			Latitude	Longitude
		Degrees	Minutes	Seconds	Degrees	Minutes	Seconds		
55	4	26°	54'	10"	82°	5'	52"	26.9029	-82.0978
62	4	26°	53'	28"	82°	5'	45"	26.8912	-82.0960
68	6	26°	52'	54"	82°	4'	34"	26.8817	-82.0762
69	2	26°	52'	19"	82°	3'	33"	26.8722	-82.0593
76	4	26°	51'	55"	82°	3'	45"	26.8654	-82.0627
82	4	26°	50'	38"	82°	4'	4"	26.8439	-82.0678
83	2	26°	50'	45"	82°	3'	49"	26.8459	-82.0637
94	2	26°	49'	30"	82°	4'	3"	26.8252	-82.0677
95	3	26°	49'	18"	82°	3'	53"	26.8218	-82.0649
109	5	26°	49'	1"	82°	4'	3"	26.8172	-82.0675
110	3	26°	48'	34"	82°	3'	30"	26.8096	-82.0584
124	4	26°	47'	17"	82°	3'	55"	26.7882	-82.0655
125	3	26°	47'	59"	82°	3'	37"	26.7999	-82.0604
137	5	26°	46'	13"	82°	3'	56"	26.7704	-82.0656
138	5	26°	46'	13"	82°	3'	56"	26.7705	-82.0656
150	3	26°	45'	7"	82°	4'	13"	26.7522	-82.0704
151	5	26°	45'	42"	82°	4'	9"	26.7619	-82.0694
22	3	26°	57'	56"	82°	11'	25"	26.9656	-82.1905
23	2	26°	57'	32"	82°	11'	0"	26.9589	-82.1834
30	2	26°	56'	49"	82°	12'	3"	26.9471	-82.2011
31	3	26°	56'	28"	82°	10'	25"	26.9412	-82.1736
41	2	26°	55'	31"	82°	10'	51"	26.9255	-82.1809
42	3	26°	55'	14"	82°	9'	5"	26.9207	-82.1517
43	2	26°	55'	31"	82°	8'	9"	26.9253	-82.1361
34	4	26°	56'	36"	82°	7'	11"	26.9434	-82.1197
25	4	26°	57'	14"	82°	6'	23"	26.9541	-82.1066
26	2	26°	57'	11"	82°	5'	37"	26.9532	-82.0939
50	3	26°	54'	35"	82°	10'	27"	26.9100	-82.1742
58	3	26°	53'	48"	82°	10'	10"	26.8969	-82.1696
63	2	26°	52'	15"	82°	9'	34"	26.8709	-82.1596
70	2	26°	51'	24"	82°	9'	19"	26.8568	-82.1555
77	3	26°	50'	28"	82°	9'	10"	26.8412	-82.1531
89	3	26°	49'	55"	82°	9'	0"	26.8321	-82.1501
90	3	26°	49'	52"	82°	8'	10"	26.8312	-82.1361
105	3	26°	48'	39"	82°	8'	51"	26.8109	-82.1476
120	2	26°	47'	7"	82°	8'	53"	26.7853	-82.1483









## Lemon Bay Site Coordinates

Site Number	Depth *At mean low tide  (feet)	Degrees Minutes Seconds (DMS)						Decimal Degrees (DD)	
		Latitude (North)			Longitude (West)			Latitude	Longitude
		Degrees	Minutes	Seconds	Degrees	Minutes	Seconds		
503	4	27 <sup>o</sup>	1'	51"	82 <sup>o</sup>	25'	23"	27.0308	-82.4230
505	3	27 <sup>o</sup>	0'	4"	82 <sup>o</sup>	24'	11"	27.0011	-82.4030
517	4	26 <sup>o</sup>	55'	34"	82 <sup>o</sup>	20'	32"	26.9264	-82.3424
509	3	26 <sup>o</sup>	58'	1"	82 <sup>o</sup>	22'	17"	26.9672	-82.3715
516	4	26 <sup>o</sup>	55'	8"	82 <sup>o</sup>	21'	3"	26.9190	-82.3509
507	4	26 <sup>o</sup>	59'	22"	82 <sup>o</sup>	23'	41"	26.9897	-82.3949
531	4	26 <sup>o</sup>	50'	4"	82 <sup>o</sup>	17'	15"	26.8346	-82.2876
526	4	26 <sup>o</sup>	52'	33"	82 <sup>o</sup>	18'	52"	26.8760	-82.3147
528	3	26 <sup>o</sup>	51'	51"	82 <sup>o</sup>	18'	31"	26.8643	-82.3087