



# Commercial Clippings

FOR THE NORTHEAST FLORIDA GREEN INDUSTRY  
*Serving Clay, Duval, and Nassau County*

February/March 2013

Issue 24, Page 1



## In this Issue:

New Exam Procedures & Gi-BMP Update	pg 1
Upcoming Classes	pg 2-3
Jacksonville Landscape Show	pg 4
Do You Know?	pg 4
Featured Creature	pg 5
Pruning Crapemyrtles	pg 6
Exam Testing Procedures	pg 7
Contact Us	pg 8



## New Restricted-Use Pesticide Exam Procedure

By Erin Harlow

As of February 1, 2013, there are new pesticide exam testing procedures for Duval, Palm Beach, and Hendry counties. These counties are participating in a pilot program that provides computerized pesticide exams. Eventually, more counties throughout the state will have computerized testing as well.

Currently, only restricted-use exams are given online, so that means limited and public health exams will still have to be taken on paper until they are also moved to online. There are new procedures to take an exam in Duval County. For more information and how to register to take an exam, turn to page 7.



## DVD Now Available for In-house Use to Provide the Green Industries Best Management Practices (GI-BMPs) to Employees

By Erin Harlow

You can now use a DVD to provide the GI-BMPs to employees. The DVDs are free and can be requested from the state BMP office in Gainesville. Once an employee registers online they can view the DVD. They can then either pay \$15.00 and take the exam online, they can print a voucher and call the Extension Office to schedule an exam at no charge, or the Pest Control Operator in Charge can administer the exam at no charge. Groups or individuals can view the DVD at one time and the Extension Office and certified BMP instructor will work with you on administering exams if there is a large group. For more information on how to request a DVD, register groups or individuals, or procedures, please visit <http://gibmp.ifas.ufl.edu>.

<http://duval.ifas.ufl.edu>

**All Classes Require Pre-Registration** and will be held at the Duval County Extension Office, 1010 N McDuff Ave, Jacksonville, FL 32254 unless otherwise stated. To register visit us at <http://duval.ifas.ufl.edu> and click Commercial Horticulture/Calendar or call Becky Davidson at 904-255-7450. You can now pay online with a credit card.

**February 26, 2013**  
Tuesday  
(Duval)

### **Best Management Practices for the Protection of Water Resources by the Green Industries (GI-BMPs)**

8:30 am – 3:30 pm

\$25.00

4 CEUs: 2 CORE & 2 L&O, 2 LCLM, 2 LL&O, 2 O&T or 2 Pvt

4 LA CEUs

To register, download the brochure, or for more information about the workshop, please visit: <http://duval.ifas.ufl.edu/GI-BMPs.shtml>.

This is the pre-requisite class for the Urban Fertilizer License. Everyone who works with fertilizers is required to have this license by Jan 1, 2014, even if you are licensed in another category including pest control operators.

**April 23, 2013**  
Tuesday  
(Duval)

**February 7, 2013**  
Thursday  
(Waycross, GA)

### **Southeast Area Landscape Training (SALT)**

8:00 am - 4:00 pm

\$50.00 at the door

FL, GA, ISA, FNGLA CEUs available

Lunch included

Topics include using mobile apps, working around Africanized bees, weed identification and control, summer annual color, the future of zoysiagrass, choosing quality trees, \$\$\$ in the soil, and new OSHA requirements.

Location: Okefenokee Technical College - 1701 Carswell Ave, Waycross, GA 31503  
Call: 912-287-5854 to pre-register.

**February 14, 2013**  
**February 15, 2013**  
Thursday and  
Friday (Duval)

### **Jacksonville Landscape Show**

9:00 am - 4:00 pm

\$10.00 for show entrance both days; \$10.00 per seminar

Location: Jacksonville Fairgrounds - 510 Fairgrounds Place in the Expo Hall

Come visit the premier local Landscape Show including vendors, seminars, networking opportunities, and the auction.

See page 4 for more details.

**February 19, 2013**  
Tuesday  
(Duval)

### **Florida Turfgrass Association Regional Seminars**

Visit <https://www.ftga.org/events/2013-turf-seminars> for more information or call 863-688-9413 to pre-register.

**All Classes Require Pre-Registration** and will be held at the Duval County Extension Office, 1010 N McDuff Ave, Jacksonville, FL 32254 unless otherwise stated. To register visit us at <http://duval.ifas.ufl.edu> and click Commercial Horticulture/Calendar or call Becky Davidson at 904-255-7450. You can now pay online with a credit card.

**March 22, 2013  
Friday  
(Duval)**

### **Limited Commercial Landscape Maintenance Workshop**

8:15 am - 3:00 pm - Full Day; 8:15 am – 12:00 pm - Half Day  
\$30.00 for either full or half day

6 CEUs Total: 3 CORE & 3 LCLM, 3 LL&O, or 3 L&O

Lunch included, textbooks not included

Optional LCLM or LL&O Exam at 3:00 pm

You must have all required paperwork to take the exam.

To register, download the brochure, or for more information about the exam or books, please visit: <http://duval.ifas.ufl.edu/LCLM2012.shtml>.

This class is designed for people who do not have their license yet. If you are re-certifying your LCLM or LL&O you should attend the Advanced Landscape classes.

**March 27 & 28, 2013  
Wed & Thurs  
(Duval)**

### **Two-Day Professional Landscape Training**

8:30 am - 4:30 pm  
\$120.00

This can be used as a prep class for the Florida Nursery, Growers, and Landscape Association (FNGLA) Certified Horticulture Professional exam (FCHP) or by individuals wanting to gain more extensive knowledge in landscaping. The FNGLA FCHP manual will be used for this class and provided in the cost of the class. If you already have a manual please let us know and the cost of the class will be adjusted by \$75.00.

This is an intensive hands-on 2-day course. Lunch and snacks provided.

**April 9, 2013  
Tuesday  
(Duval)**

### **Pest Control Operator CEU Day**

Save the Date! Details to come.  
2 CORE, 2 L&O, 2 GHP, and 2 WDO CEUs will be available.

**April 15, 2013  
Monday  
(Duval)**

### **Professional Africanized Honey Bee Removal**

1:00 pm - 4:00 pm  
FREE

This will be taught by Dr. Jamie Ellis from UF's AFBEE Program. It is for GHP operators and technicians. Upon completion, a company can then be added to the state list of approved/recommended companies to remove bees. This is the list that state agencies give to anyone who needs bee removal since relocation is no longer recommended.

## 2013 Jacksonville Landscape Show Seminar Schedule February 14 & 15, 2013

- Avoiding Trouble - Working Safely Around Plants and Power Lines
- New and Emerging Pests in Florida
- Crapemyrtles: Proper Pruning and New Selections
- Integrated Pest Management Techniques for the Landscape
- Crime Prevention Through Environmental Design
- Using Climate Data for Effective Turfgrass Weed Control
- Recognizing Plant Sensitivity to Chemicals

Available CEUs include: FL pesticide (Thurs: 2 CORE & 2 L&O, 2 LL&O, 2 O&T, 2 LCLM, 2 Pvt; Fri: 3 L&O, 3 LL&O, 3 O&T, 3 LCLM, or 3 Pvt), GA pesticide (cat 24), ISA, and FNGLA CEUs

**Registration is available online at [www.nefngla.org](http://www.nefngla.org)  
For a class schedule with approved CEUs visit the website above.**



## Do you know what this is?

By Amy Morie, Clay County Extension

Waving its many 'arms,' wearing wraith-like white garb, next month's puzzler looks like a ghost in the landscape, or maybe even an abominable "snowbug"! No, it's not a feather that drifted to rest in the garden. Nor is it a bit of lint escaped from the dryer.

Though at first glance it looks like it could be a serious problem, look closer! What superficially resembles a plant danger is actually a

boon. It is more than likely making a meal out of some of your garden bad guys! This is the larval stage for this organism, and both larva and adults are ravenous feeders of several types of harmful insects – including one particular pest favorite who these garden ghosts are named for. Does this ghostly insect have you stumped? Take heart, for this friend in the garden is anything but scary – you'll be lucky to have them in your corner! Look for next month's feature revealing this friendly insect and how it helps your job in keeping a key pest at bay.





## Milkweed Aphids - *Aphis nerii*

By Amy Morie, Clay County Extension

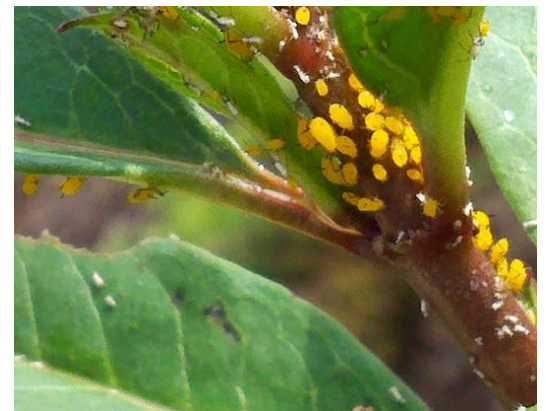
Last issue we looked at some dainty yet prolific ladies that have been lingering through the year thanks to unseasonably warm winter temperatures. Did you guess our ladies were aphids? More specifically, these are Milkweed Aphids - *Aphis nerii*. They are also sometimes referred to as oleander aphids. Their bright coloration is sure hard to miss! These ladies are not considered welcome visitors in the garden. Unfortunately, milkweed aphids show up in an inconvenient location in the garden – right where the client is trying to encourage butterflies! Chemical controls may knock out the very insects being encouraged in the garden, as well as beneficials like the Lady Bird Beetle (pictured upper right) and Lacewing, whose larva eat aphids voraciously. As butterfly gardening becomes more popular, more clients are interested in encouraging the full lifecycle of butterflies.



It's good relations to make sure you're clear on the client's garden intent and discuss all the options. So, what can you do to deter these lively, yet life-force sucking ladies from hosting a garden party in your client's plants? First, be on heightened awareness and make checking for aphids part of your regular inspections. Try to notice them before their numbers get out of hand. If you observe a building population of these ladies, the first line of defense is to give it a blast – of water! On all but the most delicate of plants, milkweed and other aphids can often be addressed with a



strong stream of water. If the problem persists, horticultural soap, neem, or horticultural oils are all options. Only use as needed, though, as all will have some impact on the beneficial insect populations that are the natural defense against aphids and other pests. With all of these products, coverage and timing are essential so be sure to thoroughly treat the plant under attack and follow all manufacturer's directions. With observation and careful management, you can keep the butterflies and beneficials happy, plants healthy, and you client smiling! For more information on milkweed aphids visit <http://edis.ifas.ufl.edu/in520>.



## How to Properly Prune Crapemyrtles

By Larry Figart, UF/Duval County Urban Forester

It is that time of year when your clients start thinking about pruning their crapemyrtles. Unfortunately, for many folks that involves topping the tree. Topping requires less skill, and time than other pruning methods, but it also results in delayed flowering, weak growth, and unattractive sprouting. Not only is topping crapemyrtles ugly, it increases maintenance requirements on an otherwise low-maintenance tree.

In the past, it was true that you pruned crapemyrtles to reduce powdery mildew infestations. With today's resistant cultivars, crapemyrtles require very little pruning. In fact, a crapemyrtle planted in full sun with plenty of space to grow needs little to no pruning at all.

If you find yourself in the position to prune crapemyrtles, here are a few simple steps to follow. First, prune sucker sprouts and basal sprouts. If left to grow, these sprouts may form woody stems that eventually compete with existing main stems.

Second, prune any rubbing or crossing branches, as well as, dead branches. This may include branches that are crossing through the canopy from one side to another. As always make the pruning cuts at the branch collar.



Third, (this one is optional) tip prune the branches to remove spent flower buds. This is also called pencil pruning because the branches removed are no thicker than a pencil. This type of pruning is the most labor intensive, but it also results in a more aesthetically attractive tree.

Recent research from the University of Florida has demonstrated that the number of crapemyrtle blooms decrease in direct correlation to the size of the branch removed. In other words the larger the branch removed, the fewer the blooms. However, blooms on pruned trees were larger than blooms on unpruned trees. To receive the benefit of larger flowers from pruning, prune just pencil sized branches without jeopardizing overall tree health caused by topping the tree. For more information refer to:

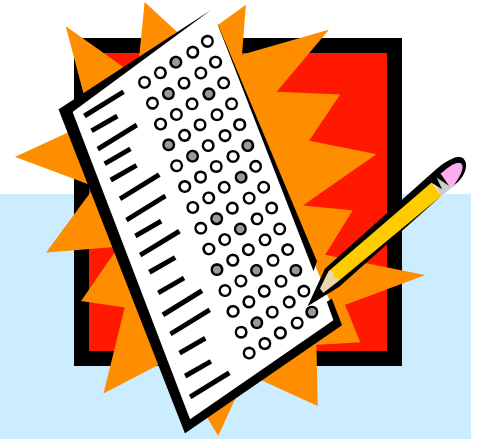
<http://edis.ifas.ufl.edu/pdffiles/EP/EP39900.pdf>

If you would like more information on crapemyrtle cultivars, selection, pruning, or care then come visit the Jacksonville Landscape Show and attend Dr. Gary Knox's presentation on Thursday, February 14th. Dr. Knox is UF's leading researcher on crapemyrtles.



*Continued from Page 1*

## New Pesticide Exam Procedures



### How do I register to take an exam in Duval County?

If you want to take a Limited Exam or a Public Health exam then call Becky Davidson at the Duval County office at 904-255-7450 to schedule. Those are not available online yet.

If you want to take a Restricted-Use Exam (Ornamental & Turf, Private, Aquatics, etc.)

1. Go to this website at <https://aesecomm.freshfromflorida.com> and click “Apply for a New License” or <https://pesticideexam.ifas.ufl.edu/> and follow the steps.
2. Fill out the information and you will receive a voucher number. Write this down, print it, or email it to yourself.
3. Then in the next window click schedule your exam. You will need your voucher number to do this.
4. Select your preferred test site and time.
5. You are all set. Make sure you bring your voucher number and driver’s license to the exam.

## Frequently Asked Questions (FAQs)

### Which tests are available online?

Currently only Restricted-use exams are available. If you want to take the public health or a limited exam you need to call the office at 904-255-7450 and speak with Becky to schedule the exam.

### When is testing?

Testing for all exams is the first Wednesday of every month. At 8:30 am there is an optional CORE review video provided and at 9:15 am we begin testing.

### Do I have to take my exam online?

No you do not, but you still have to go online and receive a voucher number at the website above.

### Will I find out my score that day if I use a computer?

Yes, your score will be printed for you to take back to your office. This can only be done for the computerized tests.



Duval County Extension  
1010 N. McDuff Avenue  
Jacksonville, FL 32254  
(904) 255-7450  
Fax: (904) 387-8902  
Website: <http://duval.ifas.ufl.edu>

Non-Profit Org.  
U.S. Postage Paid  
Jacksonville, FL  
Permit No. 1482

ADDRESS SERVICE REQUESTED



## **Local EXTENSION Offices**



Duval County  
1010 N. McDuff Avenue  
Jacksonville FL 32254  
(904) 255-7450  
FAX 387-8902  
<http://duval.ifas.ufl.edu>

Erin Harlow - Commercial Horticulture/Urban IPM  
[erine@coj.net](mailto:erine@coj.net)

Larry Figart - Urban and Community Forestry  
[lfigart@coj.net](mailto:lfigart@coj.net)

Rebecca Jordi - Co. Extension Director  
Nassau County  
543350 US Highway 1  
Callahan, FL 32011-6486  
(904) 491-7340  
<http://nassau.ifas.ufl.edu/>  
[rljordi@ufl.edu](mailto:rljordi@ufl.edu)

Amy Morie - Horticulture  
Clay County  
2463 SR 16 West  
Green Cove Springs, FL 32043  
(904) 284-6355  
<http://clay.ifas.ufl.edu/>  
[amorie@ufl.edu](mailto:amorie@ufl.edu)

For individuals requiring special accommodations, please contact our office (904/255-7450) within a minimum of 5 working days of the program. For persons with hearing or speech impairments, when contacting our office, please use the Florida Relay Service at 1-800-955-8771 (TDD). Your comments and input are necessary for this to be a useful tool for all of us.

Extension Programs are open to all regardless of race, creed, color, sex, sexual orientation, marital status, age, disability, religion, national origin, political opinions or affiliations.