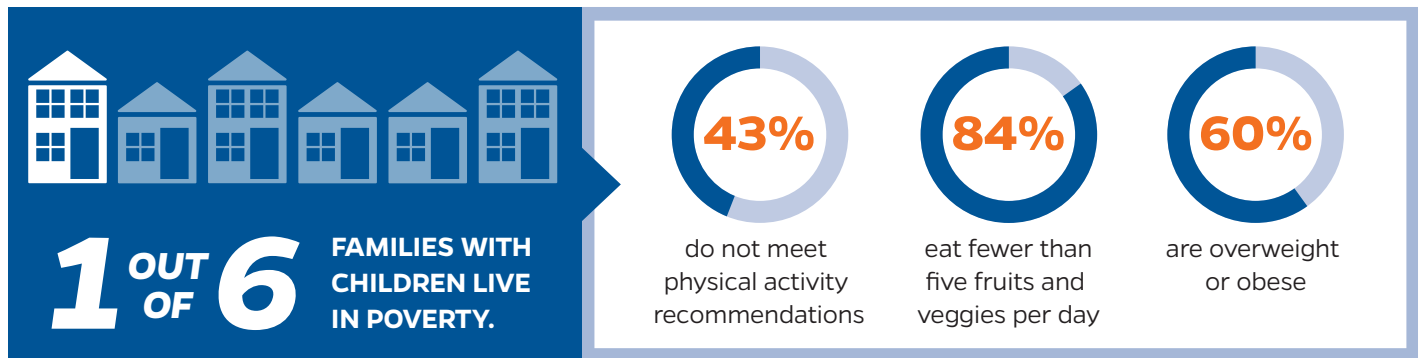


EFNEP IN ESCAMBIA COUNTY by the numbers

NEED



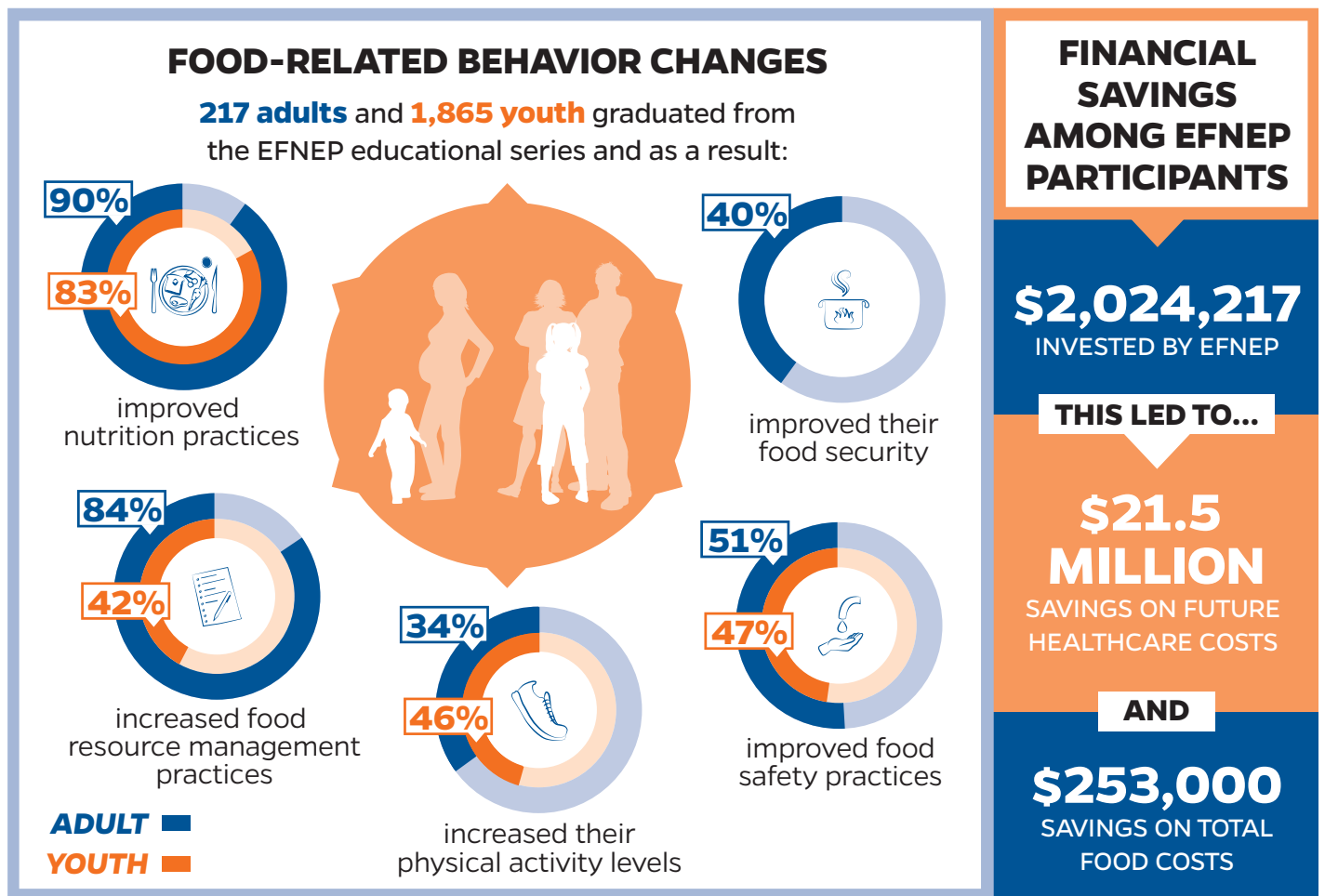
POOR HEALTH DISPROPORTIONALLY AFFECTS MINORITY FAMILIES.

44% EFNEP participants report belonging to an ethnic or racial minority group.

LOW-INCOME FAMILIES HAVE A HIGHER RISK FOR DEVELOPING NUTRITION-RELATED DISEASES.

96% EFNEP participants report earning an income that fell below the federal poverty level.

IMPACT



Radhika, R. et al. 2002. "Cost-Benefit Analysis Indicates the Positive Economic Benefits of the Expanded Food and Nutrition Education Program Related to Chronic Disease Prevention." *Journal of Nutrition Education and Behavior* 32(2): 6-37.

<http://www.floridacharts.com>
<https://aspe.hhs.gov/poverty-guidelines>