

Garden Notes

May 2024

850-475-5230

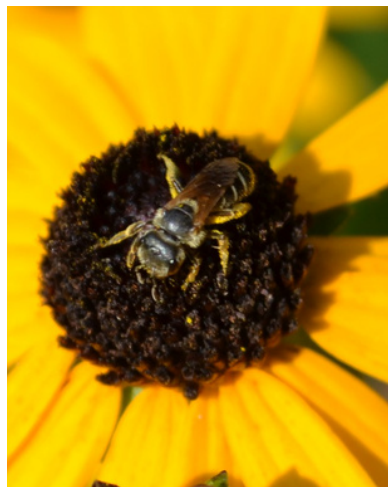
Beth Bolles: bbolles@ufl.edu

Lydia Purvis: l.purvis@ufl.edu



Great Florida Pollinator Census

Florida has joined other states to participate in a pollinator census. On August 23-24, you have the opportunity to count pollinators on a specific plant in your yard for 15 minutes. Visit <https://gsepc.org/> to learn about the process and look for more info from Escambia Extension soon.



Chamberbitter

The little mimosa looking weed is germinating now. Pre emergent herbicides can help reduce germinating seeds. Apply a good layer of mulch around plants and hand pull what you can before weeds mature. Mowing is not a very successful control.



Salvia 'Amistad'

Purple is such a beautiful color in the garden and 'Amistad' salvia has spikes of blooms that are dark purple.

Salvias in general grow well in North Florida. They are heat tolerant plants but many grow best with dappled shade or a little break from afternoon sun.

"Amistad" has clumping growth with many stems. A plant can grow about 4 or 5 feet tall with flowers. This plant has returned each spring for over 5 years in the Escambia County Demonstration Garden.