



## Jackson County 2018 Weather Data

*67 Years of Weather Data Recorded at the UF/IFAS Marianna North Florida Research and Education Center*



**Doug Mayo**  
Jackson County Extension Director

1952-2008 Rainfall Data compiled by  
Ed Jowers, Emeritus County Extension Director

Data provided by Florida Automated Weather Station (FAWN)  
UF/IFAS North Florida Research and Education Center  
Greenwood, Florida



<http://fawn.ifas.ufl.edu/station.php?id=130>

Tower Name	Tower Number	Latitude Degree, Minutes	Latitude Degrees Minutes, Seconds	Latitude Degrees Decimal	Longitude Degree, Minutes	Longitude Degrees Minutes, Seconds	Longitude Degrees Decimal	Elevation Feet
Marianna	130.00	N 30°51.000'	N 30°50'00.00"	N 30.85000°	-85°09.910'	-85°09'54.60"	-85.16516°	115'

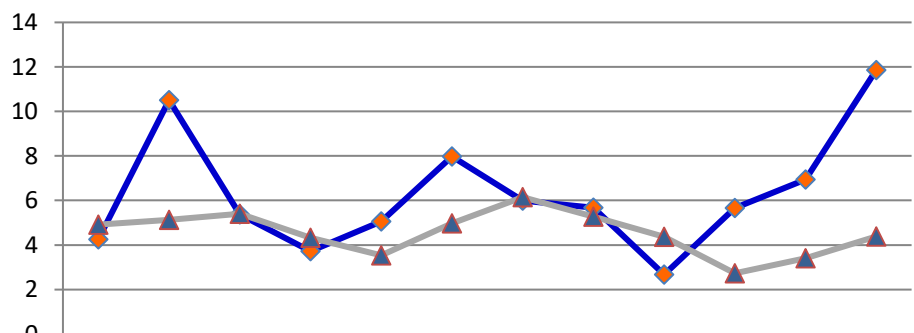
## 2018 UF/IFAS FAWN Marianna Weather Summary

Month	6' Air Temp			Soil Temp			Rainfall Inches	Dev from Hist Avg
	High	Low	Avg	High	Low	Avg		
January	75	21	46	68	36	51	4.3	-0.6
February	83	31	63	81	47	66	10.5	5.4
March	83	31	59	82	48	65	5.4	0.0
April	84	40	65	89	56	71	3.7	-0.6
May	94	57	75	100	71	82	5.1	1.5
June	95	64	79	104	69	86	8.0	3.0
July	94	71	79	106	78	87	6.0	-0.2
August	93	68	78	103	76	85	5.7	0.4
September	94	68	79	99	76	85	2.7	-1.7
October	91	48	72	92	61	77	5.7	2.9
November	82	31	57	77	45	62	6.9	3.5
December	77	30	55	71	44	57	11.9	7.5
<b>2018</b>	<b>95</b>	<b>21</b>	<b>67</b>	<b>106</b>	<b>36</b>	<b>73</b>	<b>75.7</b>	<b>21.1</b>

*Data: UF/IFAS Florida Automated Weather Network Marianna Station*

Total days <32<sup>0</sup>    20    Total days >95<sup>0</sup>    1

### Monthly Rainfall @ Marianna FAWN



	JAN	FEB	MAR	APR	MAY	JUNE	JULY	AUG	SEP	OCT	NOV	DEC
2018	4.26	10.50	5.38	3.72	5.06	7.97	5.99	5.67	2.67	5.66	6.94	11.86
Historic Avg	4.91	5.14	5.41	4.32	3.54	4.97	6.15	5.27	4.37	2.73	3.41	4.39

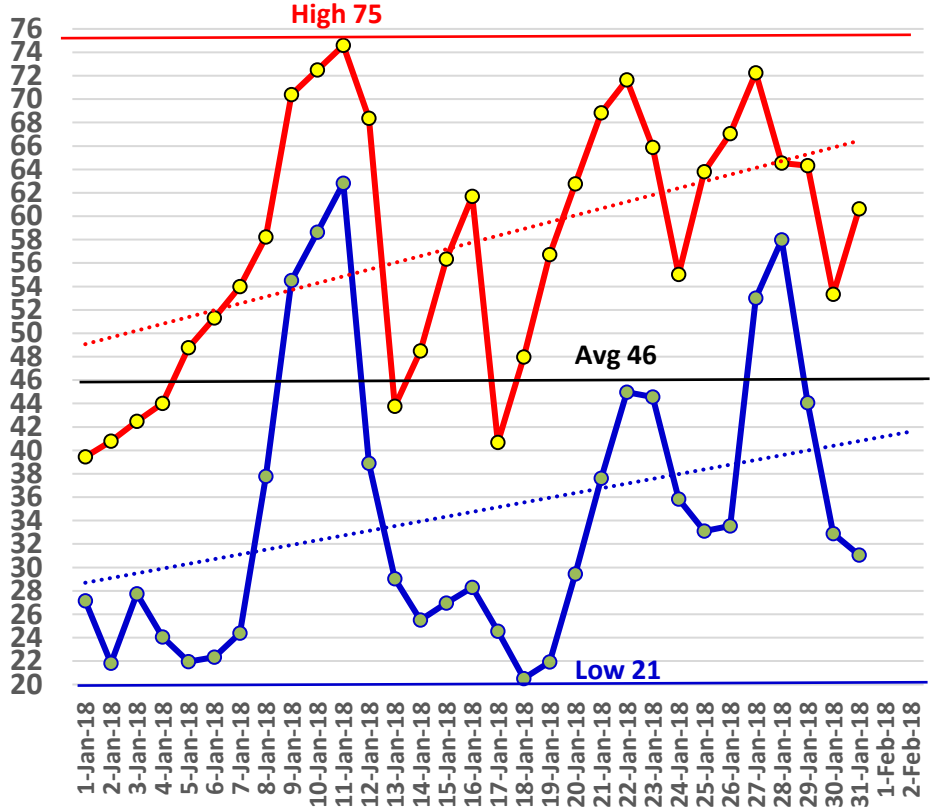
◆ 2018      ▲ Historic Avg

# January Daily Weather Data

Temperature							Precipitation			
Date	Air Temp 6 ft			Soil Temp 4 inch			Rain	Evapo Trans		
	Avg	Min	Max	Avg	Min	Max	Inches	Inches		
1-Jan-18	33	27	39	47	42	52	0.01	0.03		
2-Jan-18	30	22	41	43	38	51	0.00	0.03		
3-Jan-18	33	28	42	43	40	49	0.00	0.03		
4-Jan-18	33	24	44	42	37	50	0.00	0.03		
5-Jan-18	33	22	49	43	37	52	0.00	0.03		
6-Jan-18	36	22	51	44	38	53	0.00	0.03		
7-Jan-18	40	24	54	45	39	54	0.00	0.04		
8-Jan-18	49	38	58	48	45	52	0.00	0.05		
9-Jan-18	60	55	70	55	51	62	0.00	0.05		
10-Jan-18	64	59	72	60	56	64	0.04	0.05		
11-Jan-18	66	63	75	64	61	68	0.01	0.06		
12-Jan-18	58	39	68	62	54	67	0.94	0.06		
13-Jan-18	35	29	44	49	44	54	0.00	0.03		
14-Jan-18	35	26	48	46	40	55	0.00	0.03		
15-Jan-18	40	27	56	48	41	58	0.00	0.04		
16-Jan-18	45	28	62	49	42	57	0.00	0.05		
17-Jan-18	30	25	41	45	39	50	0.03	0.03		
18-Jan-18	32	21	48	43	36	52	0.00	0.04		
19-Jan-18	38	22	57	45	38	56	0.00	0.04		
20-Jan-18	47	29	63	49	41	58	0.00	0.05		
21-Jan-18	52	38	69	54	47	64	0.00	0.05		
22-Jan-18	60	45	72	56	51	61	0.03	0.06		
23-Jan-18	58	45	66	60	54	66	0.01	0.06		
24-Jan-18	46	36	55	53	49	58	0.00	0.05		
25-Jan-18	47	33	64	54	46	64	0.00	0.05		
26-Jan-18	51	34	67	54	46	62	0.00	0.06		
27-Jan-18	61	53	72	59	54	65	0.00	0.07		
28-Jan-18	61	58	65	61	59	63	3.18	0.04		
29-Jan-18	57	44	64	60	53	64	0.01	0.06		
30-Jan-18	44	33	53	53	47	60	0.00	0.05		
31-Jan-18	45	31	61	52	44	63	0.00	0.06		
<b>High</b>			<b>75</b>			<b>68</b>				
<b>Low</b>		<b>21</b>			<b>36</b>					
<b>Average</b>	<b>46</b>	35	58	<b>51</b>	46	58				
Days over 95 <sup>0</sup>				<b>Total for Month</b>			<b>4.26</b>	1.41	4.3	1.4
				<b>Number of Rain Days</b>			9.00		9.0	
				<b>Historic Average</b>			4.91		4.9	
Days below 32 <sup>0</sup>	16			<b>Deviation from Average</b>			-0.65		-0.6	
				<b>Net Gain/loss (Rain - ET)</b>				<b>2.85</b>		2.9

Year Cumulative  
Rain      ET

# Jan Marianna FAWN 6' Air Temps

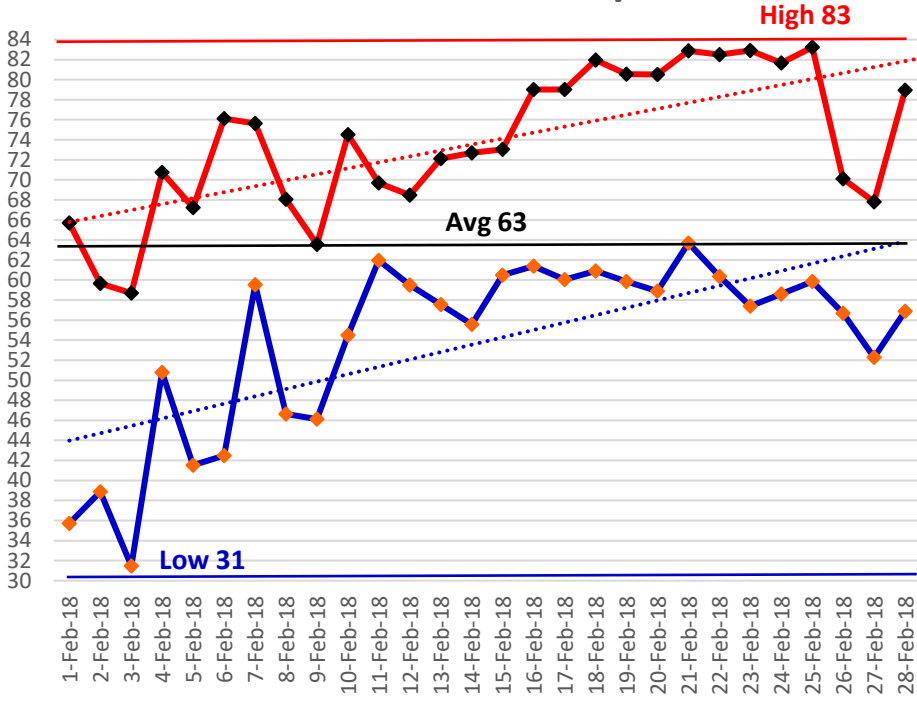


## February Daily Weather Data

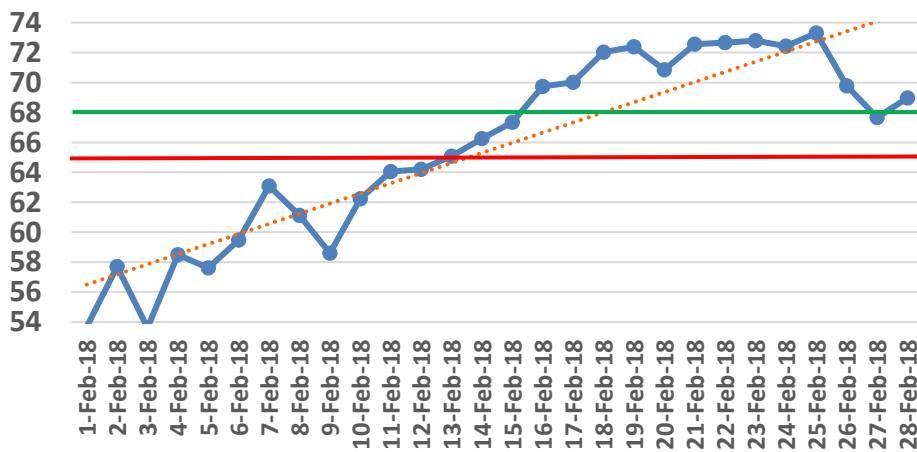
Date	Temperature						Precipitation			
	Air Temp 6 ft			Soil Temp 4 inch			Rain	Evapo Trans		
	Avg	Min	Max	Avg	Min	Max	Inches	Inches		
1-Feb-18	54	36	66	54	47	60	0.00	0.06		
2-Feb-18	52	39	60	58	52	65	0.00	0.06		
3-Feb-18	47	31	59	54	47	61	0.00	0.06		
4-Feb-18	60	51	71	58	55	64	1.47	0.07		
5-Feb-18	53	42	67	58	50	67	0.00	0.07		
6-Feb-18	60	42	76	59	51	69	0.00	0.08		
7-Feb-18	64	60	76	63	61	67	1.21	0.06		
8-Feb-18	56	47	68	61	56	68	0.02	0.08		
9-Feb-18	56	46	64	59	54	64	0.00	0.06		
10-Feb-18	64	55	75	62	59	66	0.00	0.07		
11-Feb-18	64	62	70	64	63	65	5.75	0.04		
12-Feb-18	64	59	68	64	62	68	1.50	0.05		
13-Feb-18	63	58	72	65	62	70	0.05	0.07		
14-Feb-18	63	56	73	66	61	74	0.00	0.08		
15-Feb-18	66	60	73	67	64	73	0.00	0.08		
16-Feb-18	70	61	79	70	66	76	0.00	0.1		
17-Feb-18	69	60	79	70	65	77	0.00	0.1		
18-Feb-18	71	61	82	72	66	81	0.00	0.1		
19-Feb-18	69	60	81	72	68	81	0.00	0.1		
20-Feb-18	70	59	81	71	66	77	0.00	0.09		
21-Feb-18	72	64	83	73	68	80	0.00	0.1		
22-Feb-18	70	60	82	73	67	80	0.00	0.1		
23-Feb-18	70	57	83	73	67	81	0.00	0.1		
24-Feb-18	70	59	82	72	67	79	0.00	0.1		
25-Feb-18	68	60	83	73	70	80	0.00	0.1		
26-Feb-18	63	57	70	70	66	74	0.39	0.07		
27-Feb-18	60	52	68	68	61	76	0.11	0.09		
28-Feb-18	67	57	79	69	63	76	0.00	0.09		
<b>High</b>			<b>83</b>			<b>81</b>				
<b>Low</b>		<b>31</b>			<b>47</b>					
<b>Average</b>	<b>63</b>	54	74	<b>66</b>	61	72				
Days over 95 <sup>o</sup>			0	<b>Total for Month</b>			<b>10.50</b>	2.23	14.8	3.6
				<b>Number of Rain Days</b>			8.00		17.0	
				<b>Historic Average</b>			5.14		10.0	
Days below 32 <sup>o</sup>		1		<b>Deviation from Average</b>			5.36		4.7	
				<b>Net Gain/loss (Rain - ET)</b>				<b>8.27</b>		11.1

<b>Year Cumulative</b>	
<b>Rain</b>	<b>ET</b>
14.8	3.6
17.0	
10.0	
4.7	
	11.1

## February Marianna FAWN 6' Air Temps



## February 18 Avg Soil Temps Marianna

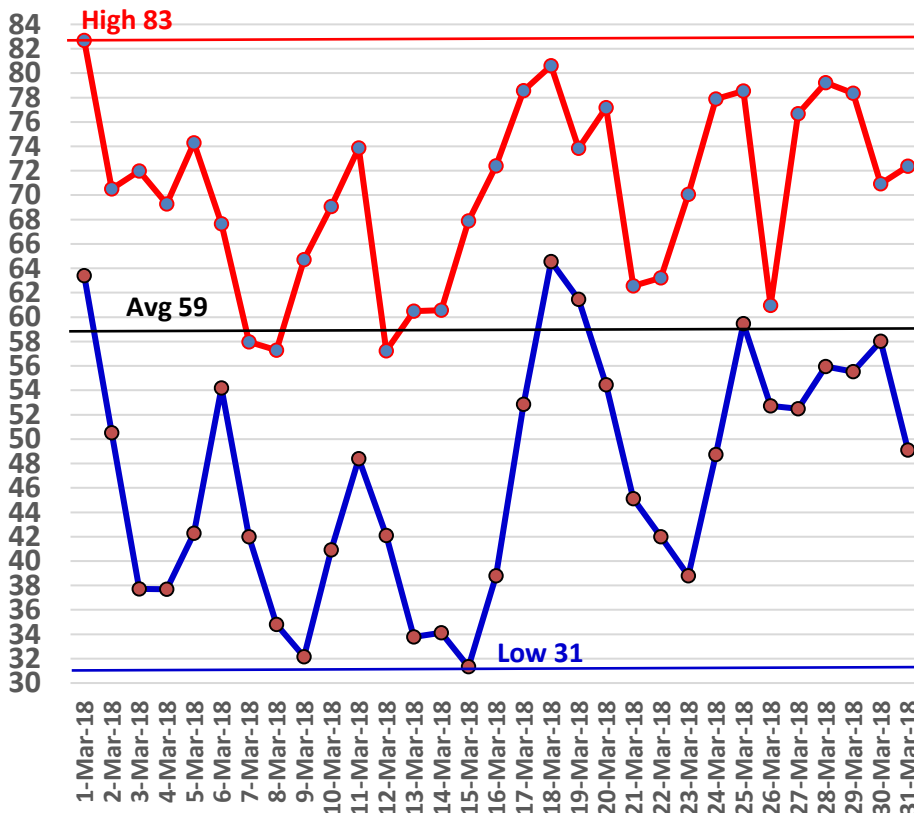


# March Daily Weather Data

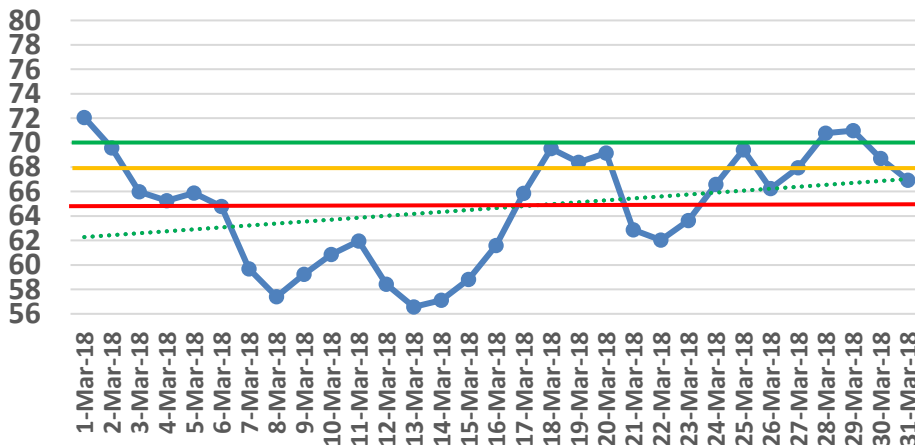
Temperature							Precipitation			
Date	Air Temp 6 ft			Soil Temp 4 inch			Rain	Evapo Trans		
	Avg	Min	Max	Avg	Min	Max	Inches	Inches		
1-Mar-18	72	63	83	72	68	78	0.00	0.11		
2-Mar-18	61	51	71	70	64	78	0.00	0.1		
3-Mar-18	54	38	72	66	58	76	0.00	0.09		
4-Mar-18	54	38	69	65	57	76	0.00	0.09		
5-Mar-18	58	42	74	66	59	76	0.00	0.09		
6-Mar-18	61	54	68	65	61	67	0.00	0.06		
7-Mar-18	51	42	58	60	55	66	0.62	0.08		
8-Mar-18	46	35	57	57	50	67	0.00	0.08		
9-Mar-18	49	32	65	59	49	71	0.00	0.08		
10-Mar-18	56	41	69	61	53	70	0.00	0.09		
11-Mar-18	59	48	74	62	57	69	0.00	0.08		
12-Mar-18	51	42	57	58	53	63	0.78	0.08		
13-Mar-18	47	34	60	57	48	67	0.00	0.09		
14-Mar-18	47	34	61	57	49	67	0.00	0.09		
15-Mar-18	50	31	68	59	49	71	0.00	0.09		
16-Mar-18	58	39	72	62	53	71	0.00	0.09		
17-Mar-18	66	53	79	66	59	74	0.00	0.1		
18-Mar-18	69	65	81	70	66	77	1.00	0.09		
19-Mar-18	68	61	74	68	65	71	0.98	0.07		
20-Mar-18	68	54	77	69	63	75	0.42	0.13		
21-Mar-18	54	45	63	63	57	71	0.00	0.1		
22-Mar-18	52	42	63	62	54	72	0.00	0.1		
23-Mar-18	55	39	70	64	55	75	0.00	0.1		
24-Mar-18	63	49	78	67	59	76	0.00	0.12		
25-Mar-18	69	59	79	69	66	75	0.00	0.1		
26-Mar-18	56	53	61	66	64	71	0.00	0.07		
27-Mar-18	63	53	77	68	62	76	0.00	0.11		
28-Mar-18	67	56	79	71	63	82	0.00	0.13		
29-Mar-18	69	56	78	71	65	77	0.00	0.11		
30-Mar-18	64	58	71	69	64	72	1.58	0.08		
31-Mar-18	60	49	72	67	59	77	0.00	0.12		
<b>High</b>			<b>83</b>			<b>82</b>				
<b>Low</b>		<b>31</b>			<b>48</b>					
<b>Average</b>	<b>59</b>	<b>47</b>	<b>70</b>	<b>65</b>	<b>58</b>	<b>73</b>				
Days over 95 <sup>o</sup>				0			<b>Total for Month</b>		<b>5.38</b>	2.92
Days below 32 <sup>o</sup>				1			<b>Number of Rain Days</b>		6.00	
							<b>Historic Average</b>		5.41	
							<b>Deviation from Average</b>		-0.03	
							<b>Net Gain/loss (Rain - ET)</b>			<b>2.46</b>

Year Cumulative	
Rain	ET
20.1	6.6
23.0	
15.5	
4.7	
	13.6

## March Marianna FAWN 6' Air Temps



## March Avg Soil Temps Marianna



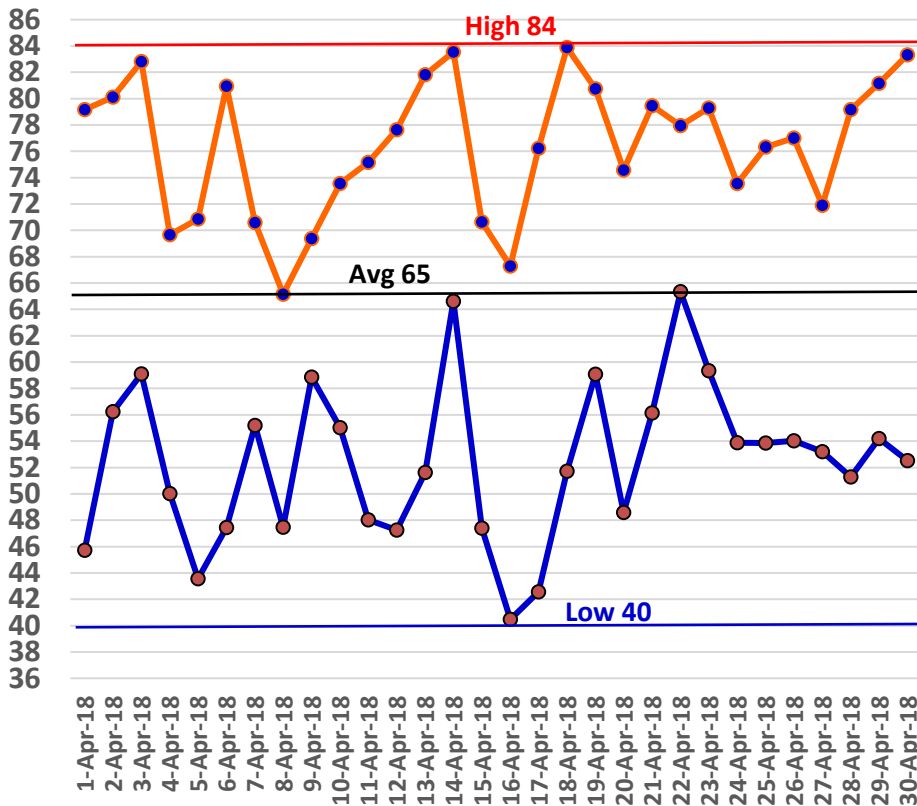


## April Daily Weather Data

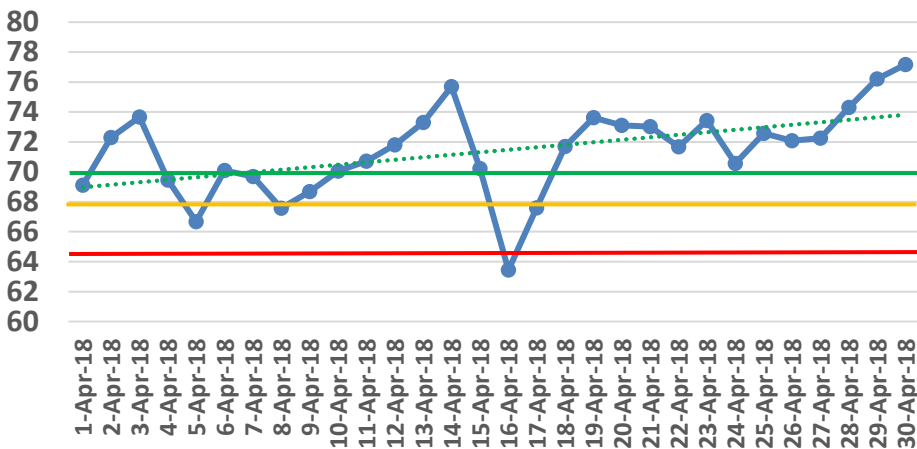
Date	Temperature						Precipitation	
	Air Temp 6 ft			Soil Temp 4 inch			Rain	Evapo Trans
	Avg	Min	Max	Avg	Min	Max	Inches	Inches
1-Apr-18	64	46	79	69	59	81	0.00	0.13
2-Apr-18	67	56	80	72	65	82	0.00	0.12
3-Apr-18	70	59	83	74	68	83	0.00	0.13
4-Apr-18	63	50	70	69	62	72	0.29	0.08
5-Apr-18	57	44	71	67	57	78	0.00	0.12
6-Apr-18	65	47	81	70	61	82	0.00	0.13
7-Apr-18	65	55	71	70	66	72	0.62	0.07
8-Apr-18	57	47	65	68	61	76	0.00	0.1
9-Apr-18	64	59	69	69	66	72	0.00	0.07
10-Apr-18	63	55	74	70	65	79	0.00	0.12
11-Apr-18	62	48	75	71	62	82	0.00	0.14
12-Apr-18	63	47	78	72	62	83	0.00	0.14
13-Apr-18	68	52	82	73	65	83	0.00	0.14
14-Apr-18	73	65	84	76	69	84	0.00	0.15
15-Apr-18	62	47	71	70	62	74	1.40	0.1
16-Apr-18	53	40	67	63	56	72	0.00	0.13
17-Apr-18	60	43	76	68	57	80	0.00	0.14
18-Apr-18	68	52	84	72	62	83	0.00	0.16
19-Apr-18	70	59	81	74	68	82	0.00	0.14
20-Apr-18	62	49	75	73	64	85	0.00	0.14
21-Apr-18	67	56	79	73	67	81	0.00	0.13
22-Apr-18	70	65	78	72	70	76	1.39	0.08
23-Apr-18	70	59	79	73	68	81	0.02	0.15
24-Apr-18	64	54	74	71	65	77	0.00	0.12
25-Apr-18	65	54	76	73	64	83	0.00	0.15
26-Apr-18	66	54	77	72	66	78	0.00	0.12
27-Apr-18	62	53	72	72	65	81	0.00	0.13
28-Apr-18	66	51	79	74	65	86	0.00	0.15
29-Apr-18	68	54	81	76	67	88	0.00	0.16
30-Apr-18	70	53	83	77	67	89	0.00	0.16
<b>High</b>			<b>84</b>			<b>89</b>		
<b>Low</b>		<b>40</b>			<b>56</b>			
<b>Average</b>	<b>65</b>	<b>52</b>	<b>76</b>	<b>71</b>	<b>64</b>	<b>80</b>		
Days over 95 <sup>o</sup>	0			<b>Total for Month</b>			<b>3.72</b>	3.80
				<b>Number of Rain Days</b>			5.00	
Days below 32 <sup>o</sup>	0			<b>Historic Average</b>			4.32	
				<b>Deviation from Average</b>			-0.60	
				<b>Net Gain/loss (Rain - ET)</b>				<b>-0.08</b>

<b>Year Cumulative</b>	
<b>Rain</b>	<b>ET</b>
23.9	10.4
28.0	
19.8	
4.1	
	13.5

## April Marianna FAWN 6' Air Temps



## April 2018 Avg Soil Temps Marianna

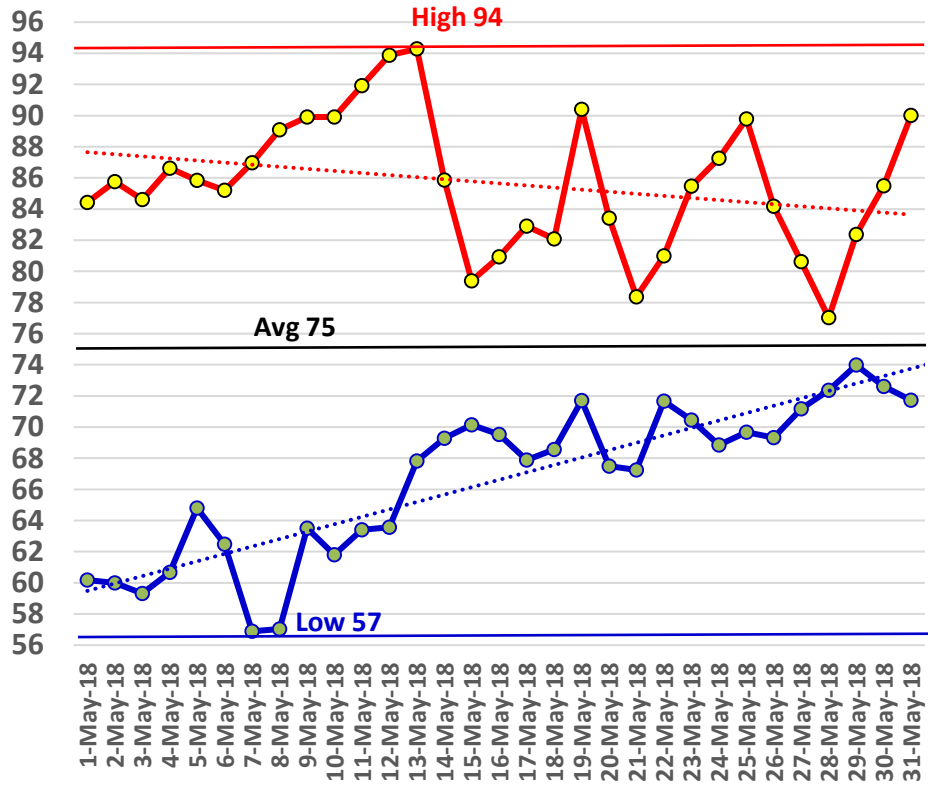


# May Daily Weather Data

Temperature							Precipitation			
Date	Air Temp 6 ft			Soil Temp 4 inch			Rain	Evapo Trans		
	Avg	Min	Max	Avg	Min	Max	Inches	Inches		
1-May-18	72	60	84	80	71	91	0.00	0.17		
2-May-18	72	60	86	81	71	93	0.00	0.17		
3-May-18	73	59	85	82	72	93	0.00	0.17		
4-May-18	74	61	87	83	73	94	0.00	0.17		
5-May-18	75	65	86	84	76	93	0.00	0.16		
6-May-18	74	62	85	84	76	94	0.00	0.18		
7-May-18	72	57	87	83	74	93	0.00	0.16		
8-May-18	75	57	89	84	74	95	0.00	0.17		
9-May-18	77	64	90	86	77	97	0.00	0.18		
10-May-18	76	62	90	86	77	98	0.00	0.18		
11-May-18	78	63	92	87	78	98	0.00	0.18		
12-May-18	80	64	94	88	79	100	0.00	0.18		
13-May-18	80	68	94	89	81	99	0.00	0.17		
14-May-18	77	69	86	86	82	91	0.00	0.11		
15-May-18	74	70	79	83	80	86	0.00	0.09		
16-May-18	74	70	81	81	77	87	1.33	0.1		
17-May-18	73	68	83	80	76	87	0.20	0.12		
18-May-18	75	69	82	78	75	84	0.01	0.12		
19-May-18	79	72	90	83	75	93	0.61	0.19		
20-May-18	74	68	83	80	75	87	0.19	0.11		
21-May-18	72	67	78	77	74	81	0.31	0.08		
22-May-18	75	72	81	79	75	84	0.03	0.12		
23-May-18	75	70	85	81	75	90	0.00	0.16		
24-May-18	76	69	87	83	76	93	0.01	0.17		
25-May-18	79	70	90	86	77	97	0.01	0.19		
26-May-18	75	69	84	83	79	91	0.86	0.12		
27-May-18	74	71	81	80	77	84	0.16	0.1		
28-May-18	75	72	77	78	76	80	1.05	0.07		
29-May-18	77	74	82	78	76	83	0.12	0.12		
30-May-18	78	73	86	81	76	88	0.17	0.15		
31-May-18	78	72	90	83	77	94	0.00	0.18		
<b>High</b>			<b>94</b>			<b>100</b>				
<b>Low</b>		<b>57</b>			<b>71</b>					
<b>Average</b>	<b>75</b>	<b>67</b>	<b>86</b>	<b>82</b>	<b>76</b>	<b>91</b>				
Days over 95 <sup>o</sup> Days of 100 <sup>o</sup> Days below 32 <sup>o</sup>				<b>Total for Month</b>			<b>5.06</b>	4.54	28.9	14.9
				<b>Number of Rain Days</b>			14.00		42.0	
				<b>Historic Average</b>			3.54		23.3	
				<b>Deviation from Average</b>			1.52		5.6	
				<b>Net Gain/loss (Rain - ET)</b>				<b>0.52</b>		14.0

Year Cumulative  
Rain      ET  
28.9      14.9  
42.0  
23.3  
5.6  
14.0

# May Marianna FAWN 6' Air Temps



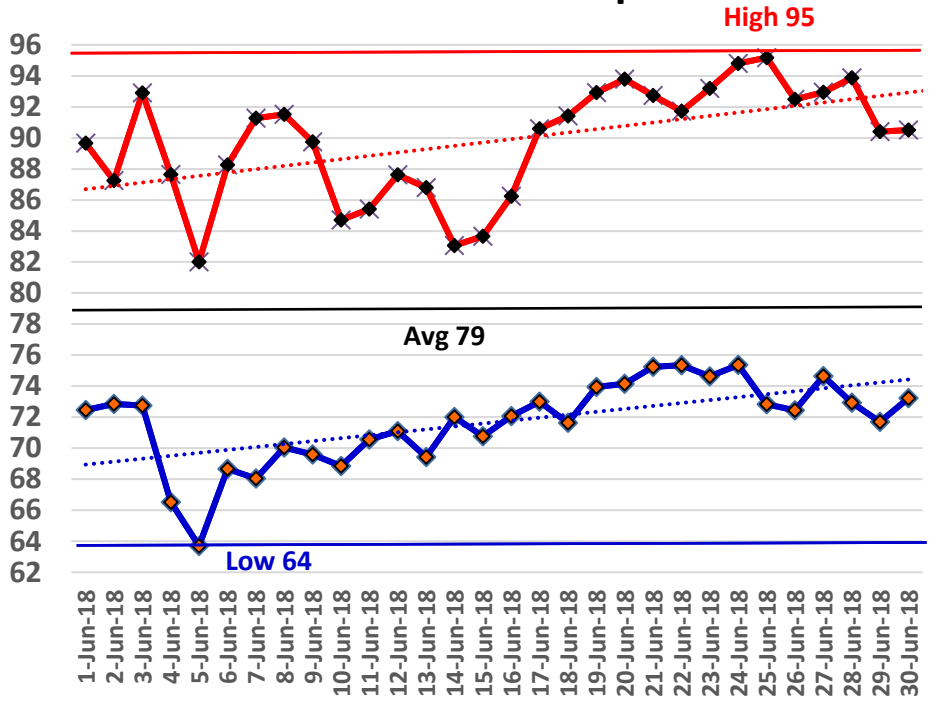
## June Daily Weather Data

Date	Temperature						Precipitation			
	Air Temp 6 ft			Soil Temp 4 inch			Rain	Evapo Trans		
	Avg	Min	Max	Avg	Min	Max	Inches	Inches		
1-Jun-18	80	72	90	86	78	97	0.00	0.19		
2-Jun-18	78	73	87	83	79	90	0.32	0.12		
3-Jun-18	79	73	93	83	78	93	0.36	0.17		
4-Jun-18	79	67	88	83	69	91	0.03	0.19		
5-Jun-18	73	64	82	80	75	85	0.00	0.13		
6-Jun-18	78	69	88	84	76	95	0.00	0.17		
7-Jun-18	80	68	91	87	77	98	0.00	0.19		
8-Jun-18	80	70	92	89	80	101	0.00	0.19		
9-Jun-18	77	70	90	87	81	99	1.62	0.16		
10-Jun-18	73	69	85	80	77	88	1.05	0.1		
11-Jun-18	77	71	85	81	76	88	0.00	0.14		
12-Jun-18	77	71	88	84	78	93	0.00	0.18		
13-Jun-18	76	69	87	83	78	92	0.03	0.15		
14-Jun-18	75	72	83	81	78	88	0.01	0.11		
15-Jun-18	76	71	84	80	77	85	1.08	0.11		
16-Jun-18	77	72	86	81	76	89	0.03	0.12		
17-Jun-18	80	73	91	83	77	93	0.00	0.15		
18-Jun-18	82	72	91	87	78	97	0.00	0.19		
19-Jun-18	84	74	93	90	81	102	0.00	0.2		
20-Jun-18	84	74	94	92	83	103	0.00	0.2		
21-Jun-18	83	75	93	93	84	104	0.00	0.2		
22-Jun-18	82	75	92	88	84	95	0.31	0.18		
23-Jun-18	83	75	93	90	81	101	0.00	0.2		
24-Jun-18	84	75	95	92	83	103	0.00	0.19		
25-Jun-18	82	73	95	92	84	103	0.28	0.18		
26-Jun-18	81	72	92	90	81	102	0.00	0.2		
27-Jun-18	82	75	93	91	83	102	0.00	0.18		
28-Jun-18	82	73	94	91	84	102	0.13	0.18		
29-Jun-18	80	72	90	90	82	102	0.01	0.18		
30-Jun-18	78	73	91	88	82	101	2.71	0.13		
<b>High</b>			<b>95</b>			<b>104</b>				
<b>Low</b>		<b>64</b>			<b>69</b>					
<b>Average</b>	<b>79</b>	<b>72</b>	<b>90</b>	<b>86</b>	<b>79</b>	<b>96</b>				
Days over 95 <sup>o</sup>			1	<b>Total for Month</b>			<b>7.97</b>	4.98	36.9	19.9
Days of 100 <sup>o</sup>			0	<b>Number of Rain Days</b>			14.00		56.0	
Days below 32 <sup>o</sup>	0			<b>Historic Average</b>			4.97		28.3	
				<b>Deviation from Average</b>			3.00		8.6	
				<b>Net Gain/loss (Rain - ET)</b>				<b>2.99</b>		17.0

Year Cumulative

<b>Rain</b>	<b>ET</b>
36.9	19.9
56.0	
28.3	
8.6	
	17.0

# June Marianna FAWN 6' Air Temps



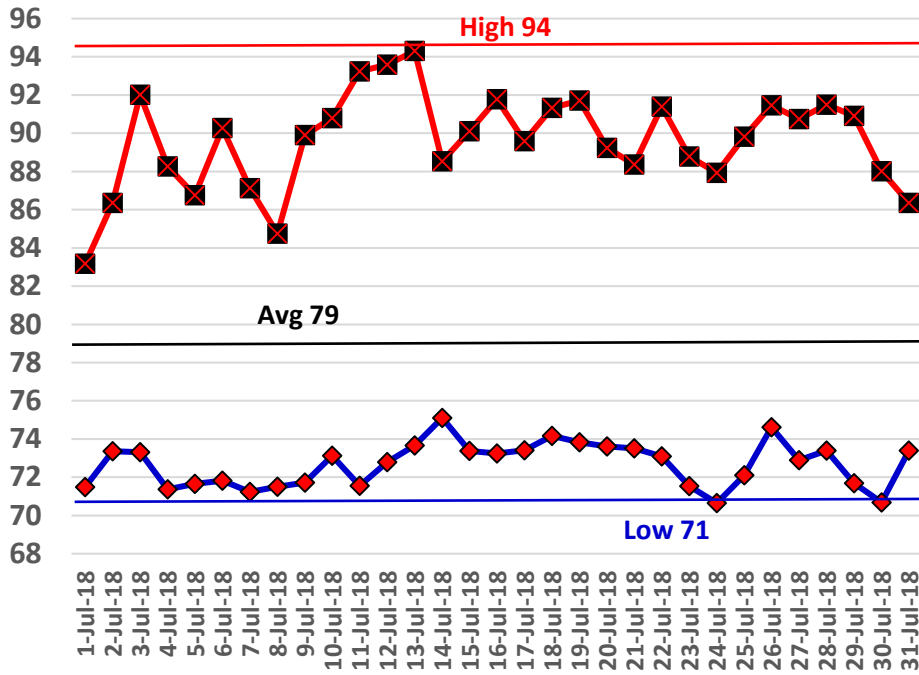
## July Daily Weather Data

Date	Temperature						Precipitation	
	Air Temp 6 ft			Soil Temp 4 inch			Rain	Evapo Trans
	Avg	Min	Max	Avg	Min	Max	Inches	Inches
1-Jul-18	76	71	83	83	79	90	0.01	0.11
2-Jul-18	79	73	86	84	79	92	0.00	0.14
3-Jul-18	81	73	92	87	79	99	0.00	0.19
4-Jul-18	79	71	88	88	81	98	0.00	0.16
5-Jul-18	79	72	87	87	81	95	0.13	0.17
6-Jul-18	80	72	90	88	80	100	0.01	0.18
7-Jul-18	78	71	87	88	81	96	0.00	0.16
8-Jul-18	77	72	85	88	82	96	0.00	0.14
9-Jul-18	80	72	90	91	82	102	0.00	0.19
10-Jul-18	81	73	91	90	84	100	0.20	0.17
11-Jul-18	83	72	93	91	81	102	0.00	0.20
12-Jul-18	83	73	94	93	83	106	0.00	0.20
13-Jul-18	84	74	94	94	85	104	0.00	0.19
14-Jul-18	80	75	89	91	87	95	0.00	0.11
15-Jul-18	78	73	90	88	83	101	0.77	N/A
16-Jul-18	78	73	92	85	80	95	0.42	0.15
17-Jul-18	80	73	90	86	80	94	0.08	0.17
18-Jul-18	80	74	91	87	81	96	0.00	0.16
19-Jul-18	79	74	92	87	81	101	0.21	0.16
20-Jul-18	80	74	89	87	81	95	0.01	0.16
21-Jul-18	81	74	88	86	81	92	0.00	0.12
22-Jul-18	81	73	91	86	81	94	0.46	0.15
23-Jul-18	80	72	89	87	79	98	0.00	0.18
24-Jul-18	78	71	88	88	80	100	0.64	0.16
25-Jul-18	79	72	90	86	80	97	0.10	0.16
26-Jul-18	81	75	91	88	81	98	0.00	0.17
27-Jul-18	78	73	91	86	82	100	1.15	0.14
28-Jul-18	79	73	91	86	80	98	0.30	0.17
29-Jul-18	78	72	91	85	79	96	0.95	0.15
30-Jul-18	77	71	88	83	78	93	0.02	0.13
31-Jul-18	77	73	86	84	79	91	0.53	0.13
<b>High</b>			<b>94</b>			<b>106</b>		
<b>Low</b>		<b>71</b>			<b>78</b>			
<b>Average</b>	<b>79</b>	<b>73</b>	<b>90</b>	<b>87</b>	<b>81</b>	<b>97</b>		
				<b>Total for Month</b>		<b>5.99</b>	<b>4.77</b>	
Days over 95 <sup>o</sup>								42.9
Days of 100 <sup>o</sup>								24.7
Days below 32 <sup>o</sup>								73.0
				<b>Number of Rain Days</b>		<b>17.00</b>		34.4
				<b>Historic Average</b>		<b>6.15</b>		8.5
				<b>Deviation from Average</b>		<b>-0.16</b>		
				<b>Net Gain/loss (Rain - ET)</b>			<b>1.22</b>	18.2

Year Cumulative

Rain	ET
42.9	24.7
73.0	
34.4	
8.5	
	18.2

# July Marianna FAWN 6' Air Temps





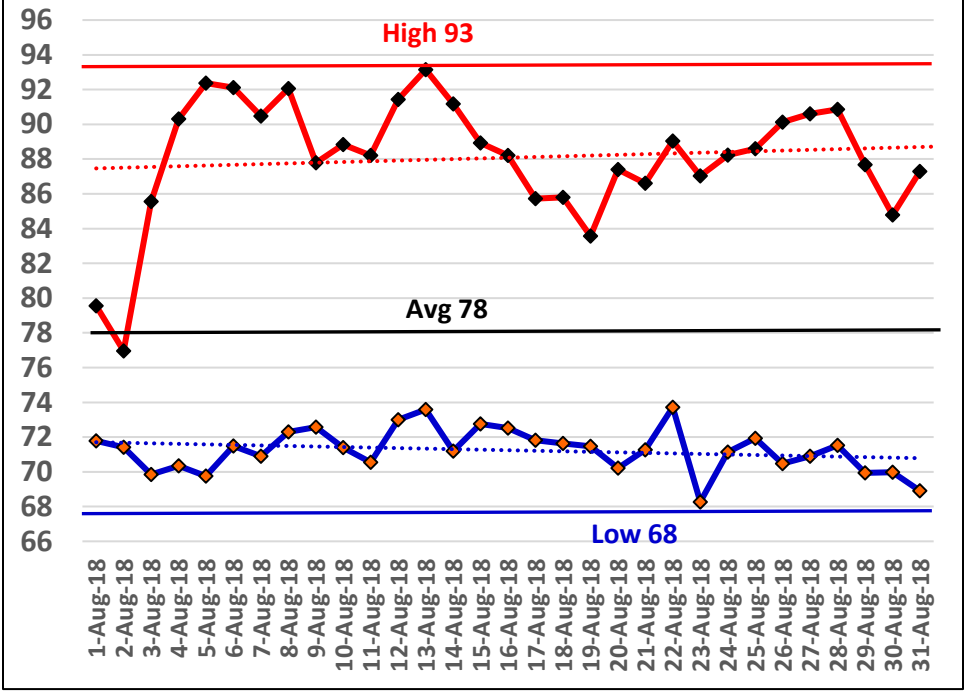
## August Daily Weather Data

Temperature							Precipitation	
Date	Air Temp 6 ft			Soil Temp 4 inch			Rain	Evapo Trans
	Avg	Min	Max	Avg	Min	Max	Inches	Inches
1-Aug-18	74	72	80	80	77	84	0.61	0.08
2-Aug-18	74	71	77	78	76	82	0.88	0.07
3-Aug-18	76	70	86	82	76	92	0.01	0.14
4-Aug-18	76	70	90	83	77	95	0.00	0.14
5-Aug-18	81	70	92	87	77	99	0.00	0.17
6-Aug-18	80	71	92	87	80	99	0.13	0.15
7-Aug-18	80	71	90	88	78	101	0.00	0.18
8-Aug-18	80	72	92	89	82	103	0.15	0.17
9-Aug-18	78	73	88	84	80	91	0.49	0.13
10-Aug-18	78	71	89	83	78	91	0.68	0.14
11-Aug-18	79	71	88	84	78	92	0.01	0.16
12-Aug-18	82	73	91	87	79	97	0.00	0.18
13-Aug-18	81	74	93	88	81	101	0.06	0.17
14-Aug-18	79	71	91	88	80	98	0.00	0.16
15-Aug-18	78	73	89	86	82	98	0.06	0.13
16-Aug-18	76	73	88	84	80	93	0.08	0.11
17-Aug-18	76	72	86	82	79	88	0.07	0.09
18-Aug-18	78	72	86	82	78	87	0.22	0.12
19-Aug-18	76	71	84	81	78	85	0.68	0.09
20-Aug-18	77	70	87	82	77	90	0.15	0.13
21-Aug-18	78	71	87	82	77	88	0.01	0.12
22-Aug-18	80	74	89	85	79	93	0.00	0.17
23-Aug-18	77	68	87	85	78	95	0.00	0.16
24-Aug-18	79	71	88	86	80	95	0.00	0.14
25-Aug-18	79	72	89	87	81	96	0.00	0.14
26-Aug-18	80	70	90	88	81	98	0.00	0.16
27-Aug-18	78	71	91	87	82	98	0.67	0.14
28-Aug-18	77	72	91	85	80	94	0.17	0.14
29-Aug-18	76	70	88	84	79	92	0.01	0.14
30-Aug-18	74	70	85	82	79	90	0.09	0.11
31-Aug-18	75	69	87	81	77	89	0.44	0.13
<b>High</b>			<b>93</b>			<b>103</b>		
<b>Low</b>		<b>68</b>			<b>76</b>			
<b>Average</b>	<b>78</b>	<b>71</b>	<b>88</b>	<b>85</b>	<b>79</b>	<b>93</b>		
Days over 95 <sup>o</sup> Days of 100 <sup>o</sup> Days below 32 <sup>o</sup>				<b>Total for Month</b>			<b>5.67</b>	4.26
				<b>Number of Rain Days</b>			21.00	
				<b>Historic Average</b>			5.27	
				<b>Deviation from Average</b>			0.40	
				<b>Net Gain/loss (Rain - ET)</b>				<b>1.41</b>

**Year Cumulative**

<b>Rain</b>	<b>ET</b>
48.6	28.9
94.0	
39.7	
8.9	
	19.6

## August Marianna FAWN 6' Air Temps



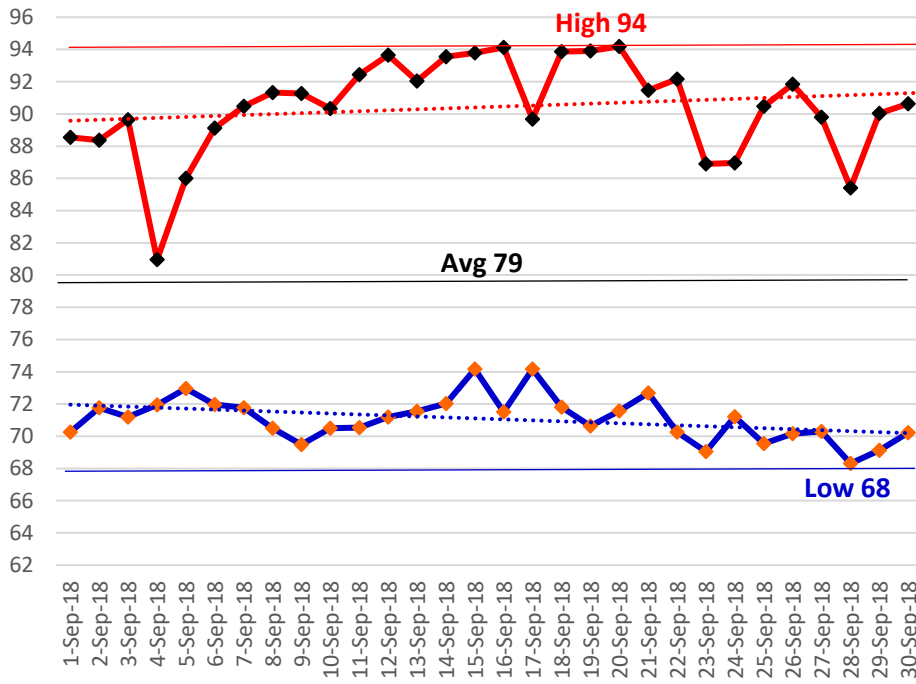
Summer Rain Days - 52 of 92 days

# September Daily Weather Data

Date	Temperature						Precipitation			
	Air Temp 6 ft			Soil Temp 4 inch			Rain	Evapo Trans		
	Avg	Min	Max	Avg	Min	Max	Inches	Inches		
1-Sep-18	78	70	89	83	76	91	0.01	0.15		
2-Sep-18	78	72	88	84	78	92	0.26	0.16		
3-Sep-18	76	71	90	82	78	90	0.24	0.12		
4-Sep-18	76	72	81	79	78	82	0.00	0.06		
5-Sep-18	78	73	86	81	77	87	0.01	0.1		
6-Sep-18	80	72	89	84	78	92	0.01	0.15		
7-Sep-18	80	72	90	86	79	95	0.00	0.16		
8-Sep-18	79	71	91	87	80	97	0.00	0.16		
9-Sep-18	79	69	91	87	81	95	0.00	0.14		
10-Sep-18	79	71	90	87	81	96	0.00	0.14		
11-Sep-18	80	71	92	89	82	99	0.00	0.16		
12-Sep-18	79	71	94	88	83	99	0.20	0.14		
13-Sep-18	80	72	92	87	80	96	0.00	0.15		
14-Sep-18	82	72	94	88	81	97	0.00	0.15		
15-Sep-18	83	74	94	90	83	99	0.00	0.16		
16-Sep-18	83	72	94	90	83	99	0.00	0.16		
17-Sep-18	80	74	90	86	83	92	0.36	0.11		
18-Sep-18	78	72	94	86	80	95	0.00	0.14		
19-Sep-18	80	71	94	87	80	97	0.00	0.15		
20-Sep-18	81	72	94	88	82	97	0.00	0.15		
21-Sep-18	80	73	91	88	83	96	0.00	0.14		
22-Sep-18	80	70	92	88	82	98	0.00	0.15		
23-Sep-18	76	69	87	85	81	90	0.35	0.11		
24-Sep-18	77	71	87	83	79	89	0.00	0.11		
25-Sep-18	76	70	90	82	78	91	0.13	0.11		
26-Sep-18	78	70	92	83	77	93	0.80	0.14		
27-Sep-18	77	70	90	82	78	90	0.05	0.12		
28-Sep-18	75	68	85	81	77	86	0.15	0.09		
29-Sep-18	79	69	90	83	76	91	0.00	0.13		
30-Sep-18	76	70	91	82	78	90	0.10	0.11		
<b>High</b>			<b>94</b>			<b>99</b>				
<b>Low</b>		<b>68</b>			<b>76</b>					
<b>Average</b>	<b>79</b>	<b>71</b>	<b>90</b>	<b>85</b>	<b>80</b>	<b>93</b>				
Days over 95 <sup>o</sup>			0	<b>Total for Month</b>			<b>2.67</b>	4.02	51.2	32.9
Days of 100 <sup>o</sup>			0	<b>Number of Rain Days</b>			13.00		107.0	
Days below 32 <sup>o</sup>			0	<b>Historic Average</b>			4.37		44.1	
Days of 90+			22	<b>Deviation from Average</b>			-1.70		7.2	
				<b>Net Gain/loss (Rain - ET)</b>				<b>-1.35</b>		18.3

<b>Year Cumulative</b>	
<b>Rain</b>	<b>ET</b>
51.2	32.9
107.0	
44.1	
7.2	
	18.3

# September Marianna FAWN 6' Air Temps

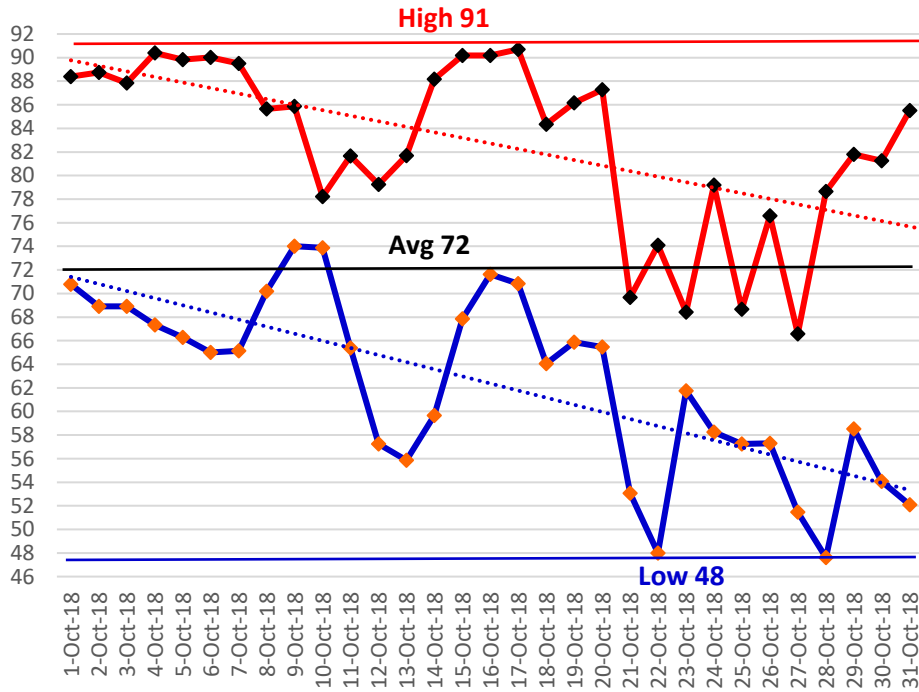


# October Daily Weather Data

Date	Temperature						Precipitation			
	Air Temp 6 ft			Soil Temp 4 inch			Rain	Evapo Trans		
	Avg	Min	Max	Avg	Min	Max	Inches	Inches		
1-Oct-18	77	71	88	83	77	90	0.00	0.13		
2-Oct-18	77	69	89	83	77	91	0.00	0.13		
3-Oct-18	77	69	88	83	78	90	0.00	0.12		
4-Oct-18	77	67	90	83	77	92	0.00	0.12		
5-Oct-18	77	66	90	84	77	92	0.00	0.13		
6-Oct-18	76	65	90	84	78	92	0.00	0.12		
7-Oct-18	77	65	90	83	77	91	0.00	0.12		
8-Oct-18	78	70	86	82	79	87	0.00	0.09		
9-Oct-18	78	74	86	82	79	85	0.00	0.09		
10-Oct-18	76	74	78	78	76	81	5.15	N/A		
11-Oct-18	75	65	82	77	73	82	0.00	N/A		
12-Oct-18	67	57	79	74	69	80	0.00	N/A		
13-Oct-18	69	56	82	74	68	82	0.00	N/A		
14-Oct-18	74	60	88	76	70	84	0.00	N/A		
15-Oct-18	78	68	90	78	74	84	0.02	N/A		
16-Oct-18	80	72	90	81	76	86	0.01	N/A		
17-Oct-18	80	71	91	82	78	89	0.00	N/A		
18-Oct-18	73	64	84	79	75	85	0.00	N/A		
19-Oct-18	75	66	86	80	75	87	0.13	N/A		
20-Oct-18	75	65	87	79	76	85	0.00	N/A		
21-Oct-18	62	53	70	74	70	80	0.00	N/A		
22-Oct-18	62	48	74	72	66	78	0.00	N/A		
23-Oct-18	65	62	68	71	69	73	0.05	0.05		
24-Oct-18	67	58	79	72	67	80	0.09	0.09		
25-Oct-18	63	57	69	69	68	71	0.19	0.06		
26-Oct-18	68	57	77	71	66	76	0.02	0.08		
27-Oct-18	59	51	67	67	64	71	0.00	0.07		
28-Oct-18	64	48	79	68	61	75	0.00	0.08		
29-Oct-18	70	59	82	71	67	79	0.00	0.09		
30-Oct-18	66	54	81	71	65	78	0.00	0.08		
31-Oct-18	69	52	86	72	65	79	0.00	0.09		
<b>High</b>			<b>91</b>			<b>92</b>				
<b>Low</b>		<b>48</b>			<b>61</b>					
<b>Average</b>	<b>72</b>	62	83	<b>77</b>	72	83				
Days over 95 <sup>0</sup>	0			<b>Total for Month</b>			<b>5.66</b>	1.74	56.9	34.7
				<b>Number of Rain Days</b>			8.00		115.0	
Days below 32 <sup>0</sup>	0			<b>Historic Average</b>			2.73		46.8	
				<b>Deviation from Average</b>			2.93		10.1	
				<b>Net Gain/loss (Rain - ET)</b>				<b>3.92</b>		22.2

<b>Year Cumulative</b>	
<b>Rain</b>	<b>ET</b>
56.9	34.7
115.0	
46.8	
10.1	
	22.2

# October 2018 Marianna FAWN 6' Air Temps

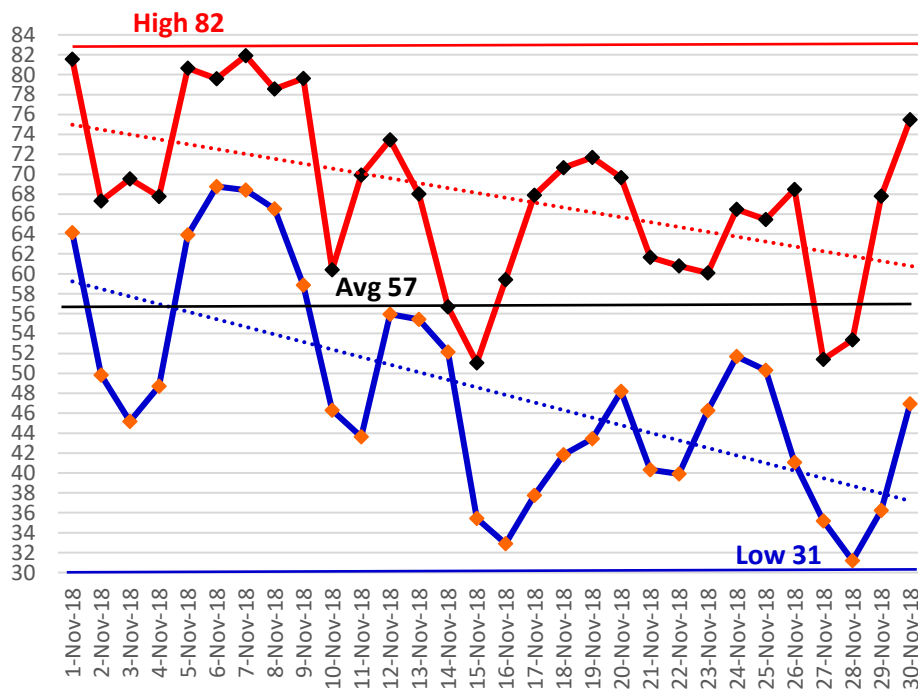


# November Daily Weather Data

Date	Temperature						Precipitation				
	Air Temp 6 ft			Soil Temp 4 inch			Rain	Evapo Trans			
	Avg	Min	Max	Avg	Min	Max	Inches	Inches			
1-Nov-18	69	64	82	71	70	74	0.42	0.07			
2-Nov-18	61	50	67	67	62	70	0.93	0.06			
3-Nov-18	57	45	70	64	59	71	0.00	0.07			
4-Nov-18	60	49	68	64	60	68	0.00	0.06			
5-Nov-18	70	64	81	69	66	74	0.25	0.07			
6-Nov-18	73	69	80	72	70	75	0.76	0.05			
7-Nov-18	72	68	82	73	70	77	2.21	0.06			
8-Nov-18	72	67	79	73	70	76	0.02	0.06			
9-Nov-18	70	59	80	72	69	76	0.09	0.07			
10-Nov-18	53	46	60	65	60	69	0.00	0.06			
11-Nov-18	57	44	70	63	58	69	0.00	0.06			
12-Nov-18	64	56	73	65	63	68	1.06	0.06			
13-Nov-18	61	55	68	66	63	68	0.13	0.05			
14-Nov-18	55	52	57	62	60	63	0.47	0.04			
15-Nov-18	41	35	51	55	50	60	0.09	0.04			
16-Nov-18	44	33	59	53	48	60	0.00	0.05			
17-Nov-18	52	38	68	56	50	64	0.00	0.05			
18-Nov-18	55	42	71	59	53	66	0.00	0.06			
19-Nov-18	57	43	72	60	54	66	0.00	0.06			
20-Nov-18	59	48	70	61	58	66	0.00	0.06			
21-Nov-18	49	40	62	57	54	62	0.00	0.05			
22-Nov-18	50	40	61	55	52	59	0.00	0.05			
23-Nov-18	54	46	60	56	53	59	0.00	0.05			
24-Nov-18	58	52	66	60	58	65	0.20	0.05			
25-Nov-18	57	50	65	60	57	64	0.29	0.05			
26-Nov-18	54	41	68	59	53	63	0.01	0.06			
27-Nov-18	42	35	51	51	48	56	0.00	0.04			
28-Nov-18	42	31	53	50	45	55	0.00	0.04			
29-Nov-18	51	36	68	53	47	61	0.00	0.05			
30-Nov-18	61	47	75	58	53	64	0.01	0.06			
<b>High</b>			<b>82</b>			<b>77</b>					
<b>Low</b>		<b>31</b>			<b>45</b>						
<b>Average</b>	<b>57</b>	<b>48</b>	<b>68</b>	<b>62</b>	<b>58</b>	<b>66</b>					
Days over 95 <sup>o</sup>	0			<b>Total for Month</b>			<b>6.94</b>	1.66	63.8	36.3	
				<b>Historic Average</b>			15.00			130.0	
Days below 32 <sup>o</sup>	1			<b>59 year Average</b>			3.41			50.2	
				<b>Deviation from Average</b>			3.53			13.6	
				<b>Net Gain/loss (Rain - ET)</b>						<b>5.28</b>	

<b>Year Cumulative</b>	
<b>Rain</b>	<b>ET</b>
63.8	36.3
130.0	
50.2	
13.6	
	27.5

# November 2018 Marianna FAWN 6' Air Temps





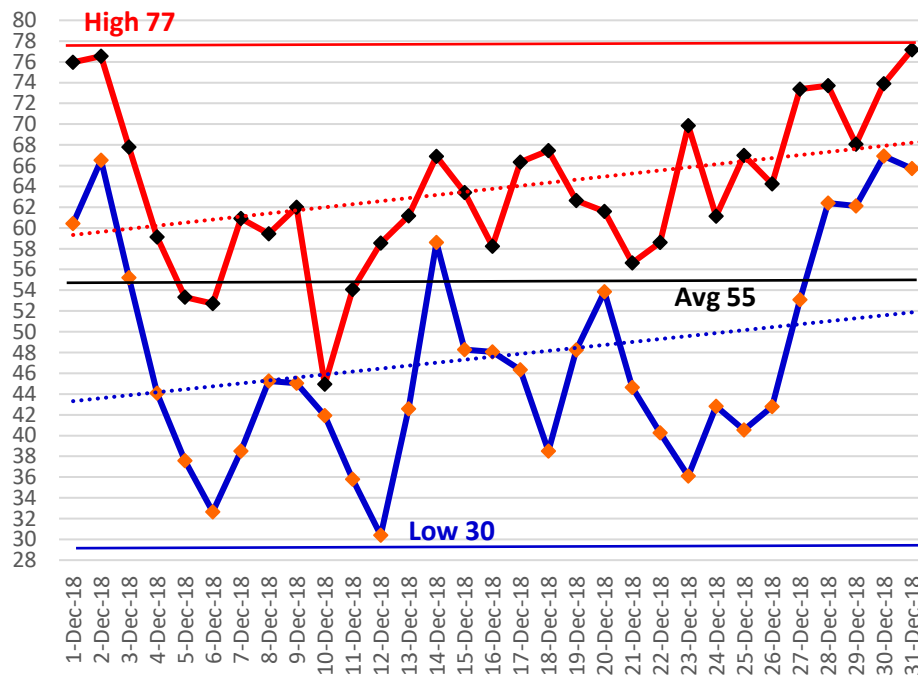
## December Daily Weather Data

Date	Temperature						Precipitation		
	Air Temp 6 ft			Soil Temp 4 inch			Rain	Evapo Trans	
	Avg	Min	Max	Avg	Min	Max	Inches	Inches	
1-Dec-18	66	60	76	63	60	67	3.71	0.06	
2-Dec-18	72	67	77	69	67	71	1.26	0.05	
3-Dec-18	62	55	68	65	60	68	0.23	0.05	
4-Dec-18	51	44	59	58	53	63	0.00	0.04	
5-Dec-18	44	38	53	52	49	58	0.00	0.04	
6-Dec-18	42	33	53	51	46	58	0.00	0.03	
7-Dec-18	48	39	61	53	48	60	0.00	0.04	
8-Dec-18	53	45	59	54	51	57	0.50	0.05	
9-Dec-18	54	45	62	57	52	58	0.60	0.05	
10-Dec-18	43	42	45	50	49	52	0.00	0.03	
11-Dec-18	45	36	54	51	48	57	0.00	0.04	
12-Dec-18	44	30	59	50	44	57	0.03	0.04	
13-Dec-18	53	43	61	52	48	55	0.13	0.05	
14-Dec-18	63	59	67	59	55	62	1.25	0.05	
15-Dec-18	56	48	63	58	55	62	0.09	0.04	
16-Dec-18	52	48	58	55	53	59	0.00	0.04	
17-Dec-18	54	46	66	55	51	62	0.00	0.04	
18-Dec-18	52	39	67	55	49	62	0.00	0.04	
19-Dec-18	55	48	63	55	53	58	0.00	0.05	
20-Dec-18	58	54	62	57	56	59	1.95	0.04	
21-Dec-18	48	45	57	53	49	58	0.26	0.05	
22-Dec-18	47	40	59	52	47	59	0.00	0.04	
23-Dec-18	53	36	70	53	46	60	0.00	0.05	
24-Dec-18	52	43	61	55	51	61	0.00	0.04	
25-Dec-18	51	41	67	54	48	61	0.00	0.05	
26-Dec-18	54	43	64	53	49	58	0.00	0.05	
27-Dec-18	63	53	73	58	53	62	0.00	0.06	
28-Dec-18	67	62	74	63	61	66	1.71	0.05	
29-Dec-18	65	62	68	64	62	66	0.12	0.04	
30-Dec-18	69	67	74	66	64	69	0.02	0.05	
31-Dec-18	70	66	77	67	65	70	0.00	0.06	
<b>High</b>			<b>77</b>			<b>71</b>			
<b>Low</b>		<b>30</b>			<b>44</b>				
<b>Average</b>	<b>55</b>	<b>48</b>	<b>64</b>	<b>57</b>	<b>53</b>	<b>61</b>			
Days over 95 <sup>o</sup>				0			<b>Total for Month</b>	<b>11.86</b>	1.41
Days below 32 <sup>o</sup>				1			<b>Number of Rain Days</b>	14.00	75.7
<b>Total days in 2015</b>							<b>Historic Average</b>	4.39	144.0
<b>&lt;32<sup>o</sup> or &gt;95<sup>o</sup></b>				<b>20 1</b>			<b>Deviation from Average</b>	7.47	54.6
<b>Net Gain/loss (Rain - ET)</b>								<b>10.45</b>	21.1
									<b>37.9</b>

Year Cumulative

<b>Rain</b>	<b>ET</b>
75.7	37.7
144.0	
54.6	
21.1	
	37.9

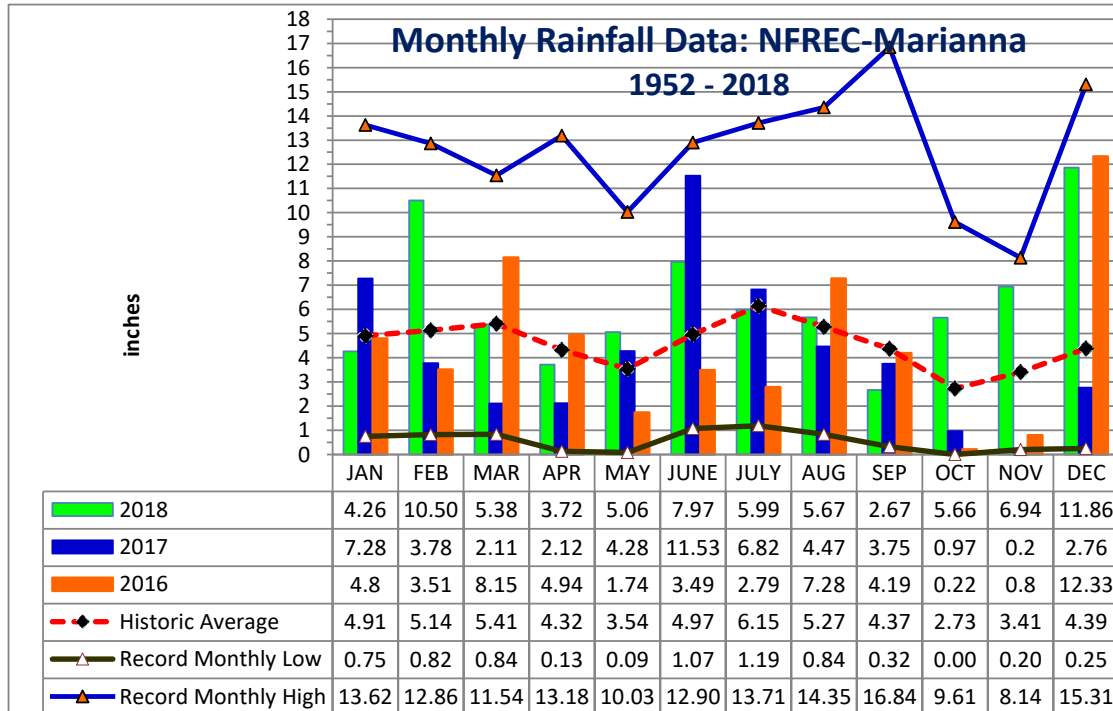
## December 2018 Marianna FAWN 6' Air Temps





YEAR	JAN	FEB	MAR	APR	MAY	JUNE	JULY	AUG	SEP	OCT	NOV	DEC	TOTAL
1952	1.14	8.88	4.48	2.11	5.13	1.12	5.95	8.81	3.09	0.65	3.26	3.42	48.04
1953	4.84	7.26	3.03	8.43	2.43	3.97	6.84	1.63	6.33	0.65	4.09	15.31	64.81
1954	1.33	3.49	2.62	2.58	1.96	3.46	3.28	2.84	1.72	1.30	2.66	1.44	28.68
1955	3.66	1.83	0.84	5.80	3.03	1.62	6.75	3.75	2.44	2.10	0.72	0.77	33.31
1956	3.59	5.18	3.77	2.04	4.03	5.45	8.52	4.09	6.44	5.08	0.28	3.34	51.81
1957	0.75	2.65	5.17	5.74	4.60	5.75	9.83	5.91	16.84	1.31	6.24	2.22	67.01
1958	4.48	3.61	4.73	7.22	5.57	6.00	8.39	3.45	3.68	1.88	1.75	2.32	53.08
1959	3.67	7.06	8.50	5.73	6.95	3.77	4.83	3.67	3.07	7.93	0.21	1.53	56.92
1960	3.36	7.08	3.41	6.80	3.20	4.75	4.97	4.80	6.22	2.00	0.47	2.35	49.41
1961	4.23	4.15	3.64	5.57	3.97	4.41	3.99	11.09	2.60	0.00	2.84	6.23	52.72
1962	1.72	2.80	8.13	3.28	2.86	3.67	7.97	6.07	3.07	2.82	5.16	1.67	49.22
1963	7.31	3.02	3.18	1.36	3.50	7.99	5.16	1.50	5.25	0.01	4.22	6.05	48.55
1964	10.80	6.81	6.41	9.47	2.23	5.68	9.22	3.07	7.47	9.61	3.35	6.44	80.56
1965	2.63	6.09	5.51	3.96	0.18	9.60	3.26	4.18	4.48	3.41	1.81	3.60	48.71
1966	5.56	9.84	2.57	0.77	5.80	3.13	3.25	9.82	5.09	1.41	2.03	4.62	53.89
1967	8.27	3.32	2.19	0.13	2.61	7.02	6.49	3.58	1.40	1.86	2.40	7.98	47.25
1968	1.28	2.30	3.40	2.50	3.39	1.18	5.45	4.61	2.99	1.41	5.11	5.34	38.96
1969	1.68	3.49	7.08	4.54	3.01	1.71	13.18	3.05	5.64	1.50	1.22	3.80	49.90
1970	4.16	9.20	8.86	1.83	1.81	3.69	5.04	8.01	0.49	4.40	2.21	3.13	52.83
1971	1.97	6.11	7.15	3.17	3.03	3.85	5.20	6.76	2.47	1.84	1.94	3.70	47.19
1972	3.62	6.03	6.41	0.38	2.87	8.89	3.78	5.39	2.14	2.44	3.29	3.77	49.01
1973	8.14	7.71	8.38	7.60	6.87	3.63	11.12	4.51	5.40	0.27	3.64	5.33	72.60
1974	5.24	5.80	2.66	3.40	3.78	1.56	3.29	8.01	4.68	0.84	2.14	2.89	44.29
1975	10.21	6.36	4.91	10.35	3.97	4.10	13.71	5.40	3.81	4.35	2.89	3.28	73.34
1976	6.99	1.50	4.89	1.87	8.89	3.08	3.03	3.47	5.47	6.18	5.72	3.97	55.06
1977	3.47	1.81	6.52	0.88	0.60	6.36	3.55	5.22	9.83	2.59	8.14	4.19	53.16
1978	7.28	3.28	7.25	4.65	6.73	3.79	7.25	4.90	0.98	0.20	6.01	3.65	55.97
1979	7.30	7.78	3.26	7.75	6.22	1.31	7.49	6.30	11.51	0.53	4.47	2.84	66.76
1980	6.58	2.96	11.54	9.29	4.50	3.50	5.87	2.53	4.56	4.71	1.52	0.25	57.81
1981	1.70	5.32	5.94	3.03	2.73	4.74	4.02	2.53	2.44	1.75	0.85	4.94	39.99
1982	4.17	5.61	2.91	5.93	5.39	3.00	7.51	4.42	6.00	2.65	2.34	9.14	59.07
1983	4.92	6.84	8.53	7.88	2.27	5.66	1.19	2.53	8.97	3.52	5.90	7.65	65.86
1984	5.49	5.01	8.62	6.29	2.50	5.31	12.01	5.76	0.32	1.60	1.63	0.80	55.34
1985	4.60	4.46	2.60	1.18	4.44	5.68	3.68	5.58	1.42	7.42	7.91	5.34	54.31
1986	5.68	10.27	3.21	0.83	2.26	1.85	2.75	4.12	2.35	2.22	4.40	5.68	45.62
1987	8.62	5.52	7.23	0.40	4.46	5.43	5.51	4.18	2.27	0.06	4.02	0.81	48.51
1988	5.57	6.40	8.41	2.69	0.28	1.07	5.43	3.98	5.53	1.98	3.28	1.23	45.85
1989	1.59	2.74	4.96	3.63	7.01	12.90	11.19	3.06	3.36	7.20	4.71	5.45	67.80
1990	5.26	4.57	4.55	3.00	3.22	4.02	3.65	2.91	0.85	1.34	0.93	3.42	37.72
1991	13.62	3.44	9.00	5.32	10.03	5.30	10.67	3.89	1.53	1.17	1.60	3.00	68.57
1992	8.37	6.29	7.92	2.50	1.41	11.16	8.69	6.72	3.19	2.08	7.40	2.93	68.66
1993	12.00	3.38	7.41	1.50	1.60	4.18	6.68	3.89	3.44	2.90	2.27	3.63	52.88
1994	8.64	2.53	6.25	4.34	1.82	11.41	10.95	9.08	6.44	7.62	2.53	3.79	75.40
1995	5.23	3.13	4.29	4.35	3.90	5.56	3.02	6.16	0.86	7.51	4.12	1.78	49.91
1996	3.64	5.99	8.47	5.76	1.50	5.43	2.83	14.28	5.32	3.81	2.01	3.65	62.69

YEAR	JAN	FEB	MAR	APR	MAY	JUNE	JULY	AUG	SEP	OCT	NOV	DEC	TOTAL
1997	6.68	5.29	2.63	10.08	5.91	6.41	5.73	4.65	3.78	2.10	6.85	8.44	68.55
1998	6.28	8.30	6.11	2.24	1.45	2.35	4.37	2.20	16.31	0.30	2.05	1.98	53.94
1999	6.95	2.90	3.61	1.50	6.71	8.99	8.64	4.02	4.33	3.13	3.56	2.50	56.84
2000	3.78	4.96	4.48	4.05	0.09	4.00	3.40	7.15	7.20	0.71	4.43	3.21	47.46
2001	2.16	0.82	10.00	1.99	2.52	8.24	4.66	8.21	1.90	1.51	1.70	0.78	44.49
2002	3.82	2.44	5.51	5.78	2.19	3.45	10.34	3.30	11.83	7.36	7.76	5.99	69.77
2003	2.30	7.03	8.18	4.89	3.11	6.11	7.84	5.99	2.39	3.58	3.04	3.12	57.58
2004	3.19	7.66	0.90	4.37	1.19	6.66	4.92	1.67	10.01	3.89	4.97	3.25	52.68
2005	3.33	2.31	9.05	7.04	1.67	7.47	9.44	11.71	1.62	0.03	3.15	4.81	61.63
2006	4.82	3.90	0.91	1.61	4.97	1.99	2.22	5.18	0.91	3.09	3.41	5.43	38.44
2007	5.99	2.45	1.10	0.99	1.57	3.97	3.94	4.18	1.27	4.79	1.89	4.03	36.17
2008	4.26	9.00	9.11	4.28	1.46	8.64	4.02	9.29	0.74	5.11	3.18	8.23	67.32
2009	2.33	3.26	7.11	7.73	9.17	2.78	3.88	3.19	5.22	3.39	2.35	9.57	59.98
2010	7.53	3.99	3.41	4.01	5.09	2.92	2.31	0.84	1.33	0.22	5.82	0.63	38.10
2011	4.33	4.04	5.00	0.92	0.78	1.66	5.11	1.87	2.26	1.84	1.94	3.75	33.50
2012	3.79	7.49	5.94	3.17	1.42	7.35	5.05	14.35	5.17	1.75	1.30	4.10	60.88
2013	1.05	12.86	2.99	3.54	0.64	3.72	13.39	13.17	2.14	1.96	3.91	4.44	63.81
2014	2.15	4.99	7.70	13.18	4.03	2.32	5.69	2.55	6.03	2.03	5.93	5.32	61.92
2015	3.4	3.8	2.17	9.52	3.55	4.04	4.85	2.75	4.15	1.00	7.33	8.67	55.23
2016	4.8	3.51	8.15	4.94	1.74	3.49	2.79	7.28	4.19	0.22	0.8	12.33	54.24
2017	7.28	3.78	2.11	2.12	4.28	11.53	6.82	4.47	3.75	0.97	0.2	2.76	50.07
<b>2018</b>	<b>4.26</b>	<b>10.50</b>	<b>5.38</b>	<b>3.72</b>	<b>5.06</b>	<b>7.97</b>	<b>5.99</b>	<b>5.67</b>	<b>2.67</b>	<b>5.66</b>	<b>6.94</b>	<b>11.9</b>	<b>75.68</b>
<b>Deviation from the Average Monthly Rainfall</b>													
Inches	-0.65	5.36	-0.03	-0.60	1.52	3.00	-0.16	0.40	-1.70	2.93	3.53	7.47	21.09
<b>Monthly Average Rainfall, 1952-2018</b>													
AVG.	4.91	5.14	5.41	4.32	3.54	4.97	6.15	5.27	4.37	2.73	3.41	4.39	54.59
<b>% of Annual Rainfall Occuring each Month</b>													
	9.0%	9.4%	9.9%	7.9%	6.5%	9.1%	11.3%	9.7%	8.0%	5.0%	6.2%	8.0%	
<b>Record High/Low for the Month</b>													
<b>LOW</b>	0.75	0.82	0.84	0.13	0.09	1.07	1.19	0.84	0.32	0.00	0.20	0.25	<b>28.68</b>
<b>HIGH</b>	13.62	12.86	11.54	13.18	10.03	12.90	13.71	14.35	16.84	9.61	8.14	15.31	<b>80.56</b>



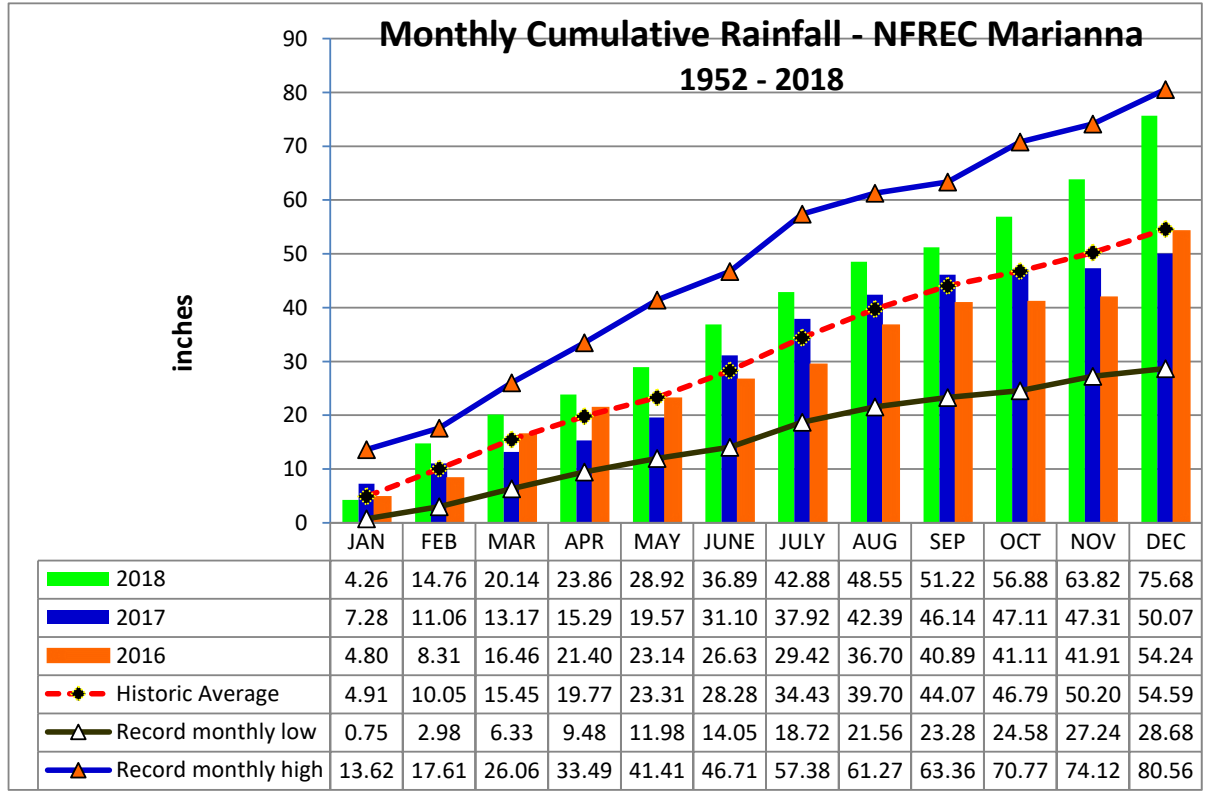
**Jackson County**  
**Monthly Cumulative Rainfall, 1952 -2018**  
North Florida Research & Education Center Marianna,  
FL



YEAR	JAN	FEB	MAR	APR	MAY	JUNE	JULY	AUG	SEP	OCT	NOV	DEC
1952	1.14	10.02	14.50	16.61	21.74	22.86	28.81	37.62	40.71	41.36	44.62	48.04
1953	4.84	12.10	15.13	23.56	25.99	29.96	36.80	38.43	44.76	45.41	49.50	64.81
1954	1.33	4.82	7.44	10.02	<b>11.98</b>	15.44	<b>18.72</b>	<b>21.56</b>	<b>23.28</b>	<b>24.58</b>	<b>27.24</b>	<b>28.68</b>
1955	3.66	5.49	<b>6.33</b>	12.13	15.16	16.78	23.53	27.28	29.72	31.82	32.54	33.31
1956	3.59	8.77	12.54	14.58	18.61	24.06	32.58	36.67	43.11	48.19	48.47	51.81
1957	<b>0.75</b>	3.40	8.57	14.31	18.91	24.66	34.49	40.40	57.24	58.55	64.79	67.01
1958	4.48	8.09	12.82	20.04	25.61	31.61	40.00	43.45	47.13	49.01	50.76	53.08
1959	3.67	10.73	19.23	24.96	31.91	35.68	40.51	44.18	47.25	55.18	55.39	56.92
1960	3.36	10.44	13.85	20.65	23.85	28.60	33.57	38.37	44.59	46.59	47.06	49.41
1961	4.23	8.38	12.02	17.59	21.56	25.97	29.96	41.05	43.65	43.65	46.49	52.72
1962	1.72	4.52	12.65	15.93	18.79	22.46	30.43	36.50	39.57	42.39	47.55	49.22
1963	7.31	10.33	13.51	14.87	18.37	26.36	31.52	33.02	38.27	38.28	42.50	48.55
1964	10.80	<b>17.61</b>	24.02	<b>33.49</b>	35.72	41.40	50.62	53.69	61.16	<b>70.77</b>	<b>74.12</b>	<b>80.56</b>
1965	2.63	8.72	14.23	18.19	18.37	27.97	31.23	35.41	39.89	43.30	45.11	48.71
1966	5.56	15.40	17.97	18.74	24.54	27.67	30.92	40.74	45.83	47.24	49.27	53.89
1967	8.27	11.59	13.78	13.91	16.52	23.54	30.03	33.61	35.01	36.87	39.27	47.25
1968	1.28	3.58	6.98	<b>9.48</b>	12.87	<b>14.05</b>	19.50	24.11	27.10	28.51	33.62	38.96
1969	1.68	5.17	12.25	16.79	19.80	21.51	34.69	37.74	43.38	44.88	46.10	49.90
1970	4.16	13.36	22.22	24.05	25.86	29.55	34.59	42.60	43.09	47.49	49.70	52.83
1971	1.97	8.08	15.23	18.40	21.43	25.28	30.48	37.24	39.71	41.55	43.49	47.19
1972	3.62	9.65	16.06	16.44	19.31	28.20	31.98	37.37	39.51	41.95	45.24	49.01
1973	8.14	15.85	24.23	31.83	38.70	42.33	53.45	57.96	<b>63.36</b>	63.63	67.27	72.60
1974	5.24	11.04	13.70	17.10	20.88	22.44	25.73	33.74	38.42	39.26	41.40	44.29
1975	10.21	16.57	21.48	31.83	35.80	39.90	53.61	59.01	62.82	67.17	70.06	73.34
1976	6.99	8.49	13.38	15.25	24.14	27.22	30.25	33.72	39.19	45.37	51.09	55.06
1977	3.47	5.28	11.80	12.68	13.28	19.64	23.19	28.41	38.24	40.83	48.97	53.16
1978	7.28	10.56	17.81	22.46	29.19	32.98	40.23	45.13	46.11	46.31	52.32	55.97
1979	7.30	15.08	18.34	26.09	32.31	33.62	41.11	47.41	58.92	59.45	63.92	66.76
1980	6.58	9.54	21.08	30.37	34.87	38.37	44.24	46.77	51.33	56.04	57.56	57.81
1981	1.70	7.02	12.96	15.99	18.72	23.46	27.48	30.01	32.45	34.20	35.05	39.99
1982	4.17	9.78	12.69	18.62	24.01	27.01	34.52	38.94	44.94	47.59	49.93	59.07
1983	4.92	11.76	20.29	28.17	30.44	36.10	37.29	39.82	48.79	52.31	58.21	65.86
1984	5.49	10.50	19.12	25.41	27.91	33.22	45.23	50.99	51.31	52.91	54.54	55.34
1985	4.60	9.06	11.66	12.84	17.28	22.96	26.64	32.22	33.64	41.06	48.97	54.31
1986	5.68	15.95	19.16	19.99	22.25	24.10	26.85	30.97	33.32	35.54	39.94	45.62
1987	8.62	14.14	21.37	21.77	26.23	31.66	37.17	41.35	43.62	43.68	47.70	48.51
1988	5.57	11.97	20.38	23.07	23.35	24.42	29.85	33.83	39.36	41.34	44.62	45.85
1989	1.59	4.33	9.29	12.92	19.93	32.83	44.02	47.08	50.44	57.64	62.35	67.80
1990	5.26	9.83	14.38	17.38	20.60	24.62	28.27	31.18	32.03	33.37	34.30	37.72
1991	<b>13.62</b>	17.06	<b>26.06</b>	31.38	<b>41.41</b>	<b>46.71</b>	<b>57.38</b>	<b>61.27</b>	62.80	63.97	65.57	68.57
1992	8.37	14.66	22.58	25.08	26.49	37.65	46.34	53.06	56.25	58.33	65.73	68.66
1993	12.00	15.38	22.79	24.29	25.89	30.07	36.75	40.64	44.08	46.98	49.25	52.88
1994	8.64	11.17	17.42	21.76	23.58	34.99	45.94	55.02	61.46	69.08	71.61	75.40
1995	5.23	8.36	12.65	17.00	20.90	26.46	29.48	35.64	36.50	44.01	48.13	49.91
1996	3.64	9.63	18.10	23.86	25.36	30.79	33.62	47.90	53.22	57.03	59.04	62.69

YEAR	JAN	FEB	MAR	APR	MAY	JUNE	JULY	AUG	SEP	OCT	NOV	DEC
1997	6.68	11.97	14.60	24.68	30.59	37.00	42.73	47.38	51.16	53.26	60.11	68.55
1998	6.28	14.58	20.69	22.93	24.38	26.73	31.10	33.30	49.61	49.91	51.96	53.94
1999	6.95	9.85	13.46	14.96	21.67	30.66	39.30	43.32	47.65	50.78	54.34	56.84
2000	3.78	8.74	13.22	17.27	17.36	21.36	24.76	31.91	39.11	39.82	44.25	47.46
2001	2.16	2.98	12.98	14.97	17.49	25.73	30.39	38.60	40.50	42.01	43.71	44.49
2002	3.82	6.26	11.77	17.55	19.74	23.19	33.53	36.83	48.66	56.02	63.78	69.77
2003	2.30	9.33	17.51	22.40	25.51	31.62	39.46	45.45	47.84	51.42	54.46	57.58
2004	3.19	10.85	11.75	16.12	17.31	23.97	28.89	30.56	40.57	44.46	49.43	52.68
2005	3.33	5.64	14.69	21.73	23.40	30.87	40.31	52.02	53.64	53.67	56.82	61.63
2006	4.82	8.72	9.63	11.24	16.21	18.20	20.42	25.60	26.51	29.60	33.01	38.44
2007	5.99	8.44	9.54	10.53	12.10	16.07	20.01	24.19	25.46	30.25	32.14	36.17
2008	4.26	13.26	22.37	26.65	28.11	36.75	40.77	50.06	50.80	55.91	59.09	67.32
2009	2.33	5.59	12.70	20.43	29.60	32.38	36.26	39.45	44.67	48.06	50.41	59.98
2010	7.53	11.52	14.93	18.94	24.03	26.95	29.26	30.10	31.43	31.65	37.47	38.10
2011	4.33	8.37	13.37	14.29	15.07	16.73	21.84	23.71	25.97	27.81	29.75	33.50
2012	3.79	11.28	17.22	20.39	21.81	29.16	34.21	48.56	53.73	55.48	56.78	60.88
2013	1.05	13.91	16.90	20.44	21.08	24.80	38.19	51.36	53.50	55.46	59.37	63.81
2014	2.15	7.14	14.84	28.02	32.05	34.37	40.06	42.61	48.64	50.67	56.60	61.92
2015	3.40	7.20	9.37	18.89	22.44	26.48	31.33	34.08	38.23	39.23	46.56	55.23
2016	4.80	8.31	16.46	21.40	23.14	26.63	29.42	36.70	40.89	41.11	41.91	54.24
2017	7.28	11.06	13.17	15.29	19.57	31.10	37.92	42.39	46.14	47.11	47.31	50.07
<b>2018</b>	<b>4.26</b>	<b>14.76</b>	<b>20.14</b>	<b>23.86</b>	<b>28.92</b>	<b>36.89</b>	<b>42.88</b>	<b>48.55</b>	<b>51.22</b>	<b>56.88</b>	<b>63.82</b>	<b>75.68</b>

Deviation from the Average Accumulation												
Inches	-0.65	4.71	4.69	4.09	5.61	8.61	8.45	8.85	7.15	10.09	13.62	21.09
Average Accumulation, 1952-2018												
Inches	4.91	10.05	15.45	19.77	23.31	28.28	34.43	39.70	44.07	46.79	50.20	54.59
Record High/Low Accumulation												
<b>LOW</b>	0.75	2.98	6.33	9.48	11.98	14.05	18.72	21.56	23.28	24.58	27.24	28.68
<b>HIGH</b>	13.62	17.61	26.06	33.49	41.41	46.71	57.38	61.27	63.36	70.77	74.12	80.56



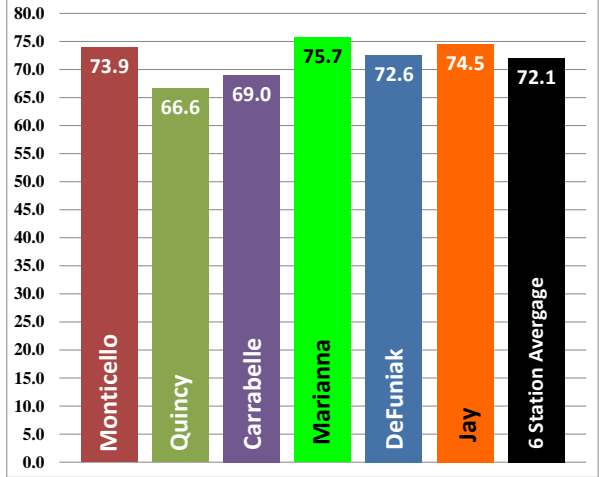
## 2018 UF/IFAS FAWN Panhandle Weather Station Summary

FAWN Station	Data	Jan	Feb	Mar	Apr	May	June	July	Aug	Sept	Oct	Nov	Dec	Total
Monticello	Rain	1.3	3.1	2.0	2.8	9.1	9.4	8.9	9.1	2.9	2.3	5.8	17.2	73.9
	Hist Avg	4.5	4.6	6.1	4.1	3.4	5.7	7.0	6.9	5.4	3.6	3.1	3.7	51.3
	Deviation	-3.2	-1.5	-4.1	-1.3	5.7	3.7	1.9	2.2	-2.6	-1.3	2.7	13.5	22.6
Quincy	Rain	2.1	5.3	5.4	2.7	8.1	3.6	7.1	6.4	2.9	4.9	7.7	10.4	66.6
	Hist Avg	5.0	4.3	5.6	3.7	4.2	5.2	6.3	6.2	4.1	3.4	3.3	3.7	48.0
	Deviation	-2.9	1.0	-0.2	-1.0	3.9	-1.6	0.8	0.2	-1.2	1.5	4.4	6.7	18.6
Carrabelle	Rain	2.1	4.2	1.0	1.5	6.5	3.9	9.9	12.6	7.4	5.1	2.6	12.2	69.0
	Hist Avg	3.8	3.7	4.9	3.0	2.7	5.3	7.3	7.9	7.3	3.7	3.2	3.0	49.6
	Deviation	-1.7	0.5	-3.9	-1.5	3.8	-1.4	2.6	4.7	0.1	1.4	-0.6	9.2	19.4
Marianna	Rain	4.3	10.5	5.4	3.7	5.1	8.0	6.0	5.7	2.7	5.7	6.9	11.9	75.7
	Hist Avg	4.9	5.1	5.4	4.3	3.5	5.0	6.1	5.3	4.4	2.7	3.4	4.4	46.8
	Deviation	-0.6	5.4	0.0	-0.6	1.5	3.0	-0.2	0.4	-1.7	2.9	3.5	7.5	28.9
DeFuniak	Rain	1.3	11.2	5.0	2.9	7.9	3.6	7.4	5.9	8.6	3.6	5.8	9.4	72.6
	Hist Avg	4.9	5.4	5.6	3.9	4.5	7.1	7.2	6.3	5.7	3.7	4.8	4.5	54.4
	Deviation	-3.7	5.8	-0.6	-1.0	3.3	-3.5	0.2	-0.4	3.0	-0.1	1.0	4.9	18.3
Jay	Rain	2.8	5.5	1.3	4.0	3.7	7.4	6.8	6.4	13.2	2.1	7.9	13.2	74.5
	Hist Avg	5.5	5.3	6.6	4.8	4.8	5.8	7.0	6.2	5.5	3.3	5.1	4.7	54.8
	Deviation	-2.7	0.2	-5.3	-0.8	-1.1	1.6	-0.2	0.2	7.7	-1.2	2.8	8.5	19.7
<b>6 Station Average</b>		<b>2.3</b>	<b>6.6</b>	<b>3.4</b>	<b>2.9</b>	<b>6.7</b>	<b>6.0</b>	<b>7.7</b>	<b>7.7</b>	<b>6.3</b>	<b>3.9</b>	<b>6.1</b>	<b>12.4</b>	<b>72.1</b>

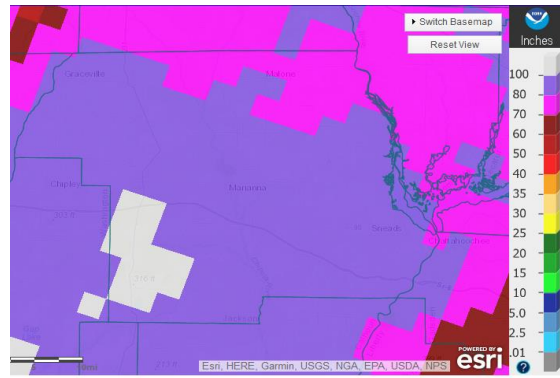
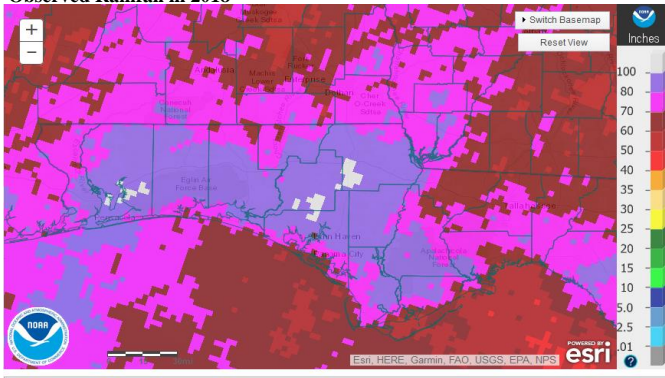
FAWN Station Down - March 2018 Rainfall used NWS Precip Estimates

Hist Avg 50.8  
Deviation 21.2

### 2018 Panhandle FAWN Jan-Dec Rainfall Totals



### Observed Rainfall in 2018



### Departure from Normal Rainfall in 2018

