



Jackson County 2019 Weather Data

68 Years of Weather Data Recorded at the UF/IFAS Marianna North Florida Research and Education Center



Doug Mayo
Jackson County Extension Director

1952-2008 Rainfall Data compiled by
Ed Jowers, Emeritus County Extension Director

Data provided by Florida Automated Weather Station (FAWN)
UF/IFAS North Florida Research and Education Center
Greenwood, Florida



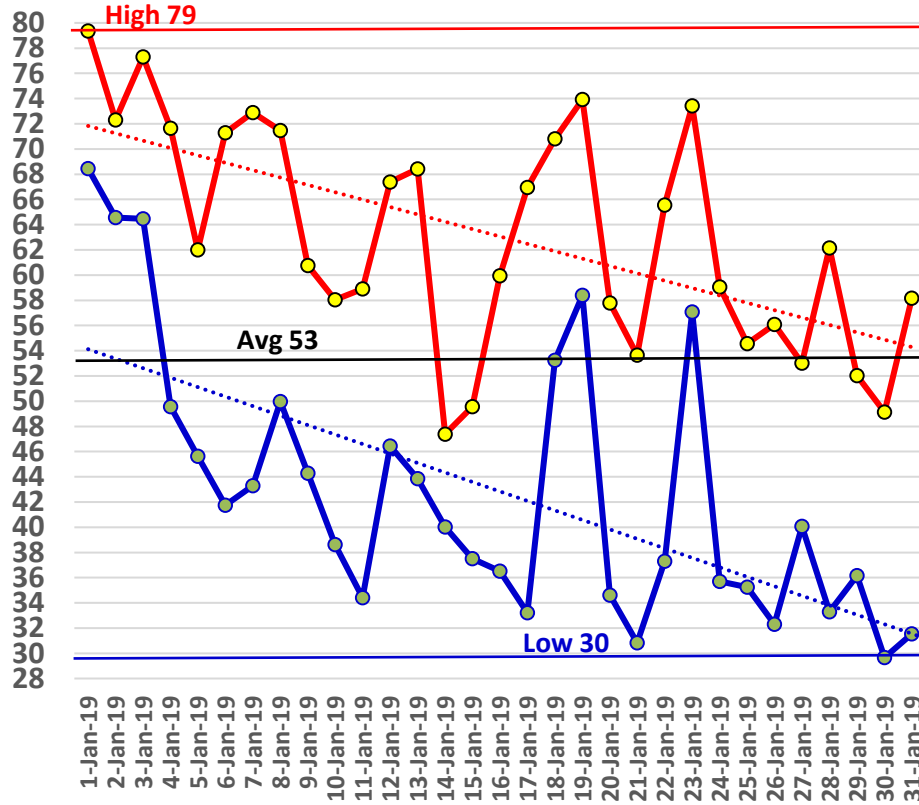
<http://fawn.ifas.ufl.edu/>

Tower Name	Tower Number	Latitude Degree, Minutes	Latitude Degrees, Minutes, Seconds	Latitude Degrees Decimal	Longitude Degree, Minutes	Longitude Degrees, Minutes, Seconds	Longitude Degrees Decimal	Elevation Feet
Marianna	130.00	N 30°51.000'	N 30°50'00.00"	N 30.85000°	-85°09.910'	-85°09'54.60"	-85.16516°	115'

January Daily Weather Data

Temperature							Precipitation		
Date	Air Temp 6 ft			Soil Temp 4 inch			Rain	Evapo Trans	
	Avg	Min	Max	Avg	Min	Max	Inches	Inches	
1-Jan-19	73	68	79	69	67	73		0.06	
2-Jan-19	68	65	72	68	66	70	2.07	0.05	
3-Jan-19	70	64	77	68	66	72		0.06	
4-Jan-19	63	50	72	65	58	68	0.82	0.06	
5-Jan-19	52	46	62	57	55	63		0.05	
6-Jan-19	55	42	71	58	52	66		0.05	
7-Jan-19	58	43	73	58	53	66	0.03	0.05	
8-Jan-19	60	50	71	60	56	66		0.06	
9-Jan-19	54	44	61	58	53	62		0.05	
10-Jan-19	46	39	58	53	49	59		0.04	
11-Jan-19	47	34	59	53	47	60		0.04	
12-Jan-19	58	46	67	56	52	60		0.06	
13-Jan-19	59	44	68	60	55	65		0.06	
14-Jan-19	45	40	47	53	51	55	0.08	0.04	
15-Jan-19	44	38	50	53	50	58		0.04	
16-Jan-19	45	37	60	53	48	60		0.04	
17-Jan-19	51	33	67	54	47	61		0.05	
18-Jan-19	61	53	71	59	55	64	0.02	0.06	
19-Jan-19	65	58	74	62	59	66		0.06	
20-Jan-19	42	35	58	52	46	61		0.06	
21-Jan-19	41	31	54	49	43	57		0.04	
22-Jan-19	51	37	66	51	44	58	1.19	0.06	
23-Jan-19	65	57	73	59	54	63		0.07	
24-Jan-19	46	36	59	55	48	62	1.96	0.06	
25-Jan-19	44	35	55	50	44	57	0.02	0.05	
26-Jan-19	44	32	56	50	44	57		0.05	
27-Jan-19	46	40	53	50	48	52		0.05	
28-Jan-19	48	33	62	51	44	59		0.06	
29-Jan-19	47	36	52	50	45	53	0.08	0.05	
30-Jan-19	38	30	49	46	41	52	0.26	0.05	
31-Jan-19	44	32	58	48	43	56		0.05	
High			79			73			
Low		30			41				
Average	53	43	63	56	51	61			
Days over 95 ⁰				Total for Month			6.53	1.63	Year Cumulative Rain ET 6.5 1.6 10.0 4.9 1.6 4.9
				Number of Rain Days			10.00		
				Historic Average			4.93		
				Deviation from Average			1.60		
Days below 32 ⁰	3					Net Gain/loss (Rain - ET)		4.9	

Jan Marianna FAWN 6' Air Temps

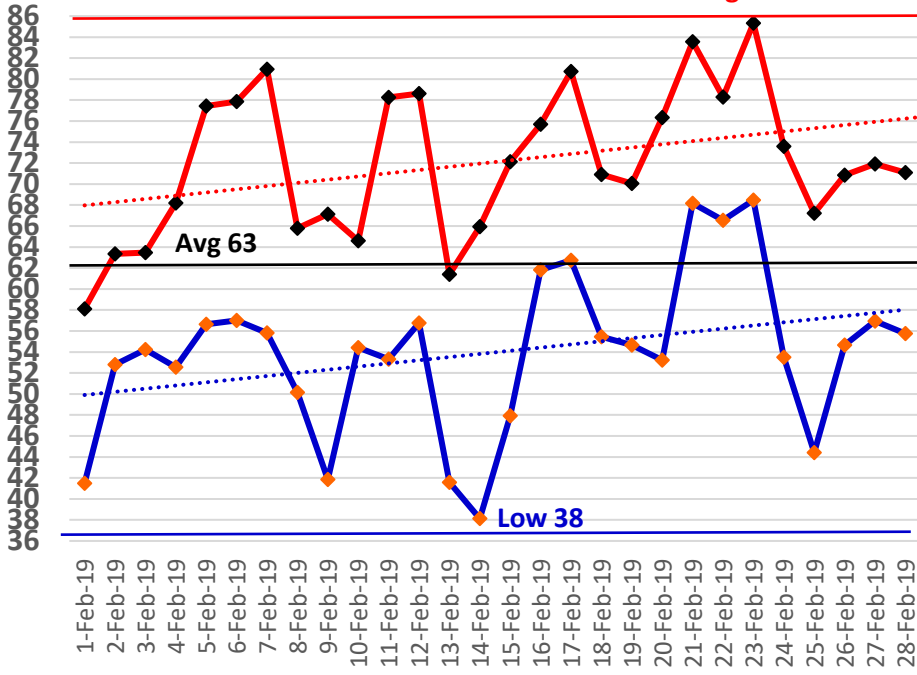


February Daily Weather Data

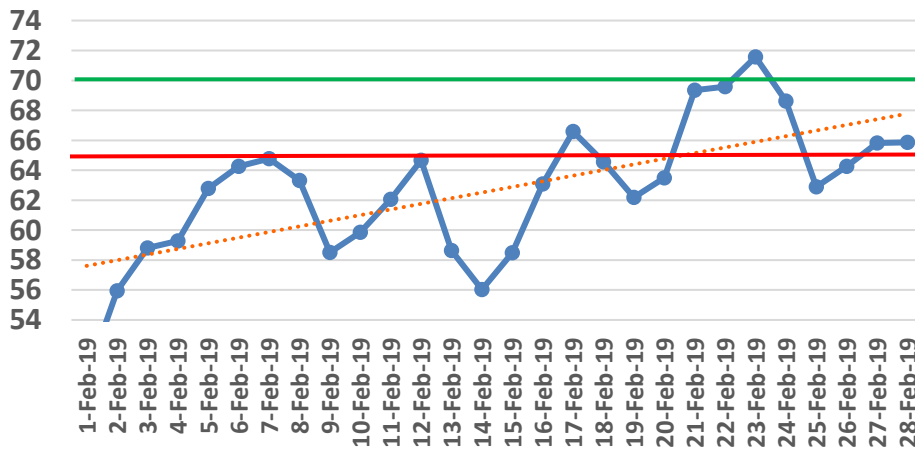
Date	Temperature						Precipitation			
	Air Temp 6 ft			Soil Temp 4 inch			Rain	Evapo Trans		
	Avg	Min	Max	Avg	Min	Max	Inches	Inches		
1-Feb-19	50	41	58	50	47	54		0.05		
2-Feb-19	58	53	63	56	53	60		0.05		
3-Feb-19	59	54	63	59	57	62		0.05		
4-Feb-19	59	53	68	59	56	64	1.72	0.06		
5-Feb-19	65	57	77	63	58	70		0.08		
6-Feb-19	67	57	78	64	59	70		0.08		
7-Feb-19	68	56	81	65	60	71		0.09		
8-Feb-19	62	50	66	63	59	66	0.03	0.06		
9-Feb-19	54	42	67	59	54	65		0.07		
10-Feb-19	58	54	65	60	57	64		0.06		
11-Feb-19	63	53	78	62	59	67	0.03	0.08		
12-Feb-19	66	57	79	65	61	70		0.08		
13-Feb-19	51	42	61	59	54	64	0.52	0.08		
14-Feb-19	52	38	66	56	51	62		0.07		
15-Feb-19	61	48	72	59	54	64		0.08		
16-Feb-19	68	62	76	63	60	68		0.07		
17-Feb-19	71	63	81	67	63	71		0.09		
18-Feb-19	61	55	71	65	62	68	0.07	0.06		
19-Feb-19	61	55	70	62	60	66	0.02	0.07		
20-Feb-19	64	53	76	63	60	67		0.08		
21-Feb-19	74	68	84	69	66	75		0.1		
22-Feb-19	71	67	78	70	67	74	0.09	0.07		
23-Feb-19	75	68	85	72	68	78		0.12		
24-Feb-19	68	53	74	69	62	72		0.09		
25-Feb-19	56	44	67	63	56	71	0.17	0.09		
26-Feb-19	63	55	71	64	61	68		0.07		
27-Feb-19	64	57	72	66	63	71		0.07		
28-Feb-19	64	56	71	66	62	71	0.11	0.07		
High			85			78				
Low		38			47					
Average	63	54	72	63	59	68				
Days over 95 ^o			0	Total for Month			2.76	2.09	9.3	3.7
				Number of Rain Days			9.00		19.0	
				Historic Average			5.10		10.0	
Days below 32 ^o		0		Deviation from Average			-2.34		-0.7	
				Net Gain/loss (Rain - ET)				0.67		5.6

Year Cumulative	
Rain	ET
9.3	3.7
19.0	
10.0	
-0.7	
	5.6

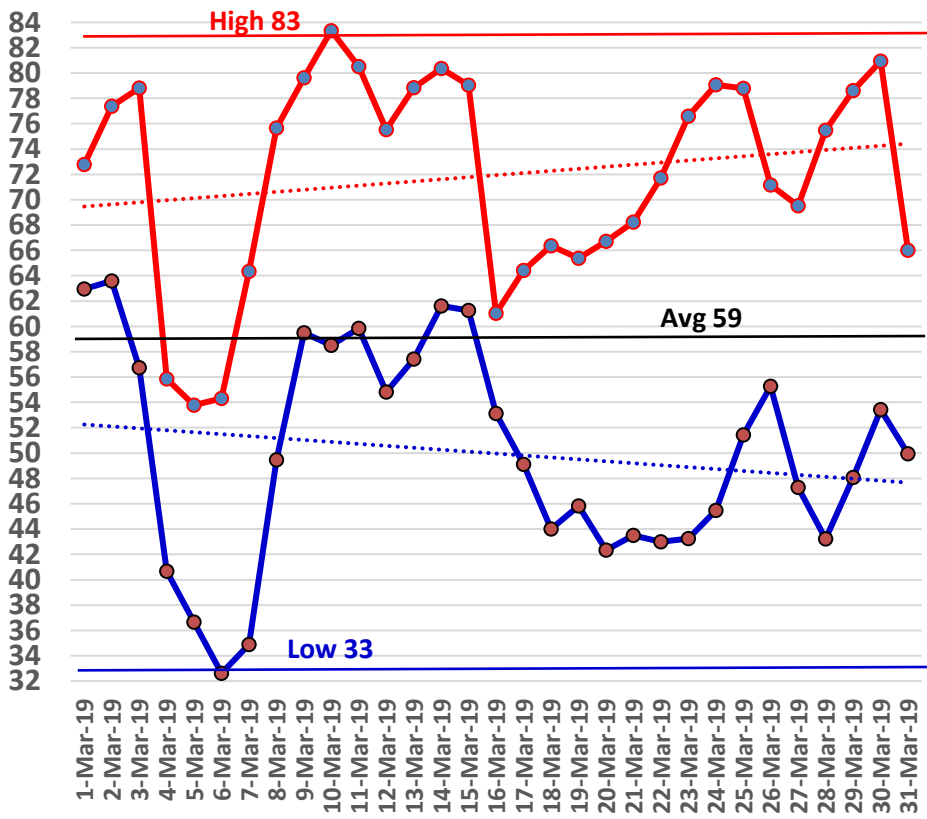
February Marianna FAWN 6' Air Temps



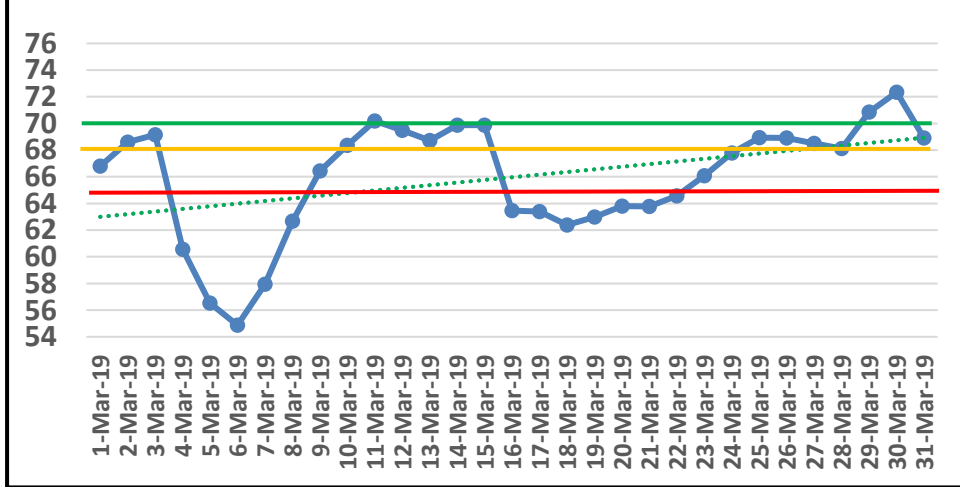
February 18 Avg Soil Temps Marianna



March Marianna FAWN 6' Air Temps



March Avg Soil Temps Marianna



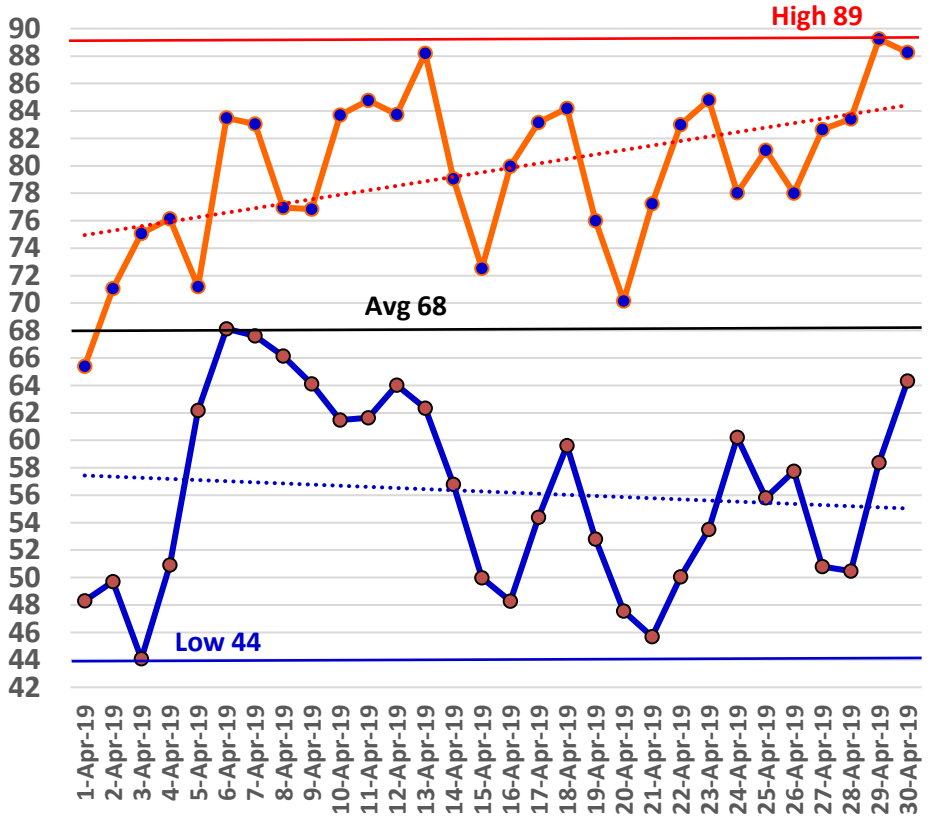
April Daily Weather Data

Date	Temperature						Precipitation					
	Air Temp 6 ft			Soil Temp 4 inch			Rain	Evapo Trans				
	Avg	Min	Max	Avg	Min	Max	Inches	Inches				
1-Apr-19	55	48	65	68	61	77	0.03	0.1				
2-Apr-19	58	50	71	69	62	79	0.07	0.11				
3-Apr-19	61	44	75	70	60	82		0.12				
4-Apr-19	65	51	76	69	63	76		0.1				
5-Apr-19	67	62	71	69	66	73	0.80	0.07				
6-Apr-19	74	68	83	74	69	82		0.12				
7-Apr-19	74	68	83	75	71	82		N/A				
8-Apr-19	71	66	77	72	70	75	0.03	0.07				
9-Apr-19	71	64	77	73	69	78	0.07	0.12				
10-Apr-19	72	61	84	76	67	88	0.03	0.14				
11-Apr-19	73	62	85	78	70	88		0.15				
12-Apr-19	74	64	84	78	72	87		0.13				
13-Apr-19	76	62	88	79	72	88		0.15				
14-Apr-19	71	57	79	74	66	78		0.1				
15-Apr-19	60	50	73	68	60	77	1.43	0.14				
16-Apr-19	64	48	80	71	61	83		0.14				
17-Apr-19	70	54	83	74	66	83		0.14				
18-Apr-19	73	60	84	76	68	85		0.15				
19-Apr-19	66	53	76	72	64	77	0.76	0.12				
20-Apr-19	59	48	70	66	59	74		0.14				
21-Apr-19	62	46	77	69	59	82		0.14				
22-Apr-19	68	50	83	73	63	86	0.04	N/A				
23-Apr-19	70	53	85	75	66	86		0.15				
24-Apr-19	68	60	78	74	70	79		0.11				
25-Apr-19	69	56	81	74	67	81		0.13				
26-Apr-19	68	58	78	72	67	80	0.68	0.15				
27-Apr-19	67	51	83	73	63	85		0.16				
28-Apr-19	68	50	83	75	64	88		0.15				
29-Apr-19	75	58	89	78	69	90		0.17				
30-Apr-19	76	64	88	81	72	92		0.18				
High			89			92						
Low		44			59							
Average	68	56	80	73	66	82						
Days over 95 ⁰	0			Total for Month			3.94	3.65	16.7	10.3		
				Number of Rain Days			10.00			35.0		
Days below 32 ⁰	0			Historic Average			4.32			19.7		
				Deviation from Average			-0.38			-3.1		
				Net Gain/loss (Rain - ET)						0.29		

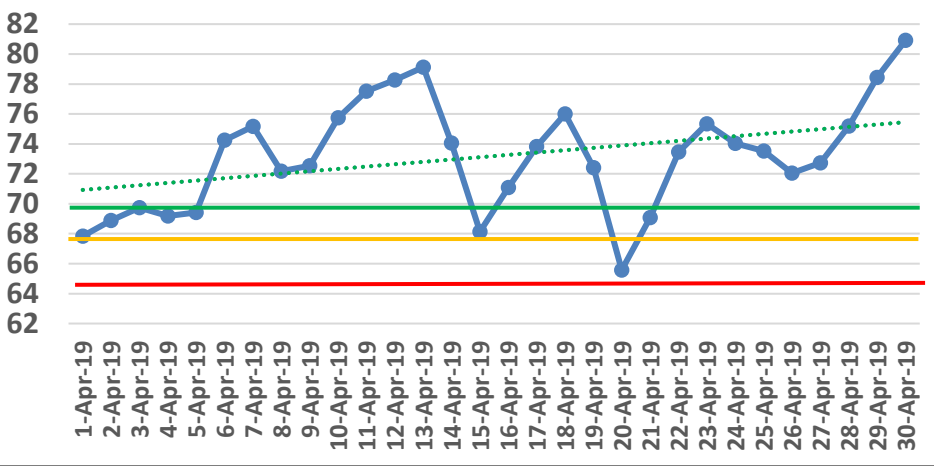
Year Cumulative

Rain	ET
16.7	10.3
35.0	
19.7	
-3.1	
	6.3

April Marianna FAWN 6' Air Temps



April Avg Soil Temps Marianna

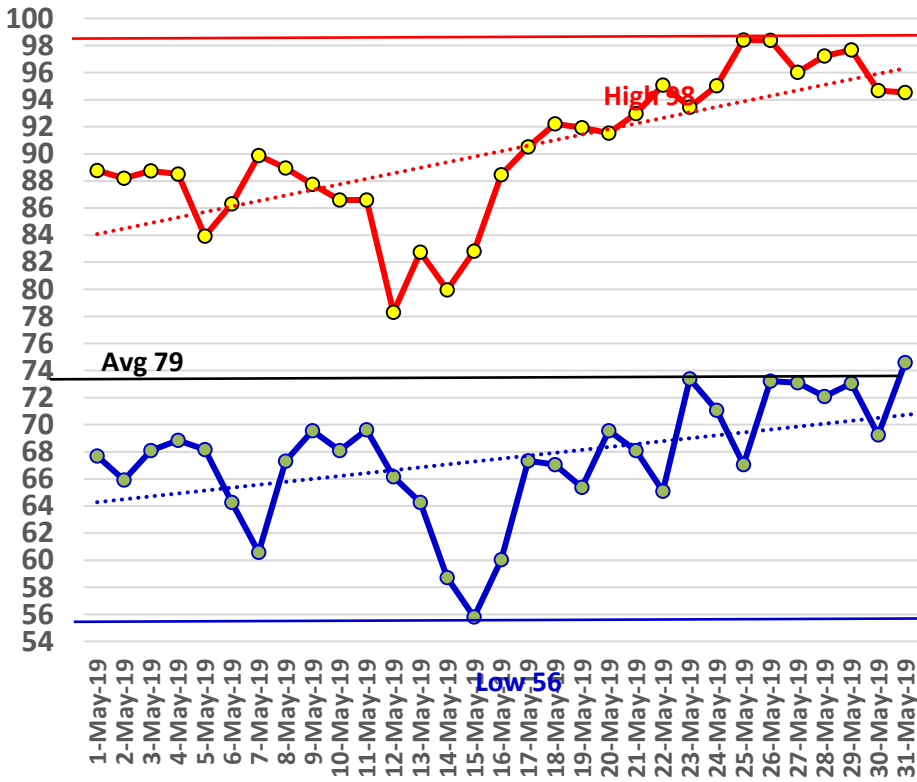


May Daily Weather Data

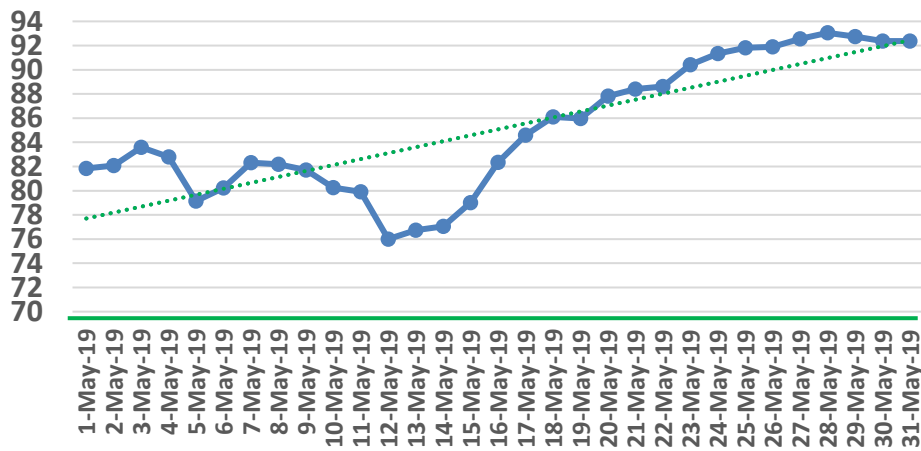
Temperature							Precipitation					
Date	Air Temp 6 ft			Soil Temp 4 inch			Rain	Evapo Trans				
	Avg	Min	Max	Avg	Min	Max	Inches	Inches				
1-May-19	78	68	89	82	75	91		0.17				
2-May-19	77	66	88	82	75	92		0.16				
3-May-19	78	68	89	84	76	93		0.17				
4-May-19	76	69	89	83	77	92		0.15				
5-May-19	76	68	84	79	74	86		0.16				
6-May-19	74	64	86	80	71	92	0.68	0.18				
7-May-19	76	61	90	82	72	95		0.18				
8-May-19	78	67	89	82	75	90		0.15				
9-May-19	76	70	88	82	76	90		0.14				
10-May-19	75	68	87	80	74	90	0.24	0.14				
11-May-19	77	70	87	80	75	87		0.14				
12-May-19	73	66	78	76	73	78		0.08				
13-May-19	75	64	83	77	73	84	0.81	0.13				
14-May-19	70	59	80	77	68	87	0.01	0.16				
15-May-19	70	56	83	79	69	91		0.16				
16-May-19	76	60	88	82	72	94		0.17				
17-May-19	79	67	91	85	76	95		0.17				
18-May-19	79	67	92	86	78	97		0.18				
19-May-19	79	65	92	86	78	96		0.17				
20-May-19	80	70	92	88	80	99		0.18				
21-May-19	81	68	93	88	81	98		0.19				
22-May-19	81	65	95	89	80	99		0.18				
23-May-19	84	73	93	90	82	101	0.02	0.2				
24-May-19	83	71	95	91	83	102		0.21				
25-May-19	84	67	98	92	82	103		0.2				
26-May-19	86	73	98	92	85	101		0.17				
27-May-19	85	73	96	93	85	102		0.2				
28-May-19	84	72	97	93	85	103		0.21				
29-May-19	85	73	98	93	85	102		0.2				
30-May-19	82	69	95	92	84	103	0.02	0.2				
31-May-19	84	75	95	92	86	101		0.19				
High			98			103						
Low		56			68							
Average	79	67	90	85	78	95						
Days over 95 ^o				7			Total for Month		1.78	5.29	18.4	15.6
Days of 100 ^o				0			Number of Rain Days		6.00		41.0	
Days below 32 ^o				0			Historic Average		3.51		23.2	
							Deviation from Average		-1.73		-4.8	
							Net Gain/loss (Rain - ET)			-3.51		2.8

Year Cumulative
Rain ET
18.4 15.6
41.0
23.2
-4.8
2.8

May Marianna FAWN 6' Air Temps



May Avg Soil Temps Marianna

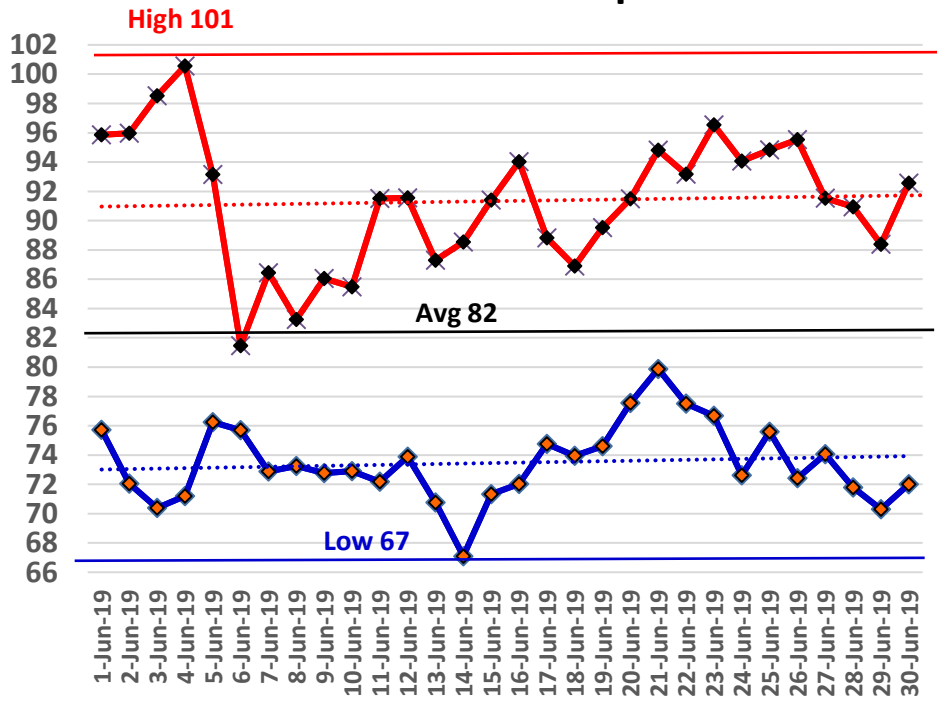


June Daily Weather Data

Date	Temperature						Precipitation	
	Air Temp 6 ft			Soil Temp 4 inch			Rain	Evapo Trans
	Avg	Min	Max	Avg	Min	Max	Inches	Inches
1-Jun-19	83	76	96	93	86	102		0.18
2-Jun-19	84	72	96	93	85	102		0.2
3-Jun-19	85	70	99	94	85	104		0.21
4-Jun-19	86	71	101	95	86	105		0.21
5-Jun-19	85	76	93	93	88	99		0.15
6-Jun-19	78	76	81	87	82	90	0.01	0.07
7-Jun-19	78	73	86	83	80	88	0.21	0.11
8-Jun-19	77	73	83	82	79	85		0.1
9-Jun-19	76	73	86	81	77	86		0.07
10-Jun-19	77	73	85	81	77	86	1.89	0.11
11-Jun-19	80	72	92	84	77	93	0.70	0.19
12-Jun-19	81	74	92	84	80	91		0.17
13-Jun-19	80	71	87	85	79	92		0.18
14-Jun-19	79	67	89	86	78	96		0.2
15-Jun-19	81	71	91	87	81	94		0.18
16-Jun-19	83	72	94	90	82	99		0.22
17-Jun-19	81	75	89	89	85	95		0.18
18-Jun-19	79	74	87	87	83	90		0.12
19-Jun-19	81	75	90	84	81	90	0.34	0.16
20-Jun-19	84	78	91	86	81	92	0.07	0.2
21-Jun-19	86	80	95	89	83	96		0.2
22-Jun-19	85	78	93	90	85	96		0.18
23-Jun-19	85	77	97	92	84	102		0.21
24-Jun-19	82	73	94	90	84	99		0.17
25-Jun-19	84	76	95	88	82	96	0.37	0.21
26-Jun-19	85	72	96	90	81	100		0.19
27-Jun-19	83	74	92	90	84	97		0.16
28-Jun-19	82	72	91	90	84	99	0.03	0.17
29-Jun-19	79	70	88	86	81	94		0.16
30-Jun-19	81	72	93	88	80	98		0.19
High			101			105		
Low		67			77			
Average	82	73	91	88	82	95		
Days over 95 ^o				6				
Days of 100 ^o				1				
Days below 32 ^o		0						
Total for Month							3.62	5.05
Number of Rain Days							8.00	
Historic Average							4.95	
Deviation from Average							-1.33	
Net Gain/loss (Rain - ET)								-1.43

Year Cumulative	
Rain	ET
22.1	20.7
49.0	
28.2	
-6.1	
	1.4

June Marianna FAWN 6' Air Temps

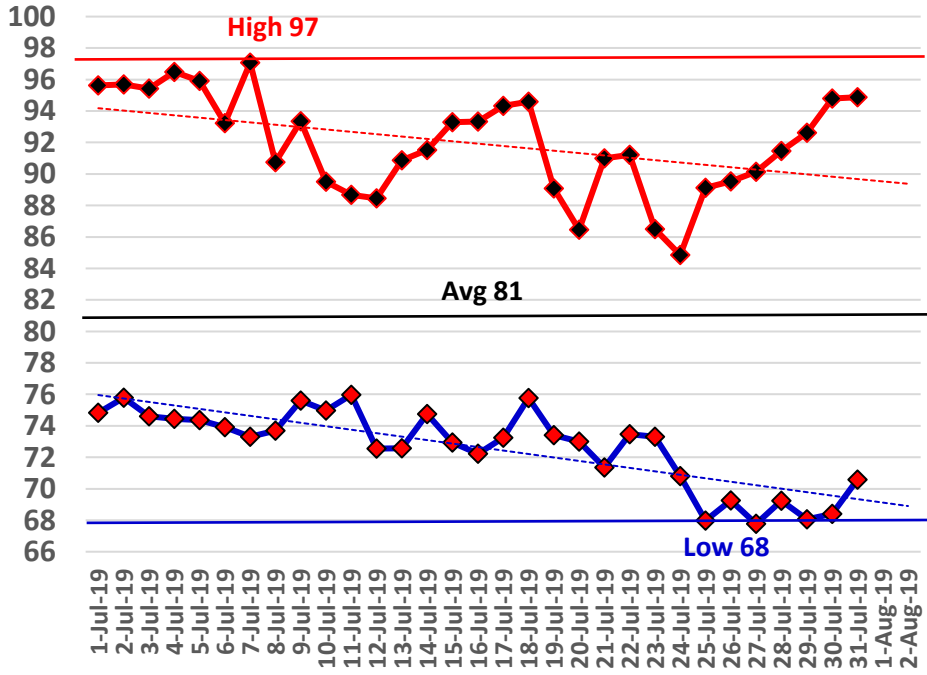


July Daily Weather Data

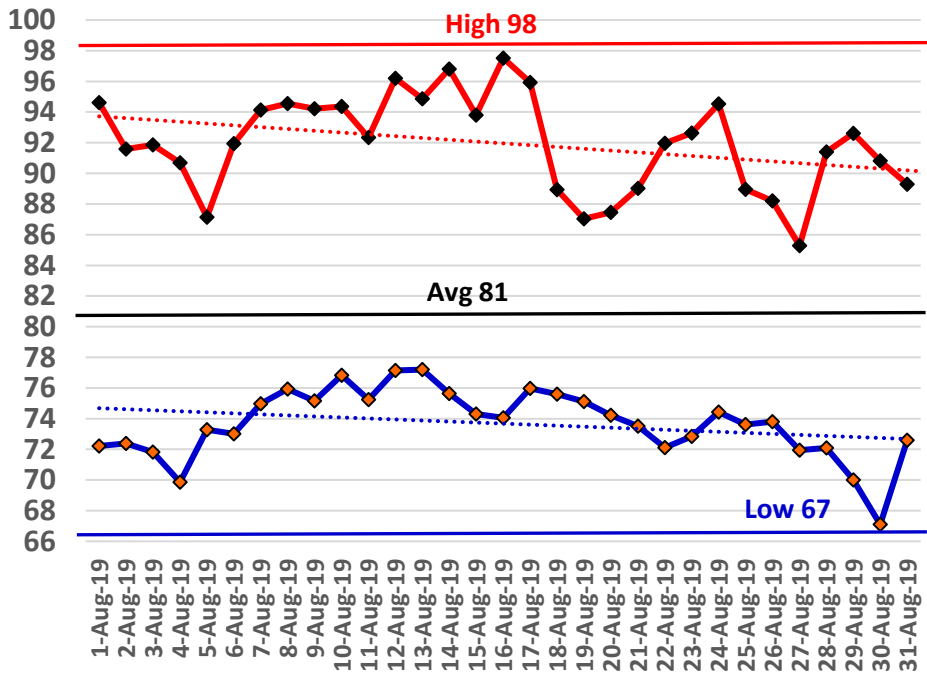
Date	Temperature						Precipitation	
	Air Temp 6 ft			Soil Temp 4 inch			Rain	Evapo Trans
	Avg	Min	Max	Avg	Min	Max	Inches	Inches
1-Jul-19	84	75	96	89	81	99	0.53	0.20
2-Jul-19	82	76	96	89	83	101		0.17
3-Jul-19	83	75	95	88	81	97	0.25	0.19
4-Jul-19	85	74	96	91	83	100	0.02	0.20
5-Jul-19	83	74	96	93	85	105		0.19
6-Jul-19	79	74	93	89	83	99		N/A
7-Jul-19	83	73	97	87	81	97		N/A
8-Jul-19	80	74	91	86	81	93	0.81	0.16
9-Jul-19	80	76	93	86	81	96	0.73	0.15
10-Jul-19	80	75	90	86	81	92	0.02	N/A
11-Jul-19	81	76	89	85	80	91	1.47	0.17
12-Jul-19	79	73	88	84	80	89	0.48	0.15
13-Jul-19	81	73	91	84	79	90		0.15
14-Jul-19	79	75	92	84	80	92		0.14
15-Jul-19	79	73	93	84	79	93	0.97	0.16
16-Jul-19	80	72	93	85	79	95	0.27	0.16
17-Jul-19	83	73	94	87	80	95	0.01	0.19
18-Jul-19	83	76	95	88	82	97		0.17
19-Jul-19	79	73	89	86	82	93	0.14	0.12
20-Jul-19	79	73	86	84	81	89		0.13
21-Jul-19	80	71	91	86	79	96		0.17
22-Jul-19	80	73	91	86	81	94	0.42	N/A
23-Jul-19	77	73	87	83	80	88	0.04	0.11
24-Jul-19	77	71	85	83	78	89	0.20	0.13
25-Jul-19	79	68	89	85	77	94		0.17
26-Jul-19	79	69	90	87	79	96		0.19
27-Jul-19	80	68	90	88	80	98		0.19
28-Jul-19	81	69	91	90	82	99		0.18
29-Jul-19	81	68	93	90	82	100		0.19
30-Jul-19	82	68	95	91	83	101		0.19
31-Jul-19	84	71	95	91	84	99		0.18
High			97			105		
Low		68			77			
Average	81	73	92	87	81	95		
				Total for Month		6.36	4.50	
Days over 95 ^o				6		Number of Rain Days	15.00	
Days of 100 ^o				0		Historic Average	6.15	
Days below 32 ^o				0		Deviation from Average	0.21	
				Net Gain/loss (Rain - ET)			1.86	

Year Cumulative	
Rain	ET
28.4	25.2
64.0	
34.3	
-5.9	
	3.2

July Marianna FAWN 6' Air Temps



August Marianna FAWN 6' Air Temps



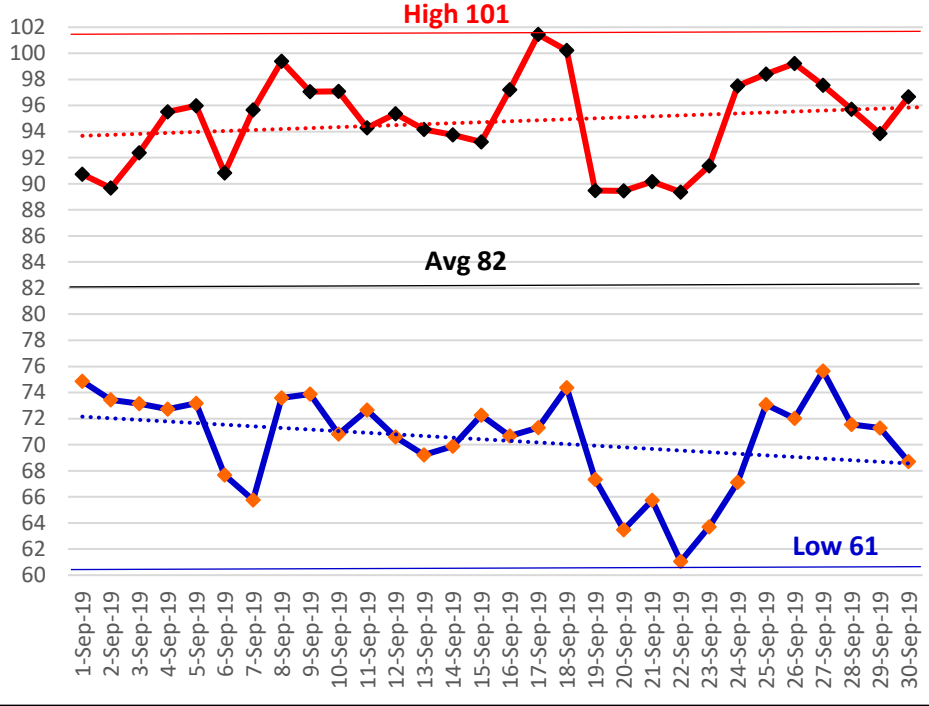
Summer Rain Days - 36 of 92 days

September Daily Weather Data

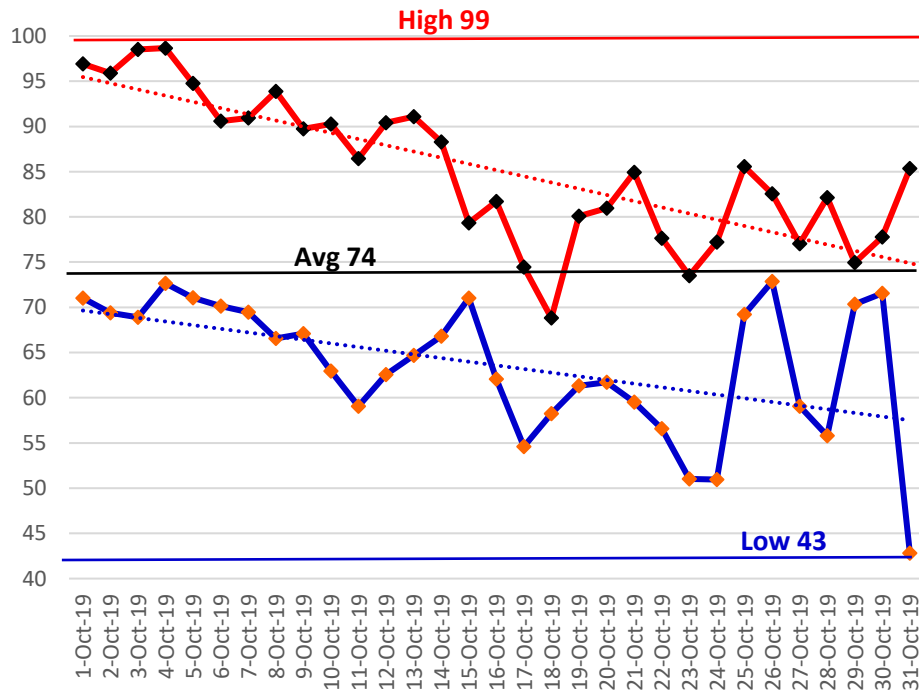
Date	Temperature						Precipitation		
	Air Temp 6 ft			Soil Temp 4 inch			Rain	Evapo Trans	
	Avg	Min	Max	Avg	Min	Max	Inches	Inches	
1-Sep-19	81	75	91	85	82	88	0.31		
2-Sep-19	81	73	90	85	82	88			
3-Sep-19	82	73	92	86	82	91			
4-Sep-19	84	73	96	86	82	90			
5-Sep-19	85	73	96	86	82	90			
6-Sep-19	79	68	91	86	82	90			
7-Sep-19	82	66	96	86	81	92			
8-Sep-19	86	74	99	88	84	92			
9-Sep-19	86	74	97	89	86	93			
10-Sep-19	82	71	97	88	85	93			
11-Sep-19	83	73	94	89	85	93			
12-Sep-19	82	71	95	89	85	92			
13-Sep-19	81	69	94	88	84	93			
14-Sep-19	81	70	94	88	85	91			
15-Sep-19	81	72	93	88	85	91			
16-Sep-19	83	71	97	88	84	92			
17-Sep-19	86	71	101	89	85	93			
18-Sep-19	83	74	100	89	86	92			
19-Sep-19	79	67	89	87	85	91			
20-Sep-19	76	63	89	86	82	89			
21-Sep-19	78	66	90	85	82	89			
22-Sep-19	76	61	89	85	81	89			
23-Sep-19	78	64	91	85	82	90			
24-Sep-19	82	67	98	86	82	90			
25-Sep-19	85	73	98	88	84	92			
26-Sep-19	85	72	99	88	85	92			
27-Sep-19	85	76	98	89	86	92			
28-Sep-19	83	72	96	88	85	92			
29-Sep-19	81	71	94	88	85	92			
30-Sep-19	82	69	97	88	85	93			
High			101			93			
Low		61			81				
Average	82	70	95	87	84	91			
Days over 95 ^o				16		Total for Month		0.31	0.00
Days of 100 ^o				2		Number of Rain Days		1.00	
Days below 32 ^o				0		Historic Average		4.31	
Days of 90+				29		Deviation from Average		-4.00	
						Net Gain/loss (Rain - ET)			0.31

Year Cumulative	
Rain	ET
32.9	25.2
78.0	
43.9	
-11.0	
	7.7

September Marianna FAWN 6' Air Temps



October 2018 Marianna FAWN 6' Air Temps

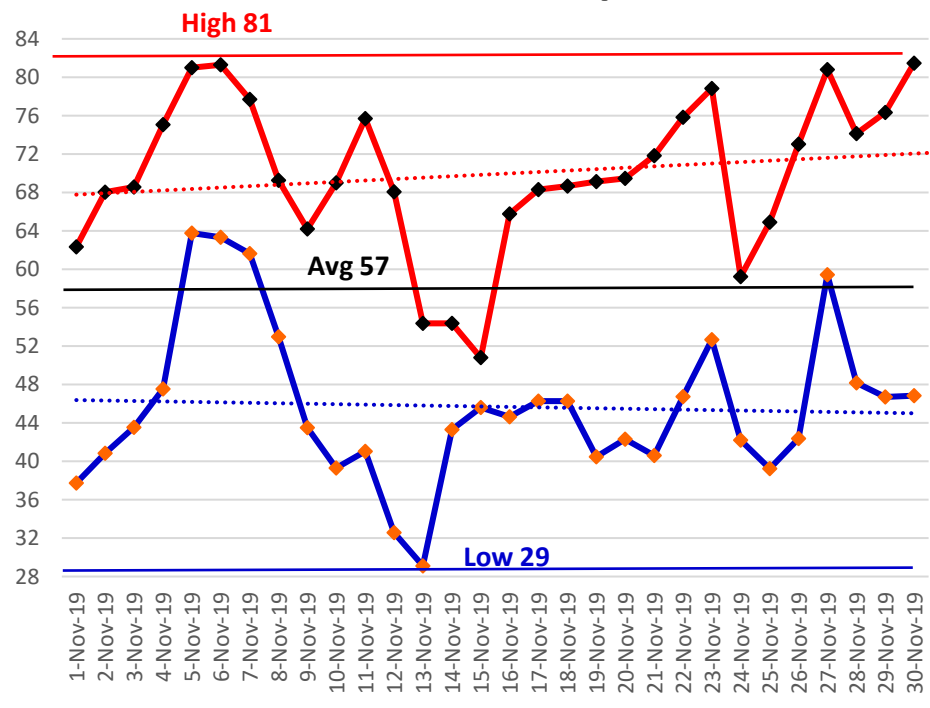


November Daily Weather Data

Date	Temperature						Precipitation	
	Air Temp 6 ft			Soil Temp 4 inch			Rain	Evapo Trans
	Avg	Min	Max	Avg	Min	Max	Inches	Inches
1-Nov-19	49	38	62	66	63	68	0.21	0.06
2-Nov-19	54	41	68	64	62	66		0.07
3-Nov-19	54	44	69	64	61	67		0.07
4-Nov-19	63	48	75	65	62	68		0.07
5-Nov-19	70	64	81	69	67	72		0.08
6-Nov-19	70	63	81	72	69	77		0.08
7-Nov-19	69	62	78	71	68	75		0.06
8-Nov-19	61	53	69	67	63	71	0.56	0.06
9-Nov-19	53	44	64	62	58	68		0.06
10-Nov-19	52	39	69	61	55	69		0.06
11-Nov-19	61	41	76	63	55	70		0.07
12-Nov-19	50	33	68	60	51	65	0.16	0.07
13-Nov-19	41	29	54	53	46	60	0.10	0.05
14-Nov-19	47	43	54	55	52	57		0.04
15-Nov-19	48	46	51	54	53	55	0.35	0.04
16-Nov-19	55	45	66	56	52	62		0.06
17-Nov-19	57	46	68	60	55	66		0.06
18-Nov-19	57	46	69	60	55	66	0.11	0.06
19-Nov-19	55	40	69	59	53	65		0.06
20-Nov-19	55	42	69	59	53	66		0.06
21-Nov-19	55	41	72	59	53	66		0.06
22-Nov-19	61	47	76	61	56	67		0.06
23-Nov-19	66	53	79	65	61	70		0.07
24-Nov-19	50	42	59	59	56	64		0.05
25-Nov-19	50	39	65	58	52	65	0.25	0.05
26-Nov-19	59	42	73	60	53	66		0.06
27-Nov-19	69	59	81	65	61	70		0.07
28-Nov-19	61	48	74	63	58	69		0.06
29-Nov-19	59	47	76	63	57	69		0.06
30-Nov-19	64	47	81	64	57	70		0.07
High			81			77		
Low		29			46			
Average	57	46	70	62	57	67		
Days over 95 ⁰				Total for Month			1.74	1.85
				Number of Rain Days			7.00	
				Historic Average			3.38	
				Deviation from Average			-1.64	
				Net Gain/loss (Rain - ET)				-0.11
Days below 32 ⁰								

Year Cumulative	
Rain	ET
41.1	30.1
94.0	
50.1	
-9.0	
	11.0

November Marianna FAWN 6' Air Temps

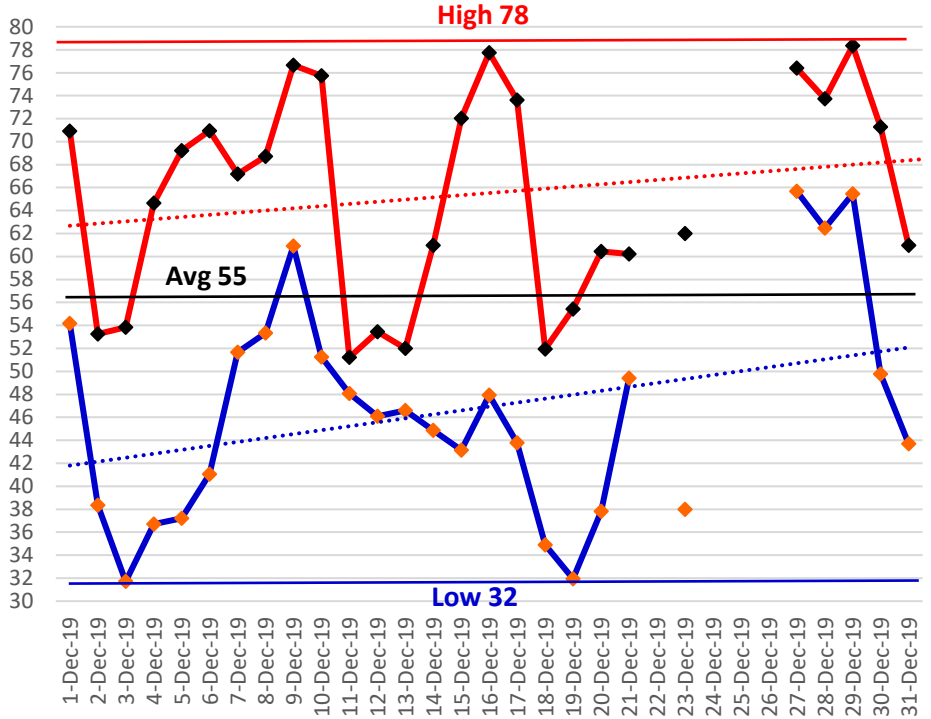


December Daily Weather Data

Date	Temperature						Precipitation	
	Air Temp 6 ft			Soil Temp 4 inch			Rain	Evapo Trans
	Avg	Min	Max	Avg	Min	Max	Inches	Inches
1-Dec-19	65	54	71	65	60	68	0.14	0.06
2-Dec-19	47	38	53	57	53	62		0.04
3-Dec-19	42	32	54	54	49	60		0.04
4-Dec-19	49	37	65	55	49	61		0.05
5-Dec-19	52	37	69	56	50	63		0.05
6-Dec-19	56	41	71	58	53	63		0.06
7-Dec-19	60	52	67	60	56	64		0.05
8-Dec-19	61	53	69	61	57	66		0.05
9-Dec-19	68	61	77	64	61	68	0.19	0.06
10-Dec-19	66	51	76	65	62	68	0.02	0.06
11-Dec-19	50	48	51	57	55	62	0.08	0.04
12-Dec-19	50	46	53	55	54	57	0.05	0.04
13-Dec-19	49	47	52	55	53	57	0.56	0.04
14-Dec-19	52	45	61	57	54	61		0.04
15-Dec-19	57	43	72	57	51	63		0.05
16-Dec-19	64	48	78	60	54	66	0.26	0.06
17-Dec-19	60	44	74	62	54	66		0.07
18-Dec-19	43	35	52	52	48	56	0.34	0.03
19-Dec-19	42	32	55	50	44	56		0.03
20-Dec-19	50	38	60	51	46	57		0.04
21-Dec-19	54	49	60	54	51	56		0.04
22-Dec-19								
23-Dec-19	50	38	62			3	2.66	
24-Dec-19								
25-Dec-19								
26-Dec-19								
27-Dec-19	70	66	76	65	60	67		N/A
28-Dec-19	68	62	74	65	62	67		0.05
29-Dec-19	72	65	78	67	65	71	2.65	0.06
30-Dec-19	62	50	71	65	58	68		0.06
31-Dec-19	51	44	61	57	53	61		0.04
High			78			71		
Low		32			44			
Average	56	47	65	59	54	61		
Days over 95 ⁰	0			Total for Month			6.95	1.21
				Number of Rain Days			10.00	
Days below 32 ⁰	2			Historic Average			4.42	
				Deviation from Average			2.53	
Total days for year								
<32⁰ or >95⁰	6	43		Net Gain/loss (Rain - ET)			5.74	

Year Cumulative	
Rain	ET
48.0	31.3
104.0	
54.5	
-6.5	
	16.7

December Marianna FAWN 6' Air Temps

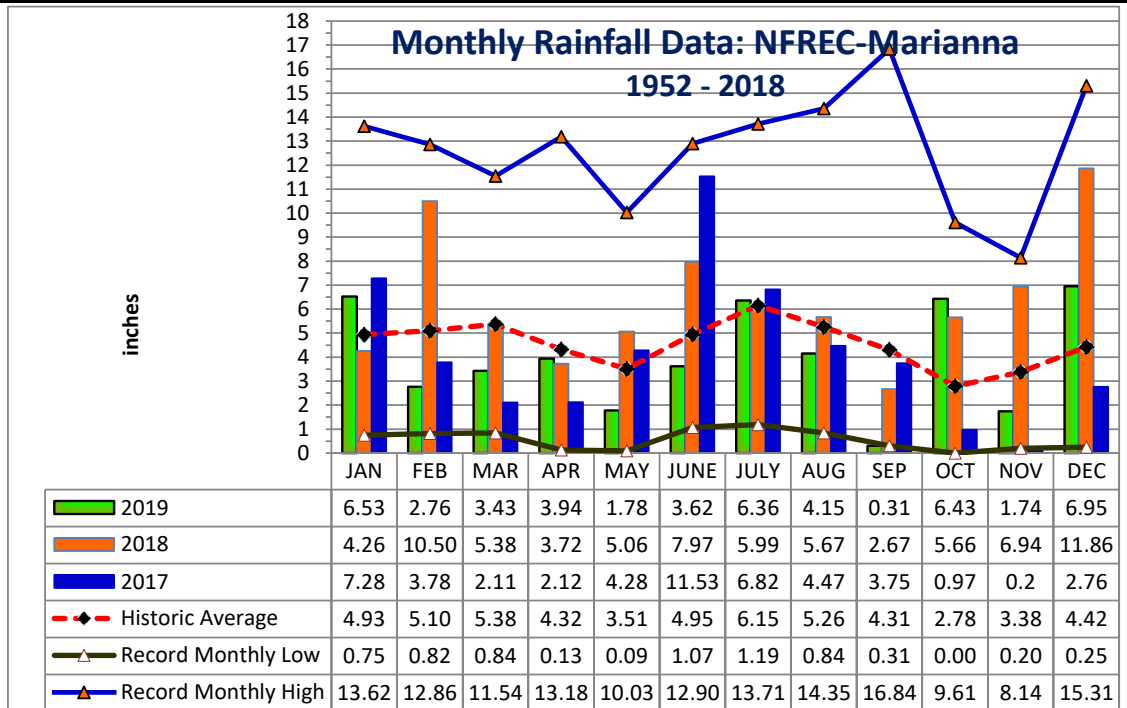




YEAR	JAN	FEB	MAR	APR	MAY	JUNE	JULY	AUG	SEP	OCT	NOV	DEC	TOTAL
1952	1.14	8.88	4.48	2.11	5.13	1.12	5.95	8.81	3.09	0.65	3.26	3.42	48.04
1953	4.84	7.26	3.03	8.43	2.43	3.97	6.84	1.63	6.33	0.65	4.09	15.31	64.81
1954	1.33	3.49	2.62	2.58	1.96	3.46	3.28	2.84	1.72	1.30	2.66	1.44	28.68
1955	3.66	1.83	0.84	5.80	3.03	1.62	6.75	3.75	2.44	2.10	0.72	0.77	33.31
1956	3.59	5.18	3.77	2.04	4.03	5.45	8.52	4.09	6.44	5.08	0.28	3.34	51.81
1957	0.75	2.65	5.17	5.74	4.60	5.75	9.83	5.91	16.84	1.31	6.24	2.22	67.01
1958	4.48	3.61	4.73	7.22	5.57	6.00	8.39	3.45	3.68	1.88	1.75	2.32	53.08
1959	3.67	7.06	8.50	5.73	6.95	3.77	4.83	3.67	3.07	7.93	0.21	1.53	56.92
1960	3.36	7.08	3.41	6.80	3.20	4.75	4.97	4.80	6.22	2.00	0.47	2.35	49.41
1961	4.23	4.15	3.64	5.57	3.97	4.41	3.99	11.09	2.60	0.00	2.84	6.23	52.72
1962	1.72	2.80	8.13	3.28	2.86	3.67	7.97	6.07	3.07	2.82	5.16	1.67	49.22
1963	7.31	3.02	3.18	1.36	3.50	7.99	5.16	1.50	5.25	0.01	4.22	6.05	48.55
1964	10.80	6.81	6.41	9.47	2.23	5.68	9.22	3.07	7.47	9.61	3.35	6.44	80.56
1965	2.63	6.09	5.51	3.96	0.18	9.60	3.26	4.18	4.48	3.41	1.81	3.60	48.71
1966	5.56	9.84	2.57	0.77	5.80	3.13	3.25	9.82	5.09	1.41	2.03	4.62	53.89
1967	8.27	3.32	2.19	0.13	2.61	7.02	6.49	3.58	1.40	1.86	2.40	7.98	47.25
1968	1.28	2.30	3.40	2.50	3.39	1.18	5.45	4.61	2.99	1.41	5.11	5.34	38.96
1969	1.68	3.49	7.08	4.54	3.01	1.71	13.18	3.05	5.64	1.50	1.22	3.80	49.90
1970	4.16	9.20	8.86	1.83	1.81	3.69	5.04	8.01	0.49	4.40	2.21	3.13	52.83
1971	1.97	6.11	7.15	3.17	3.03	3.85	5.20	6.76	2.47	1.84	1.94	3.70	47.19
1972	3.62	6.03	6.41	0.38	2.87	8.89	3.78	5.39	2.14	2.44	3.29	3.77	49.01
1973	8.14	7.71	8.38	7.60	6.87	3.63	11.12	4.51	5.40	0.27	3.64	5.33	72.60
1974	5.24	5.80	2.66	3.40	3.78	1.56	3.29	8.01	4.68	0.84	2.14	2.89	44.29
1975	10.21	6.36	4.91	10.35	3.97	4.10	13.71	5.40	3.81	4.35	2.89	3.28	73.34
1976	6.99	1.50	4.89	1.87	8.89	3.08	3.03	3.47	5.47	6.18	5.72	3.97	55.06
1977	3.47	1.81	6.52	0.88	0.60	6.36	3.55	5.22	9.83	2.59	8.14	4.19	53.16
1978	7.28	3.28	7.25	4.65	6.73	3.79	7.25	4.90	0.98	0.20	6.01	3.65	55.97
1979	7.30	7.78	3.26	7.75	6.22	1.31	7.49	6.30	11.51	0.53	4.47	2.84	66.76
1980	6.58	2.96	11.54	9.29	4.50	3.50	5.87	2.53	4.56	4.71	1.52	0.25	57.81
1981	1.70	5.32	5.94	3.03	2.73	4.74	4.02	2.53	2.44	1.75	0.85	4.94	39.99
1982	4.17	5.61	2.91	5.93	5.39	3.00	7.51	4.42	6.00	2.65	2.34	9.14	59.07
1983	4.92	6.84	8.53	7.88	2.27	5.66	1.19	2.53	8.97	3.52	5.90	7.65	65.86
1984	5.49	5.01	8.62	6.29	2.50	5.31	12.01	5.76	0.32	1.60	1.63	0.80	55.34
1985	4.60	4.46	2.60	1.18	4.44	5.68	3.68	5.58	1.42	7.42	7.91	5.34	54.31
1986	5.68	10.27	3.21	0.83	2.26	1.85	2.75	4.12	2.35	2.22	4.40	5.68	45.62
1987	8.62	5.52	7.23	0.40	4.46	5.43	5.51	4.18	2.27	0.06	4.02	0.81	48.51
1988	5.57	6.40	8.41	2.69	0.28	1.07	5.43	3.98	5.53	1.98	3.28	1.23	45.85
1989	1.59	2.74	4.96	3.63	7.01	12.90	11.19	3.06	3.36	7.20	4.71	5.45	67.80
1990	5.26	4.57	4.55	3.00	3.22	4.02	3.65	2.91	0.85	1.34	0.93	3.42	37.72
1991	13.62	3.44	9.00	5.32	10.03	5.30	10.67	3.89	1.53	1.17	1.60	3.00	68.57
1992	8.37	6.29	7.92	2.50	1.41	11.16	8.69	6.72	3.19	2.08	7.40	2.93	68.66
1993	12.00	3.38	7.41	1.50	1.60	4.18	6.68	3.89	3.44	2.90	2.27	3.63	52.88
1994	8.64	2.53	6.25	4.34	1.82	11.41	10.95	9.08	6.44	7.62	2.53	3.79	75.40
1995	5.23	3.13	4.29	4.35	3.90	5.56	3.02	6.16	0.86	7.51	4.12	1.78	49.91
1996	3.64	5.99	8.47	5.76	1.50	5.43	2.83	14.28	5.32	3.81	2.01	3.65	62.69

YEAR	JAN	FEB	MAR	APR	MAY	JUNE	JULY	AUG	SEP	OCT	NOV	DEC	TOTAL
1997	6.68	5.29	2.63	10.08	5.91	6.41	5.73	4.65	3.78	2.10	6.85	8.44	68.55
1998	6.28	8.30	6.11	2.24	1.45	2.35	4.37	2.20	16.31	0.30	2.05	1.98	53.94
1999	6.95	2.90	3.61	1.50	6.71	8.99	8.64	4.02	4.33	3.13	3.56	2.50	56.84
2000	3.78	4.96	4.48	4.05	0.09	4.00	3.40	7.15	7.20	0.71	4.43	3.21	47.46
2001	2.16	0.82	10.00	1.99	2.52	8.24	4.66	8.21	1.90	1.51	1.70	0.78	44.49
2002	3.82	2.44	5.51	5.78	2.19	3.45	10.34	3.30	11.83	7.36	7.76	5.99	69.77
2003	2.30	7.03	8.18	4.89	3.11	6.11	7.84	5.99	2.39	3.58	3.04	3.12	57.58
2004	3.19	7.66	0.90	4.37	1.19	6.66	4.92	1.67	10.01	3.89	4.97	3.25	52.68
2005	3.33	2.31	9.05	7.04	1.67	7.47	9.44	11.71	1.62	0.03	3.15	4.81	61.63
2006	4.82	3.90	0.91	1.61	4.97	1.99	2.22	5.18	0.91	3.09	3.41	5.43	38.44
2007	5.99	2.45	1.10	0.99	1.57	3.97	3.94	4.18	1.27	4.79	1.89	4.03	36.17
2008	4.26	9.00	9.11	4.28	1.46	8.64	4.02	9.29	0.74	5.11	3.18	8.23	67.32
2009	2.33	3.26	7.11	7.73	9.17	2.78	3.88	3.19	5.22	3.39	2.35	9.57	59.98
2010	7.53	3.99	3.41	4.01	5.09	2.92	2.31	0.84	1.33	0.22	5.82	0.63	38.10
2011	4.33	4.04	5.00	0.92	0.78	1.66	5.11	1.87	2.26	1.84	1.94	3.75	33.50
2012	3.79	7.49	5.94	3.17	1.42	7.35	5.05	14.35	5.17	1.75	1.30	4.10	60.88
2013	1.05	12.86	2.99	3.54	0.64	3.72	13.39	13.17	2.14	1.96	3.91	4.44	63.81
2014	2.15	4.99	7.70	13.18	4.03	2.32	5.69	2.55	6.03	2.03	5.93	5.32	61.92
2015	3.4	3.8	2.17	9.52	3.55	4.04	4.85	2.75	4.15	1.00	7.33	8.67	55.23
2016	4.8	3.51	8.15	4.94	1.74	3.49	2.79	7.28	4.19	0.22	0.8	12.33	54.24
2017	7.28	3.78	2.11	2.12	4.28	11.53	6.82	4.47	3.75	0.97	0.2	2.76	50.07
2018	4.26	10.50	5.38	3.72	5.06	7.97	5.99	5.67	2.67	5.66	6.94	11.86	75.68
2019	6.53	2.76	3.43	3.94	1.78	3.62	6.36	4.15	0.31	6.43	1.74	6.95	48.00

Deviation from the Average Monthly Rainfall													
Inches	1.60	-2.34	-1.95	-0.38	-1.73	-1.33	0.21	-1.11	-4.00	3.65	-1.64	2.53	-6.49
Monthly Average Rainfall, 1952-2019													
AVG.	4.93	5.10	5.38	4.32	3.51	4.95	6.15	5.26	4.31	2.78	3.38	4.42	54.49
% of Annual Rainfall Occurring each Month													
	9.1%	9.4%	9.9%	7.9%	6.4%	9.1%	11.3%	9.6%	7.9%	5.1%	6.2%	8.1%	
Record High/Low for the Month													
LOW	0.75	0.82	0.84	0.13	0.09	1.07	1.19	0.84	0.31	0.00	0.20	0.25	28.68
HIGH	13.62	12.86	11.54	13.18	10.03	12.90	13.71	14.35	16.84	9.61	8.14	15.31	80.56



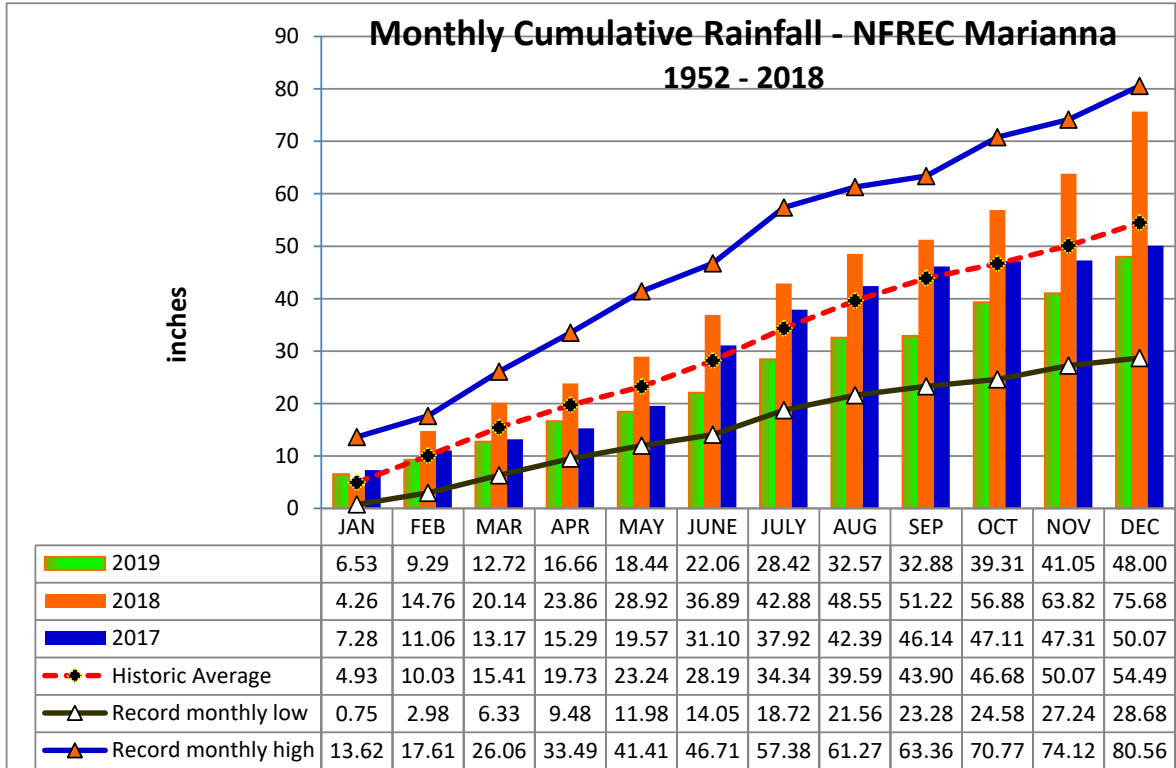
Jackson County
Monthly Cumulative Rainfall, 1952 -2018
North Florida Research & Education Center Marianna, FL



YEAR	JAN	FEB	MAR	APR	MAY	JUNE	JULY	AUG	SEP	OCT	NOV	DEC
1952	1.14	10.02	14.50	16.61	21.74	22.86	28.81	37.62	40.71	41.36	44.62	48.04
1953	4.84	12.10	15.13	23.56	25.99	29.96	36.80	38.43	44.76	45.41	49.50	64.81
1954	1.33	4.82	7.44	10.02	11.98	15.44	18.72	21.56	23.28	24.58	27.24	28.68
1955	3.66	5.49	6.33	12.13	15.16	16.78	23.53	27.28	29.72	31.82	32.54	33.31
1956	3.59	8.77	12.54	14.58	18.61	24.06	32.58	36.67	43.11	48.19	48.47	51.81
1957	0.75	3.40	8.57	14.31	18.91	24.66	34.49	40.40	57.24	58.55	64.79	67.01
1958	4.48	8.09	12.82	20.04	25.61	31.61	40.00	43.45	47.13	49.01	50.76	53.08
1959	3.67	10.73	19.23	24.96	31.91	35.68	40.51	44.18	47.25	55.18	55.39	56.92
1960	3.36	10.44	13.85	20.65	23.85	28.60	33.57	38.37	44.59	46.59	47.06	49.41
1961	4.23	8.38	12.02	17.59	21.56	25.97	29.96	41.05	43.65	43.65	46.49	52.72
1962	1.72	4.52	12.65	15.93	18.79	22.46	30.43	36.50	39.57	42.39	47.55	49.22
1963	7.31	10.33	13.51	14.87	18.37	26.36	31.52	33.02	38.27	38.28	42.50	48.55
1964	10.80	17.61	24.02	33.49	35.72	41.40	50.62	53.69	61.16	70.77	74.12	80.56
1965	2.63	8.72	14.23	18.19	18.37	27.97	31.23	35.41	39.89	43.30	45.11	48.71
1966	5.56	15.40	17.97	18.74	24.54	27.67	30.92	40.74	45.83	47.24	49.27	53.89
1967	8.27	11.59	13.78	13.91	16.52	23.54	30.03	33.61	35.01	36.87	39.27	47.25
1968	1.28	3.58	6.98	9.48	12.87	14.05	19.50	24.11	27.10	28.51	33.62	38.96
1969	1.68	5.17	12.25	16.79	19.80	21.51	34.69	37.74	43.38	44.88	46.10	49.90
1970	4.16	13.36	22.22	24.05	25.86	29.55	34.59	42.60	43.09	47.49	49.70	52.83
1971	1.97	8.08	15.23	18.40	21.43	25.28	30.48	37.24	39.71	41.55	43.49	47.19
1972	3.62	9.65	16.06	16.44	19.31	28.20	31.98	37.37	39.51	41.95	45.24	49.01
1973	8.14	15.85	24.23	31.83	38.70	42.33	53.45	57.96	63.36	63.63	67.27	72.60
1974	5.24	11.04	13.70	17.10	20.88	22.44	25.73	33.74	38.42	39.26	41.40	44.29
1975	10.21	16.57	21.48	31.83	35.80	39.90	53.61	59.01	62.82	67.17	70.06	73.34
1976	6.99	8.49	13.38	15.25	24.14	27.22	30.25	33.72	39.19	45.37	51.09	55.06
1977	3.47	5.28	11.80	12.68	13.28	19.64	23.19	28.41	38.24	40.83	48.97	53.16
1978	7.28	10.56	17.81	22.46	29.19	32.98	40.23	45.13	46.11	46.31	52.32	55.97
1979	7.30	15.08	18.34	26.09	32.31	33.62	41.11	47.41	58.92	59.45	63.92	66.76
1980	6.58	9.54	21.08	30.37	34.87	38.37	44.24	46.77	51.33	56.04	57.56	57.81
1981	1.70	7.02	12.96	15.99	18.72	23.46	27.48	30.01	32.45	34.20	35.05	39.99
1982	4.17	9.78	12.69	18.62	24.01	27.01	34.52	38.94	44.94	47.59	49.93	59.07
1983	4.92	11.76	20.29	28.17	30.44	36.10	37.29	39.82	48.79	52.31	58.21	65.86
1984	5.49	10.50	19.12	25.41	27.91	33.22	45.23	50.99	51.31	52.91	54.54	55.34
1985	4.60	9.06	11.66	12.84	17.28	22.96	26.64	32.22	33.64	41.06	48.97	54.31
1986	5.68	15.95	19.16	19.99	22.25	24.10	26.85	30.97	33.32	35.54	39.94	45.62
1987	8.62	14.14	21.37	21.77	26.23	31.66	37.17	41.35	43.62	43.68	47.70	48.51
1988	5.57	11.97	20.38	23.07	23.35	24.42	29.85	33.83	39.36	41.34	44.62	45.85
1989	1.59	4.33	9.29	12.92	19.93	32.83	44.02	47.08	50.44	57.64	62.35	67.80
1990	5.26	9.83	14.38	17.38	20.60	24.62	28.27	31.18	32.03	33.37	34.30	37.72
1991	13.62	17.06	26.06	31.38	41.41	46.71	57.38	61.27	62.80	63.97	65.57	68.57
1992	8.37	14.66	22.58	25.08	26.49	37.65	46.34	53.06	56.25	58.33	65.73	68.66
1993	12.00	15.38	22.79	24.29	25.89	30.07	36.75	40.64	44.08	46.98	49.25	52.88
1994	8.64	11.17	17.42	21.76	23.58	34.99	45.94	55.02	61.46	69.08	71.61	75.40
1995	5.23	8.36	12.65	17.00	20.90	26.46	29.48	35.64	36.50	44.01	48.13	49.91
1996	3.64	9.63	18.10	23.86	25.36	30.79	33.62	47.90	53.22	57.03	59.04	62.69

YEAR	JAN	FEB	MAR	APR	MAY	JUNE	JULY	AUG	SEP	OCT	NOV	DEC
1997	6.68	11.97	14.60	24.68	30.59	37.00	42.73	47.38	51.16	53.26	60.11	68.55
1998	6.28	14.58	20.69	22.93	24.38	26.73	31.10	33.30	49.61	49.91	51.96	53.94
1999	6.95	9.85	13.46	14.96	21.67	30.66	39.30	43.32	47.65	50.78	54.34	56.84
2000	3.78	8.74	13.22	17.27	17.36	21.36	24.76	31.91	39.11	39.82	44.25	47.46
2001	2.16	2.98	12.98	14.97	17.49	25.73	30.39	38.60	40.50	42.01	43.71	44.49
2002	3.82	6.26	11.77	17.55	19.74	23.19	33.53	36.83	48.66	56.02	63.78	69.77
2003	2.30	9.33	17.51	22.40	25.51	31.62	39.46	45.45	47.84	51.42	54.46	57.58
2004	3.19	10.85	11.75	16.12	17.31	23.97	28.89	30.56	40.57	44.46	49.43	52.68
2005	3.33	5.64	14.69	21.73	23.40	30.87	40.31	52.02	53.64	53.67	56.82	61.63
2006	4.82	8.72	9.63	11.24	16.21	18.20	20.42	25.60	26.51	29.60	33.01	38.44
2007	5.99	8.44	9.54	10.53	12.10	16.07	20.01	24.19	25.46	30.25	32.14	36.17
2008	4.26	13.26	22.37	26.65	28.11	36.75	40.77	50.06	50.80	55.91	59.09	67.32
2009	2.33	5.59	12.70	20.43	29.60	32.38	36.26	39.45	44.67	48.06	50.41	59.98
2010	7.53	11.52	14.93	18.94	24.03	26.95	29.26	30.10	31.43	31.65	37.47	38.10
2011	4.33	8.37	13.37	14.29	15.07	16.73	21.84	23.71	25.97	27.81	29.75	33.50
2012	3.79	11.28	17.22	20.39	21.81	29.16	34.21	48.56	53.73	55.48	56.78	60.88
2013	1.05	13.91	16.90	20.44	21.08	24.80	38.19	51.36	53.50	55.46	59.37	63.81
2014	2.15	7.14	14.84	28.02	32.05	34.37	40.06	42.61	48.64	50.67	56.60	61.92
2015	3.40	7.20	9.37	18.89	22.44	26.48	31.33	34.08	38.23	39.23	46.56	55.23
2016	4.80	8.31	16.46	21.40	23.14	26.63	29.42	36.70	40.89	41.11	41.91	54.24
2017	7.28	11.06	13.17	15.29	19.57	31.10	37.92	42.39	46.14	47.11	47.31	50.07
2018	4.26	14.76	20.14	23.86	28.92	36.89	42.88	48.55	51.22	56.88	63.82	75.68
2019	6.53	9.29	12.72	16.66	18.44	22.06	28.42	32.57	32.88	39.31	41.05	48.00

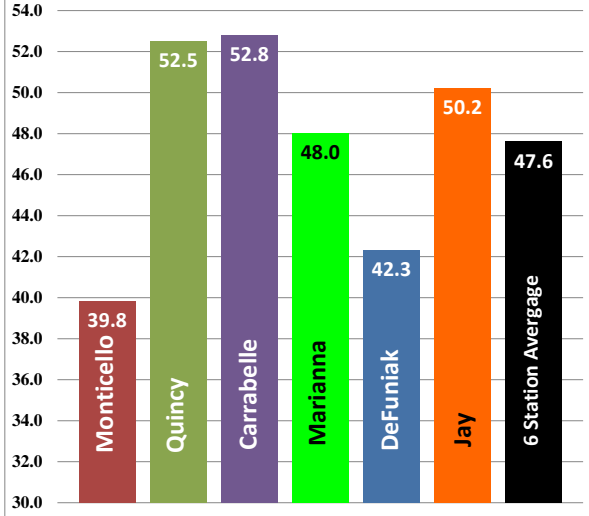
Deviation from the Average Accumulation												
Inches	1.60	-0.74	-2.69	-3.07	-4.80	-6.13	-5.92	-7.02	-11.02	-7.37	-9.02	-6.49
Average Accumulation, 1952-2018												
Inches	4.93	10.03	15.41	19.73	23.24	28.19	34.34	39.59	43.90	46.68	50.07	54.49
Record High/Low Accumulation												
LOW	0.75	2.98	6.33	9.48	11.98	14.05	18.72	21.56	23.28	24.58	27.24	28.68
HIGH	13.62	17.61	26.06	33.49	41.41	46.71	57.38	61.27	63.36	70.77	74.12	80.56



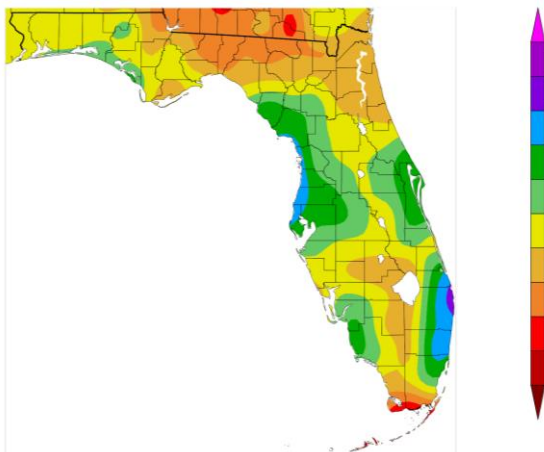
2019 UF/IFAS FAWN Panhandle Weather Station Summary

FAWN Station	Data	Jan	Feb	Mar	Apr	May	June	July	Aug	Sept	Oct	Nov	Dec	Total
Monticello	Rain	4.5	1.4	4.6	2.1	1.5	5.8	5.4	3.4	1.4	5.4	1.2	3.3	39.8
	Hist Avg	4.5	4.6	6.1	4.1	3.4	5.7	7.0	6.9	5.4	3.6	3.1	3.7	58.1
	Deviation	0.0	-3.2	-1.5	-2.0	-2.0	0.0	-1.6	-3.5	-4.0	1.8	-1.9	-0.4	-18.3
Quincy	Rain	4.6	1.1	2.8	6.1	2.4	4.6	8.5	12.0	0.1	4.7	1.0	4.4	52.5
	Hist Avg	5.0	4.3	5.6	3.7	4.2	5.2	6.3	6.2	4.1	3.4	3.3	3.7	55.0
	Deviation	-0.4	-3.2	-2.8	2.4	-1.8	-0.6	2.2	5.8	-4.0	1.3	-2.3	0.7	-2.5
Carrabelle	Rain	3.4	2.1	2.9	4.6	0.8	8.6	10.2	11.1	0.7	5.0	0.8	2.6	52.8
	Hist Avg	3.8	3.7	4.9	3.0	2.7	5.3	7.3	7.9	7.3	3.7	3.2	3.0	55.8
	Deviation	-0.4	-1.6	-2.0	1.6	-1.9	3.3	2.9	3.2	-6.6	1.3	-2.4	-0.4	-3.0
Marianna	Rain	6.5	2.8	3.4	3.9	1.8	3.6	6.4	4.2	0.3	6.4	1.7	7.0	48.0
	Hist Avg	4.9	5.1	5.4	4.3	3.5	4.9	6.2	5.3	4.3	2.8	3.4	4.4	54.5
	Deviation	1.6	-2.3	-1.9	-0.4	-1.7	-1.3	0.2	-1.1	-4.0	3.6	-1.6	2.5	-6.5
DeFuniak	Rain	3.9	1.7	3.2	4.3	2.4	3.4	3.8	5.5	0.1	6.1	0.7	7.5	42.3
	Hist Avg	4.9	5.4	5.6	3.9	4.5	7.1	7.2	6.3	5.7	3.7	4.8	4.5	63.7
	Deviation	-1.1	-3.7	-2.4	0.4	-2.2	-3.7	-3.4	-0.9	-5.6	2.4	-4.2	3.0	-21.4
Jay	Rain	3.3	1.8	2.0	5.5	3.2	5.6	3.7	7.4	0.0	10.7	0.8	6.2	50.2
	Hist Avg	5.5	5.3	6.6	4.8	4.8	5.8	7.0	6.2	5.5	3.3	5.1	4.7	64.6
	Deviation	-2.2	-3.5	-4.6	0.7	-1.6	-0.2	-3.3	1.2	-5.5	7.4	-4.3	1.5	-14.4
6 Station Average		4.4	1.8	3.2	4.4	2.0	5.3	6.3	7.3	0.4	6.4	1.0	5.1	47.6
6 Station Historic Average		4.8	4.7	5.7	4.0	3.9	5.7	6.8	6.5	5.4	3.4	3.8	4.0	58.6
6 Station Deviation from Avg		-0.4	-2.9	-2.5	0.5	-1.8	-0.4	-0.5	0.8	-4.9	2.9	-2.8	1.1	-11.0

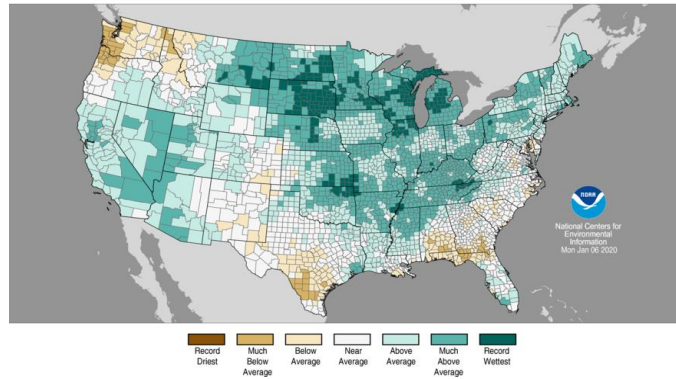
2019 Panhandle FAWN Rainfall Totals



Precipitation (in) 1/1/2019 – 12/31/2019



County Precipitation Ranks January–December 2019 Period: 1895–2019



Source: <https://www.ncdc.noaa.gov/temp-and-precip/us-maps/3/201902>

Source: NOAA Regional Climate Center - <https://hrcc.unl.edu/maps.php?map=ACISClimateMaps>

County Average Temperature Ranks January–December 2019 Period: 1895–2019

