



## Jackson County 2022 Weather Data

*71 Years of Weather Data Recorded at the UF/IFAS Marianna North Florida Research and Education Center*



**Doug Mayo**  
**Jackson County Extension Director**

1952-2008 Rainfall Data compiled by  
Ed Jowers, Emeritus County Extension Director

Data provided by Florida Automated Weather Station (FAWN)  
UF/IFAS North Florida Research and Education Center  
Greenwood, Florida



<http://fawn.ifas.ufl.edu/>

Tower Name	Tower Number	Latitude Degree, Minutes	Latitude Degrees, Minutes, Seconds	Latitude Degrees Decimal	Longitude Degree, Minutes	Longitude Degrees, Minutes, Seconds	Longitude Degrees Decimal	Elevation Feet
Marianna	130.00	N 30°51.000'	N 30°50'00.00"	N 30.85000°	-85°09.910'	-85°09'54.60"	-85.16516°	115'

## 2022 UF/IFAS FAWN Marianna Weather Summary

Month	Rainfall Inches	Dev from Hist Avg	6' Air Temp			Soil Temp			Wind MPH	
			High	Low	Avg	High	Low	Avg	Avg	High
January	5.24	0.31	82	24	49	75	39	53	5.8	48.7
February	1.14	-3.94	83	30	56	74	45	59	5.5	30.8
March	11.24	5.85	85	30	63	83	48	66	5.9	50.0
April	5.77	1.37	86	43	67	86	58	71	5.5	40.1
May	7.84	4.30	93	56	75	94	69	80	4.5	38.3
June	1.62	-3.33	100	68	82	102	77	88	4.1	38.0
July	5.80	-0.34	96	70	81	102	78	86	3.7	31.7
August	4.78	-0.58	94	70	79	97	78	85	3.1	32.1
September	0.50	-3.89	96	56	77	96	74	84	3.9	29.9
October	2.13	-0.67	89	35	66	86	60	73	3.9	27.3
November	2.83	-0.48	88	30	62	78	49	65	5.0	35.1
December	1.90	-2.49	82	18	55	73	39	58	4.6	35.8
<b>2022</b>	<b>50.79</b>	<b>-3.89</b>	<b>100</b>	<b>18</b>	<b>68</b>	<b>102</b>	<b>39</b>	<b>72</b>	<b>4.6</b>	<b>50</b>

Total days <32°

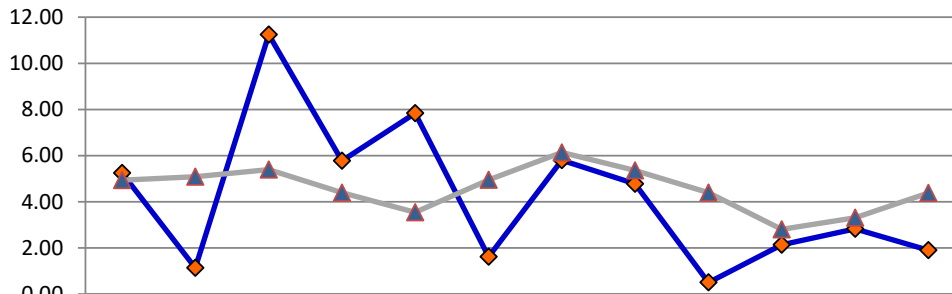
16

Total days >95°

14

Data source: UF/IFAS Florida Automated Weather Network Marianna Station

### Monthly Rainfall @ Marianna FAWN

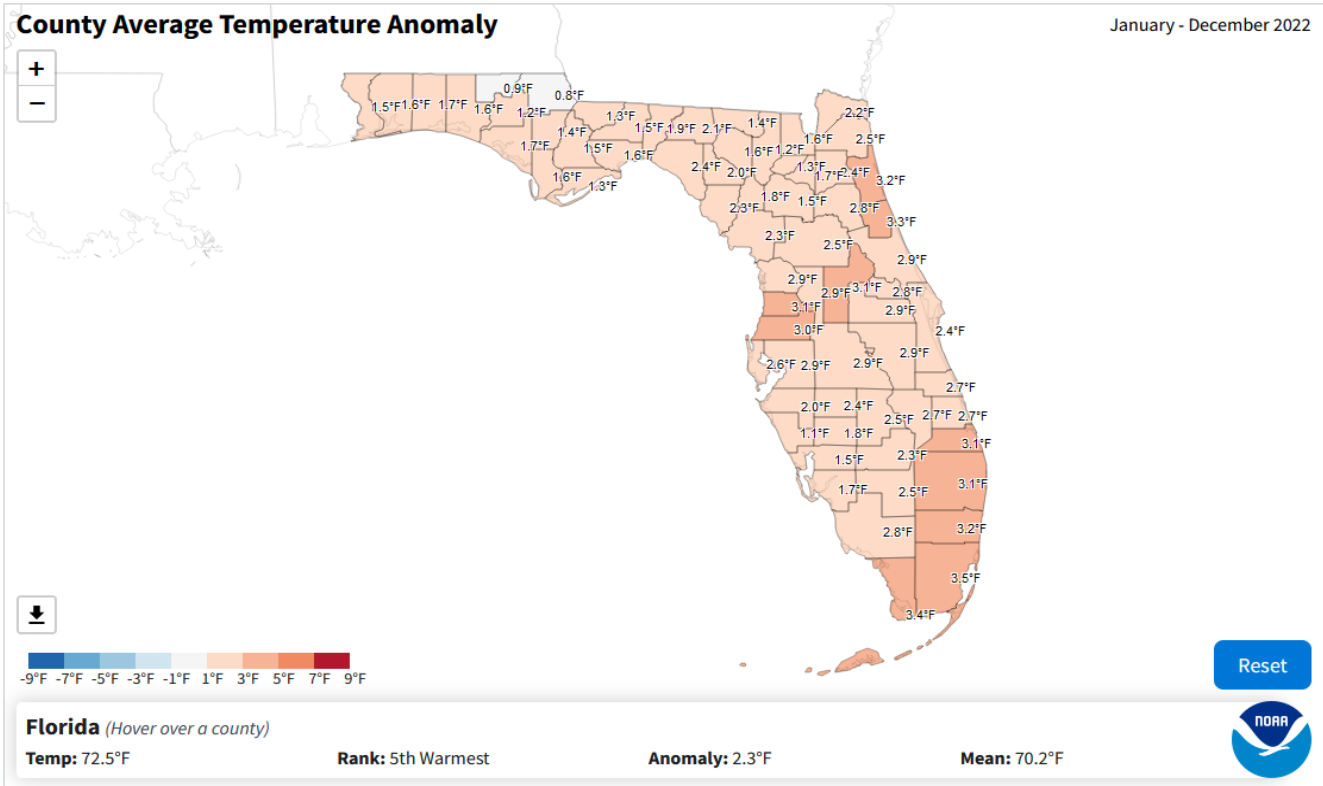


	JAN	FEB	MAR	APR	MAY	JUNE	JULY	AUG	SEP	OCT	NOV	DEC
2022	5.24	1.14	11.24	5.77	7.84	1.62	5.80	4.78	0.50	2.13	2.83	1.90
Historic Avg	4.93	5.08	5.39	4.40	3.54	4.95	6.14	5.36	4.39	2.80	3.31	4.39

◆ 2022    ▲ Historic Avg

## Annual Average Jackson Co. 6ft Air Temperature by Year

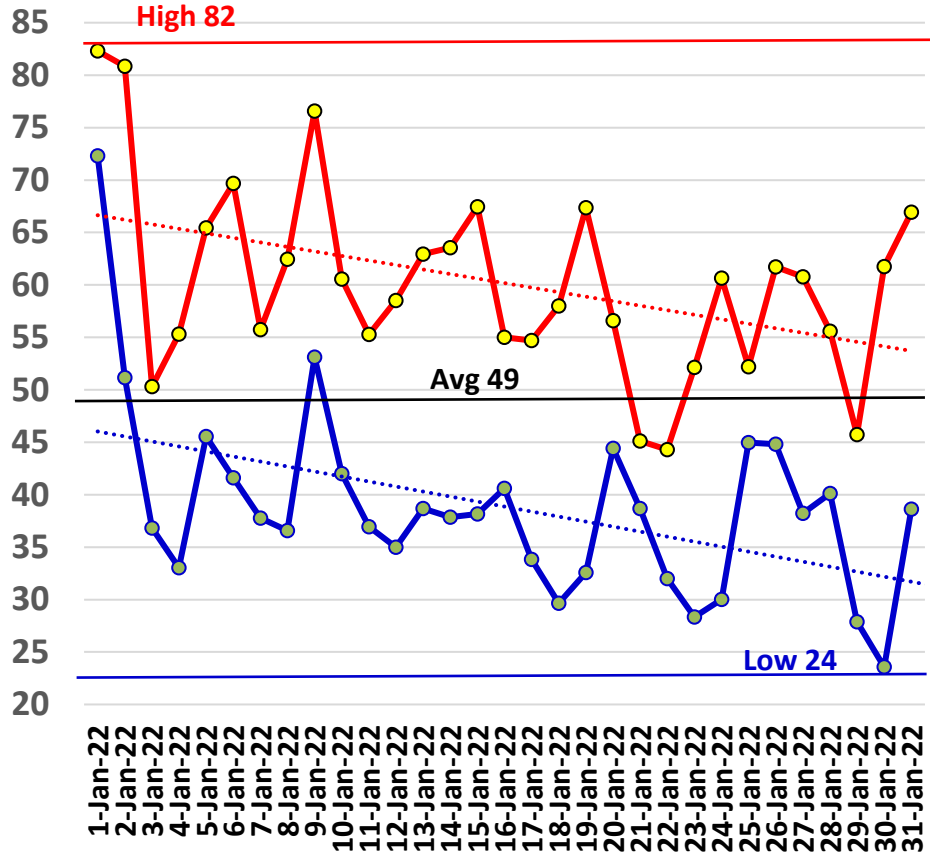
	2022	2021	2020	2019	2018	2017	2016	2015	2014	2013
Marianna FAWN	68	68	69	70	67	68	68	68	65	67
NOAA Avg	66.9	66.9	66.9	66.9	66.9	66.9	66.9	66.9	66.9	66.9
Deviation	1.1	1.1	2.1	3.1	0.1	1.1	1.1	1.1	-1.9	0.1
NOAA	67.7	67.9	69.3	69.6	68.6	69.2	68.7	69.1	66	67
NOAA Avg	66.9	66.9	66.9	66.9	66.9	66.9	66.9	66.9	66.9	66.9
Deviation	0.8	1	2.4	2.7	1.7	2.3	1.8	2.2	-0.9	0.1



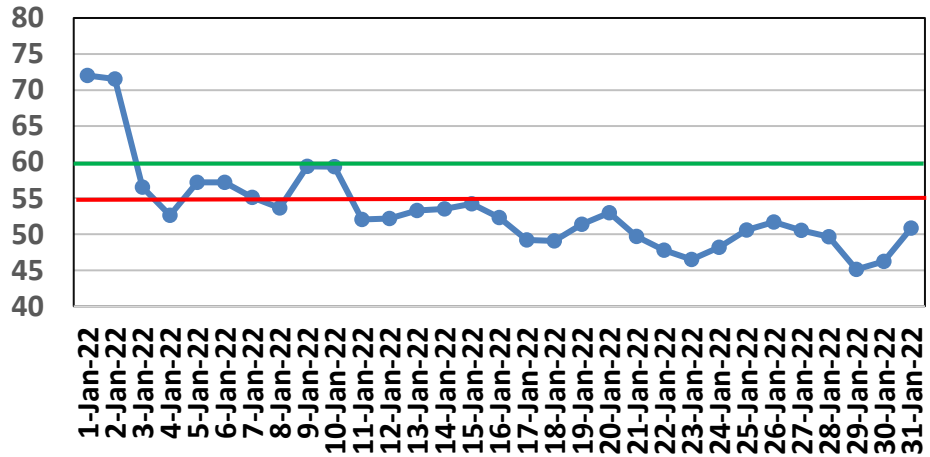
# January Daily Weather Data

Date	Temperature						Precipitation		Wind		
	Air Temp 6 ft			Soil Temp 4 inch			Rain	Evapo Transpo	Avg Wind	Min Wind	Max Wind
	Avg	Min	Max	Avg	Min	Max	Inches	Inches	mph	mph	mph
1-Jan-22	76	72	82	72	70	75	0.00	0.08	8.7	0.7	28.1
2-Jan-22	72	51	81	72	67	75	1.43	0.07	10.4	0.1	48.7
3-Jan-22	41	37	50	57	51	66	0.00	0.04	11.3	0.9	38.2
4-Jan-22	44	33	55	53	48	57	0.04	0.04	2.8	0.0	10.9
5-Jan-22	54	46	65	57	54	62	0.00	0.05	3.5	0.0	23.0
6-Jan-22	55	42	70	57	52	61	0.31	0.06	5.0	0.1	25.5
7-Jan-22	45	38	56	55	51	59	0.00	0.04	5.4	0.0	23.5
8-Jan-22	49	37	62	54	48	59	0.00	0.04	2.2	0.0	11.3
9-Jan-22	64	53	77	59	54	64	0.65	0.06	5.4	0.0	34.7
10-Jan-22	54	42	61	59	52	62	0.00	0.05	7.2	0.1	21.2
11-Jan-22	44	37	55	52	48	57	0.00	0.04	4.6	0.1	18.9
12-Jan-22	47	35	59	52	48	57	0.00	0.04	2.5	0.0	11.3
13-Jan-22	50	39	63	53	49	58	0.00	0.04	5.4	0.0	18.8
14-Jan-22	50	38	64	53	49	59	0.00	0.04	3.0	0.0	10.0
15-Jan-22	53	38	67	54	49	59	1.64	0.05	7.5	0.1	34.6
16-Jan-22	45	41	55	52	48	56	0.32	0.05	15.1	1.6	37.9
17-Jan-22	43	34	55	49	45	55	0.00	0.04	9.7	0.3	24.6
18-Jan-22	42	30	58	49	43	56	0.00	0.04	1.8	0.0	10.6
19-Jan-22	49	33	67	51	45	59	0.00	0.05	3.4	0.0	11.7
20-Jan-22	52	44	57	53	51	55	0.26	0.05	5.3	0.0	21.8
21-Jan-22	41	39	45	50	48	52	0.09	0.04	7.4	0.1	18.0
22-Jan-22	40	32	44	48	45	49	0.01	0.04	6.0	0.0	17.1
23-Jan-22	38	28	52	46	41	53	0.00	0.04	3.8	0.1	17.5
24-Jan-22	45	30	61	48	42	55	0.00	0.05	2.7	0.0	13.1
25-Jan-22	48	45	52	51	49	52	0.49	0.04	2.4	0.0	12.5
26-Jan-22	51	45	62	52	49	56	0.00	0.06	6.1	0.1	19.6
27-Jan-22	47	38	61	51	46	57	0.00	0.05	3.1	0.0	13.8
28-Jan-22	46	40	56	50	46	54	0.00	0.05	6.4	0.0	25.3
29-Jan-22	37	28	46	45	41	50	0.00	0.05	9.8	0.0	27.3
30-Jan-22	44	24	62	46	39	54	0.00	0.06	4.9	0.0	26.8
31-Jan-22	52	39	67	51	45	58	0	0.07	4.0	0.0	16.5
<b>High</b>			<b>82</b>			<b>75</b>		<b>High</b>			<b>48.7</b>
<b>Low</b>		<b>24</b>			<b>39</b>			<b>Low</b>		<b>0.0</b>	
<b>Average</b>	<b>49</b>	39	60	<b>53</b>	49	58		<b>Average</b>	<b>5.8</b>		
Days over 95 <sup>u</sup>				0		<b>Total for Month</b>		<b>5.24</b>	<b>1.52</b>		
						<b># of Rain Days</b>		10			
						<b>Historic Average</b>		4.93			
Days below 32 <sup>v</sup>				5		<b>Deviation from Avg</b>		0.31			
<b>Net Gain/loss (Rain - ET)</b>								<b>3.72</b>			

## Jan Marianna FAWN 6' Air Temps



## January Avg Soil Temps Marianna

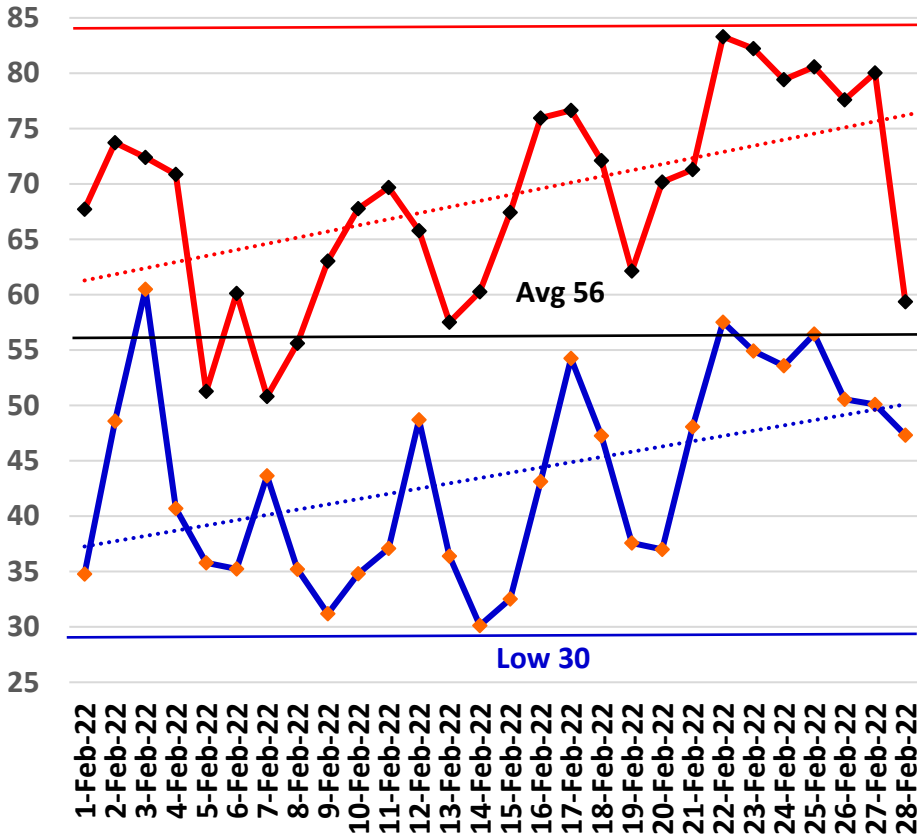


Corn

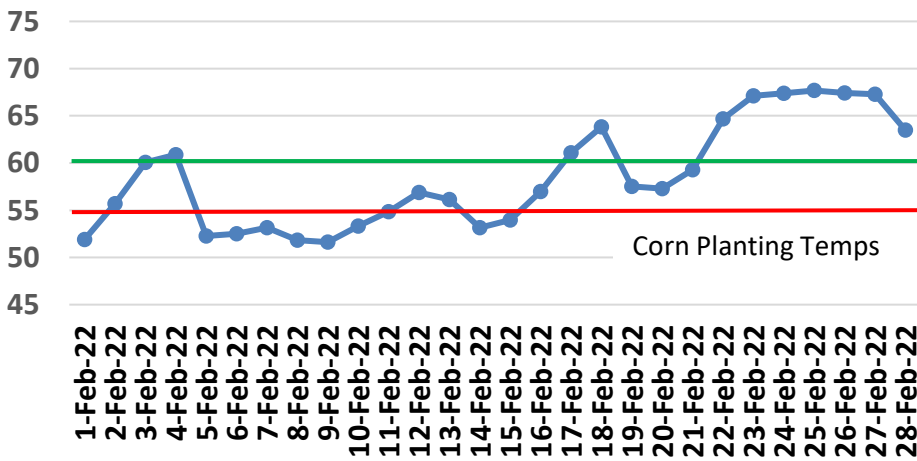
# February Daily Weather Data

Temperature							Precipitation		Wind			
Date	Air Temp 6 ft			Soil Temp 4 inch			Rain	Evapo Trans	Avg Wind	Min Wind	Max Wind	
	Avg	Min	Max	Avg	Min	Max	Inches	Inches	mph	mph	mph	
1-Feb-22	51	35	68	52	46	59	0.00	0.07	5.1	0.0	19.5	
2-Feb-22	61	49	74	56	51	61	0.00	0.08	8.8	0.2	28.6	
3-Feb-22	68	60	72	60	57	63	0.00	0.06	10.8	2.4	27.8	
4-Feb-22	57	41	71	61	54	64	0.95	0.07	9.5	0.2	27.4	
5-Feb-22	42	36	51	52	49	57	0.01	0.06	8.0	0.1	23.4	
6-Feb-22	47	35	60	53	46	60	0.00	0.06	3.3	0.0	16.3	
7-Feb-22	47	44	51	53	52	55	0.10	0.04	3.7	0.1	11.9	
8-Feb-22	46	35	56	52	49	56	0.00	0.06	3.8	0.0	13.8	
9-Feb-22	47	31	63	52	45	60	0.00	0.07	2.9	0.0	13.7	
10-Feb-22	51	35	68	53	47	61	0.00	0.07	2.6	0.0	11.1	
11-Feb-22	53	37	70	55	48	62	0.00	0.08	2.8	0.0	14.4	
12-Feb-22	56	49	66	57	53	61	0.00	0.06	1.9	0.0	10.9	
13-Feb-22	50	36	58	56	51	60	0.00	0.07	8.8	0.1	27.8	
14-Feb-22	45	30	60	53	47	60	0.00	0.07	3.4	0.0	15.0	
15-Feb-22	50	33	67	54	48	61	0.00	0.08	5.5	0.0	27.0	
16-Feb-22	59	43	76	57	51	63	0.00	0.09	5.9	0.1	24.8	
17-Feb-22	67	54	77	61	56	65	0.01	0.09	10.6	0.1	30.8	
18-Feb-22	60	47	72	64	59	67	0.07	0.09	8.5	0.5	24.5	
19-Feb-22	48	38	62	58	53	63	0.00	0.08	7.4	0.1	25.8	
20-Feb-22	53	37	70	57	51	65	0.00	0.09	2.8	0.0	16.8	
21-Feb-22	60	48	71	59	55	63	0.00	0.07	2.8	0.0	12.0	
22-Feb-22	69	58	83	65	60	71	0.00	0.12	6.0	0.0	24.9	
23-Feb-22	68	55	82	67	62	74	0.00	0.11	3.5	0.1	14.8	
24-Feb-22	67	54	79	67	62	73	0.00	0.10	4.4	0.0	18.8	
25-Feb-22	68	56	81	68	64	73	0.00	0.09	5.1	0.1	16.6	
26-Feb-22	63	51	78	67	62	74	0.00	0.11	4.3	0.0	13.3	
27-Feb-22	63	50	80	67	62	74	0.00	0.11	5.8	0.0	21.4	
28-Feb-22	54	47	59	63	60	67	0.00	0.05	6.5	0.1	15.9	
<b>High</b>			<b>83</b>			<b>74</b>		<b>High</b>			<b>30.8</b>	
<b>Low</b>		<b>30</b>			<b>45</b>			<b>Low</b>		<b>0.0</b>		
<b>Average</b>	<b>56</b>	44	69	<b>59</b>	54	64		<b>Average</b>	<b>5.5</b>			
Days over 95 <sup>u</sup> 0				<b>Total for Month</b>			<b>1.14</b>	<b>2.20</b>	<b>Cumulative for Year</b>			
				<b># of Rain Days</b>			5			<b>Rain</b> 6.4		
Days below 32 <sup>u</sup> 2				<b>Historic Average</b>			5.08			<b>Avg</b> 10.0		
				<b>Deviation from Avg</b>			-3.94			<b>Dev</b> -3.6		
<b>Net Gain/loss (Rain - ET)</b>								<b>-1.06</b>		<b>Net</b> 2.7		

## February Marianna FAWN 6' Air Temps **High 83**



## February Avg Soil Temps Marianna

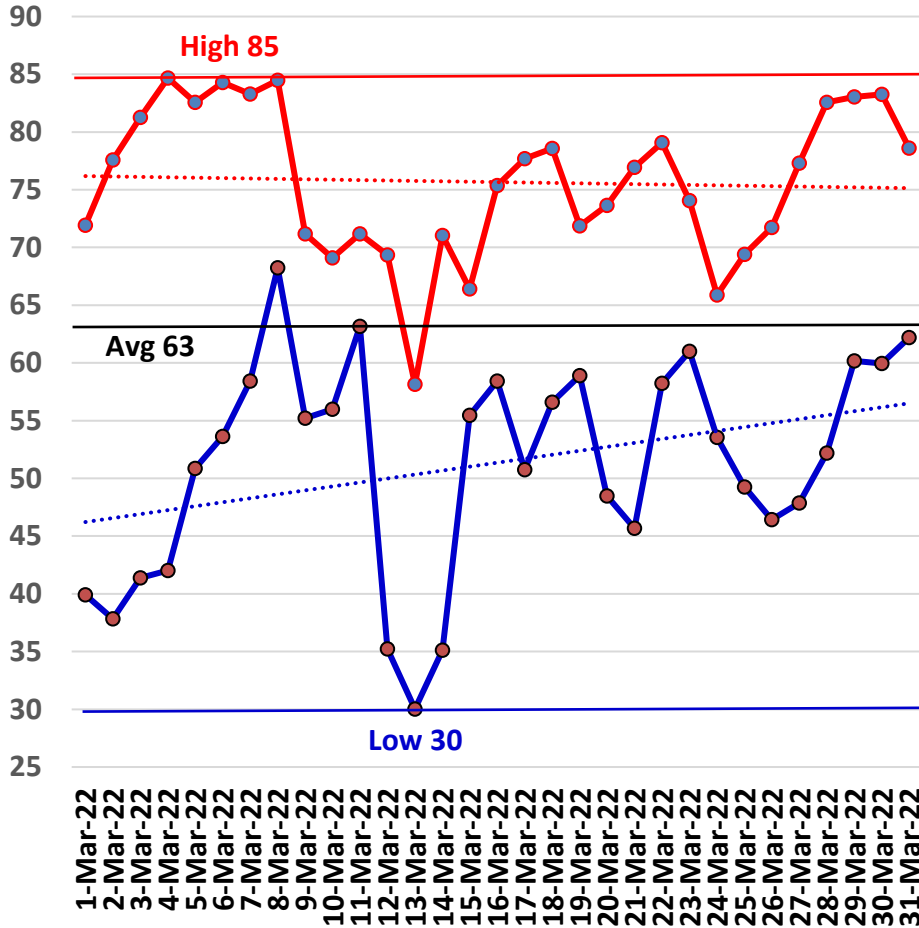


# March Daily Weather Data

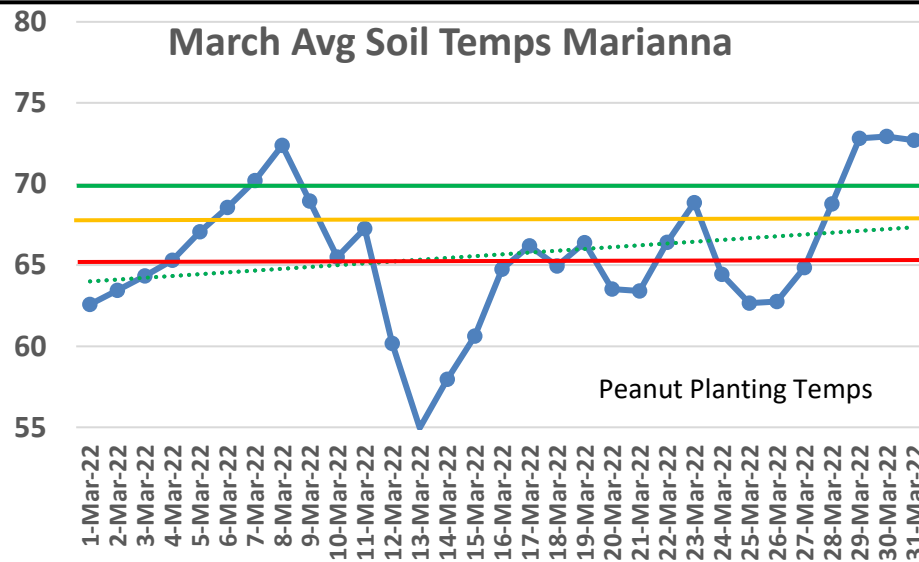
Date	Temperature						Precipitation		Wind		
	Air Temp 6 ft			Soil Temp 4 inch			Rain	Evapo Trans	Avg Wind	Min Wind	Max Wind
	Avg	Min	Max	Avg	Min	Max	Inches	Inches	mph	mph	mph
1-Mar-22	55	40	72	63	56	70	0.00	0.09	2.7	0.0	13.0
2-Mar-22	58	38	78	63	56	72	0.00	0.10	2.2	0.0	14.5
3-Mar-22	60	41	81	64	57	73	0.00	0.10	2.5	0.1	11.6
4-Mar-22	63	42	85	65	58	73	0.00	0.11	3.5	0.0	19.5
5-Mar-22	66	51	83	67	61	75	0.00	0.12	5.9	0.1	22.9
6-Mar-22	69	54	84	69	63	75	0.00	0.12	6.1	0.1	23.4
7-Mar-22	71	58	83	70	65	76	0.00	0.12	6.1	0.2	28.3
8-Mar-22	73	68	84	72	70	77	0.00	0.11	6.0	0.1	24.9
9-Mar-22	64	55	71	69	64	71	0.37	0.06	7.1	0.1	22.5
10-Mar-22	61	56	69	65	63	69	0.06	0.07	3.3	0.0	16.2
11-Mar-22	67	63	71	67	66	69	0.93	0.06	4.6	0.1	22.8
12-Mar-22	47	35	69	60	52	68	0.29	0.10	14.2	1.1	50.0
13-Mar-22	43	30	58	55	48	62	0.00	0.08	3.4	0.0	15.5
14-Mar-22	54	35	71	58	51	66	0.00	0.10	3.2	0.0	17.1
15-Mar-22	60	55	66	61	59	62	0.83	0.06	8.6	0.0	32.8
16-Mar-22	66	58	75	65	61	70	3.04	0.11	5.4	0.0	21.8
17-Mar-22	64	51	78	66	59	74	0.00	0.12	3.2	0.0	14.5
18-Mar-22	64	57	79	65	63	70	3.42	0.08	7.5	0.2	26.0
19-Mar-22	66	59	72	66	63	71	0.22	0.09	6.5	0.1	21.4
20-Mar-22	60	48	74	64	56	71	0.00	0.12	4.9	0.0	21.9
21-Mar-22	61	46	77	63	56	72	0.00	0.12	4.6	0.0	18.9
22-Mar-22	69	58	79	66	60	74	0.00	0.13	10.8	1.3	30.2
23-Mar-22	70	61	74	69	66	72	0.77	0.07	9.0	0.3	28.0
24-Mar-22	60	54	66	64	60	68	0.00	0.08	4.6	0.1	15.3
25-Mar-22	60	49	69	63	57	70	0.00	0.12	7.0	0.1	27.1
26-Mar-22	60	46	72	63	56	71	0.00	0.12	8.7	0.6	32.9
27-Mar-22	62	48	77	65	56	75	0.00	0.13	5.1	0.1	21.7
28-Mar-22	67	52	83	69	61	78	0.00	0.14	5.1	0.0	23.4
29-Mar-22	70	60	83	73	66	83	0.00	0.15	4.5	0.0	18.7
30-Mar-22	71	60	83	73	66	81	0.00	0.15	11.1	0.6	37.6
31-Mar-22	71	62	79	73	68	79	1.31	0.13	7.8	0.2	38.4
<b>High</b>			<b>85</b>			<b>83</b>					<b>50.0</b>
<b>Low</b>		<b>30</b>			<b>48</b>					<b>0.0</b>	
<b>Average</b>	<b>63</b>	51	76	<b>66</b>	60	72			<b>5.9</b>		
Days over 95 <sup>o</sup>			0	<b>Total for Month</b>			<b>11.24</b>	3.26	<b>Cumulative for Year</b>		
Days below 32 <sup>o</sup>			1	<b># of Rain Days</b>			10		<b>Rain</b>	17.6	
				<b>Historic Average</b>			5.39		<b>Avg</b>	15.4	
				<b>Deviation from Avg</b>			5.85		<b>Dev</b>	2.2	
				<b>Net Gain/loss (Rain - ET)</b>				<b>7.98</b>	<b>Net</b>	2.7	



## March Marianna FAWN 6' Air Temps



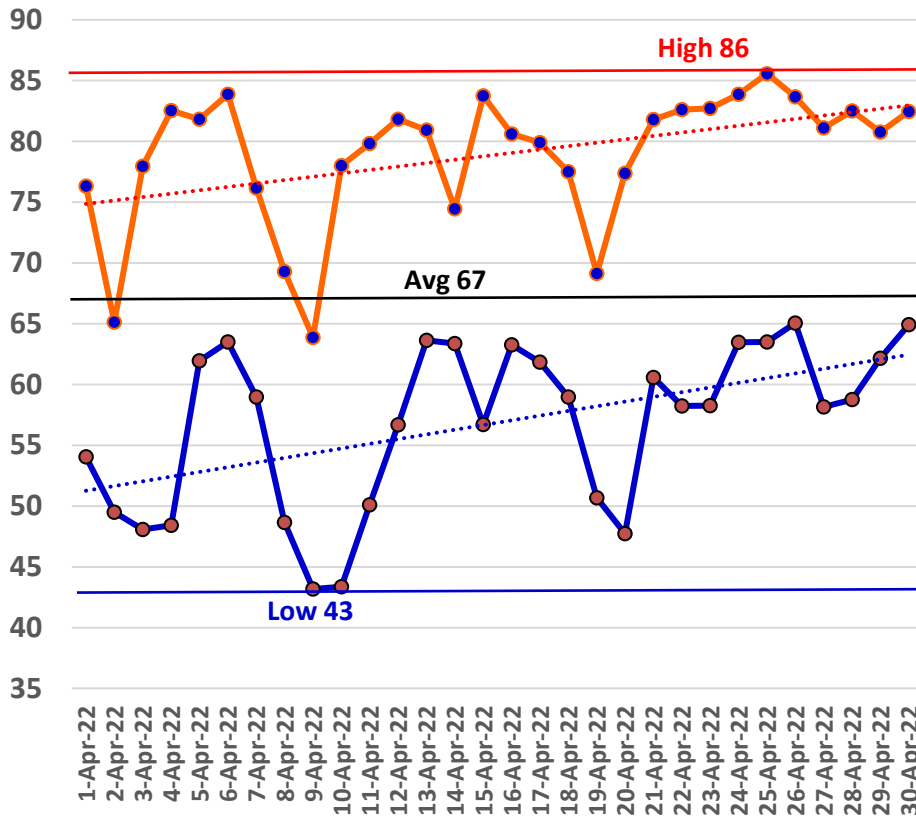
## March Avg Soil Temps Marianna



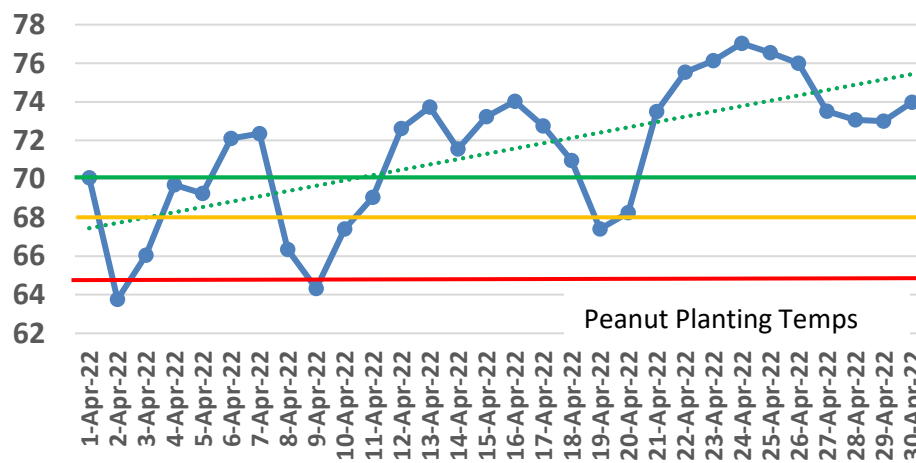
# April Daily Weather Data

Temperature							Precipitation		Wind			
	Air Temp 6 ft			Soil Temp 4 inch			Rain	Evapo Trans	Avg Wind	Min Wind	Max Wind	
Date	Avg	Min	Max	Avg	Min	Max	Inches	Inches	mph	mph	mph	
1-Apr-22	65	54	76	70	64	78	0.00	0.14	4.3	0.0	14.7	
2-Apr-22	57	49	65	64	62	67	0.00	0.06	2.3	0.0	10.4	
3-Apr-22	62	48	78	66	58	76	0.00	0.14	3.4	0.0	17.4	
4-Apr-22	66	48	83	70	60	81	0.00	0.14	2.5	0.0	11.5	
5-Apr-22	67	62	82	69	67	75	1.26	0.09	7.8	0.1	40.1	
6-Apr-22	75	64	84	72	67	78	0.03	0.12	8.0	0.3	31.5	
7-Apr-22	70	59	76	72	66	77	0.01	0.16	9.6	0.4	24.8	
8-Apr-22	59	49	69	66	59	75	0.00	0.14	10.6	0.5	35.9	
9-Apr-22	54	43	64	64	58	72	0.00	0.13	8.8	0.3	37.3	
10-Apr-22	61	43	78	67	58	79	0.00	0.14	3.8	0.1	23.3	
11-Apr-22	65	50	80	69	62	78	0.00	0.13	5.7	0.0	22.7	
12-Apr-22	71	57	82	73	65	81	0.00	0.15	5.3	0.1	19.0	
13-Apr-22	71	64	81	74	69	79	0.00	0.13	6.4	0.2	20.1	
14-Apr-22	68	63	74	72	69	75	0.10	0.09	4.3	0.0	23.1	
15-Apr-22	70	57	84	73	64	84	0.00	0.17	3.4	0.0	15.0	
16-Apr-22	71	63	81	74	69	81	0.58	0.11	4.4	0.0	27.4	
17-Apr-22	68	62	80	73	68	80	0.62	0.11	3.3	0.0	38.4	
18-Apr-22	68	59	78	71	67	77	1.66	0.13	8.1	0.1	23.8	
19-Apr-22	59	51	69	67	60	76	0.00	0.15	5.4	0.0	22.5	
20-Apr-22	63	48	77	68	60	78	0.00	0.15	5.7	0.0	24.6	
21-Apr-22	70	61	82	73	66	84	0.00	0.17	4.5	0.0	19.0	
22-Apr-22	71	58	83	76	67	86	0.00	0.17	4.2	0.0	22.4	
23-Apr-22	72	58	83	76	68	85	0.00	0.16	6.3	0.1	19.6	
24-Apr-22	73	63	84	77	70	85	0.00	0.16	6.5	0.0	19.2	
25-Apr-22	72	64	86	77	71	85	0.84	0.14	4.8	0.0	21.2	
26-Apr-22	71	65	84	76	71	84	0.65	0.14	4.3	0.0	34.4	
27-Apr-22	69	58	81	74	67	82	0.00	0.18	4.6	0.1	15.1	
28-Apr-22	71	59	83	73	66	81	0.00	0.17	5.0	0.0	19.0	
29-Apr-22	71	62	81	73	68	80	0.00	0.13	6.9	0.1	20.4	
30-Apr-22	72	65	82	74	69	81	0.02	0.13	6.4	0.0	23.8	
<b>High</b>			<b>86</b>			<b>86</b>					<b>40.1</b>	
<b>Low</b>		<b>43</b>			<b>58</b>					<b>0.0</b>		
<b>Average</b>	<b>67</b>	<b>57</b>	<b>79</b>	<b>71</b>	<b>65</b>	<b>79</b>			<b>5.5</b>			
Days over 95 <sup>u</sup>				0			<b>Total for Month</b>		<b>5.77</b>	4.13	<b>Cumulative for Year</b>	
							<b># of Rain Days</b>		10			
			<b>Historic Average</b>		4.40			<b>Avg</b>	19.8			
			<b>Deviation from Avg</b>		1.37			<b>Dev</b>	3.6			
Days below 32 <sup>u</sup>				0			<b>Net Gain/loss (Rain - ET)</b>		<b>1.64</b>		<b>Net</b>	2.7

## April Marianna FAWN 6' Air Temps



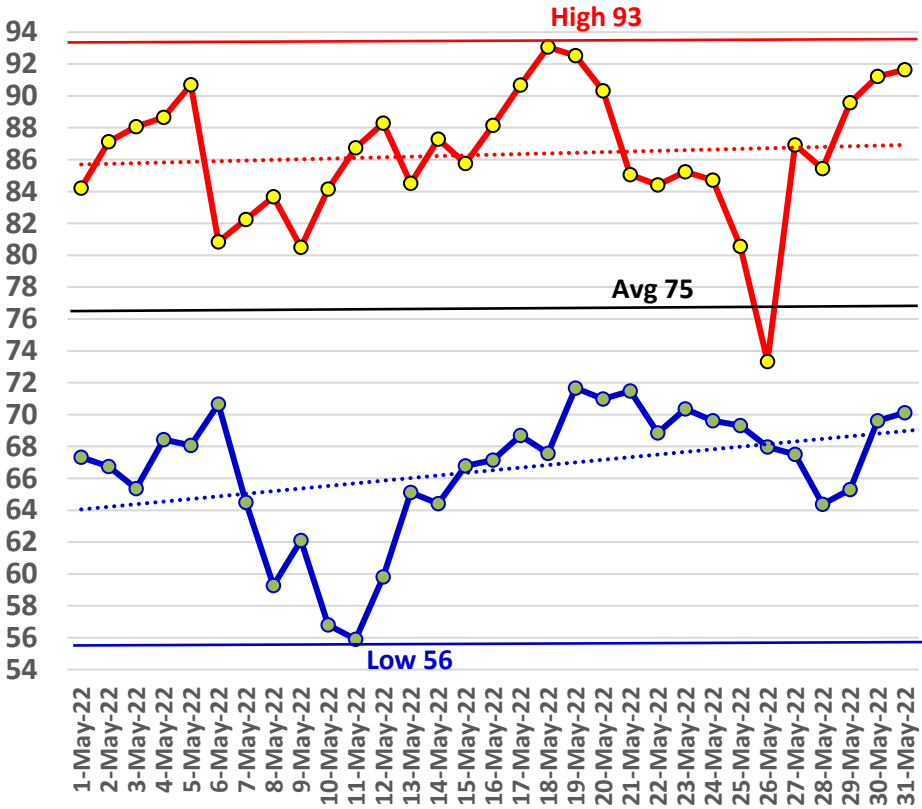
## April Avg Soil Temps Marianna



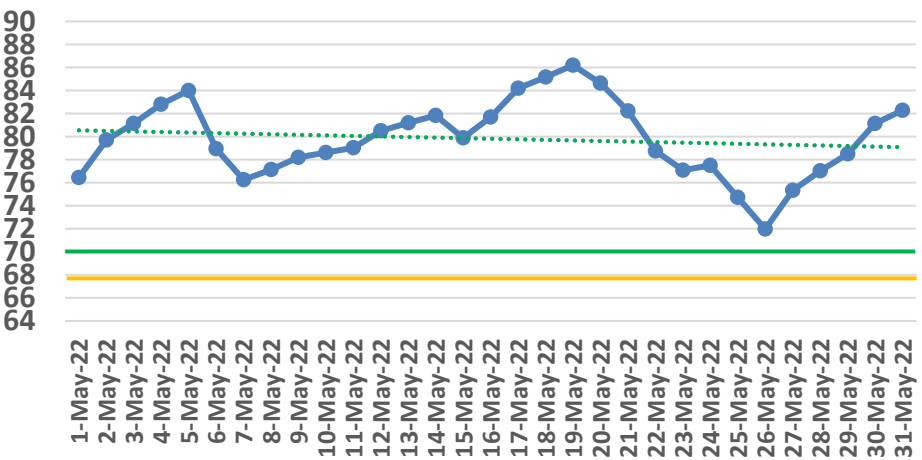
# May Daily Weather Data

Date	Temperature						Precipitation		Wind					
	Air Temp 6 ft			Soil Temp 4 inch			Rain	Evapo Trans	Avg Wind	Min Wind	Max Wind			
	Avg	Min	Max	Avg	Min	Max	Inches	Inches	mph	mph	mph			
1-May-22	74	67	84	76	71	84	0.00	0.15	4.1	0.0	19.7			
2-May-22	76	67	87	80	73	90	0.00	0.18	3.7	0.0	15.8			
3-May-22	77	65	88	81	74	90	0.00	0.19	4.8	0.0	18.7			
4-May-22	77	68	89	83	76	92	0.00	0.19	3.7	0.0	17.4			
5-May-22	78	68	91	84	77	93	0.00	0.20	4.2	0.0	24.3			
6-May-22	74	71	81	79	75	83	0.47	0.09	6.5	0.1	29.4			
7-May-22	73	64	82	76	71	82	0.00	0.19	8.1	0.4	24.1			
8-May-22	71	59	84	77	69	86	0.00	0.19	3.7	0.0	18.3			
9-May-22	70	62	80	78	71	87	0.00	0.18	3.5	0.0	20.1			
10-May-22	71	57	84	79	71	87	0.00	0.18	3.0	0.0	17.0			
11-May-22	72	56	87	79	71	88	0.00	0.18	3.7	0.0	19.5			
12-May-22	75	60	88	81	73	89	0.00	0.18	3.5	0.0	19.2			
13-May-22	74	65	85	81	75	88	0.00	0.16	3.3	0.0	16.5			
14-May-22	75	64	87	82	76	90	0.00	0.17	2.9	0.0	13.3			
15-May-22	73	67	86	80	77	85	0.06	0.12	3.5	0.0	19.0			
16-May-22	78	67	88	82	75	90	0.00	0.20	4.1	0.0	18.3			
17-May-22	80	69	91	84	78	92	0.00	0.20	3.9	0.0	18.4			
18-May-22	80	68	93	85	79	93	0.00	0.19	4.2	0.0	19.2			
19-May-22	80	72	93	86	81	94	0.00	0.20	5.2	0.1	19.7			
20-May-22	79	71	90	85	80	91	0.02	0.17	6.5	0.3	31.1			
21-May-22	77	71	85	82	79	86	0.05	0.12	6.2	0.1	31.9			
22-May-22	73	69	84	79	76	83	0.55	0.12	4.6	0.0	38.3			
23-May-22	74	70	85	77	75	82	2.53	0.11	5.9	0.1	32.0			
24-May-22	75	70	85	78	74	83	0.47	0.12	3.2	0.0	27.0			
25-May-22	72	69	81	75	73	77	1.51	0.07	6.1	0.0	29.4			
26-May-22	70	68	73	72	71	73	1.11	0.05	7.4	0.1	20.2			
27-May-22	77	68	87	75	70	82	1.01	0.20	5.9	0.1	23.3			
28-May-22	76	64	85	77	71	84	0.00	0.20	3.1	0.1	15.3			
29-May-22	77	65	90	79	73	85	0.00	0.19	4.1	0.0	26.7			
30-May-22	79	70	91	81	75	89	0.06	0.21	3.8	0.0	20.5			
31-May-22	79	70	92	82	77	90	0	0.21	3.5	0.0	19.4			
<b>High</b>			<b>93</b>			<b>94</b>					<b>38.3</b>			
<b>Low</b>		<b>56</b>			<b>69</b>					<b>0.0</b>				
<b>Average</b>	<b>75</b>	<b>67</b>	<b>86</b>	<b>80</b>	<b>74</b>	<b>87</b>			<b>4.5</b>					
Days over 95 <sup>u</sup> 0 Days of 100 <sup>u</sup> 0 Days below 32 <sup>u</sup> 0				<b>Total for Month</b>			<b>7.84</b>	<b>5.11</b>	<b>Cumulative for Year</b>					
				<b># of Rain Days</b>			<b>11</b>		<b>Rain</b>	<b>31.2</b>				
				<b>Historic Average</b>			<b>3.54</b>		<b>Avg</b>	<b>23.3</b>				
				<b>Deviation from Avg</b>			<b>4.30</b>		<b>Dev</b>	<b>7.9</b>				
				<b>Net Gain/loss (Rain - ET)</b>					<b>2.73</b>	<b>Net</b>	<b>2.7</b>			

## May Marianna FAWN 6' Air Temps



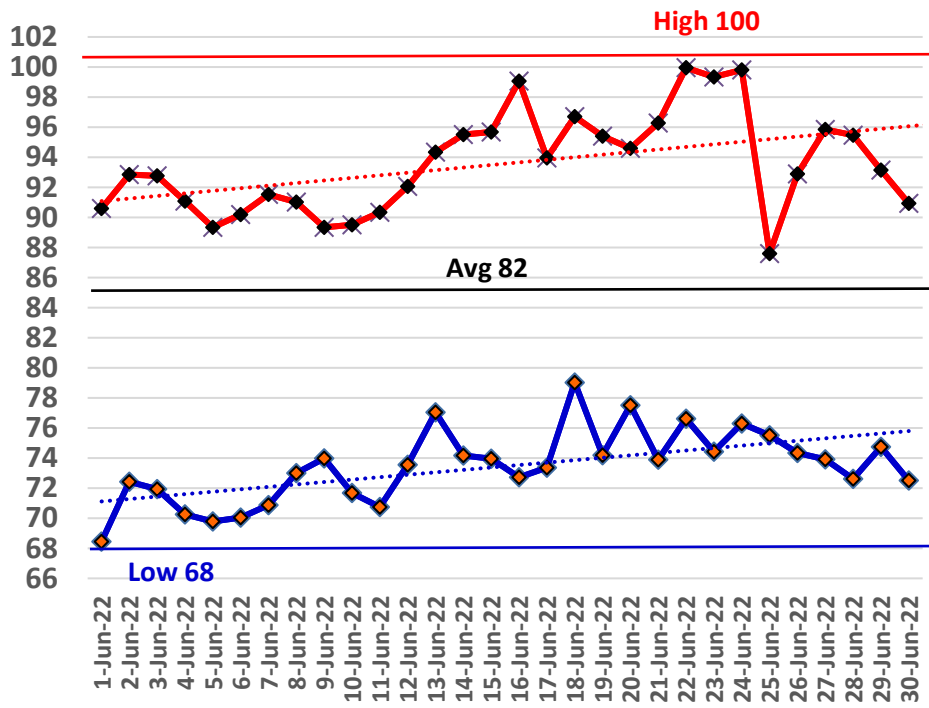
## May Avg Soil Temps Marianna



## June Daily Weather Data

Date	Temperature						Precipitation		Wind			
	Air Temp 6 ft			Soil Temp 4 inch			Rain	Evapo Trans	Avg Wind	Min Wind	Max Wind	
	Avg	Min	Max	Avg	Min	Max	Inches	Inches	mph	mph	mph	
1-Jun-22	80	68	91	84	78	91	0.00	0.21	3.0	0.0	15.6	
2-Jun-22	82	72	93	85	80	91	0.00	0.21	4.1	0.1	19.4	
3-Jun-22	80	72	93	86	81	92	0.00	0.20	3.7	0.0	20.0	
4-Jun-22	81	70	91	86	81	92	0.00	0.22	4.6	0.0	18.1	
5-Jun-22	77	70	89	84	80	90	0.36	0.15	3.3	0.0	38.0	
6-Jun-22	78	70	90	82	77	88	0.01	0.17	3.5	0.1	14.8	
7-Jun-22	81	71	92	83	78	90	0.00	0.21	3.2	0.0	13.3	
8-Jun-22	81	73	91	85	80	91	0.02	0.17	3.8	0.0	18.2	
9-Jun-22	78	74	89	83	80	88	0.75	0.13	4.9	0.1	36.9	
10-Jun-22	79	72	90	82	78	88	0.00	0.20	4.0	0.0	23.9	
11-Jun-22	80	71	90	83	78	90	0.00	0.21	3.8	0.0	16.7	
12-Jun-22	83	74	92	85	80	90	0.00	0.21	4.1	0.1	13.8	
13-Jun-22	85	77	94	87	83	92	0.00	0.21	4.8	0.1	17.3	
14-Jun-22	82	74	96	87	84	94	0.06	0.20	4.6	0.0	25.0	
15-Jun-22	84	74	96	87	82	93	0.00	0.22	3.0	0.1	10.9	
16-Jun-22	85	73	99	89	84	96	0.36	0.23	3.9	0.0	34.1	
17-Jun-22	84	73	94	87	82	93	0.00	0.22	3.9	0.0	26.1	
18-Jun-22	87	79	97	88	84	94	0.00	N/A	6.1	0.1	19.3	
19-Jun-22	85	74	95	89	83	96	0.00	0.24	4.3	0.0	21.3	
20-Jun-22	85	78	95	91	85	98	0.00	0.23	6.5	0.1	18.8	
21-Jun-22	85	74	96	91	86	98	0.00	0.22	2.9	0.0	14.6	
22-Jun-22	88	77	100	93	87	100	0.00	N/A	6.1	0.1	17.9	
23-Jun-22	88	74	99	93	87	100	0.00	N/A	5.5	0.6	29.1	
24-Jun-22	87	76	100	94	88	102	0.00	N/A	4.9	0.0	23.7	
25-Jun-22	78	76	88	91	86	94	0.06	0.11	4.4	0.0	23.5	
26-Jun-22	83	74	93	89	83	97	0.00	0.22	4.0	0.0	17.3	
27-Jun-22	84	74	96	92	85	100	0.00	0.23	3.0	0.0	16.9	
28-Jun-22	81	73	95	92	87	98	0.00	0.18	3.7	0.0	25.2	
29-Jun-22	81	75	93	91	86	97	0.00	0.18	3.8	0.0	23.2	
30-Jun-22	79	73	91	91	86	98	0	0.16	3.1	0.0	29.0	
<b>High</b>			<b>100</b>			<b>102</b>					<b>38.0</b>	
<b>Low</b>		<b>68</b>			<b>77</b>					<b>0.0</b>		
<b>Average</b>	<b>82</b>	73	94	<b>88</b>	83	94			<b>4.1</b>			
				<b>Total for Month</b>			<b>1.62</b>	5.14	<b>Cumulative for Year</b>			
Days over 95 <sup>u</sup>				11			<b># of Rain Days</b>		7	<b>Rain</b>	32.9	
Days of 100 <sup>u</sup>				2			<b>Historic Average</b>		4.95	<b>Avg</b>	28.3	
Days below 32 <sup>u</sup>				0			<b>Deviation from Avg</b>		-3.33	<b>Dev</b>	4.6	
<b>Net Gain/loss (Rain - ET)</b>								<b>-3.52</b>	<b>Net</b>	2.7		

## June Marianna FAWN 6' Air Temps

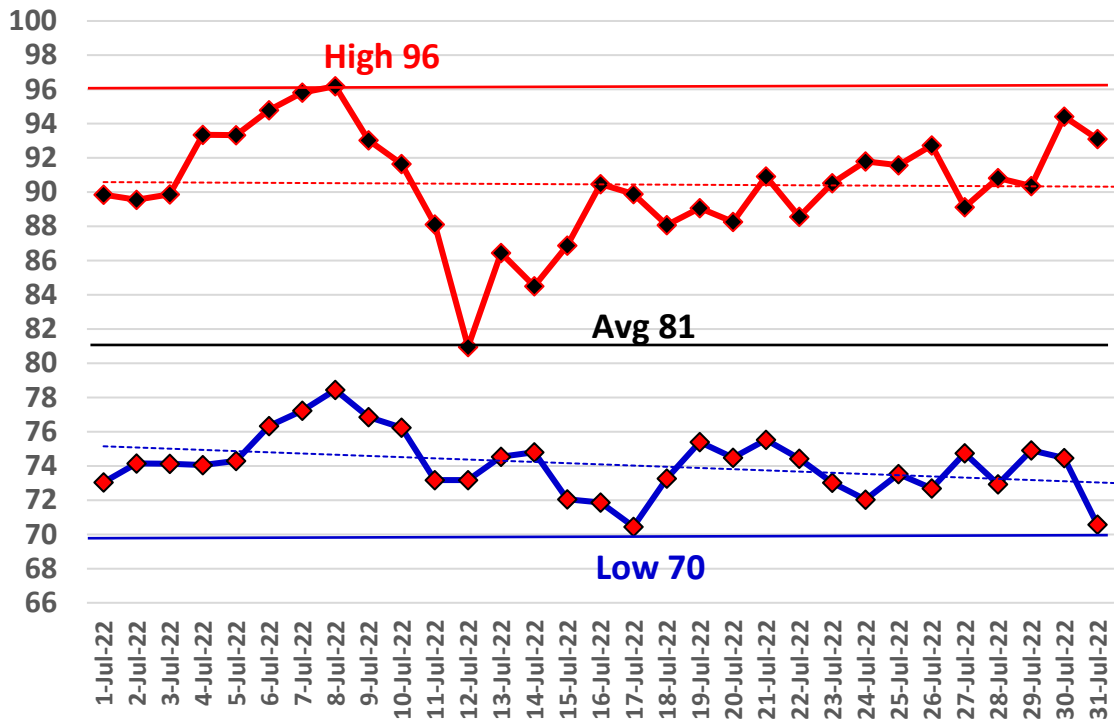


# July Daily Weather Data

Date	Temperature						Precipitation		Wind			
	Air Temp 6 ft			Soil Temp 4 inch			Rain	Evapo Trans	Avg Wind	Min Wind	Max Wind	
	Avg	Min	Max	Avg	Min	Max	Inches	Inches	mph	mph	mph	
1-Jul-22	82	73	90	91	86	97	0.00	0.18	3.9	0.0	17.7	
2-Jul-22	80	74	90	90	87	96	0.06	0.14	3.6	0.0	28.8	
3-Jul-22	79	74	90	87	84	93	0.02	0.15	4.0	0.0	22.7	
4-Jul-22	80	74	93	87	83	98	0.63	0.18	3.1	0.0	24.6	
5-Jul-22	83	74	93	88	81	95	0.00	0.22	2.9	0.0	17.7	
6-Jul-22	85	76	95	89	83	98	0.00	0.24	3.8	0.0	16.9	
7-Jul-22	86	77	96	92	85	100	0.00	0.23	4.6	0.1	15.6	
8-Jul-22	86	78	96	94	87	102	0.00	N/A	4.6	0.1	22.8	
9-Jul-22	82	77	93	91	87	97	0.18	0.16	4.1	0.0	20.9	
10-Jul-22	83	76	92	88	83	94	0.01	0.19	4.6	0.0	15.1	
11-Jul-22	79	73	88	86	82	92	1.13	0.12	4.0	0.0	31.7	
12-Jul-22	76	73	81	82	80	85	0.14	0.08	3.7	0.0	17.8	
13-Jul-22	79	75	86	83	79	88	0.28	0.13	3.2	0.0	12.6	
14-Jul-22	77	75	85	82	80	84	0.13	0.10	3.3	0.0	25.7	
15-Jul-22	79	72	87	83	78	89	0.19	0.16	3.8	0.0	16.8	
16-Jul-22	80	72	90	84	78	93	0.00	0.20	3.5	0.0	20.5	
17-Jul-22	80	70	90	85	78	92	0.00	0.20	3.3	0.0	16.2	
18-Jul-22	80	73	88	85	81	89	0.36	0.15	3.3	0.0	16.9	
19-Jul-22	80	75	89	84	81	89	0.08	0.15	4.1	0.1	25.0	
20-Jul-22	79	74	88	82	80	86	1.14	0.12	5.1	0.0	31.5	
21-Jul-22	83	76	91	84	78	91	0.00	0.21	5.3	0.2	21.4	
22-Jul-22	80	74	89	83	81	86	0.68	0.14	3.8	0.0	29.2	
23-Jul-22	81	73	91	84	79	92	0.00	0.21	3.9	0.0	17.9	
24-Jul-22	80	72	92	85	79	94	0.00	0.19	3.0	0.0	22.5	
25-Jul-22	80	74	92	86	80	94	0.00	0.18	3.2	0.0	25.0	
26-Jul-22	82	73	93	87	81	96	0.00	0.21	2.9	0.0	21.1	
27-Jul-22	81	75	89	88	83	93	0.00	0.17	3.6	0.1	19.4	
28-Jul-22	79	73	91	86	83	93	0.73	0.14	2.8	0.0	22.7	
29-Jul-22	81	75	90	85	81	91	0.04	0.17	4.2	0.1	24.5	
30-Jul-22	84	74	94	87	81	94	0.00	0.22	3.4	0.0	13.6	
31-Jul-22	81	71	93	87	80	95	0.00	0.19	2.9	0.0	20.8	
<b>High</b>			<b>96</b>			<b>102</b>					<b>31.7</b>	
<b>Low</b>		<b>70</b>			<b>78</b>					<b>0.0</b>		
<b>Average</b>	<b>81</b>	74	90	<b>86</b>	82	93			<b>3.7</b>			
				<b>Total for Month</b>			<b>5.80</b>	5.13	<b>Cumulative for Year</b>			
Days over 95 <sup>o</sup>				2			<b># of Rain Days</b>		16	<b>Rain</b>	38.7	
Days of 100 <sup>o</sup>				0			<b>Historic Average</b>		6.14	<b>Avg</b>	34.4	
Days below 32 <sup>o</sup>				0			<b>Deviation from Avg</b>		-0.34	<b>Dev</b>	4.2	
<b>Net Gain/loss (Rain - ET)</b>								<b>0.67</b>	<b>Net</b>	2.7		



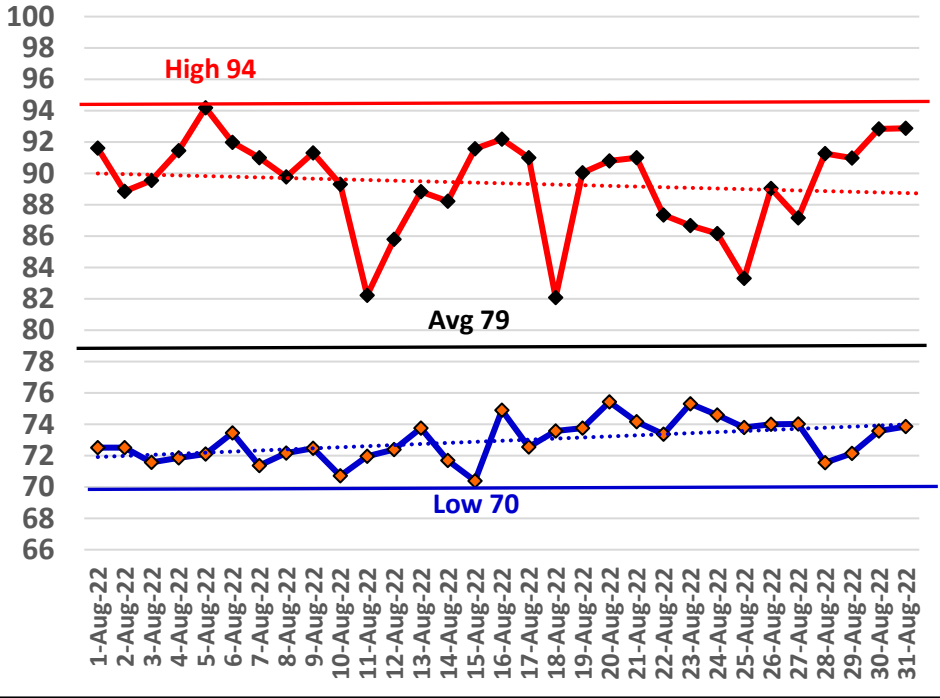
# July Marianna FAWN 6' Air Temps



# August Daily Weather Data

Date	Temperature						Precipitation		Wind			
	Air Temp 6 ft			Soil Temp 4 inch			Rain	Evapo Trans	Avg Wind	Min Wind	Max Wind	
	Avg	Min	Max	Avg	Min	Max	Inches	Inches	mph	mph	mph	
1-Aug-22	82	73	92	88	82	96	0.00	0.20	3.8	0.0	18.8	
2-Aug-22	78	73	89	86	83	91	0.48	0.14	3.6	0.0	32.1	
3-Aug-22	80	72	90	86	79	94	0.00	0.19	2.7	0.0	11.0	
4-Aug-22	80	72	91	86	80	94	0.00	0.17	2.9	0.0	25.0	
5-Aug-22	82	72	94	87	80	97	0.00	0.21	2.9	0.0	26.2	
6-Aug-22	78	73	92	86	82	94	0.21	0.13	2.9	0.0	25.3	
7-Aug-22	77	71	91	84	79	94	0.47	0.16	2.6	0.0	31.1	
8-Aug-22	78	72	90	84	79	93	0.01	0.16	2.7	0.0	20.5	
9-Aug-22	77	72	91	84	80	93	0.98	0.14	3.0	0.0	22.5	
10-Aug-22	77	71	89	82	78	89	0.04	0.14	3.5	0.0	17.2	
11-Aug-22	77	72	82	81	78	86	0.14	0.13	4.6	0.0	26.7	
12-Aug-22	77	72	86	82	78	88	0.05	0.13	4.6	0.0	20.0	
13-Aug-22	79	74	89	83	79	89	1.34	0.14	3.9	0.0	30.0	
14-Aug-22	79	72	88	83	78	90	0.06	0.16	2.6	0.0	22.0	
15-Aug-22	81	70	92	85	78	93	0.02	0.19	2.7	0.0	11.5	
16-Aug-22	81	75	92	85	82	91	0.00	0.15	5.1	0.0	19.3	
17-Aug-22	81	73	91	85	80	91	0.17	0.17	2.9	0.0	20.7	
18-Aug-22	77	74	82	83	81	85	0.49	0.10	3.2	0.0	15.9	
19-Aug-22	81	74	90	84	79	91	0.00	0.17	2.9	0.0	13.1	
20-Aug-22	80	75	91	86	81	93	0.00	0.17	2.9	0.0	18.6	
21-Aug-22	80	74	91	86	81	94	0.00	0.16	2.7	0.0	21.1	
22-Aug-22	80	73	87	86	81	91	0.00	0.15	4.2	0.0	16.0	
23-Aug-22	80	75	87	86	82	90	0.00	0.13	2.5	0.0	10.1	
24-Aug-22	79	75	86	85	82	89	0.00	0.11	2.6	0.0	11.3	
25-Aug-22	77	74	83	83	81	86	0.08	0.08	2.2	0.0	8.5	
26-Aug-22	79	74	89	84	80	91	0.00	0.14	2.5	0.0	19.8	
27-Aug-22	78	74	87	84	81	90	0.24	0.12	2.6	0.0	16.1	
28-Aug-22	79	72	91	85	79	93	0.00	0.18	2.8	0.0	20.7	
29-Aug-22	81	72	91	86	81	93	0.00	0.16	2.3	0.0	10.7	
30-Aug-22	82	74	93	88	82	96	0.00	0.18	2.5	0.0	13.6	
31-Aug-22	81	74	93	88	83	95	0.00	0.18	3.8	0.0	21.5	
<b>High</b>			<b>94</b>			<b>97</b>					<b>32.1</b>	
<b>Low</b>		<b>70</b>			<b>78</b>					<b>0.0</b>		
<b>Average</b>	<b>79</b>	73	89	<b>85</b>	80	92			<b>3.1</b>			
				<b>Total for Month</b>			<b>4.78</b>	4.74	<b>Cumulative for Year</b>			
Days over 95 <sup>u</sup>				0			<b># of Rain Days</b>		15	<b>Rain</b>	43.4	
Days of 100 <sup>u</sup>				0			<b>Historic Average</b>		5.36	<b>Avg</b>	39.8	
Days below 32 <sup>u</sup>				0			<b>Deviation from Avg</b>		-0.58	<b>Dev</b>	3.6	
<b>Net Gain/loss (Rain - ET)</b>								<b>0.04</b>	<b>Net</b>	2.7		

## August Marianna FAWN 6' Air Temps

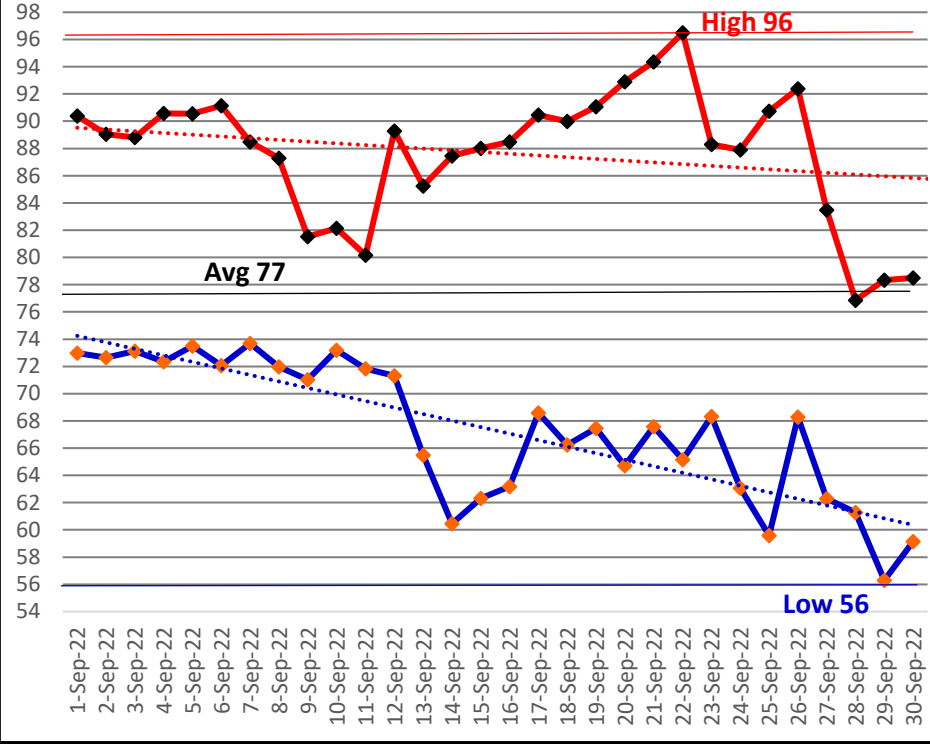


Summer Rain Days - 38 of 92 days

# September Daily Weather Data

Date	Temperature						Precipitation		Wind			
	Air Temp 6 ft			Soil Temp 4 inch			Rain	Evapo Trans	Avg Wind	Min Wind	Max Wind	
	Avg	Min	Max	Avg	Min	Max	Inches	Inches	mph	mph	mph	
1-Sep-22	80	73	90	89	84	96	0.02	0.16	4.1	0.0	20.1	
2-Sep-22	79	73	89	87	83	93	0.00	0.15	4.5	0.0	21.4	
3-Sep-22	78	73	89	86	83	92	0.00	0.12	2.9	0.0	17.2	
4-Sep-22	79	72	91	86	82	95	0.26	0.16	3.2	0.0	23.8	
5-Sep-22	80	73	91	85	81	90	0.01	0.15	3.0	0.0	13.3	
6-Sep-22	81	72	91	85	80	90	0.00	0.16	3.3	0.0	17.7	
7-Sep-22	79	74	88	84	81	88	0.00	0.11	2.9	0.0	13.9	
8-Sep-22	77	72	87	84	81	89	0.00	0.13	3.3	0.0	16.1	
9-Sep-22	76	71	82	82	81	84	0.03	0.08	2.5	0.0	16.6	
10-Sep-22	76	73	82	81	80	82	0.00	0.07	4.3	0.0	19.8	
11-Sep-22	75	72	80	80	79	82	0.18	0.07	3.5	0.1	18.8	
12-Sep-22	78	71	89	82	77	87	0.00	0.15	2.9	0.0	16.3	
13-Sep-22	76	65	85	83	78	89	0.00	0.16	3.6	0.0	16.6	
14-Sep-22	73	60	87	82	76	89	0.00	0.15	2.5	0.0	14.2	
15-Sep-22	74	62	88	83	77	90	0.00	0.15	2.1	0.0	15.0	
16-Sep-22	76	63	88	84	78	91	0.00	0.15	3.1	0.0	17.4	
17-Sep-22	78	69	90	85	80	92	0.00	0.16	2.2	0.0	14.9	
18-Sep-22	78	66	90	85	80	91	0.00	0.16	4.3	0.0	21.1	
19-Sep-22	78	67	91	86	81	91	0.00	0.15	3.7	0.0	20.9	
20-Sep-22	79	65	93	86	80	93	0.00	0.16	2.9	0.0	15.8	
21-Sep-22	80	68	94	87	82	93	0.00	0.15	2.7	0.0	14.1	
22-Sep-22	81	65	96	87	81	94	0.00	0.16	3.6	0.0	15.6	
23-Sep-22	78	68	88	88	83	94	0.00	0.15	4.4	0.0	14.6	
24-Sep-22	74	63	88	86	81	93	0.00	0.14	2.7	0.0	15.3	
25-Sep-22	75	60	91	86	80	93	0.00	0.14	2.4	0.0	13.4	
26-Sep-22	79	68	92	87	82	93	0.00	0.15	3.9	0.1	15.1	
27-Sep-22	73	62	83	84	80	89	0.00	0.13	7.0	0.0	20.5	
28-Sep-22	68	61	77	80	77	84	0.00	0.11	10.7	0.1	29.9	
29-Sep-22	66	56	78	79	74	84	0.00	0.12	9.7	0.1	29.6	
30-Sep-22	68	59	78	79	75	84	0.00	0.11	5.6	0.0	20.2	
<b>High</b>			<b>96</b>			<b>96</b>					<b>29.9</b>	
<b>Low</b>		<b>56</b>			<b>74</b>					<b>0.0</b>		
<b>Average</b>	<b>77</b>	<b>67</b>	<b>88</b>	<b>84</b>	<b>80</b>	<b>90</b>			<b>3.9</b>			
Days over 95 <sup>u</sup>				1			<b>Total for Month</b>		<b>0.50</b>	4.11	<b>Cumulative for Year</b>	
Days of 100 <sup>u</sup>				0			<b># of Rain Days</b>		5.00		<b>Rain</b>	43.9
Days below 32 <sup>u</sup>				0			<b>Historic Average</b>		4.39		<b>Avg</b>	44.2
Days of 90+				12			<b>Deviation from Avg</b>		-3.89		<b>Dev</b>	-0.3
							<b>Net Gain/loss (Rain - ET)</b>		<b>-3.61</b>		<b>Net</b>	2.7

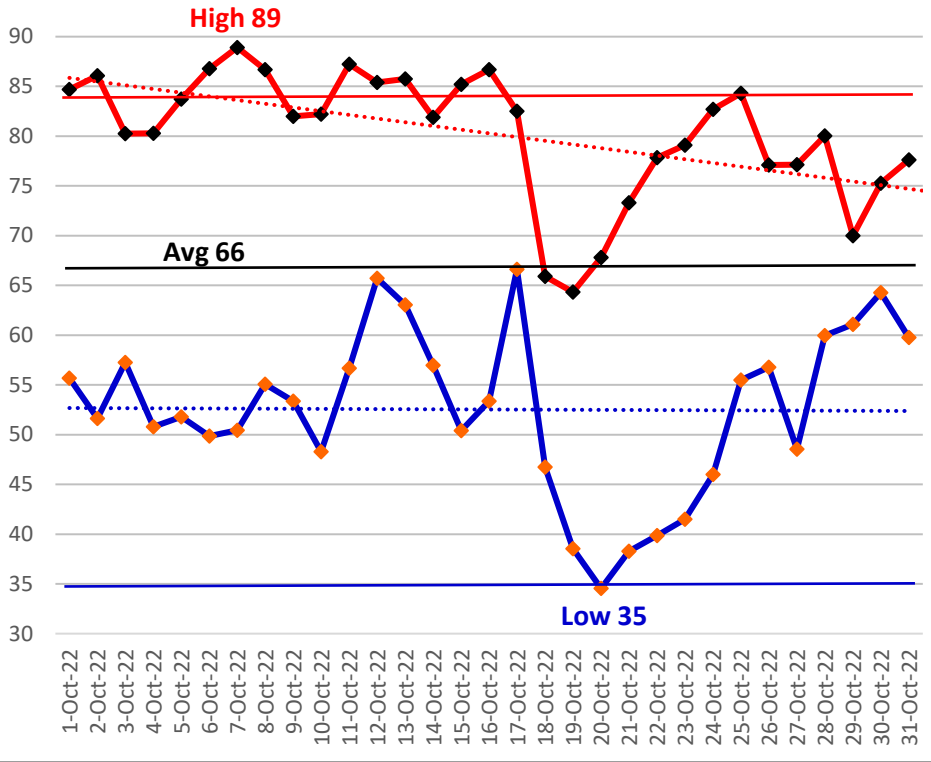
# September Marianna FAWN 6' Air Temps



# October Daily Weather Data

Date	Temperature						Precipitation		Wind			
	Air Temp 6 ft			Soil Temp 4 inch			Rain	Evapo Trans	Avg Wind	Min Wind	Max Wind	
	Avg	Min	Max	Avg	Min	Max	Inches	Inches	mph	mph	mph	
1-Oct-22	70	56	85	80	74	86	0.00	0.13	4.8	0.1	20.8	
2-Oct-22	70	52	86	79	74	85	0.00	0.12	5.8	0.1	27.3	
3-Oct-22	69	57	80	80	75	86	0.00	0.11	3.8	0.0	18.0	
4-Oct-22	66	51	80	79	74	85	0.00	0.10	2.5	0.0	18.0	
5-Oct-22	67	52	84	79	73	86	0.00	0.11	2.7	0.0	18.3	
6-Oct-22	68	50	87	79	73	86	0.00	0.11	2.4	0.0	13.3	
7-Oct-22	69	50	89	79	73	86	0.00	0.11	2.2	0.0	14.8	
8-Oct-22	71	55	87	79	74	84	0.00	0.11	5.0	0.0	19.4	
9-Oct-22	66	53	82	78	73	83	0.00	0.11	5.2	0.0	17.9	
10-Oct-22	66	48	82	77	71	83	0.00	0.10	4.0	0.0	13.4	
11-Oct-22	70	57	87	78	73	84	0.00	0.11	2.7	0.0	13.4	
12-Oct-22	72	66	85	78	74	81	1.42	0.08	4.0	0.0	25.0	
13-Oct-22	73	63	86	77	73	82	0.02	0.11	3.6	0.0	15.6	
14-Oct-22	68	57	82	74	69	78	0.00	0.11	3.2	0.0	13.9	
15-Oct-22	67	50	85	72	67	78	0.00	0.10	2.0	0.0	11.9	
16-Oct-22	71	53	87	73	67	79	0.00	0.10	2.1	0.0	10.0	
17-Oct-22	73	67	83	75	73	78	0.00	0.09	4.9	0.0	17.1	
18-Oct-22	57	47	66	70	66	74	0.00	0.08	8.8	0.2	25.6	
19-Oct-22	50	39	64	66	61	70	0.00	0.07	5.7	0.1	18.5	
20-Oct-22	51	35	68	65	60	71	0.00	0.07	2.6	0.0	14.5	
21-Oct-22	55	38	73	66	61	71	0.00	0.07	1.9	0.0	12.6	
22-Oct-22	58	40	78	66	61	72	0.00	0.08	2.2	0.0	15.1	
23-Oct-22	59	41	79	67	62	73	0.00	0.08	1.9	0.0	11.7	
24-Oct-22	64	46	83	68	63	73	0.00	0.09	2.8	0.0	15.6	
25-Oct-22	70	55	84	70	66	74	0.00	0.09	6.4	0.0	21.2	
26-Oct-22	67	57	77	71	67	74	0.54	0.09	6.2	0.3	24.8	
27-Oct-22	62	49	77	67	62	73	0.00	0.08	2.6	0.0	11.9	
28-Oct-22	69	60	80	69	65	74	0.00	0.09	3.2	0.0	19.1	
29-Oct-22	66	61	70	69	67	70	0.00	0.05	4.3	0.0	18.3	
30-Oct-22	69	64	75	69	68	71	0.00	0.06	7.3	0.2	19.6	
31-Oct-22	69	60	78	71	69	74	0.15	0.07	3.5	0.1	13.1	
<b>High</b>			<b>89</b>			<b>86</b>					<b>27.3</b>	
<b>Low</b>		<b>35</b>			<b>60</b>					<b>0.0</b>		
<b>Average</b>	<b>66</b>	<b>53</b>	<b>80</b>	<b>73</b>	<b>69</b>	<b>78</b>			<b>3.9</b>			
Days over 95 <sup>u</sup>	0			<b>Total for Month</b>			<b>2.13</b>	2.88	<b>Cumulative for Year</b>			
				<b># of Rain Days</b>			4.00		<b>Rain</b>	46.1		
				<b>Historic Average</b>			2.80		<b>Avg</b>	47.0		
				<b>Deviation from Avg</b>			-0.67		<b>Dev</b>	-0.9		
Days below 32 <sup>u</sup>	0			<b>Net Gain/loss (Rain - ET)</b>			<b>-0.75</b>	<b>Net</b>	2.7			

# October Marianna FAWN 6' Air Temps

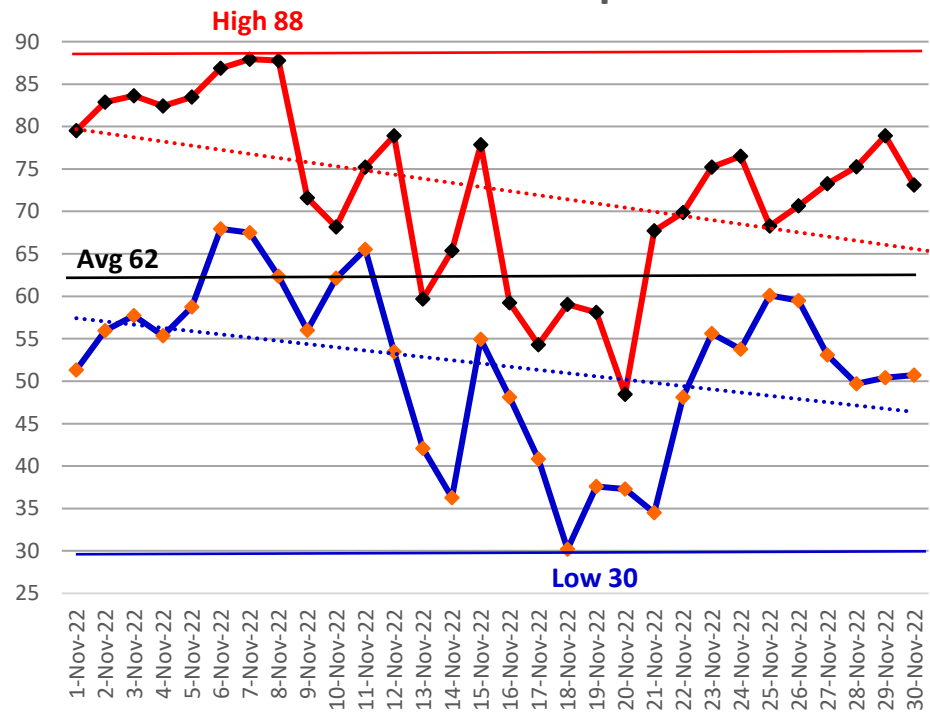


# November Daily Weather Data

Date	Temperature						Precipitation		Wind		
	Air Temp 6 ft			Soil Temp 4 inch			Rain	Evapo Trans	Avg Wind	Min Wind	Max Wind
	Avg	Min	Max	Avg	Min	Max	Inches	Inches	mph	mph	mph
1-Nov-22	65	51	80	68	64	73	0.00	0.08	2.8	0.0	18.3
2-Nov-22	69	56	83	70	65	75	0.00	0.09	2.3	0.0	12.1
3-Nov-22	69	58	84	70	66	75	0.00	0.09	2.5	0.0	15.1
4-Nov-22	68	55	82	70	66	74	0.00	0.09	2.7	0.0	14.9
5-Nov-22	71	59	83	71	67	75	0.00	0.08	3.9	0.0	18.1
6-Nov-22	76	68	87	73	70	77	0.00	0.09	3.6	0.0	16.6
7-Nov-22	76	68	88	74	72	78	0.00	0.10	2.5	0.0	16.0
8-Nov-22	74	62	88	74	71	77	0.00	N/A	3.0	0.1	20.5
9-Nov-22	64	56	72	70	67	73	0.00	0.07	4.8	0.1	23.6
10-Nov-22	65	62	68	68	67	69	1.16	0.05	12.1	0.4	35.1
11-Nov-22	69	66	75	69	67	70	0.05	0.06	6.8	0.2	25.6
12-Nov-22	68	53	79	69	67	73	0.00	0.07	6.2	0.1	20.9
13-Nov-22	50	42	60	63	59	67	0.00	0.05	8.6	0.5	22.0
14-Nov-22	52	36	65	60	55	64	0.00	0.05	3.0	0.0	12.7
15-Nov-22	64	55	78	64	60	68	0.11	0.07	8.5	0.0	29.2
16-Nov-22	54	48	59	62	59	65	0.00	0.05	8.3	0.3	21.1
17-Nov-22	48	41	54	58	55	59	0.00	0.05	5.9	0.4	15.6
18-Nov-22	44	30	59	55	51	59	0.00	0.04	4.3	0.1	17.1
19-Nov-22	50	38	58	56	53	58	0.05	0.05	2.7	0.0	15.3
20-Nov-22	45	37	48	54	51	56	0.04	0.04	5.8	0.1	18.0
21-Nov-22	50	35	68	54	49	59	0.00	0.05	2.8	0.1	12.5
22-Nov-22	59	48	70	58	54	62	0.00	0.06	3.2	0.0	11.9
23-Nov-22	63	56	75	61	58	66	0.00	0.06	2.9	0.0	14.2
24-Nov-22	65	54	77	63	60	67	0.00	0.06	2.8	0.0	14.5
25-Nov-22	64	60	68	65	64	67	0.07	0.05	3.7	0.0	16.4
26-Nov-22	64	59	71	65	63	66	0.01	0.05	6.3	0.1	22.4
27-Nov-22	66	53	73	66	62	69	0.20	0.06	8.7	0.4	26.9
28-Nov-22	62	50	75	63	60	67	0.00	0.06	4.3	0.0	19.3
29-Nov-22	65	50	79	64	60	68	0.00	0.07	5.8	0.0	22.9
30-Nov-22	66	51	73	65	61	67	1.14	0.06	7.8	0.1	31.5
<b>High</b>			<b>88</b>			<b>78</b>					<b>35.1</b>
<b>Low</b>		<b>30</b>			<b>49</b>					<b>0.0</b>	
<b>Average</b>	<b>62</b>	<b>52</b>	<b>73</b>	<b>65</b>	<b>61</b>	<b>68</b>			<b>5.0</b>		
Days over 95 <sup>o</sup>				<b>Total for Month</b>			<b>2.83</b>	1.85	<b>Cumulative for Year</b>		
				<b># of Rain Days</b>			9.00		<b>Rain</b>	48.9	
				<b>Historic Average</b>			3.31		<b>Avg</b>	50.3	
				<b>Deviation from Avg</b>			-0.48		<b>Dev</b>	-1.4	
				<b>Net Gain/loss (Rain - ET)</b>				<b>0.98</b>	<b>Net</b>	2.7	
Days below 32 <sup>o</sup>											



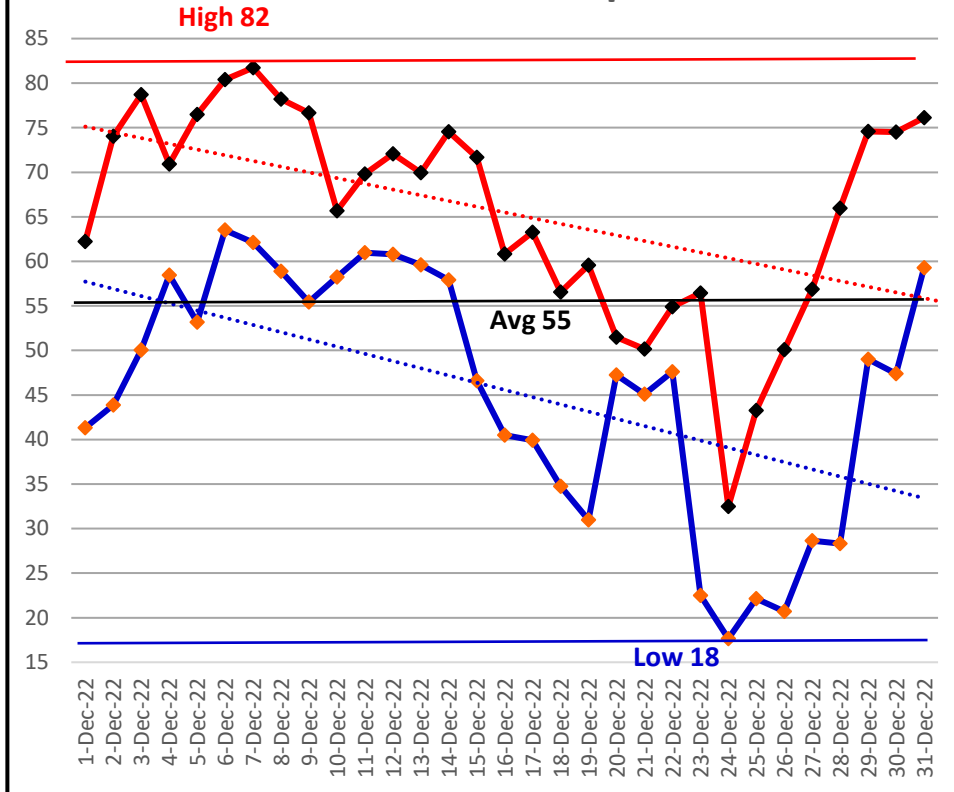
# November Marianna FAWN 6' Air Temps



## December Daily Weather Data

Date	Temperature						Precipitation		Wind		
	Air Temp 6 ft			Soil Temp 4 inch			Rain	Evapo Trans	Avg Wind	Min Wind	Max Wind
	Avg	Min	Max	Avg	Min	Max	Inches	Inches	mph	mph	mph
1-Dec-22	50	41	62	58	54	62	0.00	0.04	3.6	0.0	16.6
2-Dec-22	57	44	74	59	54	64	0.00	0.05	3.1	0.0	15.3
3-Dec-22	66	50	79	62	57	67	0.01	0.06	3.6	0.0	15.1
4-Dec-22	66	58	71	66	64	68	0.15	0.05	2.7	0.0	10.3
5-Dec-22	65	53	77	65	61	69	0.00	0.06	2.5	0.0	11.4
6-Dec-22	70	64	80	68	65	71	0.00	0.07	4.0	0.1	12.6
7-Dec-22	71	62	82	69	68	73	0.00	0.07	3.4	0.0	21.0
8-Dec-22	67	59	78	69	67	72	0.01	0.06	3.0	0.0	13.3
9-Dec-22	65	55	77	68	65	71	0.00	0.06	3.2	0.0	13.2
10-Dec-22	62	58	66	66	65	67	0.00	0.04	2.6	0.0	10.5
11-Dec-22	64	61	70	67	65	69	0.01	0.05	2.4	0.0	9.5
12-Dec-22	64	61	72	67	65	69	0.01	0.05	2.3	0.0	9.8
13-Dec-22	64	60	70	66	65	68	0.00	0.05	7.5	0.1	20.9
14-Dec-22	66	58	75	65	63	67	0.24	0.06	9.9	0.1	28.7
15-Dec-22	60	47	72	65	59	68	0.76	0.05	9.3	0.1	28.3
16-Dec-22	49	40	61	58	56	61	0.00	0.04	4.4	0.0	19.2
17-Dec-22	50	40	63	57	54	61	0.00	0.04	4.3	0.0	18.4
18-Dec-22	44	35	57	54	51	57	0.00	0.03	6.0	0.4	18.9
19-Dec-22	46	31	60	52	48	57	0.02	0.03	3.3	0.0	15.2
20-Dec-22	49	47	51	54	54	55	0.34	0.04	4.5	0.0	26.0
21-Dec-22	48	45	50	54	53	55	0.00	0.04	3.8	0.0	19.4
22-Dec-22	51	48	55	55	54	57	0.04	0.04	2.9	0.0	13.7
23-Dec-22	36	23	56	51	44	56	0.01	0.04	13.6	1.1	35.8
24-Dec-22	25	18	32	42	40	45	0.00	0.02	8.4	0.7	24.0
25-Dec-22	31	22	43	42	39	46	0.00	0.03	4.4	0.0	17.7
26-Dec-22	34	21	50	43	39	48	0.00	0.03	2.0	0.0	10.3
27-Dec-22	40	29	57	46	41	51	0.00	0.03	2.1	0.0	10.6
28-Dec-22	48	28	66	48	42	52	0.00	0.04	3.4	0.0	18.7
29-Dec-22	60	49	75	54	51	59	0.00	0.05	4.9	0.1	17.4
30-Dec-22	61	47	75	56	52	59	0.26	0.06	6.0	0.0	25.3
31-Dec-22	66	59	76	61	58	64	0.04	0.06	6.5	0.1	29.4
<b>High</b>			<b>82</b>			<b>73</b>					<b>35.8</b>
<b>Low</b>		<b>18</b>			<b>39</b>					<b>0.0</b>	
<b>Average</b>	<b>55</b>	46	65	<b>58</b>	55	62			<b>4.6</b>		
Days over 95 <sup>0</sup> 0				<b>Total for Month</b>			<b>1.90</b>	1.44	<b>Cumulative for Year</b>		
				<b># of Rain Days</b>			13.00		<b>Rain</b>	50.8	
				<b>Historic Average</b>			4.39		<b>Avg</b>	54.7	
				<b>Deviation from Avg</b>			-2.49		<b>Dev</b>	-3.9	
				<b>Net Gain/loss (Rain - ET)</b>				<b>0.46</b>	<b>Net</b>	2.7	
Days below 32 <sup>0</sup>		7									
<b>Total days in year</b>	<b>16</b>	<b>14</b>									

# December Marianna FAWN 6' Air Temps



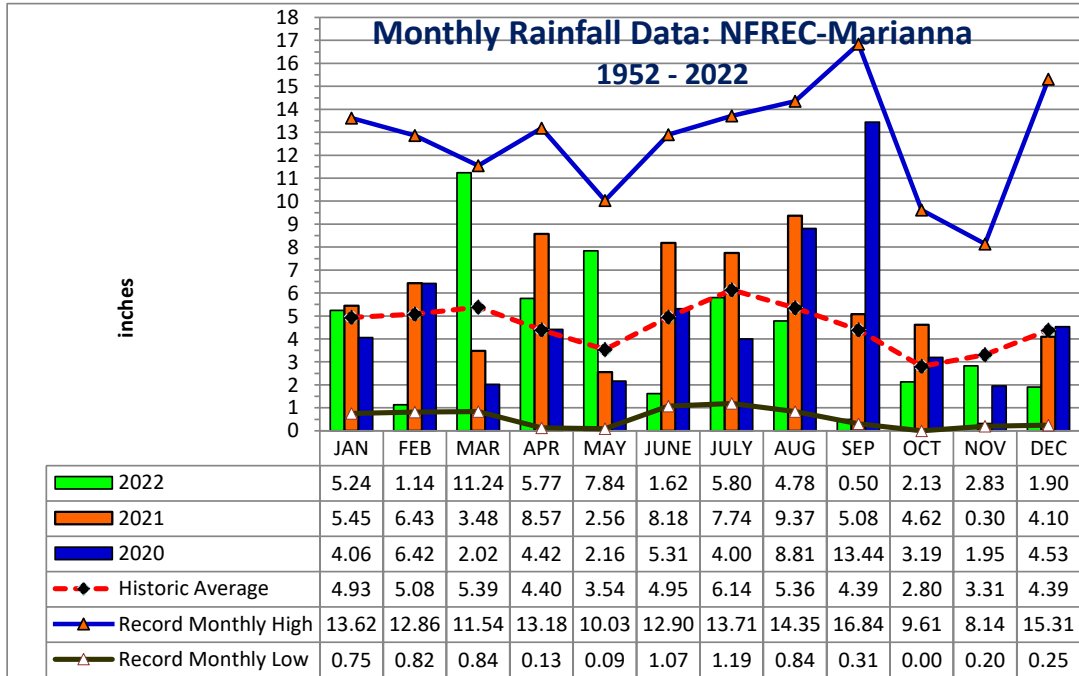


YEAR	JAN	FEB	MAR	APR	MAY	JUNE	JULY	AUG	SEP	OCT	NOV	DEC	TOTAL
1952	1.14	8.88	4.48	2.11	5.13	1.12	5.95	8.81	3.09	0.65	3.26	3.42	48.04
1953	4.84	7.26	3.03	8.43	2.43	3.97	6.84	1.63	6.33	0.65	4.09	15.31	64.81
1954	1.33	3.49	2.62	2.58	1.96	3.46	3.28	2.84	1.72	1.30	2.66	1.44	28.68
1955	3.66	1.83	0.84	5.80	3.03	1.62	6.75	3.75	2.44	2.10	0.72	0.77	33.31
1956	3.59	5.18	3.77	2.04	4.03	5.45	8.52	4.09	6.44	5.08	0.28	3.34	51.81
1957	0.75	2.65	5.17	5.74	4.60	5.75	9.83	5.91	16.84	1.31	6.24	2.22	67.01
1958	4.48	3.61	4.73	7.22	5.57	6.00	8.39	3.45	3.68	1.88	1.75	2.32	53.08
1959	3.67	7.06	8.50	5.73	6.95	3.77	4.83	3.67	3.07	7.93	0.21	1.53	56.92
1960	3.36	7.08	3.41	6.80	3.20	4.75	4.97	4.80	6.22	2.00	0.47	2.35	49.41
1961	4.23	4.15	3.64	5.57	3.97	4.41	3.99	11.09	2.60	0.00	2.84	6.23	52.72
1962	1.72	2.80	8.13	3.28	2.86	3.67	7.97	6.07	3.07	2.82	5.16	1.67	49.22
1963	7.31	3.02	3.18	1.36	3.50	7.99	5.16	1.50	5.25	0.01	4.22	6.05	48.55
1964	10.80	6.81	6.41	9.47	2.23	5.68	9.22	3.07	7.47	9.61	3.35	6.44	80.56
1965	2.63	6.09	5.51	3.96	0.18	9.60	3.26	4.18	4.48	3.41	1.81	3.60	48.71
1966	5.56	9.84	2.57	0.77	5.80	3.13	3.25	9.82	5.09	1.41	2.03	4.62	53.89
1967	8.27	3.32	2.19	0.13	2.61	7.02	6.49	3.58	1.40	1.86	2.40	7.98	47.25
1968	1.28	2.30	3.40	2.50	3.39	1.18	5.45	4.61	2.99	1.41	5.11	5.34	38.96
1969	1.68	3.49	7.08	4.54	3.01	1.71	13.18	3.05	5.64	1.50	1.22	3.80	49.90
1970	4.16	9.20	8.86	1.83	1.81	3.69	5.04	8.01	0.49	4.40	2.21	3.13	52.83
1971	1.97	6.11	7.15	3.17	3.03	3.85	5.20	6.76	2.47	1.84	1.94	3.70	47.19
1972	3.62	6.03	6.41	0.38	2.87	8.89	3.78	5.39	2.14	2.44	3.29	3.77	49.01
1973	8.14	7.71	8.38	7.60	6.87	3.63	11.12	4.51	5.40	0.27	3.64	5.33	72.60
1974	5.24	5.80	2.66	3.40	3.78	1.56	3.29	8.01	4.68	0.84	2.14	2.89	44.29
1975	10.21	6.36	4.91	10.35	3.97	4.10	13.71	5.40	3.81	4.35	2.89	3.28	73.34
1976	6.99	1.50	4.89	1.87	8.89	3.08	3.03	3.47	5.47	6.18	5.72	3.97	55.06
1977	3.47	1.81	6.52	0.88	0.60	6.36	3.55	5.22	9.83	2.59	8.14	4.19	53.16
1978	7.28	3.28	7.25	4.65	6.73	3.79	7.25	4.90	0.98	0.20	6.01	3.65	55.97
1979	7.30	7.78	3.26	7.75	6.22	1.31	7.49	6.30	11.51	0.53	4.47	2.84	66.76
1980	6.58	2.96	11.54	9.29	4.50	3.50	5.87	2.53	4.56	4.71	1.52	0.25	57.81
1981	1.70	5.32	5.94	3.03	2.73	4.74	4.02	2.53	2.44	1.75	0.85	4.94	39.99
1982	4.17	5.61	2.91	5.93	5.39	3.00	7.51	4.42	6.00	2.65	2.34	9.14	59.07
1983	4.92	6.84	8.53	7.88	2.27	5.66	1.19	2.53	8.97	3.52	5.90	7.65	65.86
1984	5.49	5.01	8.62	6.29	2.50	5.31	12.01	5.76	0.32	1.60	1.63	0.80	55.34
1985	4.60	4.46	2.60	1.18	4.44	5.68	3.68	5.58	1.42	7.42	7.91	5.34	54.31
1986	5.68	10.27	3.21	0.83	2.26	1.85	2.75	4.12	2.35	2.22	4.40	5.68	45.62
1987	8.62	5.52	7.23	0.40	4.46	5.43	5.51	4.18	2.27	0.06	4.02	0.81	48.51
1988	5.57	6.40	8.41	2.69	0.28	1.07	5.43	3.98	5.53	1.98	3.28	1.23	45.85
1989	1.59	2.74	4.96	3.63	7.01	12.90	11.19	3.06	3.36	7.20	4.71	5.45	67.80
1990	5.26	4.57	4.55	3.00	3.22	4.02	3.65	2.91	0.85	1.34	0.93	3.42	37.72
1991	13.62	3.44	9.00	5.32	10.03	5.30	10.67	3.89	1.53	1.17	1.60	3.00	68.57
1992	8.37	6.29	7.92	2.50	1.41	11.16	8.69	6.72	3.19	2.08	7.40	2.93	68.66
1993	12.00	3.38	7.41	1.50	1.60	4.18	6.68	3.89	3.44	2.90	2.27	3.63	52.88
1994	8.64	2.53	6.25	4.34	1.82	11.41	10.95	9.08	6.44	7.62	2.53	3.79	75.40
1995	5.23	3.13	4.29	4.35	3.90	5.56	3.02	6.16	0.86	7.51	4.12	1.78	49.91
1996	3.64	5.99	8.47	5.76	1.50	5.43	2.83	14.28	5.32	3.81	2.01	3.65	62.69
1997	6.68	5.29	2.63	10.08	5.91	6.41	5.73	4.65	3.78	2.10	6.85	8.44	68.55
1998	6.28	8.30	6.11	2.24	1.45	2.35	4.37	2.20	16.31	0.30	2.05	1.98	53.94
1999	6.95	2.90	3.61	1.50	6.71	8.99	8.64	4.02	4.33	3.13	3.56	2.50	56.84

YEAR	JAN	FEB	MAR	APR	MAY	JUNE	JULY	AUG	SEP	OCT	NOV	DEC	TOTAL
2000	3.78	4.96	4.48	4.05	0.09	4.00	3.40	7.15	7.20	0.71	4.43	3.21	47.46
2001	2.16	0.82	10.00	1.99	2.52	8.24	4.66	8.21	1.90	1.51	1.70	0.78	44.49
2002	3.82	2.44	5.51	5.78	2.19	3.45	10.34	3.30	11.83	7.36	7.76	5.99	69.77
2003	2.30	7.03	8.18	4.89	3.11	6.11	7.84	5.99	2.39	3.58	3.04	3.12	57.58
2004	3.19	7.66	0.90	4.37	1.19	6.66	4.92	1.67	10.01	3.89	4.97	3.25	52.68
2005	3.33	2.31	9.05	7.04	1.67	7.47	9.44	11.71	1.62	0.03	3.15	4.81	61.63
2006	4.82	3.90	0.91	1.61	4.97	1.99	2.22	5.18	0.91	3.09	3.41	5.43	38.44
2007	5.99	2.45	1.10	0.99	1.57	3.97	3.94	4.18	1.27	4.79	1.89	4.03	36.17
2008	4.26	9.00	9.11	4.28	1.46	8.64	4.02	9.29	0.74	5.11	3.18	8.23	67.32
2009	2.33	3.26	7.11	7.73	9.17	2.78	3.88	3.19	5.22	3.39	2.35	9.57	59.98
2010	7.53	3.99	3.41	4.01	5.09	2.92	2.31	0.84	1.33	0.22	5.82	0.63	38.10
2011	4.33	4.04	5.00	0.92	0.78	1.66	5.11	1.87	2.26	1.84	1.94	3.75	33.50
2012	3.79	7.49	5.94	3.17	1.42	7.35	5.05	14.35	5.17	1.75	1.30	4.10	60.88
2013	1.05	12.86	2.99	3.54	0.64	3.72	13.39	13.17	2.14	1.96	3.91	4.44	63.81
2014	2.15	4.99	7.70	13.18	4.03	2.32	5.69	2.55	6.03	2.03	5.93	5.32	61.92
2015	3.4	3.8	2.17	9.52	3.55	4.04	4.85	2.75	4.15	1.00	7.33	8.67	55.23
2016	4.8	3.51	8.15	4.94	1.74	3.49	2.79	7.28	4.19	0.22	0.8	12.33	54.24
2017	7.28	3.78	2.11	2.12	4.28	11.53	6.82	4.47	3.75	0.97	0.2	2.76	50.07
2018	4.26	10.50	5.38	3.72	5.06	7.97	5.99	5.67	2.67	5.66	6.94	11.86	75.68
2019	6.53	2.76	3.43	3.94	1.78	3.62	6.36	4.15	0.31	6.43	1.74	6.95	48.00
2020	4.06	6.42	2.02	4.42	2.16	5.31	4.00	8.81	13.44	3.19	1.95	4.53	60.31
2021	5.45	6.43	3.48	8.57	2.56	8.18	7.74	9.37	5.08	4.62	0.30	4.10	65.88
<b>2022</b>	<b>5.24</b>	<b>1.14</b>	<b>11.24</b>	<b>5.77</b>	<b>7.84</b>	<b>1.62</b>	<b>5.80</b>	<b>4.78</b>	<b>0.50</b>	<b>2.13</b>	<b>2.83</b>	<b>1.90</b>	<b>50.79</b>

Deviation from the Average Monthly Rainfall

Inches	0.31	-3.94	5.85	1.37	4.30	-3.33	-0.34	-0.58	-3.89	-0.67	-0.48	-2.49	-3.89
<b>Monthly Average Rainfall, 1952-2022</b>													
AVG.	4.93	5.08	5.39	4.40	3.54	4.95	6.14	5.36	4.39	2.80	3.31	4.39	54.68
<b>% of Annual Rainfall Occuring each Month</b>													
	9.0%	9.3%	9.9%	8.0%	6.5%	9.1%	11.2%	9.8%	8.0%	5.1%	6.1%	8.0%	
<b>Record High/Low for the Month</b>													
<b>LOW</b>	<b>0.75</b>	<b>0.82</b>	<b>0.84</b>	<b>0.13</b>	<b>0.09</b>	<b>1.07</b>	<b>1.19</b>	<b>0.84</b>	<b>0.31</b>	<b>0.00</b>	<b>0.20</b>	<b>0.25</b>	<b>28.68</b>
<b>HIGH</b>	<b>13.62</b>	<b>12.86</b>	<b>11.54</b>	<b>13.18</b>	<b>10.03</b>	<b>12.90</b>	<b>13.71</b>	<b>14.35</b>	<b>16.84</b>	<b>9.61</b>	<b>8.14</b>	<b>15.31</b>	<b>80.56</b>



**Jackson County**  
**Monthly Cumulative Rainfall, 1952 - 2022**  
North Florida Research & Education Center Marianna, FL



YEAR	JAN	FEB	MAR	APR	MAY	JUNE	JULY	AUG	SEP	OCT	NOV	DEC	Wet Ranking	Dry Ranking
1952	1.14	10.02	14.50	16.61	21.74	22.86	28.81	37.62	40.71	41.36	44.62	48.04	54	18
1953	4.84	12.10	15.13	23.56	25.99	29.96	36.80	38.43	44.76	45.41	49.50	64.81	16	56
1954	1.33	4.82	7.44	10.02	11.98	15.44	18.72	21.56	23.28	24.58	27.24	28.68	71	1
1955	3.66	5.49	6.33	12.13	15.16	16.78	23.53	27.28	29.72	31.82	32.54	33.31	70	2
1956	3.59	8.77	12.54	14.58	18.61	24.06	32.58	36.67	43.11	48.19	48.47	51.81	43	29
1957	0.75	3.40	8.57	14.31	18.91	24.66	34.49	40.40	57.24	58.55	64.79	67.01	12	60
1958	4.48	8.09	12.82	20.04	25.61	31.61	40.00	43.45	47.13	49.01	50.76	53.08	38	34
1959	3.67	10.73	19.23	24.96	31.91	35.68	40.51	44.18	47.25	55.18	55.39	56.92	27	45
1960	3.36	10.44	13.85	20.65	23.85	28.60	33.57	38.37	44.59	46.59	47.06	49.41	48	24
1961	4.23	8.38	12.02	17.59	21.56	25.97	29.96	41.05	43.65	43.65	46.49	52.72	41	31
1962	1.72	4.52	12.65	15.93	18.79	22.46	30.43	36.50	39.57	42.39	47.55	49.22	49	23
1963	7.31	10.33	13.51	14.87	18.37	26.36	31.52	33.02	38.27	38.28	42.50	48.55	52	20
1964	10.80	17.61	24.02	33.49	35.72	41.40	50.62	53.69	61.16	70.77	74.12	80.56	1	71
1965	2.63	8.72	14.23	18.19	18.37	27.97	31.23	35.41	39.89	43.30	45.11	48.71	51	21
1966	5.56	15.40	17.97	18.74	24.54	27.67	30.92	40.74	45.83	47.24	49.27	53.89	36	36
1967	8.27	11.59	13.78	13.91	16.52	23.54	30.03	33.61	35.01	36.87	39.27	47.25	57	15
1968	1.28	3.58	6.98	9.48	12.87	14.05	19.50	24.11	27.10	28.51	33.62	38.96	64	8
1969	1.68	5.17	12.25	16.79	19.80	21.51	34.69	37.74	43.38	44.88	46.10	49.90	47	25
1970	4.16	13.36	22.22	24.05	25.86	29.55	34.59	42.60	43.09	47.49	49.70	52.83	40	32
1971	1.97	8.08	15.23	18.40	21.43	25.28	30.48	37.24	39.71	41.55	43.49	47.19	58	14
1972	3.62	9.65	16.06	16.44	19.31	28.20	31.98	37.37	39.51	41.95	45.24	49.01	50	22
1973	8.14	15.85	24.23	31.83	38.70	42.33	53.45	57.96	63.36	63.63	67.27	72.60	5	67
1974	5.24	11.04	13.70	17.10	20.88	22.44	25.73	33.74	38.42	39.26	41.40	44.29	62	10
1975	10.21	16.57	21.48	31.83	35.80	39.90	53.61	59.01	62.82	67.17	70.06	73.34	4	68
1976	6.99	8.49	13.38	15.25	24.14	27.22	30.25	33.72	39.19	45.37	51.09	55.06	32	40
1977	3.47	5.28	11.80	12.68	13.28	19.64	23.19	28.41	38.24	40.83	48.97	53.16	37	35
1978	7.28	10.56	17.81	22.46	29.19	32.98	40.23	45.13	46.11	46.31	52.32	55.97	29	43
1979	7.30	15.08	18.34	26.09	32.31	33.62	41.11	47.41	58.92	59.45	63.92	66.76	13	59
1980	6.58	9.54	21.08	30.37	34.87	38.37	44.24	46.77	51.33	56.04	57.56	57.81	25	47
1981	1.70	7.02	12.96	15.99	18.72	23.46	27.48	30.01	32.45	34.20	35.05	39.99	63	9
1982	4.17	9.78	12.69	18.62	24.01	27.01	34.52	38.94	44.94	47.59	49.93	59.07	24	48
1983	4.92	11.76	20.29	28.17	30.44	36.10	37.29	39.82	48.79	52.31	58.21	65.86	15	57
1984	5.49	10.50	19.12	25.41	27.91	33.22	45.23	50.99	51.31	52.91	54.54	55.34	30	42
1985	4.60	9.06	11.66	12.84	17.28	22.96	26.64	32.22	33.64	41.06	48.97	54.31	33	39
1986	5.68	15.95	19.16	19.99	22.25	24.10	26.85	30.97	33.32	35.54	39.94	45.62	60	12
1987	8.62	14.14	21.37	21.77	26.23	31.66	37.17	41.35	43.62	43.68	47.70	48.51	53	19
1988	5.57	11.97	20.38	23.07	23.35	24.42	29.85	33.83	39.36	41.34	44.62	45.85	59	13
1989	1.59	4.33	9.29	12.92	19.93	32.83	44.02	47.08	50.44	57.64	62.35	67.80	10	62
1990	5.26	9.83	14.38	17.38	20.60	24.62	28.27	31.18	32.03	33.37	34.30	37.72	67	5
1991	13.62	17.06	26.06	31.38	41.41	46.71	57.38	61.27	62.80	63.97	65.57	68.57	8	64
1992	8.37	14.66	22.58	25.08	26.49	37.65	46.34	53.06	56.25	58.33	65.73	68.66	7	65
1993	12.00	15.38	22.79	24.29	25.89	30.07	36.75	40.64	44.08	46.98	49.25	52.88	39	33
1994	8.64	11.17	17.42	21.76	23.58	34.99	45.94	55.02	61.46	69.08	71.61	75.40	3	69
1995	5.23	8.36	12.65	17.00	20.90	26.46	29.48	35.64	36.50	44.01	48.13	49.91	46	26
1996	3.64	9.63	18.10	23.86	25.36	30.79	33.62	47.90	53.22	57.03	59.04	62.69	18	54
1997	6.68	11.97	14.60	24.68	30.59	37.00	42.73	47.38	51.16	53.26	60.11	68.55	9	63
1998	6.28	14.58	20.69	22.93	24.38	26.73	31.10	33.30	49.61	49.91	51.96	53.94	35	37
1999	6.95	9.85	13.46	14.96	21.67	30.66	39.30	43.32	47.65	50.78	54.34	56.84	28	44

YEAR	JAN	FEB	MAR	APR	MAY	JUNE	JULY	AUG	SEP	OCT	NOV	DEC	Ranking	Ranking
2000	3.78	8.74	13.22	17.27	17.36	21.36	24.76	31.91	39.11	39.82	44.25	47.46	56	16
2001	2.16	2.98	12.98	14.97	17.49	25.73	30.39	38.60	40.50	42.01	43.71	44.49	61	11
2002	3.82	6.26	11.77	17.55	19.74	23.19	33.53	36.83	48.66	56.02	63.78	69.77	6	66
2003	2.30	9.33	17.51	22.40	25.51	31.62	39.46	45.45	47.84	51.42	54.46	57.58	26	46
2004	3.19	10.85	11.75	16.12	17.31	23.97	28.89	30.56	40.57	44.46	49.43	52.68	42	30
2005	3.33	5.64	14.69	21.73	23.40	30.87	40.31	52.02	53.64	53.67	56.82	61.63	20	52
2006	4.82	8.72	9.63	11.24	16.21	18.20	20.42	25.60	26.51	29.60	33.01	38.44	65	7
2007	5.99	8.44	9.54	10.53	12.10	16.07	20.01	24.19	25.46	30.25	32.14	36.17	68	4
2008	4.26	13.26	22.37	26.65	28.11	36.75	40.77	50.06	50.80	55.91	59.09	67.32	11	61
2009	2.33	5.59	12.70	20.43	29.60	32.38	36.26	39.45	44.67	48.06	50.41	59.98	23	49
2010	7.53	11.52	14.93	18.94	24.03	26.95	29.26	30.10	31.43	31.65	37.47	38.10	66	6
2011	4.33	8.37	13.37	14.29	15.07	16.73	21.84	23.71	25.97	27.81	29.75	33.50	69	3
2012	3.79	11.28	17.22	20.39	21.81	29.16	34.21	48.56	53.73	55.48	56.78	60.88	21	51
2013	1.05	13.91	16.90	20.44	21.08	24.80	38.19	51.36	53.50	55.46	59.37	63.81	17	55
2014	2.15	7.14	14.84	28.02	32.05	34.37	40.06	42.61	48.64	50.67	56.60	61.92	19	53
2015	3.40	7.20	9.37	18.89	22.44	26.48	31.33	34.08	38.23	39.23	46.56	55.23	31	41
2016	4.80	8.31	16.46	21.40	23.14	26.63	29.42	36.70	40.89	41.11	41.91	54.24	34	38
2017	7.28	11.06	13.17	15.29	19.57	31.10	37.92	42.39	46.14	47.11	47.31	50.07	45	27
2018	4.26	14.76	20.14	23.86	28.92	36.89	42.88	48.55	51.22	56.88	63.82	75.68	2	70
2019	6.53	9.29	12.72	16.66	18.44	22.06	28.42	32.57	32.88	39.31	41.05	48.00	55	17
2020	4.06	10.48	12.50	16.92	19.08	24.39	28.39	37.20	50.64	53.83	55.78	60.31	22	50
2021	5.45	11.88	15.36	23.93	26.49	34.67	42.41	51.78	56.86	61.48	61.78	65.88	14	58
<b>2022</b>	<b>5.24</b>	<b>6.38</b>	<b>17.62</b>	<b>23.39</b>	<b>31.23</b>	<b>32.85</b>	<b>38.65</b>	<b>43.43</b>	<b>43.93</b>	<b>46.06</b>	<b>48.89</b>	<b>50.79</b>	44	28

Deviation from the Average Accumulation

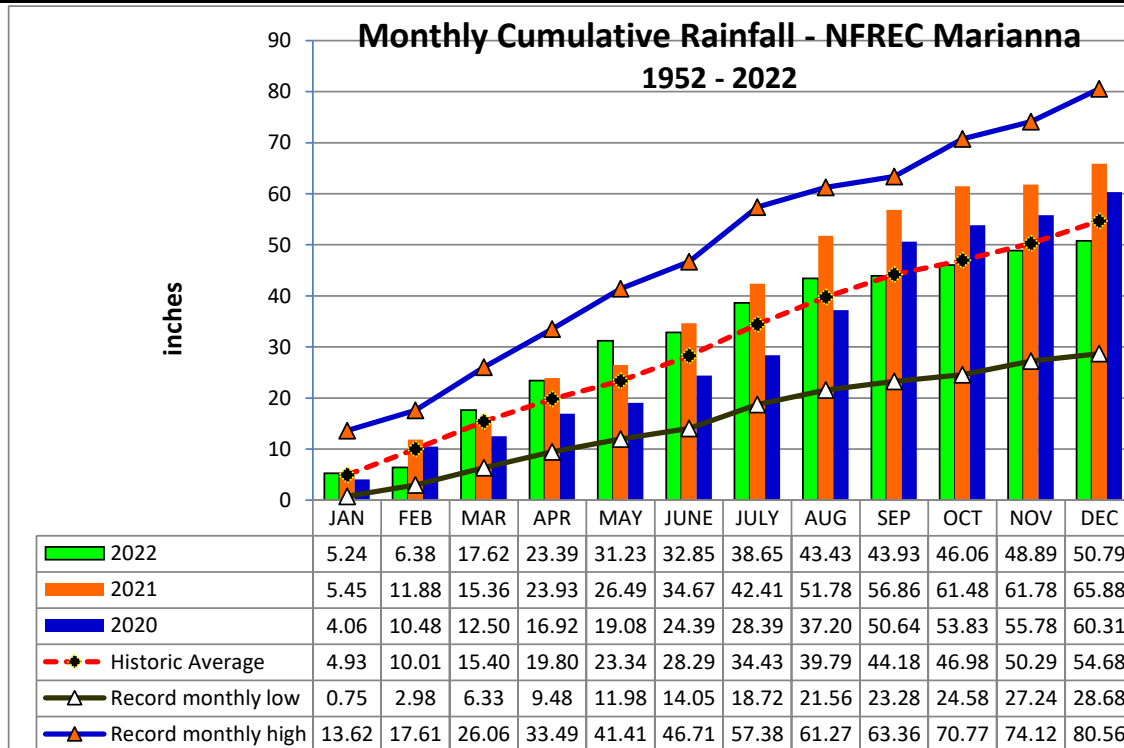
Inches	0.31	-3.63	2.22	3.59	7.89	4.56	4.22	3.64	-0.25	-0.92	-1.40	-3.89
--------	------	-------	------	------	------	------	------	------	-------	-------	-------	-------

Average Accumulation, 1952-2022

Inches	4.93	10.01	15.40	19.80	23.34	28.29	34.43	39.79	44.18	46.98	50.29	54.68
--------	------	-------	-------	-------	-------	-------	-------	-------	-------	-------	-------	-------

Record High/Low Accumulation

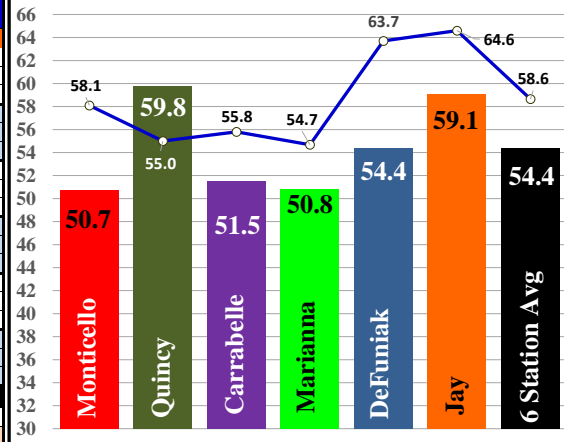
<b>LOW</b>	<b>0.75</b>	<b>2.98</b>	<b>6.33</b>	<b>9.48</b>	<b>11.98</b>	<b>14.05</b>	<b>18.72</b>	<b>21.56</b>	<b>23.28</b>	<b>24.58</b>	<b>27.24</b>	<b>28.68</b>
<b>HIGH</b>	<b>13.62</b>	<b>17.61</b>	<b>26.06</b>	<b>33.49</b>	<b>41.41</b>	<b>46.71</b>	<b>57.38</b>	<b>61.27</b>	<b>63.36</b>	<b>70.77</b>	<b>74.12</b>	<b>80.56</b>



## 2022 UF/IFAS FAWN Panhandle Weather Station Summary

FAWN Station	Data	Jan	Feb	Mar	Apr	May	June	July	Aug	Sept	Oct	Nov	Dec	Total
Monticello	Rain	4.2	1.1	10.1	3.2	6.1	2.6	9.6	6.0	2.1	0.3	4.6	0.9	50.7
	Hist Avg	4.5	4.6	6.1	4.1	3.4	5.7	7.0	6.9	5.4	3.6	3.1	3.7	58.1
	Deviation	-0.3	-3.5	4.0	-0.9	2.7	-3.1	2.6	-0.9	-3.3	-3.4	1.5	-2.8	-7.4
Quincy	Rain	5.2	1.2	12.8	4.1	6.6	4.5	11.0	7.2	1.6	0.4	3.0	2.2	59.8
	Hist Avg	5.0	4.3	5.6	3.7	4.2	5.2	6.3	6.2	4.1	3.4	3.3	3.7	55.0
	Deviation	0.2	-3.1	7.2	0.4	2.4	-0.7	4.7	1.0	-2.5	-3.0	-0.3	-1.5	4.8
Carrabelle	Rain	2.3	0.7	9.5	1.3	5.0	6.6	7.6	6.2	5.7	1.7	2.7	2.2	51.5
	Hist Avg	3.8	3.7	4.9	3.0	2.7	5.3	7.3	7.9	7.3	3.7	3.2	3.0	55.8
	Deviation	-1.5	-3.0	4.6	-1.7	2.3	1.3	0.3	-1.7	-1.6	-2.1	-0.6	-0.8	-4.3
Marianna	Rain	5.2	1.1	11.2	5.8	7.8	1.6	5.8	4.8	0.5	2.1	2.8	1.9	50.8
	Hist Avg	4.9	5.1	5.4	4.4	3.5	5.0	6.1	5.4	4.4	2.8	3.3	4.4	54.7
	Deviation	0.3	-3.9	5.9	1.4	4.3	-3.3	-0.3	-0.6	-3.9	-0.7	-0.5	-2.5	-3.9
DeFuniak	Rain	4.5	0.6	7.4	3.8	5.2	5.6	10.8	5.5	1.8	2.7	2.8	3.5	54.4
	Hist Avg	4.9	5.4	5.6	3.9	4.5	7.1	7.2	6.3	5.7	3.7	4.8	4.5	63.7
	Deviation	-0.4	-4.8	1.8	-0.1	0.7	-1.6	3.6	-0.8	-3.8	-1.0	-2.0	-1.0	-9.3
Jay	Rain	2.3	3.0	7.2	5.4	10.0	4.2	10.3	7.8	0.4	0.8	3.0	4.8	59.1
	Hist Avg	5.5	5.3	6.6	4.8	4.8	5.8	7.0	6.2	5.5	3.3	5.1	4.7	64.6
	Deviation	-3.2	-2.3	0.6	0.6	5.2	-1.6	3.3	1.6	-5.1	-2.5	-2.1	0.1	-5.5
6 Station Average		4.0	1.3	9.7	3.9	6.8	4.2	9.2	6.2	2.0	1.3	3.1	2.6	54.4
6 Station Historic Average		4.8	4.7	5.7	4.0	3.9	5.7	6.8	6.5	5.4	3.4	3.8	4.0	58.6
Deviation from Avg		-0.8	-3.4	4.0	0.0	2.9	-1.5	2.4	-0.2	-3.4	-2.1	-0.7	-1.4	-4.3

**Panhandle FAWN Station  
2022 Rainfall vs Historic Average**



FAWN Station	Monticello	Quincy	Carrabelle	Marianna	DeFuniak	Jay	Average
Rainfall	50.7	59.8	51.5	50.8	54.4	59.1	54.4
Historic Average	58.1	55.0	55.8	54.7	63.7	64.6	58.6