



Jackson County 2023 Weather Data

72 Years of Weather Data Recorded at the UF/IFAS Marianna North Florida Research and Education Center



Doug Mayo
Jackson County Extension Director
2009-2023 Weather Data

Ed Jowers, Emeritus County Extension Director
1952-2008 Rainfall Data

Data provided by Florida Automated Weather Station (FAWN)
UF/IFAS North Florida Research and Education Center
Greenwood, Florida



<http://fawn.ifas.ufl.edu/>

Tower Name	Tower Number	Latitude Degree, Minutes	Latitude Degrees, Minutes, Seconds	Latitude Degrees Decimal	Longitude Degree, Minutes	Longitude Degrees, Minutes, Seconds	Longitude Degrees Decimal	Elevation Feet
Marianna	130.00	N 30°51.000'	N 30°50'00.00"	N 30.85000°	-85°09.910'	-85°09'54.60"	-85.16516°	115'

2023 UF/IFAS FAWN Marianna Weather Summary

Month	Rainfall Inches	Dev from Hist Avg	6' Air Temp			Soil Temp			Wind MPH	
			High	Low	Avg	High	Low	Avg	Avg	High
January	3.29	-1.62	81	28	57	72	47	59	5.4	33.3
February	1.89	-3.15	84	33	62	76	50	63	5.8	36.4
March	5.03	-0.35	85	33	64	80	49	68	5.6	45.3
April	5.69	1.27	89	45	69	86	60	73	5.0	36.8
May	1.68	-1.84	94	51	74	94	64	79	4.4	28.8
June	4.65	-0.30	96	66	79	99	74	84	4.6	60.6
July	6.58	0.44	98	72	82	101	77	87	3.9	49.6
August	3.29	-2.04	101	72	84	100	80	90	4.0	47.6
September	3.43	-0.95	94	58	78	96	72	83	3.1	27.8
October	0.86	-1.92	89	43	69	89	62	74	4.0	29.9
November	2.94	-0.37	83	30	59	78	45	65	4.0	25.7
December	7.10	2.68	79	31	54	69	42	56	4.9	43.3
2023	46.43	-8.14	101	28	69	101	42	73	4.5	60.6

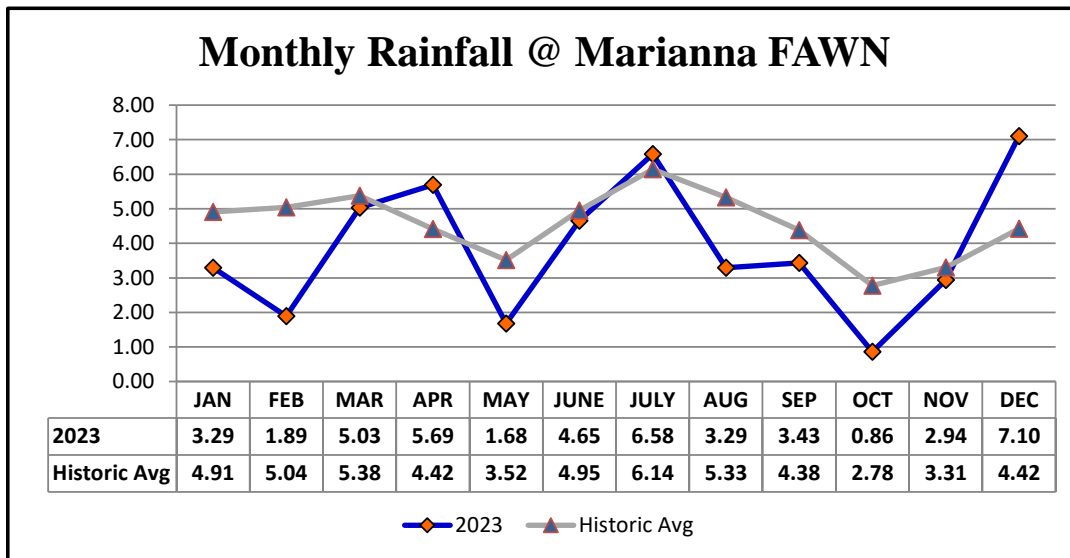
Total days <32°

6

Total days >95°

28

Data source: UF/IFAS Florida Automated Weather Network Marianna Station



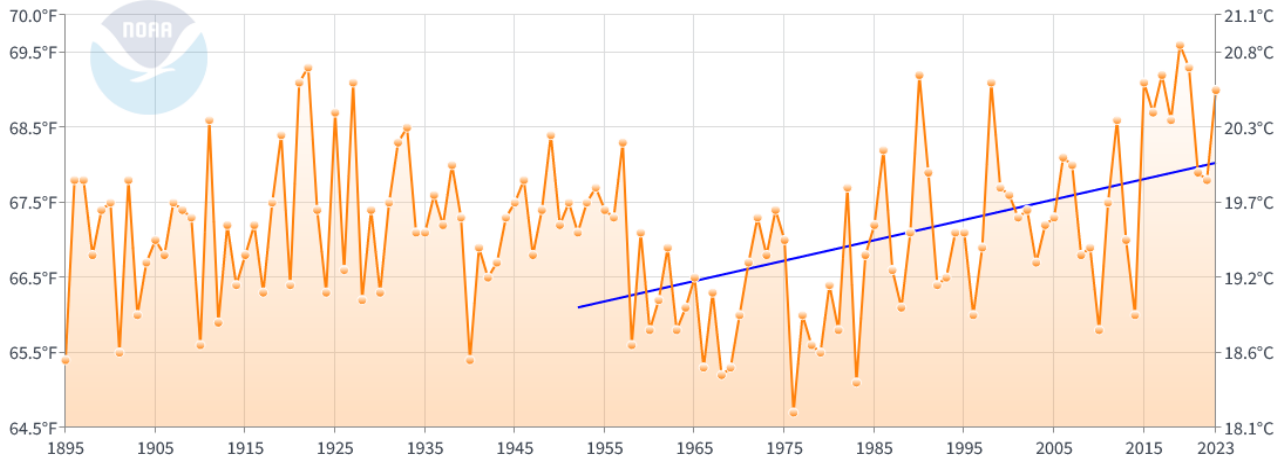
Jackson County Annual Average Temperature by Year

	2023	2022	2021	2020	2019	2018	2017	2016	2015	2014
Marianna FAWN	69	68	68	69	70	67	68	68	68	65
NOAA Avg	67.1	67.1	67.1	67.1	67.1	67.1	67.1	67.1	67.1	67.1
Deviation	1.9	0.9	0.9	1.9	2.9	-0.1	0.9	0.9	0.9	-2.1
NOAA JaCo	69	67.8	67.9	69.3	69.6	68.6	69.2	68.7	69.1	66.0
NOAA Avg	67.1	67.1	67.1	67.1	67.1	67.1	67.1	67.1	67.1	67.1
Deviation	1.9	0.7	0.8	2.2	2.5	1.5	2.1	1.6	2	-1.1

Jackson County, Florida Average Temperature

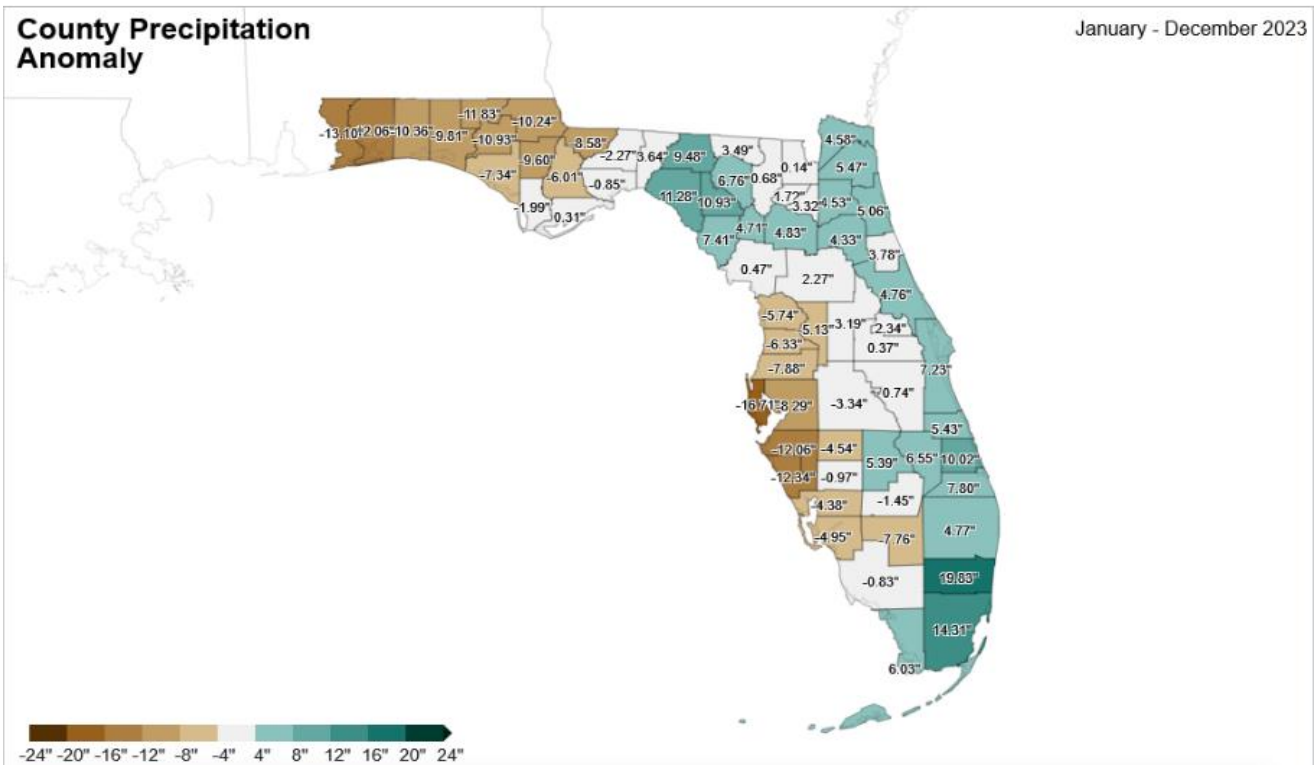
January-December

1952-2023 Trend
(+0.3°F/Decade)



County Precipitation Anomaly

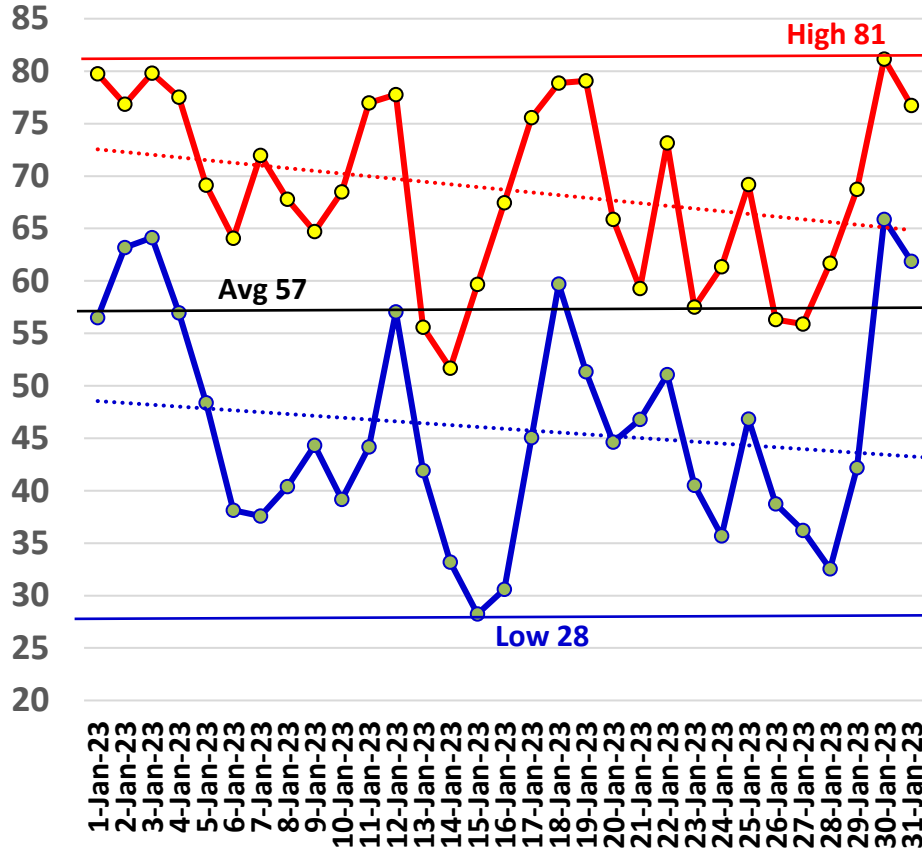
January - December 2023



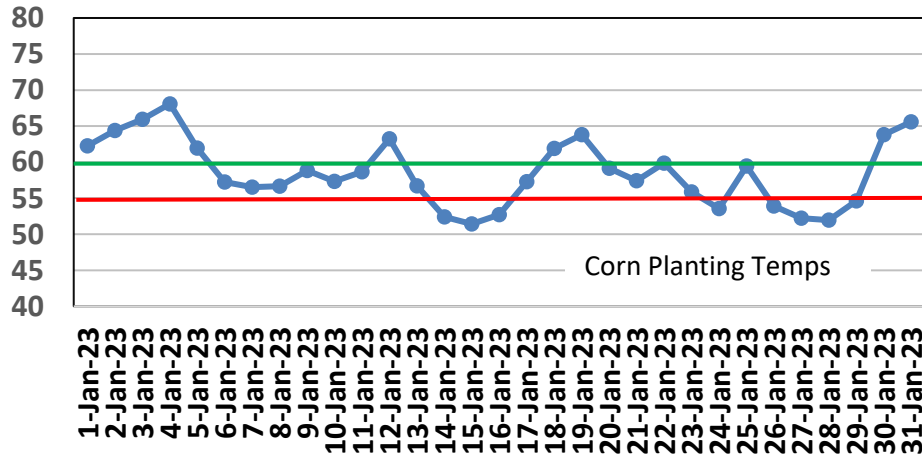
January Daily Weather Data

Temperature							Precipitation		Wind			
	Air Temp 6 ft			Soil Temp 4 inch			Rain	Evapo Transpo	Avg Wind	Min Wind	Max Wind	
Date	Avg	Min	Max	Avg	Min	Max	Inches	Inches	mph	mph	mph	
1-Jan-23	65	57	80	62	59	67	0.00	0.06	2.2	0.0	13.7	
2-Jan-23	68	63	77	64	62	68	0.00	0.06	4.8	0.1	17.5	
3-Jan-23	71	64	80	66	63	69	0.01	0.06	8.6	0.6	27.7	
4-Jan-23	70	57	78	68	64	72	0.32	0.06	6.4	0.2	33.3	
5-Jan-23	58	48	69	62	58	65	0.00	0.05	5.7	0.1	20.9	
6-Jan-23	51	38	64	57	54	61	0.00	0.04	3.4	0.0	16.1	
7-Jan-23	53	38	72	57	52	62	0.00	0.05	1.6	0.0	11.4	
8-Jan-23	55	40	68	57	52	60	0.00	0.05	2.2	0.0	13.3	
9-Jan-23	56	44	65	59	57	62	0.00	0.05	4.5	0.0	15.3	
10-Jan-23	53	39	69	57	53	62	0.00	0.05	2.5	0.0	12.3	
11-Jan-23	61	44	77	59	54	63	0.00	0.06	5.2	0.0	23.1	
12-Jan-23	69	57	78	63	61	66	0.08	0.07	9.8	0.6	31.6	
13-Jan-23	48	42	56	57	52	63	0.00	0.05	12.4	0.8	31.4	
14-Jan-23	43	33	52	52	50	55	0.00	0.04	9.4	0.1	27.2	
15-Jan-23	42	28	60	51	47	57	0.00	0.04	2.5	0.0	10.3	
16-Jan-23	49	31	67	53	48	58	0.00	0.04	3.0	0.0	12.4	
17-Jan-23	64	45	76	57	53	61	0.00	0.07	7.3	0.1	30.7	
18-Jan-23	68	60	79	62	59	66	0.01	0.07	5.7	0.1	22.3	
19-Jan-23	67	51	79	64	61	68	0.28	0.07	7.3	0.3	24.7	
20-Jan-23	54	45	66	59	56	63	0.00	0.05	3.9	0.0	13.7	
21-Jan-23	53	47	59	57	56	59	0.02	0.05	4.2	0.0	17.5	
22-Jan-23	60	51	73	60	56	64	1.04	0.06	8.5	0.2	30.0	
23-Jan-23	49	41	58	56	53	59	0.00	0.05	5.8	0.0	22.2	
24-Jan-23	49	36	61	54	49	58	0.00	0.05	4.7	0.0	20.8	
25-Jan-23	62	47	69	59	56	62	1.45	0.06	9.1	0.1	32.1	
26-Jan-23	46	39	56	54	50	58	0.00	0.05	6.2	0.1	19.2	
27-Jan-23	44	36	56	52	48	58	0.00	0.05	2.9	0.0	14.2	
28-Jan-23	46	33	62	52	47	58	0.00	0.05	2.9	0.0	14.9	
29-Jan-23	57	42	69	55	51	59	0.02	0.06	4.0	0.0	16.7	
30-Jan-23	72	66	81	64	59	68	0.00	0.09	6.0	0.0	22.1	
31-Jan-23	69	62	77	66	63	69	0.06	0.07	2.4	0.0	11.1	
High			81			72		High			33.3	
Low		28			47			Low		0.0		
Average	57	46	69	59	55	63		Average	5.4			
Days over 95 ^u				0			Total for Month		3.29	1.73		
							# of Rain Days		10			
							Historic Average		4.91			
Days below 32 ^v				2			Deviation from Avg		-1.62			
Net Gain/loss (Rain - ET)								1.56				

Jan Marianna FAWN 6' Air Temps



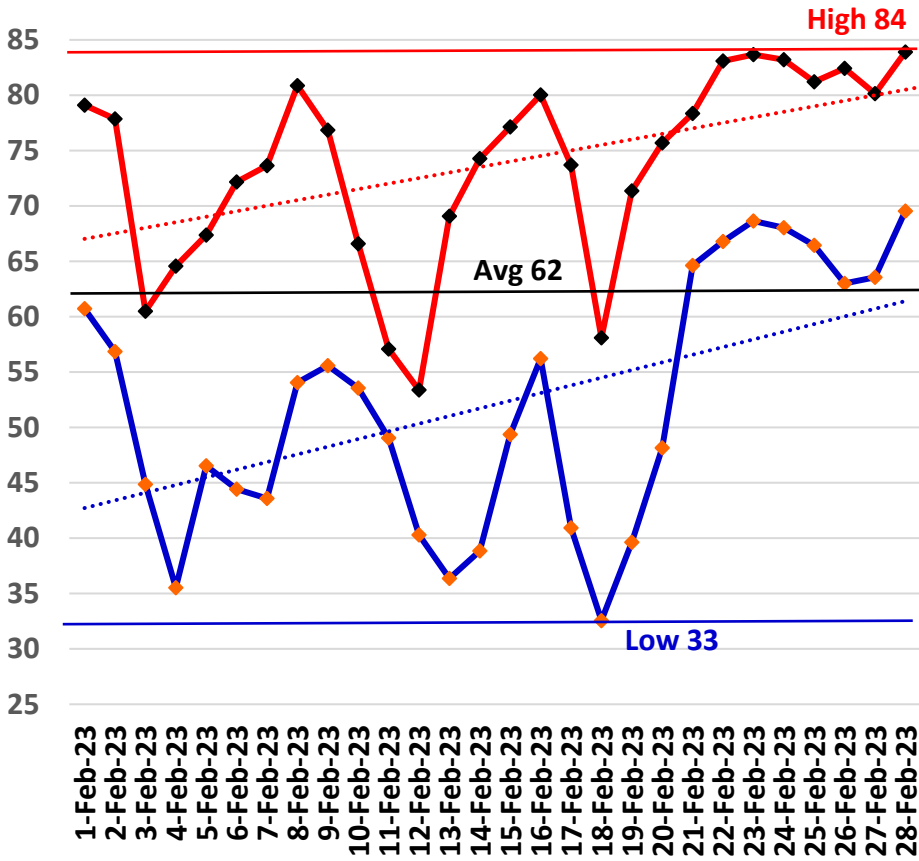
January Avg Soil Temps Marianna



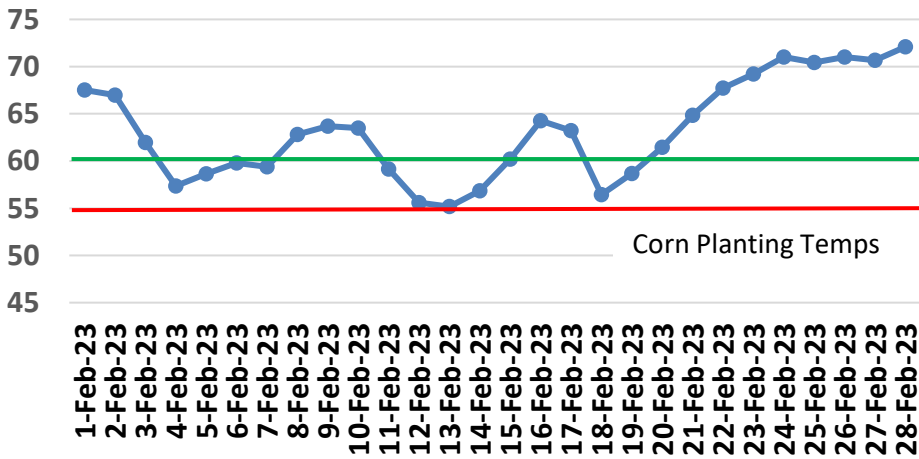
February Daily Weather Data

Date	Temperature						Precipitation		Wind		
	Air Temp 6 ft			Soil Temp 4 inch			Rain	Evapo Trans	Avg Wind	Min Wind	Max Wind
	Avg	Min	Max	Avg	Min	Max	Inches	Inches	mph	mph	mph
1-Feb-23	69	61	79	68	65	72	0.00	0.08	3.5	0.1	11.3
2-Feb-23	67	57	78	67	65	70	0.06	0.08	5.5	0.0	21.7
3-Feb-23	53	45	60	62	57	66	0.12	0.07	10.0	0.7	23.9
4-Feb-23	50	36	65	57	52	63	0.00	0.07	3.7	0.0	16.2
5-Feb-23	54	47	67	59	55	63	0.00	0.07	2.0	0.0	11.2
6-Feb-23	57	44	72	60	55	65	0.00	0.08	2.3	0.0	14.2
7-Feb-23	59	44	74	59	55	63	0.00	0.08	4.7	0.0	20.3
8-Feb-23	66	54	81	63	58	68	0.00	0.10	5.3	0.0	17.5
9-Feb-23	67	56	77	64	61	66	0.00	0.08	5.3	0.1	20.8
10-Feb-23	61	54	67	64	61	65	0.39	0.05	4.6	0.0	25.1
11-Feb-23	54	49	57	59	57	61	1.18	0.05	5.7	0.1	34.6
12-Feb-23	48	40	53	56	53	57	0.01	0.06	9.4	0.0	32.8
13-Feb-23	51	36	69	55	50	61	0.00	0.08	4.1	0.0	15.2
14-Feb-23	56	39	74	57	52	63	0.00	0.09	4.6	0.0	19.4
15-Feb-23	64	49	77	60	55	65	0.00	0.09	5.6	0.2	20.5
16-Feb-23	69	56	80	64	60	68	0.00	0.10	7.6	0.1	26.1
17-Feb-23	59	41	74	63	57	66	0.13	0.09	11.5	0.7	30.0
18-Feb-23	44	33	58	56	51	62	0.00	0.07	4.6	0.0	19.7
19-Feb-23	55	40	71	59	53	65	0.00	0.09	2.8	0.0	15.3
20-Feb-23	63	48	76	61	57	66	0.00	0.10	6.0	0.1	22.3
21-Feb-23	71	65	78	65	62	68	0.00	0.09	7.6	0.2	29.0
22-Feb-23	74	67	83	68	65	72	0.00	0.12	9.0	0.6	36.4
23-Feb-23	75	69	84	69	67	72	0.00	0.09	7.0	0.1	23.3
24-Feb-23	74	68	83	71	68	75	0.00	0.11	4.3	0.1	14.9
25-Feb-23	72	66	81	70	69	73	0.00	0.09	4.9	0.2	17.2
26-Feb-23	71	63	82	71	68	76	0.00	0.11	4.7	0.1	15.9
27-Feb-23	72	64	80	71	68	74	0.00	0.10	8.4	0.4	29.1
28-Feb-23	75	70	84	72	69	76	0.00	0.11	7.5	0.0	21.2
High			84			76		High			36.4
Low		33			50			Low		0.0	
Average	62	52	74	63	59	67		Average	5.8		
Days over 95 ^u				Total for Month			1.89	2.40	Cumulative for Year		
				# of Rain Days			6		Rain	5.2	
Days below 32 ^u				Historic Average			5.04		Avg	9.9	
				Deviation from Avg			-3.15		Dev	-4.8	
				Net Gain/loss (Rain - ET)				-0.51	Net	1.1	

February Marianna FAWN 6' Air Temps



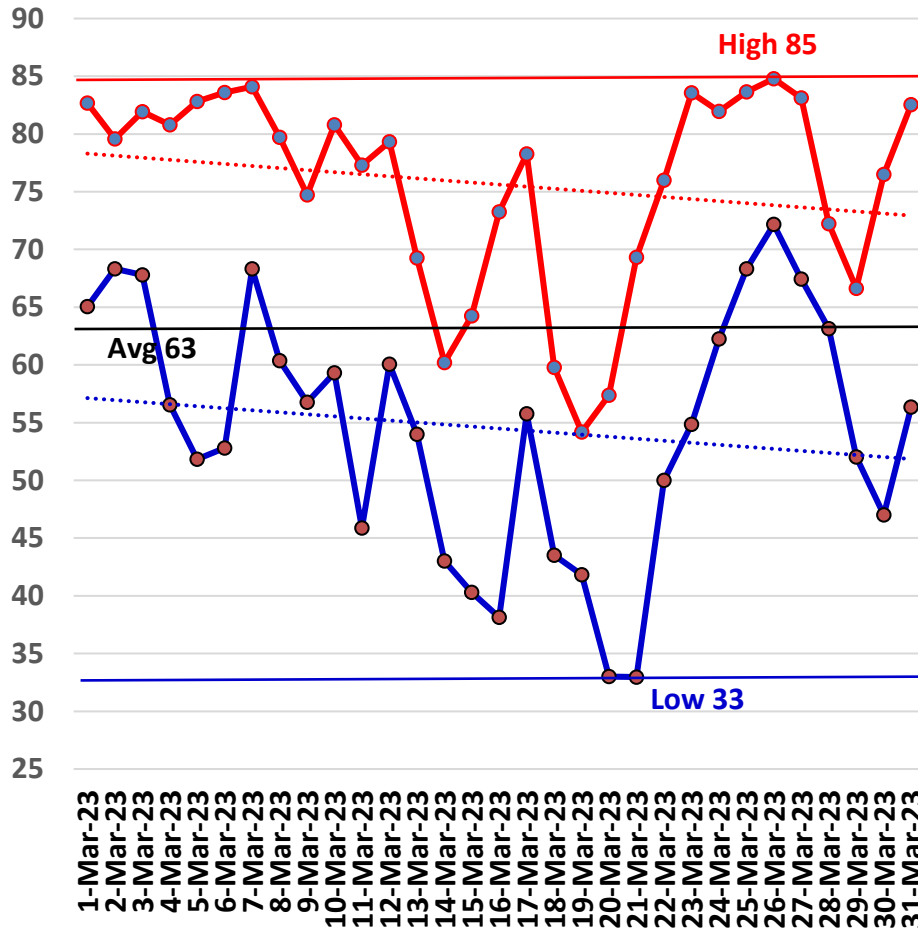
February Avg Soil Temps Marianna



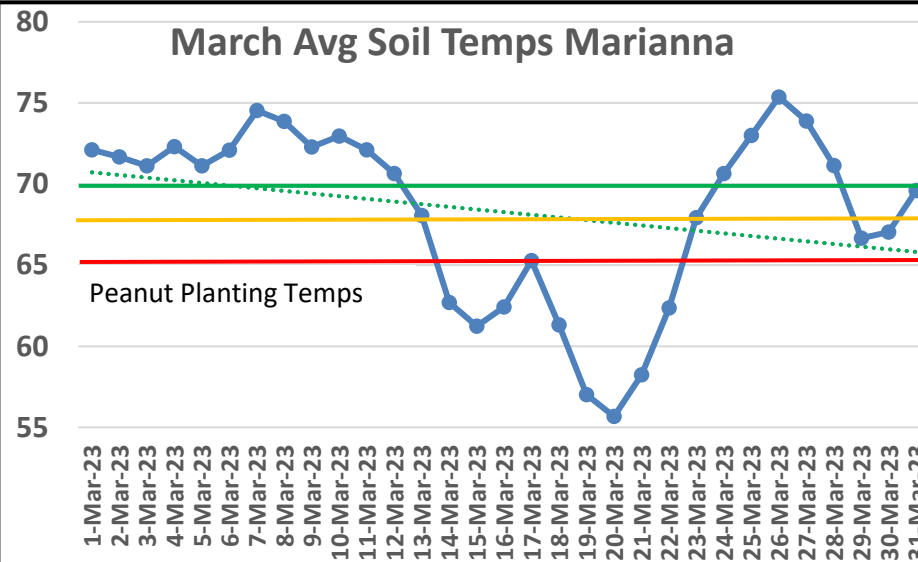
March Daily Weather Data

Date	Temperature						Precipitation		Wind		
	Air Temp 6 ft			Soil Temp 4 inch			Rain	Evapo Trans	Avg Wind	Min Wind	Max Wind
	Avg	Min	Max	Avg	Min	Max	Inches	Inches	mph	mph	mph
1-Mar-23	73	65	83	72	70	75	0.00	0.10	5.2	0.1	19.7
2-Mar-23	72	68	80	72	70	75	0.22	0.08	5.1	0.0	18.9
3-Mar-23	74	68	82	71	69	73	0.00	0.09	10.8	0.4	45.3
4-Mar-23	70	57	81	72	68	79	0.00	0.12	4.1	0.1	16.2
5-Mar-23	66	52	83	71	65	79	0.00	0.12	2.3	0.0	11.9
6-Mar-23	69	53	84	72	66	79	0.00	0.11	3.6	0.0	15.3
7-Mar-23	74	68	84	75	71	80	0.00	0.12	5.7	0.2	16.5
8-Mar-23	69	60	80	74	69	80	0.00	0.12	3.1	0.0	20.4
9-Mar-23	67	57	75	72	69	76	0.00	0.09	5.5	0.0	18.2
10-Mar-23	71	59	81	73	70	77	0.00	0.10	8.3	0.4	23.3
11-Mar-23	62	46	77	72	66	79	0.00	0.11	3.1	0.0	10.7
12-Mar-23	66	60	79	71	69	74	1.53	0.08	5.7	0.0	43.8
13-Mar-23	61	54	69	68	64	73	0.25	0.10	7.3	0.3	22.8
14-Mar-23	51	43	60	63	58	69	0.00	0.09	7.0	0.7	21.1
15-Mar-23	50	40	64	61	55	69	0.00	0.10	4.3	0.0	17.9
16-Mar-23	56	38	73	62	55	71	0.00	0.11	5.3	0.0	17.7
17-Mar-23	67	56	78	65	61	70	0.97	0.10	8.7	0.1	29.0
18-Mar-23	51	44	60	61	57	66	0.00	0.07	9.2	0.2	24.7
19-Mar-23	47	42	54	57	52	63	0.00	0.08	7.8	0.3	23.9
20-Mar-23	44	33	57	56	49	64	0.00	0.09	5.9	0.0	18.7
21-Mar-23	51	33	69	58	50	68	0.00	0.10	2.9	0.0	17.3
22-Mar-23	61	50	76	62	57	70	0.00	0.10	2.8	0.0	10.2
23-Mar-23	68	55	84	68	61	77	0.00	0.13	3.8	0.0	16.3
24-Mar-23	71	62	82	71	66	77	0.00	0.13	6.2	0.0	23.4
25-Mar-23	76	68	84	73	69	79	0.01	0.13	8.3	0.1	27.8
26-Mar-23	77	72	85	75	72	80	0.00	0.14	7.8	0.2	24.4
27-Mar-23	73	67	83	74	72	79	1.40	0.10	5.7	0.0	25.5
28-Mar-23	68	63	72	71	69	73	0.64	0.06	3.4	0.0	18.3
29-Mar-23	60	52	67	67	61	71	0.00	0.10	5.5	0.1	20.4
30-Mar-23	62	47	77	67	59	76	0.01	0.13	2.9	0.0	16.8
31-Mar-23	70	56	83	70	63	77	0	0.14	7.9	0.1	24.9
High			85			80					45.3
Low		33			49					0.0	
Average	64	54	76	68	64	74			5.6		
Days over 95 ^o	0			Total for Month			5.03	3.24	Cumulative for Year		
				# of Rain Days			8		Rain	10.2	
Days below 32 ^o	0			Historic Average			5.38		Avg	15.3	
				Deviation from Avg			-0.35		Dev	-5.1	
Net Gain/loss (Rain - ET)							1.79		Net	1.1	

March Marianna FAWN 6' Air Temps



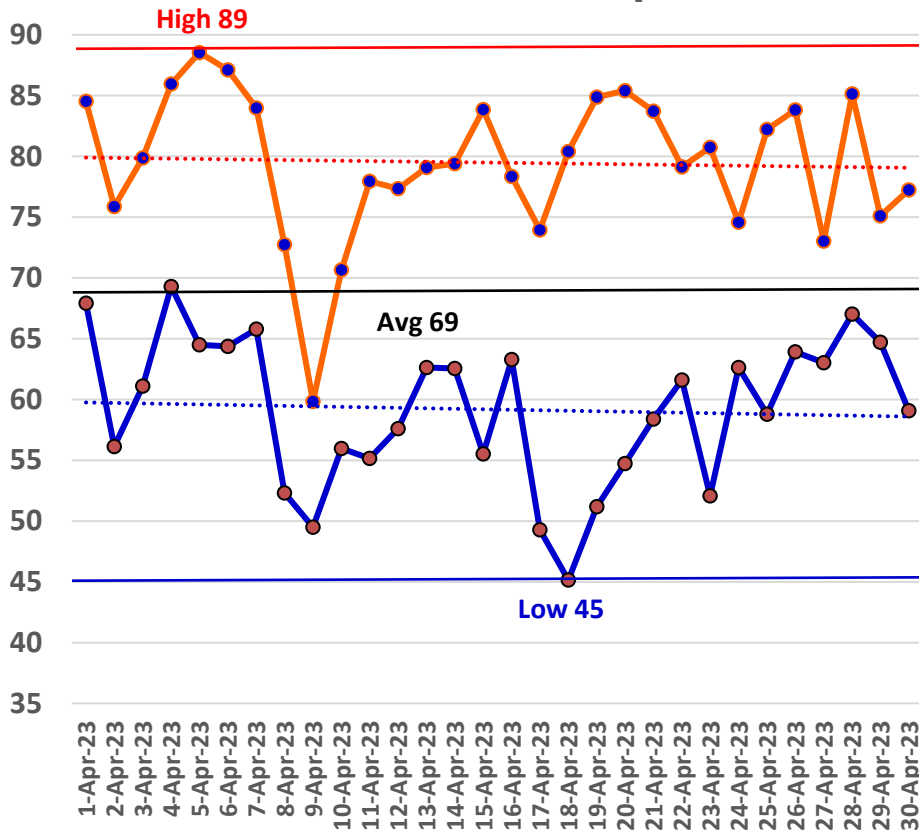
March Avg Soil Temps Marianna



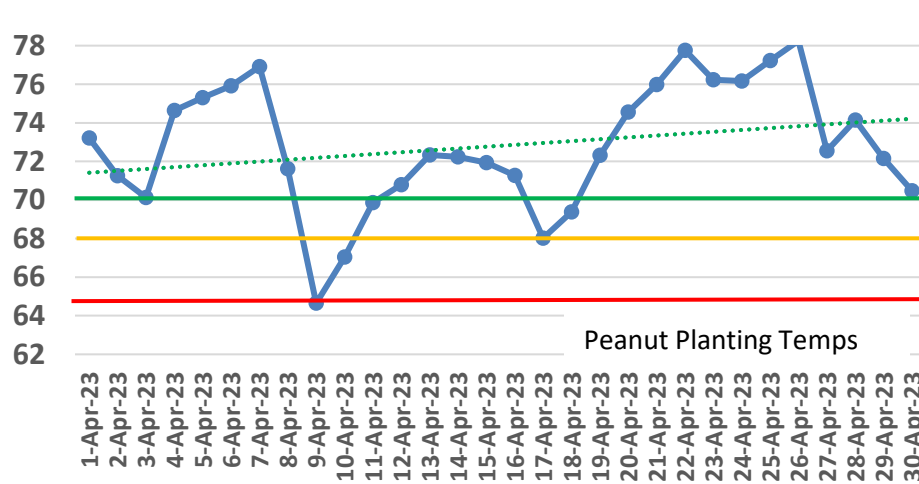
April Daily Weather Data

Temperature							Precipitation		Wind				
	Air Temp 6 ft			Soil Temp 4 inch			Rain	Evapo Trans	Avg Wind	Min Wind	Max Wind		
Date	Avg	Min	Max	Avg	Min	Max	Inches	Inches	mph	mph	mph		
1-Apr-23	74	68	85	73	69	80	0.18	0.14	7.3	0.1	31.6		
2-Apr-23	67	56	76	71	66	76	0.01	0.12	3.0	0.0	12.9		
3-Apr-23	70	61	80	70	67	75	0.59	0.09	5.8	0.0	26.5		
4-Apr-23	76	69	86	75	70	82	0.00	0.14	4.5	0.1	17.3		
5-Apr-23	75	65	89	75	69	82	0.00	0.16	4.4	0.1	21.5		
6-Apr-23	74	64	87	76	70	84	0.00	0.13	2.8	0.0	18.5		
7-Apr-23	75	66	84	77	71	84	0.00	0.14	2.9	0.0	12.8		
8-Apr-23	62	52	73	72	66	77	0.37	0.07	3.7	0.0	19.4		
9-Apr-23	55	49	60	65	62	67	0.00	0.07	4.2	0.0	21.1		
10-Apr-23	62	56	71	67	62	74	0.01	0.11	3.2	0.0	19.7		
11-Apr-23	67	55	78	70	63	79	0.00	0.14	3.2	0.0	18.2		
12-Apr-23	69	58	77	71	65	77	0.00	0.12	4.9	0.0	28.1		
13-Apr-23	71	63	79	72	67	79	0.15	0.15	9.2	0.1	25.3		
14-Apr-23	69	63	79	72	68	79	0.46	0.15	5.4	0.1	21.8		
15-Apr-23	69	56	84	72	65	82	0.99	0.15	4.4	0.0	34.2		
16-Apr-23	69	63	78	71	68	77	0.14	0.11	5.7	0.1	20.6		
17-Apr-23	63	49	74	68	61	76	0.00	0.15	6.7	0.1	24.0		
18-Apr-23	64	45	80	69	60	80	0.00	0.15	2.8	0.0	14.1		
19-Apr-23	69	51	85	72	64	83	0.00	0.16	3.9	0.0	16.5		
20-Apr-23	71	55	85	75	66	84	0.00	0.17	4.3	0.0	18.9		
21-Apr-23	72	58	84	76	69	85	0.00	0.16	5.3	0.1	19.8		
22-Apr-23	71	62	79	78	73	85	0.00	0.17	6.3	0.0	20.8		
23-Apr-23	68	52	81	76	68	86	0.00	0.16	4.1	0.0	20.3		
24-Apr-23	68	63	75	76	72	82	0.00	0.13	5.8	0.0	19.8		
25-Apr-23	71	59	82	77	70	85	0.00	0.16	3.7	0.0	19.4		
26-Apr-23	73	64	84	78	73	86	0.00	0.14	4.2	0.0	17.4		
27-Apr-23	67	63	73	73	69	77	2.15	0.05	5.2	0.0	36.8		
28-Apr-23	74	67	85	74	69	82	0.01	0.17	5.5	0.1	22.7		
29-Apr-23	68	65	75	72	70	75	0.51	0.08	4.5	0.1	20.1		
30-Apr-23	68	59	77	70	66	76	0.12	0.16	12.1	0.5	31.3		
High			89			86					36.8		
Low		45			60					0.0			
Average	69	59	79	73	67	80			5.0				
Days over 95 ^u 0				Total for Month			5.69	4.00	Cumulative for Year				
							# of Rain Days			13		Rain	15.9
							Historic Average			4.42		Avg	19.7
							Deviation from Avg			1.27		Dev	-3.8
Days below 32 ^u 0				Net Gain/loss (Rain - ET)			1.69		Net	1.1			

April Marianna FAWN 6' Air Temps



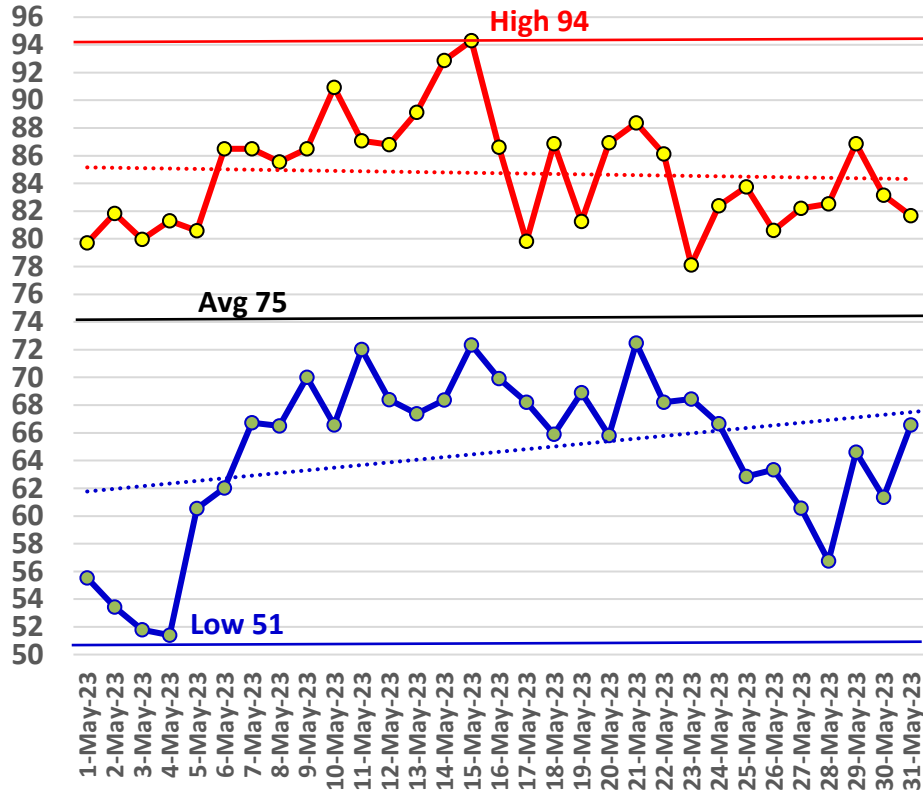
April Avg Soil Temps Marianna



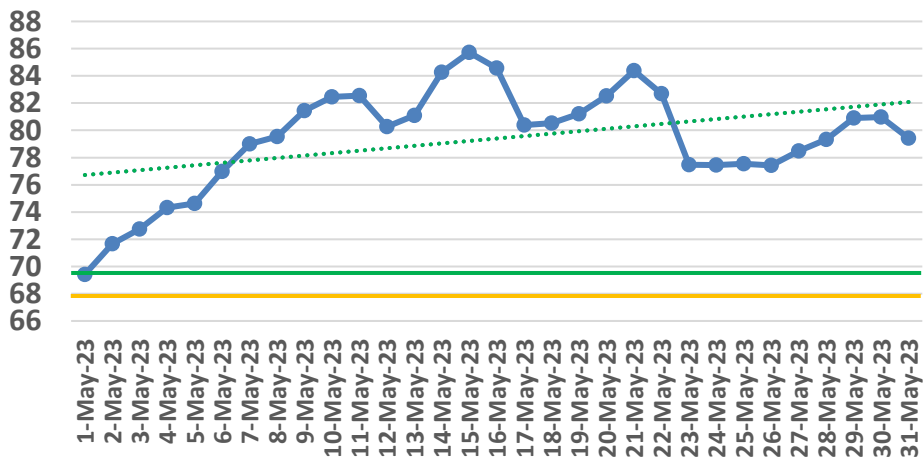
May Daily Weather Data

Date	Temperature						Precipitation		Wind		
	Air Temp 6 ft			Soil Temp 4 inch			Rain	Evapo Trans	Avg Wind	Min Wind	Max Wind
	Avg	Min	Max	Avg	Min	Max	Inches	Inches	mph	mph	mph
1-May-23	67	56	80	69	64	77	0.66	0.16	8.0	0.0	26.4
2-May-23	68	53	82	72	64	80	0.00	0.17	6.5	0.0	27.7
3-May-23	68	52	80	73	66	81	0.00	0.17	6.3	0.1	25.0
4-May-23	68	51	81	74	67	83	0.00	0.16	2.5	0.0	14.8
5-May-23	71	61	81	75	71	79	0.00	0.12	3.7	0.0	16.6
6-May-23	75	62	87	77	71	84	0.00	0.16	3.7	0.0	18.5
7-May-23	76	67	87	79	74	85	0.00	0.16	5.9	0.1	18.2
8-May-23	74	66	86	80	75	87	0.00	0.15	4.5	0.0	18.2
9-May-23	77	70	87	81	76	88	0.00	0.17	5.3	0.1	19.1
10-May-23	79	67	91	82	76	90	0.00	0.17	2.7	0.0	12.7
11-May-23	79	72	87	83	79	87	0.00	0.15	6.1	0.1	18.9
12-May-23	74	68	87	80	77	85	0.00	0.11	4.3	0.0	24.1
13-May-23	77	67	89	81	74	90	0.00	0.19	3.3	0.0	17.2
14-May-23	81	68	93	84	78	92	0.00	0.20	2.9	0.0	14.4
15-May-23	80	72	94	86	80	94	0.09	N/A	3.6	0.0	23.1
16-May-23	76	70	87	85	80	91	0.00	0.15	4.5	0.0	19.3
17-May-23	73	68	80	80	78	83	0.04	0.10	3.8	0.0	28.8
18-May-23	74	66	87	81	75	88	0.09	0.16	3.6	0.0	25.1
19-May-23	74	69	81	81	78	86	0.00	0.13	3.3	0.0	13.3
20-May-23	76	66	87	83	77	89	0.00	0.17	3.3	0.0	20.0
21-May-23	79	72	88	84	79	91	0.02	0.18	4.7	0.0	16.0
22-May-23	74	68	86	83	77	90	0.77	0.12	4.6	0.0	25.8
23-May-23	73	68	78	77	75	80	0.01	0.10	3.9	0.0	16.6
24-May-23	73	67	82	77	74	82	0.00	0.14	2.9	0.0	14.3
25-May-23	74	63	84	78	72	85	0.00	0.18	4.1	0.0	19.3
26-May-23	73	63	81	77	73	83	0.00	N/A	3.6	0.1	20.5
27-May-23	71	61	82	78	72	86	0.00	N/A	5.6	0.0	20.9
28-May-23	70	57	83	79	73	87	0.00	N/A	4.2	0.0	17.7
29-May-23	76	65	87	81	75	87	0.00	0.18	7.1	0.7	23.6
30-May-23	74	61	83	81	76	86	0.00	0.15	2.5	0.0	14.6
31-May-23	72	67	82	79	77	83	0	0.10	3.4	0.0	20.6
High			94			94					28.8
Low		51			64					0.0	
Average	74	65	85	79	74	86			4.4		
				Total for Month			1.68	4.10	Cumulative for Year		
Days over 95 ^u				0			# of Rain Days	7	Rain	17.6	
Days of 100 ^u				0			Historic Average	3.52	Avg	23.3	
Days below 32 ^u				0			Deviation from Avg	-1.84	Dev	-5.7	
Net Gain/loss (Rain - ET)								-2.42	Net	1.1	

May Marianna FAWN 6' Air Temps



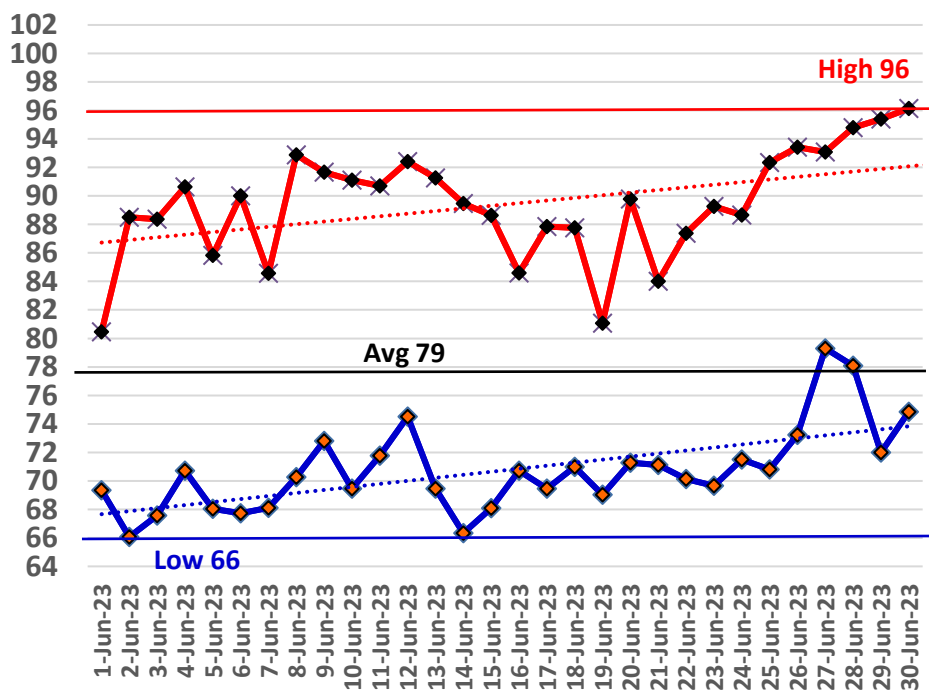
May Avg Soil Temps Marianna



June Daily Weather Data

Date	Temperature						Precipitation		Wind		
	Air Temp 6 ft			Soil Temp 4 inch			Rain	Evapo Trans	Avg Wind	Min Wind	Max Wind
	Avg	Min	Max	Avg	Min	Max	Inches	Inches	mph	mph	mph
1-Jun-23	74	69	80	78	75	81	0.00	0.11	2.4	0.0	14.4
2-Jun-23	78	66	89	81	74	89	0.00	0.19	3.3	0.0	19.8
3-Jun-23	79	68	88	83	77	90	0.00	0.18	3.6	0.0	19.5
4-Jun-23	80	71	91	85	79	94	0.00	0.20	3.6	0.0	20.7
5-Jun-23	76	68	86	86	80	93	0.00	0.18	3.2	0.0	14.3
6-Jun-23	76	68	90	85	80	93	0.00	0.17	3.6	0.0	31.1
7-Jun-23	76	68	85	85	80	91	0.00	0.17	4.5	0.0	27.3
8-Jun-23	81	70	93	87	81	95	0.00	0.21	6.4	0.1	21.6
9-Jun-23	81	73	92	89	83	96	0.00	0.20	4.3	0.1	18.3
10-Jun-23	79	69	91	88	83	95	0.00	0.18	3.8	0.0	18.4
11-Jun-23	80	72	91	88	84	95	0.00	0.18	5.4	0.1	22.3
12-Jun-23	81	75	92	88	84	93	0.05	0.19	6.3	0.1	35.9
13-Jun-23	76	69	91	85	81	92	0.06	0.15	5.0	0.0	24.1
14-Jun-23	78	66	89	83	78	88	0.81	0.16	8.0	0.2	60.6
15-Jun-23	73	68	89	78	76	83	0.80	0.10	5.6	0.0	30.7
16-Jun-23	77	71	85	78	75	82	0.01	0.15	7.7	0.0	38.1
17-Jun-23	77	69	88	80	74	87	0.41	0.18	5.3	0.1	33.0
18-Jun-23	76	71	88	80	76	87	0.02	0.15	4.0	0.0	44.0
19-Jun-23	75	69	81	77	75	79	0.30	0.08	5.2	0.0	33.8
20-Jun-23	80	71	90	81	75	88	0.00	0.21	5.3	0.1	25.9
21-Jun-23	75	71	84	79	77	83	0.93	0.11	4.6	0.0	20.3
22-Jun-23	78	70	87	80	75	85	0.91	0.15	4.8	0.0	39.8
23-Jun-23	79	70	89	81	75	88	0.01	0.19	4.6	0.1	19.0
24-Jun-23	81	71	89	82	76	89	0.00	0.20	3.7	0.1	12.9
25-Jun-23	82	71	92	84	77	94	0.00	0.22	4.0	0.0	13.3
26-Jun-23	84	73	93	85	80	92	0.34	0.21	6.0	0.1	25.4
27-Jun-23	86	79	93	87	82	94	0.00	N/A	5.7	0.6	17.0
28-Jun-23	87	78	95	89	83	97	0.00	N/A	3.0	0.1	12.0
29-Jun-23	85	72	95	90	83	99	0.00	N/A	2.6	0.0	14.3
30-Jun-23	86	75	96	91	85	99	0	0.23	2.8	0.0	13.8
High			96			99					60.6
Low		66			74					0.0	
Average	79	71	89	84	79	90			4.6		
				Total for Month			4.65	4.65	Cumulative for Year		
Days over 95 ^u				2		# of Rain Days		12	Rain	22.2	
Days of 100 ^u				0		Historic Average		4.95	Avg	28.2	
Days below 32 ^u				0		Deviation from Avg		-0.30	Dev	-6.0	
Net Gain/loss (Rain - ET)								0.00	Net	1.1	

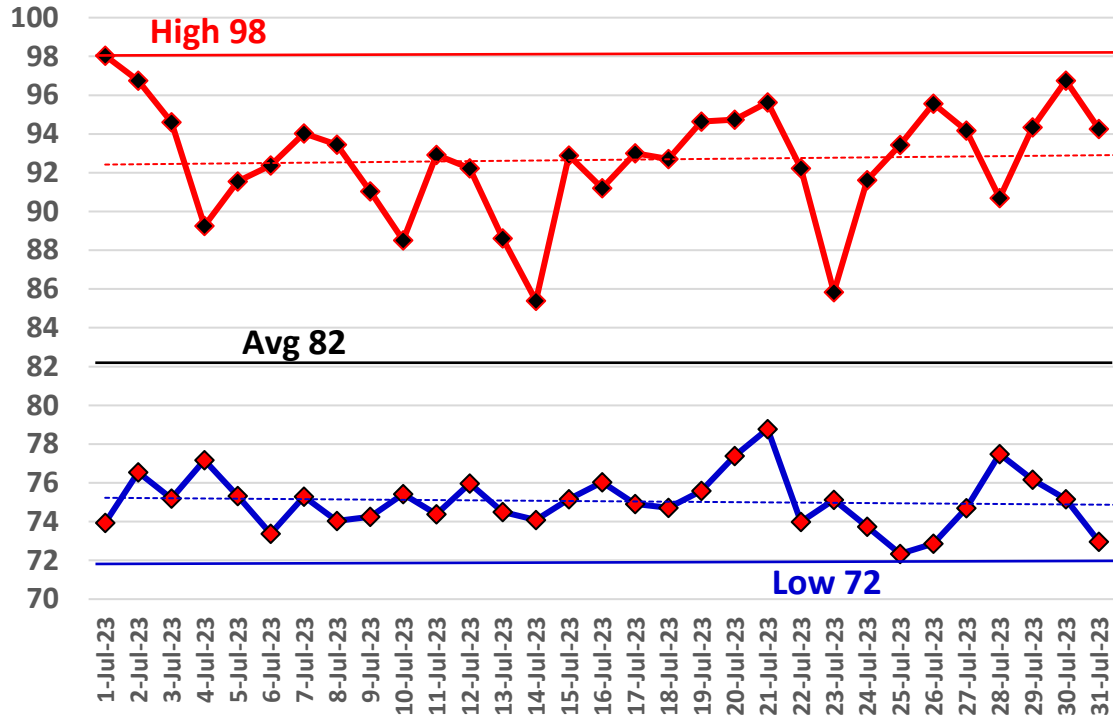
June Marianna FAWN 6' Air Temps



July Daily Weather Data

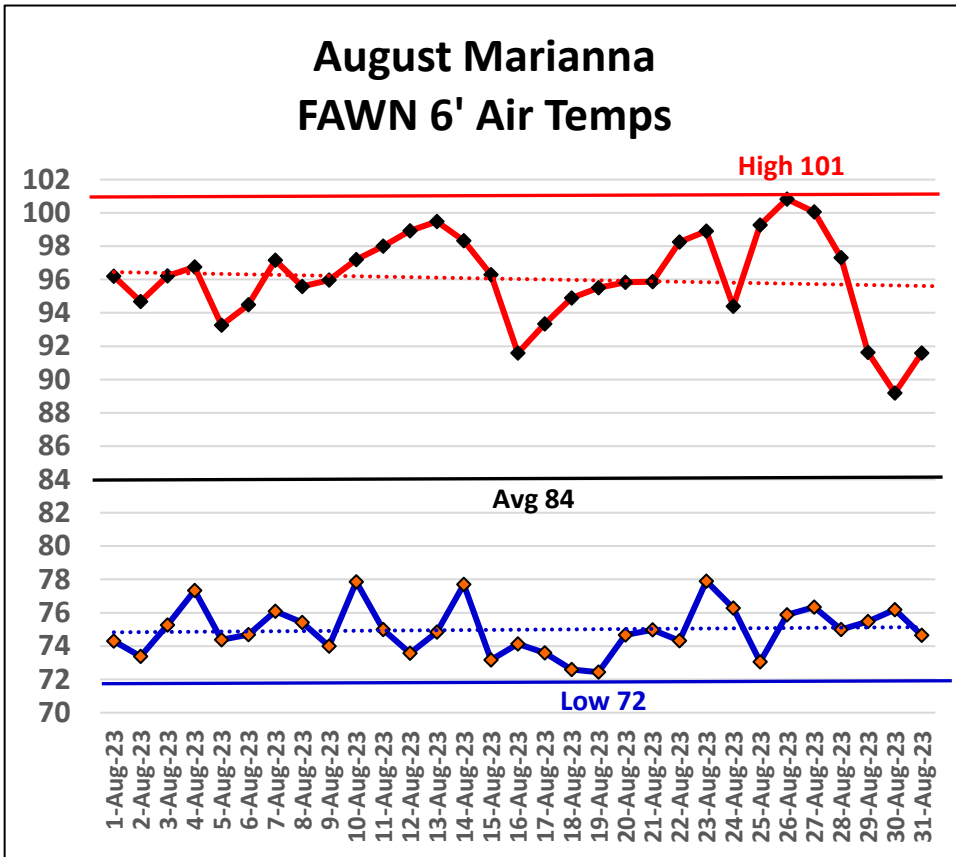
Temperature							Precipitation		Wind		
	Air Temp 6 ft			Soil Temp 4 inch			Rain	Evapo Trans	Avg Wind	Min Wind	Max Wind
Date	Avg	Min	Max	Avg	Min	Max	Inches	Inches	mph	mph	mph
1-Jul-23	87	74	98	92	86	101	0.00	0.23	3.5	0.0	20.1
2-Jul-23	84	77	97	93	87	100	0.00	0.20	4.3	0.0	19.9
3-Jul-23	85	75	95	92	86	99	0.00	N/A	3.9	0.0	21.6
4-Jul-23	82	77	89	90	87	92	0.08	0.16	3.3	0.1	23.1
5-Jul-23	80	75	92	87	84	93	0.09	0.15	3.8	0.0	19.2
6-Jul-23	82	73	92	87	81	95	0.00	0.21	5.2	0.0	19.2
7-Jul-23	82	75	94	89	84	97	0.07	0.21	5.3	0.0	21.3
8-Jul-23	81	74	93	88	82	97	0.00	0.21	6.0	0.1	49.6
9-Jul-23	80	74	91	87	84	92	0.09	0.16	4.9	0.1	36.1
10-Jul-23	81	75	89	85	81	89	0.51	0.16	6.6	0.1	26.1
11-Jul-23	83	74	93	86	80	94	0.00	0.22	3.6	0.0	16.0
12-Jul-23	82	76	92	87	83	95	0.06	0.19	4.1	0.0	27.3
13-Jul-23	78	75	89	84	82	88	0.44	0.14	4.2	0.0	32.2
14-Jul-23	78	74	85	81	77	84	3.41	0.10	4.4	0.1	17.1
15-Jul-23	81	75	93	84	79	90	0.02	0.18	4.1	0.0	23.6
16-Jul-23	80	76	91	83	81	88	0.43	0.13	4.1	0.0	31.0
17-Jul-23	83	75	93	85	80	91	0.00	0.19	3.1	0.0	25.8
18-Jul-23	84	75	93	86	81	92	0.00	0.20	2.4	0.0	12.6
19-Jul-23	85	76	95	87	82	94	0.00	0.21	3.1	0.0	12.3
20-Jul-23	86	77	95	89	84	96	0.10	0.21	3.4	0.1	11.4
21-Jul-23	87	79	96	90	85	97	0.00	0.22	5.1	0.1	14.6
22-Jul-23	81	74	92	87	82	92	1.05	0.11	4.6	0.0	38.3
23-Jul-23	79	75	86	84	81	89	0.05	0.13	4.2	0.0	21.9
24-Jul-23	81	74	92	85	80	92	0.00	0.20	3.5	0.0	17.0
25-Jul-23	83	72	93	86	80	93	0.00	0.20	2.5	0.0	10.7
26-Jul-23	84	73	96	88	82	95	0.00	0.22	2.3	0.0	13.9
27-Jul-23	83	75	94	88	84	93	0.06	0.16	2.2	0.0	22.4
28-Jul-23	83	77	91	87	84	92	0.05	0.13	1.7	0.0	8.5
29-Jul-23	84	76	94	88	83	95	0.02	0.21	3.1	0.0	19.0
30-Jul-23	83	75	97	89	84	97	0.05	0.21	4.6	0.0	24.9
31-Jul-23	83	73	94	89	84	96	0.00	0.20	3.4	0.0	13.9
High			98			101					49.6
Low		72			77					0.0	
Average	82	75	93	87	83	94			3.9		
Days over 95 ^o							Total for Month		Cumulative for Year		
Days of 100 ^o							# of Rain Days		Rain		
Days below 32 ^o							Historic Average		Avg		
							Deviation from Avg		Dev		
							Net Gain/loss (Rain - ET)		Net		

July Marianna FAWN 6' Air Temps



August Daily Weather Data

Date	Temperature						Precipitation		Wind			
	Air Temp 6 ft			Soil Temp 4 inch			Rain	Evapo Trans	Avg Wind	Min Wind	Max Wind	
	Avg	Min	Max	Avg	Min	Max	Inches	Inches	mph	mph	mph	
1-Aug-23	85	74	96	91	85	98	0.00	0.22	3.3	0.1	14.5	
2-Aug-23	84	73	95	91	86	97	0.00	0.19	2.8	0.0	16.0	
3-Aug-23	85	75	96	93	87	100	0.00	0.21	3.9	0.0	14.9	
4-Aug-23	85	77	97	93	88	99	0.00	0.2	5.5	0.0	36.6	
5-Aug-23	81	74	93	91	87	96	0.05	0.15	4.1	0.0	18.5	
6-Aug-23	83	75	94	90	85	95	0.00	0.17	4.3	0.0	19.6	
7-Aug-23	86	76	97	92	86	99	0.00	0.21	5.9	0.0	22.4	
8-Aug-23	84	75	96	92	88	97	0.00	0.17	5.9	0.1	27.7	
9-Aug-23	85	74	96	91	86	97	0.00	0.18	4.2	0.0	18.2	
10-Aug-23	87	78	97	93	87	100	0.00	0.22	6.9	0.1	24.8	
11-Aug-23	85	75	98	93	89	100	0.11	0.19	6.0	0.0	37.2	
12-Aug-23	83	74	99	90	85	98	0.53	0.18	4.0	0.0	33.9	
13-Aug-23	86	75	99	89	83	97	0.00	0.22	2.4	0.0	17.3	
14-Aug-23	85	78	98	90	85	96	0.29	0.2	4.2	0.0	24.8	
15-Aug-23	82	73	96	86	82	94	1.48	0.17	4.8	0.0	47.6	
16-Aug-23	82	74	92	85	80	92	0.00	0.17	3.4	0.0	15.4	
17-Aug-23	83	74	93	86	81	93	0.00	0.2	2.9	0.0	18.6	
18-Aug-23	84	73	95	87	81	94	0.00	0.2	3.1	0.0	15.6	
19-Aug-23	84	72	96	89	83	97	0.00	0.2	2.5	0.0	14.2	
20-Aug-23	84	75	96	90	84	98	0.00	0.2	3.7	0.0	25.9	
21-Aug-23	84	75	96	91	85	98	0.00	0.2	3.2	0.0	15.9	
22-Aug-23	86	74	98	92	86	99	0.00	0.19	2.8	0.0	11.4	
23-Aug-23	87	78	99	92	87	99	0.04	0.19	2.7	0.0	14.0	
24-Aug-23	85	76	94	92	86	99	0.00	0.2	2.7	0.0	15.5	
25-Aug-23	86	73	99	92	86	100	0.00	0.19	2.4	0.0	12.5	
26-Aug-23	88	76	101	93	88	99	0.00	0.19	5.2	0.1	20.7	
27-Aug-23	84	76	100	91	87	99	0.13	0.15	2.8	0.0	23.6	
28-Aug-23	84	75	97	89	83	98	0.00	0.18	3.5	0.0	21.4	
29-Aug-23	79	75	92	87	83	92	0.22	0.1	3.2	0.0	31.5	
30-Aug-23	80	76	89	84	81	88	0.24	0.15	8.0	0.1	28.2	
31-Aug-23	81	75	92	85	80	91	0.20	0.15	3.2	0.0	18.2	
High			101			100					47.6	
Low		72			80					0.0		
Average	84	75	96	90	85	97			4.0			
				Total for Month			3.29	5.74	Cumulative for Year			
Days over 95 ^u				21			# of Rain Days		10	Rain		32.1
Days of 100 ^u				2			Historic Average		5.33	Avg		39.7
Days below 32 ^u				0			Deviation from Avg		-2.04	Dev		-7.6
Net Gain/loss (Rain - ET)								-2.45	Net		1.1	

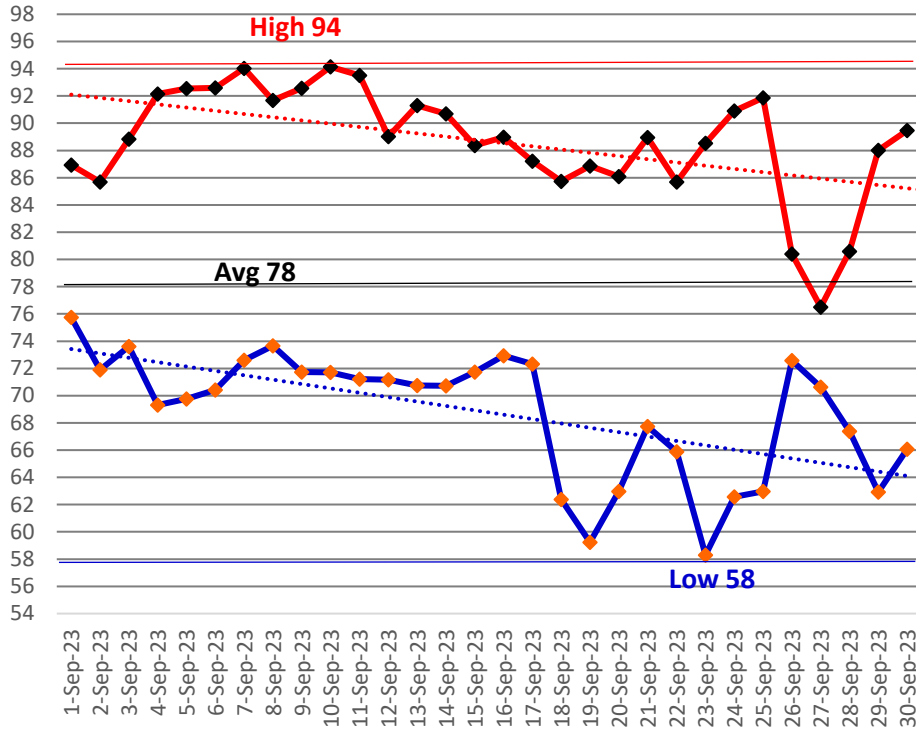


Summer Rain Days - 39 of 92 days

September Daily Weather Data

Date	Temperature						Precipitation		Wind		
	Air Temp 6 ft			Soil Temp 4 inch			Rain	Evapo Trans	Avg Wind	Min Wind	Max Wind
	Avg	Min	Max	Avg	Min	Max	Inches	Inches	mph	mph	mph
1-Sep-23	79	76	87	83	81	86	0.60	0.11	5.8	0.0	26.9
2-Sep-23	77	72	86	81	79	85	0.39	0.09	2.6	0.0	14.6
3-Sep-23	80	74	89	82	78	88	0.00	0.15	3.1	0.0	14.3
4-Sep-23	80	69	92	84	77	92	0.00	0.18	2.5	0.0	10.2
5-Sep-23	81	70	93	85	78	94	0.00	0.18	2.3	0.0	12.0
6-Sep-23	82	70	93	86	80	94	0.00	0.17	2.5	0.0	22.8
7-Sep-23	83	73	94	88	81	95	0.00	0.18	4.9	0.0	17.3
8-Sep-23	82	74	92	88	82	95	0.00	0.17	3.7	0.0	15.6
9-Sep-23	81	72	93	87	82	93	0.00	0.15	3.4	0.0	16.5
10-Sep-23	82	72	94	88	82	96	0.00	0.18	2.6	0.0	12.5
11-Sep-23	82	71	94	89	83	96	0.00	0.16	3.0	0.0	11.5
12-Sep-23	77	71	89	85	80	91	1.92	0.12	2.9	0.0	27.8
13-Sep-23	79	71	91	83	77	92	0.01	0.16	2.5	0.0	19.9
14-Sep-23	79	71	91	83	78	89	0.00	0.14	2.6	0.0	20.1
15-Sep-23	79	72	88	84	79	91	0.00	0.15	3.4	0.0	16.8
16-Sep-23	78	73	89	84	80	91	0.00	0.13	4.7	0.0	20.4
17-Sep-23	79	72	87	83	79	87	0.07	0.12	4.4	0.0	18.2
18-Sep-23	74	62	86	82	75	90	0.00	0.15	3.4	0.0	18.1
19-Sep-23	73	59	87	82	75	92	0.00	0.14	2.2	0.0	12.4
20-Sep-23	74	63	86	81	76	85	0.00	0.11	3.8	0.0	23.2
21-Sep-23	77	68	89	83	76	91	0.00	0.14	3.1	0.0	17.5
22-Sep-23	75	66	86	83	78	88	0.00	0.12	2.9	0.0	18.2
23-Sep-23	73	58	89	82	75	90	0.00	0.14	3.1	0.0	18.4
24-Sep-23	76	63	91	83	76	92	0.00	0.15	2.7	0.0	13.4
25-Sep-23	77	63	92	84	77	93	0.00	0.15	2.5	0.0	14.5
26-Sep-23	74	73	80	81	78	83	0.44	N/A	2.8	0.0	13.9
27-Sep-23	73	71	77	78	77	80	0.00	0.06	2.4	0.0	13.3
28-Sep-23	73	67	81	78	74	82	0.00	0.10	2.7	0.0	15.5
29-Sep-23	74	63	88	78	72	86	0.00	0.13	2.5	0.0	14.6
30-Sep-23	76	66	89	81	74	89	0.00	0.14	2.4	0.0	18.4
High			94			96					27.8
Low		58			72					0.0	
Average	78	69	89	83	78	90			3.1		
				Total for Month			3.43	4.07	Cumulative for Year		
Days over 95 ^u				0	# of Rain Days			6.00	Rain	35.5	
Days of 100 ^u				0	Historic Average			4.38	Avg	44.1	
Days below 32 ^u				0	Deviation from Avg			-0.95	Dev	-8.5	
Days of 90+				13	Net Gain/loss (Rain - ET)			-0.64	Net	1.1	

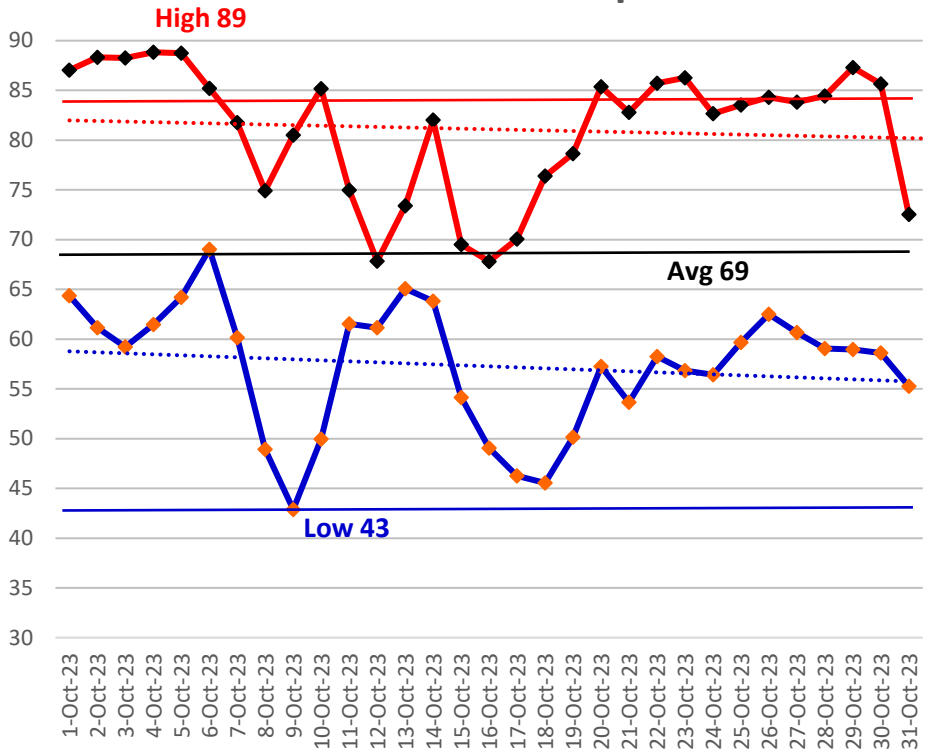
September Marianna FAWN 6' Air Temps



October Daily Weather Data

Date	Temperature						Precipitation		Wind			
	Air Temp 6 ft			Soil Temp 4 inch			Rain	Evapo Trans	Avg Wind	Min Wind	Max Wind	
	Avg	Min	Max	Avg	Min	Max	Inches	Inches	mph	mph	mph	
1-Oct-23	74	64	87	81	75	89	0.00	0.14	2.6	0.0	17.2	
2-Oct-23	74	61	88	81	74	89	0.00	0.13	2.7	0.0	20.4	
3-Oct-23	73	59	88	80	74	88	0.00	0.12	2.2	0.0	15.7	
4-Oct-23	75	61	89	80	74	87	0.00	0.12	3.0	0.0	19.1	
5-Oct-23	76	64	89	82	76	89	0.00	0.13	3.2	0.0	15.9	
6-Oct-23	75	69	85	81	78	86	0.00	0.09	2.5	0.0	8.6	
7-Oct-23	72	60	82	80	76	85	0.00	0.11	7.9	0.8	24.2	
8-Oct-23	61	49	75	76	70	83	0.00	0.10	4.6	0.0	17.6	
9-Oct-23	62	43	81	75	68	84	0.00	0.10	2.9	0.0	14.6	
10-Oct-23	68	50	85	76	69	84	0.00	0.10	2.4	0.0	12.6	
11-Oct-23	68	62	75	75	71	77	0.37	0.06	2.9	0.0	27.5	
12-Oct-23	64	61	68	70	69	72	0.49	0.05	4.1	0.1	19.7	
13-Oct-23	69	65	73	72	70	75	0.00	0.06	3.5	0.1	10.1	
14-Oct-23	72	64	82	73	71	78	0.00	0.10	6.8	0.3	23.8	
15-Oct-23	62	54	70	68	65	72	0.00	0.08	8.1	0.3	23.6	
16-Oct-23	59	49	68	66	62	72	0.00	0.09	7.8	0.3	26.6	
17-Oct-23	59	46	70	68	62	75	0.00	0.08	3.5	0.0	14.5	
18-Oct-23	61	46	76	68	62	77	0.00	0.08	2.2	0.0	11.7	
19-Oct-23	65	50	79	70	64	76	0.00	0.09	2.7	0.0	12.2	
20-Oct-23	71	57	85	71	66	78	0.00	0.11	7.4	0.1	29.9	
21-Oct-23	69	54	83	72	67	79	0.00	0.10	3.6	0.0	16.7	
22-Oct-23	71	58	86	72	68	78	0.00	0.09	3.6	0.0	13.7	
23-Oct-23	69	57	86	73	67	80	0.00	0.10	2.2	0.0	14.8	
24-Oct-23	70	56	83	73	68	79	0.00	0.10	5.1	0.0	23.5	
25-Oct-23	70	60	84	74	69	80	0.00	0.10	5.1	0.0	24.0	
26-Oct-23	72	62	84	75	70	81	0.00	0.10	4.5	0.0	20.3	
27-Oct-23	71	61	84	74	70	79	0.00	0.09	2.2	0.0	15.6	
28-Oct-23	71	59	84	75	70	81	0.00	0.09	3.0	0.0	16.0	
29-Oct-23	71	59	87	76	70	83	0.00	0.10	2.9	0.0	12.7	
30-Oct-23	71	59	86	76	71	82	0.00	0.09	3.6	0.0	14.8	
31-Oct-23	62	55	73	74	70	78	0.00	0.08	9.0	0.8	25.7	
High			89			89					29.9	
Low		43			62					0.0		
Average	69	57	81	74	69	80			4.0			
Days over 95 ^u 0				Total for Month			0.86	2.98	Cumulative for Year			
				# of Rain Days			2.00		Rain	36.4		
				Historic Average			2.78		Avg	46.8		
				Deviation from Avg			-1.92		Dev	-10.4		
				Net Gain/loss (Rain - ET)				-2.12	Net	1.1		
Days below 32 ^u 0												

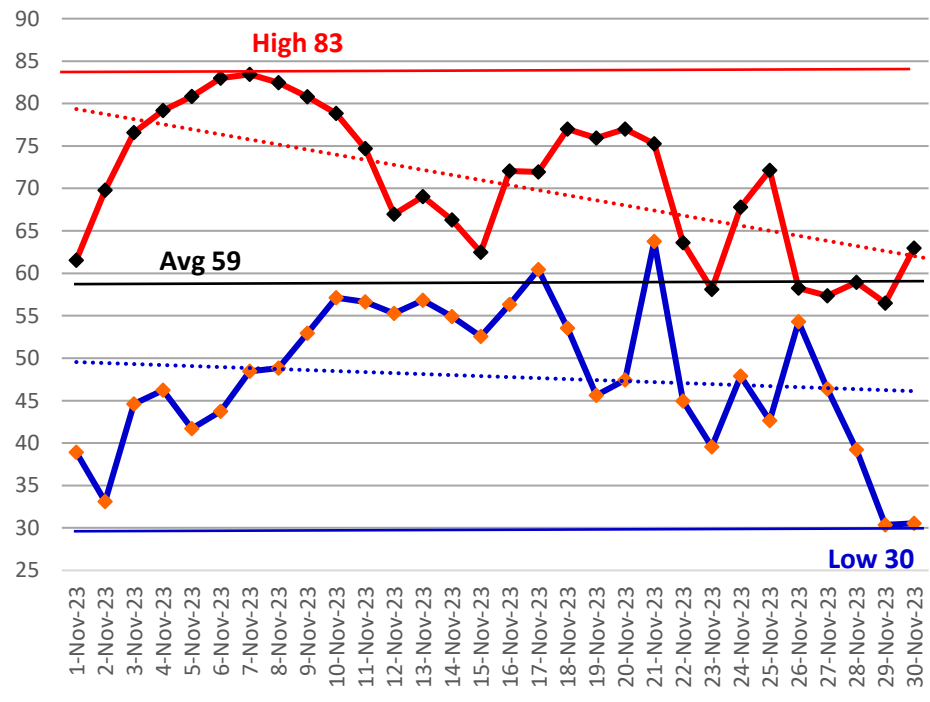
October Marianna FAWN 6' Air Temps



November Daily Weather Data

Date	Temperature						Precipitation		Wind			
	Air Temp 6 ft			Soil Temp 4 inch			Rain	Evapo Trans	Avg Wind	Min Wind	Max Wind	
	Avg	Min	Max	Avg	Min	Max	Inches	Inches	mph	mph	mph	
1-Nov-23	50	39	62	68	64	72	0.00	0.06	9.2	0.1	25.7	
2-Nov-23	51	33	70	65	59	73	0.00	0.06	2.6	0.0	15.3	
3-Nov-23	59	45	77	67	61	74	0.00	0.07	2.7	0.0	15.4	
4-Nov-23	61	46	79	68	63	75	0.00	0.08	3.1	0.0	15.7	
5-Nov-23	61	42	81	68	62	75	0.00	0.07	3.8	0.0	18.5	
6-Nov-23	64	44	83	69	63	76	0.00	0.07	2.1	0.0	10.5	
7-Nov-23	66	48	83	70	64	77	0.00	0.08	2.6	0.0	11.4	
8-Nov-23	65	49	82	71	65	78	0.00	0.08	2.6	0.1	18.7	
9-Nov-23	66	53	81	71	67	77	0.00	0.07	2.3	0.0	12.4	
10-Nov-23	69	57	79	72	68	76	0.00	0.07	3.1	0.0	16.8	
11-Nov-23	66	57	75	72	69	75	0.01	0.06	3.7	0.0	16.9	
12-Nov-23	59	55	67	69	67	72	0.00	0.06	4.5	0.0	15.1	
13-Nov-23	61	57	69	69	67	72	0.00	0.06	4.0	0.0	18.9	
14-Nov-23	58	55	66	66	64	68	0.08	0.05	2.9	0.0	14.9	
15-Nov-23	58	53	62	63	62	65	1.24	0.05	3.2	0.0	17.1	
16-Nov-23	63	56	72	65	62	69	0.05	0.06	3.1	0.0	18.8	
17-Nov-23	64	60	72	66	65	69	0.00	0.05	4.1	0.0	13.1	
18-Nov-23	65	54	77	66	63	71	0.00	0.07	5.4	0.1	18.4	
19-Nov-23	60	46	76	64	59	70	0.00	0.06	2.7	0.0	13.9	
20-Nov-23	63	47	77	64	59	70	0.00	0.07	5.4	0.0	17.9	
21-Nov-23	70	64	75	67	64	70	0.62	0.05	8.8	0.4	23.1	
22-Nov-23	57	45	64	64	58	68	0.00	0.05	8.2	0.3	25.1	
23-Nov-23	50	40	58	58	54	63	0.00	0.05	2.7	0.0	9.8	
24-Nov-23	57	48	68	61	58	67	0.02	0.05	3.1	0.0	13.7	
25-Nov-23	56	43	72	60	55	67	0.00	0.05	1.9	0.0	11.9	
26-Nov-23	57	54	58	60	59	61	0.88	0.04	3.6	0.0	17.7	
27-Nov-23	52	46	57	58	54	61	0.00	0.05	6.6	0.7	19.5	
28-Nov-23	48	39	59	54	50	59	0.00	0.04	6.0	0.0	19.5	
29-Nov-23	43	30	57	51	46	58	0.04	0.04	2.9	0.0	14.5	
30-Nov-23	47	31	63	51	45	58	0.00	0.05	2.6	0.0	14.6	
High			83			78					25.7	
Low		30			45					0.0		
Average	59	48	71	65	61	69			4.0			
Days over 95 ^o				0			Total for Month	2.94	1.77	Cumulative for Year		
Days below 32 ^o				2			# of Rain Days	8.00		Rain	39.3	
							Historic Average	3.31		Avg	50.1	
							Deviation from Avg	-0.37		Dev	-10.8	
							Net Gain/loss (Rain - ET)		1.17	Net	1.1	

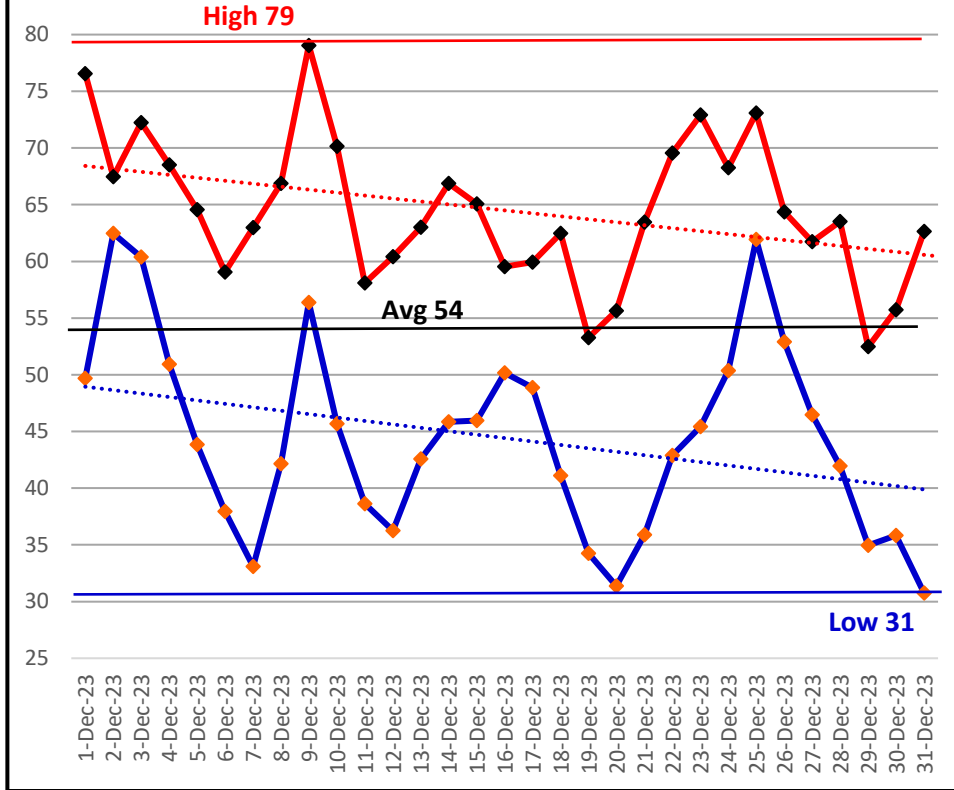
November Marianna FAWN 6' Air Temps



December Daily Weather Data

Date	Temperature						Precipitation		Wind					
	Air Temp 6 ft			Soil Temp 4 inch			Rain	Evapo Trans	Avg Wind	Min Wind	Max Wind			
	Avg	Min	Max	Avg	Min	Max	Inches	Inches	mph	mph	mph			
1-Dec-23	66	50	77	59	53	63	0.02	0.07	6.6	0.0	22.6			
2-Dec-23	65	62	67	63	61	64	4.63	0.04	6.9	0.1	24.8			
3-Dec-23	67	60	72	65	63	68	0.29	0.05	5.0	0.1	17.7			
4-Dec-23	60	51	69	62	57	65	0.00	0.05	4.0	0.1	16.2			
5-Dec-23	53	44	65	57	53	62	0.00	0.05	5.0	0.1	16.4			
6-Dec-23	49	38	59	54	50	59	0.00	0.04	6.2	0.1	22.5			
7-Dec-23	47	33	63	53	46	60	0.00	0.04	1.6	0.0	8.5			
8-Dec-23	56	42	67	55	50	59	0.00	0.05	3.9	0.0	12.9			
9-Dec-23	68	56	79	62	56	69	0.16	0.06	6.2	0.1	21.9			
10-Dec-23	61	46	70	63	55	66	0.85	0.06	7.8	0.1	43.3			
11-Dec-23	46	39	58	53	48	59	0.00	0.04	6.0	0.0	18.5			
12-Dec-23	47	36	60	52	46	59	0.00	0.04	2.3	0.0	12.4			
13-Dec-23	51	43	63	52	48	58	0.00	0.04	2.8	0.0	14.6			
14-Dec-23	54	46	67	53	48	59	0.00	0.04	2.9	0.0	17.6			
15-Dec-23	55	46	65	55	50	61	0.00	0.04	2.4	0.0	13.9			
16-Dec-23	55	50	60	54	52	57	0.35	0.04	3.4	0.0	16.6			
17-Dec-23	58	49	60	57	54	59	0.38	0.05	9.2	0.1	26.7			
18-Dec-23	50	41	62	53	48	58	0.00	0.04	8.4	1.1	22.1			
19-Dec-23	43	34	53	49	44	55	0.00	0.03	5.2	0.1	20.5			
20-Dec-23	43	31	56	48	42	54	0.00	0.04	1.9	0.0	15.3			
21-Dec-23	49	36	63	50	44	58	0.00	0.04	2.0	0.0	13.0			
22-Dec-23	53	43	70	54	48	62	0.00	0.04	1.8	0.0	11.7			
23-Dec-23	58	45	73	56	50	64	0.00	0.05	3.0	0.0	17.8			
24-Dec-23	60	50	68	57	53	61	0.21	0.05	5.8	0.0	21.5			
25-Dec-23	66	62	73	62	59	65	0.20	0.05	10.3	1.2	33.0			
26-Dec-23	59	53	64	61	58	63	0.01	0.05	5.7	0.0	14.1			
27-Dec-23	54	46	62	57	54	62	0.00	0.04	3.9	0.1	12.6			
28-Dec-23	53	42	64	56	51	63	0.00	0.04	5.4	0.0	22.4			
29-Dec-23	43	35	52	50	46	56	0.00	0.03	7.4	0.2	24.4			
30-Dec-23	44	36	56	50	44	57	0.00	0.04	4.8	0.0	17.9			
31-Dec-23	47	31	63	50	44	58	0.00	0.04	3.0	0.0	13.9			
High			79			69					43.3			
Low		31			42					0.0				
Average	54	44	64	56	51	61			4.9					
Days over 95 ^u 0				Total for Month			7.10	1.38	Cumulative for Year					
				# of Rain Days			10.00				Rain	46.4		
				Historic Average			4.42				Avg	54.6		
				Deviation from Avg			2.68				Dev	-8.1		
				Net Gain/loss (Rain - ET)			5.72				Net	1.1		
Days below 32 ^o 2														
Total days in year				6			28							

December Marianna FAWN 6' Air Temps





YEAR	JAN	FEB	MAR	APR	MAY	JUNE	JULY	AUG	SEP	OCT	NOV	DEC	TOTAL
1952	1.14	8.88	4.48	2.11	5.13	1.12	5.95	8.81	3.09	0.65	3.26	3.42	48.04
1953	4.84	7.26	3.03	8.43	2.43	3.97	6.84	1.63	6.33	0.65	4.09	15.31	64.81
1954	1.33	3.49	2.62	2.58	1.96	3.46	3.28	2.84	1.72	1.30	2.66	1.44	28.68
1955	3.66	1.83	0.84	5.80	3.03	1.62	6.75	3.75	2.44	2.10	0.72	0.77	33.31
1956	3.59	5.18	3.77	2.04	4.03	5.45	8.52	4.09	6.44	5.08	0.28	3.34	51.81
1957	0.75	2.65	5.17	5.74	4.60	5.75	9.83	5.91	16.84	1.31	6.24	2.22	67.01
1958	4.48	3.61	4.73	7.22	5.57	6.00	8.39	3.45	3.68	1.88	1.75	2.32	53.08
1959	3.67	7.06	8.50	5.73	6.95	3.77	4.83	3.67	3.07	7.93	0.21	1.53	56.92
1960	3.36	7.08	3.41	6.80	3.20	4.75	4.97	4.80	6.22	2.00	0.47	2.35	49.41
1961	4.23	4.15	3.64	5.57	3.97	4.41	3.99	11.09	2.60	0.00	2.84	6.23	52.72
1962	1.72	2.80	8.13	3.28	2.86	3.67	7.97	6.07	3.07	2.82	5.16	1.67	49.22
1963	7.31	3.02	3.18	1.36	3.50	7.99	5.16	1.50	5.25	0.01	4.22	6.05	48.55
1964	10.80	6.81	6.41	9.47	2.23	5.68	9.22	3.07	7.47	9.61	3.35	6.44	80.56
1965	2.63	6.09	5.51	3.96	0.18	9.60	3.26	4.18	4.48	3.41	1.81	3.60	48.71
1966	5.56	9.84	2.57	0.77	5.80	3.13	3.25	9.82	5.09	1.41	2.03	4.62	53.89
1967	8.27	3.32	2.19	0.13	2.61	7.02	6.49	3.58	1.40	1.86	2.40	7.98	47.25
1968	1.28	2.30	3.40	2.50	3.39	1.18	5.45	4.61	2.99	1.41	5.11	5.34	38.96
1969	1.68	3.49	7.08	4.54	3.01	1.71	13.18	3.05	5.64	1.50	1.22	3.80	49.90
1970	4.16	9.20	8.86	1.83	1.81	3.69	5.04	8.01	0.49	4.40	2.21	3.13	52.83
1971	1.97	6.11	7.15	3.17	3.03	3.85	5.20	6.76	2.47	1.84	1.94	3.70	47.19
1972	3.62	6.03	6.41	0.38	2.87	8.89	3.78	5.39	2.14	2.44	3.29	3.77	49.01
1973	8.14	7.71	8.38	7.60	6.87	3.63	11.12	4.51	5.40	0.27	3.64	5.33	72.60
1974	5.24	5.80	2.66	3.40	3.78	1.56	3.29	8.01	4.68	0.84	2.14	2.89	44.29
1975	10.21	6.36	4.91	10.35	3.97	4.10	13.71	5.40	3.81	4.35	2.89	3.28	73.34
1976	6.99	1.50	4.89	1.87	8.89	3.08	3.03	3.47	5.47	6.18	5.72	3.97	55.06
1977	3.47	1.81	6.52	0.88	0.60	6.36	3.55	5.22	9.83	2.59	8.14	4.19	53.16
1978	7.28	3.28	7.25	4.65	6.73	3.79	7.25	4.90	0.98	0.20	6.01	3.65	55.97
1979	7.30	7.78	3.26	7.75	6.22	1.31	7.49	6.30	11.51	0.53	4.47	2.84	66.76
1980	6.58	2.96	11.54	9.29	4.50	3.50	5.87	2.53	4.56	4.71	1.52	0.25	57.81
1981	1.70	5.32	5.94	3.03	2.73	4.74	4.02	2.53	2.44	1.75	0.85	4.94	39.99
1982	4.17	5.61	2.91	5.93	5.39	3.00	7.51	4.42	6.00	2.65	2.34	9.14	59.07
1983	4.92	6.84	8.53	7.88	2.27	5.66	1.19	2.53	8.97	3.52	5.90	7.65	65.86
1984	5.49	5.01	8.62	6.29	2.50	5.31	12.01	5.76	0.32	1.60	1.63	0.80	55.34
1985	4.60	4.46	2.60	1.18	4.44	5.68	3.68	5.58	1.42	7.42	7.91	5.34	54.31
1986	5.68	10.27	3.21	0.83	2.26	1.85	2.75	4.12	2.35	2.22	4.40	5.68	45.62
1987	8.62	5.52	7.23	0.40	4.46	5.43	5.51	4.18	2.27	0.06	4.02	0.81	48.51
1988	5.57	6.40	8.41	2.69	0.28	1.07	5.43	3.98	5.53	1.98	3.28	1.23	45.85
1989	1.59	2.74	4.96	3.63	7.01	12.90	11.19	3.06	3.36	7.20	4.71	5.45	67.80
1990	5.26	4.57	4.55	3.00	3.22	4.02	3.65	2.91	0.85	1.34	0.93	3.42	37.72
1991	13.62	3.44	9.00	5.32	10.03	5.30	10.67	3.89	1.53	1.17	1.60	3.00	68.57
1992	8.37	6.29	7.92	2.50	1.41	11.16	8.69	6.72	3.19	2.08	7.40	2.93	68.66
1993	12.00	3.38	7.41	1.50	1.60	4.18	6.68	3.89	3.44	2.90	2.27	3.63	52.88
1994	8.64	2.53	6.25	4.34	1.82	11.41	10.95	9.08	6.44	7.62	2.53	3.79	75.40
1995	5.23	3.13	4.29	4.35	3.90	5.56	3.02	6.16	0.86	7.51	4.12	1.78	49.91
1996	3.64	5.99	8.47	5.76	1.50	5.43	2.83	14.28	5.32	3.81	2.01	3.65	62.69
1997	6.68	5.29	2.63	10.08	5.91	6.41	5.73	4.65	3.78	2.10	6.85	8.44	68.55
1998	6.28	8.30	6.11	2.24	1.45	2.35	4.37	2.20	16.31	0.30	2.05	1.98	53.94
1999	6.95	2.90	3.61	1.50	6.71	8.99	8.64	4.02	4.33	3.13	3.56	2.50	56.84

YEAR	JAN	FEB	MAR	APR	MAY	JUNE	JULY	AUG	SEP	OCT	NOV	DEC	TOTAL
2000	3.78	4.96	4.48	4.05	0.09	4.00	3.40	7.15	7.20	0.71	4.43	3.21	47.46
2001	2.16	0.82	10.00	1.99	2.52	8.24	4.66	8.21	1.90	1.51	1.70	0.78	44.49
2002	3.82	2.44	5.51	5.78	2.19	3.45	10.34	3.30	11.83	7.36	7.76	5.99	69.77
2003	2.30	7.03	8.18	4.89	3.11	6.11	7.84	5.99	2.39	3.58	3.04	3.12	57.58
2004	3.19	7.66	0.90	4.37	1.19	6.66	4.92	1.67	10.01	3.89	4.97	3.25	52.68
2005	3.33	2.31	9.05	7.04	1.67	7.47	9.44	11.71	1.62	0.03	3.15	4.81	61.63
2006	4.82	3.90	0.91	1.61	4.97	1.99	2.22	5.18	0.91	3.09	3.41	5.43	38.44
2007	5.99	2.45	1.10	0.99	1.57	3.97	3.94	4.18	1.27	4.79	1.89	4.03	36.17
2008	4.26	9.00	9.11	4.28	1.46	8.64	4.02	9.29	0.74	5.11	3.18	8.23	67.32
2009	2.33	3.26	7.11	7.73	9.17	2.78	3.88	3.19	5.22	3.39	2.35	9.57	59.98
2010	7.53	3.99	3.41	4.01	5.09	2.92	2.31	0.84	1.33	0.22	5.82	0.63	38.10
2011	4.33	4.04	5.00	0.92	0.78	1.66	5.11	1.87	2.26	1.84	1.94	3.75	33.50
2012	3.79	7.49	5.94	3.17	1.42	7.35	5.05	14.35	5.17	1.75	1.30	4.10	60.88
2013	1.05	12.86	2.99	3.54	0.64	3.72	13.39	13.17	2.14	1.96	3.91	4.44	63.81
2014	2.15	4.99	7.70	13.18	4.03	2.32	5.69	2.55	6.03	2.03	5.93	5.32	61.92
2015	3.4	3.8	2.17	9.52	3.55	4.04	4.85	2.75	4.15	1.00	7.33	8.67	55.23
2016	4.8	3.51	8.15	4.94	1.74	3.49	2.79	7.28	4.19	0.22	0.8	12.33	54.24
2017	7.28	3.78	2.11	2.12	4.28	11.53	6.82	4.47	3.75	0.97	0.2	2.76	50.07
2018	4.26	10.50	5.38	3.72	5.06	7.97	5.99	5.67	2.67	5.66	6.94	11.86	75.68
2019	6.53	2.76	3.43	3.94	1.78	3.62	6.36	4.15	0.31	6.43	1.74	6.95	48.00
2020	4.06	6.42	2.02	4.42	2.16	5.31	4.00	8.81	13.44	3.19	1.95	4.53	60.31
2021	5.45	6.43	3.48	8.57	2.56	8.18	7.74	9.37	5.08	4.62	0.30	4.10	65.88
2022	5.24	1.14	11.24	5.77	7.84	1.62	5.80	4.78	0.50	2.13	2.83	1.90	50.79
2023	3.29	1.89	5.03	5.69	1.68	4.65	6.58	3.29	3.43	0.86	2.94	7.10	46.43

Deviation from the Average Monthly Rainfall

Inches	-1.62	-3.15	-0.35	1.27	-1.84	-0.30	0.44	-2.04	-0.95	-1.92	-0.37	2.68	-8.14
--------	-------	-------	-------	------	-------	-------	------	-------	-------	-------	-------	------	-------

Monthly Average Rainfall, 1952-2023

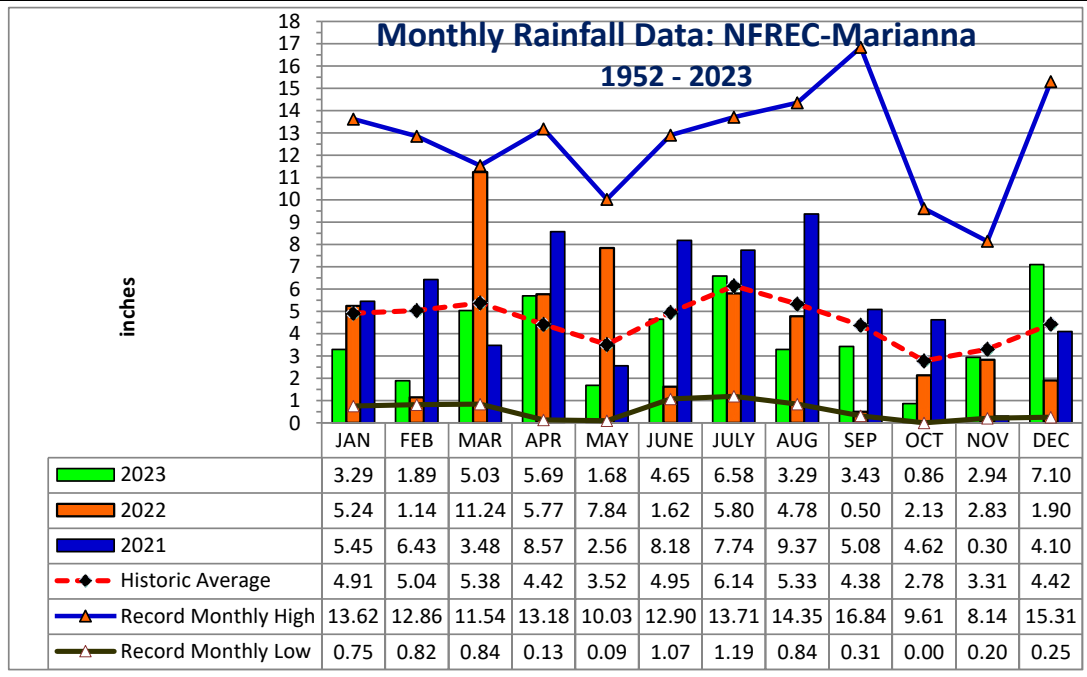
AVG.	4.91	5.04	5.38	4.42	3.52	4.95	6.14	5.33	4.38	2.78	3.31	4.42	54.57
------	------	------	------	------	------	------	------	------	------	------	------	------	-------

% of Annual Rainfall Occuring each Month

	9.0%	9.2%	9.8%	8.1%	6.4%	9.0%	11.2%	9.7%	8.0%	5.1%	6.0%	8.1%	
--	------	------	------	------	------	------	-------	------	------	------	------	------	--

Record High/Low for the Month

LOW	0.75	0.82	0.84	0.13	0.09	1.07	1.19	0.84	0.31	0.00	0.20	0.25	28.68
HIGH	13.62	12.86	11.54	13.18	10.03	12.90	13.71	14.35	16.84	9.61	8.14	15.31	80.56



Jackson County
Monthly Cumulative Rainfall, 1952 - 2023
North Florida Research & Education Center Marianna, FL



Wet **Dry**
Ranking **Ranking**

YEAR	JAN	FEB	MAR	APR	MAY	JUNE	JULY	AUG	SEP	OCT	NOV	DEC	Wet Ranking	Dry Ranking
1952	1.14	10.02	14.50	16.61	21.74	22.86	28.81	37.62	40.71	41.36	44.62	48.04	54	18
1953	4.84	12.10	15.13	23.56	25.99	29.96	36.80	38.43	44.76	45.41	49.50	64.81	16	56
1954	1.33	4.82	7.44	10.02	11.98	15.44	18.72	21.56	23.28	24.58	27.24	28.68	71	1
1955	3.66	5.49	6.33	12.13	15.16	16.78	23.53	27.28	29.72	31.82	32.54	33.31	70	2
1956	3.59	8.77	12.54	14.58	18.61	24.06	32.58	36.67	43.11	48.19	48.47	51.81	43	29
1957	0.75	3.40	8.57	14.31	18.91	24.66	34.49	40.40	57.24	58.55	64.79	67.01	12	60
1958	4.48	8.09	12.82	20.04	25.61	31.61	40.00	43.45	47.13	49.01	50.76	53.08	38	34
1959	3.67	10.73	19.23	24.96	31.91	35.68	40.51	44.18	47.25	55.18	55.39	56.92	27	45
1960	3.36	10.44	13.85	20.65	23.85	28.60	33.57	38.37	44.59	46.59	47.06	49.41	48	24
1961	4.23	8.38	12.02	17.59	21.56	25.97	29.96	41.05	43.65	43.65	46.49	52.72	41	31
1962	1.72	4.52	12.65	15.93	18.79	22.46	30.43	36.50	39.57	42.39	47.55	49.22	49	23
1963	7.31	10.33	13.51	14.87	18.37	26.36	31.52	33.02	38.27	38.28	42.50	48.55	52	20
1964	10.80	17.61	24.02	33.49	35.72	41.40	50.62	53.69	61.16	70.77	74.12	80.56	1	71
1965	2.63	8.72	14.23	18.19	18.37	27.97	31.23	35.41	39.89	43.30	45.11	48.71	51	21
1966	5.56	15.40	17.97	18.74	24.54	27.67	30.92	40.74	45.83	47.24	49.27	53.89	36	36
1967	8.27	11.59	13.78	13.91	16.52	23.54	30.03	33.61	35.01	36.87	39.27	47.25	57	15
1968	1.28	3.58	6.98	9.48	12.87	14.05	19.50	24.11	27.10	28.51	33.62	38.96	64	8
1969	1.68	5.17	12.25	16.79	19.80	21.51	34.69	37.74	43.38	44.88	46.10	49.90	47	25
1970	4.16	13.36	22.22	24.05	25.86	29.55	34.59	42.60	43.09	47.49	49.70	52.83	40	32
1971	1.97	8.08	15.23	18.40	21.43	25.28	30.48	37.24	39.71	41.55	43.49	47.19	58	14
1972	3.62	9.65	16.06	16.44	19.31	28.20	31.98	37.37	39.51	41.95	45.24	49.01	50	22
1973	8.14	15.85	24.23	31.83	38.70	42.33	53.45	57.96	63.36	63.63	67.27	72.60	5	67
1974	5.24	11.04	13.70	17.10	20.88	22.44	25.73	33.74	38.42	39.26	41.40	44.29	62	10
1975	10.21	16.57	21.48	31.83	35.80	39.90	53.61	59.01	62.82	67.17	70.06	73.34	4	68
1976	6.99	8.49	13.38	15.25	24.14	27.22	30.25	33.72	39.19	45.37	51.09	55.06	32	40
1977	3.47	5.28	11.80	12.68	13.28	19.64	23.19	28.41	38.24	40.83	48.97	53.16	37	35
1978	7.28	10.56	17.81	22.46	29.19	32.98	40.23	45.13	46.11	46.31	52.32	55.97	29	43
1979	7.30	15.08	18.34	26.09	32.31	33.62	41.11	47.41	58.92	59.45	63.92	66.76	13	59
1980	6.58	9.54	21.08	30.37	34.87	38.37	44.24	46.77	51.33	56.04	57.56	57.81	25	47
1981	1.70	7.02	12.96	15.99	18.72	23.46	27.48	30.01	32.45	34.20	35.05	39.99	63	9
1982	4.17	9.78	12.69	18.62	24.01	27.01	34.52	38.94	44.94	47.59	49.93	59.07	24	48
1983	4.92	11.76	20.29	28.17	30.44	36.10	37.29	39.82	48.79	52.31	58.21	65.86	15	57
1984	5.49	10.50	19.12	25.41	27.91	33.22	45.23	50.99	51.31	52.91	54.54	55.34	30	42
1985	4.60	9.06	11.66	12.84	17.28	22.96	26.64	32.22	33.64	41.06	48.97	54.31	33	39
1986	5.68	15.95	19.16	19.99	22.25	24.10	26.85	30.97	33.32	35.54	39.94	45.62	60	12
1987	8.62	14.14	21.37	21.77	26.23	31.66	37.17	41.35	43.62	43.68	47.70	48.51	53	19
1988	5.57	11.97	20.38	23.07	23.35	24.42	29.85	33.83	39.36	41.34	44.62	45.85	59	13
1989	1.59	4.33	9.29	12.92	19.93	32.83	44.02	47.08	50.44	57.64	62.35	67.80	10	62
1990	5.26	9.83	14.38	17.38	20.60	24.62	28.27	31.18	32.03	33.37	34.30	37.72	67	5
1991	13.62	17.06	26.06	31.38	41.41	46.71	57.38	61.27	62.80	63.97	65.57	68.57	8	64
1992	8.37	14.66	22.58	25.08	26.49	37.65	46.34	53.06	56.25	58.33	65.73	68.66	7	65
1993	12.00	15.38	22.79	24.29	25.89	30.07	36.75	40.64	44.08	46.98	49.25	52.88	39	33
1994	8.64	11.17	17.42	21.76	23.58	34.99	45.94	55.02	61.46	69.08	71.61	75.40	3	69
1995	5.23	8.36	12.65	17.00	20.90	26.46	29.48	35.64	36.50	44.01	48.13	49.91	46	26
1996	3.64	9.63	18.10	23.86	25.36	30.79	33.62	47.90	53.22	57.03	59.04	62.69	18	54
1997	6.68	11.97	14.60	24.68	30.59	37.00	42.73	47.38	51.16	53.26	60.11	68.55	9	63
1998	6.28	14.58	20.69	22.93	24.38	26.73	31.10	33.30	49.61	49.91	51.96	53.94	35	37
1999	6.95	9.85	13.46	14.96	21.67	30.66	39.30	43.32	47.65	50.78	54.34	56.84	28	44

YEAR	JAN	FEB	MAR	APR	MAY	JUNE	JULY	AUG	SEP	OCT	NOV	DEC	Ranking	Ranking
2000	3.78	8.74	13.22	17.27	17.36	21.36	24.76	31.91	39.11	39.82	44.25	47.46	56	16
2001	2.16	2.98	12.98	14.97	17.49	25.73	30.39	38.60	40.50	42.01	43.71	44.49	61	11
2002	3.82	6.26	11.77	17.55	19.74	23.19	33.53	36.83	48.66	56.02	63.78	69.77	6	66
2003	2.30	9.33	17.51	22.40	25.51	31.62	39.46	45.45	47.84	51.42	54.46	57.58	26	46
2004	3.19	10.85	11.75	16.12	17.31	23.97	28.89	30.56	40.57	44.46	49.43	52.68	42	30
2005	3.33	5.64	14.69	21.73	23.40	30.87	40.31	52.02	53.64	53.67	56.82	61.63	20	52
2006	4.82	8.72	9.63	11.24	16.21	18.20	20.42	25.60	26.51	29.60	33.01	38.44	65	7
2007	5.99	8.44	9.54	10.53	12.10	16.07	20.01	24.19	25.46	30.25	32.14	36.17	68	4
2008	4.26	13.26	22.37	26.65	28.11	36.75	40.77	50.06	50.80	55.91	59.09	67.32	11	61
2009	2.33	5.59	12.70	20.43	29.60	32.38	36.26	39.45	44.67	48.06	50.41	59.98	23	49
2010	7.53	11.52	14.93	18.94	24.03	26.95	29.26	30.10	31.43	31.65	37.47	38.10	66	6
2011	4.33	8.37	13.37	14.29	15.07	16.73	21.84	23.71	25.97	27.81	29.75	33.50	69	3
2012	3.79	11.28	17.22	20.39	21.81	29.16	34.21	48.56	53.73	55.48	56.78	60.88	21	51
2013	1.05	13.91	16.90	20.44	21.08	24.80	38.19	51.36	53.50	55.46	59.37	63.81	17	55
2014	2.15	7.14	14.84	28.02	32.05	34.37	40.06	42.61	48.64	50.67	56.60	61.92	19	53
2015	3.40	7.20	9.37	18.89	22.44	26.48	31.33	34.08	38.23	39.23	46.56	55.23	31	41
2016	4.80	8.31	16.46	21.40	23.14	26.63	29.42	36.70	40.89	41.11	41.91	54.24	34	38
2017	7.28	11.06	13.17	15.29	19.57	31.10	37.92	42.39	46.14	47.11	47.31	50.07	45	27
2018	4.26	14.76	20.14	23.86	28.92	36.89	42.88	48.55	51.22	56.88	63.82	75.68	2	70
2019	6.53	9.29	12.72	16.66	18.44	22.06	28.42	32.57	32.88	39.31	41.05	48.00	55	17
2020	4.06	10.48	12.50	16.92	19.08	24.39	28.39	37.20	50.64	53.83	55.78	60.31	22	50
2021	5.45	11.88	15.36	23.93	26.49	34.67	42.41	51.78	56.86	61.48	61.78	65.88	14	58
2022	5.24	6.38	17.62	23.39	31.23	32.85	38.65	43.43	43.93	46.06	48.89	50.79	44	28
2023	3.29	5.18	10.21	15.90	17.58	22.23	28.81	32.10	35.53	36.39	39.33	46.43	59	14

Deviation from the Average Accumulation

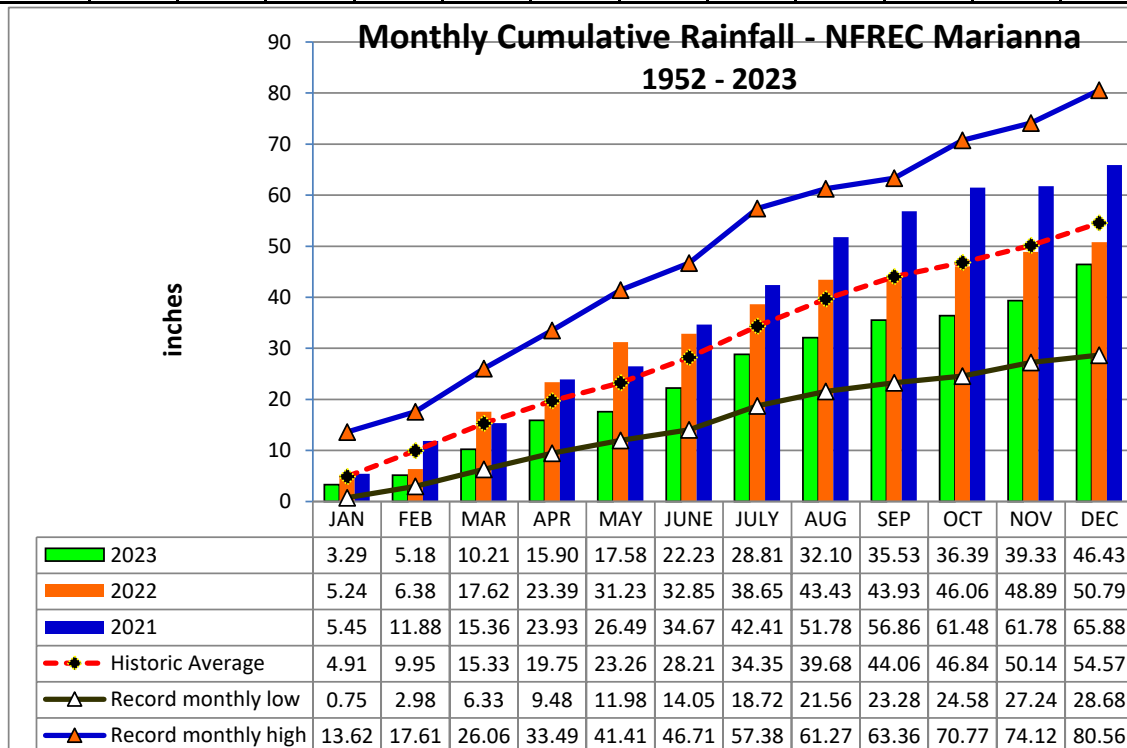
Inches	-1.62	-4.77	-5.12	-3.85	-5.68	-5.98	-5.54	-7.58	-8.53	-10.45	-10.81	-8.14
--------	-------	-------	-------	-------	-------	-------	-------	-------	-------	--------	--------	-------

Average Accumulation, 1952-2023

Inches	4.91	9.95	15.33	19.75	23.26	28.21	34.35	39.68	44.06	46.84	50.14	54.57
--------	------	------	-------	-------	-------	-------	-------	-------	-------	-------	-------	-------

Record High/Low Accumulation

LOW	0.75	2.98	6.33	9.48	11.98	14.05	18.72	21.56	23.28	24.58	27.24	28.68
HIGH	13.62	17.61	26.06	33.49	41.41	46.71	57.38	61.27	63.36	70.77	74.12	80.56



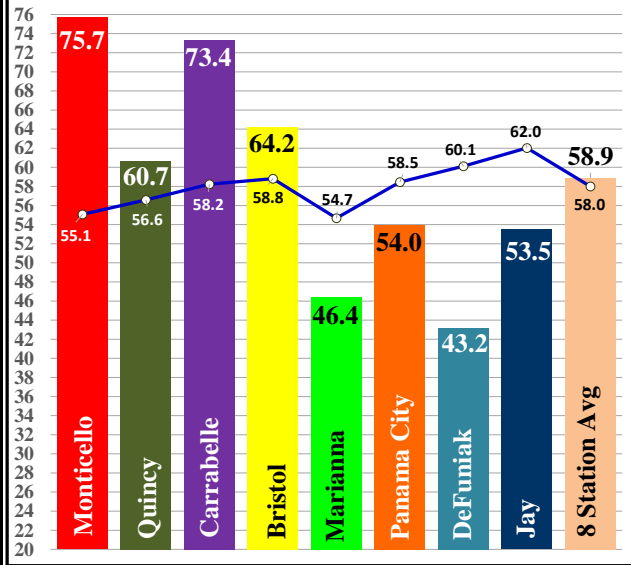
2023 Panhandle UF/IFAS FAWN Weather Station Summary

FAWN Station	Data	Jan	Feb	Mar	Apr	May	June	July	Aug	Sept	Oct	Nov	Dec	Total
Monticello	Rain	6.1	4.0	8.1	5.8	6.8	11.1	5.1	8.6	2.8	3.0	3.4	10.8	75.7
	Hist Avg	4.2	4.2	4.9	3.7	3.8	5.8	7.3	6.7	5.2	2.7	2.7	3.9	55.1
	Deviation	1.9	-0.2	3.2	2.1	3.0	5.3	-2.2	1.9	-2.4	0.3	0.8	6.9	20.6
Quincy	Rain	6.2	4.1	4.3	6.7	2.0	5.5	7.7	4.6	2.7	2.4	3.2	11.2	60.7
	Hist Avg	4.5	4.5	5.3	4.1	4.1	5.6	7.3	6.4	5.2	2.7	2.9	4.1	56.6
	Deviation	1.7	-0.4	-1.0	2.6	-2.1	-0.1	0.5	-1.8	-2.4	-0.3	0.4	7.1	4.1
Carrabelle	Rain	5.0	3.8	2.0	4.2	5.7	10.9	9.4	8.5	6.6	2.7	3.9	10.9	73.4
	Hist Avg	3.9	4.0	4.7	3.7	3.6	5.6	8.6	7.6	6.9	3.0	3.0	3.8	58.2
	Deviation	1.1	-0.2	-2.7	0.5	2.1	5.3	0.8	0.8	-0.3	-0.3	0.9	7.1	15.1
Bristol	Rain	4.9	3.0	5.5	6.0	8.3	3.1	14.2	3.3	1.3	2.2	3.5	8.9	64.2
	Hist Avg	4.2	4.3	5.0	4.0	3.9	5.9	8.2	7.3	6.0	2.9	3.1	4.0	58.8
	Deviation	0.6	-1.3	0.5	2.0	4.4	-2.8	6.0	-4.1	-4.7	-0.8	0.5	5.0	5.4
Marianna	Rain	3.3	1.9	5.0	5.7	1.7	4.7	6.6	3.3	3.4	0.9	2.9	7.1	46.4
	Hist Avg	4.6	4.7	5.5	4.1	3.8	5.0	6.5	5.9	4.8	2.6	3.2	4.2	54.7
	Deviation	-1.3	-2.8	-0.5	1.6	-2.1	-0.3	0.1	-2.6	-1.3	-1.8	-0.3	3.0	-8.3
Panama City	Rain	3.6	3.2	3.8	7.0	1.6	4.4	8.0	1.7	3.9	3.0	3.9	9.8	54.0
	Hist Avg	4.4	4.5	5.3	4.0	3.4	5.3	7.5	7.4	5.7	3.1	3.5	4.3	58.5
	Deviation	-0.7	-1.3	-1.5	3.0	-1.9	-0.8	0.5	-5.7	-1.8	-0.1	0.4	5.5	-4.5
DeFuniak	Rain	5.1	1.4	5.3	5.0	3.0	6.0	3.4	3.5	0.7	1.0	2.3	6.5	43.2
	Hist Avg	4.8	5.0	5.7	4.4	3.8	5.2	7.4	6.6	5.6	3.2	3.6	4.8	60.1
	Deviation	0.3	-3.6	-0.5	0.5	-0.8	0.8	-3.9	-3.1	-4.9	-2.2	-1.4	1.7	-16.9
Jay	Rain	7.3	2.9	5.3	5.0	4.2	9.3	3.3	1.6	4.2	1.2	4.1	5.1	53.5
	Hist Avg	4.8	5.1	5.9	4.6	4.1	5.7	7.5	6.5	5.9	3.5	3.7	4.8	62.0
	Deviation	2.5	-2.2	-0.7	0.4	0.1	3.6	-4.2	-4.8	-1.6	-2.3	0.4	0.3	-8.5
8 Station Average		5.2	3.0	4.9	5.7	4.2	6.9	7.2	4.4	3.2	2.0	3.4	8.8	58.9
8 Station Historic Average*		4.4	4.5	5.3	4.1	3.8	5.5	7.5	6.8	5.7	3.0	3.2	4.2	58.0
Deviation from Avg		0.8	-1.5	-0.4	1.6	0.3	1.4	-0.3	-2.4	-2.4	-0.9	0.2	4.6	0.9

*NOAA County Historic Averages from 1901-2000

<https://www.ncei.noaa.gov/access/monitoring/climate-at-a-glance/county/rankings>

Panhandle FAWN Station 2023 Rainfall vs Historic Average



FAWN Station	Monticello	Quincy	Carrabelle	Bristol	Marianna	Panama City	DeFuniak	Jay	Average
Rainfall	75.7	60.7	73.4	64.2	46.4	54.0	43.2	53.5	58.9
Historic Average	55.1	56.6	58.2	58.8	54.7	58.5	60.1	62.0	58.0