



Jackson County 2014 Weather Data

62 Years of Weather Data Recorded at the UF/IFAS Marianna North Florida Research and Education Center



Doug Mayo
Jackson County Extension Director

1952-2008 Rainfall Data compiled by
Ed Jowers, Emeritus County Extension Director

Data provided by Florida Automated Weather Station (FAWN)
UF/IFAS North Florida Research and Education Center
Greenwood, Florida



<http://fawn.ifas.ufl.edu/station.php?id=130>

| Tower Name | Tower Number | Latitude Degree, Minutes | Latitude Degrees Minutes, Seconds | Latitude Degrees Decimal | Longitude Degree, Minutes | Longitude Degrees Minutes, Seconds | Longitude Degrees Decimal | Elevation Feet |
|------------|--------------|--------------------------|-----------------------------------|--------------------------|---------------------------|------------------------------------|---------------------------|----------------|
| Marianna | 130.00 | N 30°51.000' | N 30°50'00.00" | N 30.85000° | -85°09.910' | -85°09'54.60" | -85.16516° | 115' |

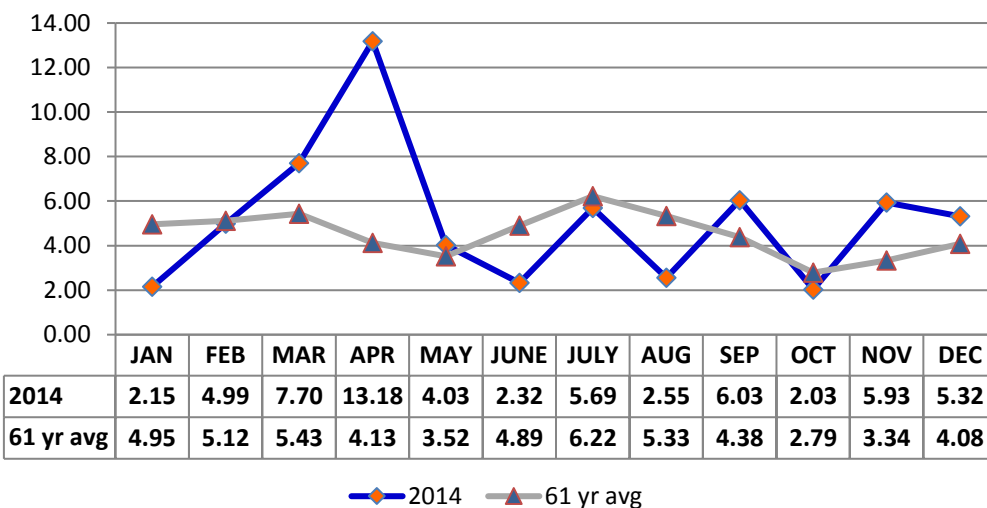
2014 Marianna UF/IFAS FAWN Weather Summary

| Month | 6' Air Temp | | | Soil Temp | | | Rainfall Inches | Dev from 61 yr Avg |
|-----------|-------------|-----|-----|-----------|-----|-----|--------------------|-----------------------|
| | High | Low | Avg | High | Low | Avg | | |
| January | 69 | 17 | 43 | 53 | 31 | 41 | 2.2 | -2.8 |
| February | 78 | 28 | 53 | 60 | 38 | 49 | 5.0 | -0.1 |
| March | 79 | 32 | 56 | 66 | 41 | 54 | 7.7 | 2.3 |
| April | 87 | 39 | 66 | 75 | 50 | 62 | 13.2 | 9.1 |
| May | 94 | 50 | 73 | 87 | 58 | 72 | 4.0 | 0.5 |
| June | 95 | 67 | 79 | 89 | 70 | 78 | 2.3 | -2.6 |
| July | 96 | 63 | 79 | 90 | 72 | 79 | 5.7 | -0.5 |
| August | 96 | 65 | 80 | 87 | 73 | 80 | 2.6 | -2.8 |
| September | 94 | 57 | 76 | 89 | 64 | 74 | 6.0 | 1.6 |
| October | 89 | 42 | 67 | 75 | 56 | 64 | 2.0 | -0.8 |
| November | 79 | 22 | 52 | 61 | 37 | 50 | 5.9 | 2.6 |
| December | 78 | 30 | 54 | 57 | 39 | 48 | 5.3 | 1.2 |
| 2014 | 96 | 17 | 65 | 90 | 31 | 63 | 61.9 | 7.7 |

Data: UF/IFAS Florida Automated Weather Network Marianna Station

Total days in 2014 <32° 24 Total days in 2014 >95° 4

Monthly Rainfall @ Marianna FAWN



January Daily Weather Data

| Temperature | | | | | | | Precipitation | | | | |
|----------------------------|---------------|-----------|-----------|----------------------------------|-----------|-----------|---------------|-------------|-----|------|--|
| Date | Air Temp 6 ft | | | Soil Temp 4 inch | | | Rain | Evapo Trans | | | |
| | Avg | Min | Max | Avg | Min | Max | Inches | Inches | | | |
| 1-Jan-14 | 48 | 44 | 52 | 46 | 44 | 47 | 0.06 | 0.04 | | | |
| 2-Jan-14 | 50 | 35 | 56 | 46 | 43 | 48 | 0.29 | 0.05 | | | |
| 3-Jan-14 | 32 | 26 | 41 | 40 | 37 | 43 | 0.00 | 0.03 | | | |
| 4-Jan-14 | 39 | 26 | 47 | 39 | 36 | 42 | 0.00 | 0.04 | | | |
| 5-Jan-14 | 55 | 42 | 66 | 44 | 41 | 48 | 0.00 | 0.05 | | | |
| 6-Jan-14 | 36 | 23 | 62 | 43 | 36 | 48 | 0.23 | 0.06 | | | |
| 7-Jan-14 | 22 | 17 | 29 | 34 | 32 | 37 | 0.00 | 0.02 | | | |
| 8-Jan-14 | 33 | 19 | 45 | 35 | 31 | 39 | 0.00 | 0.03 | | | |
| 9-Jan-14 | 47 | 40 | 57 | 40 | 37 | 42 | 0.03 | 0.04 | | | |
| 10-Jan-14 | 56 | 50 | 64 | 45 | 42 | 47 | 0.05 | 0.05 | | | |
| 11-Jan-14 | 63 | 52 | 68 | 50 | 48 | 53 | 0.41 | 0.05 | | | |
| 12-Jan-14 | 50 | 40 | 63 | 47 | 43 | 51 | 0.00 | 0.04 | | | |
| 13-Jan-14 | 52 | 40 | 64 | 47 | 43 | 50 | 0.69 | 0.05 | | | |
| 14-Jan-14 | 55 | 40 | 63 | 49 | 46 | 53 | 0.02 | 0.05 | | | |
| 15-Jan-14 | 43 | 35 | 55 | 45 | 42 | 49 | 0.00 | 0.04 | | | |
| 16-Jan-14 | 38 | 27 | 49 | 41 | 37 | 45 | 0.02 | 0.03 | | | |
| 17-Jan-14 | 47 | 33 | 61 | 41 | 37 | 46 | 0.00 | 0.05 | | | |
| 18-Jan-14 | 39 | 26 | 51 | 39 | 36 | 43 | 0.00 | 0.04 | | | |
| 19-Jan-14 | 47 | 36 | 59 | 41 | 37 | 46 | 0.07 | 0.05 | | | |
| 20-Jan-14 | 48 | 31 | 65 | 42 | 37 | 47 | 0.00 | 0.05 | | | |
| 21-Jan-14 | 48 | 33 | 59 | 43 | 40 | 47 | 0.00 | 0.05 | | | |
| 22-Jan-14 | 33 | 26 | 44 | 39 | 35 | 43 | 0.00 | 0.04 | | | |
| 23-Jan-14 | 37 | 27 | 48 | 39 | 36 | 44 | 0.00 | 0.04 | | | |
| 24-Jan-14 | 35 | 29 | 38 | 39 | 36 | 42 | 0.00 | 0.03 | | | |
| 25-Jan-14 | 42 | 34 | 53 | 39 | 37 | 42 | 0.00 | 0.05 | | | |
| 26-Jan-14 | 46 | 32 | 59 | 40 | 36 | 44 | 0.00 | 0.05 | | | |
| 27-Jan-14 | 57 | 48 | 69 | 45 | 41 | 49 | 0.07 | 0.06 | | | |
| 28-Jan-14 | 38 | 30 | 53 | 42 | 38 | 47 | 0.20 | 0.05 | | | |
| 29-Jan-14 | 25 | 22 | 30 | 35 | 32 | 38 | 0.00 | 0.03 | | | |
| 30-Jan-14 | 32 | 22 | 40 | 35 | 32 | 39 | 0.01 | 0.04 | | | |
| 31-Jan-14 | 39 | 27 | 55 | 37 | 33 | 42 | 0.00 | 0.05 | | | |
| High | | | 69 | | | 53 | | | | | |
| Low | | 17 | | | 31 | | | | | | |
| Average | 43 | 33 | 54 | 41 | 38 | 45 | | | | | |
| Days over 95 ⁰ | 0 | | | Total for Month | | | 2.15 | 1.35 | 2.2 | 1.4 | |
| | | | | Number of Rain Days | | | 13.00 | | | 13.0 | |
| Days below 32 ⁰ | 15 | | | Historic Average | | | 4.95 | | | | |
| | | | | Deviation from Average | | | -2.80 | | | -2.8 | |
| | | | | Net Gain/loss (Rain - ET) | | | 0.8 | | | 0.8 | |

Year Cumulative
Rain **ET**
2.2 1.4
13.0
5.0
-2.8
0.8

February Daily Weather Data

| Date | Temperature | | | | | | Precipitation | | | |
|----------------------------|---------------|-----------|-----------|----------------------------------|-----------|-----------|---------------|-------------|------|-----|
| | Air Temp 6 ft | | | Soil Temp 4 inch | | | Rain | Evapo Trans | | |
| | Avg | Min | Max | Avg | Min | Max | Inches | Inches | | |
| 1-Feb-14 | 52 | 40 | 64 | 42 | 38 | 47 | 0.00 | 0.06 | | |
| 2-Feb-14 | 62 | 53 | 74 | 48 | 44 | 53 | 0.01 | 0.07 | | |
| 3-Feb-14 | 62 | 56 | 67 | 51 | 50 | 53 | 0.09 | 0.05 | | |
| 4-Feb-14 | 63 | 55 | 76 | 52 | 50 | 56 | 0.00 | 0.07 | | |
| 5-Feb-14 | 59 | 39 | 70 | 54 | 48 | 57 | 0.01 | 0.08 | | |
| 6-Feb-14 | 37 | 34 | 40 | 45 | 43 | 48 | 0.04 | 0.04 | | |
| 7-Feb-14 | 43 | 32 | 56 | 44 | 39 | 50 | 0.00 | 0.06 | | |
| 8-Feb-14 | 50 | 43 | 63 | 47 | 44 | 53 | 0.16 | 0.07 | | |
| 9-Feb-14 | 52 | 38 | 67 | 48 | 43 | 54 | 0.00 | 0.07 | | |
| 10-Feb-14 | 56 | 41 | 70 | 49 | 44 | 54 | 0.00 | 0.07 | | |
| 11-Feb-14 | 53 | 43 | 61 | 51 | 49 | 53 | 0.08 | 0.06 | | |
| 12-Feb-14 | 40 | 36 | 43 | 44 | 41 | 48 | 1.77 | 0.04 | | |
| 13-Feb-14 | 42 | 36 | 55 | 42 | 39 | 46 | 0.00 | 0.07 | | |
| 14-Feb-14 | 48 | 32 | 60 | 43 | 38 | 48 | 0.00 | 0.07 | | |
| 15-Feb-14 | 47 | 37 | 57 | 45 | 41 | 50 | 0.09 | 0.07 | | |
| 16-Feb-14 | 49 | 33 | 66 | 45 | 39 | 52 | 0.00 | 0.08 | | |
| 17-Feb-14 | 56 | 39 | 69 | 48 | 43 | 53 | 0.00 | 0.08 | | |
| 18-Feb-14 | 63 | 54 | 75 | 52 | 48 | 56 | 0.00 | 0.08 | | |
| 19-Feb-14 | 64 | 51 | 77 | 54 | 49 | 60 | 0.00 | 0.09 | | |
| 20-Feb-14 | 67 | 58 | 78 | 56 | 53 | 60 | 0.00 | 0.09 | | |
| 21-Feb-14 | 61 | 48 | 70 | 57 | 53 | 60 | 0.90 | 0.09 | | |
| 22-Feb-14 | 55 | 42 | 68 | 53 | 48 | 58 | 0.00 | 0.08 | | |
| 23-Feb-14 | 55 | 46 | 61 | 51 | 49 | 52 | 1.04 | 0.05 | | |
| 24-Feb-14 | 63 | 56 | 72 | 55 | 52 | 60 | 0.00 | 0.09 | | |
| 25-Feb-14 | 62 | 49 | 75 | 56 | 51 | 60 | 0.00 | 0.09 | | |
| 26-Feb-14 | 49 | 40 | 58 | 52 | 47 | 55 | 0.80 | 0.06 | | |
| 27-Feb-14 | 41 | 33 | 52 | 47 | 43 | 51 | 0.00 | 0.07 | | |
| 28-Feb-14 | 45 | 28 | 61 | 47 | 40 | 53 | 0.00 | 0.07 | | |
| | | | | | | | | | | |
| | | | | | | | | | | |
| | | | | | | | | | | |
| | | | | | | | | | | |
| High | | | 78 | | | 60 | | | | |
| Low | | 28 | | | 38 | | | | | |
| Average | 53 | 43 | 65 | 49 | 45 | 54 | | | | |
| Days over 95 ^u | | | 0 | Total for Month | | | 4.99 | 1.97 | 7.1 | 3.3 |
| | | | | Number of Rain Days | | | 11.00 | | 24.0 | |
| | | | | 59 year Average | | | 5.12 | | 10.1 | |
| Days below 32 ^u | | 2 | | Deviation from Average | | | -0.13 | | -2.9 | |
| | | | | Net Gain/loss (Rain - ET) | | | | 3.02 | | 3.8 |

Year Cumulative
Rain ET
7.1 3.3
24.0
10.1
-2.9
3.8

March Daily Weather Data

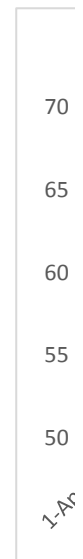
| Date | Temperature | | | | | | Precipitation | | | |
|----------------------------|---------------|-----------|-----------|----------------------------------|-----------|-----------|---------------|-------------|------|-----|
| | Air Temp 6 ft | | | Soil Temp 4 inch | | | Rain | Evapo Trans | | |
| | Avg | Min | Max | Avg | Min | Max | Inches | Inches | | |
| 1-Mar-14 | 54 | 40 | 70 | 50 | 44 | 57 | 0.00 | 0.09 | | |
| 2-Mar-14 | 59 | 42 | 76 | 52 | 46 | 59 | 0.00 | 0.1 | | |
| 3-Mar-14 | 58 | 41 | 72 | 53 | 50 | 56 | 0.00 | 0.09 | | |
| 4-Mar-14 | 43 | 39 | 46 | 48 | 47 | 50 | 0.00 | 0.04 | | |
| 5-Mar-14 | 46 | 40 | 56 | 48 | 45 | 53 | 0.20 | 0.07 | | |
| 6-Mar-14 | 45 | 38 | 49 | 47 | 44 | 49 | 0.84 | 0.05 | | |
| 7-Mar-14 | 44 | 38 | 54 | 45 | 42 | 48 | 0.01 | 0.06 | | |
| 8-Mar-14 | 52 | 36 | 67 | 48 | 41 | 56 | 0.00 | 0.09 | | |
| 9-Mar-14 | 58 | 45 | 72 | 52 | 46 | 58 | 0.00 | 0.1 | | |
| 10-Mar-14 | 63 | 47 | 77 | 54 | 48 | 61 | 0.00 | 0.11 | | |
| 11-Mar-14 | 63 | 54 | 74 | 56 | 52 | 60 | 0.17 | 0.09 | | |
| 12-Mar-14 | 62 | 46 | 73 | 57 | 52 | 61 | 0.00 | 0.09 | | |
| 13-Mar-14 | 48 | 37 | 60 | 51 | 47 | 57 | 0.00 | 0.09 | | |
| 14-Mar-14 | 52 | 36 | 69 | 51 | 46 | 58 | 0.00 | 0.09 | | |
| 15-Mar-14 | 58 | 43 | 69 | 53 | 48 | 56 | 0.00 | 0.08 | | |
| 16-Mar-14 | 60 | 57 | 69 | 52 | 52 | 53 | 3.69 | 0.05 | | |
| 17-Mar-14 | 59 | 52 | 63 | 53 | 51 | 54 | 0.47 | 0.06 | | |
| 18-Mar-14 | 52 | 49 | 58 | 52 | 50 | 55 | 0.21 | 0.07 | | |
| 19-Mar-14 | 59 | 51 | 72 | 55 | 50 | 62 | 0.00 | 0.11 | | |
| 20-Mar-14 | 61 | 48 | 75 | 57 | 51 | 63 | 0.00 | 0.11 | | |
| 21-Mar-14 | 62 | 46 | 75 | 58 | 52 | 64 | 0.00 | 0.11 | | |
| 22-Mar-14 | 64 | 54 | 78 | 60 | 55 | 66 | 0.00 | 0.12 | | |
| 23-Mar-14 | 62 | 55 | 72 | 59 | 57 | 63 | 0.03 | 0.09 | | |
| 24-Mar-14 | 59 | 51 | 65 | 58 | 55 | 62 | 0.00 | 0.09 | | |
| 25-Mar-14 | 56 | 44 | 62 | 58 | 54 | 62 | 0.00 | 0.1 | | |
| 26-Mar-14 | 46 | 32 | 56 | 54 | 49 | 60 | 0.00 | 0.08 | | |
| 27-Mar-14 | 56 | 41 | 68 | 55 | 50 | 60 | 0.00 | 0.1 | | |
| 28-Mar-14 | 60 | 58 | 62 | 55 | 54 | 56 | 1.57 | 0.04 | | |
| 29-Mar-14 | 63 | 54 | 72 | 57 | 53 | 61 | 0.51 | 0.11 | | |
| 30-Mar-14 | 55 | 45 | 69 | 56 | 50 | 62 | 0.00 | 0.12 | | |
| 31-Mar-14 | 60 | 41 | 79 | 57 | 50 | 65 | 0.00 | 0.12 | | |
| High | | | 79 | | | 66 | | | | |
| Low | | 32 | | | 41 | | | | | |
| Average | 56 | 45 | 67 | 54 | 49 | 58 | | | | |
| Days over 95 ^o | 0 | | | Total for Month | | | 7.70 | 2.72 | 14.8 | 6.0 |
| | | | | Number of Rain Days | | | 10.00 | | 34.0 | |
| Days below 32 ^o | 0 | | | 59 year Average | | | 5.43 | | 15.5 | |
| | | | | Deviation from Average | | | 2.27 | | -0.7 | |
| | | | | Net Gain/loss (Rain - ET) | | | | 4.98 | | 8.8 |

Year Cumulative

| | |
|------|-----|
| Rain | ET |
| 14.8 | 6.0 |
| 34.0 | |
| 15.5 | |
| -0.7 | |
| | 8.8 |

April Daily Weather Data

| Date | Temperature | | | | | | Precipitation | |
|----------------------------|---------------|-----------|-----------|----------------------------------|-----------|-----------|---------------|-------------|
| | Air Temp 6 ft | | | Soil Temp 4 inch | | | Rain | Evapo Trans |
| | Avg | Min | Max | Avg | Min | Max | Inches | Inches |
| 1-Apr-14 | 61 | 43 | 81 | 59 | 53 | 66 | 0.00 | 0.13 |
| 2-Apr-14 | 63 | 48 | 81 | 60 | 55 | 66 | 0.00 | 0.12 |
| 3-Apr-14 | 69 | 58 | 82 | 61 | 57 | 67 | 0.00 | 0.14 |
| 4-Apr-14 | 71 | 62 | 81 | 63 | 59 | 67 | 0.00 | 0.12 |
| 5-Apr-14 | 69 | 63 | 78 | 64 | 60 | 67 | 0.12 | 0.1 |
| 6-Apr-14 | 67 | 65 | 70 | 62 | 61 | 64 | 0.03 | 0.06 |
| 7-Apr-14 | 69 | 63 | 72 | 61 | 60 | 62 | 2.54 | 0.06 |
| 8-Apr-14 | 59 | 52 | 67 | 60 | 56 | 65 | 0.00 | 0.12 |
| 9-Apr-14 | 58 | 49 | 71 | 59 | 55 | 64 | 0.00 | 0.13 |
| 10-Apr-14 | 61 | 45 | 76 | 60 | 54 | 67 | 0.00 | 0.13 |
| 11-Apr-14 | 64 | 49 | 77 | 61 | 56 | 66 | 0.00 | 0.12 |
| 12-Apr-14 | 68 | 53 | 83 | 63 | 57 | 69 | 0.00 | 0.14 |
| 13-Apr-14 | 70 | 59 | 82 | 64 | 59 | 69 | 0.00 | 0.14 |
| 14-Apr-14 | 73 | 64 | 81 | 65 | 61 | 68 | 1.43 | 0.12 |
| 15-Apr-14 | 56 | 45 | 66 | 59 | 54 | 64 | 1.66 | 0.08 |
| 16-Apr-14 | 52 | 39 | 64 | 57 | 50 | 63 | 0.00 | 0.12 |
| 17-Apr-14 | 60 | 50 | 70 | 59 | 54 | 64 | 0.03 | 0.12 |
| 18-Apr-14 | 56 | 54 | 60 | 56 | 54 | 59 | 3.43 | 0.05 |
| 19-Apr-14 | 58 | 53 | 64 | 55 | 53 | 57 | 0.01 | 0.07 |
| 20-Apr-14 | 57 | 53 | 63 | 55 | 54 | 57 | 0.00 | 0.07 |
| 21-Apr-14 | 64 | 50 | 78 | 59 | 51 | 67 | 0.00 | 0.14 |
| 22-Apr-14 | 68 | 55 | 80 | 62 | 56 | 68 | 0.00 | 0.14 |
| 23-Apr-14 | 71 | 60 | 83 | 65 | 59 | 71 | 0.00 | 0.15 |
| 24-Apr-14 | 72 | 63 | 85 | 67 | 62 | 73 | 0.00 | 0.15 |
| 25-Apr-14 | 73 | 65 | 83 | 67 | 63 | 71 | 0.00 | 0.13 |
| 26-Apr-14 | 74 | 64 | 85 | 69 | 64 | 75 | 0.00 | 0.16 |
| 27-Apr-14 | 73 | 64 | 83 | 69 | 66 | 73 | 0.00 | 0.13 |
| 28-Apr-14 | 77 | 66 | 87 | 70 | 66 | 74 | 0.00 | 0.14 |
| 29-Apr-14 | 69 | 64 | 74 | 66 | 64 | 70 | 1.49 | 0.06 |
| 30-Apr-14 | 67 | 65 | 73 | 62 | 61 | 64 | 2.44 | 0.06 |
| | | | | | | | | |
| High | | | 87 | | | 75 | | |
| Low | | 39 | | | 50 | | | |
| Average | 66 | 56 | 76 | 62 | 58 | 67 | | |
| Days over 95 ⁰ | | | 0 | Total for Month | | | 13.18 | 3.40 |
| | | | | Number of Rain Days | | | 10.00 | |
| | | | | 59 year Average | | | 4.13 | |
| Days below 32 ⁰ | | 0 | | Deviation from Average | | | 9.05 | |
| | | | | Net Gain/loss (Rain - ET) | | | | 9.78 |



| | |
|------------------------|-----------|
| Year Cumulative | |
| Rain | ET |
| 28.0 | 9.4 |
| 44.0 | |
| 19.6 | |
| 8.4 | |
| | 18.6 |

May Daily Weather Data

| Temperature | | | | | | | Precipitation | |
|----------------------------------|---------------|-----------|-----------|------------------|-----------|-----------|---------------|--------------|
| Date | Air Temp 6 ft | | | Soil Temp 4 inch | | | Rain | Evapo Trans |
| | Avg | Min | Max | Avg | Min | Max | Inches | Inches |
| 1-May-14 | 59 | 56 | 68 | 61 | 59 | 62 | 1.01 | 0.07 |
| 2-May-14 | 62 | 56 | 68 | 61 | 58 | 64 | 0.06 | 0.09 |
| 3-May-14 | 66 | 58 | 77 | 64 | 58 | 70 | 0.00 | 0.15 |
| 4-May-14 | 71 | 56 | 85 | 66 | 59 | 73 | 0.00 | 0.17 |
| 5-May-14 | 73 | 58 | 88 | 69 | 62 | 76 | 0.00 | 0.17 |
| 6-May-14 | 71 | 58 | 87 | 70 | 64 | 77 | 0.00 | 0.17 |
| 7-May-14 | 73 | 57 | 87 | 71 | 65 | 77 | 0.00 | 0.16 |
| 8-May-14 | 76 | 63 | 88 | 72 | 67 | 78 | 0.00 | 0.17 |
| 9-May-14 | 76 | 69 | 83 | 72 | 69 | 74 | 0.00 | 0.13 |
| 10-May-14 | 74 | 68 | 81 | 70 | 68 | 72 | 0.00 | 0.09 |
| 11-May-14 | 75 | 70 | 85 | 71 | 68 | 77 | 0.07 | 0.13 |
| 12-May-14 | 76 | 68 | 86 | 72 | 68 | 77 | 0.00 | 0.14 |
| 13-May-14 | 77 | 67 | 87 | 73 | 68 | 79 | 0.00 | 0.17 |
| 14-May-14 | 76 | 67 | 87 | 74 | 70 | 79 | 0.56 | 0.15 |
| 15-May-14 | 63 | 54 | 68 | 69 | 65 | 71 | 0.02 | 0.1 |
| 16-May-14 | 64 | 50 | 76 | 67 | 61 | 74 | 0.00 | 0.15 |
| 17-May-14 | 69 | 54 | 81 | 70 | 63 | 77 | 0.00 | 0.16 |
| 18-May-14 | 73 | 60 | 84 | 72 | 66 | 80 | 0.00 | 0.17 |
| 19-May-14 | 73 | 63 | 85 | 73 | 68 | 79 | 0.00 | 0.16 |
| 20-May-14 | 75 | 64 | 87 | 74 | 69 | 80 | 0.00 | 0.16 |
| 21-May-14 | 76 | 65 | 87 | 75 | 70 | 81 | 0.00 | 0.17 |
| 22-May-14 | 77 | 64 | 90 | 76 | 70 | 83 | 0.02 | 0.19 |
| 23-May-14 | 79 | 66 | 92 | 77 | 71 | 85 | 0.00 | 0.19 |
| 24-May-14 | 80 | 68 | 92 | 78 | 73 | 85 | 0.00 | 0.18 |
| 25-May-14 | 79 | 68 | 94 | 78 | 74 | 87 | 1.21 | 0.18 |
| 26-May-14 | 75 | 68 | 89 | 75 | 71 | 82 | 0.24 | 0.16 |
| 27-May-14 | 75 | 70 | 86 | 74 | 72 | 79 | 0.68 | 0.12 |
| 28-May-14 | 78 | 70 | 89 | 75 | 71 | 81 | 0.00 | 0.17 |
| 29-May-14 | 74 | 70 | 83 | 74 | 72 | 76 | 0.14 | 0.11 |
| 30-May-14 | 74 | 70 | 84 | 73 | 71 | 78 | 0.02 | 0.12 |
| 31-May-14 | 77 | 70 | 86 | 74 | 71 | 79 | 0.00 | 0.13 |
| High | | | 94 | | | 87 | | |
| Low | | 50 | | | 58 | | | |
| Average | 73 | 63 | 84 | 72 | 67 | 77 | | |
| Total for Month | | | | | | | 4.03 | 4.58 |
| Days over 95 ^o | | | | | | | | 0 |
| Days of 100 ^o | | | | | | | | 0 |
| Days below 32 ^o | | | | | | | 0 | |
| Number of Rain Days | | | | | | | 11.00 | |
| 59 year Average | | | | | | | 3.52 | |
| Deviation from Average | | | | | | | 0.51 | |
| Net Gain/loss (Rain - ET) | | | | | | | | -0.55 |

| | |
|------------------------|-----------|
| Year Cumulative | |
| Rain | ET |
| 32.1 | 14.0 |
| 55.0 | |
| 23.2 | |
| 8.9 | |
| | 18.0 |

June Daily Weather Data

| Temperature | | | | | | | Precipitation | | | |
|----------------------------|---------------|-----------|-----------|------------------|-----------|-----------|----------------------------------|-------------|-------------|-------------|
| Date | Air Temp 6 ft | | | Soil Temp 4 inch | | | Rain | Evapo Trans | | |
| | Avg | Min | Max | Avg | Min | Max | Inches | Inches | | |
| 1-Jun-14 | 76 | 70 | 85 | 74 | 71 | 78 | 0.09 | 0.14 | | |
| 2-Jun-14 | 76 | 69 | 83 | 73 | 70 | 76 | 0.00 | 0.13 | | |
| 3-Jun-14 | 76 | 70 | 83 | 74 | 70 | 77 | 0.00 | 0.13 | | |
| 4-Jun-14 | 78 | 67 | 87 | 75 | 70 | 80 | 0.00 | 0.16 | | |
| 5-Jun-14 | 80 | 69 | 90 | 77 | 71 | 83 | 0.00 | 0.19 | | |
| 6-Jun-14 | 80 | 70 | 92 | 79 | 73 | 85 | 0.31 | 0.19 | | |
| 7-Jun-14 | 78 | 68 | 88 | 77 | 73 | 82 | 0.00 | 0.15 | | |
| 8-Jun-14 | 78 | 70 | 90 | 78 | 75 | 83 | 0.03 | N/A | | |
| 9-Jun-14 | 81 | 70 | 91 | 78 | 73 | 85 | 0.00 | 0.19 | | |
| 10-Jun-14 | 81 | 72 | 91 | 79 | 75 | 84 | 0.00 | 0.19 | | |
| 11-Jun-14 | 77 | 71 | 84 | 78 | 75 | 81 | 0.00 | 0.15 | | |
| 12-Jun-14 | 80 | 70 | 89 | 78 | 73 | 84 | 0.00 | 0.18 | | |
| 13-Jun-14 | 77 | 71 | 85 | 77 | 74 | 80 | 0.19 | N/A | | |
| 14-Jun-14 | 79 | 69 | 89 | 78 | 72 | 85 | 0.00 | N/A | | |
| 15-Jun-14 | 79 | 70 | 90 | 79 | 74 | 85 | 0.00 | N/A | | |
| 16-Jun-14 | 80 | 71 | 93 | 80 | 75 | 88 | 0.66 | N/A | | |
| 17-Jun-14 | 81 | 71 | 93 | 80 | 74 | 87 | 0.00 | 0.18 | | |
| 18-Jun-14 | 82 | 71 | 94 | 81 | 75 | 87 | 0.00 | 0.2 | | |
| 19-Jun-14 | 80 | 73 | 93 | 80 | 76 | 87 | 0.16 | 0.17 | | |
| 20-Jun-14 | 78 | 71 | 94 | 79 | 74 | 87 | 0.01 | 0.17 | | |
| 21-Jun-14 | 81 | 71 | 93 | 79 | 74 | 85 | 0.01 | 0.17 | | |
| 22-Jun-14 | 78 | 70 | 91 | 79 | 75 | 85 | 0.76 | 0.16 | | |
| 23-Jun-14 | 75 | 70 | 88 | 77 | 73 | 84 | 0.01 | 0.15 | | |
| 24-Jun-14 | 78 | 72 | 88 | 77 | 74 | 82 | 0.08 | 0.15 | | |
| 25-Jun-14 | 79 | 72 | 89 | 78 | 74 | 83 | 0.01 | 0.17 | | |
| 26-Jun-14 | 81 | 74 | 89 | 78 | 75 | 83 | 0.00 | 0.15 | | |
| 27-Jun-14 | 82 | 72 | 93 | 80 | 75 | 86 | 0.00 | 0.19 | | |
| 28-Jun-14 | 81 | 74 | 92 | 80 | 76 | 85 | 0.00 | 0.17 | | |
| 29-Jun-14 | 84 | 74 | 95 | 82 | 76 | 88 | 0.00 | 0.2 | | |
| 30-Jun-14 | 84 | 74 | 95 | 83 | 78 | 89 | 0.00 | 0.19 | | |
| High | | | 95 | | | 89 | | | | |
| Low | | 67 | | | 70 | | | | | |
| Average | 79 | 71 | 90 | 78 | 74 | 84 | | | | |
| Days over 95 ^o | | | | 0 | | | Total for Month | | 2.32 | 4.22 |
| Days of 100 ^o | | | | 0 | | | Number of Rain Days | | 12.00 | |
| Days below 32 ^o | | | | 0 | | | 59 year Average | | 4.89 | |
| | | | | | | | Deviation from Average | | -2.57 | |
| | | | | | | | Net Gain/loss (Rain - ET) | | | -1.9 |

| | |
|------------------------|-----------|
| Year Cumulative | |
| Rain | ET |
| 34.4 | 18.2 |
| 67.0 | |
| 28.1 | |
| 6.3 | |
| | 16.1 |

July Daily Weather Data

| Date | Temperature | | | | | | Precipitation | |
|----------------------------|---------------|-----------|-----------|------------------------|-----------|-----------|----------------------------------|----------------|
| | Air Temp 6 ft | | | Soil Temp 4 inch | | | Rain | Evapo Trans |
| | Avg | Min | Max | Avg | Min | Max | Inches | Inches |
| 1-Jul-14 | 85 | 74 | 96 | 83 | 78 | 89 | 0.00 | 0.2 |
| 2-Jul-14 | 85 | 75 | 94 | 83 | 79 | 88 | 0.00 | 0.17 |
| 3-Jul-14 | 84 | 75 | 94 | 84 | 79 | 90 | 0.00 | 0.2 |
| 4-Jul-14 | 79 | 68 | 90 | 83 | 77 | 90 | 0.00 | N/A |
| 5-Jul-14 | 80 | 66 | 93 | 83 | 77 | 90 | 0.00 | N/A |
| 6-Jul-14 | 80 | 66 | 93 | 83 | 77 | 89 | 0.00 | N/A |
| 7-Jul-14 | 82 | 70 | 94 | 83 | 78 | 90 | 0.00 | 0.19 |
| 8-Jul-14 | 83 | 72 | 94 | 84 | 78 | 90 | 0.00 | 0.19 |
| 9-Jul-14 | 81 | 73 | 93 | 84 | 79 | 90 | 0.00 | 0.18 |
| 10-Jul-14 | 78 | 71 | 91 | 82 | 78 | 88 | 0.89 | N/A |
| 11-Jul-14 | 79 | 71 | 89 | 80 | 76 | 85 | 0.00 | 0.15 |
| 12-Jul-14 | 77 | 72 | 91 | 79 | 76 | 86 | 1.54 | 0.14 |
| 13-Jul-14 | 79 | 72 | 88 | 78 | 74 | 83 | 0.11 | 0.15 |
| 14-Jul-14 | 82 | 73 | 91 | 80 | 75 | 86 | 0.00 | 0.19 |
| 15-Jul-14 | 77 | 71 | 85 | 78 | 75 | 80 | 0.22 | 0.11 |
| 16-Jul-14 | 77 | 71 | 87 | 77 | 74 | 81 | 0.00 | 0.14 |
| 17-Jul-14 | 77 | 66 | 87 | 78 | 73 | 83 | 0.00 | 0.18 |
| 18-Jul-14 | 78 | 67 | 88 | 77 | 73 | 82 | 0.00 | 0.14 |
| 19-Jul-14 | 76 | 72 | 82 | 75 | 73 | 77 | 0.94 | 0.08 |
| 20-Jul-14 | 77 | 72 | 84 | 75 | 73 | 77 | 0.06 | N/A |
| 21-Jul-14 | 77 | 73 | 81 | 74 | 73 | 77 | 0.00 | 0.1 |
| 22-Jul-14 | 79 | 71 | 89 | 77 | 72 | 83 | 0.00 | 0.17 |
| 23-Jul-14 | 79 | 71 | 89 | 77 | 74 | 82 | 0.92 | 0.16 |
| 24-Jul-14 | 78 | 72 | 86 | 77 | 74 | 79 | 0.06 | 0.13 |
| 25-Jul-14 | 78 | 72 | 87 | 77 | 74 | 80 | 0.34 | 0.14 |
| 26-Jul-14 | 83 | 77 | 92 | 79 | 75 | 84 | 0.00 | 0.19 |
| 27-Jul-14 | 84 | 76 | 93 | 80 | 76 | 85 | 0.00 | 0.19 |
| 28-Jul-14 | 82 | 71 | 95 | 80 | 77 | 86 | 0.60 | 0.18 |
| 29-Jul-14 | 78 | 69 | 87 | 78 | 75 | 83 | 0.01 | 0.19 |
| 30-Jul-14 | 75 | 67 | 85 | 77 | 73 | 83 | 0.00 | 0.18 |
| 31-Jul-14 | 76 | 63 | 88 | 78 | 72 | 84 | 0.00 | 0.17 |
| High | | | 96 | | | 90 | | |
| Low | | 63 | | | 72 | | | |
| Average | 79 | 71 | 90 | 79 | 75 | 85 | | |
| | | | | Total for Month | | | 5.69 | 4.21 |
| Days over 95 ^o | | | | 1 | | | Number of Rain Days | |
| Days of 100 ^o | | | | 0 | | | 11.00 | |
| Days below 32 ^o | | | | 0 | | | 59 year Average | |
| | | | | | | | 6.22 | |
| | | | | | | | Deviation from Average | |
| | | | | | | | -0.53 | |
| | | | | | | | Net Gain/loss (Rain - ET) | |
| | | | | | | | 1.48 | |

| | |
|------------------------|-----------|
| Year Cumulative | |
| Rain | ET |
| 40.1 | 22.5 |
| 78.0 | |
| 34.3 | |
| 5.8 | |
| | 17.6 |

August Daily Weather Data

| Date | Temperature | | | | | | Precipitation | | | |
|----------------------------|---------------|-----------|-----------|----------------------------------|-----------|-----------|---------------|--------------|------|------|
| | Air Temp 6 ft | | | Soil Temp 4 inch | | | Rain | Evapo Trans | | |
| | Avg | Min | Max | Avg | Min | Max | Inches | Inches | | |
| 1-Aug-14 | 79 | 68 | 89 | 78 | 74 | 83 | 0.00 | 0.16 | | |
| 2-Aug-14 | 79 | 73 | 89 | 79 | 75 | 84 | 0.00 | 0.15 | | |
| 3-Aug-14 | 78 | 72 | 87 | 78 | 75 | 81 | 0.00 | 0.12 | | |
| 4-Aug-14 | 80 | 73 | 88 | 79 | 75 | 82 | 0.00 | 0.14 | | |
| 5-Aug-14 | 82 | 71 | 93 | 80 | 75 | 85 | 0.00 | 0.18 | | |
| 6-Aug-14 | 83 | 74 | 94 | 81 | 76 | 86 | 0.00 | 0.19 | | |
| 7-Aug-14 | 83 | 73 | 95 | 81 | 77 | 86 | 0.00 | 0.18 | | |
| 8-Aug-14 | 82 | 73 | 94 | 81 | 77 | 87 | 0.00 | 0.17 | | |
| 9-Aug-14 | 81 | 74 | 93 | 80 | 77 | 85 | 0.00 | 0.15 | | |
| 10-Aug-14 | 79 | 72 | 90 | 80 | 76 | 86 | 0.00 | 0.16 | | |
| 11-Aug-14 | 80 | 73 | 90 | 80 | 77 | 85 | 1.44 | 0.14 | | |
| 12-Aug-14 | 80 | 74 | 91 | 79 | 75 | 83 | 0.10 | 0.16 | | |
| 13-Aug-14 | 82 | 73 | 92 | 79 | 75 | 84 | 0.01 | 0.17 | | |
| 14-Aug-14 | 82 | 72 | 91 | 80 | 75 | 84 | 0.00 | 0.17 | | |
| 15-Aug-14 | 81 | 72 | 91 | 80 | 76 | 85 | 0.00 | 0.17 | | |
| 16-Aug-14 | 81 | 69 | 92 | 80 | 75 | 86 | 0.00 | 0.18 | | |
| 17-Aug-14 | 78 | 71 | 88 | 79 | 76 | 82 | 0.07 | 0.12 | | |
| 18-Aug-14 | 77 | 71 | 88 | 76 | 74 | 80 | 0.19 | 0.11 | | |
| 19-Aug-14 | 79 | 71 | 91 | 77 | 73 | 83 | 0.47 | 0.16 | | |
| 20-Aug-14 | 79 | 70 | 92 | 77 | 73 | 83 | 0.01 | 0.14 | | |
| 21-Aug-14 | 82 | 73 | 95 | 79 | 74 | 85 | 0.00 | 0.18 | | |
| 22-Aug-14 | 83 | 73 | 96 | 80 | 76 | 86 | 0.00 | 0.17 | | |
| 23-Aug-14 | 85 | 75 | 96 | 81 | 77 | 86 | 0.00 | 0.18 | | |
| 24-Aug-14 | 82 | 75 | 95 | 81 | 77 | 86 | 0.01 | 0.16 | | |
| 25-Aug-14 | 79 | 71 | 88 | 81 | 76 | 87 | 0.00 | 0.17 | | |
| 26-Aug-14 | 79 | 68 | 90 | 80 | 75 | 86 | 0.00 | 0.16 | | |
| 27-Aug-14 | 79 | 69 | 92 | 81 | 76 | 87 | 0.00 | 0.17 | | |
| 28-Aug-14 | 79 | 65 | 92 | 80 | 75 | 87 | 0.00 | 0.16 | | |
| 29-Aug-14 | 77 | 68 | 92 | 78 | 76 | 84 | 0.24 | 0.12 | | |
| 30-Aug-14 | 81 | 73 | 92 | 79 | 74 | 86 | 0.01 | 0.16 | | |
| 31-Aug-14 | 81 | 73 | 94 | 80 | 75 | 87 | 0.00 | 0.17 | | |
| High | | | 96 | | | 87 | | | | |
| Low | | 65 | | | 73 | | | | | |
| Average | 80 | 72 | 92 | 80 | 75 | 85 | | | | |
| | | | | Total for Month | | | 2.55 | 4.92 | 42.6 | 27.4 |
| Days over 95 ^o | | | | | | | | | 88.0 | |
| Days of 100 ^o | | | | | | | | | 39.6 | |
| Days below 32 ^o | | | | | | | | | 3.0 | |
| | | | | Deviation from Average | | | -2.78 | | | |
| | | | | Net Gain/loss (Rain - ET) | | | | -2.37 | | 15.2 |

Year Cumulative

| | |
|-------------|-----------|
| Rain | ET |
| 42.6 | 27.4 |
| 88.0 | |
| 39.6 | |
| 3.0 | |
| | 15.2 |

September Daily Weather Data

| Temperature | | | | | | | Precipitation | | |
|----------------------------------|---------------|-----------|-----------|------------------|-----------|-----------|---------------|-------------|--|
| Date | Air Temp 6 ft | | | Soil Temp 4 inch | | | Rain | Evapo Trans | |
| | Avg | Min | Max | Avg | Min | Max | Inches | Inches | |
| 1-Sep-14 | 81 | 71 | 94 | 81 | 76 | 88 | 0.00 | 0.17 | |
| 2-Sep-14 | 82 | 71 | 94 | 82 | 76 | 89 | 0.31 | 0.18 | |
| 3-Sep-14 | 77 | 71 | 87 | 78 | 75 | 82 | 0.53 | 0.11 | |
| 4-Sep-14 | 78 | 72 | 91 | 78 | 74 | 84 | 0.22 | 0.15 | |
| 5-Sep-14 | 81 | 71 | 93 | 78 | 73 | 84 | 0.01 | 0.17 | |
| 6-Sep-14 | 77 | 72 | 92 | 77 | 75 | 84 | 0.94 | 0.13 | |
| 7-Sep-14 | 77 | 71 | 91 | 76 | 73 | 82 | 0.16 | 0.13 | |
| 8-Sep-14 | 75 | 72 | 85 | 75 | 73 | 77 | 1.56 | 0.08 | |
| 9-Sep-14 | 79 | 72 | 89 | 76 | 72 | 80 | 0.00 | 0.14 | |
| 10-Sep-14 | 79 | 72 | 88 | 77 | 73 | 81 | 0.00 | 0.14 | |
| 11-Sep-14 | 80 | 72 | 93 | 77 | 73 | 82 | 0.00 | 0.16 | |
| 12-Sep-14 | 81 | 70 | 92 | 78 | 73 | 83 | 0.00 | 0.16 | |
| 13-Sep-14 | 80 | 73 | 92 | 78 | 74 | 82 | 0.25 | 0.15 | |
| 14-Sep-14 | 79 | 71 | 91 | 77 | 73 | 83 | 0.20 | 0.16 | |
| 15-Sep-14 | 78 | 71 | 88 | 77 | 73 | 80 | 0.01 | 0.12 | |
| 16-Sep-14 | 75 | 70 | 86 | 74 | 72 | 78 | 1.56 | 0.08 | |
| 17-Sep-14 | 76 | 69 | 89 | 74 | 71 | 79 | 0.04 | 0.14 | |
| 18-Sep-14 | 77 | 67 | 89 | 74 | 71 | 79 | 0.00 | 0.14 | |
| 19-Sep-14 | 74 | 68 | 84 | 73 | 71 | 76 | 0.00 | 0.11 | |
| 20-Sep-14 | 73 | 68 | 82 | 72 | 70 | 75 | 0.00 | 0.1 | |
| 21-Sep-14 | 74 | 64 | 86 | 72 | 68 | 77 | 0.00 | 0.14 | |
| 22-Sep-14 | 71 | 63 | 88 | 72 | 68 | 78 | 0.12 | 0.12 | |
| 23-Sep-14 | 70 | 64 | 79 | 70 | 68 | 74 | 0.01 | 0.1 | |
| 24-Sep-14 | 67 | 62 | 76 | 69 | 66 | 73 | 0.00 | 0.1 | |
| 25-Sep-14 | 66 | 61 | 71 | 67 | 66 | 68 | 0.00 | 0.06 | |
| 26-Sep-14 | 70 | 57 | 82 | 67 | 64 | 72 | 0.00 | 0.1 | |
| 27-Sep-14 | 72 | 69 | 77 | 68 | 67 | 70 | 0.00 | 0.07 | |
| 28-Sep-14 | 73 | 71 | 76 | 68 | 67 | 69 | 0.09 | 0.05 | |
| 29-Sep-14 | 74 | 71 | 81 | 69 | 67 | 72 | 0.02 | 0.08 | |
| 30-Sep-14 | 72 | 64 | 77 | 68 | 67 | 70 | 0.00 | 0.07 | |
| | | | | | | | | | |
| High | | | 94 | | | 89 | | | |
| Low | | 57 | | | 64 | | | | |
| Average | 76 | 69 | 86 | 74 | 71 | 78 | | | |
| Total for Month | | | | | | | 6.03 | 3.61 | |
| Number of Rain Days | | | | | | | 16.00 | | |
| 59 year Average | | | | | | | 4.38 | | |
| Deviation from Average | | | | | | | 1.65 | | |
| Net Gain/loss (Rain - ET) | | | | | | | | 2.42 | |
| Days over 95 ^o | | | 0 | | | | | | |
| Days of 100 ^o | | | 0 | | | | | | |
| Days below 32 ^o | 0 | | | | | | | | |

| | |
|------------------------|-----------|
| Year Cumulative | |
| Rain | ET |
| 48.6 | 31.0 |
| 104.0 | |
| 44.0 | |
| 4.7 | |
| | 17.7 |

October Daily Weather Data

| Temperature | | | | | | | Precipitation | |
|----------------------------|---------------|-----------|-----------|----------------------------------|-----------|-----------|---------------|----------------|
| Date | Air Temp 6 ft | | | Soil Temp 4 inch | | | Rain | Evapo Trans |
| | Avg | Min | Max | Avg | Min | Max | Inches | Inches |
| 1-Oct-14 | 72 | 62 | 83 | 68 | 64 | 71 | 0.00 | 0.09 |
| 2-Oct-14 | 76 | 67 | 87 | 69 | 66 | 73 | 0.00 | 0.11 |
| 3-Oct-14 | 75 | 68 | 83 | 69 | 68 | 71 | 0.24 | 0.09 |
| 4-Oct-14 | 64 | 49 | 72 | 66 | 62 | 70 | 0.00 | 0.1 |
| 5-Oct-14 | 58 | 44 | 73 | 63 | 59 | 69 | 0.00 | 0.09 |
| 6-Oct-14 | 64 | 47 | 80 | 64 | 59 | 69 | 0.00 | 0.1 |
| 7-Oct-14 | 70 | 55 | 86 | 65 | 61 | 71 | 0.00 | 0.11 |
| 8-Oct-14 | 73 | 64 | 87 | 68 | 64 | 73 | 0.00 | 0.11 |
| 9-Oct-14 | 75 | 61 | 89 | 69 | 64 | 74 | 0.00 | 0.12 |
| 10-Oct-14 | 75 | 63 | 89 | 69 | 66 | 74 | 0.00 | 0.11 |
| 11-Oct-14 | 74 | 64 | 89 | 70 | 66 | 74 | 0.00 | 0.11 |
| 12-Oct-14 | 75 | 63 | 88 | 70 | 66 | 75 | 0.00 | 0.11 |
| 13-Oct-14 | 75 | 68 | 84 | 69 | 67 | 71 | 0.64 | 0.08 |
| 14-Oct-14 | 71 | 59 | 76 | 66 | 64 | 68 | 1.06 | 0.07 |
| 15-Oct-14 | 63 | 53 | 77 | 63 | 61 | 67 | 0.02 | 0.09 |
| 16-Oct-14 | 62 | 51 | 76 | 61 | 58 | 65 | 0.00 | 0.09 |
| 17-Oct-14 | 63 | 48 | 81 | 61 | 57 | 66 | 0.00 | 0.09 |
| 18-Oct-14 | 68 | 53 | 82 | 62 | 58 | 67 | 0.00 | 0.1 |
| 19-Oct-14 | 62 | 51 | 75 | 62 | 59 | 66 | 0.00 | 0.09 |
| 20-Oct-14 | 64 | 49 | 80 | 61 | 58 | 66 | 0.00 | 0.09 |
| 21-Oct-14 | 64 | 52 | 80 | 62 | 58 | 66 | 0.00 | 0.09 |
| 22-Oct-14 | 61 | 49 | 76 | 61 | 58 | 65 | 0.00 | 0.08 |
| 23-Oct-14 | 58 | 44 | 74 | 60 | 56 | 64 | 0.00 | 0.08 |
| 24-Oct-14 | 60 | 48 | 76 | 60 | 57 | 64 | 0.00 | 0.08 |
| 25-Oct-14 | 60 | 45 | 78 | 59 | 56 | 63 | 0.00 | 0.08 |
| 26-Oct-14 | 66 | 51 | 83 | 60 | 56 | 65 | 0.00 | 0.09 |
| 27-Oct-14 | 69 | 56 | 86 | 62 | 58 | 66 | 0.00 | 0.09 |
| 28-Oct-14 | 69 | 55 | 83 | 62 | 59 | 66 | 0.00 | 0.09 |
| 29-Oct-14 | 70 | 62 | 82 | 63 | 61 | 66 | 0.00 | 0.08 |
| 30-Oct-14 | 62 | 46 | 72 | 63 | 59 | 66 | 0.00 | 0.07 |
| 31-Oct-14 | 57 | 42 | 72 | 59 | 56 | 63 | 0.07 | 0.07 |
| High | | | 89 | | | 75 | | |
| Low | | 42 | | | 56 | | | |
| Average | 67 | 54 | 81 | 64 | 61 | 68 | | |
| Days over 95 ^o | | | 0 | Total for Month | | | 2.03 | 2.85 |
| Days below 32 ^o | | | 0 | Number of Rain Days | | | 5.00 | |
| | | | | 59 year Average | | | 2.79 | |
| | | | | Deviation from Average | | | -0.76 | |
| | | | | Net Gain/loss (Rain - ET) | | | | -0.82 |

| | |
|------------------------|-----------|
| Year Cumulative | |
| Rain | ET |
| 50.7 | 33.8 |
| 109.0 | |
| 46.8 | |
| 3.9 | |
| | 16.8 |

November Daily Weather Data

| Date | Temperature | | | | | | Precipitation | | | |
|----------------------------|---------------|-----------|-----------|----------------------------------|-----------|-----------|---------------|-------------|-------|------|
| | Air Temp 6 ft | | | Soil Temp 4 inch | | | Rain | Evapo Trans | | |
| | Avg | Min | Max | Avg | Min | Max | Inches | Inches | | |
| 1-Nov-14 | 47 | 39 | 56 | 55 | 51 | 58 | 0.00 | 0.06 | | |
| 2-Nov-14 | 48 | 34 | 64 | 53 | 49 | 58 | 0.00 | 0.06 | | |
| 3-Nov-14 | 49 | 33 | 68 | 53 | 48 | 58 | 0.00 | 0.06 | | |
| 4-Nov-14 | 56 | 37 | 75 | 54 | 49 | 59 | 0.00 | 0.07 | | |
| 5-Nov-14 | 65 | 51 | 79 | 57 | 53 | 61 | 0.00 | 0.07 | | |
| 6-Nov-14 | 66 | 56 | 79 | 59 | 56 | 61 | 0.03 | 0.07 | | |
| 7-Nov-14 | 53 | 42 | 64 | 56 | 53 | 59 | 0.00 | 0.06 | | |
| 8-Nov-14 | 50 | 41 | 61 | 53 | 51 | 55 | 0.00 | 0.05 | | |
| 9-Nov-14 | 53 | 41 | 69 | 53 | 50 | 56 | 0.00 | 0.06 | | |
| 10-Nov-14 | 54 | 38 | 74 | 52 | 48 | 58 | 0.00 | 0.06 | | |
| 11-Nov-14 | 55 | 38 | 72 | 52 | 48 | 56 | 0.00 | 0.06 | | |
| 12-Nov-14 | 63 | 48 | 77 | 54 | 50 | 58 | 0.00 | 0.07 | | |
| 13-Nov-14 | 50 | 40 | 59 | 53 | 49 | 55 | 0.00 | 0.05 | | |
| 14-Nov-14 | 42 | 33 | 53 | 49 | 47 | 53 | 0.00 | 0.05 | | |
| 15-Nov-14 | 44 | 30 | 60 | 48 | 44 | 52 | 0.00 | 0.05 | | |
| 16-Nov-14 | 57 | 38 | 68 | 50 | 46 | 53 | 0.00 | 0.06 | | |
| 17-Nov-14 | 57 | 39 | 74 | 53 | 47 | 55 | 2.10 | 0.08 | | |
| 18-Nov-14 | 36 | 27 | 45 | 44 | 41 | 47 | 0.00 | 0.04 | | |
| 19-Nov-14 | 36 | 22 | 53 | 41 | 37 | 45 | 0.00 | 0.04 | | |
| 20-Nov-14 | 45 | 28 | 64 | 42 | 37 | 47 | 0.00 | 0.05 | | |
| 21-Nov-14 | 52 | 36 | 68 | 44 | 40 | 48 | 0.00 | 0.05 | | |
| 22-Nov-14 | 56 | 45 | 65 | 45 | 42 | 48 | 0.84 | 0.05 | | |
| 23-Nov-14 | 65 | 60 | 76 | 50 | 48 | 53 | 1.12 | 0.06 | | |
| 24-Nov-14 | 67 | 61 | 76 | 54 | 52 | 57 | 0.75 | 0.06 | | |
| 25-Nov-14 | 52 | 46 | 62 | 51 | 48 | 54 | 1.03 | 0.05 | | |
| 26-Nov-14 | 50 | 43 | 61 | 47 | 45 | 50 | 0.06 | 0.05 | | |
| 27-Nov-14 | 50 | 41 | 58 | 45 | 43 | 48 | 0.00 | 0.04 | | |
| 28-Nov-14 | 42 | 34 | 54 | 43 | 40 | 47 | 0.00 | 0.04 | | |
| 29-Nov-14 | 48 | 33 | 66 | 43 | 39 | 48 | 0.00 | 0.05 | | |
| 30-Nov-14 | 54 | 38 | 74 | 45 | 41 | 50 | 0.00 | 0.05 | | |
| | | | | | | | | | | |
| High | | | 79 | | | 61 | | | | |
| Low | | 22 | | | 37 | | | | | |
| Average | 52 | 40 | 66 | 50 | 46 | 54 | | | | |
| Days over 95 ^o | 0 | | | Total for Month | | | 5.93 | 1.67 | 56.6 | 35.5 |
| | | | | Number of Rain Days | | | 7.00 | | 116.0 | |
| | | | | 59 year Average | | | 3.34 | | 50.1 | |
| | | | | Deviation from Average | | | 2.59 | | 6.5 | |
| Days below 32 ^o | 4 | | | Net Gain/loss (Rain - ET) | | | 4.26 | | 21.1 | |

| | |
|------------------------|-----------|
| Year Cumulative | |
| Rain | ET |
| 56.6 | 35.5 |
| 116.0 | |
| 50.1 | |
| 6.5 | |
| | 21.1 |

December Daily Weather Data

| Temperature | | | | | | | Precipitation | | |
|---|---------------|-----------|-----------|------------------|-----------|-----------|-------------------------------|-------------|------|
| Date | Air Temp 6 ft | | | Soil Temp 4 inch | | | Rain | Evapo Trans | |
| | Avg | Min | Max | Avg | Min | Max | Inches | Inches | |
| 1-Dec-14 | 58 | 44 | 76 | 47 | 43 | 52 | 0.00 | 0.05 | |
| 2-Dec-14 | 63 | 51 | 77 | 50 | 46 | 55 | 0.01 | 0.06 | |
| 3-Dec-14 | 64 | 51 | 78 | 52 | 48 | 56 | 0.00 | 0.06 | |
| 4-Dec-14 | 64 | 54 | 78 | 53 | 50 | 57 | 0.00 | 0.06 | |
| 5-Dec-14 | 62 | 52 | 74 | 53 | 49 | 56 | 0.00 | 0.06 | |
| 6-Dec-14 | 65 | 60 | 76 | 54 | 53 | 57 | 0.00 | 0.06 | |
| 7-Dec-14 | 56 | 48 | 65 | 52 | 50 | 55 | 0.00 | 0.05 | |
| 8-Dec-14 | 49 | 40 | 54 | 50 | 47 | 51 | 0.00 | 0.04 | |
| 9-Dec-14 | 46 | 35 | 60 | 47 | 44 | 49 | 0.00 | 0.04 | |
| 10-Dec-14 | 44 | 36 | 55 | 45 | 42 | 48 | 0.00 | 0.03 | |
| 11-Dec-14 | 44 | 34 | 57 | 44 | 41 | 47 | 0.00 | 0.04 | |
| 12-Dec-14 | 45 | 30 | 64 | 43 | 40 | 47 | 0.00 | 0.04 | |
| 13-Dec-14 | 46 | 32 | 65 | 43 | 40 | 47 | 0.00 | 0.04 | |
| 14-Dec-14 | 45 | 32 | 65 | 43 | 39 | 47 | 0.00 | 0.04 | |
| 15-Dec-14 | 51 | 32 | 71 | 43 | 39 | 47 | 0.00 | 0.04 | |
| 16-Dec-14 | 60 | 47 | 72 | 46 | 44 | 50 | 0.02 | 0.05 | |
| 17-Dec-14 | 48 | 35 | 61 | 45 | 42 | 48 | 0.00 | 0.04 | |
| 18-Dec-14 | 49 | 40 | 65 | 45 | 42 | 48 | 0.00 | 0.04 | |
| 19-Dec-14 | 52 | 44 | 60 | 45 | 43 | 47 | 0.07 | 0.04 | |
| 20-Dec-14 | 52 | 48 | 55 | 46 | 45 | 47 | 0.07 | 0.04 | |
| 21-Dec-14 | 53 | 52 | 54 | 46 | 46 | 47 | 0.08 | 0.04 | |
| 22-Dec-14 | 55 | 51 | 60 | 47 | 46 | 48 | 0.50 | 0.04 | |
| 23-Dec-14 | 64 | 60 | 72 | 49 | 48 | 51 | 1.48 | 0.05 | |
| 24-Dec-14 | 64 | 52 | 74 | 53 | 50 | 55 | 1.84 | 0.06 | |
| 25-Dec-14 | 48 | 39 | 57 | 48 | 45 | 51 | 0.00 | 0.04 | |
| 26-Dec-14 | 48 | 37 | 63 | 45 | 42 | 49 | 0.00 | 0.04 | |
| 27-Dec-14 | 56 | 44 | 69 | 46 | 43 | 50 | 0.00 | 0.05 | |
| 28-Dec-14 | 66 | 56 | 76 | 50 | 47 | 53 | 0.00 | 0.06 | |
| 29-Dec-14 | 62 | 55 | 68 | 52 | 51 | 53 | 1.25 | 0.05 | |
| 30-Dec-14 | 55 | 47 | 60 | 50 | 48 | 51 | 0.00 | 0.04 | |
| 31-Dec-14 | 49 | 45 | 56 | 47 | 46 | 50 | 0.00 | 0.04 | |
| High | | | 78 | | | 57 | | | |
| Low | | 30 | | | 39 | | | | |
| Average | 54 | 45 | 66 | 48 | 45 | 51 | | | |
| Days over 95 ^o | | | | | | | Total for Month | 5.32 | 1.43 |
| | | | | | | | Number of Rain Days | 9.00 | |
| Days below 32 ^o | | | | | | | 59 year Average | 4.08 | |
| | | | | | | | Deviation from Average | 1.24 | |
| Total days in 2014 | | | | | | | | | |
| <32^o or >95^o | | | | | | | 24 | 4 | |
| Net Gain/loss (Rain - ET) | | | | | | | | 3.89 | |

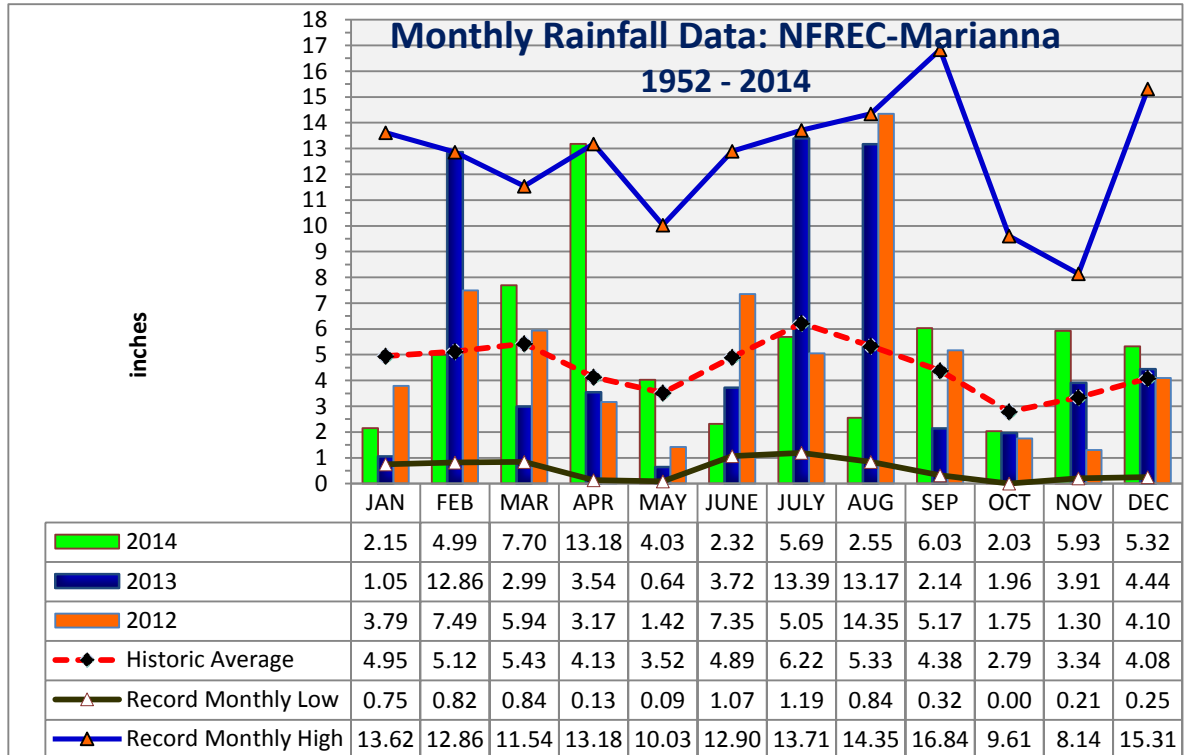
| | |
|------------------------|-----------|
| Year Cumulative | |
| Rain | ET |
| 61.9 | 36.9 |
| 125.0 | |
| 54.2 | |
| 7.7 | |
| | 25.0 |

Jackson County
Monthly Total Rainfall, 1952 - 2012
No FL Research & Education Cntr, Marianna, FL



| YEAR | JAN | FEB | MAR | APR | MAY | JUNE | JULY | AUG | SEP | OCT | NOV | DEC | TOTAL |
|------|--------------|-------|--------------|-------------|--------------|--------------|--------------|-------------|--------------|-------------|-------------|--------------|--------------|
| 1952 | 1.14 | 8.88 | 4.48 | 2.11 | 5.13 | 1.12 | 5.95 | 8.81 | 3.09 | 0.65 | 3.26 | 3.42 | 48.04 |
| 1953 | 4.84 | 7.26 | 3.03 | 8.43 | 2.43 | 3.97 | 6.84 | 1.63 | 6.33 | 0.65 | 4.09 | <u>15.31</u> | 64.81 |
| 1954 | 1.33 | 3.49 | 2.62 | 2.58 | 1.96 | 3.46 | 3.28 | 2.84 | 1.72 | 1.30 | 2.66 | 1.44 | 28.68 |
| 1955 | 3.66 | 1.83 | 0.84 | 5.80 | 3.03 | 1.62 | 6.75 | 3.75 | 2.44 | 2.10 | 0.72 | 0.77 | 33.31 |
| 1956 | 3.59 | 5.18 | 3.77 | 2.04 | 4.03 | 5.45 | 8.52 | 4.09 | 6.44 | 5.08 | 0.28 | 3.34 | 51.81 |
| 1957 | 0.75 | 2.65 | 5.17 | 5.74 | 4.60 | 5.75 | 9.83 | 5.91 | <u>16.84</u> | 1.31 | 6.24 | 2.22 | 67.01 |
| 1958 | 4.48 | 3.61 | 4.73 | 7.22 | 5.57 | 6.00 | 8.39 | 3.45 | 3.68 | 1.88 | 1.75 | 2.32 | 53.08 |
| 1959 | 3.67 | 7.06 | 8.50 | 5.73 | 6.95 | 3.77 | 4.83 | 3.67 | 3.07 | 7.93 | 0.21 | 1.53 | 56.92 |
| 1960 | 3.36 | 7.08 | 3.41 | 6.80 | 3.20 | 4.75 | 4.97 | 4.80 | 6.22 | 2.00 | 0.47 | 2.35 | 49.41 |
| 1961 | 4.23 | 4.15 | 3.64 | 5.57 | 3.97 | 4.41 | 3.99 | 11.09 | 2.60 | 0.00 | 2.84 | 6.23 | 52.72 |
| 1962 | 1.72 | 2.80 | 8.13 | 3.28 | 2.86 | 3.67 | 7.97 | 6.07 | 3.07 | 2.82 | 5.16 | 1.67 | 49.22 |
| 1963 | 7.31 | 3.02 | 3.18 | 1.36 | 3.50 | 7.99 | 5.16 | <i>1.50</i> | 5.25 | 0.01 | 4.22 | 6.05 | 48.55 |
| 1964 | 10.80 | 6.81 | 6.41 | 9.47 | 2.23 | 5.68 | 9.22 | 3.07 | 7.47 | <u>9.61</u> | 3.35 | 6.44 | <u>80.56</u> |
| 1965 | 2.63 | 6.09 | 5.51 | 3.96 | 0.18 | 9.60 | 3.26 | 4.18 | 4.48 | 3.41 | 1.81 | 3.60 | 48.71 |
| 1966 | 5.56 | 9.84 | 2.57 | 0.77 | 5.80 | 3.13 | 3.25 | 9.82 | 5.09 | 1.41 | 2.03 | 4.62 | 53.89 |
| 1967 | 8.27 | 3.32 | 2.19 | 0.13 | 2.61 | 7.02 | 6.49 | 3.58 | 1.40 | 1.86 | 2.40 | 7.98 | 47.25 |
| 1968 | 1.28 | 2.30 | 3.40 | 2.50 | 3.39 | 1.18 | 5.45 | 4.61 | 2.99 | 1.41 | 5.11 | 5.34 | 38.96 |
| 1969 | 1.68 | 3.49 | 7.08 | 4.54 | 3.01 | 1.71 | 13.18 | 3.05 | 5.64 | 1.50 | 1.22 | 3.80 | 49.90 |
| 1970 | 4.16 | 9.20 | 8.86 | 1.83 | 1.81 | 3.69 | 5.04 | 8.01 | 0.49 | 4.40 | 2.21 | 3.13 | 52.83 |
| 1971 | 1.97 | 6.11 | 7.15 | 3.17 | 3.03 | 3.85 | 5.20 | 6.76 | 2.47 | 1.84 | 1.94 | 3.70 | 47.19 |
| 1972 | 3.62 | 6.03 | 6.41 | 0.38 | 2.87 | 8.89 | 3.78 | 5.39 | 2.14 | 2.44 | 3.29 | 3.77 | 49.01 |
| 1973 | 8.14 | 7.71 | 8.38 | 7.60 | 6.87 | 3.63 | 11.12 | 4.51 | 5.40 | 0.27 | 3.64 | 5.33 | 72.60 |
| 1974 | 5.24 | 5.80 | 2.66 | 3.40 | 3.78 | 1.56 | 3.29 | 8.01 | 4.68 | 0.84 | 2.14 | 2.89 | 44.29 |
| 1975 | 10.21 | 6.36 | 4.91 | 10.35 | 3.97 | 4.10 | <u>13.71</u> | 5.40 | 3.81 | 4.35 | 2.89 | 3.28 | 73.34 |
| 1976 | 6.99 | 1.50 | 4.89 | 1.87 | 8.89 | 3.08 | 3.03 | 3.47 | 5.47 | 6.18 | 5.72 | 3.97 | 55.06 |
| 1977 | 3.47 | 1.81 | 6.52 | 0.88 | 0.60 | 6.36 | 3.55 | 5.22 | 9.83 | 2.59 | <u>8.14</u> | 4.19 | 53.16 |
| 1978 | 7.28 | 3.28 | 7.25 | 4.65 | 6.73 | 3.79 | 7.25 | 4.90 | 0.98 | 0.20 | 6.01 | 3.65 | 55.97 |
| 1979 | 7.30 | 7.78 | 3.26 | 7.75 | 6.22 | 1.31 | 7.49 | 6.30 | 11.51 | 0.53 | 4.47 | 2.84 | 66.76 |
| 1980 | 6.58 | 2.96 | <u>11.54</u> | 9.29 | 4.50 | 3.50 | 5.87 | 2.53 | 4.56 | 4.71 | 1.52 | 0.25 | 57.81 |
| 1981 | 1.70 | 5.32 | 5.94 | 3.03 | 2.73 | 4.74 | 4.02 | 2.53 | 2.44 | 1.75 | 0.85 | 4.94 | 39.99 |
| 1982 | 4.17 | 5.61 | 2.91 | 5.93 | 5.39 | 3.00 | 7.51 | 4.42 | 6.00 | 2.65 | 2.34 | 9.14 | 59.07 |
| 1983 | 4.92 | 6.84 | 8.53 | 7.88 | 2.27 | 5.66 | 1.19 | 2.53 | 8.97 | 3.52 | 5.90 | 7.65 | 65.86 |
| 1984 | 5.49 | 5.01 | 8.62 | 6.29 | 2.50 | 5.31 | 12.01 | 5.76 | 0.32 | 1.60 | 1.63 | 0.80 | 55.34 |
| 1985 | 4.60 | 4.46 | 2.60 | 1.18 | 4.44 | 5.68 | 3.68 | 5.58 | 1.42 | 7.42 | 7.91 | 5.34 | 54.31 |
| 1986 | 5.68 | 10.27 | 3.21 | 0.83 | 2.26 | 1.85 | 2.75 | 4.12 | 2.35 | 2.22 | 4.40 | 5.68 | 45.62 |
| 1987 | 8.62 | 5.52 | 7.23 | 0.40 | 4.46 | 5.43 | 5.51 | 4.18 | 2.27 | 0.06 | 4.02 | 0.81 | 48.51 |
| 1988 | 5.57 | 6.40 | 8.41 | 2.69 | 0.28 | 1.07 | 5.43 | 3.98 | 5.53 | 1.98 | 3.28 | 1.23 | 45.85 |
| 1989 | 1.59 | 2.74 | 4.96 | 3.63 | 7.01 | <u>12.90</u> | 11.19 | 3.06 | 3.36 | 7.20 | 4.71 | 5.45 | 67.80 |
| 1990 | 5.26 | 4.57 | 4.55 | 3.00 | 3.22 | 4.02 | 3.65 | 2.91 | 0.85 | 1.34 | 0.93 | 3.42 | 37.72 |
| 1991 | <u>13.62</u> | 3.44 | 9.00 | 5.32 | <u>10.03</u> | 5.30 | 10.67 | 3.89 | 1.53 | 1.17 | 1.60 | 3.00 | 68.57 |
| 1992 | 8.37 | 6.29 | 7.92 | 2.50 | 1.41 | 11.16 | 8.69 | 6.72 | 3.19 | 2.08 | 7.40 | 2.93 | 68.66 |
| 1993 | 12.00 | 3.38 | 7.41 | 1.50 | 1.60 | 4.18 | 6.68 | 3.89 | 3.44 | 2.90 | 2.27 | 3.63 | 52.88 |
| 1994 | 8.64 | 2.53 | 6.25 | 4.34 | 1.82 | 11.41 | 10.95 | 9.08 | 6.44 | 7.62 | 2.53 | 3.79 | 75.40 |
| 1995 | 5.23 | 3.13 | 4.29 | 4.35 | 3.90 | 5.56 | 3.02 | 6.16 | 0.86 | 7.51 | 4.12 | 1.78 | 49.91 |

| YEAR | JAN | FEB | MAR | APR | MAY | JUNE | JULY | AUG | SEP | OCT | NOV | DEC | TOTAL |
|--|-------------|-------------|-------------|--------------|-------------|-------------|-------------|-------------|-------------|-------------|-------------|-------------|--------------|
| 1996 | 3.64 | 5.99 | 8.47 | 5.76 | 1.50 | 5.43 | 2.83 | 14.28 | 5.32 | 3.81 | 2.01 | 3.65 | 62.69 |
| 1997 | 6.68 | 5.29 | 2.63 | 10.08 | 5.91 | 6.41 | 5.73 | 4.65 | 3.78 | 2.10 | 6.85 | 8.44 | 68.55 |
| 1998 | 6.28 | 8.30 | 6.11 | 2.24 | 1.45 | 2.35 | 4.37 | 2.20 | 16.31 | 0.30 | 2.05 | 1.98 | 53.94 |
| 1999 | 6.95 | 2.90 | 3.61 | 1.50 | 6.71 | 8.99 | 8.64 | 4.02 | 4.33 | 3.13 | 3.56 | 2.50 | 56.84 |
| 2000 | 3.78 | 4.96 | 4.48 | 4.05 | 0.09 | 4.00 | 3.40 | 7.15 | 7.20 | 0.71 | 4.43 | 3.21 | 47.46 |
| 2001 | 2.16 | 0.82 | 10.00 | 1.99 | 2.52 | 8.24 | 4.66 | 8.21 | 1.90 | 1.51 | 1.70 | 0.78 | 44.49 |
| 2002 | 3.82 | 2.44 | 5.51 | 5.78 | 2.19 | 3.45 | 10.34 | 3.30 | 11.83 | 7.36 | 7.76 | 5.99 | 69.77 |
| 2003 | 2.30 | 7.03 | 8.18 | 4.89 | 3.11 | 6.11 | 7.84 | 5.99 | 2.39 | 3.58 | 3.04 | 3.12 | 57.58 |
| 2004 | 3.19 | 7.66 | 0.90 | 4.37 | 1.19 | 6.66 | 4.92 | 1.67 | 10.01 | 3.89 | 4.97 | 3.25 | 52.68 |
| 2005 | 3.33 | 2.31 | 9.05 | 7.04 | 1.67 | 7.47 | 9.44 | 11.71 | 1.62 | 0.03 | 3.15 | 4.81 | 61.63 |
| 2006 | 4.82 | 3.90 | 0.91 | 1.61 | 4.97 | 1.99 | 2.22 | 5.18 | 0.91 | 3.09 | 3.41 | 5.43 | 38.44 |
| 2007 | 5.99 | 2.45 | 1.10 | 0.99 | 1.57 | 3.97 | 3.94 | 4.18 | 1.27 | 4.79 | 1.89 | 4.03 | 36.17 |
| 2008 | 4.26 | 9.00 | 9.11 | 4.28 | 1.46 | 8.64 | 4.02 | 9.29 | 0.74 | 5.11 | 3.18 | 8.23 | 67.32 |
| 2009 | 2.33 | 3.26 | 7.11 | 7.73 | 9.17 | 2.78 | 3.88 | 3.19 | 5.22 | 3.39 | 2.35 | 9.57 | 59.98 |
| 2010 | 7.53 | 3.99 | 3.41 | 4.01 | 5.09 | 2.92 | 2.31 | 0.84 | 1.33 | 0.22 | 5.82 | 0.63 | 38.10 |
| 2011 | 4.33 | 4.04 | 5.00 | 0.92 | 0.78 | 1.66 | 5.11 | 1.87 | 2.26 | 1.84 | 1.94 | 3.75 | 33.50 |
| 2012 | 3.79 | 7.49 | 5.94 | 3.17 | 1.42 | 7.35 | 5.05 | 14.35 | 5.17 | 1.75 | 1.30 | 4.10 | 60.88 |
| 2013 | 1.05 | 12.86 | 2.99 | 3.54 | 0.64 | 3.72 | 13.39 | 13.17 | 2.14 | 1.96 | 3.91 | 4.44 | 63.81 |
| 2014 | 2.15 | 4.99 | 7.70 | 13.18 | 4.03 | 2.32 | 5.69 | 2.55 | 6.03 | 2.03 | 5.93 | 5.32 | 61.92 |
| Deviation from the Average Monthly Rainfall | | | | | | | | | | | | | |
| Inches | -2.80 | -0.13 | 2.27 | 9.05 | 0.51 | -2.57 | -0.53 | -2.78 | 1.65 | -0.76 | 2.59 | 1.24 | 7.72 |
| Monthly Average Rainfall, 1952-2013 | | | | | | | | | | | | | |
| AVG. | 4.95 | 5.12 | 5.43 | 4.13 | 3.52 | 4.89 | 6.22 | 5.33 | 4.38 | 2.79 | 3.34 | 4.08 | 54.20 |
| % of Annual Rainfall Occuring each Month | | | | | | | | | | | | | |
| | 9.1% | 9.5% | 10.0% | 7.6% | 6.5% | 9.0% | 11.5% | 9.8% | 8.1% | 5.1% | 6.2% | 7.5% | |
| Record High/Low for the Month | | | | | | | | | | | | | |
| LOW | 0.75 | 0.82 | 0.84 | 0.13 | 0.09 | 1.07 | 1.19 | 0.84 | 0.32 | 0.00 | 0.21 | 0.25 | 28.68 |
| HIGH | 13.62 | 12.86 | 11.54 | 13.18 | 10.03 | 12.90 | 13.71 | 14.35 | 16.84 | 9.61 | 8.14 | 15.31 | 80.56 |

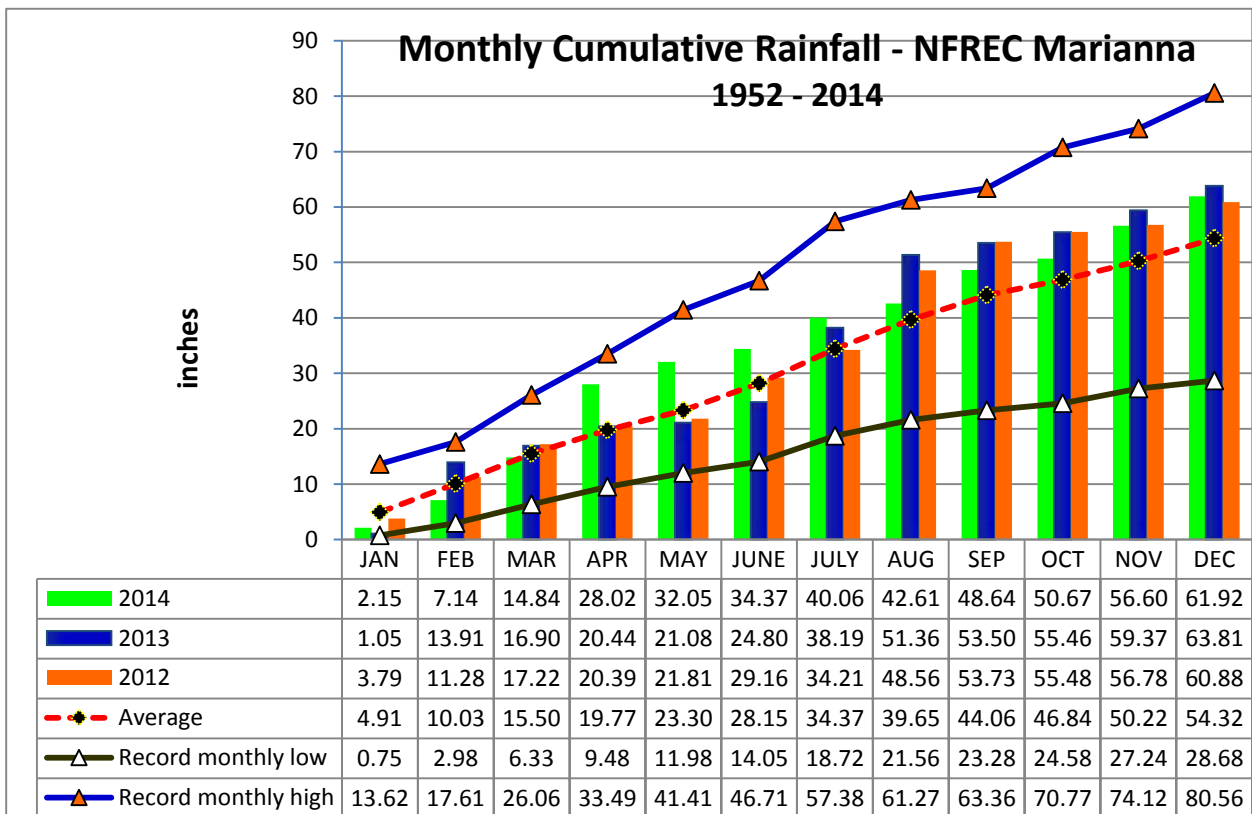


Jackson County
Monthly Cumulative Rainfall, 1952 -2012
North Florida Research & Education Center Marianna, FL



| YEAR | JAN | FEB | MAR | APR | MAY | JUNE | JULY | AUG | SEP | OCT | NOV | DEC |
|------|--------------|--------------|--------------|--------------|--------------|--------------|--------------|--------------|--------------|--------------|--------------|--------------|
| 1952 | 1.14 | 10.02 | 14.50 | 16.61 | 21.74 | 22.86 | 28.81 | 37.62 | 40.71 | 41.36 | 44.62 | 48.04 |
| 1953 | 4.84 | 12.10 | 15.13 | 23.56 | 25.99 | 29.96 | 36.80 | 38.43 | 44.76 | 45.41 | 49.50 | 64.81 |
| 1954 | 1.33 | 4.82 | 7.44 | 10.02 | 11.98 | 15.44 | 18.72 | 21.56 | 23.28 | 24.58 | 27.24 | 28.68 |
| 1955 | 3.66 | 5.49 | 6.33 | 12.13 | 15.16 | 16.78 | 23.53 | 27.28 | 29.72 | 31.82 | 32.54 | 33.31 |
| 1956 | 3.59 | 8.77 | 12.54 | 14.58 | 18.61 | 24.06 | 32.58 | 36.67 | 43.11 | 48.19 | 48.47 | 51.81 |
| 1957 | 0.75 | 3.40 | 8.57 | 14.31 | 18.91 | 24.66 | 34.49 | 40.40 | 57.24 | 58.55 | 64.79 | 67.01 |
| 1958 | 4.48 | 8.09 | 12.82 | 20.04 | 25.61 | 31.61 | 40.00 | 43.45 | 47.13 | 49.01 | 50.76 | 53.08 |
| 1959 | 3.67 | 10.73 | 19.23 | 24.96 | 31.91 | 35.68 | 40.51 | 44.18 | 47.25 | 55.18 | 55.39 | 56.92 |
| 1960 | 3.36 | 10.44 | 13.85 | 20.65 | 23.85 | 28.60 | 33.57 | 38.37 | 44.59 | 46.59 | 47.06 | 49.41 |
| 1961 | 4.23 | 8.38 | 12.02 | 17.59 | 21.56 | 25.97 | 29.96 | 41.05 | 43.65 | 43.65 | 46.49 | 52.72 |
| 1962 | 1.72 | 4.52 | 12.65 | 15.93 | 18.79 | 22.46 | 30.43 | 36.50 | 39.57 | 42.39 | 47.55 | 49.22 |
| 1963 | 7.31 | 10.33 | 13.51 | 14.87 | 18.37 | 26.36 | 31.52 | 33.02 | 38.27 | 38.28 | 42.50 | 48.55 |
| 1964 | 10.80 | <u>17.61</u> | 24.02 | <u>33.49</u> | 35.72 | 41.40 | 50.62 | 53.69 | 61.16 | <u>70.77</u> | <u>74.12</u> | <u>80.56</u> |
| 1965 | 2.63 | 8.72 | 14.23 | 18.19 | 18.37 | 27.97 | 31.23 | 35.41 | 39.89 | 43.30 | 45.11 | 48.71 |
| 1966 | 5.56 | 15.40 | 17.97 | 18.74 | 24.54 | 27.67 | 30.92 | 40.74 | 45.83 | 47.24 | 49.27 | 53.89 |
| 1967 | 8.27 | 11.59 | 13.78 | 13.91 | 16.52 | 23.54 | 30.03 | 33.61 | 35.01 | 36.87 | 39.27 | 47.25 |
| 1968 | 1.28 | 3.58 | 6.98 | 9.48 | 12.87 | 14.05 | 19.50 | 24.11 | 27.10 | 28.51 | 33.62 | 38.96 |
| 1969 | 1.68 | 5.17 | 12.25 | 16.79 | 19.80 | 21.51 | 34.69 | 37.74 | 43.38 | 44.88 | 46.10 | 49.90 |
| 1970 | 4.16 | 13.36 | 22.22 | 24.05 | 25.86 | 29.55 | 34.59 | 42.60 | 43.09 | 47.49 | 49.70 | 52.83 |
| 1971 | 1.97 | 8.08 | 15.23 | 18.40 | 21.43 | 25.28 | 30.48 | 37.24 | 39.71 | 41.55 | 43.49 | 47.19 |
| 1972 | 3.62 | 9.65 | 16.06 | 16.44 | 19.31 | 28.20 | 31.98 | 37.37 | 39.51 | 41.95 | 45.24 | 49.01 |
| 1973 | 8.14 | 15.85 | 24.23 | 31.83 | 38.70 | 42.33 | 53.45 | 57.96 | <u>63.36</u> | 63.63 | 67.27 | 72.60 |
| 1974 | 5.24 | 11.04 | 13.70 | 17.10 | 20.88 | 22.44 | 25.73 | 33.74 | 38.42 | 39.26 | 41.40 | 44.29 |
| 1975 | 10.21 | 16.57 | 21.48 | 31.83 | 35.80 | 39.90 | 53.61 | 59.01 | 62.82 | 67.17 | 70.06 | 73.34 |
| 1976 | 6.99 | 8.49 | 13.38 | 15.25 | 24.14 | 27.22 | 30.25 | 33.72 | 39.19 | 45.37 | 51.09 | 55.06 |
| 1977 | 3.47 | 5.28 | 11.80 | 12.68 | 13.28 | 19.64 | 23.19 | 28.41 | 38.24 | 40.83 | 48.97 | 53.16 |
| 1978 | 7.28 | 10.56 | 17.81 | 22.46 | 29.19 | 32.98 | 40.23 | 45.13 | 46.11 | 46.31 | 52.32 | 55.97 |
| 1979 | 7.30 | 15.08 | 18.34 | 26.09 | 32.31 | 33.62 | 41.11 | 47.41 | 58.92 | 59.45 | 63.92 | 66.76 |
| 1980 | 6.58 | 9.54 | 21.08 | 30.37 | 34.87 | 38.37 | 44.24 | 46.77 | 51.33 | 56.04 | 57.56 | 57.81 |
| 1981 | 1.70 | 7.02 | 12.96 | 15.99 | 18.72 | 23.46 | 27.48 | 30.01 | 32.45 | 34.20 | 35.05 | 39.99 |
| 1982 | 4.17 | 9.78 | 12.69 | 18.62 | 24.01 | 27.01 | 34.52 | 38.94 | 44.94 | 47.59 | 49.93 | 59.07 |
| 1983 | 4.92 | 11.76 | 20.29 | 28.17 | 30.44 | 36.10 | 37.29 | 39.82 | 48.79 | 52.31 | 58.21 | 65.86 |
| 1984 | 5.49 | 10.50 | 19.12 | 25.41 | 27.91 | 33.22 | 45.23 | 50.99 | 51.31 | 52.91 | 54.54 | 55.34 |
| 1985 | 4.60 | 9.06 | 11.66 | 12.84 | 17.28 | 22.96 | 26.64 | 32.22 | 33.64 | 41.06 | 48.97 | 54.31 |
| 1986 | 5.68 | 15.95 | 19.16 | 19.99 | 22.25 | 24.10 | 26.85 | 30.97 | 33.32 | 35.54 | 39.94 | 45.62 |
| 1987 | 8.62 | 14.14 | 21.37 | 21.77 | 26.23 | 31.66 | 37.17 | 41.35 | 43.62 | 43.68 | 47.70 | 48.51 |
| 1988 | 5.57 | 11.97 | 20.38 | 23.07 | 23.35 | 24.42 | 29.85 | 33.83 | 39.36 | 41.34 | 44.62 | 45.85 |
| 1989 | 1.59 | 4.33 | 9.29 | 12.92 | 19.93 | 32.83 | 44.02 | 47.08 | 50.44 | 57.64 | 62.35 | 67.80 |
| 1990 | 5.26 | 9.83 | 14.38 | 17.38 | 20.60 | 24.62 | 28.27 | 31.18 | 32.03 | 33.37 | 34.30 | 37.72 |
| 1991 | <u>13.62</u> | 17.06 | <u>26.06</u> | 31.38 | <u>41.41</u> | <u>46.71</u> | <u>57.38</u> | <u>61.27</u> | 62.80 | 63.97 | 65.57 | 68.57 |
| 1992 | 8.37 | 14.66 | 22.58 | 25.08 | 26.49 | 37.65 | 46.34 | 53.06 | 56.25 | 58.33 | 65.73 | 68.66 |
| 1993 | 12.00 | 15.38 | 22.79 | 24.29 | 25.89 | 30.07 | 36.75 | 40.64 | 44.08 | 46.98 | 49.25 | 52.88 |
| 1994 | 8.64 | 11.17 | 17.42 | 21.76 | 23.58 | 34.99 | 45.94 | 55.02 | 61.46 | 69.08 | 71.61 | 75.40 |
| 1995 | 5.23 | 8.36 | 12.65 | 17.00 | 20.90 | 26.46 | 29.48 | 35.64 | 36.50 | 44.01 | 48.13 | 49.91 |

| YEAR | JAN | FEB | MAR | APR | MAY | JUNE | JULY | AUG | SEP | OCT | NOV | DEC |
|---|-------|-------|-------|-------|-------|-------|-------|-------|-------|-------|-------|-------|
| 1996 | 3.64 | 9.63 | 18.10 | 23.86 | 25.36 | 30.79 | 33.62 | 47.90 | 53.22 | 57.03 | 59.04 | 62.69 |
| 1997 | 6.68 | 11.97 | 14.60 | 24.68 | 30.59 | 37.00 | 42.73 | 47.38 | 51.16 | 53.26 | 60.11 | 68.55 |
| 1998 | 6.28 | 14.58 | 20.69 | 22.93 | 24.38 | 26.73 | 31.10 | 33.30 | 49.61 | 49.91 | 51.96 | 53.94 |
| 1999 | 6.95 | 9.85 | 13.46 | 14.96 | 21.67 | 30.66 | 39.30 | 43.32 | 47.65 | 50.78 | 54.34 | 56.84 |
| 2000 | 3.78 | 8.74 | 13.22 | 17.27 | 17.36 | 21.36 | 24.76 | 31.91 | 39.11 | 39.82 | 44.25 | 47.46 |
| 2001 | 2.16 | 2.98 | 12.98 | 14.97 | 17.49 | 25.73 | 30.39 | 38.60 | 40.50 | 42.01 | 43.71 | 44.49 |
| 2002 | 3.82 | 6.26 | 11.77 | 17.55 | 19.74 | 23.19 | 33.53 | 36.83 | 48.66 | 56.02 | 63.78 | 69.77 |
| 2003 | 2.30 | 9.33 | 17.51 | 22.40 | 25.51 | 31.62 | 39.46 | 45.45 | 47.84 | 51.42 | 54.46 | 57.58 |
| 2004 | 3.19 | 10.85 | 11.75 | 16.12 | 17.31 | 23.97 | 28.89 | 30.56 | 40.57 | 44.46 | 49.43 | 52.68 |
| 2005 | 3.33 | 5.64 | 14.69 | 21.73 | 23.40 | 30.87 | 40.31 | 52.02 | 53.64 | 53.67 | 56.82 | 61.63 |
| 2006 | 4.82 | 8.72 | 9.63 | 11.24 | 16.21 | 18.20 | 20.42 | 25.60 | 26.51 | 29.60 | 33.01 | 38.44 |
| 2007 | 5.99 | 8.44 | 9.54 | 10.53 | 12.10 | 16.07 | 20.01 | 24.19 | 25.46 | 30.25 | 32.14 | 36.17 |
| 2008 | 4.26 | 13.26 | 22.37 | 26.65 | 28.11 | 36.75 | 40.77 | 50.06 | 50.80 | 55.91 | 59.09 | 67.32 |
| 2009 | 2.33 | 5.59 | 12.70 | 20.43 | 29.60 | 32.38 | 36.26 | 39.45 | 44.67 | 48.06 | 50.41 | 59.98 |
| 2010 | 7.53 | 11.52 | 14.93 | 18.94 | 24.03 | 26.95 | 29.26 | 30.10 | 31.43 | 31.65 | 37.47 | 38.10 |
| 2011 | 4.33 | 8.37 | 13.37 | 14.29 | 15.07 | 16.73 | 21.84 | 23.71 | 25.97 | 27.81 | 29.75 | 33.50 |
| 2012 | 3.79 | 11.28 | 17.22 | 20.39 | 21.81 | 29.16 | 34.21 | 48.56 | 53.73 | 55.48 | 56.78 | 60.88 |
| 2013 | 1.05 | 13.91 | 16.90 | 20.44 | 21.08 | 24.80 | 38.19 | 51.36 | 53.50 | 55.46 | 59.37 | 63.81 |
| 2014 | 2.15 | 7.14 | 14.84 | 28.02 | 32.05 | 34.37 | 40.06 | 42.61 | 48.64 | 50.67 | 56.60 | 61.92 |
| 2014 Deviation from the Average Accumulation | | | | | | | | | | | | |
| Inches | -2.76 | -2.89 | -0.66 | 8.25 | 8.75 | 6.22 | 5.69 | 2.96 | 4.58 | 3.83 | 6.38 | 7.60 |
| Average Accumulation, 1952-2013 | | | | | | | | | | | | |
| Inches | 4.91 | 10.03 | 15.50 | 19.77 | 23.30 | 28.15 | 34.37 | 39.65 | 44.06 | 46.84 | 50.22 | 54.32 |
| Record High/Low Accumulation | | | | | | | | | | | | |
| LOW | 0.75 | 2.98 | 6.33 | 9.48 | 11.98 | 14.05 | 18.72 | 21.56 | 23.28 | 24.58 | 27.24 | 28.68 |
| HIGH | 13.62 | 17.61 | 26.06 | 33.49 | 41.41 | 46.71 | 57.38 | 61.27 | 63.36 | 70.77 | 74.12 | 80.56 |



2014 Panhandle FAWN Weather Station Summary

| FAWN Station | Data | Jan | Feb | Mar | Apr | May | June | July | Aug | Sept | Oct | Nov | Dec | Total |
|-------------------|-----------|------|------|------|------|------|------|------|------|------|------|------|------|-------|
| Monticello | Rain | 4.3 | 4.4 | 4.2 | 11.9 | 3.8 | 2.7 | 6.8 | 2.4 | 5.4 | 3.0 | 5.6 | 8.4 | 62.9 |
| | Hist Avg | 4.5 | 4.6 | 6.1 | 4.1 | 3.4 | 5.7 | 7.0 | 6.9 | 5.4 | 3.6 | 3.1 | 3.7 | 58.1 |
| | Deviation | -0.2 | -0.2 | -1.9 | 7.8 | 0.4 | -3.0 | -0.2 | -4.6 | 0.0 | -0.6 | 2.5 | 4.7 | 4.8 |
| Quincy | Rain | 4.0 | 5.4 | 9.3 | 13.0 | 3.3 | 4.0 | 4.8 | 3.5 | 4.4 | 3.2 | 5.7 | 10.7 | 71.1 |
| | Hist Avg | 5.0 | 4.3 | 5.6 | 3.7 | 4.2 | 5.2 | 6.3 | 6.2 | 4.1 | 3.4 | 3.3 | 3.7 | 55.0 |
| | Deviation | -1.0 | 1.1 | 3.7 | 9.3 | -0.9 | -1.3 | -1.5 | -2.7 | 0.3 | -0.2 | 2.4 | 7.0 | 16.1 |
| Carrabelle | Rain | 6.1 | 6.7 | 6.7 | 7.1 | 2.3 | 7.7 | 3.9 | 5.1 | 7.5 | 2.3 | 4.8 | 2.4 | 62.7 |
| | Hist Avg | 3.8 | 3.7 | 4.9 | 3.0 | 2.7 | 5.3 | 7.3 | 7.9 | 7.3 | 3.7 | 3.2 | 3.0 | 55.8 |
| | Deviation | 2.3 | 3.0 | 1.8 | 4.1 | -0.4 | 2.4 | -3.4 | -2.8 | 0.2 | -1.4 | 1.6 | -0.6 | 6.9 |
| Marianna | Rain | 2.2 | 5.0 | 7.7 | 13.2 | 4.0 | 2.3 | 5.7 | 2.6 | 6.0 | 2.0 | 5.9 | 5.3 | 62.0 |
| | Hist Avg | 5.0 | 5.1 | 5.4 | 4.1 | 3.5 | 4.9 | 6.2 | 5.3 | 4.4 | 2.8 | 3.3 | 4.1 | 54.2 |
| | Deviation | -2.8 | -0.1 | 2.3 | 9.1 | 0.5 | -2.6 | -0.5 | -2.8 | 1.6 | -0.8 | 2.6 | 1.2 | 7.8 |
| DeFuniak | Rain | 3.3 | 5.2 | 7.7 | 19.1 | 8.4 | 5.7 | 9.7 | 2.1 | 4.1 | 5.6 | 2.6 | 9.5 | 82.9 |
| Jay | Rain | 3.4 | 5.1 | 7.6 | 16.7 | 10.3 | 5.3 | 8.7 | 4.9 | 4.1 | 4.1 | 1.9 | 5.8 | 77.8 |
| | Hist Avg | 5.5 | 5.3 | 6.6 | 4.8 | 4.8 | 5.8 | 7.0 | 6.2 | 5.5 | 3.3 | 5.1 | 4.7 | 64.6 |
| | Deviation | -2.1 | -0.2 | 1.0 | 11.9 | 5.5 | -0.5 | 1.7 | -1.3 | -1.4 | 0.8 | -3.2 | 1.1 | 13.2 |
| 6 Station Average | | 3.9 | 5.3 | 7.2 | 13.5 | 5.4 | 4.6 | 6.6 | 3.4 | 5.3 | 3.4 | 4.4 | 7.0 | 69.9 |

FAWN 2014 Jan-Dec Rainfall Totals

