



Jackson County 2021 Weather Data

70 Years of Weather Data Recorded at the UF/IFAS Marianna North Florida Research and Education Center



Doug Mayo
Jackson County Extension Director

1952-2008 Rainfall Data compiled by
Ed Jowers, Emeritus County Extension Director

Data provided by Florida Automated Weather Station (FAWN)
UF/IFAS North Florida Research and Education Center
Greenwood, Florida



<http://fawn.ifas.ufl.edu/>

Tower Name	Tower Number	Latitude Degree, Minutes	Latitude Degrees Minutes, Seconds	Latitude Degrees Decimal	Longitude Degree, Minutes	Longitude Degrees Minutes, Seconds	Longitude Degrees Decimal	Elevation Feet
Marianna	130.00	N 30°51.000'	N 30°50'00.00"	N 30.85000°	-85°09.910'	-85°09'54.60"	-85.16516°	115'

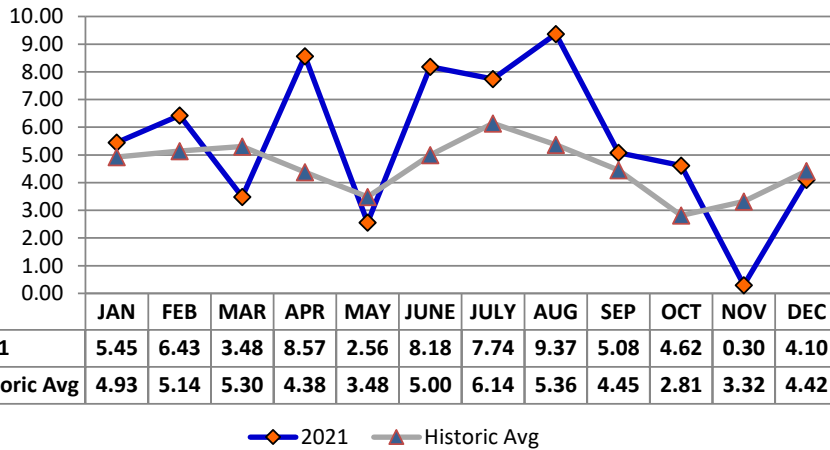
2021 UF/IFAS FAWN Marianna Weather Summary

Month	6' Air Temp			Soil Temp			Rainfall Inches	Dev from Hist Avg
	High	Low	Avg	High	Low	Avg		
January	77	31	53	67	43	55	5.5	0.5
February	83	30	55	73	45	57	6.4	1.3
March	87	37	64	84	52	67	3.5	-1.8
April	89	38	66	87	54	71	8.6	4.2
May	93	51	74	95	64	79	2.6	-0.9
June	94	67	79	94	75	84	8.2	3.2
July	96	70	80	94	77	85	7.7	1.6
August	95	69	80	97	76	85	9.4	4.0
September	91	54	77	92	71	82	5.1	0.6
October	90	47	70	89	60	76	4.6	1.8
November	82	32	56	73	52	62	0.3	-3.0
December	81	35	62	74	47	62	4.1	-0.3
2021	96	30	68	97	43	72	65.9	11.1

Data source: UF/IFAS Florida Automated Weather Network Marianna Station

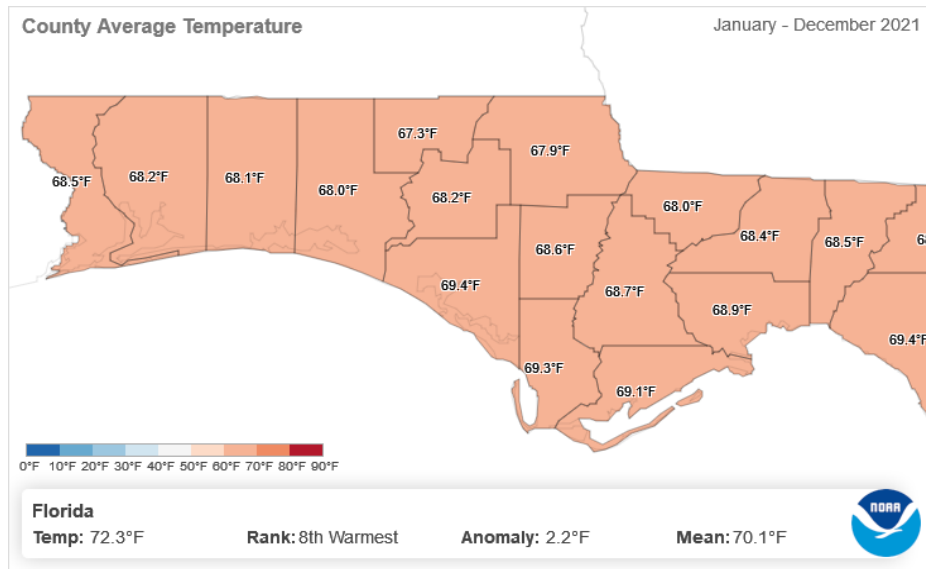
Total days <32^o 5 Total days >95^o 4

Monthly Rainfall @ Marianna FAWN



Annual Average Jackson Co. 6ft Air Temperature by Year

	2021	2020	2019	2018	2017	2016	2015	2014	2013	2012
Marianna FAWN	68	69	70	67	68	68	68	65	67	71
NOAA Avg	67	67	67	67	67	67	67	67	67	67
Deviation	1	2	3	0	1	1	1	-2	0	4
NOAA	67.9	69.3	69.6	68.6	69.2	68.7	69.1	66	67	68.6
NOAA Avg	67	67	67	67	67	67	67	67	67	67
Deviation	0.9	2.3	2.6	1.6	2.2	1.7	2.1	-1	0	1.6



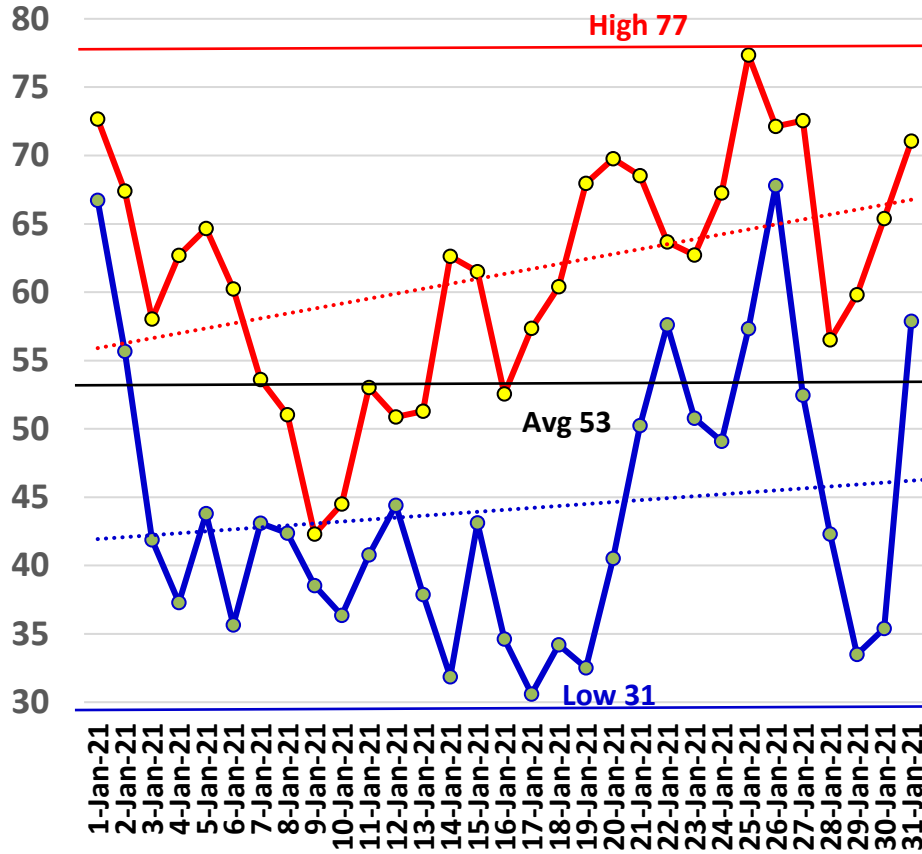
January Daily Weather Data

Temperature							Precipitation				
Date	Air Temp 6 ft			Soil Temp 4 inch			Rain	Evapo Trans			
	Avg	Min	Max	Avg	Min	Max	Inches	Inches			
1-Jan-21	69	67	73	64	62	65	1.00	0.04			
2-Jan-21	62	56	67	63	61	64	0.78	0.05			
3-Jan-21	50	42	58	58	54	60	0.00	0.04			
4-Jan-21	49	37	63	55	51	60	0.00	0.04			
5-Jan-21	52	44	65	54	52	59	0.00	0.04			
6-Jan-21	47	36	60	53	48	57	0.00	0.04			
7-Jan-21	50	43	54	52	50	54	0.43	0.04			
8-Jan-21	47	42	51	51	49	53	0.00	0.04			
9-Jan-21	41	39	42	48	46	49	0.00	0.03			
10-Jan-21	40	36	44	48	46	51	0.00	0.03			
11-Jan-21	47	41	53	49	47	51	0.27	0.04			
12-Jan-21	48	44	51	51	50	52	0.00	0.04			
13-Jan-21	43	38	51	50	48	53	0.00	0.04			
14-Jan-21	47	32	63	50	44	55	0.00	0.04			
15-Jan-21	54	43	62	53	50	57	0.04	0.05			
16-Jan-21	43	35	53	49	45	52	0.00	0.04			
17-Jan-21	44	31	57	48	43	53	0.00	0.04			
18-Jan-21	47	34	60	49	45	54	0.00	0.04			
19-Jan-21	50	33	68	50	44	56	0.00	0.05			
20-Jan-21	54	41	70	53	48	58	0.00	0.06			
21-Jan-21	61	50	69	56	53	58	0.02	0.06			
22-Jan-21	61	58	64	59	58	60	1.20	0.04			
23-Jan-21	56	51	63	58	56	61	0.00	0.05			
24-Jan-21	58	49	67	58	55	62	0.00	0.06			
25-Jan-21	67	57	77	62	58	65	0.00	0.08			
26-Jan-21	70	68	72	65	64	67	1.13	0.04			
27-Jan-21	65	52	73	65	61	67	0.51	0.06			
28-Jan-21	48	42	57	57	53	60	0.00	0.06			
29-Jan-21	45	33	60	54	49	59	0.00	0.05			
30-Jan-21	51	35	65	54	49	59	0.00	0.06			
31-Jan-21	64	58	71	59	55	62	0.07	0.06			
High			77			67					
Low		31			43						
Average	53	44	61	55	51	58					
Days over 95 ^o							Total for Month	5.45	1.45	5.5	1.5
							Number of Rain Days	10		10.0	
Days below 32 ^o							Historic Average	4.93		4.9	
							Deviation from Average	0.52		0.5	
							Net Gain/loss (Rain - ET)	4			4.0

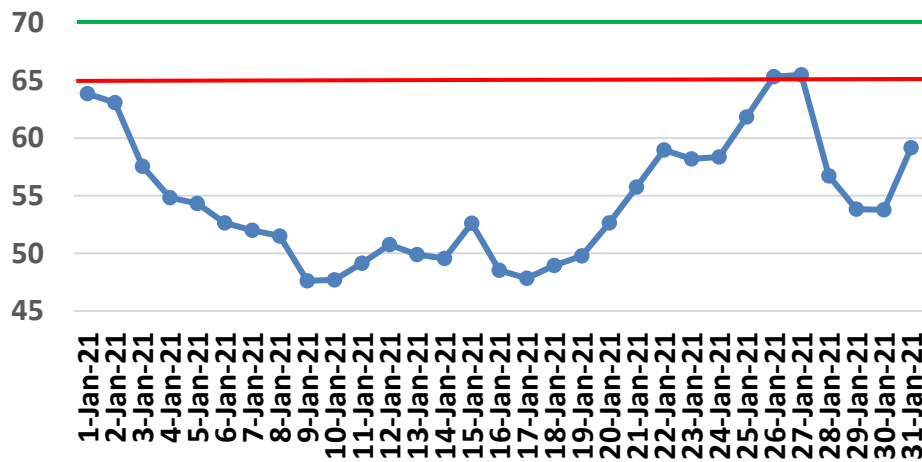
Year Cumulative

Rain	ET
5.5	1.5
10.0	
4.9	
0.5	
	4.0

Jan Marianna FAWN 6' Air Temps



January Avg Soil Temps Marianna

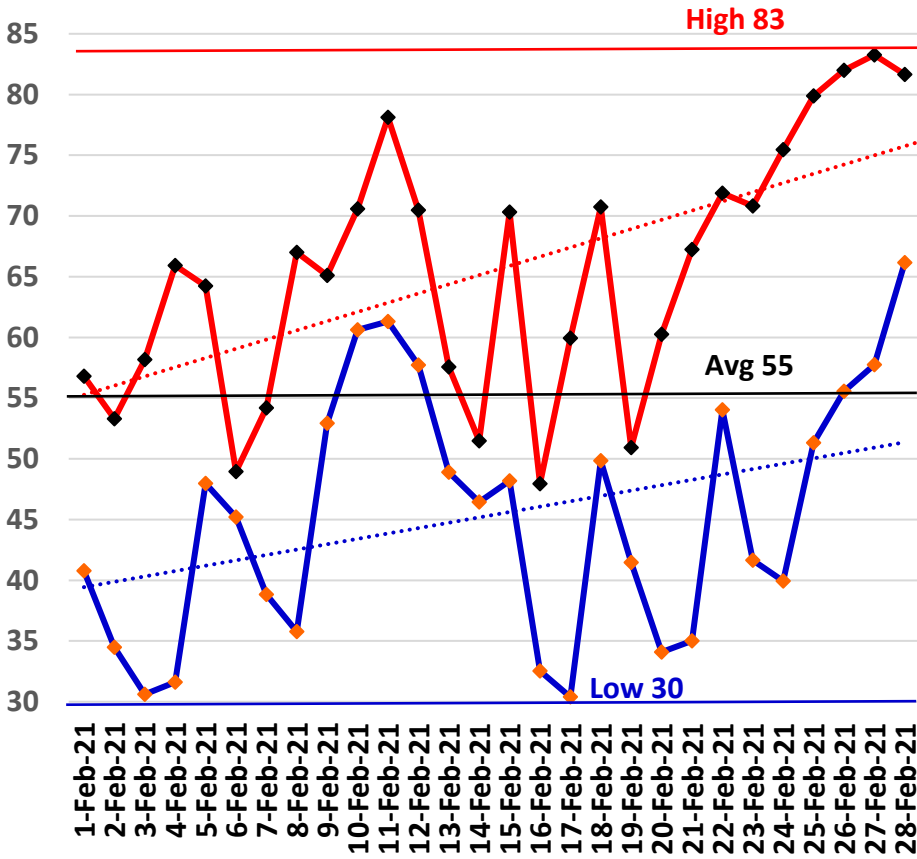


February Daily Weather Data

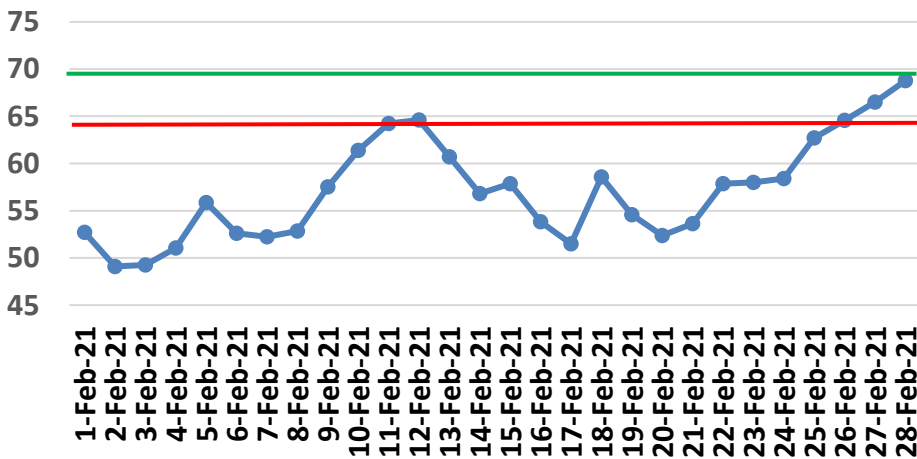
Temperature							Precipitation		
Date	Air Temp 6 ft			Soil Temp 4 inch			Rain	Evapo Trans	
	Avg	Min	Max	Avg	Min	Max	Inches	Inches	
1-Feb-21	45	41	57	53	49	59	0.00	0.05	
2-Feb-21	43	34	53	49	45	53	0.00	0.06	
3-Feb-21	43	31	58	49	45	55	0.00	0.06	
4-Feb-21	51	32	66	51	45	56	0.03	0.07	
5-Feb-21	57	48	64	56	54	58	0.29	0.05	
6-Feb-21	47	45	49	53	52	54	0.30	0.04	
7-Feb-21	47	39	54	52	50	55	0.01	0.05	
8-Feb-21	51	36	67	53	47	59	0.00	0.07	
9-Feb-21	60	53	65	58	55	60	1.49	0.05	
10-Feb-21	65	61	71	61	59	64	0.01	0.06	
11-Feb-21	68	61	78	64	62	68	0.44	0.08	
12-Feb-21	64	58	70	65	63	67	0.89	0.06	
13-Feb-21	53	49	58	61	58	63	0.46	0.05	
14-Feb-21	49	46	51	57	55	58	0.17	0.05	
15-Feb-21	56	48	70	58	55	61	0.76	0.07	
16-Feb-21	38	33	48	54	50	58	0.00	0.06	
17-Feb-21	46	30	60	51	46	56	0.00	0.07	
18-Feb-21	59	50	71	59	55	62	1.36	0.07	
19-Feb-21	47	41	51	55	51	57	0.05	0.06	
20-Feb-21	46	34	60	52	47	59	0.00	0.08	
21-Feb-21	52	35	67	54	48	60	0.00	0.08	
22-Feb-21	61	54	72	58	55	62	0.17	0.08	
23-Feb-21	56	42	71	58	52	64	0.00	0.09	
24-Feb-21	58	40	75	58	52	65	0.00	0.1	
25-Feb-21	65	51	80	63	57	70	0.00	0.1	
26-Feb-21	68	56	82	65	60	70	0.00	0.1	
27-Feb-21	70	58	83	67	63	72	0.00	0.11	
28-Feb-21	73	66	82	69	66	73	0.00	0.11	
High			83			73			
Low		30			45				
Average	55	45	66	57	53	61			
Days over 95 ⁰	0			Total for Month		6.43	1.98	11.9	3.4
				Number of Rain Days		14			
Days below 32 ⁰	3			Historic Average		5.14		10.1	1.8
				Deviation from Average		1.29			
				Net Gain/loss (Rain - ET)			4.45		

Year Cumulative	
Rain	ET
11.9	3.4
24.0	
10.1	
1.8	
	8.5

February Marianna FAWN 6' Air Temps



February Avg Soil Temps Marianna

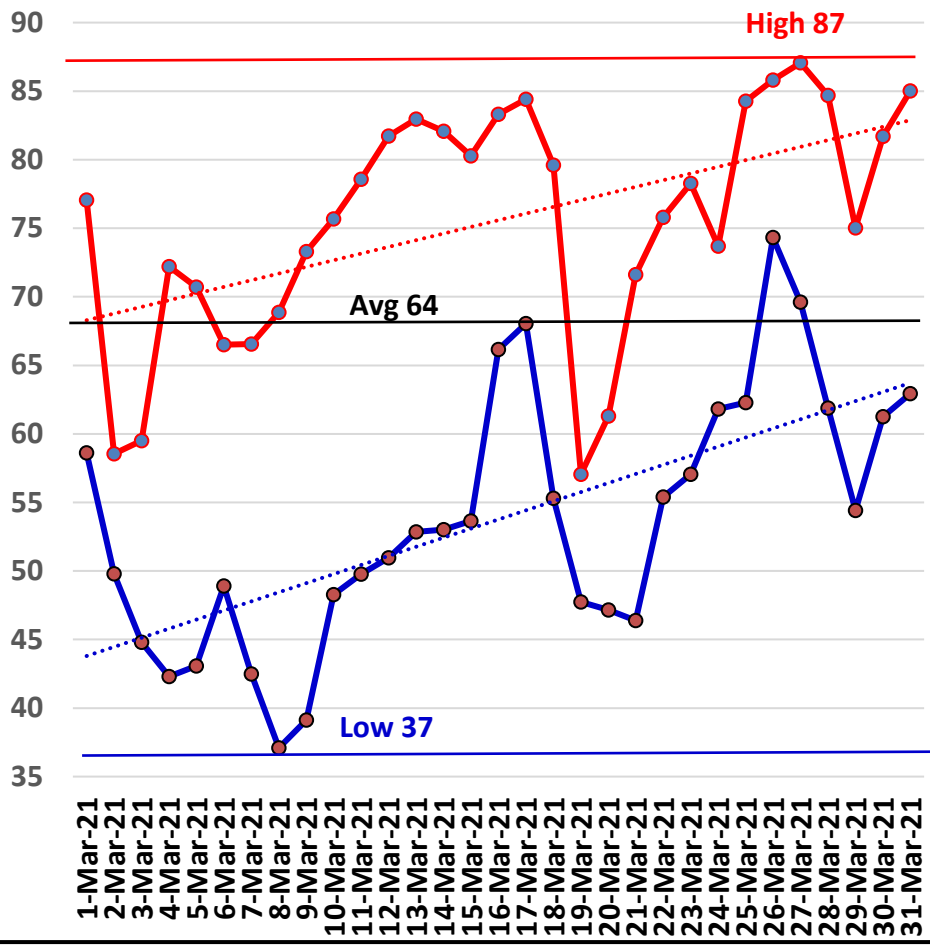


March Daily Weather Data

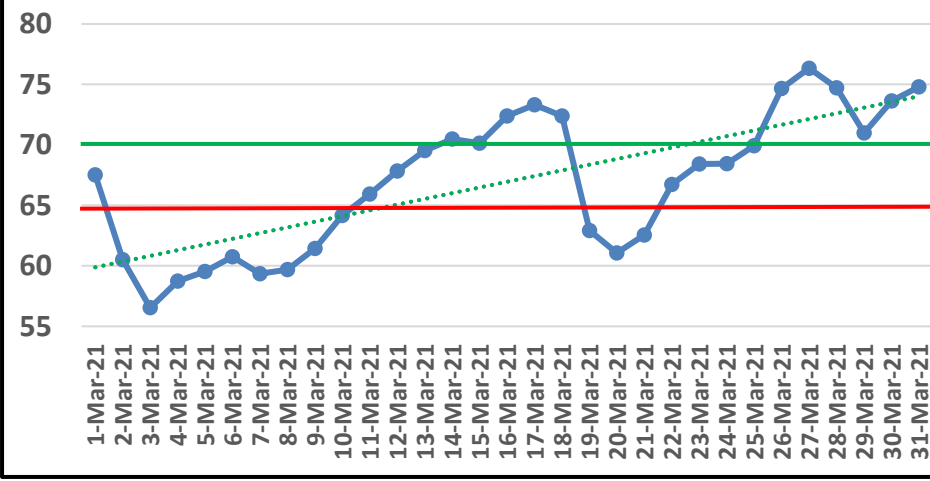
Temperature							Precipitation		
Date	Air Temp 6 ft			Soil Temp 4 inch			Rain	Evapo Trans	
	Avg	Min	Max	Avg	Min	Max	Inches	Inches	
1-Mar-21	67	59	77	68	64	71	0.86	0.07	
2-Mar-21	54	50	59	61	57	64	1.41	0.05	
3-Mar-21	50	45	60	57	54	61	0.01	0.07	
4-Mar-21	57	42	72	59	52	67	0.00	0.1	
5-Mar-21	58	43	71	60	53	66	0.00	0.09	
6-Mar-21	57	49	67	61	57	66	0.01	0.08	
7-Mar-21	53	42	67	59	53	68	0.00	0.1	
8-Mar-21	53	37	69	60	52	70	0.00	0.09	
9-Mar-21	57	39	73	61	52	72	0.00	0.1	
10-Mar-21	62	48	76	64	57	73	0.00	0.11	
11-Mar-21	65	50	79	66	58	76	0.00	0.12	
12-Mar-21	67	51	82	68	60	77	0.00	0.12	
13-Mar-21	68	53	83	70	62	79	0.00	N/A	
14-Mar-21	68	53	82	70	63	79	0.00	0.13	
15-Mar-21	68	54	80	70	64	77	0.00	0.11	
16-Mar-21	73	66	83	72	68	79	0.00	0.13	
17-Mar-21	74	68	84	73	69	79	0.00	0.12	
18-Mar-21	70	55	80	72	66	78	0.31	0.14	
19-Mar-21	53	48	57	63	60	66	0.00	0.07	
20-Mar-21	55	47	61	61	59	65	0.00	0.07	
21-Mar-21	57	46	72	63	56	72	0.00	0.11	
22-Mar-21	65	55	76	67	60	75	0.00	0.11	
23-Mar-21	67	57	78	68	63	75	0.00	0.11	
24-Mar-21	67	62	74	68	66	71	0.20	0.08	
25-Mar-21	74	62	84	70	65	76	0.00	0.13	
26-Mar-21	78	74	86	75	71	81	0.00	0.13	
27-Mar-21	77	70	87	76	71	84	0.00	0.14	
28-Mar-21	72	62	85	75	70	83	0.13	0.13	
29-Mar-21	64	54	75	71	63	81	0.00	0.14	
30-Mar-21	71	61	82	74	67	81	0.00	0.13	
31-Mar-21	72	63	85	75	70	82	0.55	0.13	
High			87			84			
Low		37			52				
Average	64	54	76	67	61	74			
Days over 95 ^o				0		Total for Month		3.48	3.21
Days below 32 ^o				0		Number of Rain Days		8	
						Historic Average		5.30	
						Deviation from Average		-1.82	
						Net Gain/loss (Rain - ET)			0.27

Year Cumulative	
Rain	ET
15.4	6.6
32.0	
15.4	
0.0	
	8.7

March Marianna FAWN 6' Air Temps



March Avg Soil Temps Marianna

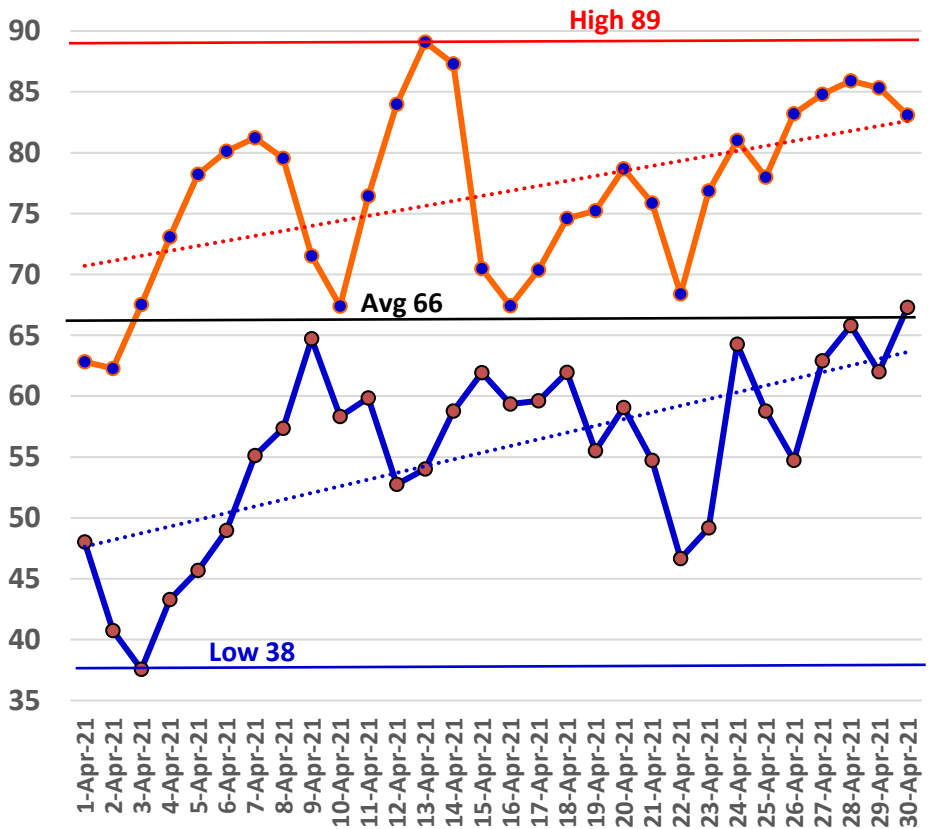


April Daily Weather Data

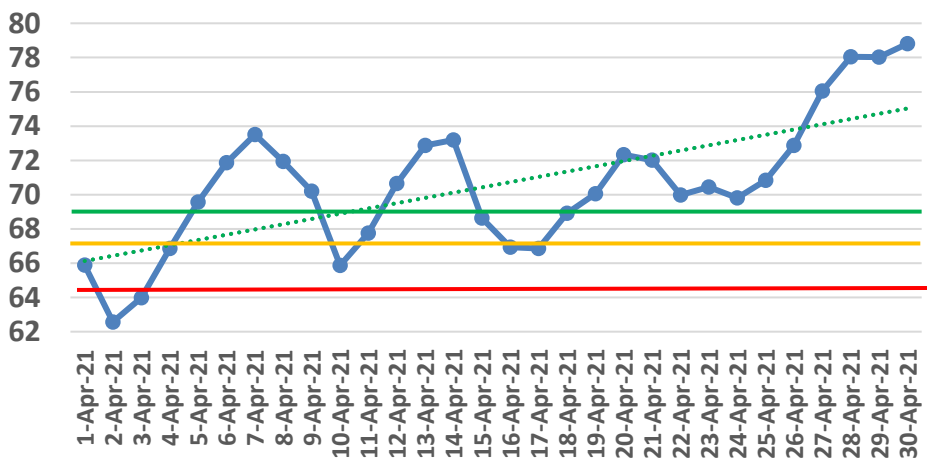
Temperature							Precipitation		
Date	Air Temp 6 ft			Soil Temp 4 inch			Rain	Evapo Trans	
	Avg	Min	Max	Avg	Min	Max	Inches	Inches	
1-Apr-21	55	48	63	66	60	72	0.00	0.13	
2-Apr-21	50	41	62	63	54	73	0.00	0.12	
3-Apr-21	53	38	68	64	55	75	0.00	0.12	
4-Apr-21	59	43	73	67	58	78	0.00	0.13	
5-Apr-21	63	46	78	70	60	81	0.00	0.14	
6-Apr-21	65	49	80	72	63	83	0.00	0.15	
7-Apr-21	67	55	81	74	67	83	0.00	0.14	
8-Apr-21	69	57	80	72	68	78	0.00	0.11	
9-Apr-21	69	65	72	70	68	72	0.47	0.06	
10-Apr-21	64	58	67	66	64	68	1.49	0.06	
11-Apr-21	68	60	76	68	63	75	0.00	0.1	
12-Apr-21	69	53	84	71	62	81	0.01	0.17	
13-Apr-21	72	54	89	73	64	84	0.00	0.16	
14-Apr-21	70	59	87	73	67	83	0.05	0.14	
15-Apr-21	65	62	70	69	67	71	0.39	0.06	
16-Apr-21	63	59	67	67	64	70	0.07	0.08	
17-Apr-21	63	60	70	67	64	72	0.99	0.08	
18-Apr-21	67	62	75	69	65	75	0.13	0.12	
19-Apr-21	66	56	75	70	62	80	0.00	0.16	
20-Apr-21	68	59	79	72	66	82	0.00	0.15	
21-Apr-21	65	55	76	72	65	82	0.00	0.17	
22-Apr-21	57	47	68	70	61	81	0.00	0.14	
23-Apr-21	63	49	77	70	63	79	0.00	0.14	
24-Apr-21	72	64	81	70	66	72	4.97	0.08	
25-Apr-21	69	59	78	71	64	79	0.00	0.18	
26-Apr-21	70	55	83	73	63	84	0.00	0.17	
27-Apr-21	74	63	85	76	68	85	0.00	0.18	
28-Apr-21	75	66	86	78	71	87	0.00	0.18	
29-Apr-21	74	62	85	78	71	86	0.00	0.16	
30-Apr-21	75	67	83	79	74	86	0	0.14	
High			89			87			
Low		38			54				
Average	66	56	77	71	64	79			
Days over 95 ^o				0			Total for Month	8.57	3.92
Days below 32 ^o				0			Number of Rain Days	9	
							Historic Average	4.38	
							Deviation from Average	4.19	
							Net Gain/loss (Rain - ET)		4.65

Year Cumulative	
Rain	ET
23.9	10.6
41.0	
19.7	
4.2	
	13.4

April Marianna FAWN 6' Air Temps



April Avg Soil Temps Marianna

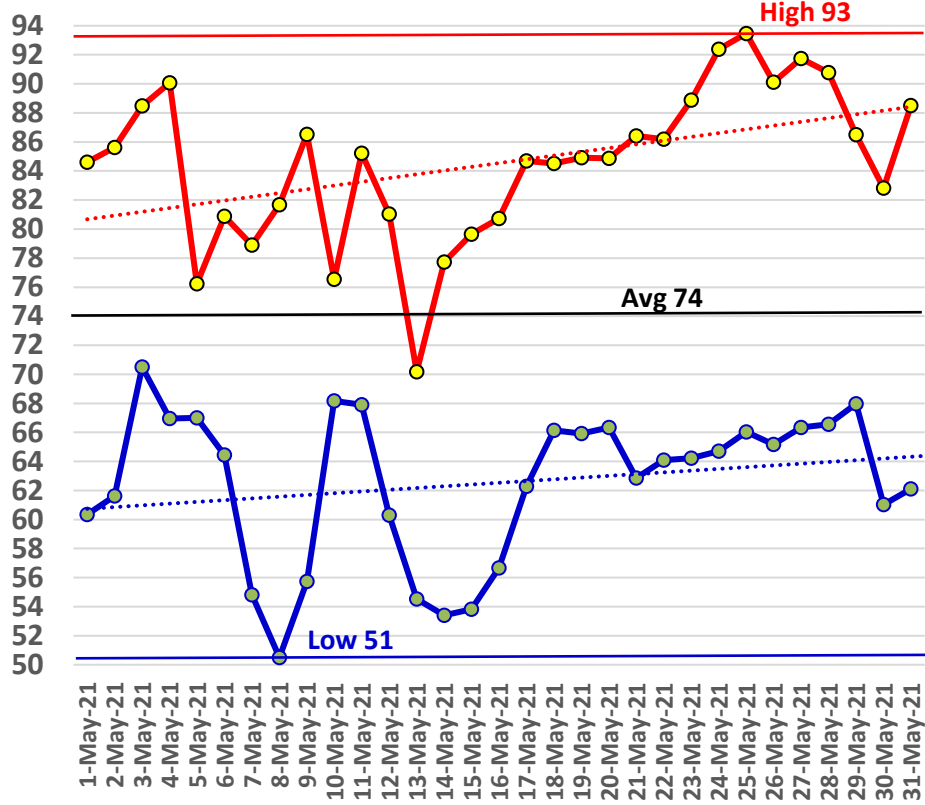


May Daily Weather Data

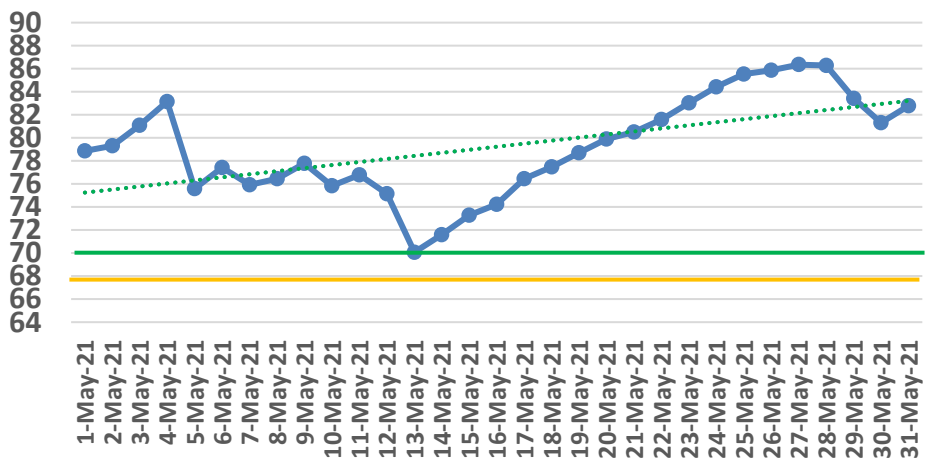
Date	Temperature						Precipitation	
	Air Temp 6 ft			Soil Temp 4 inch			Rain	Evapo Trans
	Avg	Min	Max	Avg	Min	Max	Inches	Inches
1-May-21	73	60	85	79	70	90	0.00	0.19
2-May-21	74	62	86	79	73	88	0.01	0.16
3-May-21	79	71	88	81	75	89	0.00	0.19
4-May-21	81	67	90	83	78	91	0.36	0.18
5-May-21	71	67	76	76	73	79	0.05	0.08
6-May-21	73	64	81	77	71	87	0.00	0.2
7-May-21	68	55	79	76	68	85	0.00	0.18
8-May-21	67	51	82	76	67	88	0.00	0.17
9-May-21	73	56	87	78	70	86	0.00	0.17
10-May-21	72	68	77	76	74	78	0.59	0.08
11-May-21	74	68	85	77	72	84	0.20	0.15
12-May-21	70	60	81	75	72	81	0.93	0.12
13-May-21	61	55	70	70	67	74	0.13	0.1
14-May-21	66	53	78	72	64	80	0.00	0.17
15-May-21	68	54	80	73	66	82	0.00	0.18
16-May-21	69	57	81	74	67	83	0.00	0.17
17-May-21	74	62	85	76	69	84	0.00	0.19
18-May-21	76	66	85	77	73	83	0.00	0.16
19-May-21	77	66	85	79	73	85	0.00	0.2
20-May-21	76	66	85	80	74	87	0.00	0.21
21-May-21	76	63	86	81	74	88	0.00	0.21
22-May-21	76	64	86	82	75	89	0.00	0.2
23-May-21	77	64	89	83	76	92	0.00	0.2
24-May-21	79	65	92	84	77	93	0.00	0.21
25-May-21	80	66	93	86	79	94	0.00	0.21
26-May-21	79	65	90	86	80	93	0.00	0.2
27-May-21	78	66	92	86	80	95	0.00	0.21
28-May-21	78	67	91	86	80	94	0.00	0.2
29-May-21	77	68	86	83	79	89	0.29	0.2
30-May-21	72	61	83	81	74	90	0.00	0.21
31-May-21	75	62	89	83	76	91	0	0.2
High			93			95		
Low		51			64			
Average	74	63	85	79	73	87		
				Total for Month			2.56	5.50
Days over 95 ^o				0	Number of Rain Days		8	
Days of 100 ^o				0	Historic Average		3.48	
Days below 32 ^o				0	Deviation from Average		-0.92	
				Net Gain/loss (Rain - ET)			-2.94	

Year Cumulative	
Rain	ET
26.5	16.1
49.0	
23.2	
3.3	
	10.4

May Marianna FAWN 6' Air Temps



May Avg Soil Temps Marianna

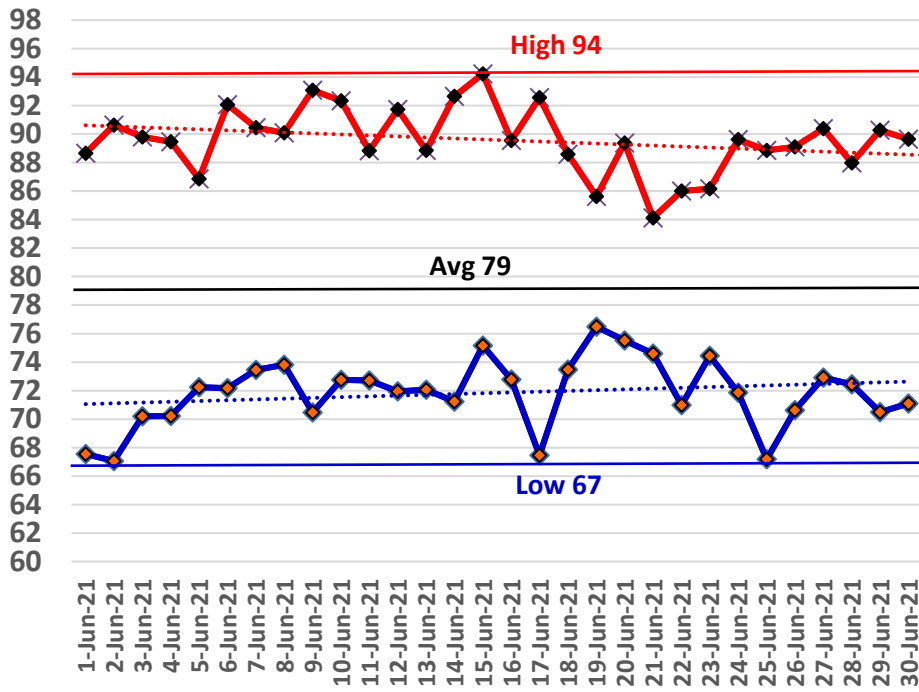


June Daily Weather Data

Date	Temperature						Precipitation		
	Air Temp 6 ft			Soil Temp 4 inch			Rain	Evapo Trans	
	Avg	Min	Max	Avg	Min	Max	Inches	Inches	
1-Jun-21	78	68	89	85	79	92	0.00	0.2	
2-Jun-21	79	67	91	85	79	92	0.00	0.19	
3-Jun-21	79	70	90	86	81	94	0.00	0.17	
4-Jun-21	80	70	89	87	81	93	0.00	0.17	
5-Jun-21	80	72	87	86	82	89	0.00	0.13	
6-Jun-21	80	72	92	85	81	92	0.00	0.17	
7-Jun-21	78	73	90	83	79	88	2.08	0.13	
8-Jun-21	80	74	90	82	78	88	0.02	0.18	
9-Jun-21	81	70	93	83	78	91	0.00	0.23	
10-Jun-21	82	73	92	84	79	90	0.00	0.23	
11-Jun-21	78	73	89	83	80	86	0.34	0.14	
12-Jun-21	78	72	92	82	79	89	0.93	0.17	
13-Jun-21	78	72	89	82	77	89	0.11	0.2	
14-Jun-21	82	71	93	84	78	91	0.00	0.24	
15-Jun-21	82	75	94	85	81	91	0.00	0.19	
16-Jun-21	81	73	90	84	79	90	0.00	N/A	
17-Jun-21	80	67	93	85	79	92	0.00	0.22	
18-Jun-21	80	73	89	85	82	88	0.00	0.15	
19-Jun-21	79	76	86	82	80	84	1.25	0.09	
20-Jun-21	81	76	89	82	79	87	0.04	0.19	
21-Jun-21	77	75	84	81	79	83	0.02	0.1	
22-Jun-21	76	71	86	79	75	83	2.88	0.13	
23-Jun-21	79	74	86	82	78	88	0.00	0.17	
24-Jun-21	78	72	90	82	78	90	0.00	0.18	
25-Jun-21	78	67	89	83	76	90	0.00	0.22	
26-Jun-21	80	71	89	84	79	90	0.00	0.19	
27-Jun-21	80	73	90	85	80	92	0.00	0.2	
28-Jun-21	79	72	88	84	81	89	0.00	0.15	
29-Jun-21	78	70	90	85	80	92	0.00	0.17	
30-Jun-21	77	71	90	84	80	92	0.51	0.17	
High			94			94			
Low		67			75				
Average	79	72	90	84	79	90			
				Total for Month			8.18	5.07	
Days over 95 ^o				0			Number of Rain Days	10	
Days of 100 ^o				0			Historic Average	5.00	
Days below 32 ^o				0			Deviation from Average	3.18	
				Net Gain/loss (Rain - ET)				3.11	

Year Cumulative	
Rain	ET
34.7	21.1
59.0	
28.2	
6.4	
	13.5

June Marianna FAWN 6' Air Temps

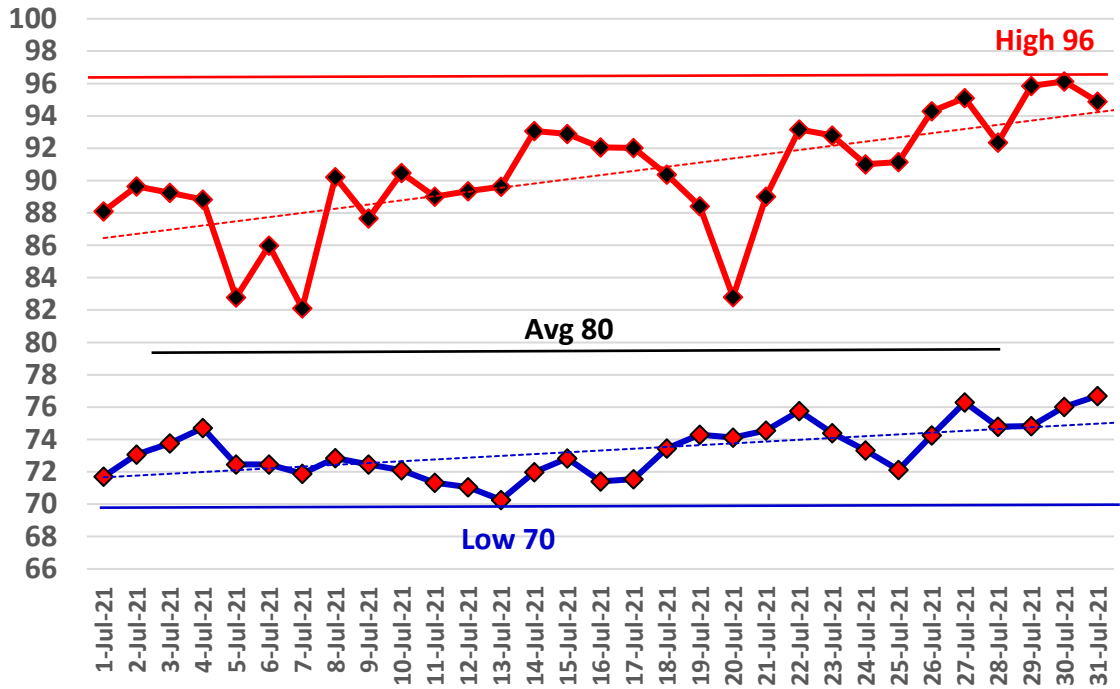


July Daily Weather Data

Temperature							Precipitation	
Date	Air Temp 6 ft			Soil Temp 4 inch			Rain	Evapo Trans
	Avg	Min	Max	Avg	Min	Max	Inches	Inches
1-Jul-21	78	72	88	83	79	90	0.00	0.17
2-Jul-21	79	73	90	84	79	90	0.30	0.17
3-Jul-21	79	74	89	84	80	90	0.06	0.17
4-Jul-21	80	75	89	84	80	90	0.01	0.17
5-Jul-21	77	72	83	81	77	84	2.08	0.11
6-Jul-21	77	72	86	81	78	85	1.09	0.13
7-Jul-21	76	72	82	80	77	84	0.24	0.12
8-Jul-21	79	73	90	82	78	89	0.00	0.18
9-Jul-21	78	72	88	82	79	87	0.98	0.11
10-Jul-21	78	72	90	82	78	90	0.24	0.19
11-Jul-21	79	71	89	83	78	89	0.00	0.18
12-Jul-21	77	71	89	82	79	87	0.01	0.16
13-Jul-21	78	70	90	83	78	89	0.00	0.17
14-Jul-21	82	72	93	85	79	93	0.00	0.22
15-Jul-21	80	73	93	86	81	94	0.13	0.20
16-Jul-21	79	71	92	86	80	94	0.23	0.22
17-Jul-21	81	72	92	86	81	92	0.00	0.19
18-Jul-21	80	73	90	86	81	91	0.00	0.18
19-Jul-21	79	74	88	85	82	90	0.42	0.16
20-Jul-21	77	74	83	83	81	86	0.93	0.12
21-Jul-21	81	75	89	84	80	88	0.03	0.16
22-Jul-21	84	76	93	85	81	90	0.04	0.21
23-Jul-21	81	74	93	86	82	91	0.94	0.14
24-Jul-21	81	73	91	86	82	91	0.00	0.20
25-Jul-21	82	72	91	86	82	91	0.00	0.22
26-Jul-21	84	74	94	88	83	92	0.00	0.22
27-Jul-21	82	76	95	88	85	93	0.00	0.19
28-Jul-21	80	75	92	87	84	92	0.01	0.18
29-Jul-21	84	75	96	88	84	93	0.00	0.22
30-Jul-21	86	76	96	89	85	94	0.00	0.22
31-Jul-21	84	77	95	90	86	94	0.00	0.20
High			96			94		
Low		70			77			
Average	80	73	90	85	81	90		
				Total for Month			7.74	5.48
Days over 95 ^o				3			42.4	
Days of 100 ^o				0			76.0	
Days below 32 ^o				0			34.4	
				Deviation from Average			1.60	8.0
				Net Gain/loss (Rain - ET)				2.26

Year Cumulative	
Rain	ET
42.4	26.6
76.0	
34.4	
8.0	
	15.8

July Marianna FAWN 6' Air Temps

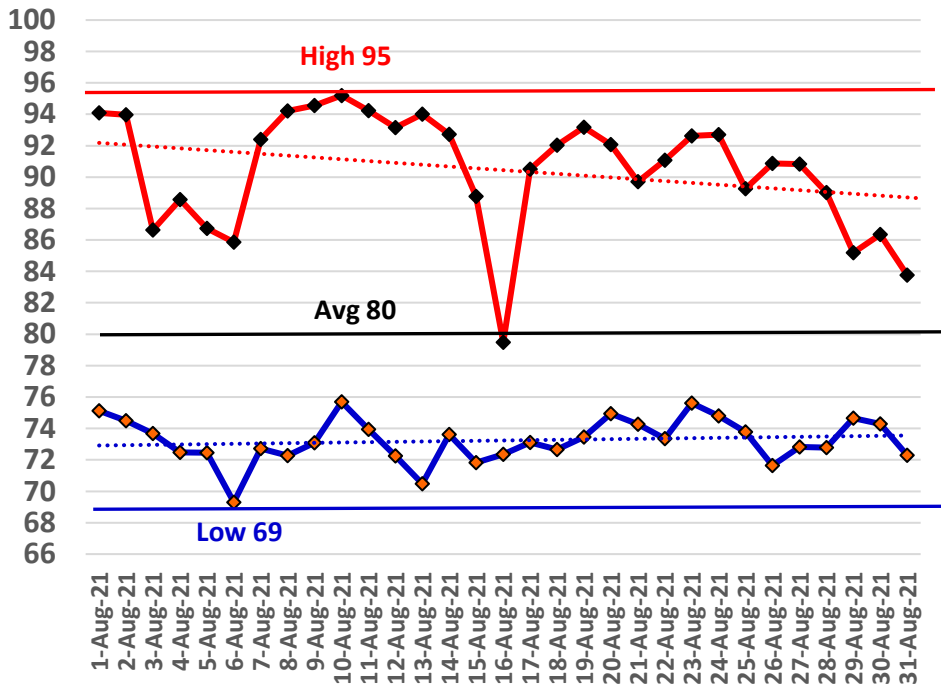


August Daily Weather Data

Date	Temperature						Precipitation	
	Air Temp 6 ft			Soil Temp 4 inch			Rain	Evapo Trans
	Avg	Min	Max	Avg	Min	Max	Inches	Inches
1-Aug-21	82	75	94	89	86	94	0.00	0
2-Aug-21	81	75	94	88	85	93	0.55	0.13
3-Aug-21	79	74	87	85	83	90	0.00	0
4-Aug-21	80	72	89	85	82	90	0.00	0
5-Aug-21	79	72	87	85	82	89	0.00	0
6-Aug-21	77	69	86	84	81	88	0.00	0
7-Aug-21	82	73	92	87	81	93	0.00	0
8-Aug-21	82	72	94	88	83	96	0.00	0
9-Aug-21	83	73	95	90	84	97	0.00	0
10-Aug-21	82	76	95	90	86	95	0.05	0.01
11-Aug-21	81	74	94	89	83	96	0.09	0.04
12-Aug-21	78	72	93	86	83	95	0.72	0.4
13-Aug-21	81	70	94	86	80	93	0.00	0
14-Aug-21	80	74	93	86	82	92	0.02	0.01
15-Aug-21	81	72	89	85	81	91	0.00	0
16-Aug-21	76	72	79	81	76	85	3.36	0.34
17-Aug-21	81	73	91	81	76	88	0.00	0
18-Aug-21	82	73	92	84	79	91	0.00	0
19-Aug-21	83	73	93	86	81	93	0.00	0
20-Aug-21	80	75	92	86	82	94	0.00	0
21-Aug-21	79	74	90	86	82	92	0.00	0
22-Aug-21	82	73	91	86	82	91	0.00	0
23-Aug-21	82	76	93	87	83	93	0.51	0.31
24-Aug-21	81	75	93	86	82	92	0.00	0
25-Aug-21	77	74	89	83	81	89	1.09	0.32
26-Aug-21	80	72	91	84	79	90	0.00	0
27-Aug-21	80	73	91	85	80	91	0.04	0.03
28-Aug-21	79	73	89	83	80	88	0.26	0.25
29-Aug-21	78	75	85	81	80	84	0.62	0.21
30-Aug-21	78	74	86	80	78	83	0.03	0.03
31-Aug-21	78	72	84	79	76	80	2.03	0.32
High			95			97		
Low		69			76			
Average	80	73	90	85	81	91		
				Total for Month			9.37	2.40
Days over 95 ⁰				1	Number of Rain Days			13
Days of 100 ⁰				0	Historic Average			5.36
Days below 32 ⁰				0	Deviation from Average			4.01
				Net Gain/loss (Rain - ET)				6.97

Year Cumulative	
Rain	ET
51.8	29.0
89.0	
39.7	
12.0	
	22.8

August Marianna FAWN 6' Air Temps



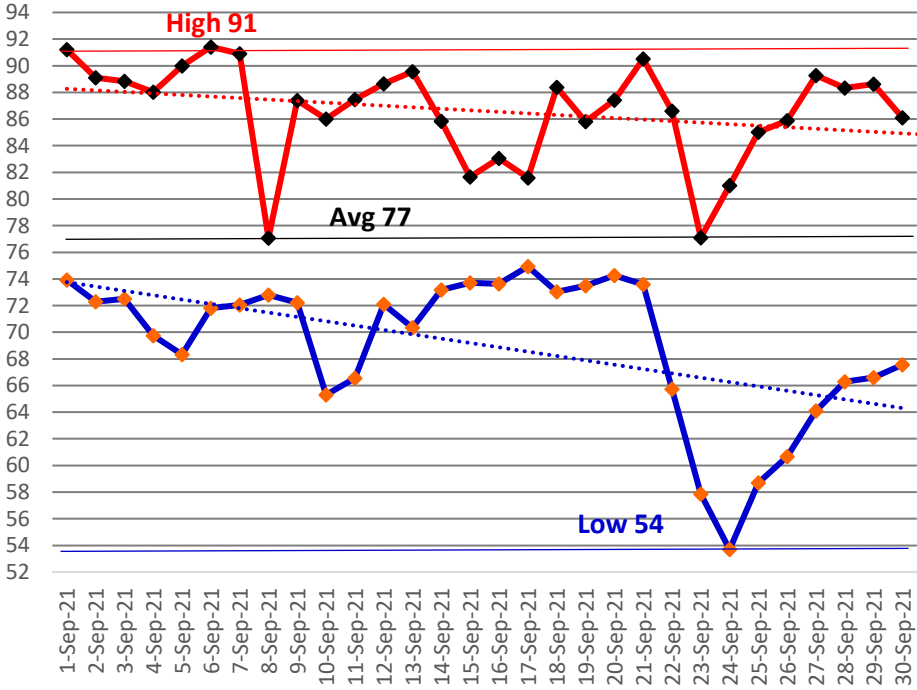
Summer Rain Days - 40 of 92 days

September Daily Weather Data

Temperature							Precipitation		
Date	Air Temp 6 ft			Soil Temp 4 inch			Rain	Evapo Trans	
	Avg	Min	Max	Avg	Min	Max	Inches	Inches	
1-Sep-21	81	74	91	81	77	89	2.56	0.18	
2-Sep-21	79	72	89	83	78	89	0.18	0.18	
3-Sep-21	79	73	89	83	78	89	0.02	N/A	
4-Sep-21	78	70	88	83	78	89	0.00	N/A	
5-Sep-21	79	68	90	83	78	90	0.00	N/A	
6-Sep-21	81	72	91	85	79	92	0.00	N/A	
7-Sep-21	79	72	91	85	81	92	0.29	N/A	
8-Sep-21	75	73	77	81	79	83	0.83	0.05	
9-Sep-21	78	72	87	81	77	87	0.00	0.16	
10-Sep-21	75	65	86	81	76	87	0.00	0.17	
11-Sep-21	77	67	87	81	76	86	0.00	0.15	
12-Sep-21	79	72	89	83	79	88	0.00	0.16	
13-Sep-21	80	70	90	84	79	90	0.00	0.17	
14-Sep-21	78	73	86	83	81	86	0.00	0.1	
15-Sep-21	76	74	82	81	79	82	0.26	0.07	
16-Sep-21	77	74	83	80	78	83	0.31	0.1	
17-Sep-21	77	75	82	81	79	82	0.01	0.08	
18-Sep-21	77	73	88	81	78	87	0.50	0.12	
19-Sep-21	77	73	86	82	79	86	0.10	0.12	
20-Sep-21	78	74	87	82	80	86	0.02	0.12	
21-Sep-21	80	74	91	83	79	88	0.00	0.15	
22-Sep-21	77	66	87	82	78	87	0.00	0.14	
23-Sep-21	67	58	77	77	73	83	0.00	0.13	
24-Sep-21	67	54	81	77	71	85	0.00	0.13	
25-Sep-21	71	59	85	79	72	86	0.00	0.13	
26-Sep-21	73	61	86	80	74	88	0.00	0.14	
27-Sep-21	77	64	89	81	76	88	0.00	0.14	
28-Sep-21	77	66	88	83	77	90	0.00	0.14	
29-Sep-21	76	67	89	82	78	86	0.00	0.11	
30-Sep-21	77	68	86	81	77	86	0.00	0.1	
High			91			92			
Low		54			71				
Average	77	69	87	82	77	87			
Days over 95 ^o				0	Total for Month			5.08	3.24
Days of 100 ^o				0	Number of Rain Days			11.00	
Days below 32 ^o				0	Historic Average			4.45	
Days of 90+				6	Deviation from Average			0.63	
					Net Gain/loss (Rain - ET)				1.84

Year Cumulative	
Rain	ET
56.9	32.3
100.0	
44.2	
12.7	
	24.6

September Marianna FAWN 6' Air Temps

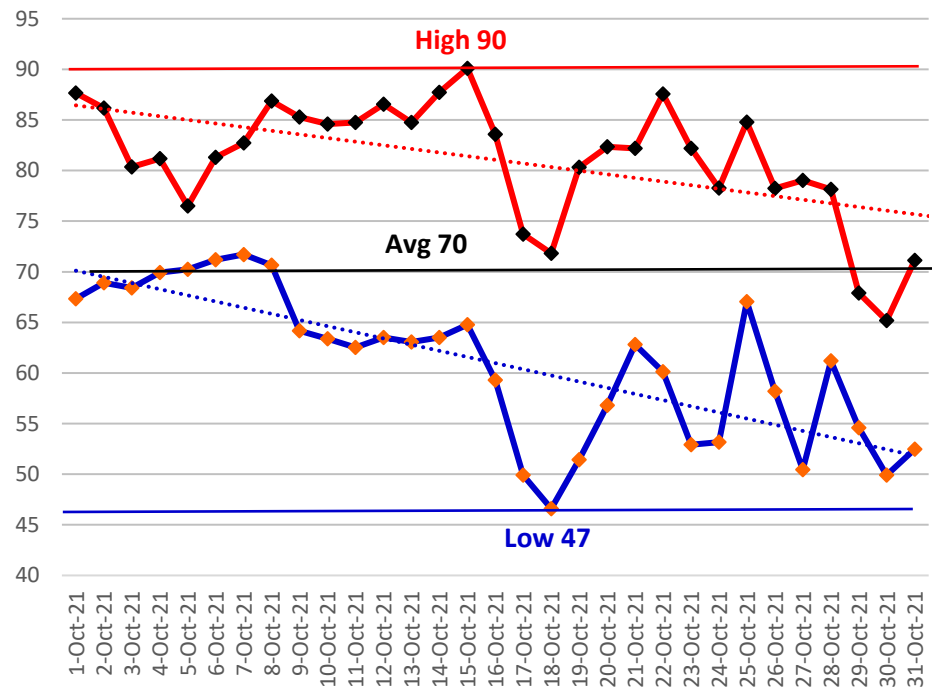


October Daily Weather Data

Date	Temperature						Precipitation		
	Air Temp 6 ft			Soil Temp 4 inch			Rain	Evapo Trans	
	Avg	Min	Max	Avg	Min	Max	Inches	Inches	
1-Oct-21	77	67	88	82	77	89	0.00	0.14	
2-Oct-21	77	69	86	82	78	88	0.00	0.12	
3-Oct-21	73	68	80	80	77	82	0.17	0.08	
4-Oct-21	74	70	81	78	76	81	0.46	0.07	
5-Oct-21	73	70	77	76	74	78	0.91	0.06	
6-Oct-21	74	71	81	76	74	80	0.30	0.09	
7-Oct-21	76	72	83	77	74	81	0.03	0.08	
8-Oct-21	77	71	87	79	75	84	0.00	0.11	
9-Oct-21	74	64	85	77	72	84	0.00	0.13	
10-Oct-21	73	63	85	78	72	85	0.00	0.12	
11-Oct-21	73	63	85	78	72	84	0.00	0.12	
12-Oct-21	74	64	87	78	73	84	0.00	0.12	
13-Oct-21	73	63	85	79	74	85	0.00	0.12	
14-Oct-21	75	64	88	79	74	85	0.00	0.11	
15-Oct-21	77	65	90	81	75	87	0.00	0.12	
16-Oct-21	73	59	84	79	75	83	0.00	0.1	
17-Oct-21	61	50	74	74	69	80	0.00	0.09	
18-Oct-21	59	47	72	72	68	76	0.00	0.08	
19-Oct-21	65	51	80	73	67	80	0.00	0.09	
20-Oct-21	69	57	82	74	69	81	0.00	0.1	
21-Oct-21	72	63	82	76	72	80	0.00	0.09	
22-Oct-21	73	60	88	77	73	83	0.00	0.11	
23-Oct-21	66	53	82	75	70	81	0.00	0.09	
24-Oct-21	67	53	78	73	69	76	0.04	0.07	
25-Oct-21	74	67	85	76	72	81	0.04	0.1	
26-Oct-21	67	58	78	74	71	79	0.00	0.1	
27-Oct-21	64	50	79	73	68	79	0.00	0.08	
28-Oct-21	71	61	78	72	68	75	2.67	0.09	
29-Oct-21	60	55	68	66	63	70	0.00	0.07	
30-Oct-21	57	50	65	64	60	68	0.00	0.07	
31-Oct-21	60	52	71	65	62	71	0.00	0.08	
High			90			89			
Low		47			60				
Average	70	61	81	76	71	81			
Days over 95 ⁰				0			Total for Month		
Days below 32 ⁰				0			4.62	3.00	
							8.00		
							2.81		
							1.81		
							1.62		

Year Cumulative	
Rain	ET
61.5	35.3
108.0	
47.0	
14.5	
	26.2

October Marianna FAWN 6' Air Temps

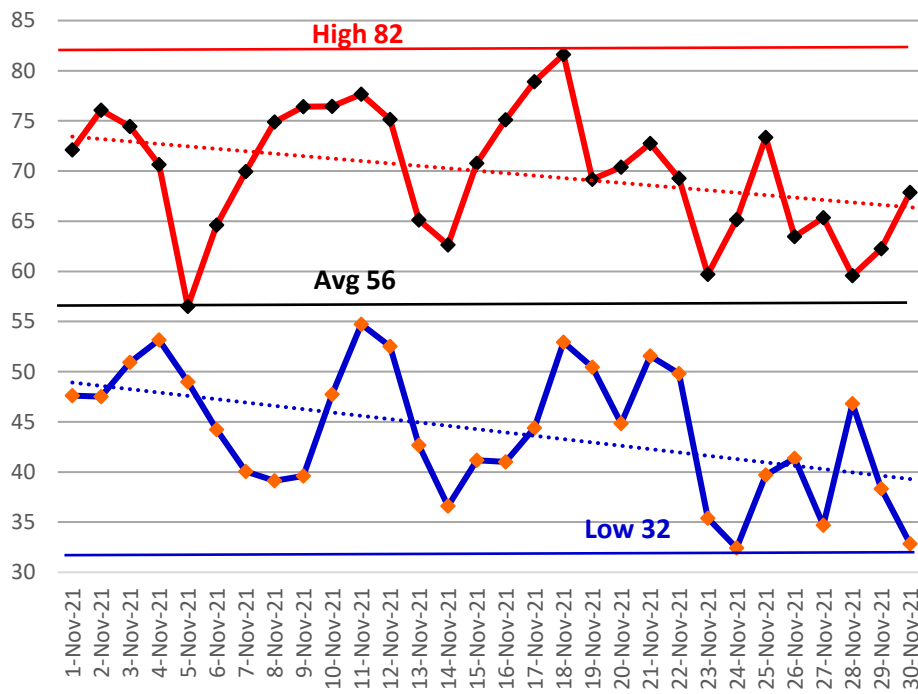


November Daily Weather Data

Temperature							Precipitation			
Date	Air Temp 6 ft			Soil Temp 4 inch			Rain	Evapo Trans		
	Avg	Min	Max	Avg	Min	Max	Inches	Inches		
1-Nov-21	59	48	72	65	60	71	0.00	0.07		
2-Nov-21	62	48	76	66	60	73	0.02	0.08		
3-Nov-21	62	51	74	67	62	73	0.00	0.07		
4-Nov-21	61	53	71	67	63	72	0.00	0.07		
5-Nov-21	52	49	57	63	61	66	0.01	0.04		
6-Nov-21	52	44	65	62	57	67	0.00	0.06		
7-Nov-21	54	40	70	62	56	68	0.00	0.06		
8-Nov-21	55	39	75	63	57	70	0.00	0.06		
9-Nov-21	56	40	76	63	57	70	0.00	0.06		
10-Nov-21	61	48	76	65	60	71	0.00	0.07		
11-Nov-21	66	55	78	67	63	71	0.23	0.07		
12-Nov-21	63	53	75	67	62	72	0.01	0.07		
13-Nov-21	55	43	65	62	58	67	0.00	0.06		
14-Nov-21	49	37	63	59	54	65	0.00	0.05		
15-Nov-21	54	41	71	60	55	66	0.00	0.06		
16-Nov-21	57	41	75	61	55	68	0.00	0.06		
17-Nov-21	61	44	79	63	57	69	0.00	0.07		
18-Nov-21	66	53	82	65	60	71	0.00	0.07		
19-Nov-21	59	50	69	65	61	69	0.00	0.06		
20-Nov-21	56	45	70	63	58	69	0.00	0.06		
21-Nov-21	59	52	73	64	60	69	0.00	0.06		
22-Nov-21	58	50	69	63	60	67	0.02	0.06		
23-Nov-21	47	35	60	59	55	64	0.00	0.04		
24-Nov-21	48	32	65	58	53	64	0.00	0.05		
25-Nov-21	57	40	73	60	54	66	0.00	0.05		
26-Nov-21	57	41	63	62	57	65	0.01	0.05		
27-Nov-21	48	35	65	59	54	64	0.00	0.04		
28-Nov-21	53	47	60	58	57	60	0.00	0.05		
29-Nov-21	50	38	62	58	54	63	0.00	0.04		
30-Nov-21	48	33	68	57	52	63	0.00	0.04		
High			82			73				
Low		32			52					
Average	56	44	70	62	58	68				
Days over 95 ⁰				0			Total for Month		0.30	1.75
Days below 32 ⁰				0			Number of Rain Days		6.00	114.0
							Historic Average		3.32	50.3
							Deviation from Average		-3.02	11.5
							Net Gain/loss (Rain - ET)		-1.45	24.8

Year Cumulative	
Rain	ET
61.8	37.0
114.0	
50.3	
11.5	
	24.8

November Marianna FAWN 6' Air Temps

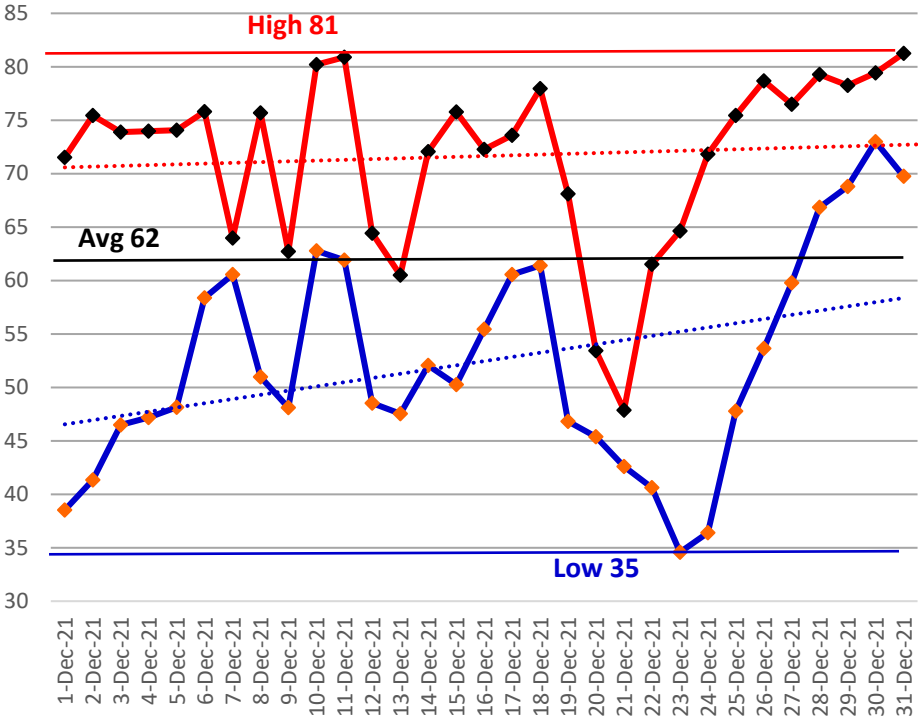


December Daily Weather Data

Temperature							Precipitation			
Date	Air Temp 6 ft			Soil Temp 4 inch			Rain	Evapo Trans		
	Avg	Min	Max	Avg	Min	Max	Inches	Inches		
1-Dec-21	53	39	72	58	53	65	0.00	0.05		
2-Dec-21	57	41	75	60	55	66	0.00	0.05		
3-Dec-21	59	46	74	61	57	65	0.00	0.06		
4-Dec-21	59	47	74	62	59	67	0.00	0.05		
5-Dec-21	61	48	74	63	60	67	0.01	0.06		
6-Dec-21	65	58	76	65	62	68	0.28	0.06		
7-Dec-21	62	61	64	64	63	65	0.08	0.04		
8-Dec-21	66	51	76	66	61	70	0.77	0.06		
9-Dec-21	57	48	63	61	59	63	0.13	0.05		
10-Dec-21	70	63	80	66	63	70	0.08	0.06		
11-Dec-21	72	62	81	69	67	72	0.23	0.06		
12-Dec-21	56	49	64	63	59	67	0.14	0.04		
13-Dec-21	53	48	60	59	56	63	0.00	0.04		
14-Dec-21	60	52	72	62	59	68	0.00	0.05		
15-Dec-21	61	50	76	62	58	67	0.00	0.05		
16-Dec-21	63	55	72	63	60	67	0.00	0.05		
17-Dec-21	66	61	74	66	63	69	0.15	0.05		
18-Dec-21	70	61	78	67	64	70	0.17	0.06		
19-Dec-21	62	47	68	66	59	68	0.37	0.06		
20-Dec-21	48	45	53	57	56	59	0.03	0.04		
21-Dec-21	46	43	48	54	53	56	0.40	0.04		
22-Dec-21	49	41	62	54	50	59	0.00	0.04		
23-Dec-21	47	35	65	53	47	59	0.00	0.04		
24-Dec-21	54	36	72	54	48	61	0.00	0.04		
25-Dec-21	62	48	75	58	53	64	0.00	0.05		
26-Dec-21	67	54	79	62	57	68	0.00	N/A		
27-Dec-21	68	60	77	64	62	68	0.01	0.06		
28-Dec-21	71	67	79	67	64	70	0.00	0.06		
29-Dec-21	73	69	78	68	66	71	0.20	0.05		
30-Dec-21	75	73	79	71	69	73	1.05	0.06		
31-Dec-21	75	70	81	72	69	74	0.00	0.07		
High			81			74				
Low		35			47					
Average	62	52	72	62	59	66				
Days over 95 ^o				0			Total for Month		4.10	1.55
Days below 32 ^o				0			Number of Rain Days		16.00	130.0
Total days for year							Historic Average		4.42	54.7
<32^o or >95^o				5 4			Deviation from Average		-0.32	11.1
Net Gain/loss (Rain - ET)								2.55	27.3	

Year Cumulative	
Rain	ET
65.9	38.6
130.0	
54.7	
11.1	
	27.3

December Marianna FAWN 6' Air Temps

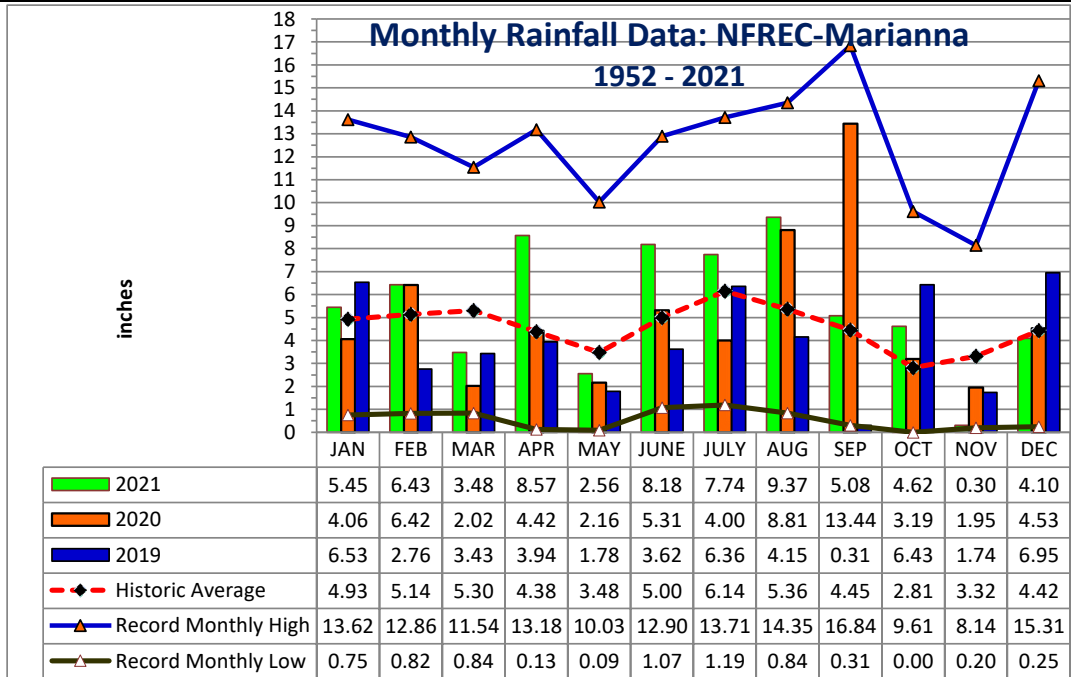




YEAR	JAN	FEB	MAR	APR	MAY	JUNE	JULY	AUG	SEP	OCT	NOV	DEC	TOTAL
1952	1.14	8.88	4.48	2.11	5.13	1.12	5.95	8.81	3.09	0.65	3.26	3.42	48.04
1953	4.84	7.26	3.03	8.43	2.43	3.97	6.84	1.63	6.33	0.65	4.09	15.31	64.81
1954	1.33	3.49	2.62	2.58	1.96	3.46	3.28	2.84	1.72	1.30	2.66	1.44	28.68
1955	3.66	1.83	0.84	5.80	3.03	1.62	6.75	3.75	2.44	2.10	0.72	0.77	33.31
1956	3.59	5.18	3.77	2.04	4.03	5.45	8.52	4.09	6.44	5.08	0.28	3.34	51.81
1957	0.75	2.65	5.17	5.74	4.60	5.75	9.83	5.91	16.84	1.31	6.24	2.22	67.01
1958	4.48	3.61	4.73	7.22	5.57	6.00	8.39	3.45	3.68	1.88	1.75	2.32	53.08
1959	3.67	7.06	8.50	5.73	6.95	3.77	4.83	3.67	3.07	7.93	0.21	1.53	56.92
1960	3.36	7.08	3.41	6.80	3.20	4.75	4.97	4.80	6.22	2.00	0.47	2.35	49.41
1961	4.23	4.15	3.64	5.57	3.97	4.41	3.99	11.09	2.60	0.00	2.84	6.23	52.72
1962	1.72	2.80	8.13	3.28	2.86	3.67	7.97	6.07	3.07	2.82	5.16	1.67	49.22
1963	7.31	3.02	3.18	1.36	3.50	7.99	5.16	1.50	5.25	0.01	4.22	6.05	48.55
1964	10.80	6.81	6.41	9.47	2.23	5.68	9.22	3.07	7.47	9.61	3.35	6.44	80.56
1965	2.63	6.09	5.51	3.96	0.18	9.60	3.26	4.18	4.48	3.41	1.81	3.60	48.71
1966	5.56	9.84	2.57	0.77	5.80	3.13	3.25	9.82	5.09	1.41	2.03	4.62	53.89
1967	8.27	3.32	2.19	0.13	2.61	7.02	6.49	3.58	1.40	1.86	2.40	7.98	47.25
1968	1.28	2.30	3.40	2.50	3.39	1.18	5.45	4.61	2.99	1.41	5.11	5.34	38.96
1969	1.68	3.49	7.08	4.54	3.01	1.71	13.18	3.05	5.64	1.50	1.22	3.80	49.90
1970	4.16	9.20	8.86	1.83	1.81	3.69	5.04	8.01	0.49	4.40	2.21	3.13	52.83
1971	1.97	6.11	7.15	3.17	3.03	3.85	5.20	6.76	2.47	1.84	1.94	3.70	47.19
1972	3.62	6.03	6.41	0.38	2.87	8.89	3.78	5.39	2.14	2.44	3.29	3.77	49.01
1973	8.14	7.71	8.38	7.60	6.87	3.63	11.12	4.51	5.40	0.27	3.64	5.33	72.60
1974	5.24	5.80	2.66	3.40	3.78	1.56	3.29	8.01	4.68	0.84	2.14	2.89	44.29
1975	10.21	6.36	4.91	10.35	3.97	4.10	13.71	5.40	3.81	4.35	2.89	3.28	73.34
1976	6.99	1.50	4.89	1.87	8.89	3.08	3.03	3.47	5.47	6.18	5.72	3.97	55.06
1977	3.47	1.81	6.52	0.88	0.60	6.36	3.55	5.22	9.83	2.59	8.14	4.19	53.16
1978	7.28	3.28	7.25	4.65	6.73	3.79	7.25	4.90	0.98	0.20	6.01	3.65	55.97
1979	7.30	7.78	3.26	7.75	6.22	1.31	7.49	6.30	11.51	0.53	4.47	2.84	66.76
1980	6.58	2.96	11.54	9.29	4.50	3.50	5.87	2.53	4.56	4.71	1.52	0.25	57.81
1981	1.70	5.32	5.94	3.03	2.73	4.74	4.02	2.53	2.44	1.75	0.85	4.94	39.99
1982	4.17	5.61	2.91	5.93	5.39	3.00	7.51	4.42	6.00	2.65	2.34	9.14	59.07
1983	4.92	6.84	8.53	7.88	2.27	5.66	1.19	2.53	8.97	3.52	5.90	7.65	65.86
1984	5.49	5.01	8.62	6.29	2.50	5.31	12.01	5.76	0.32	1.60	1.63	0.80	55.34
1985	4.60	4.46	2.60	1.18	4.44	5.68	3.68	5.58	1.42	7.42	7.91	5.34	54.31
1986	5.68	10.27	3.21	0.83	2.26	1.85	2.75	4.12	2.35	2.22	4.40	5.68	45.62
1987	8.62	5.52	7.23	0.40	4.46	5.43	5.51	4.18	2.27	0.06	4.02	0.81	48.51
1988	5.57	6.40	8.41	2.69	0.28	1.07	5.43	3.98	5.53	1.98	3.28	1.23	45.85
1989	1.59	2.74	4.96	3.63	7.01	12.90	11.19	3.06	3.36	7.20	4.71	5.45	67.80
1990	5.26	4.57	4.55	3.00	3.22	4.02	3.65	2.91	0.85	1.34	0.93	3.42	37.72
1991	13.62	3.44	9.00	5.32	10.03	5.30	10.67	3.89	1.53	1.17	1.60	3.00	68.57
1992	8.37	6.29	7.92	2.50	1.41	11.16	8.69	6.72	3.19	2.08	7.40	2.93	68.66
1993	12.00	3.38	7.41	1.50	1.60	4.18	6.68	3.89	3.44	2.90	2.27	3.63	52.88
1994	8.64	2.53	6.25	4.34	1.82	11.41	10.95	9.08	6.44	7.62	2.53	3.79	75.40
1995	5.23	3.13	4.29	4.35	3.90	5.56	3.02	6.16	0.86	7.51	4.12	1.78	49.91
1996	3.64	5.99	8.47	5.76	1.50	5.43	2.83	14.28	5.32	3.81	2.01	3.65	62.69
1997	6.68	5.29	2.63	10.08	5.91	6.41	5.73	4.65	3.78	2.10	6.85	8.44	68.55
1998	6.28	8.30	6.11	2.24	1.45	2.35	4.37	2.20	16.31	0.30	2.05	1.98	53.94
1999	6.95	2.90	3.61	1.50	6.71	8.99	8.64	4.02	4.33	3.13	3.56	2.50	56.84

YEAR	JAN	FEB	MAR	APR	MAY	JUNE	JULY	AUG	SEP	OCT	NOV	DEC	TOTAL
2000	3.78	4.96	4.48	4.05	0.09	4.00	3.40	7.15	7.20	0.71	4.43	3.21	47.46
2001	2.16	0.82	10.00	1.99	2.52	8.24	4.66	8.21	1.90	1.51	1.70	0.78	44.49
2002	3.82	2.44	5.51	5.78	2.19	3.45	10.34	3.30	11.83	7.36	7.76	5.99	69.77
2003	2.30	7.03	8.18	4.89	3.11	6.11	7.84	5.99	2.39	3.58	3.04	3.12	57.58
2004	3.19	7.66	0.90	4.37	1.19	6.66	4.92	1.67	10.01	3.89	4.97	3.25	52.68
2005	3.33	2.31	9.05	7.04	1.67	7.47	9.44	11.71	1.62	0.03	3.15	4.81	61.63
2006	4.82	3.90	0.91	1.61	4.97	1.99	2.22	5.18	0.91	3.09	3.41	5.43	38.44
2007	5.99	2.45	1.10	0.99	1.57	3.97	3.94	4.18	1.27	4.79	1.89	4.03	36.17
2008	4.26	9.00	9.11	4.28	1.46	8.64	4.02	9.29	0.74	5.11	3.18	8.23	67.32
2009	2.33	3.26	7.11	7.73	9.17	2.78	3.88	3.19	5.22	3.39	2.35	9.57	59.98
2010	7.53	3.99	3.41	4.01	5.09	2.92	2.31	0.84	1.33	0.22	5.82	0.63	38.10
2011	4.33	4.04	5.00	0.92	0.78	1.66	5.11	1.87	2.26	1.84	1.94	3.75	33.50
2012	3.79	7.49	5.94	3.17	1.42	7.35	5.05	14.35	5.17	1.75	1.30	4.10	60.88
2013	1.05	12.86	2.99	3.54	0.64	3.72	13.39	13.17	2.14	1.96	3.91	4.44	63.81
2014	2.15	4.99	7.70	13.18	4.03	2.32	5.69	2.55	6.03	2.03	5.93	5.32	61.92
2015	3.4	3.8	2.17	9.52	3.55	4.04	4.85	2.75	4.15	1.00	7.33	8.67	55.23
2016	4.8	3.51	8.15	4.94	1.74	3.49	2.79	7.28	4.19	0.22	0.8	12.33	54.24
2017	7.28	3.78	2.11	2.12	4.28	11.53	6.82	4.47	3.75	0.97	0.2	2.76	50.07
2018	4.26	10.50	5.38	3.72	5.06	7.97	5.99	5.67	2.67	5.66	6.94	11.86	75.68
2019	6.53	2.76	3.43	3.94	1.78	3.62	6.36	4.15	0.31	6.43	1.74	6.95	48.00
2020	4.06	6.42	2.02	4.42	2.16	5.31	4.00	8.81	13.44	3.19	1.95	4.53	60.31
2021	5.45	6.43	3.48	8.57	2.56	8.18	7.74	9.37	5.08	4.62	0.30	4.10	65.88

Deviation from the Average Monthly Rainfall													
Inches	0.52	1.29	-1.82	4.19	-0.92	3.18	1.60	4.01	0.63	1.81	-3.02	-0.32	11.14
Monthly Average Rainfall, 1952-2021													
AVG.	4.93	5.14	5.30	4.38	3.48	5.00	6.14	5.36	4.45	2.81	3.32	4.42	54.74
% of Annual Rainfall Occuring each Month													
	9.0%	9.4%	9.7%	8.0%	6.4%	9.1%	11.2%	9.8%	8.1%	5.1%	6.1%	8.1%	
Record High/Low for the Month													
LOW	0.75	0.82	0.84	0.13	0.09	1.07	1.19	0.84	0.31	0.00	0.20	0.25	28.68
HIGH	13.62	12.86	11.54	13.18	10.03	12.90	13.71	14.35	16.84	9.61	8.14	15.31	80.56



Jackson County
Monthly Cumulative Rainfall, 1952 - 2021
North Florida Research & Education Center Marianna,
FL



YEAR	JAN	FEB	MAR	APR	MAY	JUNE	JULY	AUG	SEP	OCT	NOV	DEC	Wet Ranking	Dry Ranking
1952	1.14	10.02	14.50	16.61	21.74	22.86	28.81	37.62	40.71	41.36	44.62	48.04	53	18
1953	4.84	12.10	15.13	23.56	25.99	29.96	36.80	38.43	44.76	45.41	49.50	64.81	16	55
1954	1.33	4.82	7.44	10.02	11.98	15.44	18.72	21.56	23.28	24.58	27.24	28.68	70	1
1955	3.66	5.49	6.33	12.13	15.16	16.78	23.53	27.28	29.72	31.82	32.54	33.31	69	2
1956	3.59	8.77	12.54	14.58	18.61	24.06	32.58	36.67	43.11	48.19	48.47	51.81	43	28
1957	0.75	3.40	8.57	14.31	18.91	24.66	34.49	40.40	57.24	58.55	64.79	67.01	12	59
1958	4.48	8.09	12.82	20.04	25.61	31.61	40.00	43.45	47.13	49.01	50.76	53.08	38	33
1959	3.67	10.73	19.23	24.96	31.91	35.68	40.51	44.18	47.25	55.18	55.39	56.92	27	44
1960	3.36	10.44	13.85	20.65	23.85	28.60	33.57	38.37	44.59	46.59	47.06	49.41	47	24
1961	4.23	8.38	12.02	17.59	21.56	25.97	29.96	41.05	43.65	43.65	46.49	52.72	41	30
1962	1.72	4.52	12.65	15.93	18.79	22.46	30.43	36.50	39.57	42.39	47.55	49.22	48	23
1963	7.31	10.33	13.51	14.87	18.37	26.36	31.52	33.02	38.27	38.28	42.50	48.55	51	20
1964	10.80	17.61	24.02	33.49	35.72	41.40	50.62	53.69	61.16	70.77	74.12	80.56	1	70
1965	2.63	8.72	14.23	18.19	18.37	27.97	31.23	35.41	39.89	43.30	45.11	48.71	50	21
1966	5.56	15.40	17.97	18.74	24.54	27.67	30.92	40.74	45.83	47.24	49.27	53.89	36	35
1967	8.27	11.59	13.78	13.91	16.52	23.54	30.03	33.61	35.01	36.87	39.27	47.25	56	15
1968	1.28	3.58	6.98	9.48	12.87	14.05	19.50	24.11	27.10	28.51	33.62	38.96	63	8
1969	1.68	5.17	12.25	16.79	19.80	21.51	34.69	37.74	43.38	44.88	46.10	49.90	46	25
1970	4.16	13.36	22.22	24.05	25.86	29.55	34.59	42.60	43.09	47.49	49.70	52.83	40	31
1971	1.97	8.08	15.23	18.40	21.43	25.28	30.48	37.24	39.71	41.55	43.49	47.19	57	14
1972	3.62	9.65	16.06	16.44	19.31	28.20	31.98	37.37	39.51	41.95	45.24	49.01	49	22
1973	8.14	15.85	24.23	31.83	38.70	42.33	53.45	57.96	63.36	63.63	67.27	72.60	5	66
1974	5.24	11.04	13.70	17.10	20.88	22.44	25.73	33.74	38.42	39.26	41.40	44.29	61	10
1975	10.21	16.57	21.48	31.83	35.80	39.90	53.61	59.01	62.82	67.17	70.06	73.34	4	67
1976	6.99	8.49	13.38	15.25	24.14	27.22	30.25	33.72	39.19	45.37	51.09	55.06	32	39
1977	3.47	5.28	11.80	12.68	13.28	19.64	23.19	28.41	38.24	40.83	48.97	53.16	37	34
1978	7.28	10.56	17.81	22.46	29.19	32.98	40.23	45.13	46.11	46.31	52.32	55.97	29	42
1979	7.30	15.08	18.34	26.09	32.31	33.62	41.11	47.41	58.92	59.45	63.92	66.76	13	58
1980	6.58	9.54	21.08	30.37	34.87	38.37	44.24	46.77	51.33	56.04	57.56	57.81	25	46
1981	1.70	7.02	12.96	15.99	18.72	23.46	27.48	30.01	32.45	34.20	35.05	39.99	62	9
1982	4.17	9.78	12.69	18.62	24.01	27.01	34.52	38.94	44.94	47.59	49.93	59.07	24	47
1983	4.92	11.76	20.29	28.17	30.44	36.10	37.29	39.82	48.79	52.31	58.21	65.86	15	56
1984	5.49	10.50	19.12	25.41	27.91	33.22	45.23	50.99	51.31	52.91	54.54	55.34	30	41
1985	4.60	9.06	11.66	12.84	17.28	22.96	26.64	32.22	33.64	41.06	48.97	54.31	33	38
1986	5.68	15.95	19.16	19.99	22.25	24.10	26.85	30.97	33.32	35.54	39.94	45.62	59	12
1987	8.62	14.14	21.37	21.77	26.23	31.66	37.17	41.35	43.62	43.68	47.70	48.51	52	19
1988	5.57	11.97	20.38	23.07	23.35	24.42	29.85	33.83	39.36	41.34	44.62	45.85	58	13
1989	1.59	4.33	9.29	12.92	19.93	32.83	44.02	47.08	50.44	57.64	62.35	67.80	10	61
1990	5.26	9.83	14.38	17.38	20.60	24.62	28.27	31.18	32.03	33.37	34.30	37.72	66	5
1991	13.62	17.06	26.06	31.38	41.41	46.71	57.38	61.27	62.80	63.97	65.57	68.57	8	63
1992	8.37	14.66	22.58	25.08	26.49	37.65	46.34	53.06	56.25	58.33	65.73	68.66	7	64
1993	12.00	15.38	22.79	24.29	25.89	30.07	36.75	40.64	44.08	46.98	49.25	52.88	39	32
1994	8.64	11.17	17.42	21.76	23.58	34.99	45.94	55.02	61.46	69.08	71.61	75.40	3	68
1995	5.23	8.36	12.65	17.00	20.90	26.46	29.48	35.64	36.50	44.01	48.13	49.91	45	26
1996	3.64	9.63	18.10	23.86	25.36	30.79	33.62	47.90	53.22	57.03	59.04	62.69	18	53
1997	6.68	11.97	14.60	24.68	30.59	37.00	42.73	47.38	51.16	53.26	60.11	68.55	9	62
1998	6.28	14.58	20.69	22.93	24.38	26.73	31.10	33.30	49.61	49.91	51.96	53.94	35	36
1999	6.95	9.85	13.46	14.96	21.67	30.66	39.30	43.32	47.65	50.78	54.34	56.84	28	43

YEAR	JAN	FEB	MAR	APR	MAY	JUNE	JULY	AUG	SEP	OCT	NOV	DEC	Ranking	Ranking
2000	3.78	8.74	13.22	17.27	17.36	21.36	24.76	31.91	39.11	39.82	44.25	47.46	55	16
2001	2.16	2.98	12.98	14.97	17.49	25.73	30.39	38.60	40.50	42.01	43.71	44.49	60	11
2002	3.82	6.26	11.77	17.55	19.74	23.19	33.53	36.83	48.66	56.02	63.78	69.77	6	65
2003	2.30	9.33	17.51	22.40	25.51	31.62	39.46	45.45	47.84	51.42	54.46	57.58	26	45
2004	3.19	10.85	11.75	16.12	17.31	23.97	28.89	30.56	40.57	44.46	49.43	52.68	42	29
2005	3.33	5.64	14.69	21.73	23.40	30.87	40.31	52.02	53.64	53.67	56.82	61.63	20	51
2006	4.82	8.72	9.63	11.24	16.21	18.20	20.42	25.60	26.51	29.60	33.01	38.44	64	7
2007	5.99	8.44	9.54	10.53	12.10	16.07	20.01	24.19	25.46	30.25	32.14	36.17	67	4
2008	4.26	13.26	22.37	26.65	28.11	36.75	40.77	50.06	50.80	55.91	59.09	67.32	11	60
2009	2.33	5.59	12.70	20.43	29.60	32.38	36.26	39.45	44.67	48.06	50.41	59.98	23	48
2010	7.53	11.52	14.93	18.94	24.03	26.95	29.26	30.10	31.43	31.65	37.47	38.10	65	6
2011	4.33	8.37	13.37	14.29	15.07	16.73	21.84	23.71	25.97	27.81	29.75	33.50	68	3
2012	3.79	11.28	17.22	20.39	21.81	29.16	34.21	48.56	53.73	55.48	56.78	60.88	21	50
2013	1.05	13.91	16.90	20.44	21.08	24.80	38.19	51.36	53.50	55.46	59.37	63.81	17	54
2014	2.15	7.14	14.84	28.02	32.05	34.37	40.06	42.61	48.64	50.67	56.60	61.92	19	52
2015	3.40	7.20	9.37	18.89	22.44	26.48	31.33	34.08	38.23	39.23	46.56	55.23	31	40
2016	4.80	8.31	16.46	21.40	23.14	26.63	29.42	36.70	40.89	41.11	41.91	54.24	34	37
2017	7.28	11.06	13.17	15.29	19.57	31.10	37.92	42.39	46.14	47.11	47.31	50.07	44	27
2018	4.26	14.76	20.14	23.86	28.92	36.89	42.88	48.55	51.22	56.88	63.82	75.68	2	69
2019	6.53	9.29	12.72	16.66	18.44	22.06	28.42	32.57	32.88	39.31	41.05	48.00	54	17
2020	4.06	10.48	12.50	16.92	19.08	24.39	28.39	37.20	50.64	53.83	55.78	60.31	22	49
2021	5.45	11.88	15.36	23.93	26.49	34.67	42.41	51.78	56.86	61.48	61.78	65.88	14	57

Deviation from the Average Accumulation

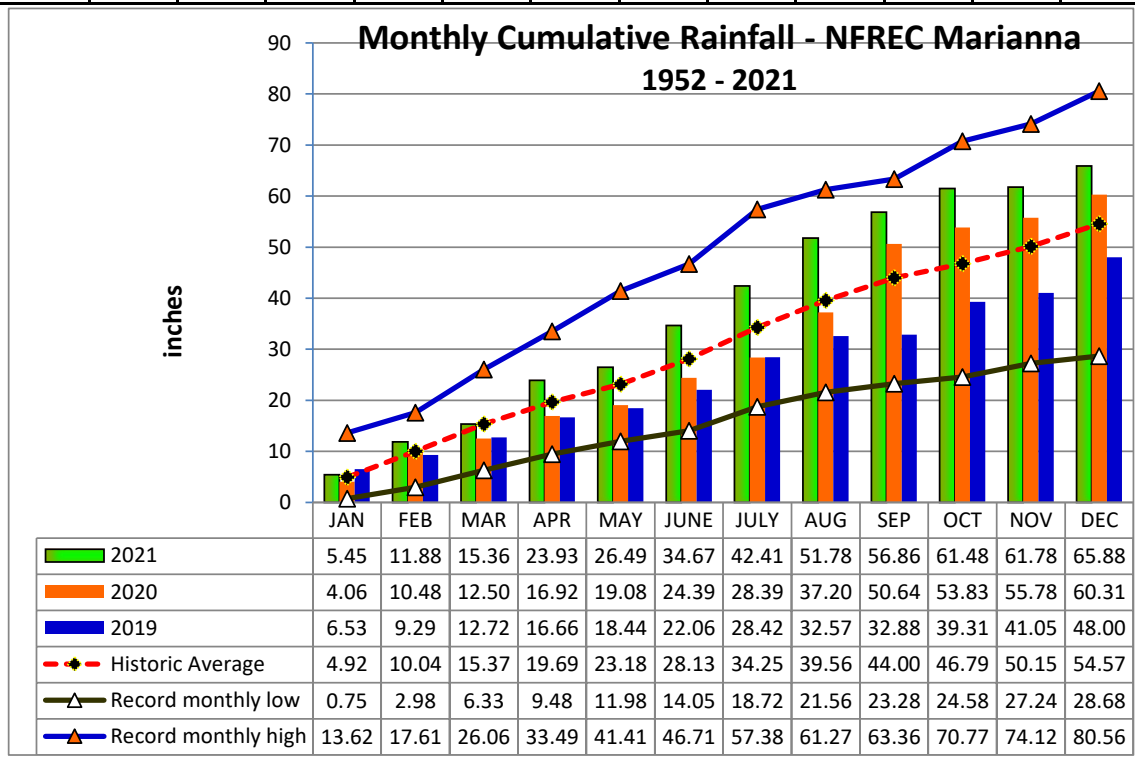
Inches	0.53	1.84	-0.01	4.24	3.31	6.54	8.16	12.22	12.86	14.69	11.63	11.31
--------	------	------	-------	------	------	------	------	-------	-------	-------	-------	-------

Average Accumulation, 1952-2020

Inches	4.92	10.04	15.37	19.69	23.18	28.13	34.25	39.56	44.00	46.79	50.15	54.57
--------	------	-------	-------	-------	-------	-------	-------	-------	-------	-------	-------	-------

Record High/Low Accumulation

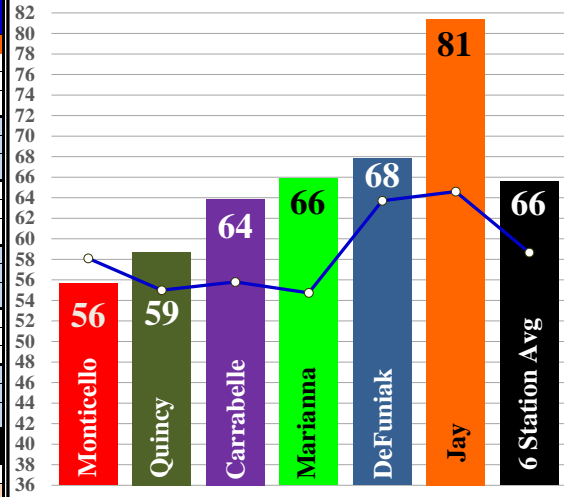
LOW	0.75	2.98	6.33	9.48	11.98	14.05	18.72	21.56	23.28	24.58	27.24	28.68
HIGH	13.62	17.61	26.06	33.49	41.41	46.71	57.38	61.27	63.36	70.77	74.12	80.56



2021 UF/IFAS FAWN Panhandle Weather Station Summary

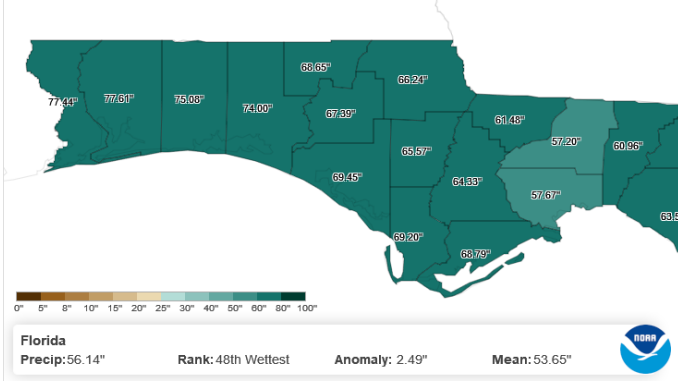
FAWN Station	Data	Jan	Feb	Mar	Apr	May	June	July	Aug	Sept	Oct	Nov	Dec	Total
Monticello	Rain	6.7	4.3	2.4	2.7	1.6	9.3	5.4	11.6	4.4	4.4	1.2	1.6	55.6
	Hist Avg	4.5	4.6	6.1	4.1	3.4	5.7	7.0	6.9	5.4	3.6	3.1	3.7	58.1
	Deviation	2.2	-0.3	-3.7	-1.4	-1.8	3.6	-1.6	4.7	-1.0	0.8	-1.9	-2.1	-2.5
Quincy	Rain	7.2	6.2	3.0	3.4	1.3	9.5	6.2	8.1	6.0	4.6	0.1	3.2	58.7
	Hist Avg	5.0	4.3	5.6	3.7	4.2	5.2	6.3	6.2	4.1	3.4	3.3	3.7	55.0
	Deviation	2.2	1.9	-2.6	-0.3	-2.9	4.3	-0.1	1.9	1.9	1.2	-3.2	-0.5	3.7
Carrabelle	Rain	8.3	4.1	2.9	4.6	4.5	8.1	5.7	10.9	6.1	4.6	0.8	3.3	63.9
	Hist Avg	3.8	3.7	4.9	3.0	2.7	5.3	7.3	7.9	7.3	3.7	3.2	3.0	55.8
	Deviation	4.5	0.4	-2.0	1.6	1.8	2.8	-1.6	3.0	-1.3	0.9	-2.4	0.3	8.1
Marianna	Rain	5.5	6.4	3.5	8.6	2.6	8.2	7.7	9.4	5.1	4.6	0.3	4.1	65.9
	Hist Avg	4.9	5.1	5.3	4.4	3.5	5.0	6.1	5.4	4.4	2.8	3.3	4.4	54.7
	Deviation	0.5	1.3	-1.8	4.2	-0.9	3.2	1.6	4.0	0.6	1.8	-3.0	-0.3	11.1
DeFuniak	Rain	4.3	4.7	6.4	10.5	5.3	8.9	9.5	7.2	4.1	4.1	1.0	1.9	67.8
	Hist Avg	4.9	5.4	5.6	3.9	4.5	7.1	7.2	6.3	5.7	3.7	4.8	4.5	63.7
	Deviation	-0.7	-0.7	0.8	6.6	0.8	1.8	2.3	0.8	-1.6	0.4	-3.8	-2.7	4.1
Jay	Rain	2.0	5.1	5.4	8.3	7.4	12.6	11.6	11.8	7.4	5.4	0.3	4.0	81.4
	Hist Avg	5.5	5.3	6.6	4.8	4.8	5.8	7.0	6.2	5.5	3.3	5.1	4.7	64.6
	Deviation	-3.5	-0.2	-1.2	3.5	2.6	6.8	4.6	5.6	1.9	2.1	-4.8	-0.7	16.8
6 Station Average		5.7	5.1	3.9	6.3	3.8	9.4	7.7	9.8	5.5	4.6	0.6	3.0	65.6
6 Station Historic Average		4.8	4.7	5.7	4.0	3.9	5.7	6.8	6.5	5.4	3.4	3.8	4.0	58.7
Deviation from Avg		0.9	0.4	-1.8	2.4	-0.1	3.7	0.9	3.4	0.1	1.2	-3.2	-1.0	6.9

Panhandle FAWN Station 2021 Rainfall vs Historic Average



County Precipitation

January - December 2021



FAWN Station	Monticello	Quincy	Carrabelle	Marianna	DeFuniak	Jay	Average
Rainfall	56	59	64	66	68	81	66
Historic Average	58	55	56	55	64	65	59