



In This issue:

4-H YOUTH NEWS 2-3

AGRICULTURE & HORTICULTURE NEWS 4

FAMILY & CONSUMER SCIENCES NEWS 5

FAMU EXTENSION NEWS 6

CALENDAR OF EVENTS 7

EXTENSION STAFF 8

**UF/IFAS EXTENSION
JEFFERSON COUNTY
2729 W. WASHINGTON HWY.
MONTICELLO, FL 32344
850-342-0187**



WEBSITE:
SFYL.IFAS.UFL.EDU/JEFFERSON/



Greetings,

As the weather cools, football season is in full gear. Jefferson County Extension Programs are also in full gear to serve you!

To 4-H families, make sure that you **ENROLL NOW** for the **2021-2022 Club** year.

November is a reminder of Thanksgiving, a time to be grateful for family, friends, health, and harvest. As we gather for a meal of thanks, please remember those less fortunate. Let us intentionally sow the fruits of the spirit, love, peace, patience, goodness, and kindness.

If you have any questions regarding Extension programs or activities, please call the Extension office at 850-342-0188 or email jefferson@ufl.edu.

John Lilly
Jefferson County Extension Director/4-H Agent

4-H Youth News



JOY (Jefferson Outreach for Youth) is gearing up for its annual toy drive, which will provide Christmas gifts for local youngsters. Christmas is the time of the year when we solicit donations to assist with the campaign.

Decorated boxes placed around town: Somerset K-12, The Monticello New, Tupelos, TMH, The 1st Bank, The Homeschool Resource Center, Capital City Bank, Aucilla Christian Academy, Ole Happy Days & Dollar General where donated toys can be left.

Monetary donations may be mailed to JOY Box 25 Monticello, FL 32344. Youth will receive gifts for boys and girls: art/crafts, books, blankets, educational toys/games, outdoor play, pretend play, and school supplies.

Contact John Lilly at jgl@ufl.edu for more information or if you have any questions.



The Chick Chain Project!

The 4-H chick chain project teaches you how to raise and care for chickens using RESEARCH- based methods and PRACTICES. PARTICIPANTS will attend educational workshops, and show their birds at a final show. With the recent COVID-19 pandemic placing a new emphasis on fresh from the farm food products, the 4-h chick chain PROJECT is a great way to raise chickens or start a new project.

Project Timeline:
August 23rd, 2021 - March 12th, 2022

2021-2022 Breeds

- Cochins
- Delaware
- Leghorn
- Orpington (any variety)
- Plymouth Rock
- Rhode Island
- Sussex
- Novelty/ All other Breeds



FLORIDA 4-H
Chick Chain

For more information or if you are interested in having these programs in your classroom, please call 850-342-0187 or email: John Lilly at jgl@ufl.edu Emily Nolen at emily.nolen@famu.edu

4-H In-School Clubs

Mrs. Indy Mack's 3rd Grade Classroom



President- Harmony Gentle, Vice-President -Quantez Parker, Secretary- Kennyna Lenard, Assistant Secretary- Allannah Bellamy, Sgt.-At-Arms- Ta'chyla Crumity, Teacher- Mrs. Indy Mack

Mrs. Sharico Bellamy's 4th Grade Classroom



L-R: President- Mariyah Hagan, Vice-President-Rontell McCay, Secretary- Sanai Bellamy, Assistant Secretary-Lalia Copland & Sgt.-At-Arms - En'rique Wilson
 In the rear: Teacher - Mrs. Sharico Bellamy

Ms. Nortory Mack's 5th Grade Classroom



L-R: President- Diona Bryant, Vice-President- Ganeia Larry, Secretary- Shanella Miller, Assistant Secretary- Dustin Clemons, Sgt.-At-Arms- Martavius Mack

The 4-H Embryology Program

This program will teach the participants about the life cycle of the chicken! Starting with the incubation of the egg, then the hatching process, and continue to the proper care for adult chickens.

The egg and poultry industry are very important parts of our agriculture and economic systems. The students will also have a better understanding of those systems.

Objectives of the program:

- Identify parts of the egg and their functions
- Make and record observations
- Observe and learn the stages of the embryonic development
- Provide proper post - hatch care to the chicks
- Develop a greater appreciation for animal life
- Learn about other opportunities available in 4-H



4-H Youth News



4-H Day at the North Florida Fair

4-H Day at the North Florida Fair is Saturday, November 13. Jefferson County 4-H will transport 4-H Youth and adult volunteers on the bus to the Fair. The bus will leave the **UF/IFAS Jefferson County Extension Office** promptly at **10:30 A.M.** and return around **5:00 P.M.**

Parents /guardians are responsible for dropping off and picking up their child. The cost is \$1.00. A dollar will be refunded to the child if they return to the bus on time for departure.

An unlimited ride wristband can be purchased for **\$15.00** from the 4-H Office. Wristbands are valid on 4-H Day only. Please provide your child with money for food.



The deadline to purchase wristbands is November 1, 2021.
Note: Depending on the Covid-19 positivity rate, transportation may be canceled.

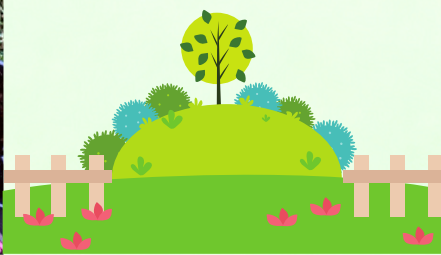


Working Soldiers Fall Garden Project

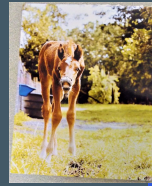
This fall the Working Soldiers 4-H Club have started a fall garden! A fall garden is a great way to have fresh vegetables that are perfect for the season! We can't wait for the vegetables and hard working youth grow big and strong! Our reasons for planting a fall garden:

- Learn to eat healthier and more leafy green vegetables
- Learn how to plant a garden
- Learn to raise our own vegetables

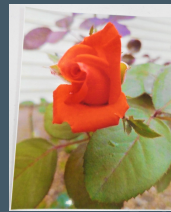
The kids were very excited to participate! They also stated that they cannot wait to share and eat some of the yummy green plants.



Photography Contest Winners!



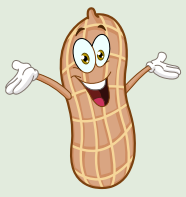
Standing proud for winning first and third overall, Isabella Gray is holding her certificated and ribbon. A cute fowl was caught with a smile on it's face making the perfect picture. Two baby goats taking a stroll through the field were caught on camera by Isabella Gray.



Standing proudly with his awards is Kegan Morrisette who placed first in the Junior Division. Kegan Morrisette captured a Bird of Paradise. This beautiful flower was photographed by Kegan Morrisette.



Emma Tharpe was awarded second overall in the Senior Division and her beach photo won second place. Emma's first place photo is the beautiful black and white beach picture. An outstanding black and white photo of a flower freshly rained on was submitted by Emma Tharpe.



Agriculture & Horticulture News

Peanut Fun Facts!

Peanuts, also known as groundnuts, earthnuts or goobers have a long history of cultivation, especially here in Jefferson County. Unlike other nuts, peanuts are grown underground and not on a tree (hence the name nickname groundnut or earthnut). With peanut harvest season here and our annual Peanut Butter Challenge in full force, here are some fun facts about peanuts!

- 99% of peanut farms are family-owned, businesses averaging 200 acres
- In 2017, Jefferson County grew peanuts on 2,123 acres
- There are four different types of peanuts – Runner, Valencia, Spanish and Virginia
- Peanut plants are legumes and fix beneficial nitrogen back into the soil
- Peanut butter is an excellent source of niacin, and a good source of vitamin E and magnesium
- Peanuts do not contain cholesterol and are low in saturated fat
- Peanut butter accounts for half of all peanuts eaten in the U.S.
- It takes about 540 peanuts to make a 12-ounce jar of peanut butter
- There are enough peanuts in one acre to make 35,000 peanut butter and jelly sandwiches
- The average person will eat almost 3,000 peanut butter and jelly sandwiches in their lifetime
- Women and children prefer creamy peanut butter, while most men opt for chunky
- Peanut allergies affect just 0.6% of the U.S. population



Local peanut farmers, Kirk and Gene Brock during the first stage of peanut harvest - digging. The plants are carefully pulled from the ground where they are exposed to sun for drying. Once dry enough, they will use a peanut combine to separate the pods from the vines!



RESCHEDULED
Produce Safety Alliance
(PSA) Grower Training!
Jan. 19, 2022 8AM-5PM

The PSA Grower Training originally scheduled for November 10, 2021 has been rescheduled to January 19, 2022.

Fruit and vegetable growers and others interested in learning about produce safety, the Food Safety Modernization Act (FSMA) Produce Safety Rule, Good Agricultural Practices (GAPs), and co-management of natural resources and food safety are encouraged to attend. **The PSA Grower Training Course is one way to satisfy the FSMA Produce Safety Rule requirement.**

The cost to attend is \$40 and includes training materials, lunch, refreshments, and certificate of attendance issued by AFDO.

Please register at:
<https://psa111021.eventbrite.com>

Family & Consumer Sciences News

Pineapple Turkey Centerpiece

Take your Thanksgiving to the next level with creative ideas that will decorate your table for the Holiday. Children will have a fun time helping with the adorable centerpiece as well. You can also add the crafts that are made in school to the table during the holiday.

- Place the pineapple on the platter, cut off any damaged leaves on the crown
- Cut bamboo stick in half, insert both halves in the bottom of the pineapple, leave enough bamboo so the squash can attach to the pineapple
- Attach the squash to the pineapple, take two cloves and make eyes on the squash
- Take flowers and design your turkey
- You can use a bamboo stick to make holes where the flower need to go on the pineapple
- Toothpicks can help attach the flowers to the pineapple

1 Pineapple
1 Yellow Squash
Fall flowers
Oval Platter
2 Whole Cloves
1 pack of toothpicks
1 pack of Bamboo
Skewers
Scissors

Items Needed



After the holiday, cut off the crown of the pineapple. You can plant the crown 3 to 4 inches deep in a container that is well-drained. Also, you need to use good potting soil. Find more information at UF/IFAS publication, "Pineapple Growing in the Florida Home Landscape."

Peanut Butter Challenge

It's fall and peanut harvest is here which means that it's time to spread the cheer (and protein) with the annual UF/IFAS Peanut Butter Challenge! The Extension Office would like to invite you to participate in this year's Peanut Butter Donation Challenge! The challenge will start **Friday, October 1st and end Wednesday, November 24th.**

Find the peanut butter challenge drop-off location closest to you:

The First Bank
200 East
Washington St.
Monticello, FL

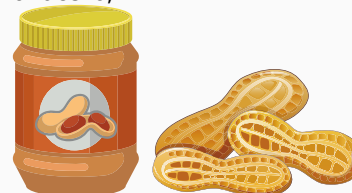
**Jefferson County
Library**
375 S. Water St.
Monticello, FL

Capital City Bank
800 S. Jefferson St.
Monticello, FL

ECB Publishing
180 West
Washington St.
Monticello, FL

**Jefferson County
Farm Bureau**
105 W. Anderson St.

Monticello, FL
**UF/ IFAS Jefferson
County Extension
Office**
2729 W. Washington
Hwy
Monticello, FL



Living Well Wednesdays

A zoom-based program discussing the topic of quick and healthy meals.

Please contact Gretchen Thornton for link to this event.

Time: 12:30 pm -1:30pm

Date: November 10th, 17th, and 24th



Safety Through the Seasons!

November 23rd , 2021 |

3:00pm -4:00pm

Join us on our [Facebook page](#) for a Facebook Live event to learn more about Thanksgiving Holiday Safety for both your kids and pets!



FAMU Extension News

2021 Fall Looking Forward How can you get involved with FAMU 4-H this fall?

NATIONAL 4-H STEM CHALLENGE— GALACTIC QUEST

Kids learn foundational STEM skills while they wrestle with the same questions as today's top aerospace scientists and engineers!

Activities can be done all at once or individually, making it great for classrooms, afterschool programs, clubs, parents, and more.



FAMU Tech Changemakers

We Want YOU!

Tech Changemakers is a program designed to pair teenagers (who are very tech literate) with older persons in the community to teach them valuable tech skills to make them more employable and confident in the ever-growing/changing workplace.

FAMU Tech Changemakers is recruiting motivated teenagers who are interested in helping close the gap of the digital divide.



2022 In –Person 4-H National Summits in Washington D.C

PLEASE SEE BELOW FOR THE DIFFERENT SUMMITS BEING OFFERED THIS UPCOMING YEAR AND THE DATES.

- **Healthy Living Summit**
 - February 10th–13th
- **Agri-Science Summit**
 - March 10th–13th
- **Citizenship Washington Focus**
 - June 5th–July 16th (week long programs)
- **Leadership Washington Focus**
 - July 18th–July 22nd
- **STEM Summit**
 - September 15th–18th

Agri-STEM

Agri-STEM is a program that teaches students about multiple areas of agriculture that uses science, technology, engineering, and mathematics in their everyday practices.

The Areas of Agriculture Include:

- Natural Resources
- Veterinary Technology/ Animal Science
- Biological & Agricultural Systems Engineering
- Food Science
- Entomology

NOVEMBER

Mon	Tues	Wed	Thurs	Fri	Sat / Sun
1 <ul style="list-style-type: none"> Ag Judging Class North Florida Fair Booth set up Last day to buy 4-H Wristbands 	2 <p>North Florida Fair Booth set up</p>	3	4 <ul style="list-style-type: none"> 3rd Grade School Club Ag Judging Class 	5	6
8 <p>Ag Judging Class</p>	9 <p>North Florida Fair</p>	10 <ul style="list-style-type: none"> 4th Grade School Club Living Well Wednesdays Ag Judging Class 	11 <p>VETERAN'S DAY OFFICE CLOSED</p>	12	13 <ul style="list-style-type: none"> 4-H Day at the North Florida Fair Ag Judging Competition 4-H STEM Challenge
15 <p>North Florida Fair Booth take down</p> <p>Teen Council Meeting</p>	16 <p>North Florida Fair Booth take down</p>	17 <ul style="list-style-type: none"> Living Well Wednesdays 5th Grade School Club 	18	19	20
22	23	24 <ul style="list-style-type: none"> Safety through the seasons! Living Well Wednesdays 	25 <p>End of peanut butter challenge</p>	26 <p>Thanksgiving!</p>	27
29	30	31			

Upcoming December Events

Deadline to buy 4-H Wristbands for the North Florida Fair- 1st
 North Florida Fair Booth set up - 1st and 2nd
 3rd Grade School Club - 4th
 North Florida Fair - 5th-14th
 4th Grade School Club - 10th
 Living Well Wednesdays- 10th,17th, and 24th
 Veteran's Day Office Closed- 11th
 Ag Judging Course Classes - 1st, 4th, 8th, and 10th
 4-H Day at the North Florida Fair - 13th
 Ag Judging Competition at the North Florida Fair -13th
 4-H STEM Challenge at the North Florida Fair- 13th
 North Florida Fair Booth Take-down - 14th, 15th and 16th
 Teen Council Meeting -15th
 5th Grade School Club - 17th
 Safety Through the Seasons - 23rd
 End of The Peanut Butter Challenge ends - 24th
 Thanksgiving! - 25th

4th Grade School Club - 8th
 3rd Grade School Club -9th
 5th Grade School Club - 15th
 Safety Through the Seasons - 23rd
 Christmas Eve!- 24th
 Christmas Day! - 25th

Meet the Staff!



John G. Lilly, Sr.
Extension Director/ 4-H Agent
jgl@ufl.edu



Danielle Sprague
Agriculture & Natural Resources Agent
dsprague@ufl.edu



Gretchen Thornton
Family & Consumer Sciences
Agent
gthornton1@ufl.edu



Emily Nolen
FAMU Extension
Program Assistant
emily.nolen@fam.u.edu



Ana Portillo
Administrative Assistant
Ana.portillo@ufl.edu



Bryan Danford
4-H Program Assistant
bryan.danford@ufl.edu



Dawanda Skipworth
Office Secretary
dskipworth@ufl.edu