



The Mayo Clover Leaf



August 2025 Lafayette County Extension, Ag and 4-H News Vol 7 Num 8

Up-Coming Events

Monday August 11, Lafayette County Schools begin 2025-26 school year.

Tuesday August 19, Peanut Field Day, 9:00AM-1:00PM
NFREC Suwannee Valley, Live Oak

Wednesday August 27, 4-H Senior Commodity Pickup 1:00-4::00

Tuesday September 2, 4-H Community Club, 3:00 PM 4-H Classroom

Tuesday September 9, 4-H Cooking Club, 3:00pm 4-H Classroom

Tuesday September 16, Anglers Club meeting, 3:00 PM at WC & Jana Hart

Tuesday September 23, Archery club, 3:00 pm 4-H Classroom.

UGA Tobacco Tour Makes its Annual Stop in Lafayette County

Emily Beach

On Tuesday, June 17 tobacco growers and industry stakeholders met at Lord Farms to visit the variety trial that is located there. Dr. J Micheal Moore, Professor and Extension Agronomist for Tobacco at UGA, coordinates the trial every year and then conducts a tour of the trials in Georgia along with Jackson Lord's trial. The discussion centers around selecting varieties that are resistant to diseases like black shank, are appropriate for our soil type and climate, and produce high yields and quality. This work is important as resistance builds up very quickly in plants which can have devastating effects on a crop. The next stop on the tour was at the farm of Scott Prine. Scott is recognized as being one of the highest yielding producers in the southeast so participants were eager to hear from him and learn from his experiences. We are thankful to have producers who continue to farm our land even though conditions are not always ideal.



Above: Scott Prine discusses the variety of tobacco he chose this year.



Above: Dr. J. Michael Moore with the Lord family explaining varieties that were chosen for this year's trial.

New 4-H Year Kicks Off in September with Exciting Club Opportunities

Shawn Jackson

As summer winds down, it's time to start planning for an exciting new year of 4-H! Beginning in September, local youth will once again have the opportunity to explore hands-on learning through a variety of 4-H clubs and activities.

Getting Started

Parents or guardians are encouraged to stop by the Extension Office to complete the required registration forms. The annual membership fee is \$20 per child. Completing the registration early ensures your child will be ready to participate in the first club meetings of the year.

Weekly Club Schedule

4-H clubs will meet every Tuesday after school at the Extension Office unless otherwise noted. Here's what to expect each week:

First Tuesday: 4-H Community Club This general-interest club welcomes all 4-H members, including Cloverbuds (ages 6–7). Activities include gardening and hands-on art projects that help younger members explore their creativity while learning about nature and teamwork.

Second Tuesday: Cooking Club Youth with an interest in culinary skills are invited to join the 4-H Cooking Club. Members will learn kitchen safety, basic food preparation, nutrition, and fun recipes they can try at home.

Third Tuesday: Anglers Club Outdoors loving youth can participate in the Anglers Club, held at local lakes and private ponds. Please note: students cannot ride the bus to this club. A parent or guardian must provide transportation.

Fourth Tuesday: Archery Club For youth interested in learning archery skills and safety, this club offers an engaging introduction to the sport. Equipment is provided, and trained volunteers help guide members through proper technique and form.

Choosing the Right Club

Each club is designed to serve youth who have a genuine interest in the specific topic. Families are asked to carefully consider their child's interests and commitment before signing up for a club. This helps ensure a positive and rewarding experience for everyone involved.

Important Note for Bus Riders

If your child plans to ride the school bus to the Extension Office for club meetings, **please call the office in advance** so staff will know to expect your child and can ensure their safety.

Throughout the year, there will also be **Spin Clubs**—short-term clubs that focus on teaching specific skills, career readiness, or preparation for competitive 4-H events. These clubs may be limited to older youth and offer a great way for youth to try something new or dive deeper into an area of interest.

Whether your child loves cooking, fishing, gardening, or trying new things, 4-H has something to offer. Be sure to register soon and get ready for a year of fun, learning, and adventure!

New World Screwworm in Florida: What You Need to Know

Emily Beach

A case of New World screwworm was reported in early July approximately 370 miles south of the U.S. border in Mexico, prompting the closure of livestock trade through southern ports of entry. This measure is a proactive step to help protect U.S. livestock herds from potential exposure.

The New World screwworm (*Cochliomyia hominivorax*) is the larval stage of a parasitic fly that targets warm-blooded animals—including livestock, wildlife, pets, and, in rare cases, humans. Unlike typical maggots that feed on decaying tissue, screwworm larvae invade and consume healthy living flesh, causing painful wounds that can lead to severe infection or death if left untreated.

These larvae are distinguishable by their screw-like appearance and aggressive feeding behavior. A female screwworm fly lays eggs along the edges of wounds, and within hours, the larvae hatch and begin to burrow into the tissue.

Florida successfully eradicated screwworm in the 1960s through a sterile insect release program, but isolated outbreaks have occurred since—most recently in the Florida Keys in 2016, where the parasite devastated wildlife populations, including the endangered Key deer.

New screwworm detections carry serious economic, environmental, and public health implications:

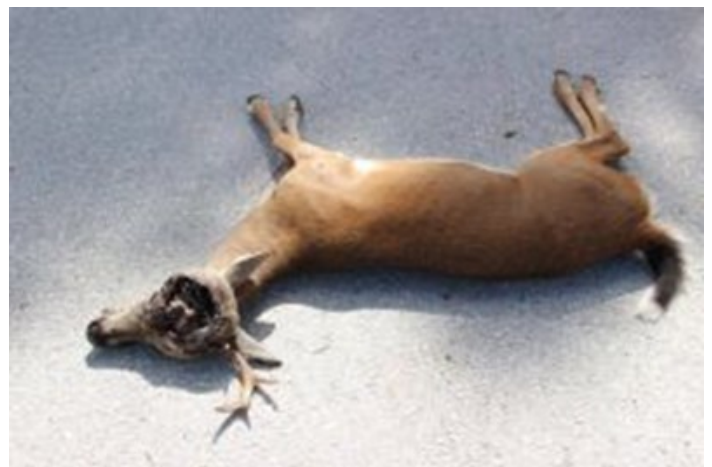
- For livestock and agriculture: Infected animals may suffer extensive tissue damage, weight loss, or death. Cattle, goats, horses, and pets are particularly at risk.
- For wildlife: Native species can be severely affected. The 2016 outbreak led to a dramatic decline in Key deer numbers.

For Florida's economy: Potential losses in the livestock and tourism industries may result from quarantines, treatment costs, and reduced consumer confidence.

The Florida Department of Agriculture and Consumer Services (FDACS), along with the USDA and University of Florida IFAS Extension, actively monitors for screwworm outbreaks. In the event of detection, officials may:

- Quarantine affected areas
- Treat or euthanize infected animals
- Release sterile flies to interrupt the breeding cycle
- Educate veterinarians and the public on signs, symptoms, and prevention

A photo to the right from 2016 shows a deer in the Florida Keys that died from an outbreak of Screw worms.



Weather and Agriculture Report

Emily Beach

The rainfall that we have been experiencing this month has been very typical for this time of year. Unfortunately, we are still considered to be in a deficit due to the extreme heat that we have had. Although the rain has totaled in a typical way, not many events have been able to provide the relief needed for the many acres of peanuts, corn, tobacco and cotton we have in the county as well as blackberries, grasses for grazing and hay, and the home landscape.

August is the month for pinching back poinsettias and mums to allow for buds to form for winter bloom.

It's also time to start thinking about what you will plant in your fall garden, see the article in this edition about Fall Gardening for more information. Due to the increase in rain and cloud cover, carefully monitor your lawns for signs of disease. To decrease risks and stress, use a sharp mower blade and only remove a third of the grass blade.

Fall Gardening Reminders

If you are planning to plant a fall garden, now is the time to get those seeds and/or transplants in the ground! There are several factors to consider when preparing a fall garden for cold weather crops:

1. **Site-** your garden needs to be in a well-drained area that gets at least six hours of sunlight daily. If you have space, you should rotate the land that you plant your garden on to help control soil diseases and other pests.
2. **Plan-** Decide what vegetables you want to grow and make sure you have access to seeds/transplants. There is a long list of vegetables that can be grown during the cooler season. Some popular options for our area are beans, beets, broccoli, brussels sprouts, cabbage, carrots, cauliflower, celery, collards, cucumbers, eggplant, kale, mustard, green onions, peppers, radish, spinach, winter squash, tomatoes, and turnips are all great options for our area during the fall season.
3. **Soil preparation-** It is worthwhile to amend the soil with organic matter or compost before planting to improve soil health.
4. **Irrigation-** Young plants need frequent but light irrigation whereas maturing crops need more water but less often. To ensure ample amounts of water when rainfall is scarce an irrigation plan needs to be in place before you plant.
5. **Fertilizing-** You can have your soil tested to determine nutrient levels but fertilizer grades such as 10-10-10 are typically used in Florida gardens. Use amounts recommended by the fertilizer label and broadcast fertilizer over the plot just before planting and then 2-3 more times during the life of your garden.
6. **Pest management-** Categorizing pests is very difficult because there is a wide array of types of pests but whatever the type, pests need to be dealt with to ensure the health of your garden. There are many non-pesticide approaches such as controlling weeds, tilling your area, scouting your garden and removing insects or diseased leaves. When pesticides are needed, be sure to read labels to ensure proper applications and efficacy.

Gardening offers fresh air, sunshine, exercise, enjoyment, economic savings and many other benefits! If you have never planted a garden before start small and you can add more over time! If you have any questions about gardening or anything else related to agriculture, natural resources, or youth development please feel free to reach out by emailing elbeach@ufl.edu or calling the office at (386)294-1279.

July Rainfall Totals (in)			
	2025	2024	2023
Cooks Hammock	9.46	6.74	8.38
Mallory Swamp	5.22	7.9	5.16
Midway Tower	4.14	8.51	6.83
FAWN Station	6.21	8.54	7.11
FSWN LHS	6.90		

Join The Farm Judging Team!

The Lafayette County Farm Judging will be held October 24! This is a contest where participants evaluate commodities like corn, tobacco, peanuts, hay, silage, beef, swine, dairy, and poultry. They also have the option to participate in a farm manager contest to identify agricultural tools, insects, feedstuffs, and weeds as well as take a written portion to put their general agricultural knowledge skills to the test. Any Lafayette 4-H member interested in participating in this contest needs to contact us by September 5.

4-H Launches New Greenhouse Project

Shawn Jackson

Lafayette 4-H is excited to announce a brand-new project coming this year—a greenhouse! Members will help build and care for the greenhouse, which will be used to grow and protect plants during the winter months.

The plants grown in the greenhouse will be used for a **spring fundraiser**, helping support local 4-H programs and activities. This project will teach youth important skills in gardening, responsibility, and teamwork.

Construction of the greenhouse will begin soon, and members will have the chance to take part every step of the way.

If you would like to **donate to this project**, please contact the Lafayette County Extension Office.

Photo right: Ferns and Coleus youth are growing.





2025 REGIONAL PEANUT FIELD DAY

at NFREC-SV

Use this QR Code to register:



CEU & CCA credits applied for!

TUESDAY AUGUST 19, 2025

9:00AM-1:00PM

NFREC-SV
8202 County Road 417
Live Oak, FL 32060

You won't want to miss the opportunity to hear about and visit the research trials going on at NFREC-SV! You will hear from experts about variety selection, fungicide and nematicide efficacy programs, and chelated iron application information. After the tours you will have the opportunity to visit with vendors and then hear about the market outlook and budgeting for this season. There will be an optional core training at 1:10pm for an opportunity to earn 1 core CEU.

Register by August 12, 2025 at:

[2025 Regional Peanut Field Day Tickets, Tue. Aug 19, 2025 at 9:00 AM | Eventbrite](#)

An Equal Opportunity Institution.

2025 UF/IFAS EXTENSION

LIVESTOCK & FORAGES

Field day

OCTOBER 21ST
8:30AM - 2PM

@the **SANTA FE RIVER RANCH**
in Alachua, FL

Highlights

- Drone Herbicide Application Demo
- Cattle Tail Bleeding and On-Farm Preg-Testing
- Mineral Supplementation
- Invasive Weeds

\$20 to pre-register
\$40 at the door
includes lunch!
sponsored by Farm Credit

Scan with your phone or head to:
<https://LFADMISSION.eventbrite.com>



Contact Lizzie Whitehead with any questions.
liz.whitehead@ufl.edu
904-966-6224

An Equal Opportunity Institution.

Lafayette County Wraps Up Summer Strengthening Families Program

Shawn Jackson

Lafayette County is wrapping up its summer Strengthening Families Program (SFP 10-14) after seven fun and meaningful evenings. Five local families took part in this valuable program, which focuses on building strong family relationships, improving communication, and teaching important life skills.

Each night, families enjoyed delicious meals together before beginning the sessions. The program was led by a team of trained facilitators: Darby Peason and Beverly Fountain worked with the youth, while Shawn Jackson led sessions with parents. After their separate lessons, families came together for group activities and shared learning.

The program wasn't just educational, it was also fun! Families took part in games, hands-on projects, and bonding activities. Youth even had the opportunity to enjoy an evening of bowling. Some of the favorite moments included taking home door prizes and enjoying homemade ice cream during the final night.

The Strengthening Families Program is designed for parents and youth ages 10–14 and brings together 5–10 families for seven two-hour sessions, followed by a graduation. The program helps families build stronger bonds by practicing communication skills and problem-solving through engaging lessons and family projects.

SFP 10-14 is used across all 50 states and in more than 18 countries. Lafayette County is proud to offer this important program and looks forward to continuing its efforts to support families in the community. If you are interested in participating in the upcoming fall SFP 10-14, please contact the Lafayette County Extension office and ask to be added to the list. Spots are limited.



Marine Biology Camp Explores Water and Wildlife

Shawn Jackson

The final 4-H camp of the summer was The Marine Biology Camp. This special camp combined youth from Union and Lafayette Counties where youth learned about water quality, marine life, and protecting local natural resources. The focus was on the Suwannee River and its tributaries, with lessons on why clean water is important for both recreation and drinking water from the aquifer.

Campers visited Blue Springs, Troy Springs, and Ruth Springs, where guest speakers shared interesting facts about each location. Lafayette High School science teacher Cameron Taylor spoke at blue springs. She explained the importance of having clean creeks and runoffs that feed the river. Troy Roberts met the 4-Hers at Troy Springs where he discussed springs, how they are classified and the number of springs along the Suwannee River. Campers also learned about the history and ecology of the springs and how to help keep them clean.

A special trip to the UF/IFAS Nature Coast Biological Station in Cedar Key gave campers a chance to study real water samples from the Gulf. They tested water quality, identified tiny sea creatures, and even dissected fish to learn about fish anatomy and how to tell male from female. It was a hands-on science experience that helped campers understand how inland waters connect to the ocean and why protecting them matters.



Above L-R: Union and Lafayette County 4-H at Troy Springs with Troy Roberts from SRWMD. Cameron Taylor speaks to youth from both counties at Lafayette County Blue Springs State Park.

Far left: 4-H taking a break from learning at Blue Springs State Park.

Left: 4-H members enjoying the cool, clear water at Blue Springs State park.

2026 SVYLSS COMPLETE SCHEDULE OF EVENTS

March 23-27, 2026

Online Registration Deadline	Sunday; November 16, 2025 at 10:00 pm
Entry Fee Deadline	Sunday; November 16, 2025 at 10:00 pm
Initial Tag-In/Weigh-In	Saturday; November 22, 2025 at 8:30 am
MANDATORY Parent/Exhibitor Meeting	DATES TBA but there will be 2 options
Record Book Due	March 16, 2026 by 5:00 pm (at Extension Office) ***Record Books only apply to Market Animals***
Swine Weigh-In	March 23, 2026 at 7:00-10:00 am
Cattle & Sheep Weigh-In	March 23, 2026 at 12:00-2:00 pm
Swine Showmanship	March 23, 2026 at 6:30 pm
Swine Show	March 24, 2026 at 6:30 pm
Steer and Heifer Show	March 25, 2026 at 6:30 pm
Sheep Show (Breeding & Market)	March 26, 2026 at 6:30 pm
Sale	March 27, 2026 at 9:00 am ***Lunch for Buyers will be provided during the sale at the fairgrounds***

Remember to start prepping for hurricane season now by checking trees on your property for damaged or weak branches!



Lafayette 4-H Senior Commodities



<u>Day</u>	Date	Time
<u>Wednesday</u>	August 27, 2025	1:00pm – 4:00pm
<u>Wednesday</u>	September 24, 2025	1:00pm – 4:00pm
<u>Wednesday</u>	October 29, 2025	1:00pm – 4:00pm
<u>Wednesday</u>	November 19, 2025	1:00pm – 4:00pm
<u>Wednesday</u>	December 17, 2025	1:00pm – 4:00pm

Program for Lafayette County seniors 60+ Call 386-294-1279 for registration and details.

IFAS Extension is an equal opportunity Institution. We encourage all races, religions and ethnicities to attend our summer programs. There are scholarships available for minority and underprivileged children. Please contact our office for more information.

Like us on Facebook

For daily updates on local IFAS, 4-H News and events, visit and “like” our FB Page:
UF IFAS Extension Lafayette County 4-H.