



Up-Coming Events

Tuesday September 2, 4-H Community Club, 3:00 PM 4-H Classroom

Friday September 5, Deadline to join 2025 4-H Farm Judging.

Tuesday September 9, 4-H Archer Club 4-H Classroom

Tuesday September 17, Anglers Club meeting, 3:00 PM at WC & Jana Hart

Friday September 19, 4-H members in LHS Homecoming parade. Meet at line-up, 1:00

Monday September 22, Meet with UF CALS recruiter at Extension 4-H Classroom. 6:00 PM

Tuesday **September 23,** Archery club, 4-H Classroom, 3:00

Tuesday September 23, Mayo Chick-Chain Show, 4-H Classroom, 6:00

Wednesday September 24, 4-H Senior Commodity Pickup 1:00-4:00

Thursday, September 25, Quad County Chic-Chain, Madison County Livestock arena, 5:00

Saturday October 11. Mayo Pioneer Day, Parade line up 10:00,

September Weather Report

Emily Beach

August is a testament that there can be a varying amount of rainfall amounts in our very large county. Harvest season is beginning so please continue to be patient with farm equipment on the highways- they are working to feed our nation and deserve appreciation, not frustration for a slower ride to your destination.

September is the month for planting strawberries through mid-October and the time to get the fall garden established. Fall vegetables include arugula, beans, beets, broccoli, Brussell sprouts, cabbage, carrots, cauliflower, celery, collards, kale, lettuce, mustard, onions, radish, spinach, squash, and turnips. Be sure to go by the Lafayette County Library and check out what seeds they have available.

This is a good time to separate any bulbs or perennials that have grown too large. Be sure to add plenty of fresh organic matter to the new planting areas and ensure they have an ample amount of water.

This is the last month that you should apply fertilizer to lawns, consider using a fertilizer with a slow-release Nitrogen component to optimize on those benefits for a longer period of time.

August Rainfall Totals (in)			
	2025	2024	2023
Cooks Hammock	6.41	9.88	6.36
Mallory Swamp	3.53	11.35	5.62
Midway Tower	7.07	15.94	6.57
FAWN Station	9.29	15.32	12.33
FSWN LHS	5.37		

Fall Food Plots

Fall food plots are an excellent way to provide nutrition for deer, turkey, and other game species in North Florida. When properly planned and managed, they improve wildlife health, attract game for viewing or hunting, and enhance habitat diversity. The key to success is good site preparation, appropriate plant selection, and ongoing maintenance.

Beach, Emily. UF/IFAS Lafayette County. Agriculture and Natural Resources Agent.

Site Selection

- Choose a location that receives at least 6 hours of direct sunlight daily.
- Avoid low, wet areas.
- Plots should be near woods/brush but far enough out to encourage daytime use.
- ½-2 acres is a common size.

Soil testing is critical!

- Test the soil for nutrient status 6 months before planting to address needs.
- Most forages grow best with a pH of 5.8 -6.5. Apply lime if pH is too low.

Site Preparation

- Control weeds before planting.
- Disc or till to loosen the top 4 -6 inches of soil, incorporate lime and/or fertilizer, and then create a smooth, firm seedbed.

***For more information see EDIS Publication #SS-AGR-28.

Cool Season Plant Selection

- Grasses: Oats, rye, and triticale.
- Legumes: Crimson, white, and red clover.
- Brassicas: Rape, kale, forage turnips.
- A mixture of these plants is highly recommended as they extend the availability of quality forage, balance nutrition, and reduce risk if one species is affected.

Planting Techniques

- Plant larger seeds first, then broadcast small seeds and lightly drag or cultipack to cover.
- See table below.

Management

- Fertilize based on soil test recommendations.
- Scout during the growing season for weeds and pests.
- If pressure is expected to be high, consider planting larger plots.

Species	Planting Window	Seeding Rate (per acre)	Planting Depth
Oats	Sept 15 – Nov 15	100–120 lbs	1–2 in
Rye (grain)	Oct 15 – Nov 15	90–120 lbs	1–2 in
Triticale	Oct 15 – Nov 15	90–120 lbs	1–2 in
Crimson Clover	Oct 1 – Nov 15	20–25 lbs	¼–½ in
Red Clover	Oct 1 – Nov 15	10–15 lbs	¼–½ in
White Clover	Oct 1 – Nov 15	3–5 lbs	0– ¼ in
Rape / Kale / Turnips	Oct 1 – Nov 15	5–6 lbs	¼–½ in
Mixed Plot Example	Oct 15 – Nov 15	50 lbs oats + 50 lbs triticale + 15 lbs crimson clover + 5 lbs white clover + 5 lbs turnip.	Depths vary (see above)

Lafayette County Extension PROSPER Team Has Summer Meeting

The Lafayette County PROSPER Team met on August 29 to review summer activities and prepare for the fall. Members received updates on the *Strengthening Families Program (SFP 10-14)* held during the summer and discussed the upcoming launch of the *Botvin Life Skills* program with 6th grade students in September.

During the meeting, attendees enjoyed a lunch of fried chicken wings, coleslaw, roasted red potatoes, salad, rolls, and peach cobbler with ice cream.

The PROSPER Team specifically supports the *Botvin Life Skills* and *Strengthening Families Program 10-14*. PROSPER grants are designed to help communities implement programs that provide long-term benefits and eventually become self-sustaining.

If you are interested in serving on the PROSPER committee, please contact Shawn Jackson at the UF/IFAS Extension Office.



**Proud Sponsor of
Lafayette 4-H Horticulture
and
Greenhouse Program!**



4479 169th Road Live Oak, Florida

2025 Chick-Chain Shows

Mayo Show:

Tuesday, September 23, 6:00
Extension 4-H Classroom

Quad County Show:

Tuesday, September 25, 5:00
Madison County Livestock Arena



Tiny House Raffle Tickets Available Now



See a 4-H member to make a 5 dollar donation and get a ticket. Drawing Saturday October 11, Pioneer Day!

New 4-H Year Kicks Off in September with Exciting Club Opportunities

Getting Started

Parents or guardians are encouraged to stop by the Extension Office to complete the required registration forms. The annual membership fee is \$20 per child. Completing the registration early ensures your child will be ready to participate in the first club meetings of the year.

Weekly Club Schedule

4-H clubs will meet every Tuesday after school at the Extension Office unless otherwise noted. Here's what to expect each week:

First Tuesday: 4-H Community Club This general-interest club welcomes all 4-H members, including Cloverbuds (ages 6–7). Activities include gardening and hands-on art projects that help younger members explore their creativity while learning about nature and teamwork.

Second Tuesday: Cooking Club Youth with an interest in culinary skills are invited to join the 4-H Cooking Club. Members will learn kitchen safety, basic food preparation, nutrition, and fun recipes they can try at home.

Third Tuesday: Anglers Club Out doors loving youth can participate in the Anglers Club, held at local lakes and private ponds. Please note: students cannot ride the bus to this club. A parent or guardian must provide transportation.

Fourth Tuesday: Archery Club For youth interested in learning archery skills and safety, this club offers an engaging introduction to the sport. Equipment is provided, and trained volunteers help guide members through proper technique and form.

Choosing the Right Club

Each club is designed to serve youth who have a genuine interest in the specific topic. Families are asked to carefully consider their child's interests and commitment before signing up for a club. This helps ensure a positive and rewarding experience for everyone involved.

Important Note for Bus Riders

If your child plans to ride the school bus to the Extension Office for club meetings, **please call the office in advance** so staff will know to expect your child and can ensure their safety.

Throughout the year, there will also be **Spin Clubs**—short-term clubs that focus on teaching specific skills, career readiness, or preparation for competitive 4-H events. These clubs may be limited to older youth and offer a great way for youth to try something new or dive deeper into an area of interest.

Whether your child loves cooking, fishing, gardening, or trying new things, 4-H has something to offer. Be sure to register soon and get ready for a year of fun, learning, and adventure!

Lafayette County PROSPER Team Meets to Plan Upcoming Programs

Shawn Jackson

The Lafayette County PROSPER Team met on August 29 to review summer activities and prepare for the fall. Members received updates on the *Strengthening Families Program (SFP 10-14)* held during the summer and discussed the upcoming launch of the *Botvin Life Skills* program with 6th grade students in September.

During the meeting, attendees enjoyed a lunch of fried chicken wings, coleslaw, roasted red potatoes, salad, rolls, and peach cobbler with ice cream.

The PROSPER Team specifically supports the *Botvin Life Skills* and *Strengthening Families Program 10-14*. PROSPER grants are designed to help communities implement programs that provide long-term benefits and eventually become self-sustaining.

If you are interested in serving on the PROSPER committee, please contact Shawn Jackson at the UF/IFAS Extension Office

Join The Farm Judging Team!

The Lafayette County Farm Judging will be held November 7! This is a contest where participants evaluate commodities like corn, tobacco, peanuts, hay, silage, beef, swine, dairy, and poultry. They also have the option to participate in a farm manager contest to identify agricultural tools, insects, feedstuffs, and weeds as well as take a written portion to put their general agricultural knowledge skills to the test. Any Lafayette 4-H member interested in participating in this contest needs to contact us by September 5.

2025 UF/IFAS EXTENSION

LIVESTOCK & FORAGES

Field day

OCTOBER 21ST
8:30AM - 2PM

@the **SANTA FE RIVER RANCH**
in Alachua, FL

Highlights

- Drone Herbicide Application Demo
- Cattle Tail Bleeding and On-Farm Preg-Testing
- Mineral Supplementation
- Invasive Weeds

\$20 to pre-register
\$40 at the door
includes lunch!
sponsored by Farm Credit

Scan with your phone or head to:
<https://LFADMISSION.eventbrite.com>

Contact Lizzie Whitehead with any questions.
liz.whitehead@ufl.edu
904-966-6224

UF IFAS Extension
UNIVERSITY of FLORIDA
An Equal Opportunity Institution.

NORTH FLORIDA LIVESTOCK AGENTS GROUP

Florida Peanuts: From the Ground Up

Emily Beach

When most people think of peanuts, they picture jars of peanut butter or a bag of roasted snacks. But behind these familiar foods is an important Florida crop with a fascinating life cycle and a major economic impact. If you are riding around the county, you probably have gone by a field of peanuts as there are usually around 4,000 acres grown in Lafayette County.



How Peanuts Grow

Unlike tree nuts, peanuts are part of the **legume family**. They are planted in spring when soils warm, and the plants grow close to the ground with leafy stems. Small yellow flowers bloom above ground, but here's the twist—after pollination, the flower stalk (called a “peg”) bends down and pushes into the soil, where the peanut pods actually form underground. By early fall, farmers dig the plants up, dry them in the field, and then separate the peanuts from the vines. This unique growing process is why peanuts are often called “groundnuts.”

Uses of Peanuts

Peanuts are prized not only for their flavor but also for their versatility.

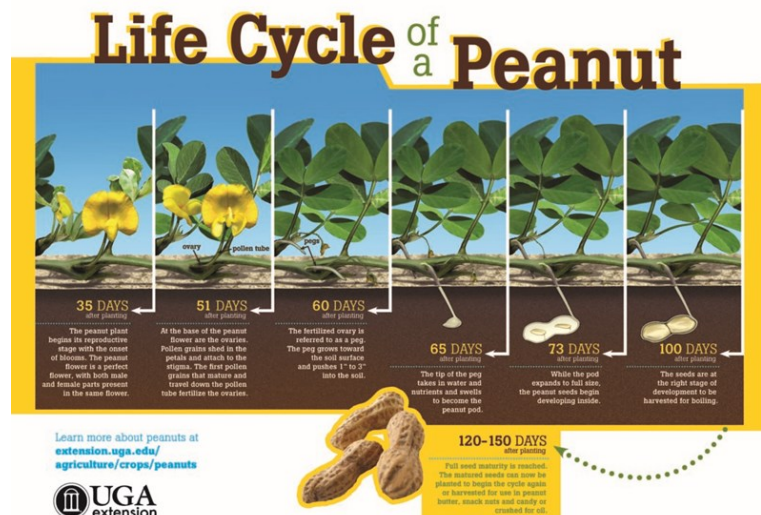
- **Food products:** Peanut butter, candy, roasted nuts, and the Southern favorite—boiled peanuts.
- **Cooking oil:** Peanut oil is valued for its high smoke point and mild flavor.
- **Animal feed and byproducts:** Peanut vines, shells, and meal are useful for livestock.

Industrial uses: Research has found hundreds of applications, from biodiesel to biodegradable plastics.

Economic Impact in Florida

Florida ranks **third in U.S. peanut production**, behind Georgia and Alabama. Peanuts are grown primarily in the Panhandle and here in North Florida, where sandy soils and warm weather provide ideal conditions. Peanuts contribute **hundreds of millions of dollars annually** to Florida's agricultural economy. They are also an important part of crop rotation, helping improve soil fertility by adding nitrogen naturally.

With consumer demand for peanut products remaining strong, Florida growers continue to play a vital role in supplying both domestic and export markets. Beyond the farm, the peanut industry supports jobs in processing, transportation, and retail—making this humble legume a powerhouse for rural economies.



2026 SVYLSS COMPLETE SCHEDULE OF EVENTS

March 23-27, 2026

Online Registration Deadline	Sunday, November 16, 2025 at 10:00 pm
Entry Fee Deadline	Sunday, November 16, 2025 at 10:00 pm
Initial Tag-In/Weigh-In	Saturday, November 22, 2025 at 8:30 am
MANDATORY Parent/Exhibitor Meeting	DATES TBA but there will be 2 options
Record Book Due	March 16, 2026 by 5:00 pm (at Extension Office) ***Record Books only apply to Market Animals***
Swine Weigh-In	March 23, 2026 at 7:00-10:00 am
Cattle & Sheep Weigh-In	March 23, 2026 at 12:00-2:00 pm
Swine Showmanship	March 23, 2026 at 6:30 pm
Swine Show	March 24, 2026 at 6:30 pm
Steer and Heifer Show	March 25, 2026 at 6:30 pm
Sheep Show (Breeding & Market)	March 26, 2026 at 6:30 pm
Sale	March 27, 2026 at 9:00 am ***Lunch for Buyers will be provided during the sale at the fairgrounds***

Remember to start prepping for hurricane season now by checking trees on your property for damaged or weak branches!



Lafayette 4-H Senior Commodities



<u>Day</u>	Date	Time
<u>Wednesday</u>	September 24, 2025	1:00pm – 4:00pm
<u>Wednesday</u>	October 29, 2025	1:00pm – 4:00pm
<u>Wednesday</u>	November 19, 2025	1:00pm – 4:00pm
<u>Wednesday</u>	December 17, 2025	1:00pm – 4:00pm

Program for Lafayette County seniors 60+ Call 386-294-1279 for registration and details.

IFAS Extension is an equal opportunity Institution. We encourage all races, religions and ethnicities to attend our summer programs. There are scholarships available for minority and underprivileged children. Please contact our office for more information.

Like us on Facebook

For daily updates on local IFAS, 4-H News and events, visit and “like” our FB Page:
UF IFAS Extension Lafayette County 4-H.