

# Florida Butterflies

Page 1 of 10



FAMILY

Brush-footed Butterflies (Family Nymphalidae)

SPECIES

Zebra Longwing (Heliconius charithonia)

LARVAL HOST PLANT

Vines—(Passifloraceae) including Purple Passionflower (Passiflora incarnata) and Corkystem Passionflower (Passiflora suberosa)

ADULT FOOD

Flower nectar and pollen

HABITATS

open woodlands, forest margins, gardens, parks

(Lake County = Region 3)

**Region:** 1-7

**FlightSeason:** All year



Swallowtails (Family Papilionidae)

Eastern Tiger Swallowtail (Papilio glaucus)

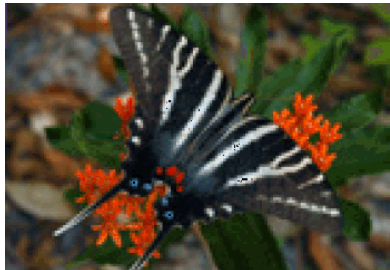
Trees—Ash (Fraxinus spp.), Black Cherry (Prunus serotina), Tuliptree (Liriodendron tulipifera), Sweetbay (magnolia virginiana)

Flower nectar

woodlands, forest margins, stream corridors, parks, gardens

**Region:** 1-6

**FlightSeason:** Mar-Nov



Swallowtails (Family Papilionidae)

Zebra Swallowtail (Eurytides marcellus)

Shrub Annonaceae—Pawpaw (Asimina spp.)

Flower nectar. Adults have short proboscis

scrubs, woodlands, fields, pastures

**Region:** 1-6

**FlightSeason:** Feb-Dec



Swallowtails (Family Papilionidae)

Pipevine Swallowtail (Battus philenor)

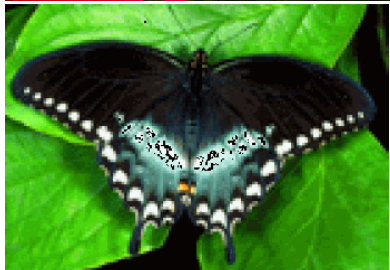
Herbaceous plants and vines (Aristolochiaceae) including Virginia Snakeroot (Aristolochia serpentaria) and Woolly Dutchman's Pipevine (Aristolochia tomentosa)

Flower nectar

fields, gardens, wetlands, woodlands

**Region:** 1-6

**FlightSeason:** Feb-Nov



Swallowtails (Family Papilionidae)

Spicebush Swallowtail (Papilio troilus)

Trees—Bays (Persea spp.), Sassafras (Sassafras albidum); Shrubs - Spicebush (Lindera benzoin)

Flower nectar

forest margins, wetlands, fields, gardens

**Region:** 1-7

**FlightSeason:** Feb-Nov

FAMILYSPECIESLARVAL HOST PLANTADULT FOODHABITATS

(Lake County = Region 3)

Swallowtails  
(Family  
Papilionidae)Giant Swallowtail  
(Heraclides  
[Papilio]  
cresphontes)Shrubs and Trees (Rutaceae)  
including Common Hoptree  
(Ptelea trifoliata), Wild Lime  
(Zanthoxylum fagara),  
Hercules-club (Zanthoxylum  
clava-herculis), and cultivated  
citrus (Citrus spp.)

Flower nectar

open areas, forest  
margins, citrus groves**Region:** 1-7**FlightSeason:**  
Feb-NovSwallowtails  
(Family  
Papilionidae)Black Swallowtail  
(Papilio  
polyxenes)Herbaceous plants—wild and  
cultivated Apiaceae including  
Sweet Fennel (Foeniculum  
vulgare), Parsley (Petroselinum  
crispum), and Mock  
Bishopsweed (Ptilimnium  
capillaceum)

Flower nectar

wetlands, open areas,  
gardens, fields,  
roadsides**Region:** 1-7**FlightSeason:**  
Feb-NovSwallowtails  
(Family  
Papilionidae)Palamedes  
Swallowtail  
(Papilio  
palamedes)Trees—Bays (Persea spp.)  
including Red Bay (Persea  
borbonia)

Flower nectar

swamps, wetlands,  
woodlands, forest  
margins**Region:** 1-6**FlightSeason:**  
Feb-NovSwallowtails  
(Family  
Papilionidae)Polydamus  
Swallowtail (Battus  
polydamus)Native and non-native vines  
(Aristolochiaceae) including  
Woolly Dutchman's Pipevine  
(Aristolochia tomentosa) and  
Calico Flower (Aristolochia  
littoralis)

Flower nectar

disturbed areas, urban  
gardens, fields**Region:** 2-7**FlightSeason:**  
All yearWhites and  
Sulphurs  
(Family  
Pieridae)Dainty Sulfur  
(Nathalis iole)Herbaceous Plants—including  
Spanish Needles (Bidens alba)  
and Indian Chickweed (Mollugo  
verticillata)

Flower nectar

disturbed areas,  
pastures, roadsides**Region:** 1-7**FlightSeason:**  
All year

FAMILYSPECIESLARVAL HOST PLANTADULT FOODHABITATS

(Lake County = Region 3)



Whites and Sulphurs (Family Pieridae)

Cloudless Sulphur (Phoebis sennae)

Herbaceous Plants and shrubs—(Fabaceae) including Partridge pea (Chamaecrista fasciculata), Sensitive Pea (Chamaecrista nictitans), and various native and non-native sennas (Senna spp.)

Flower nectar

open areas, gardens, beaches, parks

**Region:** 1-7

**FlightSeason:**  
All year



Whites and Sulphurs (Family Pieridae)

Orange-barred Sulfur (Phoebis philea)

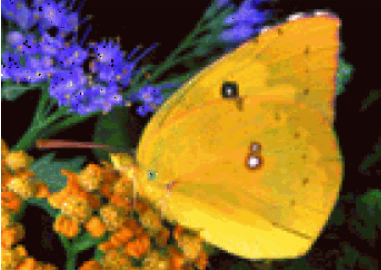
Shrubs and trees—(Fabaceae) including native and non-native sennas (Senna spp.)

Flower nectar

gardens, parks, open areas

**Region:** 2-7

**FlightSeason:**  
All year



Whites and Sulphurs (Family Pieridae)

Southern Dogface (Zerene cesonia)

Herbaceous plants—Summer Farewell (Dalea pinnata); Shrubs—Bastard Indigo (Amprpha fruticosa)

Flower nectar

sandhills, scrub, flatwoods

**Region:** 1-6

**FlightSeason:**  
All year – adults overwinter



Whites and Sulphurs (Family Pieridae)

Sleepy Orange (Eurema nicippe)

Herbaceous Plants—(Fabaceae) including Sicklepod Senna (Senna obtusifolia)

Flower nectar

fields, forest margins, scrub, sandhills, roadsides, fallow agricultural land

**Region:** 1-7

**FlightSeason:**  
All year – adults overwinter



Whites and Sulphurs (Family Pieridae)

Little Yellow (Eurema lisa)

Herbaceous plants—(Fabaceae) including Partridge Pea (Chamaerista fasciculata) and Sensitive Pea (Chamaecrista nictitans)

Flower nectar

disturbed areas, open areas, open woodlands, scrubs, fields

**Region:** 1-7

**FlightSeason:**  
All year

FAMILYSPECIESLARVAL HOST PLANTADULT FOODHABITATS

(Lake County = Region 3)



Whites and Sulphurs (Family Pieridae)

Barred Yellow (*Eurema daira*)

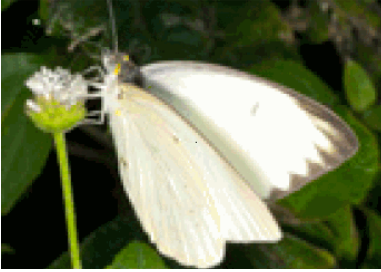
Herbaceous plants—(Fabaceae) including Pencil flower (*Stylosanthes biflora*), Shyleaf (*Aeschynomene americana*) and Sticky Jointvetch (*Aeschynomene viscidula*)

Flower nectar

beaches, scrub, disturbed areas, fields, roadsides, fallow agricultural land

**Region:** 1-7

**FlightSeason:**  
All year – adults overwinter



Whites and Sulphurs (Family Pieridae)

Great Southern White (*Ascia monuste*)

Herbaceous Plants—Virginia Peppergrass (*Lepidium virginicum*), Saltwort (*Batis maritima*), Coastal Searocket (*Cakile lanceolata*); Shrubs—Bayleaf Capertree (*Capparis flexuosa*)

Flower nectar

beaches, salt marshes, coastal strand, disturbed sites

**Region:** 2-7

**FlightSeason:**



Gossamer-winged Butterflies (Family Lycaenidae)

Great Purple Hairstreak (*Atlides halesus*)

Shrub—Oak Mistletoe (*Phoradendron leucarpum*)

Flower nectar

woodlands, wetlands, adjacent open areas

**Region:** 1-5

**FlightSeason:**  
All year



Gossamer-winged Butterflies (Family Lycaenidae)

White M Hairstreak (*Parrhasius m-album*)

Trees—Oaks (*Quercus* spp.) including Virginia Live Oak (*Quercus virginiana*) and Laurel Oak (*Quercus laurifolia*)

Flower nectar

scrubs, woodlands, forest margins

**Region:** 1-7

**FlightSeason:**  
Mar-Nov



Gossamer-winged Butterflies (Family Lycaenidae)

Gray Hairstreak (*Strymon melinus*)

Herbaceous plants in several families including clover (*Trifolium* spp.), Partridge Pea (*Chamaecrista fasciculata*), ticktrefoil (*Desmodium* spp.), and milkpea (*Galactia* spp.)

Flower nectar

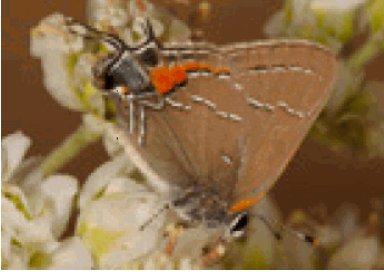
scrubs, open woodlands, disturbed areas, roadsides, gardens

**Region:** 1-7

**FlightSeason:**  
Feb-Nov

FAMILYSPECIESLARVAL HOST PLANTADULT FOODHABITATS

(Lake County = Region 3)



Gossamer-wing  
g Butterflies  
(Family  
Lycaenidae)

Southern Oak  
Hairstreak  
(Fixsenia  
favonius)

Trees—Oaks (*Quercus* spp.)

Flower nectar

scrubs, woodlands,  
forest margins

**Region:** 1-5

**FlightSeason:**  
Feb-Apr



Gossamer-wing  
g Butterflies  
(Family  
Lycaenidae)

Red banded  
Hairstreak  
(*Calycopis*  
cecropis)

Trees and Shrubs—Wax Myrtle  
(*Myrica cerifera*); Larvae feed  
primarily on dead leaves  
beneath plants

Flower nectar

open shrubby areas,  
forest margins

**Region:** 1-7

**FlightSeason:**  
All year



Gossamer-wing  
g Butterflies  
(Family  
Lycaenidae)

Atala (*Eumaeus*  
atala)

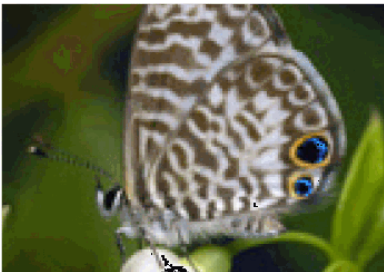
Shrubs—(Zamiaceae) including  
Coontie (*Zamia pumila*)

Flower nectar

tropical pine rocklands,  
tropical hardwood  
hammocks, parks,  
gardens

**Region:** 5-7

**FlightSeason:**  
All year



Gossamer-wing  
g Butterflies  
(Family  
Lycaenidae)

Cassius Blue  
(*Leptotes cassius*)

Trees—Florida Keys Blackbead  
(*Pithecellobium keyense*);  
Shrubs—Leadwort (*Plumbago*  
*auriculata*); Herbaceous  
plants— milkpea (*Galactia* spp.)

Flower nectar

gardens, coastal  
areas, hammock  
margins, disturbed  
sites

**Region:** 3-7

**FlightSeason:**  
All year



Gossamer-wing  
g Butterflies  
(Family  
Lycaenidae)

Ceraunus Blue  
(*Hemiargus*  
*ceraunus*)

Herbaceous  
Plants—(Fabaceae) including  
Partridge Pea (*Chamaecrista*  
*fasciculata*) and Sensitive Pea  
(*Chamaecrista nictitans*)

Flower nectar

disturbed sites,  
roadsides, coastal  
areas, scrubs

**Region:** 1-7

**FlightSeason:**  
All year



FAMILY  
Metalmark  
Butterflies  
(Family  
Riodinidae)

SPECIES  
Little Metalmark  
(*Calephelis  
virginiensis*)

LARVAL HOST PLANT  
Herbaceous Plants—Yellow  
Thistle (*Cirsium horridulum*)

ADULT FOOD  
Flower nectar

HABITATS  
wetlands, roadsides,  
pine savannas, open  
woodlands

(Lake County = Region 3)  
**Region:** 1-7  
**FlightSeason:**  
Mar-Nov



Whites and  
Sulphurs  
(Family  
Pieridae)

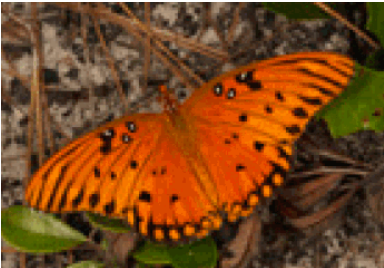
Checkered White  
(*Pontia protodice*)

Herbaceous Plants—Mustards  
(*Brassicaceae*) including  
Virginia Peppergrass (*Lepidium  
virginicum*)

Flower nectar

disturbed sites, fields,  
roadsides, fallow  
agricultural land

**Region:** 1-7  
**FlightSeason:**  
Feb-Nov



Brush-footed  
Butterflies  
(Family  
Nymphalidae)

Gulf Fritillary  
(*Agraulis vanillae*)

Vines—(*Passifloraceae*)  
including PurplePassionflower  
(*Passiflora incarnata*) and  
Corkystem Passionflower  
(*Passiflora suberosa*)

Flower nectar

roadsides, disturbed  
sites, gardens, parks,  
coastal areas, forest  
margins

**Region:** 1-7  
**FlightSeason:**  
All year



Brush-footed  
Butterflies  
(Family  
Nymphalidae)

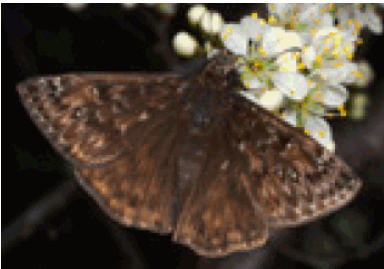
American Snout  
(*Libytheana  
carinenta*)

Trees—Sugarberry (*Celtis  
laevigata*)

Flower nectar

wetlands, woodlands,  
forest margins, parks

**Region:** 1-6  
**FlightSeason:**  
Feb-Nov



Skippers  
(Family  
Hesperiidae)



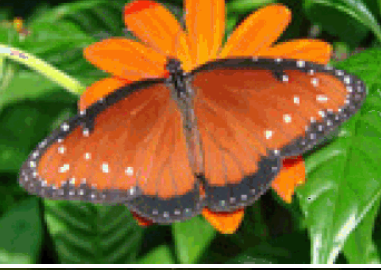
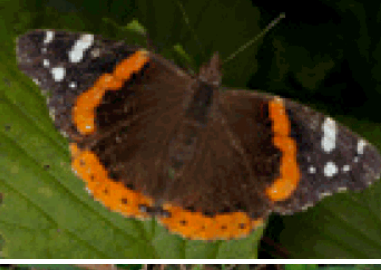

Horace's  
Duskywing  
(*Erynnis horatius*)

Trees—Oaks (*Quercus spp.*)

Flower nectar

woodlands, forest  
margins, swamps,  
adjacent open areas

**Region:** 1-7  
**FlightSeason:**  
Feb-Oct

	<u>FAMILY</u>	<u>SPECIES</u>	<u>LARVAL HOST PLANT</u>	<u>ADULT FOOD</u>	<u>HABITATS</u>	(Lake County = Region 3)
	Brush-footed Butterflies (Family Nymphalidae)	Phaon Crescent (Phyciodes phaon) 1-7	Herbaceous Plants—Turkey Tangle Fogfruit (Phyla nodiflora)	Flower nectar	roadsides, wetlands, pond margins, wet ditches, disturbed sites	<b>Region:</b> 1-7 <b>FlightSeason:</b> All year
	Brush-footed Butterflies (Family Nymphalidae)	Question Mark (Polygonia interrogationis)	Trees—Sugarberry (Celtis laevigata) and Winged Elm (Ulmus alata)	Tree sap, rotting fruit	woodlands, forest margins	<b>Region:</b> 1-4 <b>FlightSeason:</b> All year
	Brush-footed Butterflies (Family Nymphalidae)	Queen (Danaus gilippus)	Herbaceous plants (Apocynaceae)—Milkweeds (Asclepias spp.) including Pineland Milkweed (Asclepias humistrata), White Swamp Milkweed (Asclepias perennis), Pink Swamp Milkweed	Flower nectar	open pinelands, forest margins, fields, marshes, pastures, gardens, parks	<b>Region:</b> 1-7 <b>FlightSeason:</b> All year
	Brush-footed Butterflies (Family Nymphalidae)	Red Admiral (Vanessa atalanta)	Herbaceous Plants—False Nettle (Boehmeria cylindrica), Florida Pellitory (Parietaria floridana), and Nettles (Urtica spp.)	Flower nectar, tree sap, and rotting fruit	open woodlands, wetlands, disturbed sites	<b>Region:</b> 1-7 <b>FlightSeason:</b> All year
	Brush-footed Butterflies (Family Nymphalidae)	American Painted Lady (Vanessa virginiensis)	Herbaceous Plants—(Asteraceae) Cudweeds (Gnaphalium [Gnaphalium] spp.)	Flower nectar	disturbed sites, forest margin, fields, gardens	<b>Region:</b> 1-7 <b>FlightSeason:</b> Feb-Nov



<u>FAMILY</u>	<u>SPECIES</u>	<u>LARVAL HOST PLANT</u>	<u>ADULT FOOD</u>	<u>HABITATS</u>	(Lake County = Region 3)
Brush-footed Butterflies (Family Nymphalidae)	Common Buckeye (Junonia coenia)	Herbaceous Plants—Plantain (Plantago spp.), Twinflower (Dyschoriste spp.), Toadflax (Linaria spp.), False Foxglove (Agalinus spp.), Turkey Tangle Fogfruit (Phyla nodifloa)	Flower nectar, rotting fruit	forest margins, roadsides, fields, disturbed sites, gardens	<b>Region:</b> 1-7 <b>FlightSeason:</b> All year
Brush-footed Butterflies (Family Nymphalidae)	Red-spotted Purple (Basilarchia [Limenitis])	Trees—Black Cherry (Prunus serotina), Carolina Willow (Salix caroliniana); Shrubs—Deerberry (Vaccinium stamineum)	Flower nectar, rotting fruit	secondary-growth woodlands, forest margins, swamps, wetlands	<b>Region:</b> 1-3 <b>FlightSeason:</b> Mar-Oct
Brush-footed Butterflies (Family Nymphalidae)	Viceroy (Basilarchia [Limenitis] archippus)	Trees—Willows (Salix spp.)	Flower nectar, rotting fruit	wetlands, marshes	<b>Region:</b> 1-6 <b>FlightSeason:</b> Mar-Nov
Brush-footed Butterflies (Family Nymphalidae)	Hackberry Emperor (Asterocampa celtis)	Trees—Sugarberry (Celtis laevigata)	Tree sap, rotting fruit	woodlands, stream corridors, parks, forest margins	<b>Region:</b> 1-5 <b>FlightSeason:</b> Mar-Nov
Brush-footed Butterflies (Family Nymphalidae)	Little Wood Satyr (Megisto cymela)	Grasses (Poaceae)	Sap, rotting fruit and vegetation	woodlands, forest margins, swamps	<b>Region:</b> 1-4 <b>FlightSeason:</b> Mar-May





**FAMILY**  
Brush-footed Butterflies (Family Nymphalidae)

**SPECIES**  
Carolina Satyr (Hermeuptychia sosybius)

**LARVAL HOST PLANT**  
Grasses (Poaceae)—including St. Augustinegrass (Stenotaphrum secundatum)

**ADULT FOOD**  
Flower nectar, sap

**HABITATS**  
woodlands, forest margins, wetlands, adjacent open areas

(Lake County = Region 3)

**Region:** 1-7

**FlightSeason:** All year



**FAMILY**  
Hesperiidae)

**SPECIES**  
Yucca Giant-Skipper (Megathymus yuccae)

Shrubs (Agavaceae)—Adams Needle (Yucca filamentosa) and Spanish Bayonet (Yucca aloifolia)

Unknown

dry pine woodlands, scrubs, old fields, coastal dunes

**Region:** 1-5

**FlightSeason:** Feb-May



**FAMILY**  
Hesperiidae)

**SPECIES**  
Long-tailed Skipper (Urbanus proteus)

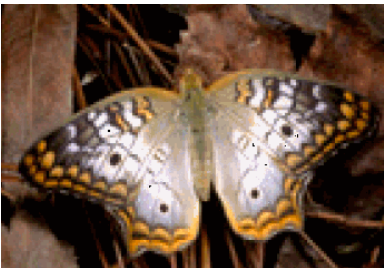
Herbaceous plants (Fabaceae)—including Ticktrefoil (Desmodium spp.); Vines—American Wisteria (Wisteria americana), Butterfly Pea (Centrosema spp.), and Milkpea (Galactia spp.)

Flower nectar

open areas, disturbed sites, forest margins, parks, gardens

**Region:** 1-7

**FlightSeason:** All year



**FAMILY**  
Nymphalidae)

**SPECIES**  
White Peacock (Anartia jatrophae)

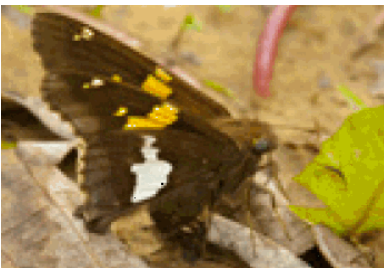
Herbaceous Plants—Waterhyssop (Bacopa monieri) and Turkey Tangle Fogfruit (Phyla nodiflora)

Flower nectar

wetlands, roadsides, canals, wet ditches, disturbed sites

**Region:** 2-7

**FlightSeason:** All year



**FAMILY**  
Hesperiidae)

**SPECIES**  
Silver-spotted Skipper (Epargyreus clarus)

Vines—including American Hogpeanut (Amphicarpeae bracteata), American Wisteria (Wisteria frutescens), and Groundnut (Apios americana); Shrubs—Bastard Indigo (Amorpha fruticosa)

Flower nectar

woodlands, forest margin, swamps, gardens

**Region:** 1-7

**FlightSeason:** Mar-Nov



	<u>FAMILY</u>	<u>SPECIES</u>	<u>LARVAL HOST PLANT</u>	<u>ADULT FOOD</u>	<u>HABITATS</u>	(Lake County = Region 3)
	Skippers (Family Hesperiidae)	Mangrove Skipper (Phocides pigmalion)	Trees—Red Mangrove (Rhizophora mangle)	Flower nectar	mangroves, coastal areas	<b>Region:</b> 4-7  <b>FlightSeason:</b> All year
	Skippers (Family Hesperiidae)	Tropical Checkered-Skipper (Pyrgus oileus)	Herbaceous Plants (Malvaceae)—Cuban Jute (Sida rhombifolia) and Common Fanpetals (Sida acuta)	Flower nectar	disturbed sites, roadsides, fields, pastures	<b>Region:</b> 1-7  <b>FlightSeason:</b> Feb-Nov
	Brush-footed Butterflies (Family Nymphalidae)	Julia (Dryas iulia)	Vines—(Passifloraceae) including Corkystem Passionflower (Passiflora suberosa)	Flower nectar	tropical hardwood hammock margins, gardens, disturbed sites	<b>Region:</b> 7  <b>FlightSeason:</b> All year
	Brush-footed Butterflies (Family Nymphalidae)	Monarch (Danaus plexippus)	Herbaceous plants (Apocynaceae)—Milkweeds (Asclepias spp.) including Pineland Milkweed (Asclepias humistrata), White Swamp Milkweed (Asclepias perennis), Pink Swamp Milkweed	Flower nectar	open areas, fields, gardens, disturbed sites, parks, scrubs, pastures, marshes	<b>Region:</b> 1-7  <b>FlightSeason:</b> All year

*An Equal Opportunity Institution. UF/IFAS Extension, University of Florida, Institute of Food and Agricultural Sciences, Andra Johnson, Dean. Single copies of UF/IFAS Extension publications (excluding 4-H and youth publications) are available free to Florida residents from county UF/IFAS Extension offices.*