

# 2016 ANNUAL PLANT DISEASE REPORT

By E.V. Campoverde<sup>1</sup>, P. Lopez<sup>2</sup> and G. Sanahuja<sup>2</sup>

**CROP:** Ornamentals

**LOCATION:** South Florida

## LIST OF TOP ORNAMENTAL CROPS SUBMITTED IN 2016:

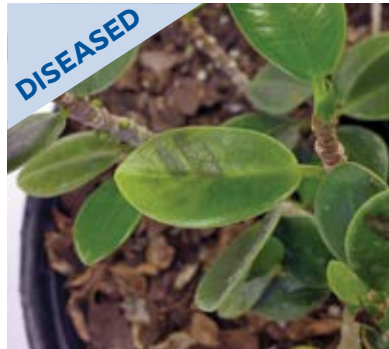
**Foliage:** Bromeliads, Ficus, Mandevilla/Dipladenia, Cordyline, Dracaena

**Palms:** Royal, Queen

**Succulents:** Echeveria

**Woody:** Privet, Jasmine

### FICUS



Bacterial leaf spot

### BROMELIAD



Algal leaf spot (Red Rust)

### CORDYLINE



Phytophthora crown rot

### ECHEVERIA



Cladosporium leaf spot

Photo credits: P. Lopez



Figure 1. Foliage crops grown in south Florida ornamental nurseries. Photo credits: E. Vanessa Campoverde

## 2016 DATA OF: FUNGI, NO PATHOGENS, OOMYCETES, BACTERIA, VIRUSES, ALGAE, AND PHYTOPLASMAS

# of diagnosis for Fungi:	<b>211</b>
# of diagnosis for No Pathogens:	<b>185</b>
# of diagnosis for Oomycetes:	<b>86</b>
# of diagnosis for Bacteria:	<b>55</b>
# of diagnosis for Viruses:	<b>10</b>
# of diagnosis for Algae:	<b>2</b>
# of diagnosis for Phytoplasmas:	<b>1</b>

**Total number of samples submitted from nurseries, landscapes and homes: 550**

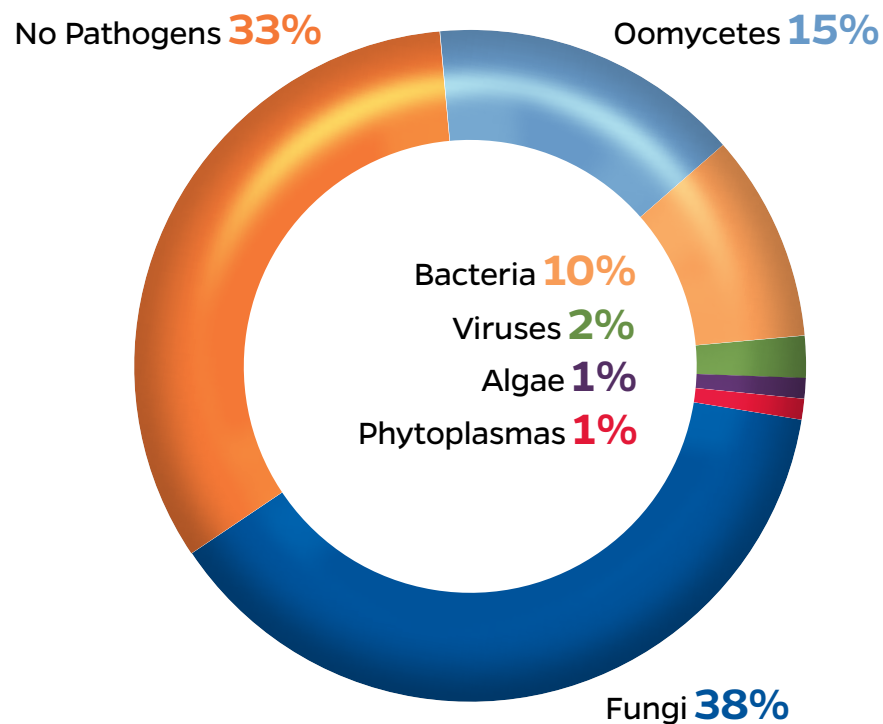


Figure 2. Percentage distribution of plant diseases and/or no pathogens found in ornamental plant samples.