

**CONTROL OF PEPPER WEEVIL USING BIOLOGICAL AND CHEMICAL
INSECTICIDES ON 'JALAPENO' PEPPERS**

Dak Seal

University of Florida-IFAS

Tropical Research and Education Center

Homestead, Florida

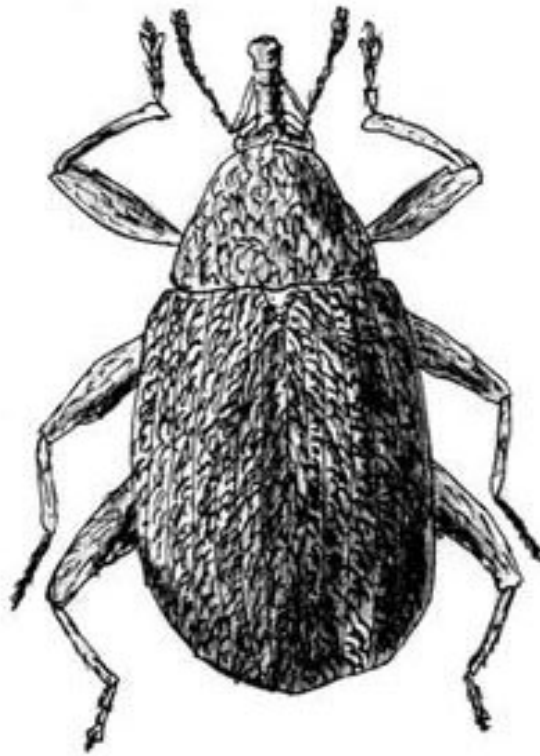


Table 1. Mean numbers of pepper weevil adults/ 'Jalapeno' plants and mean numbers of infested fruits/ plot treated with various treatments

| Treatments | Rate /acre | Color code of plots | Mean no. adults/plant ^z | Mean no. infested fruits/treatment ^z |
|----------------------------|------------------|---------------------|------------------------------------|---|
| MBI-203 DF1 | 1.0 lb. | RG | 1.10a | 48.2a |
| MBI-203 DF1 | 2.0 lb. | RY | 1.10a | 34.5a |
| MBI-203 DF1 | 4.0 lb. | YY | 1.00a | 36.4a |
| MBI-206 DF1 | 2.0 qrts | GG | 0.80b | 34.2a |
| MBI-206 DF1 | 4.0 qrts | BB | 0.60b | 28.5a |
| MBI-206 DF1 | 6.0 qrts | RR | 0.68b | 32.6a |
| Assail 30SC | 4.0 oz | BG | 0.50bc | 22.5a |
| Actara | 4.0 oz | Y | 0.20c | 5.8c |
| Assail 30SC fb. Radiant | 4.0 oz 8.0 oz | G | 1.12a | 28.5b |
| Assail 30SC fb. Dimilin | 4.0 oz 4.0 oz | B | 0.20c | 10.5bc |
| Assail 30SC fb. Warrior | 4.0 oz 3.2 oz | R | 0.12c | 18.8b |
| Control | | W | 1.35a | 45.2a |

^zMeans within a column followed by the same letter(s) are not significantly different (P > 0.05; using Duncan's Multiple Range Test).