

**Field trial for evaluating various compounds to control squash Phytophthora blight**

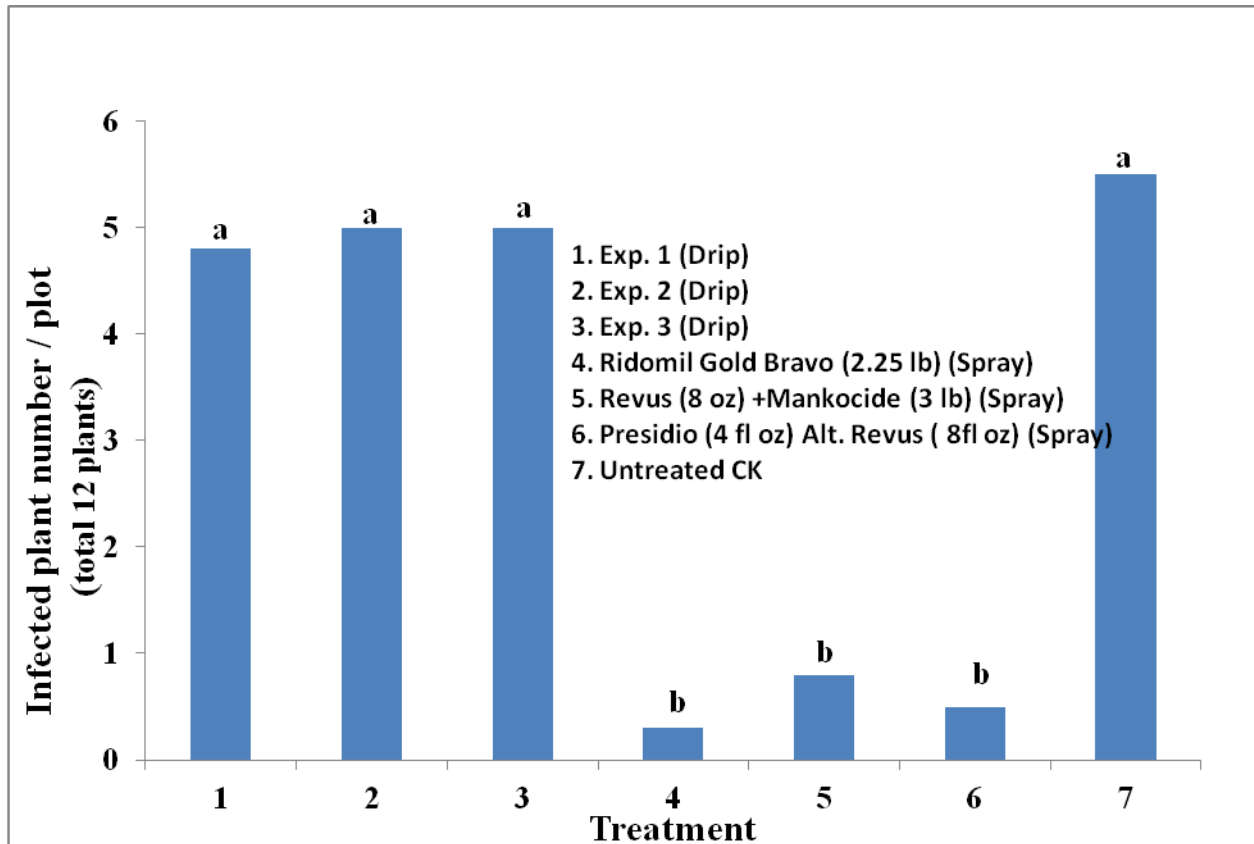
*Shouan Zhang, Xiaohui Fan, Yuqing Fu, Jaimin Sukhadevbhai Patel*  
*Tropical Research and Education Center*  
*University of Florida, IFAS*

*Qingren Wang*  
*UF/IFAS Miami-Dade County Extension Services*

**Seeding date:** November 18, 2014  
**Variety:** 'Enterprise'

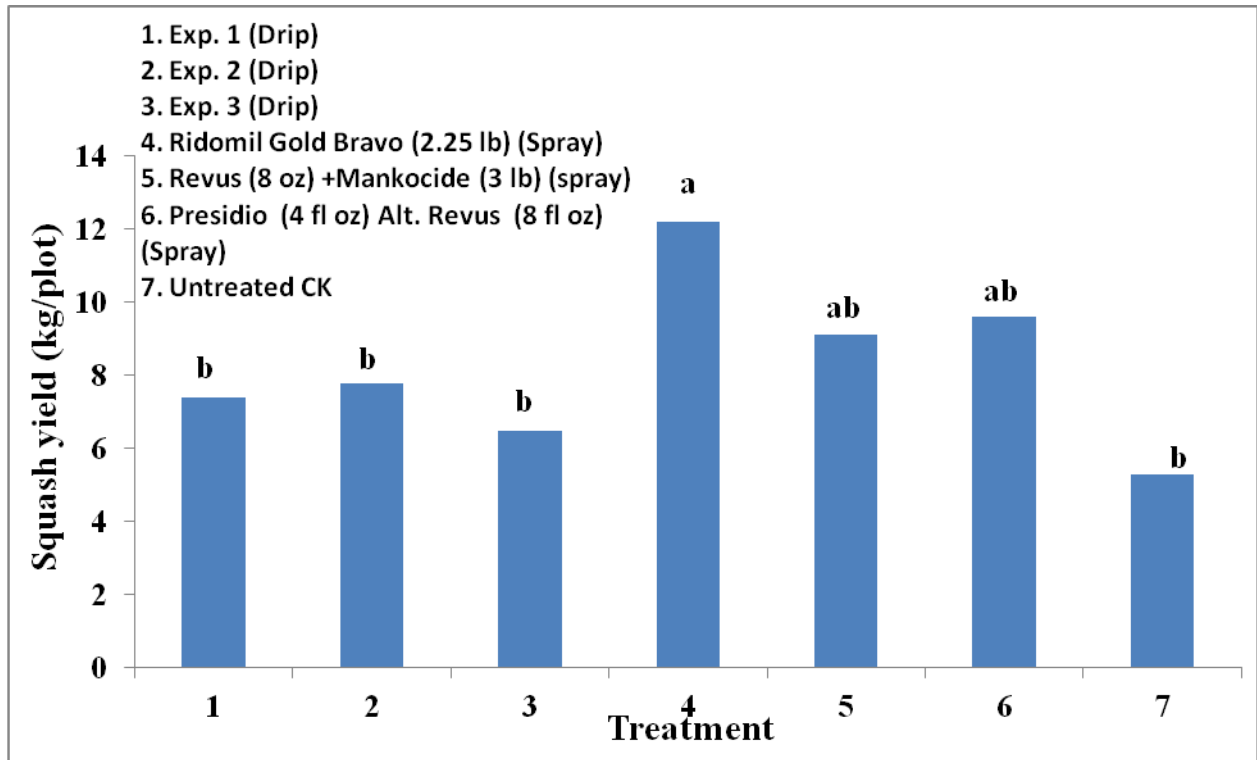
**Spray schedule:** December 8, 19, 29, 2014 and January 9, 2015 (Trts. 4, 5, 6)  
**Injection schedule:** November 18, 25 and December 2, 16, 2014 and Jan. 2, 2015 (Trts. 1, 2, 3)

**Inoculation with *P. capsici*:** 2 g wheat grain/plant on December 15, 2014  
**Infected plant evaluation:** January 12, 2014  
**Harvest squash fruits:** January 8 and 13, 2015



**\*: Means in each column with the same letter are not significantly different. (P = 0.05)**

### Squash yield of two harvests



\*: Means in each column with the same letter are not significantly different.  
( $P=0.05$ )

# Field trial for evaluating various compounds to control root-knot nematode on tomato

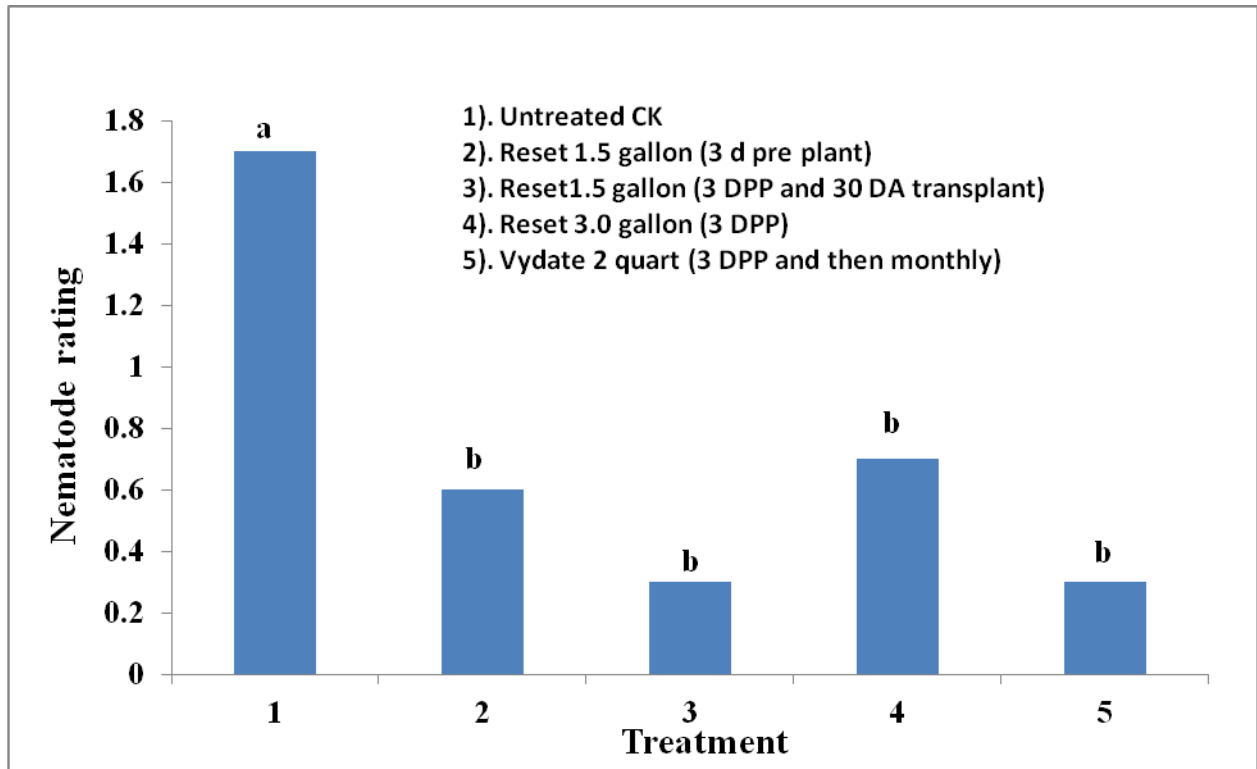
Shouan Zhang, Xiaohui Fan, Yuqing Fu, Jaimin Sukhadevbhai Patel  
Tropical Research and Education Center  
University of Florida, IFAS

Qingren Wang  
UF/IFAS Miami-Dade County Extension Services

Transplanting date: November 3, 2014  
Variety: 'Sanibel'

Injection schedule: October 31, November 3, December 3, 2014 and January 3, 2015

Nematode evaluation: January 13, 2015



\*: Means in each column with the same letter are not significantly different.  
( $P = 0.05$ )