

Photo from Gardening Solutions- Foodscaping  
<https://gardeningsolutions.ifas.ufl.edu/design/types-of-gardens/foodscaping.html>  
Credit: Brie Arthur©



# INCORPORATING EDIBLES INTO YOUR LANDSCAPE

Julio Perez  
UF/IFAS Horticulture Agent I  
MGV Coordinator



## Concepts and consdierations

- Define edible landscaping and Foodscape
- Designing a Foodscape
- Pests
- Upkeep



## Plant Selection

- Right, Plant Right Place
- Edible plants to consider
- Unexpected edibles



## Example Landscapes

A virtual tour of some landscapes that utilize edible landscapes



# Edible Landscaping

UF/IFAS Edible landscaping defines Edible Landscaping as "the replacing of plants that are strictly ornamental with plants that produce food."



Foodscaping- planting edible within an established landscape





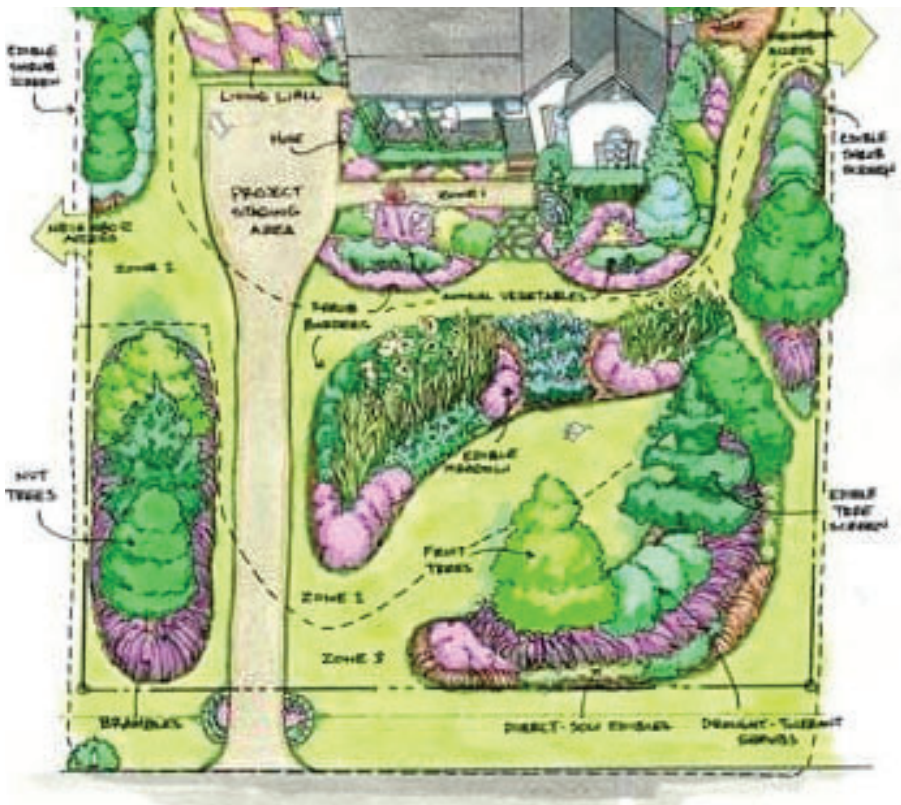
## Why add edibles

- Fresh food
- know what pesticides are used
- increase beauty
- increased landscape diversity



## Considerations

- edibles will need watering
- know your landscape and your soil
- Research plants
- know the potential pests for your edibles



Suggest 3 zones

In her book *Foodscape revolution*, Brie Arthur suggests dividing landscapes into 3 zones

- zone 3 is the area furthest away from the house it is the periphery of the yard
- Zone 2 is the area midway between the house and the periphery
- Zone 1 is around the chouse



## Work with what you have

work around the landscape plants you already have planted. Plant few edibles in zone three (about 20% edibles) and increase to 40% in zone 2 and 50% in zone 1.

Drawing by Preston Montague  
<https://www.trianglegardener.com/the-foodscape-revolution/>



# Where's the sun



knowing where the sun is and how much/little sunlight is in an area is important

Full sun areas- fruiting vegetables like tomatoes, peppers, and flowering plants.

Shadier places - leafy greens like kale, lettuce, and herbs



## Pests

Pest in the Foodscape:

- Tend to fewer
- Caution must be used when treating pests
- Utilize IPM
  - Least toxic chemical
  - watch for beneficials
  - Scout often!



# UpKeep



## Water

Depending on the time of year some vegetables need to be watered more often



## Fertilizer

To be fully productive you may need to fertilize area's with edibles a little more often



## Time

Growing edibles does have a time commitment. Scout for potential problems often

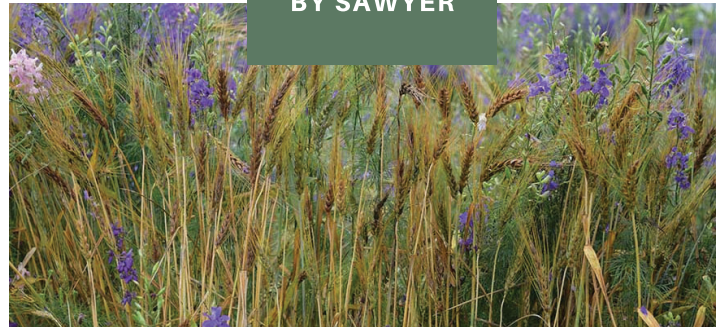
# Plant Selection

## Selecting Edibles

- Right Plant Right Place
  - Group plants by water needs
  - remember to also group by shade tolerance
- Consider:
  - Color schemes
  - Texture
  - space
- Don't forget
  - Fruit Trees
  - Grains



LIFESTYLE  
BY SAWYER





# Remember:

*If you don't like it now,  
growing it usually doesn't  
change your mind*



Artichoke (*Cynara scolymus*)

Coffee (*Coffea arabica*)

Corn (*Zea mays*)

Fig (*Ficus carica*)

Kale (*Brassica oleracea*)

'Meyer' lemon (*Citrus limon*)

Lettuce (*Lactuca sativa*)

Naranjilla (*Solanum quitoense*)

Pepper (*Capsicum annuum*)

Orangeberry (*Glycosmis pentaphylla*)

Sweet bay (*Laurus nobilis*)

Tree tomato (*Cyphomandra crassicaulis*)

Chard (*Beta vulgaris*)

Yerba mate (*Ilex paraguariensis*)

Basil (*Ocimum* spp.)

Australian finger lime (*Citrus australasica*)

Sage (*Salvia officinalis*)

Eggplant (*Solanum melongena*)

Blueberry (*Vaccinium* spp.)

Sugarcane (*Saccharum officinarum*)

Lemongrass (*Cymbopogon citratus*)

Sunquat (*Citrofortunella 'Sunquat'*)

Paddle cactus (*Opuntia ficus-indica*)

Banana (*Musa* spp.)

Passionflower (*Passiflora* spp.)

Avocado (*Persea americana*)

Rosemary (*Rosmarinus officinalis*)

Calamondin orange (*Citrofortunella mitis*)

Beans (*Phaseolus*, *Vicia*, and *Vigna* spp.)

Citrumelo (*Citrus x paradisi x Poncirus trifoliata*)

Pineapple guava (*Feijoa sellowiana*)

Kumquat (*Fortunella* spp.)

Roselle (*Hibiscus sabdariffa*)

Malabar spinach (*Basella alba*)





# Grow your own tea



## Edible Flowers

- Amaranth.
- Dianthus.
- Calendula.
- Lavender.
- Nasturtium, garden.
- Salvia.
- Snapdragon.
- Viola.
- Elderberry Flowers





# Web example of Edible Landscaping

<https://garden-photos-com.photoshelter.com/gallery/Vegetables-Growing-with-Flowers-in-Gardens-Stock-Images/G0000O6d8e.YhcFA/>



## ASK EDIS Publication list

### FOODSCAPING

<https://gardeningsolutions.ifas.ufl.edu/design/types-of-gardens/foodscaping.html>

### EDIBLE LANDSCAPING

<https://edis.ifas.ufl.edu/publication/ep146>

### LANDSCAPE WITH EDIBLES

<https://edis.ifas.ufl.edu/publication/EP475>



# QUESTIONS?

Horticulture Agent I  
Email: [pjulio@ufl.edu](mailto:pjulio@ufl.edu)  
Phone: (386) 329-0318

An Equal Opportunity Institution



**UF** | IFAS Extension  
UNIVERSITY of FLORIDA

**Putnam County**  
Horticulture