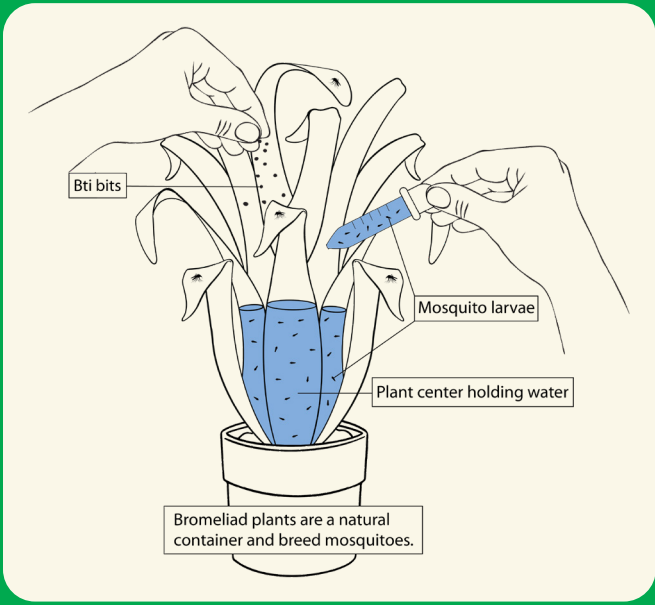


Treatment Routine

Maintain mosquito-free bromeliads with the following steps:

- 1. Monitor plants regularly to check for mosquito larvae.
- 2. Keep bromeliads in pots, and drain regularly.
- 3. Apply Bti (*Bacillus thuringiensis israelensis*) bits to water-holding bromeliads in the landscape.



Calculate Care Costs

To see how much it might cost to sufficiently treat your landscape for mosquitoes, use our calculator, available at tiny.cc/ufsaraext_bromcalc.



ABOUT US

UF/IFAS Extension Sarasota County partners the resources of Sarasota County, the University of Florida, and the United States Department of Agriculture. We translate expert research into community initiatives, classes, and volunteer opportunities related to six core areas: 4-H youth development; agriculture; gardening and landscaping; natural resources; nutrition and healthy living; and sustainability.



FIND US

Twin Lakes Park, Green Building
6700 Clark Road, Sarasota 34241
sfyl.ifas.ufl.edu/sarasota
scgov.net/extension

FOLLOW US

- facebook.com/ufsarasotaext
- instagram.com/ufsarasotaextension
- youtube.com/@ufsarasotaext
- linkedin.com/company/ufsarasotaext
- pinterest.com/ufsarasotaext

CONTACT US

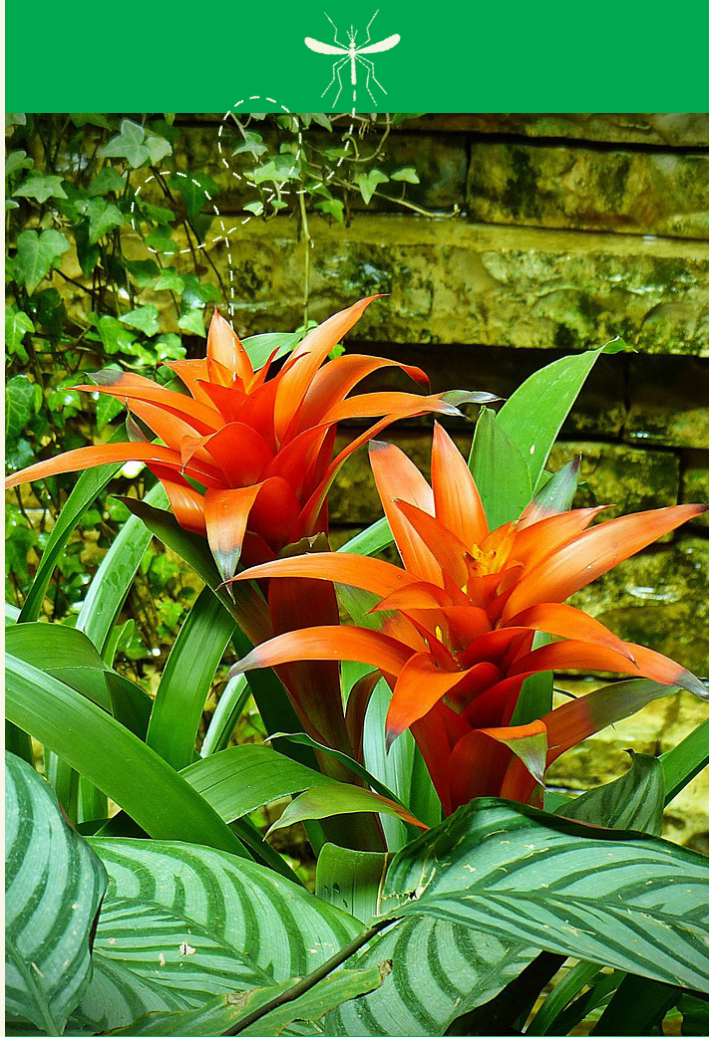
sarasota@ifas.ufl.edu
311 or 941.861.5000

An Equal Opportunity Institution.

The University of Florida is committed to providing universal access to all of our events. For disability accommodations, such as alternate formats of written material, please contact 941-861-5000 or sarasota@ifas.ufl.edu at least two weeks in advance. Learn more at ada.ufl.edu and scgov.net/ada.

UF/IFAS Extension
Sarasota County

BROMELIAD CARE TO MANAGE MOSQUITOES



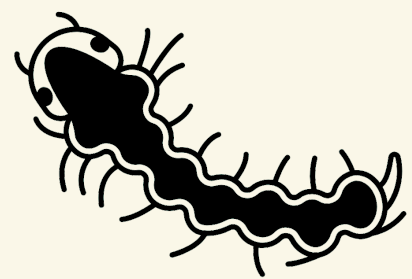
Ways to Help

Bromeliads are tropical plants that can stand out as beautiful additions to the landscape. But, they can also stand out another way: as prime breeding grounds for mosquitoes.

These tropical plants retain water near the base of their leaves, creating small, stagnant pools needed in the life cycle of certain mosquitoes of public health concern.



So, managing mosquitoes in bromeliads has become a critical aspect of public health efforts in Florida.



This brochure shares the primary options for limiting the impacts of bromeliads on mosquito breeding: treating bromeliads or replacing them with alternative plants.

Questions?

Email sarasota@ifas.ufl.edu
Call 311 (or 941.861.5000, outside Sarasota County)

Alternative Plants

If caring for your bromeliads takes too much time or money, consider replacing them with low-maintenance alternatives.



Yucca
(Yucca species)



Agave
(Agave species)



Aloe
(Aloe species)



Kalanchoe
(*Kalanchoe blossfeldiana*)



Stonecrops
(Sedum species)



Bulbine
(*Bulbine frutescens*)



Learn More

For more ideas about visually attractive, low-maintenance plants that provide pollinator and wildlife habitat, visit tiny.cc/ufsaraext_lml.

