

# Florida-Friendly Landscaping™

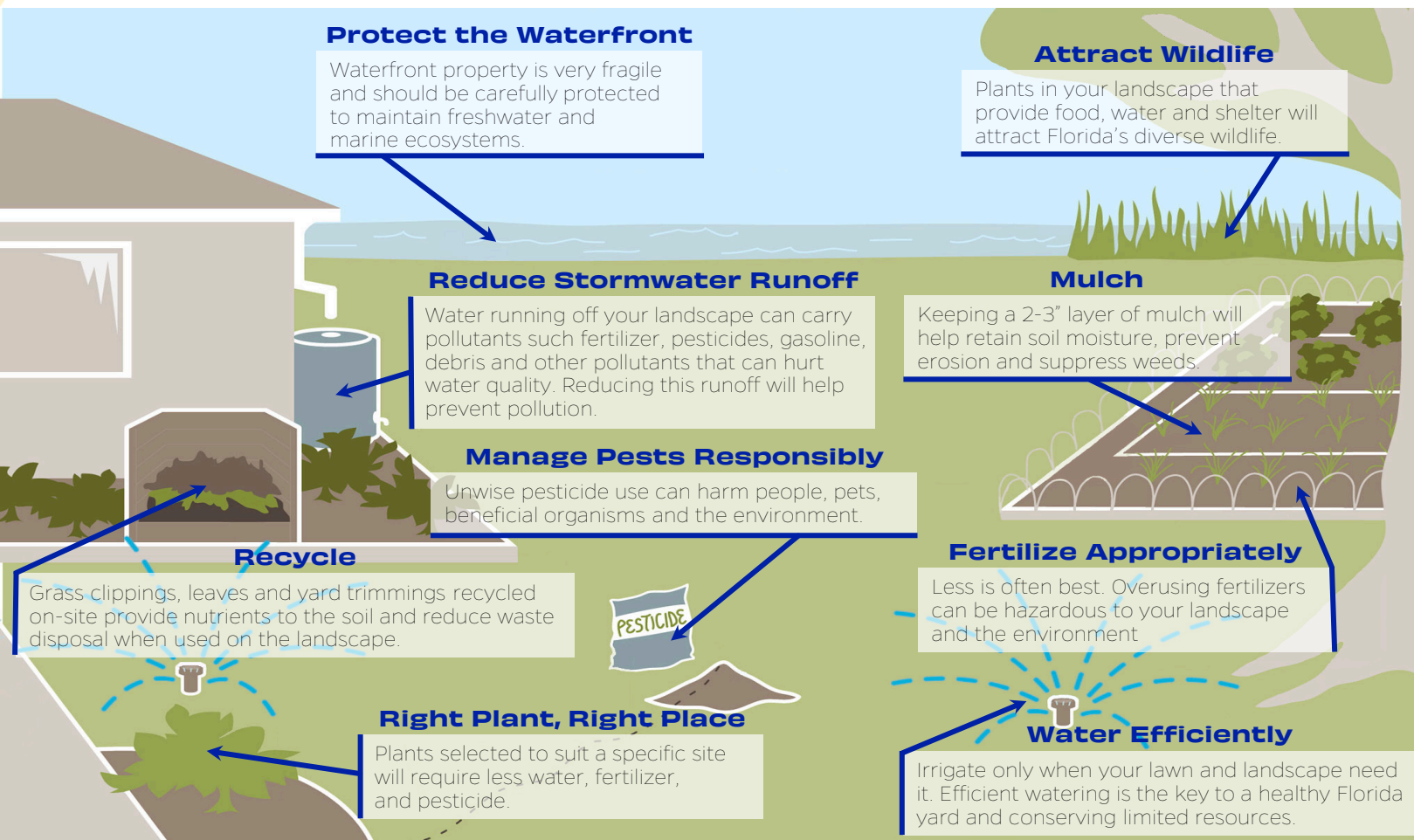
One landscaping school of thought reigns supreme in Florida due to its scientifically supported benefits: Florida-Friendly Landscaping™ (FFL). It provides numerous benefits that can make it a gamechanger for communities that practice it. Let us review three impactful benefits.

We can help.

Our “Neighborhood Best Practices” program provides tips and techniques on Florida-Friendly Landscaping™, along with efficient irrigation, preserves, wildlife, protecting our local waterways, creating community gardens, composting initiatives, and much more. Register online at [tiny.cc/ufsaraext-nbp](http://tiny.cc/ufsaraext-nbp) to make a difference in your neighborhood.

## Landscaping Maintenance costs

Florida-Friendly Landscaping™ practices significantly lower maintenance costs by using the “Right Plant, Right Place” principle. This approach is more cost-effective than traditional landscaping since it emphasizes plants that require less water and maintenance. Using plants adapted to the local environment cuts the need for expensive fertilizers and pesticides, lowering costs. And, the reduced demand for irrigation and frequent upkeep leads to long-term savings in water bills and labor expenses.



Credit: UF/IFAS

Watch our **Florida-Friendly Landscaping™** videos:  
[tiny.cc/ufsaraext-fflvideos](http://tiny.cc/ufsaraext-fflvideos).



# Florida-Friendly Landscaping™ (cont'd)

## Wildlife

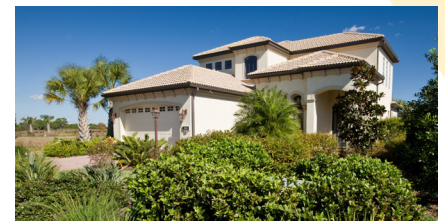
Large-scale landscapes usually lack plant diversity, which can lead to major pest issues and harms local wildlife. Florida-Friendly Landscaping™, though, stands out as a superior choice for supporting wildlife.

Florida-Friendly Landscaping™ benefits wildlife by emphasizing plant and habitat diversity in landscapes, helping mitigate habitat fragmentation common with traditional, manicured landscapes, and more.

That helps an array of animals, including migrating birds that find essential stopover points and sustenance overcome the challenges of their journeys. Native pollinators, crucial to the ecosystem's health, also thrive in these environments, fostering plant pollination and vitality in the region's ecology.



*An Atala butterfly.  
Florida-Friendly Landscaping™  
practices helped save the species.*

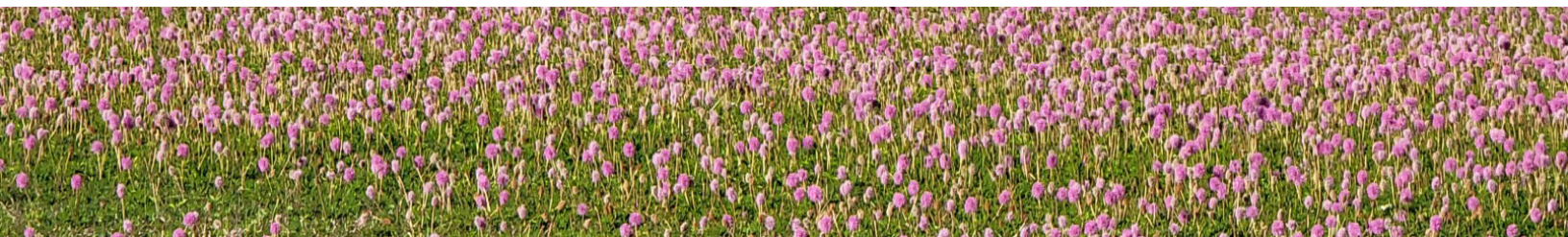


## Water Quality

Transitioning to Florida-Friendly Landscaping™ protects our water quality. Your community will have healthier ponds with minimal harmful algae blooms. Instead, ponds will become thriving habitats for game fish, beautiful wading birds, and other wildlife.

This landscaping shift also minimizes the influx of stormwater pollutants, preventing the flow of these contaminants to beaches. That helps preserve the integrity of this precious natural resource and ensure the sustained well-being of coastal environments and ecosystems.

We all want to enjoy our beaches with less worry about harmful algal blooms, such as red tide, whose increasing occurrence and severity has been tied partly to traditional landscaping practices.



*Sunshine mimosa, a Florida-Friendly Landscaping™ native turf replacement.*

*Image credits: UF/IFAS, UF/IFAS Extension Sarasota County*

## Learn more "Neighborhood Best Practices"

- Register here: [tiny.cc/ufsaraext\\_nbp](https://tiny.cc/ufsaraext_nbp)
  - Follow us on social media for the latest tips:  
[Facebook.com/ufsarasotaext](https://Facebook.com/ufsarasotaext) | [Instagram.com/ufsarasotaextension](https://Instagram.com/ufsarasotaextension) | [Twitter.com/ufsarasotaext](https://Twitter.com/ufsarasotaext)
- Find more information at our websites: [sfyl.ifas.ufl.edu/sarasota](https://sfyl.ifas.ufl.edu/sarasota) and [scgov.net/extension](https://scgov.net/extension)



**Questions?** [sfyl.ifas.ufl.edu/sarasota](https://sfyl.ifas.ufl.edu/sarasota) | [sarasota@ifas.ufl.edu](mailto:sarasota@ifas.ufl.edu) | **941.861.5000**