



FLORIDA  
**MASTER  
GARDENER**

# Plant ID

List #7

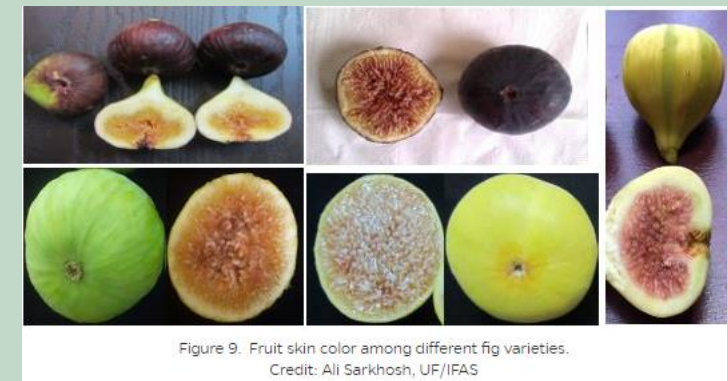
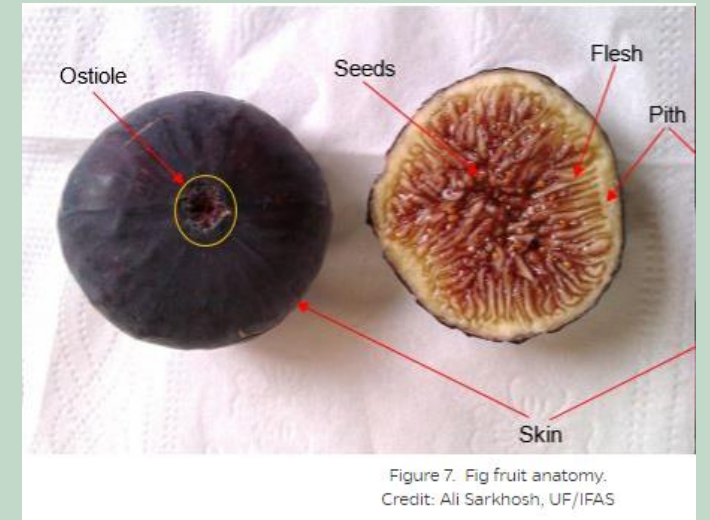
UF/IFAS — Franklin/Wakulla Counties



# Fig

## *Ficus carica*

# Moraceae





# Fig

## *Ficus carica*

# Moraceae

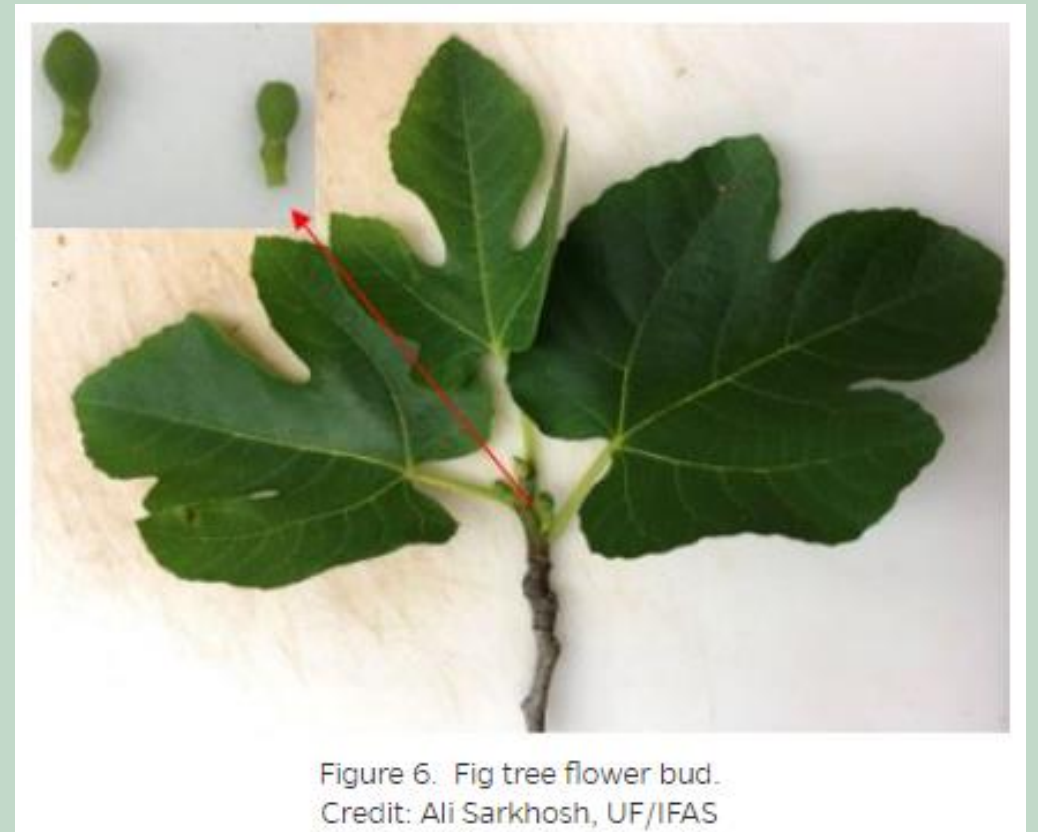


Figure 6. Fig tree flower bud.  
Credit: Ali Sarkhosh, UF/IFAS

<https://floridata.com/plant/43>

# Fig

## *Ficus carica*

# Moraceae



- Plant type: deciduous fruit tree
- Light: full sun
- Size: 25 ft tall
- Life Span: perennial
- Native: Asia
- Highlight: Fruit ripens in July, more cold hardy than other varieties
- Problem: fruit is attractive to wildlife, nematodes a problem in sandy soil, fig rust disease can occur.



# Longleaf Pine

*Pinus palustris*

# Pinaceae



Longleaf pine cones can be as tall as 10 inches. UF/IFAS.





# Longleaf Pine

## *Pinus palustris*

# Pinaceae



- Plant type: Tree
- Light: full sun to partial
- Size: Tall 60' – 125', 30' – 40' wide
- Life Span: Perennial (150+)
- Native: North America
- Highlight: Most disease, pest and fire resistant of southern pines. Drought tolerant and will take salt spray.
- Problem: A few pests: borers, sawflies, moths, beetles and weevils.

<https://edis.ifas.ufl.edu/publication/ST469>

<https://gardeningolutions.ifas.ufl.edu/plants/trees-and-shrubs/trees/longleaf-pine.html>

# Garlic Chives

## *Allium tuberosum*

Amaryllidaceae



<https://floridata.com/plant/632>

Photo from Missouri Botanical Gardens Plant Finder



# Garlic Chives

## *Allium tuberosum*

# Amaryllidaceae



<https://floridata.com/plant/632>



# Garlic Chives

## *Allium tuberosum*

# Amaryllidaceae



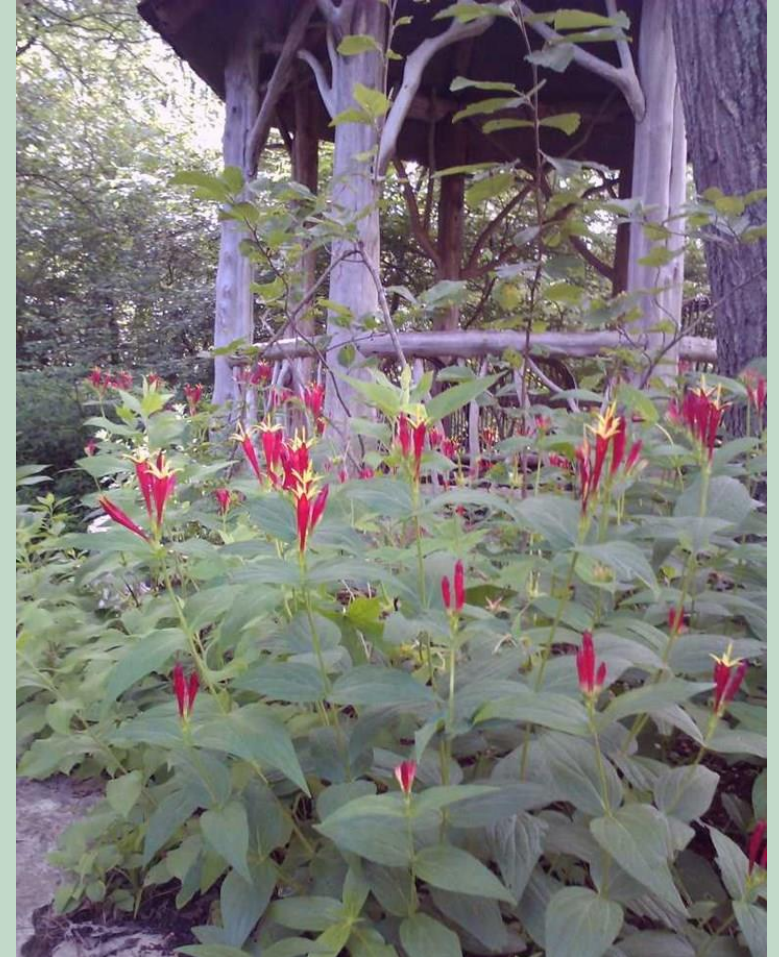
- Plant type: Bulb
  - Light: Full sun to part shade
  - Size: 1-1.5 ft tall, spread 1-2 ft
  - Life Span: Perennial
  - Native: China
- Highlight: easily grown for both culinary and ornamental purposes, no serious pest problems
  - Problem: Can become a weed if flowers are left to set seed



# Indian Pink

*Spigelia marilandica*

# Loganiaceae





# Indian Pink

## *Spigelia marilandica*

# Loganiaceae



- Plant type: flowering herbaceous
- Light: full sun to partial
- Size: 1-2 ft tall, .5-1.5 ft wide
- Life Span: perennial
- Native: Southeastern US
- Highlight: showy flowers, attracts hummingbirds, tolerates wet soils
- Problem: no serious insect or disease problems

<http://blogs.ifas.ufl.edu/nassauco/2017/06/07/fact-sheet-indian-pink/>



Laurel Oak

*Quercus laurifolia*

Fagaceae

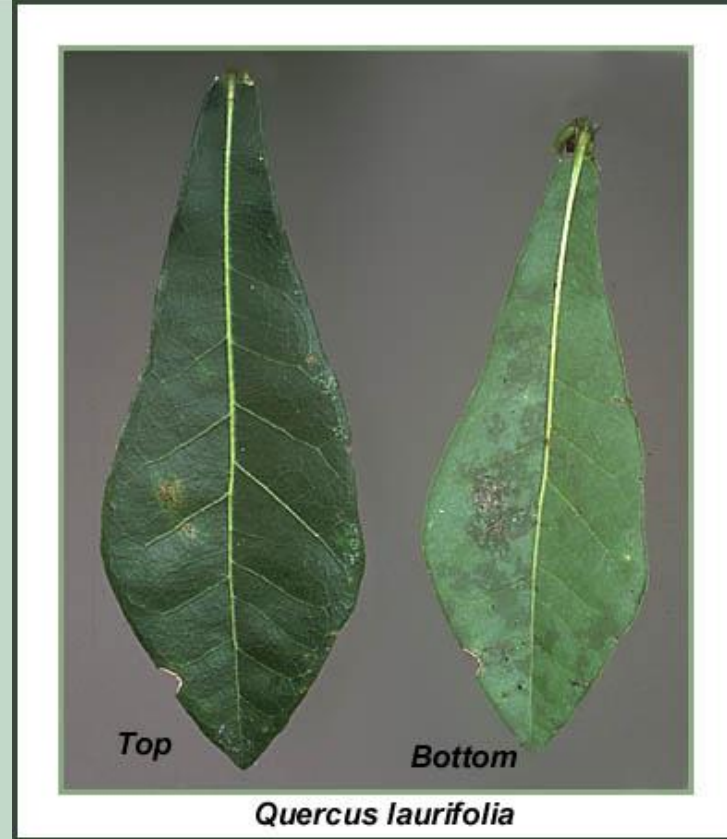




# Laurel Oak

## *Quercus laurifolia*

# Fagaceae





# Laurel Oak

## *Quercus laurifolia*

# Fagaceae



- Plant type: tree
  - Light: sun - partial
  - Size: large
  - Life span: perennial
  - Native: Florida
- Highlights: large fast growing shade tree, moderate drought tolerance, pests and diseases not a serious problem
  - Problems: short life span of 50-75 years

<http://edis.ifas.ufl.edu/st549>

# Wild Plum

## *Prunus americana*

# Rosaceae



Native plums are producing clouds of white blooms currently. Some trees will produce sweet fruit and some will be tart, but all can be used. Photo by: Les Harrison

<http://blogs.ifas.ufl.edu/wakullaco/2019/03/09/wild-plums-are-blooming-sparkleberry-will-soon/>



# Wild Plum

*Prunus americana*

# Rosaceae



# Wild Plum

## *Prunus americana*

# Rosaceae

- Plant type: Tree
- Light: Full to partial sun/shade
- Size: small tree 20 ft tall
- Life Span: Perennial
- Native: Florida/North America
- Highlight: White flowers in spring, small yellow/red fruit attractive to wildlife and birds, high drought tolerance
- Problem: thorns, no major pest of diseases, tent caterpillars can defoliate the tree, some diseases can spread to peaches

<https://edis.ifas.ufl.edu/publication/FR317>



# Red Mulberry

## *Morus rubra*

# Moraceae



Red mulberry (*Morus rubra*) tree with fruit. Photo by Vern Wilkins,  
Indiana University, Bugwood.org



# Red Mulberry

## *Morus rubra*

# Moraceae



- Plant type: fruit tree
  - Light: full sun to part shade
  - Size: 40 Ft tall, 50 feet wide
  - Life Span: deciduous perennial fruit tree
  - Native: North America
- Highlight: Attractive tree with edible fruit, attractive to wildlife, leaves attract the mourning cloak butterfly caterpillars
  - Problem: fruit and bird droppings can be messy

<https://floridata.com/plant/1270>



# Southern Live Oak

*Quercus virginiana*

Fagaceae





# Southern Live Oak

*Quercus virginiana*

Fagaceae





# Southern Live Oak

*Quercus virginiana*

# Fagaceae



# Southern Live Oak

## *Quercus virginiana*

Fagaceae



- Plant type: tree
- Light: sun - partial
- Size: large\*\*\*
- Life span: perennial
- Native: Florida and North America
- Highlight: good shade tree, high drought and aerosol salt tolerance, long lived, few serious pest
- Problem: messy leaf drop, roots are aggressive

<http://edis.ifas.ufl.edu/st564>



# Yaupon Holly

*Ilex vomitoria*

# Aquifoliaceae





# Yaupon Holly

*Ilex vomitoria*

# Aquifoliaceae





# Yaupon Holly

## *Ilex vomitoria*

# Aquifoliaceae



- Plant type: shrub/tree
  - Light: sun-partial
  - Size: small-medium
  - Life Span: perennial
  - Native: Florida and Eastern US
- Highlight: high drought and salt tolerance, thick hedge or tree, no pests, red to yellow fruit on female plants
  - Problem: not showy, no diseases of major concern

<http://edis.ifas.ufl.edu/fp274>

# Florida Yew

*Taxus floridana*

Taxaceae



<https://ssl.acesag.auburn.edu/projects/plants/plant/view.php?plantid=541b3f8489c9b6.75820110>

[https://www.conifers.org/ta/Taxus\\_floridana.php](https://www.conifers.org/ta/Taxus_floridana.php)



# Florida Yew

## *Taxus floridana*

Taxaceae



[https://www.floridamuseum.ufl.edu/100years/florida-yew/#/gallery\\_69/1](https://www.floridamuseum.ufl.edu/100years/florida-yew/#/gallery_69/1)



# Florida Yew

## *Taxus floridana*

# Taxaceae



- Plant type: tree
- Light: full sun to deep shade
- Size: medium
- Life Span: evergreen perennial
- Native: Florida
- Highlight: can be trimmed to shape, tolerates salt spray and coastal conditions
- Problem: foliage and fruit is toxic to humans if ingested, scale, mushroom root-rot