

# Florida-Friendly Landscaping™

## Pattern Book:

Sample plant lists and designs for  
four Florida regions

USDA Hardiness Zones 10A, 10B and 11,  
South Florida



Gail Hansen, PhD. Dept. of Environmental  
Horticulture, University of Florida  
Kelly Perez, MLA, Landscape Architecture  
Esen Momol, PhD. Director, Florida-  
Friendly Landscaping™ Program,  
University of Florida



# Table of Contents

## Contents

- Page 3- Florida-Friendly Landscaping™ Principles
- Page 4- Residential Yard Activity Design Zones
- Page 5- Inventory and Analysis of Site Conditions
- Page 6- Plant Groups for Site Conditions
- Pages 7,8- Design Characteristics for Plant Groups
- Page 9- USDA Plant Hardiness Zones– Florida
- Pages 10 to 13– Example Master Landscape Plans
- Page 14- Using the Design Tip Sheets
- Pages 15 to 24- Design Tip Sheets for Site Conditions
- Pages 25 to 35- Plant Tables
- Page 36- Irrigation Recommendations
- Page 37- References and Publications

## Purpose

The design and maintenance of landscapes in residential yards has a significant impact on water shortages and declining water quality in many counties in Florida. Maintenance of traditional landscape plantings can require a large amount of water, fertilizer, and pesticides which can be a serious environmental threat to Florida's waterbodies.

As part of a broad effort to improve water quality, the following landscape guidelines were developed for USDA Plant Hardiness Zones 10A, 10B and 11 in South Florida to guide the design and installation of Florida-Friendly Landscaping™ (FFL) in residential neighborhoods. By adopting Florida-Friendly principles for residential yards homeowners will be creating environmentally sound landscapes that will conserve and protect both water and energy. Homeowners with FFL yards will enjoy attractive landscapes and wildlife, save time and money, and protect the quality of Florida's water by reducing pollution in our waterbodies.



## How to Use this Document

- Step 1-** Review the Florida-Friendly Landscaping™ principles and general design principles
- Step 2-** Note the activity zones for residential yards and the design intent for each zone
- Step 3-** Analyze your yard to determine site conditions in each activity zone
- Step 4-** Determine which plant groups are appropriate for your site conditions
- Step 5-** Refer to the example master plan layouts for organization suggestions
- Step 6-** Check the plant tables for your site condition-choose a mix of plants with a variety of textures, colors, sizes and shapes
- Step 7-** Note the recommended irrigation schedule



# Florida-Friendly Landscaping™ Principles

## Florida-Friendly Landscaping™

The intent of Florida-Friendly Landscaping™ (FFL) is to use resource-efficient plants and sustainable maintenance practices and materials to conserve water and reduce negative impacts on waterbodies and wildlife habitats. The primary design concept is “right plant, right place” which means choosing resource-efficient plants (those that use less water, pesticides, and fertilizer), which will grow and remain healthy with minimal care under the site conditions. Choosing the right plant requires an analysis of the site including soil, sun/shade patterns, moisture, and existing vegetation. The health of the existing vegetation provides clues to specific site conditions- look for healthy plants and use plants with the same growing requirements.



## Florida-Friendly Design Principles

- Choose the **Right plant, for the Right Place** to minimize resource use
- **Reduce turf** to a small but functional area and replace large turf areas with low spreading groundcover or drought tolerant plants
- **Plant trees** for shade on the east, west, and south sides of the house
- **Shade the AC** unit with trees rather than shrubs
- **Direct water flow** in the yard and use plants to catch and **filter rainwater** before it flows into waterbodies or the stormwater system
- Use plants to **attract wildlife** throughout the yard
- **Specialty gardens**, such as butterfly gardens, can be created by grouping plants to provide food and shelter
- Incorporate **mulched areas**, gravel areas, pathways, and patios in the yard to provide access and spatial organization

## General Landscape Design Principles

- **Organization:** Create outdoor “rooms” by using pathways, hardscapes, and plants to divide and organize spaces
- **Proportion:** Keep the size of the plants proportional to the house and spaces in the yard
- **Repetition:** Repeat plant materials for a unified and cohesive look, with just enough variety for interest
- **Variety:** Make the yard interesting by having variation in plant sizes (especially heights), color, texture, and shape
- **Composition:** Group and arrange plants in overlapping masses based on the size, form, color, and growing requirements
- **Emphasis:** Use dramatically different plants as focal points to attract attention



# Residential Yard Activity Zones

## Design Intent for Activity Zones

### Private Zone- Back Yard

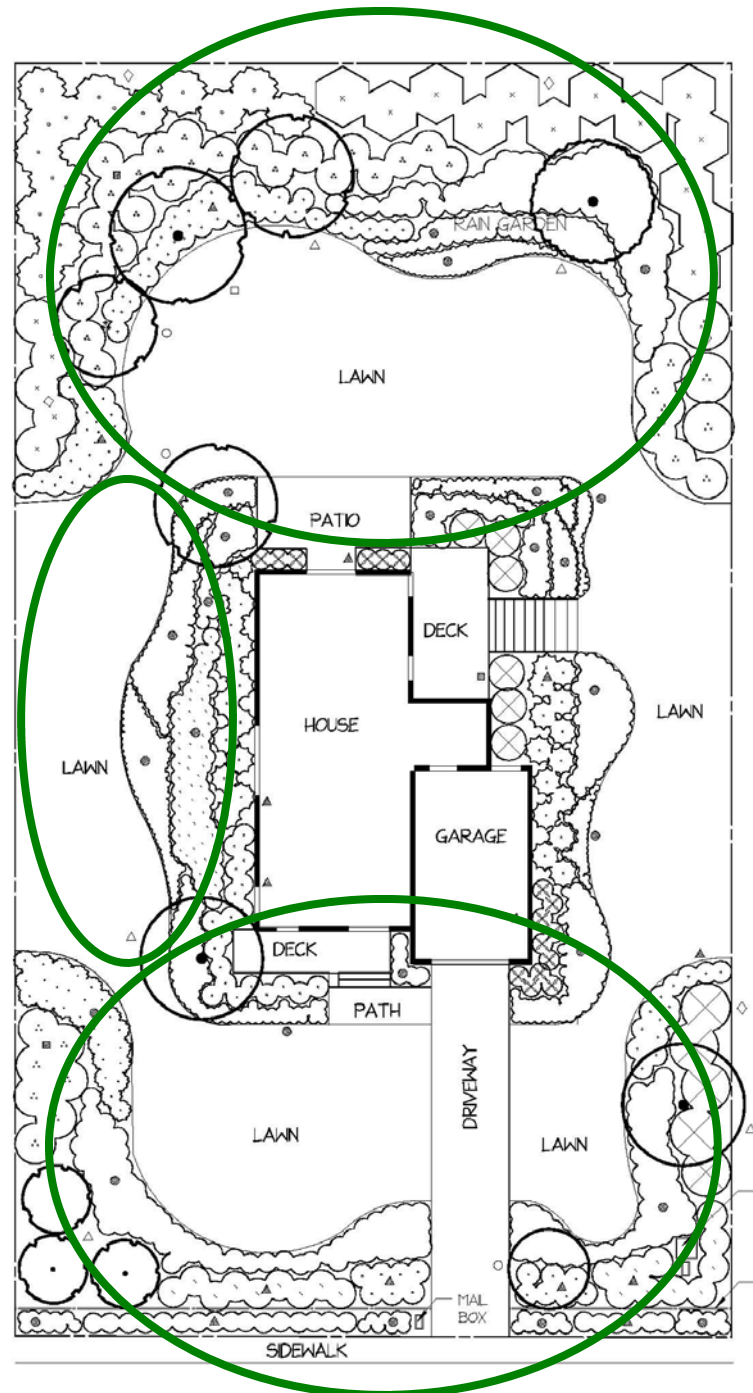
- Create comfortable microclimates for the user (sun/shade areas)
- Create activity areas for children's play and dogs
- Create entertainment and dining areas
- Include pathways for circulation
- Screen for privacy from exterior views
- Design for specialty gardens (butterfly, rain, Vegetable, and water edge)
- Provide access to utility meters and vents
- Use more low maintenance, hardy plants

### Utility/Work Zone- Side Yards

- Screen utilities (AC unit, pool pumps, etc.)
- Screen for privacy from exterior views
- Provide a yard work area (compost bin, work bench)
- Include pathways for circulation

### Public Zone- Front Yard

- Design for curb appeal and property value
- Design for high visibility- use a variety of color, form, and texture in plants
- Highlight front yard with good quality specimen plants
- Direct view to front entry with focal plants
- Blend with neighborhood (don't overdesign for area)
- Consider safety for visitors and delivery people
- Choose plants with tidy growth habit for walkways





# Inventory and Analysis of Site Conditions

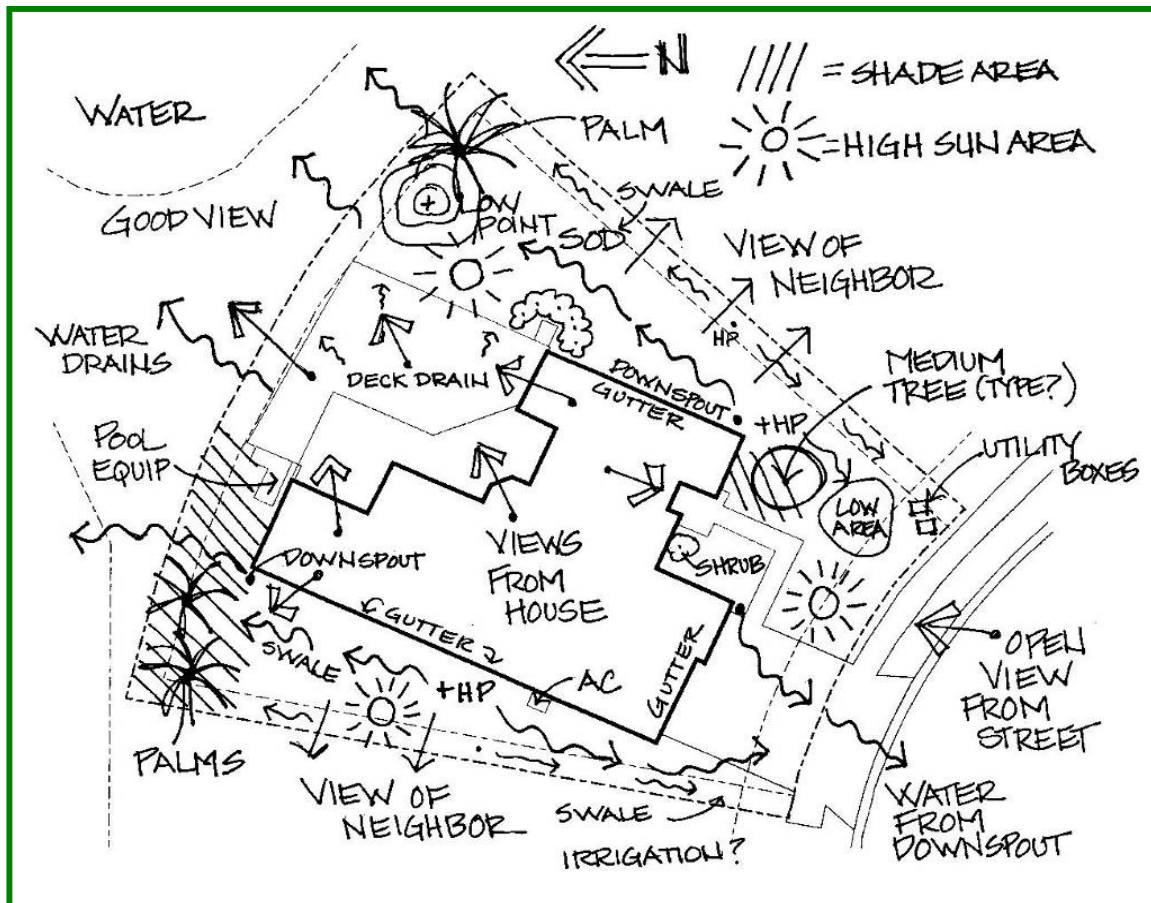
## Inventory—Note the following on the base map:

- Utility location and building easements
- Areas of sun, shade, and part shade
- Views from the house, street and the neighbors
- Direction of water flow
- Low areas and high points
- Soil characteristics (type)
- Vegetation to keep
- Exotic, invasive vegetation to remove
- Location of gutter/downspouts
- Location of irrigation heads
- House type (architecture)
- Color and materials of house and hardscape
- Window and door locations, height of windows
- Depth of building overhangs
- Circulation routes
- Maintenance problems (inaccessible areas, bare spots, erosion, etc.)

**Site inventory and analysis** is the process of recording all site conditions on a plan view base sheet and analyzing the conditions to guide design decisions and determine actions to be taken

## Analysis— determine actions to be taken to resolve problems:

- Plant shrubs to screen (hide) or open (frame) a view (or utilities)
  - Collect stormwater with gutters/rain barrels and/or redirect and harvest water
  - Plant trees for shade or clear for sun
  - Relocate or create circulation routes to provide adequate access
  - Remove old, overgrown vegetation, or relocate if possible
  - Test soil and amend with compost if necessary
  - Remove exotic, invasive vegetation
- \*contact local UF/IFAS extension office for more information





# Plant Groups for Site Conditions

## Plant Groups

Plants groups are based on the most appropriate plants for specific site locations and conditions. For example, Group A1 to A3 includes plants that are appropriate for the front entry and other areas of the front yard. Group B1 and B2 includes plants that are better suited under windows or along walls. Group C plants are the best plants for along property lines and fences and Group D includes plants that work well under trees. Group E includes plants for a variety of specialty gardens.

Each plant group was created by matching the physical characteristics and functional attributes of the plants to specific site conditions and user needs in each activity zone. Consideration was given to the typical type of activities (play, entertaining, walking), building and hardscape conditions (walkways, utilities, windows), and the type of user (family, delivery people) for each zone. Other considerations included maintenance practices, accessibility, privacy, and safety issues.

Plant choices for each group were based on drought tolerance, regional suitability, low maintenance (pruning), native status, local availability, and cost. Plants were also chosen to facilitate use, reduce maintenance, create habitats, and look attractive. This book includes descriptions of the characteristics of the plants in each group, examples of planting plans, design suggestions, and plant lists for each group.

**Plant Characteristics:** lists the physical and aesthetic characteristics of plants appropriate for each site condition

**Example Planting Plans:** The planting plan examples give suggested layouts and arrangements for plant materials and bed lines for zones 10A and 10B. Optional master plans show different design/layout possibilities

**Design Tips:** include photos of typical site conditions (Figures 1 and 2 are examples of typical problems), with suggested design solutions

**Plant tables:** include the plant name, size, sun and shade requirements, and native status. Native plants are indicated by an asterisk (\*) by the plant name

## Site Conditions

**Group A1: Front Entries and Patios**

**Group A2: Along Sidewalks and Walkways**

**Group A3: Around Mailboxes and Utilities**

**Group B1: Under Windows**

**Group B2: Along Walls**

**Group C1: Along Property Lines**

**Group C2: Along Fences**

**Group D: Under Trees**

**Group E: Specialty Gardens– Butterfly Garden, Water Edge, Rain Garden**



Figure 1: Entry lacks interest



Figure 2: Shrubs along wall are over-trimmed



## Plant Groups: Design Characteristics

### Group A1: Front Entry/Patio

- Low growing and compact plants typically retain their form without sprawling or growing over horizontal surfaces. The clean growth habit allows trimming to be kept at a minimum and walkways are safer for visitors and delivery persons
- Colorful plants are good choices for focal points because they capture the viewer's attention and draw the eye to the entry or patio
- Specimen plants with bold forms are also used at front entrances to create focal points from the street
- Medium to coarse texture and complex flowers and foliage patterns makes planted areas interesting for close-up viewing in the patio
- Medium to small trees around the patio provide an overhead plane that gives the feeling of enclosure and protects from the sun



### Group A3: Around Mailboxes and Utilities

- Low or medium shrubs around AC units prevent blockage of air flow to the unit; use tree canopies to shade unit instead
- Plants with clean growth habits tend to retain their original form and require less pruning to prevent interference to the AC unit
- Prevent insect bites and injury to mail carriers and meter readers by selecting plants that do not attract biting or stinging insects and don't have thorns or sharp points



### Group A2: Along Sidewalks and Walkways

- Low-growing, non-sprawling plants with clumping growth habits keep views open and pathways clean and clear of tripping hazards
- Arching, weeping, and mounding forms that brush the pathway soften the hard edge





## Plant Groups: Design Characteristics

### Group B1 and B2: Under Windows and Along Walls

- Medium shrubs cover the lower wall and reduce the visual mass of the wall
- Shrubs with soft/fine texture and flexible branches are easy to prune and reduce injury when accessing the wall for maintenance
- Plants with medium mature heights will fill the wall space beneath the window without covering the window
- Plants with soft texture and loose foliage (no thorns or stiff leaves), ensures easy pruning and access to windows for maintenance and storm shutters. Flexible branches plants also allow for emergency exit if needed.
- Small trees with low canopies will screen and shade windows



### Group C1 and C2: Along Property Lines and Fences

- Fast growing, upright shrubs with dense foliage provide maximum screening and greater privacy
- Evergreen shrubs provide year-round buffers
- Plants with dense foliage and clean growth habits will hide the fence and make maintenance easier
- Match the mature height of the plant to the height of the fence for complete coverage
- Attractive plants are used for front yard fences that require plants on both sides to hide the fence from the street and the house view

### Group D: Under Trees

- Small plants (with small root balls) will minimize plant and tree root interference
- Groundcovers with vining and spreading habits are good choices to cover large areas under trees
- Plants with larger foliage will hide fallen leaves under deciduous trees
- Shade conditions will be either filtered or dense and may vary with the time of year

### Group E: Specialty Gardens– Rain Garden, Butterfly, and Water Edge

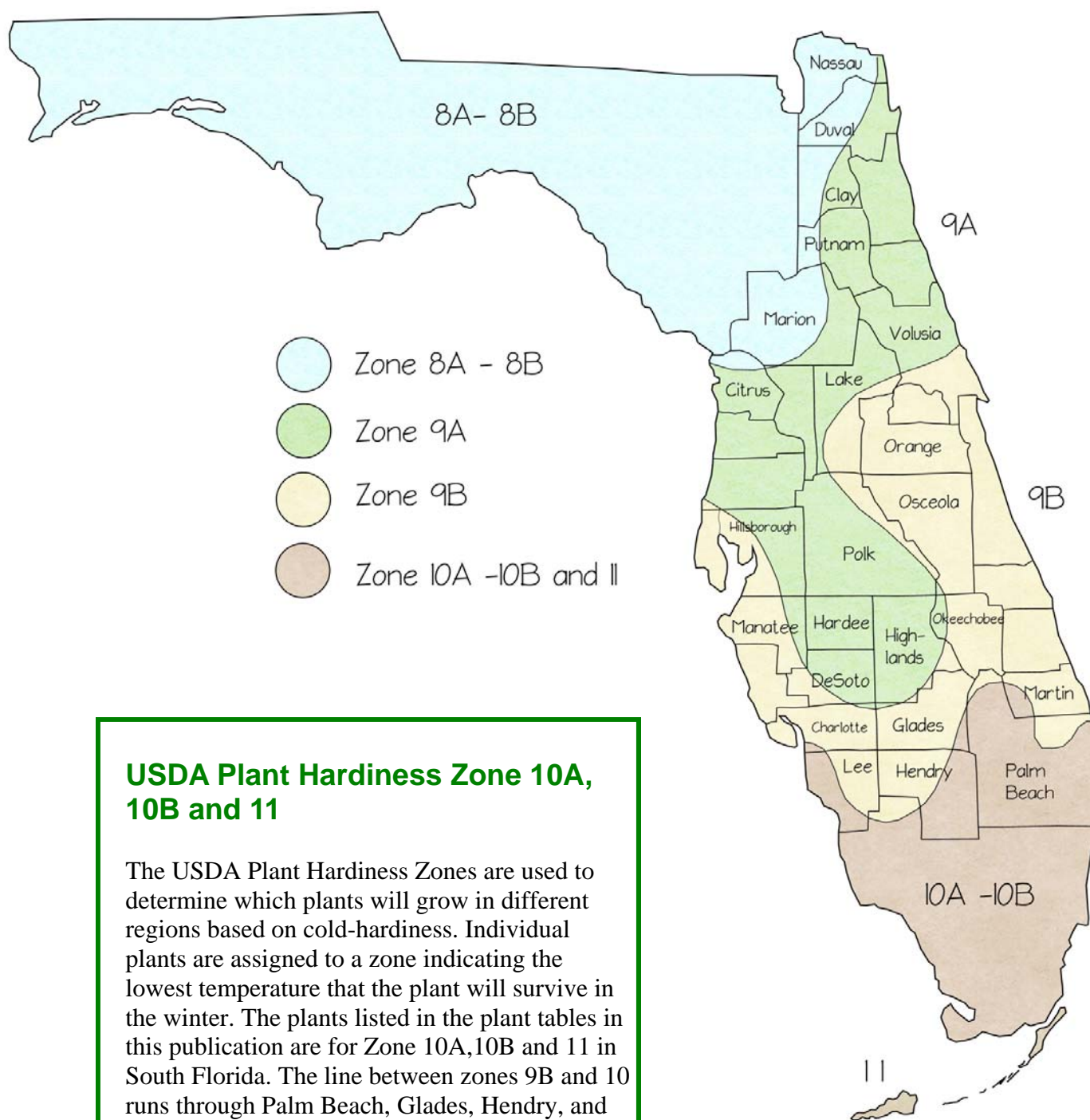
- Plants that tolerate wet and dry conditions are necessary for rain gardens
- Color, food and shelter are important for butterfly plants
- Plants that are attractive, provide a buffer, and help to clean the water should be used along the water edge







## USDA Plant Hardiness Zones North Florida– Zone 8A and 8B

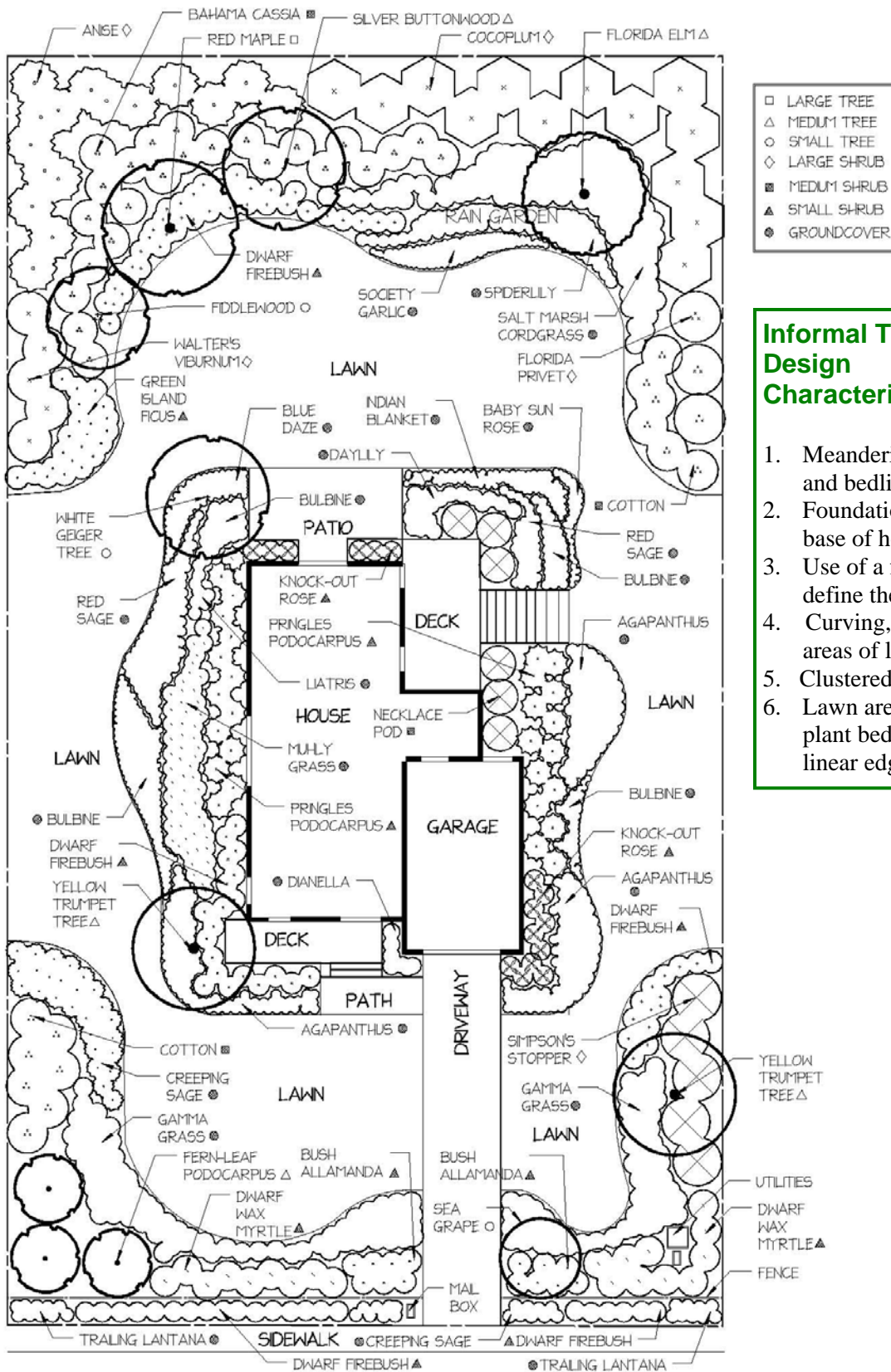


### USDA Plant Hardiness Zone 10A, 10B and 11

The USDA Plant Hardiness Zones are used to determine which plants will grow in different regions based on cold-hardiness. Individual plants are assigned to a zone indicating the lowest temperature that the plant will survive in the winter. The plants listed in the plant tables in this publication are for Zone 10A, 10B and 11 in South Florida. The line between zones 9B and 10 runs through Palm Beach, Glades, Hendry, and Lee counties. Everything south of this line is Zone 10A, 10B and Zone 11. For this publication Zones 10 and 11 were combined because the plants are similar for all three zones.



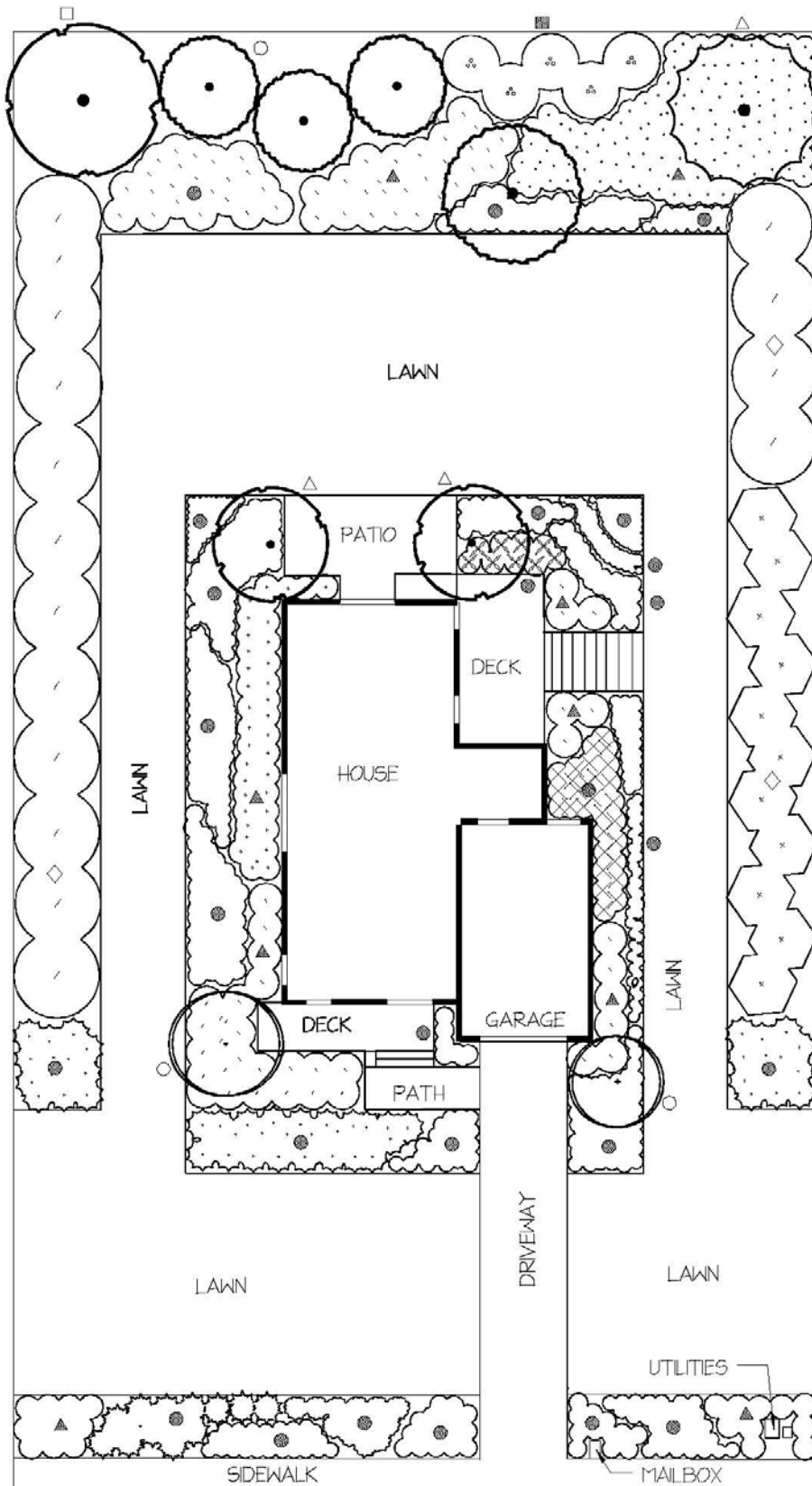
# Master Planting Plan– Zone 10A and 10B Informal Traditional Design



- ### Informal Traditional Design Characteristics
1. Meandering pathways and bedlines
  2. Foundation plants at base of house
  3. Use of a fence to define the front yard
  4. Curving, sweeping areas of lawn
  5. Clustered trees
  6. Lawn areas defined by plant beds with curvilinear edges



# Optional Planting Plan Layout Formal Geometric Design



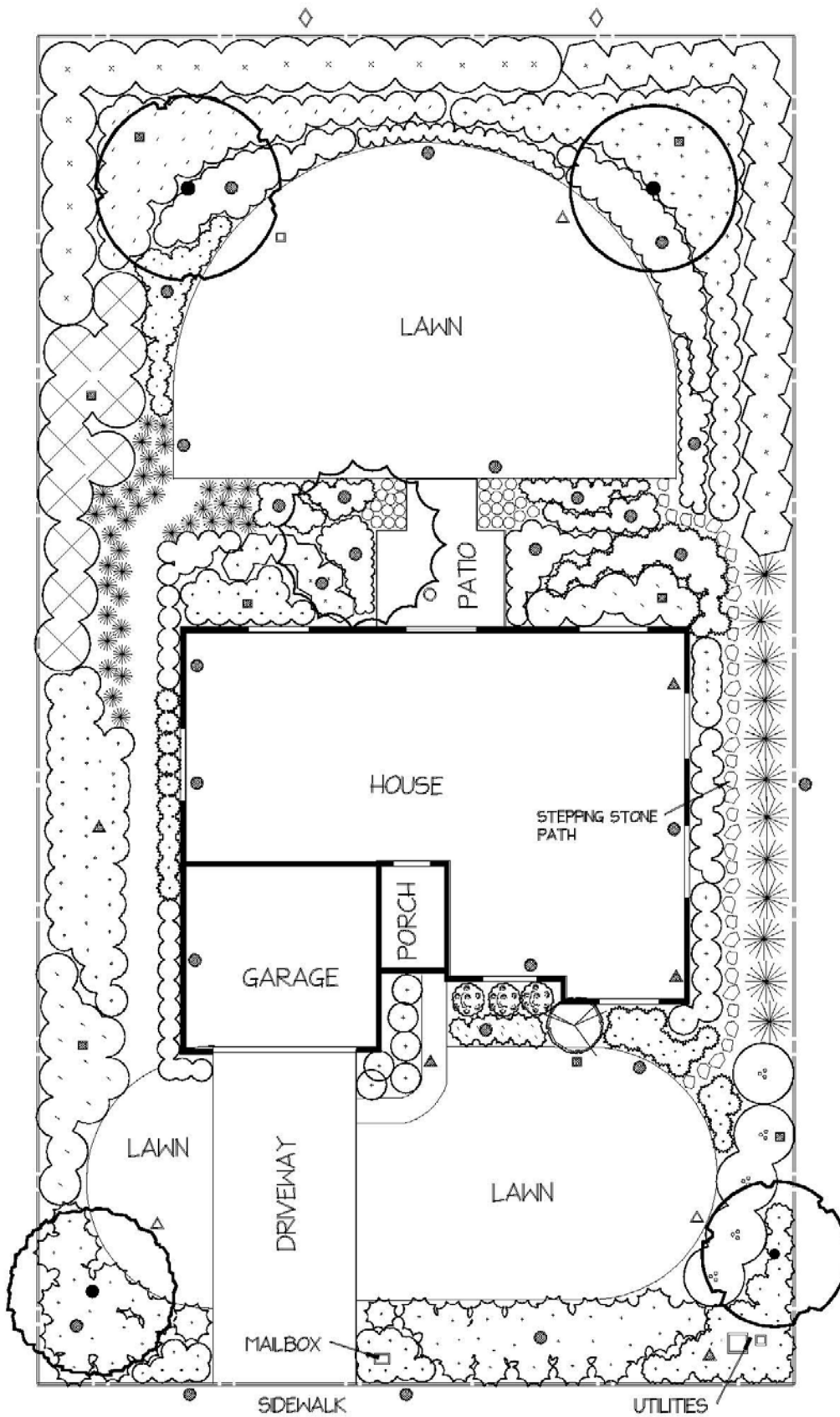
□	LARGE TREE
△	MEDIUM TREE
○	SMALL TREE
◇	LARGE SHRUB
⊠	MEDIUM SHRUB
▲	SMALL SHRUB
●	GROUNDCOVER

## Formal Geometric Design Characteristics

1. Use of geometric forms— squares
2. Structured, defined architectural look
3. Straight edges on plant beds and 90 degree corners
4. Plants in long, linear rows
5. Use of well defined, linear lawn panels
6. Long open viewsheds



# Optional Planting Plan Layout Formal Contemporary Design

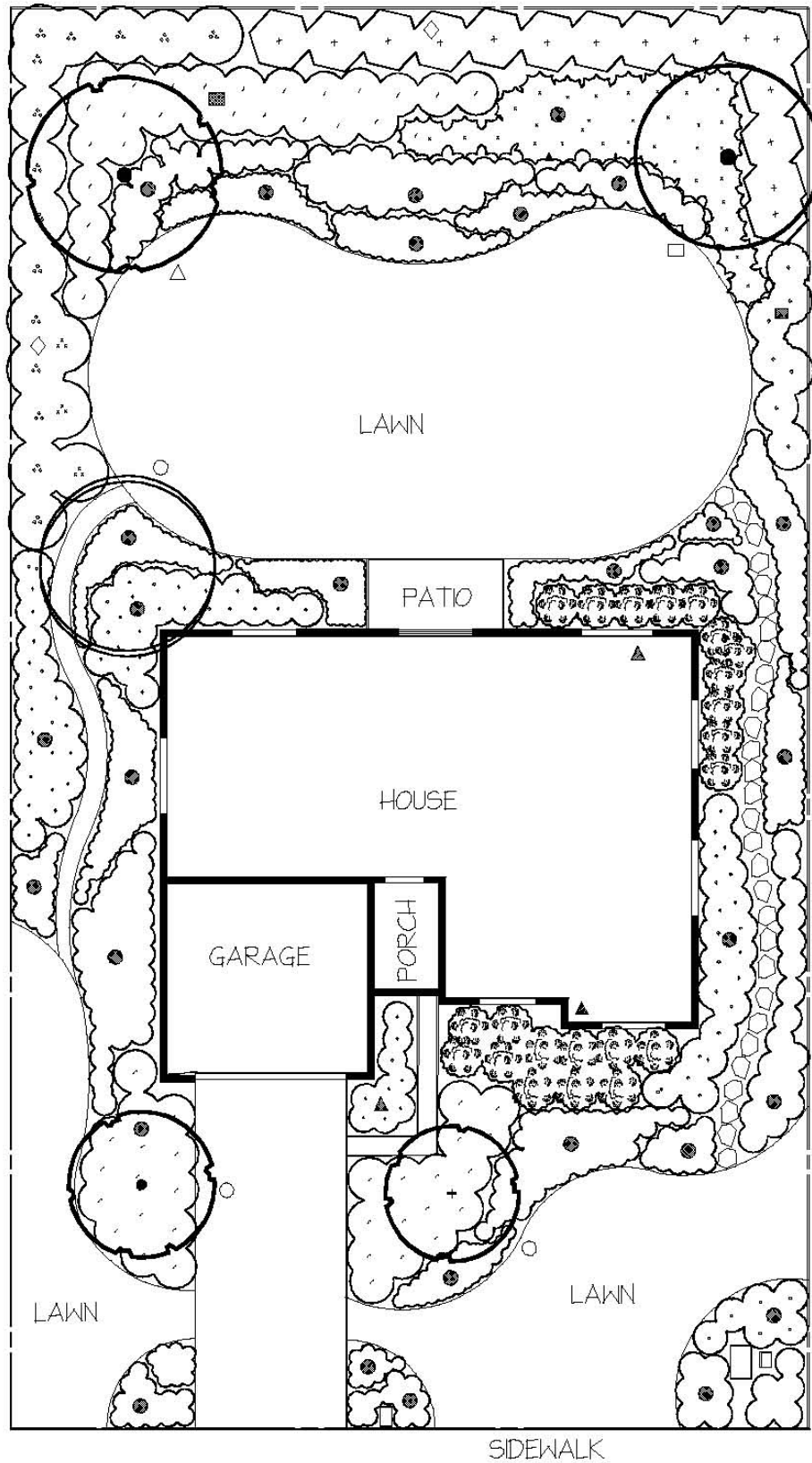


- LARGE TREE
- △ MEDIUM TREE
- SMALL TREE
- ◇ LARGE SHRUB
- MEDIUM SHRUB
- ▲ SMALL SHRUB
- GROUND COVER

- ### Formal Contemporary Design Characteristics
1. Use of geometric forms-circle segments
  2. Symmetrical balance in the layout
  3. Organized around a central axis
  4. Well defined lawn panels
  5. Use of trees to frame a view
  6. Straight edges in plant beds



## Optional Planting Plan Layout Informal Naturalistic Design



□	LARGE TREE
△	MEDIUM TREE
○	SMALL TREE
◇	LARGE SHRUB
■	MEDIUM SHRUB
▲	SMALL SHRUB
●	GROUNDCOVER

### Informal Naturalistic Design Characteristics

1. Meandering pathways and bedlines
2. Use of materials in natural forms, such as stepping stones and weathered wood
3. Use of forms that mimic nature
4. Use of organic, free flowing forms
5. Curving, sweeping areas of lawn
6. Curvilinear edges on plant beds



The plant group/site condition is listed here

# Using the Design Tip Sheets

## Group A1- Front Entry



Photos of each site condition addressed in the plant groups are included to help the reader recognize the design considerations

**Before Photo:** This box describes the condition illustrated in the photo, including maintenance and design considerations

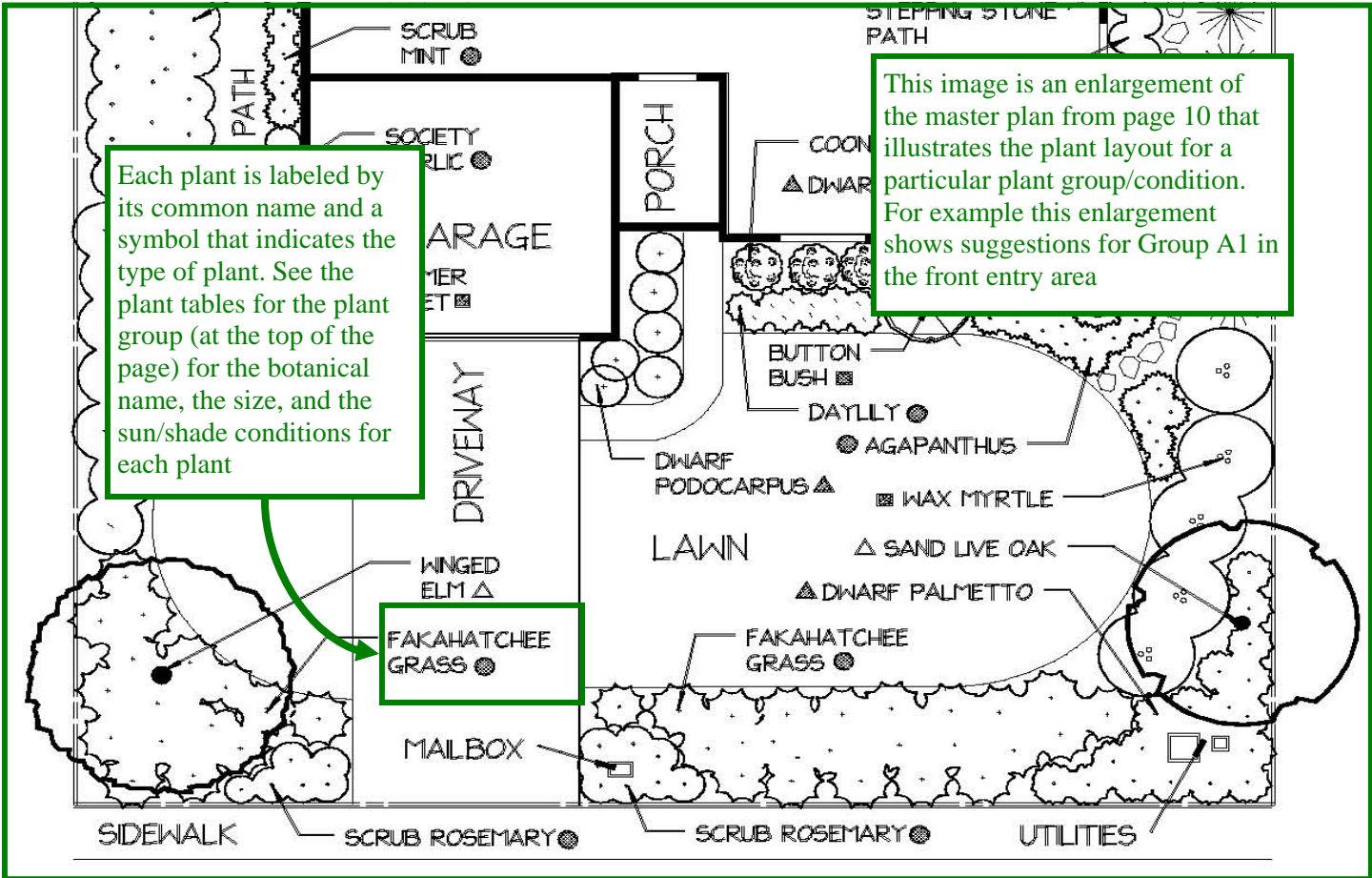
### Desired Characteristics

Look here for the desired aesthetic and structural characteristics of the plants. Comments include the growth habit, texture, form, size, and maintenance issues.

- LARGE TREE
- △ MEDIUM TREE
- SMALL TREE
- ◇ LARGE SHRUB
- MEDIUM SHRUB
- ▲ SMALL SHRUB
- GROUND COVER

The key shows the symbols indicating the type of plant on the master planting plan

**Design Tips**  
Look here for design tips and ideas on choosing plants and locating them for function, maintenance, aesthetics, and safety.



Each plant is labeled by its common name and a symbol that indicates the type of plant. See the plant tables for the plant group (at the top of the page) for the botanical name, the size, and the sun/shade conditions for each plant

This image is an enlargement of the master plan from page 10 that illustrates the plant layout for a particular plant group/condition. For example this enlargement shows suggestions for Group A1 in the front entry area



# Design Tip Sheet

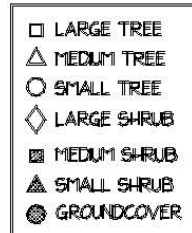
## Group A1- Front Entry



**Before Photo:** Existing plants on left of path are too large for the small plant bed and must be trimmed frequently to keep front entry clear for walking

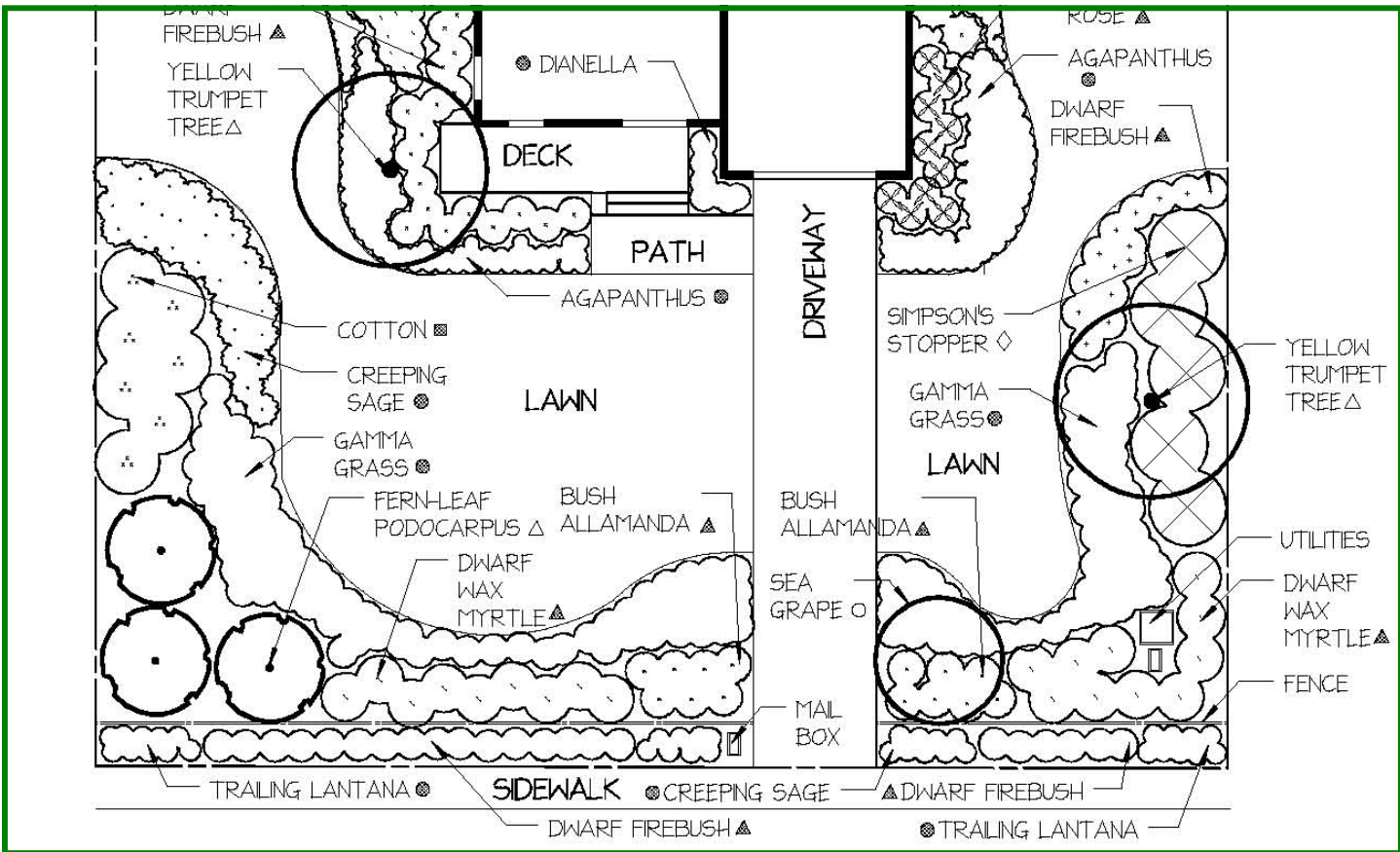
### Desired Characteristics

- Low growing
- Compact, medium to small
- Clean growth habit
- Colorful
- Medium or coarse texture
- Bold forms, unique shape or texture



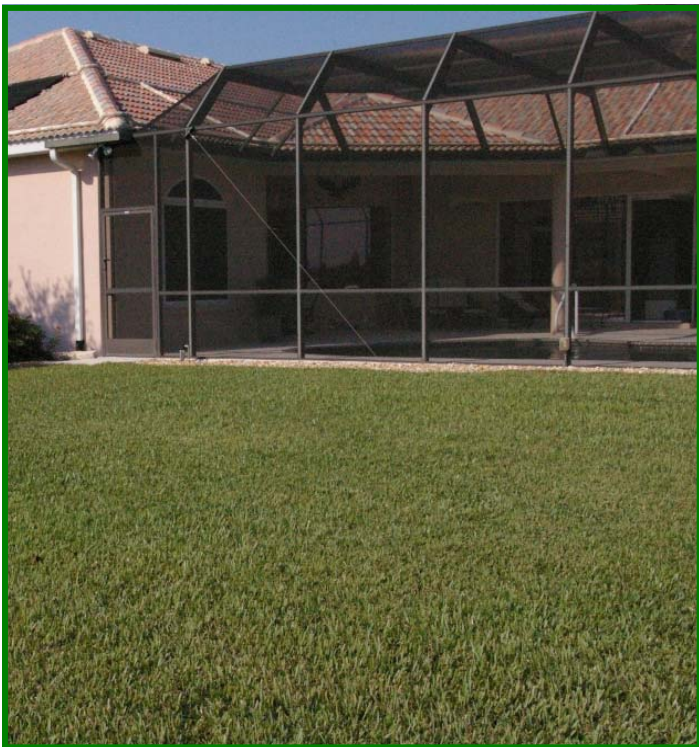
### Design Tips

- Place low/small plants with compact growth habit next to the walkway to reduce trimming
- Place interesting plants at natural viewpoints





# Design Tip Sheet Group A1- Patios



**Before Photo:** Lack of plants creates an exposed, unattractive patio with no colorful plants for interest and no tree canopy for shade

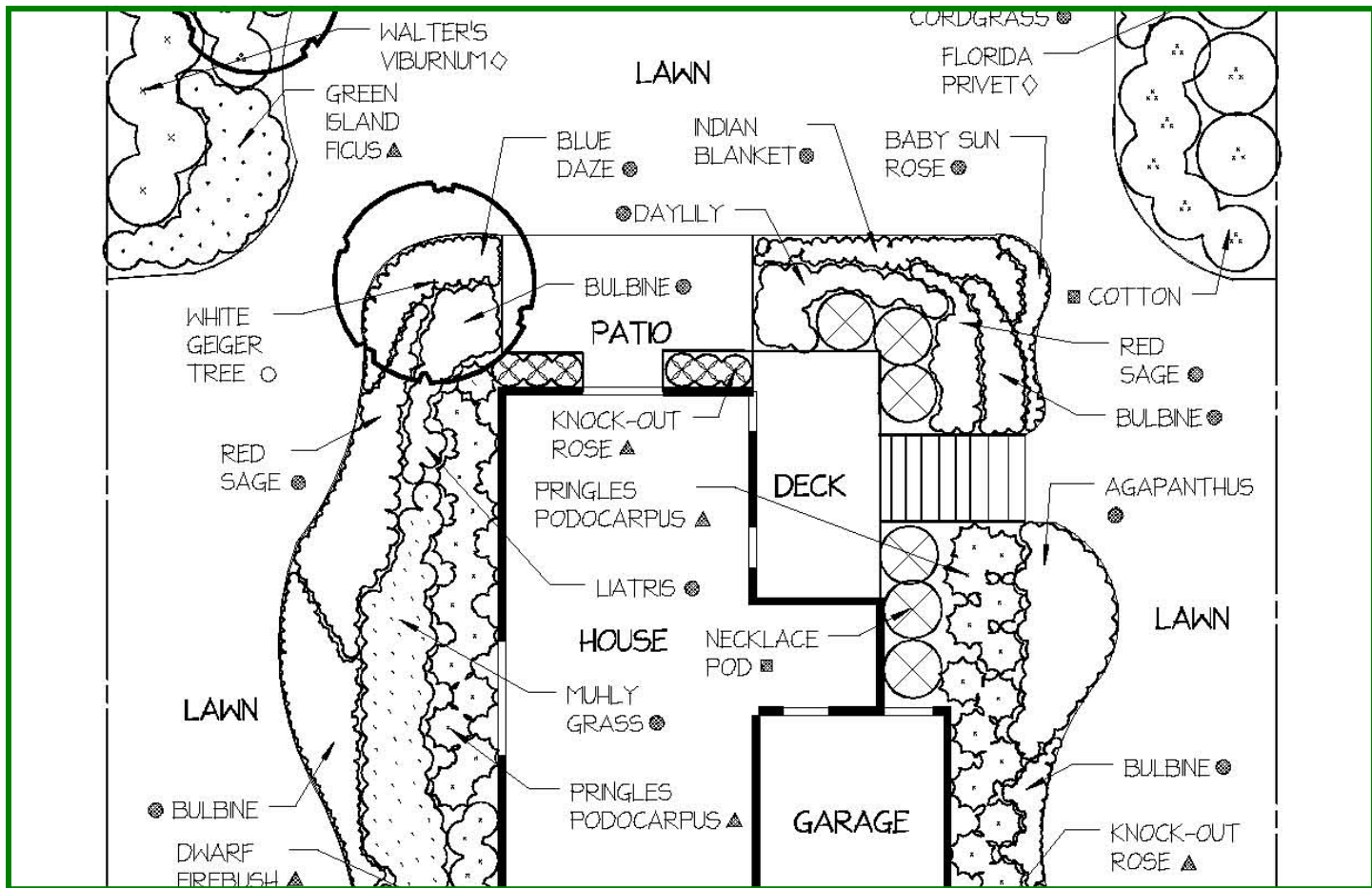
## Desired Characteristics

- Low growing, compact
- Clean growth habit
- Colorful
- Medium or coarse texture
- Wide canopy trees
- Bold forms, unique shape, size or texture

□	LARGE TREE
△	MEDIUM TREE
○	SMALL TREE
◇	LARGE SHRUB
■	MEDIUM SHRUB
▲	SMALL SHRUB
●	GROUNDCOVER

## Design Tips

- Place interesting plants at natural viewpoints
- Locate plants with a coarse texture closest to the patio to make the space feel smaller or use fine texture close to the patio to make the space feel larger







# Design Tip Sheet

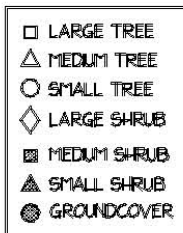
## Group A2– Sidewalks and Walkways

**Before Photos:** Right photo: Shrubs are too large and stiff texture for the paver walkway. Bottom photo: shrubs along the sidewalk have outgrown planter area and require frequent trimming to keep clear



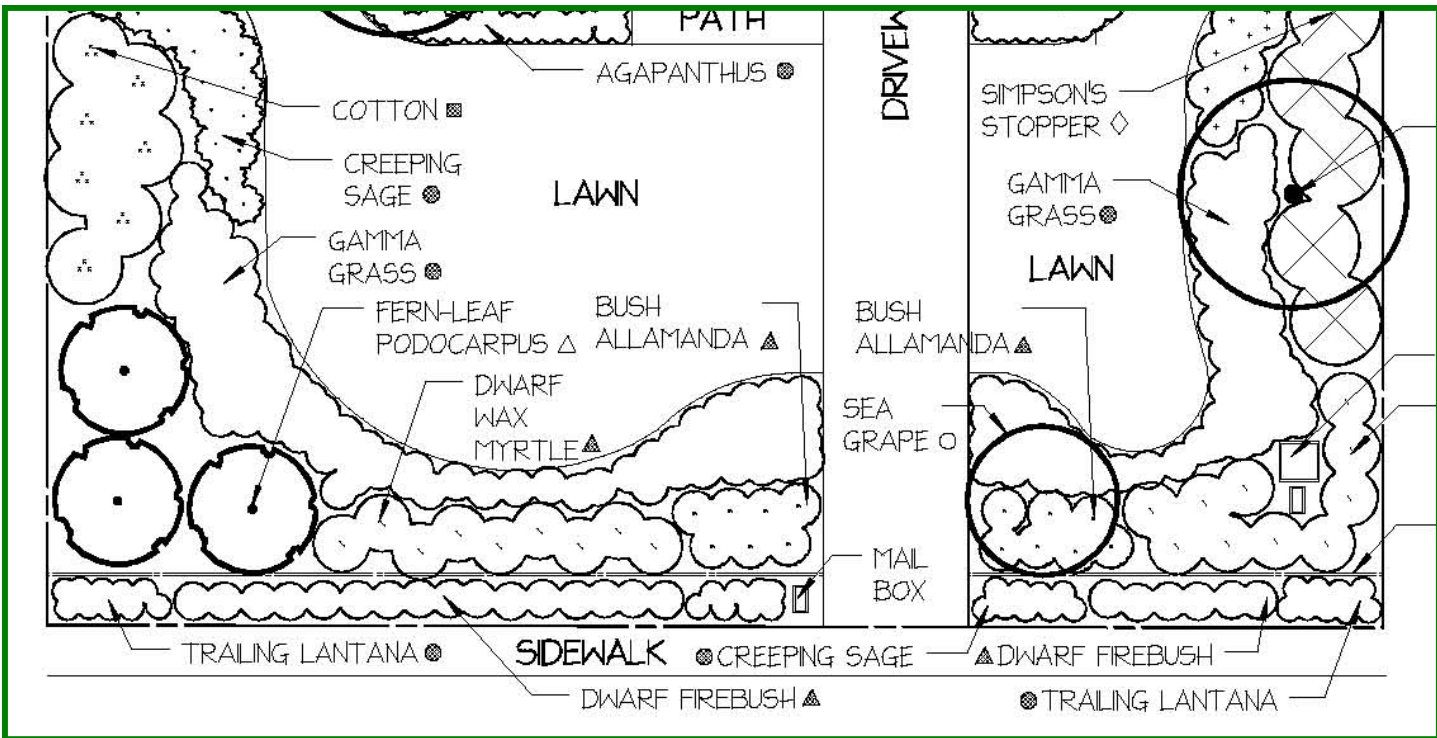
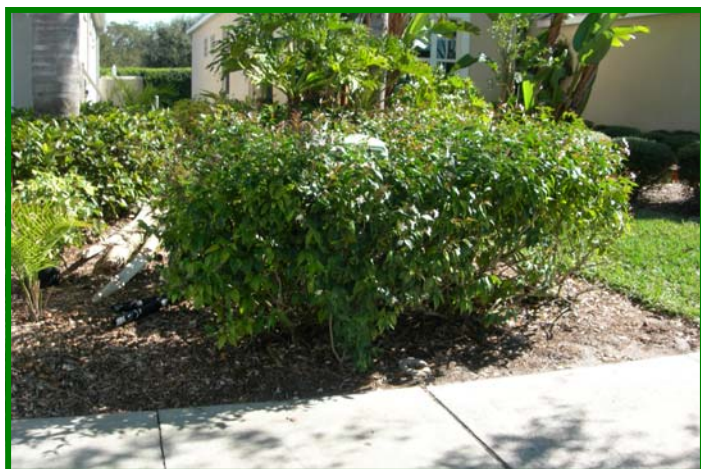
### Desired Characteristics

- Low growing
- Non-sprawling
- Clumping
- Easy to trim/mow-able
- Soft texture
- Interesting shapes and color



### Design Tips

- Reduce trimming and edging by placing plants with clean, compact growth habits closest to walkways
- Avoid plants that attract biting or stinging insects
- Use plants with interesting textures, shapes and colors for close viewing
- Use plants that will not outgrow the planter area
- Plants with soft foliage and flexible branches do not have to be trimmed as often





# Design Tip Sheet

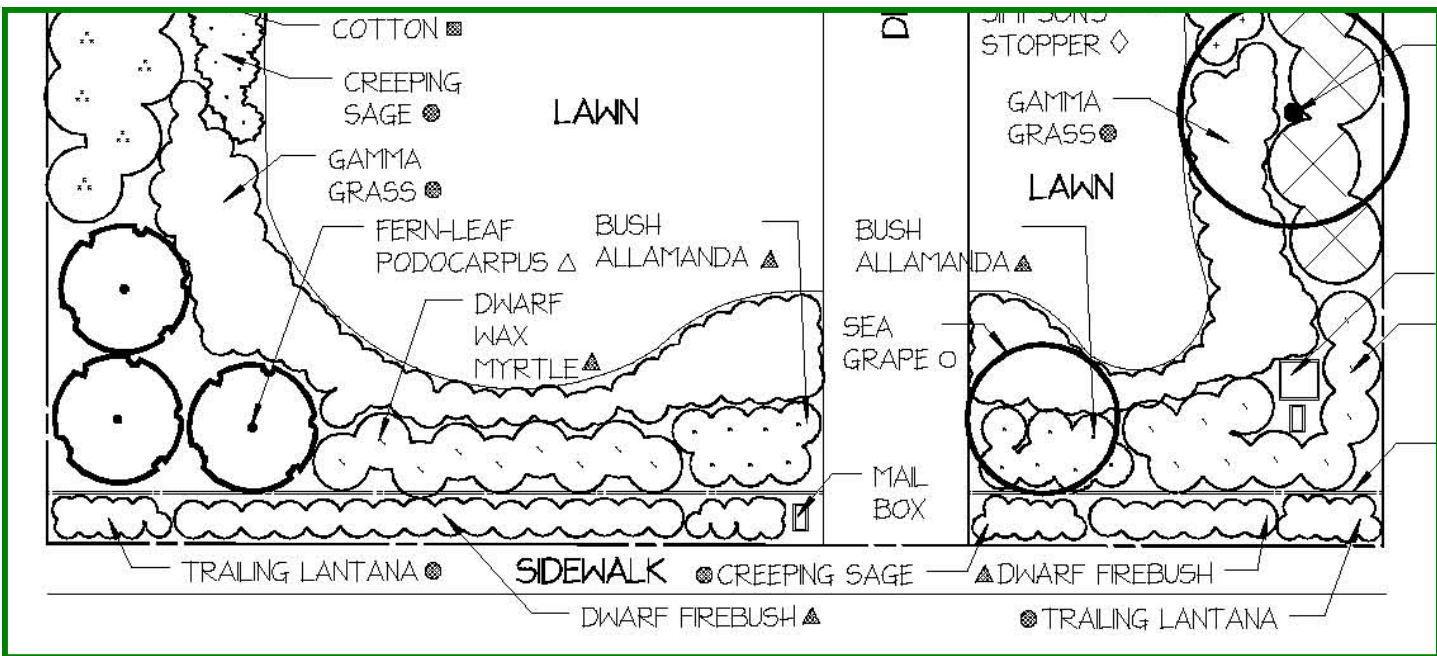
## Group A3– Mailboxes and Utilities



**Before Photos:** Left photo: Mailbox covered with plants obstructs access and invites insects  
 Bottom photo: Too large shrubs have been over-trimmed leaving utilities exposed on top and no access in the front



- ### Desired Characteristics
- Low/medium shrubs
  - Clean growth habit
  - Soft foliage, no thorns
  - No flowers that attract bees
- |   |              |
|---|--------------|
| □ | LARGE TREE   |
| △ | MEDIUM TREE  |
| ○ | SMALL TREE   |
| ◇ | LARGE SHRUB  |
| ■ | MEDIUM SHRUB |
| ▲ | SMALL SHRUB  |
| ● | GROUNDCOVER  |
- ### Design Tips
- Keep plants that attract stinging or biting insects at least 2’ below mailbox
  - Check with the US Postal service for mailbox requirements regarding plants
  - Consult with local utility company for planting regulations for above and below ground utilities
  - Consider the height of the utility when choosing plants
  - Leave a 2-3’ open space around utility for access
  - Leave a small footpath for access in large plant beds





## Design Tip Sheet

### Group B1– Under Windows

**Before Photo:** Plant material is too tall for the window, dense foliage makes access difficult to hang storm shutters and clean windows



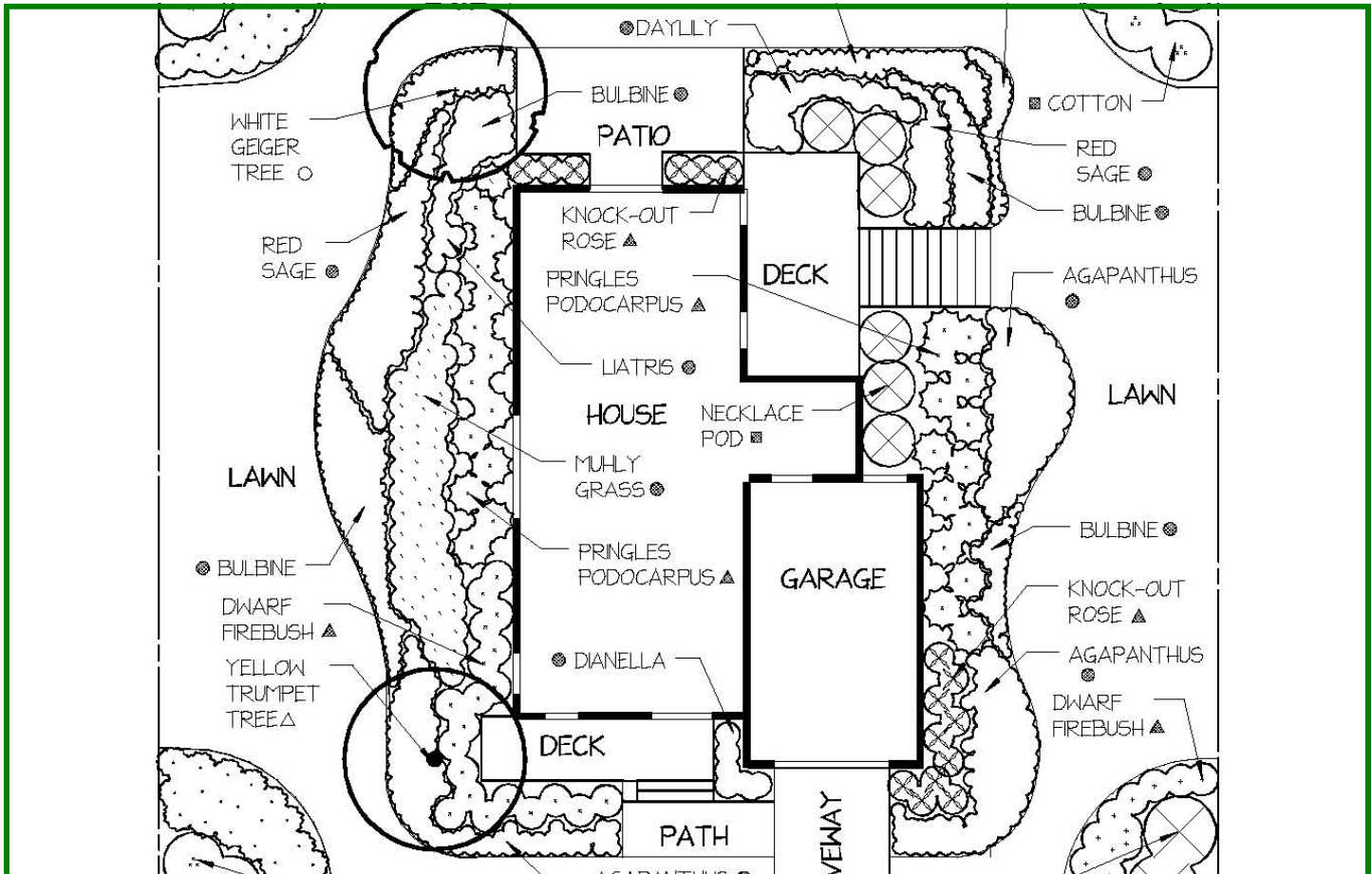
#### Desired Characteristics

- Low/medium shrubs
- Soft/fine texture
- Loose foliage
- Easy to trim
- Flexible branches
- No thorns or prickly leaves

□	LARGE TREE
△	MEDIUM TREE
○	SMALL TREE
◇	LARGE SHRUB
■	MEDIUM SHRUB
▲	SMALL SHRUB
●	GROUND COVER

#### Design Tips

- Avoid blocking views by choosing plants with medium compact size
- Choose plants with a loose, open branching pattern if you want to block a view but let in light
- Choose shrubs with a tidy growth habit and plant for easy access for cleaning and hanging storm shutters
- Avoid stiff, thorny plants that would prevent exiting from windows and cause injuries during maintenance





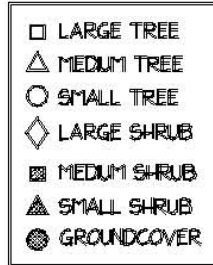
## Design Tip Sheet Group B2– Along Walls

**Before Photo:** Large shrubs require frequent pruning to fit in small space along walls. Maintenance is difficult with plants against house. Lack of air space between house and plants encourages growth of mold and mildew



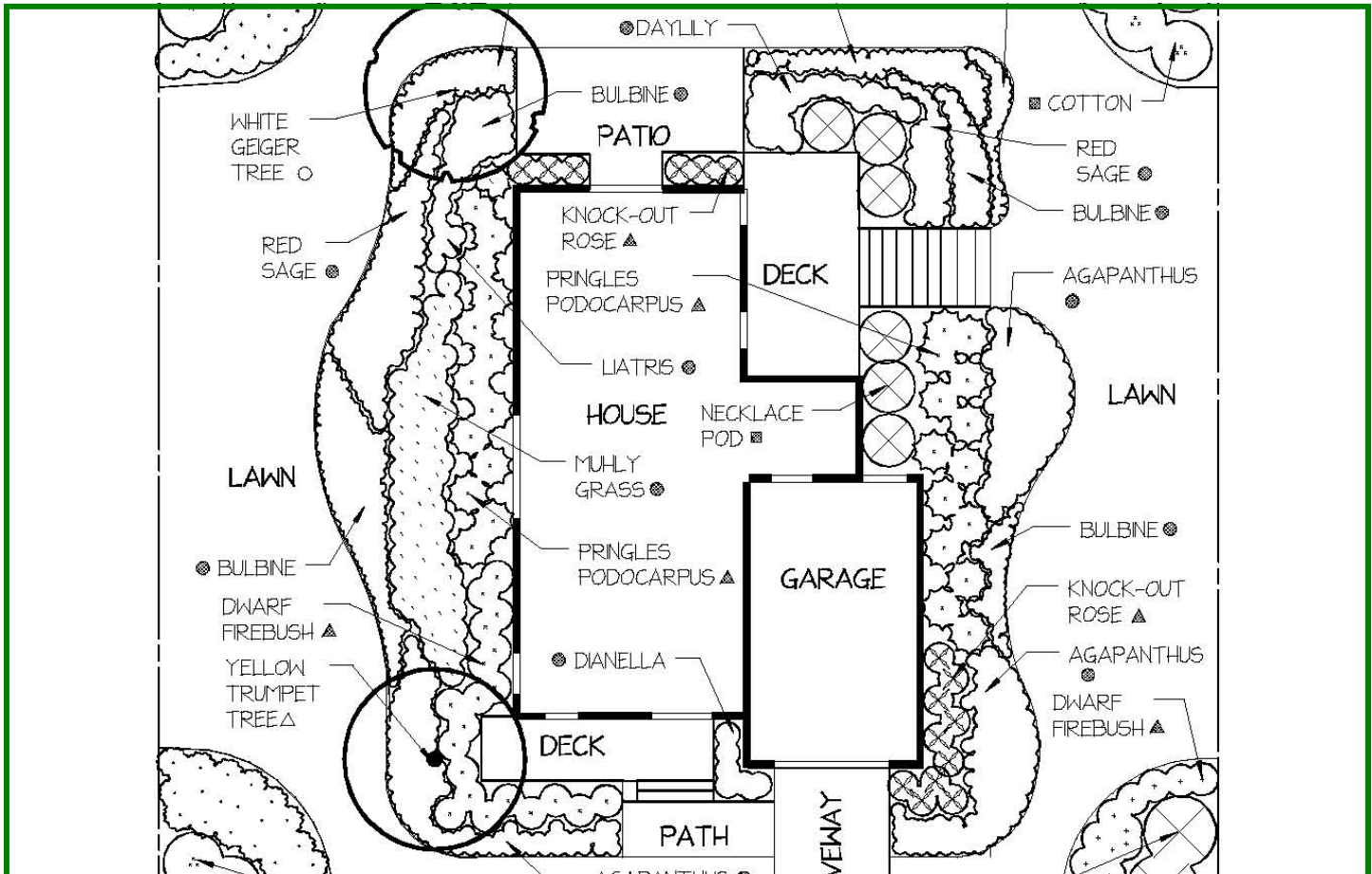
### Desired Characteristics

- Medium/tall shrubs
- Soft/fine texture
- Loose foliage
- Flexible branches



### Design Tips

- Leave a 2' wide strip of gravel between the wall and the plant material for maintenance access and air circulation (reduces mold and mildew growth)
- Choose shrubs with a tidy growth habit to reduce trimming
- Choose plants that are color compatible with the wall color
- Choose shrubs that will not outgrow the planter space and the vertical space





# Design Tip Sheet

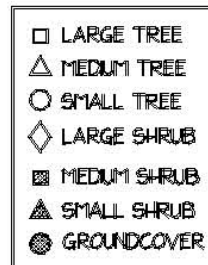
## Group C1– Along Property Lines

**Before Photo:** Gaps in the planting leave a view to neighbors exposed and lack screening for privacy. Replace with trees and shrubs to create a buffer



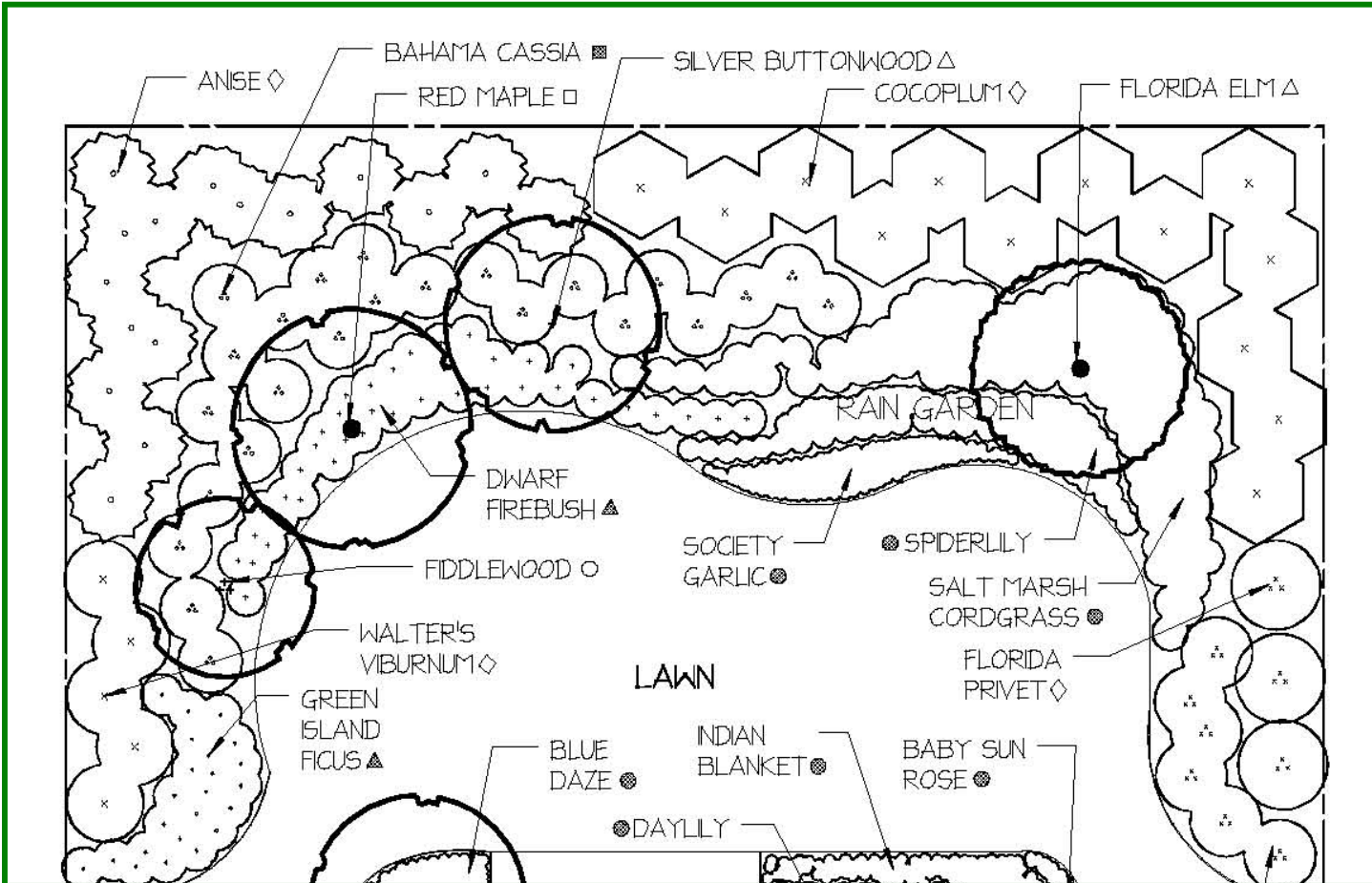
### Desired Characteristics

- Dense foliage
- Upright form
- Evergreen
- Sturdy
- Fast growing
- Larger tree canopies



### Design Tips

- Choose fast growing plants with dense growth habits for screening and privacy
- Select evergreen plants with appropriate height to block unwanted views
- Vary the height of plants for more interest
- Use trees to block views of overhead utilities but don't plant directly beneath the overhead wires
- Mix shrubs and trees for low and high screening
- Consider the view from patio and windows





# Design Tip Sheet

## Group C2– Along Fences

**Before Photo:** – Top Photo: The fence is hidden by shrubs that are too large, over-trimmed, and poorly shaped for the desired aesthetics



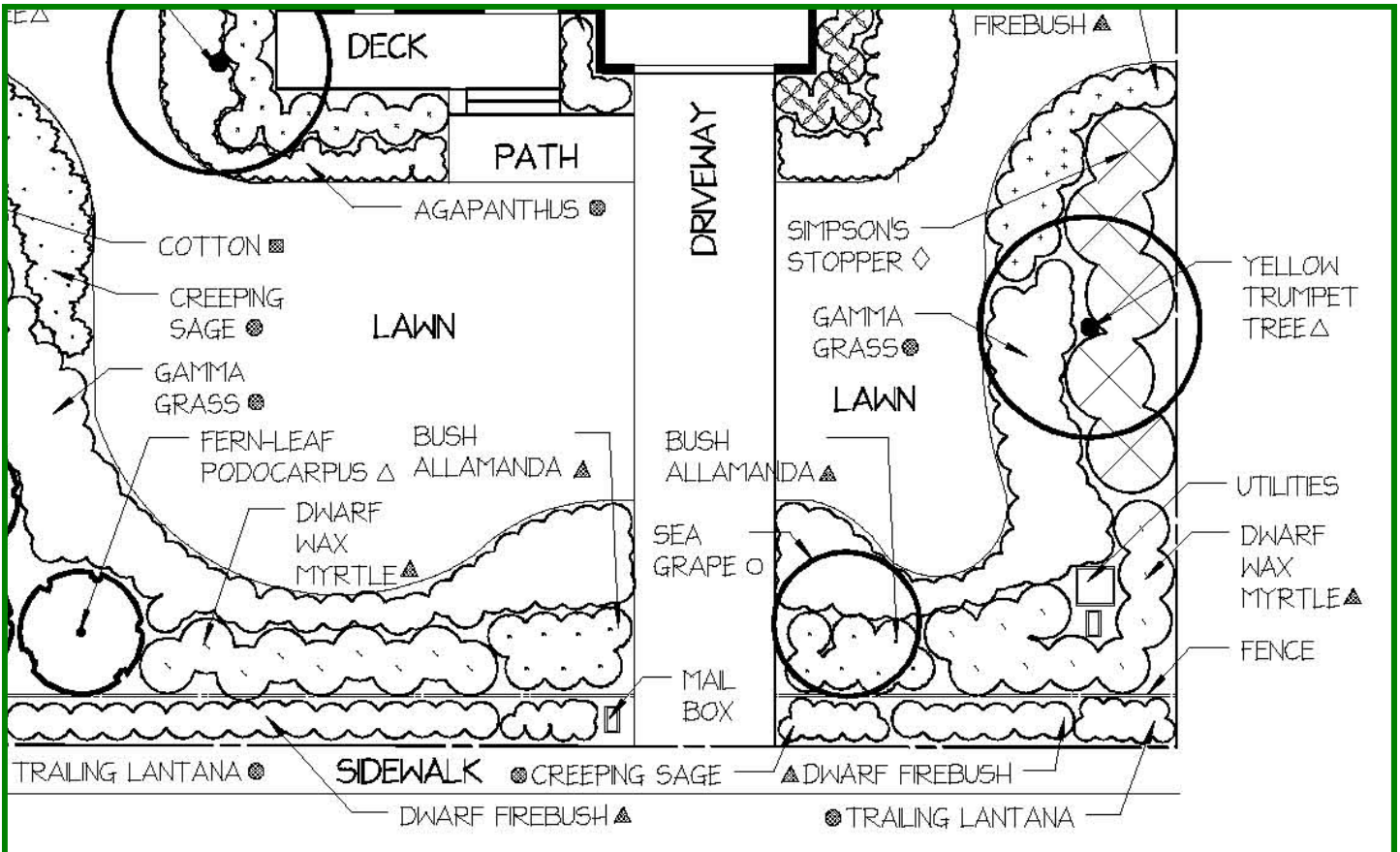
### Characteristics

- Tall fence– dense foliage
- Tall fence– upright form
- Tall fence– fast growing
- Short fence– full arching grasses
- Short fence- soft, clumping plants
- Colorful
- Evergreen

□	LARGE TREE
△	MEDIUM TREE
○	SMALL TREE
◇	LARGE SHRUB
▣	MEDIUM SHRUB
▲	SMALL SHRUB
●	GROUNDCOVER

### Design Tips

- For decorative fence choose low growing plants that accentuate decorative elements, such as caps. For utilitarian fences (chain link or stockade) choose taller shrubs that will cover the fence.
- In back yards– place plants with coarse textures against fences to make the space appear smaller or use fine texture to make the space appear larger





## Design Tip Sheet

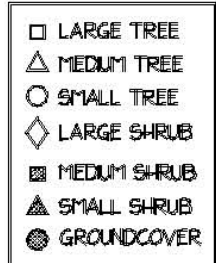
### Group D-Under Trees

**Before Photos:** Top photo: The sod is in poor condition and will not grow well in the deep shade. Large shrubs planted too close to base of tree require frequent pruning to fit under tree canopy.



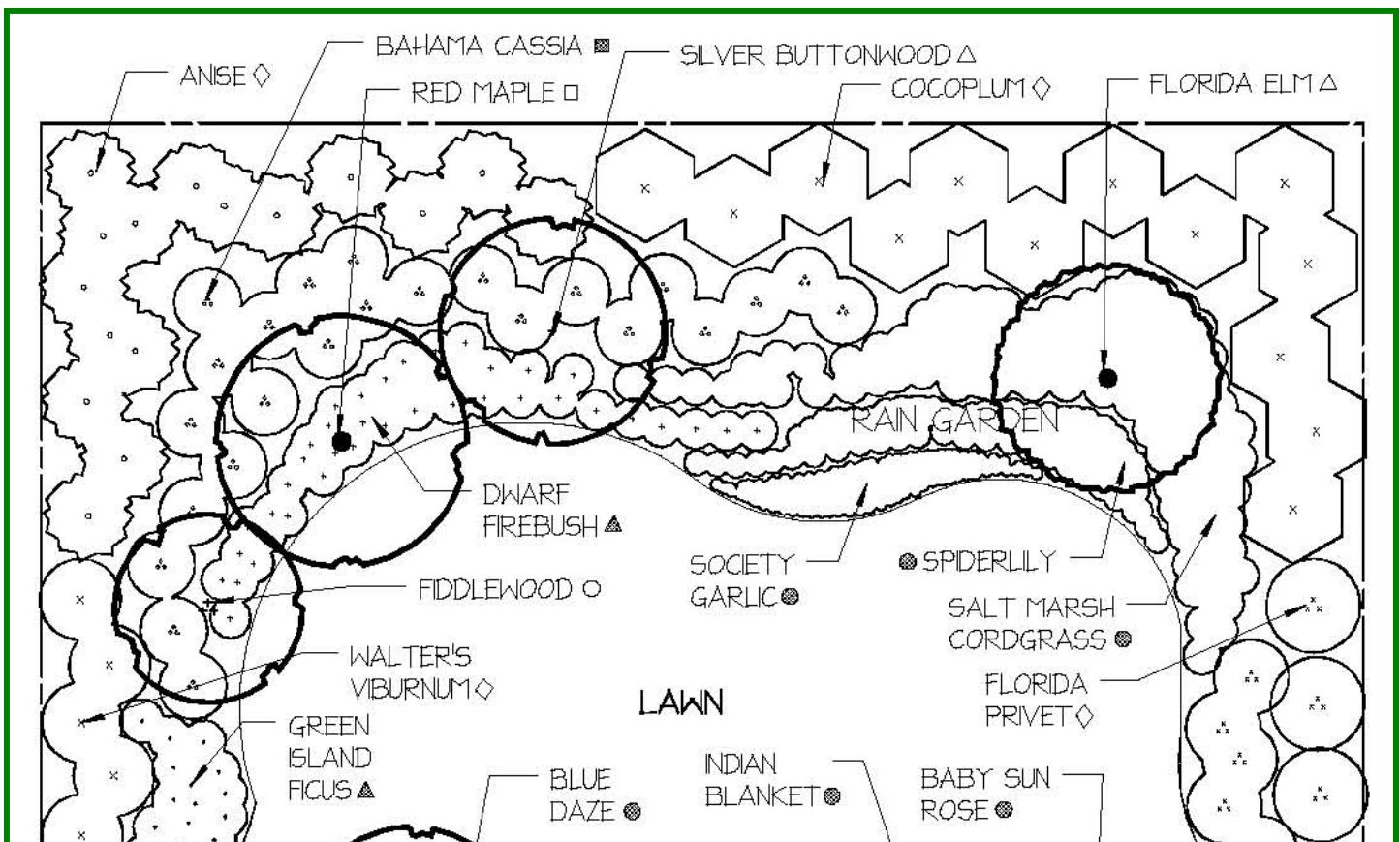
#### Desired Characteristics

- Shallow roots
- Clumpers
- Vines with spreading growth habit
- Shade tolerant



#### Design Tips

- Use plants that look good with fallen leaves or plants that will hide leaves.
- Install small plants (small root balls) to avoid root damage to both plant and tree.
- Consider the density of the shade from the tree canopy (filtered, or deep shade)
- Don't place small clumping groundcover in single lines (rings) around base of tree, masses are better
- Use a large planted area under tree to balance the canopy mass and protect trunk from mower





## Design Tip Sheet

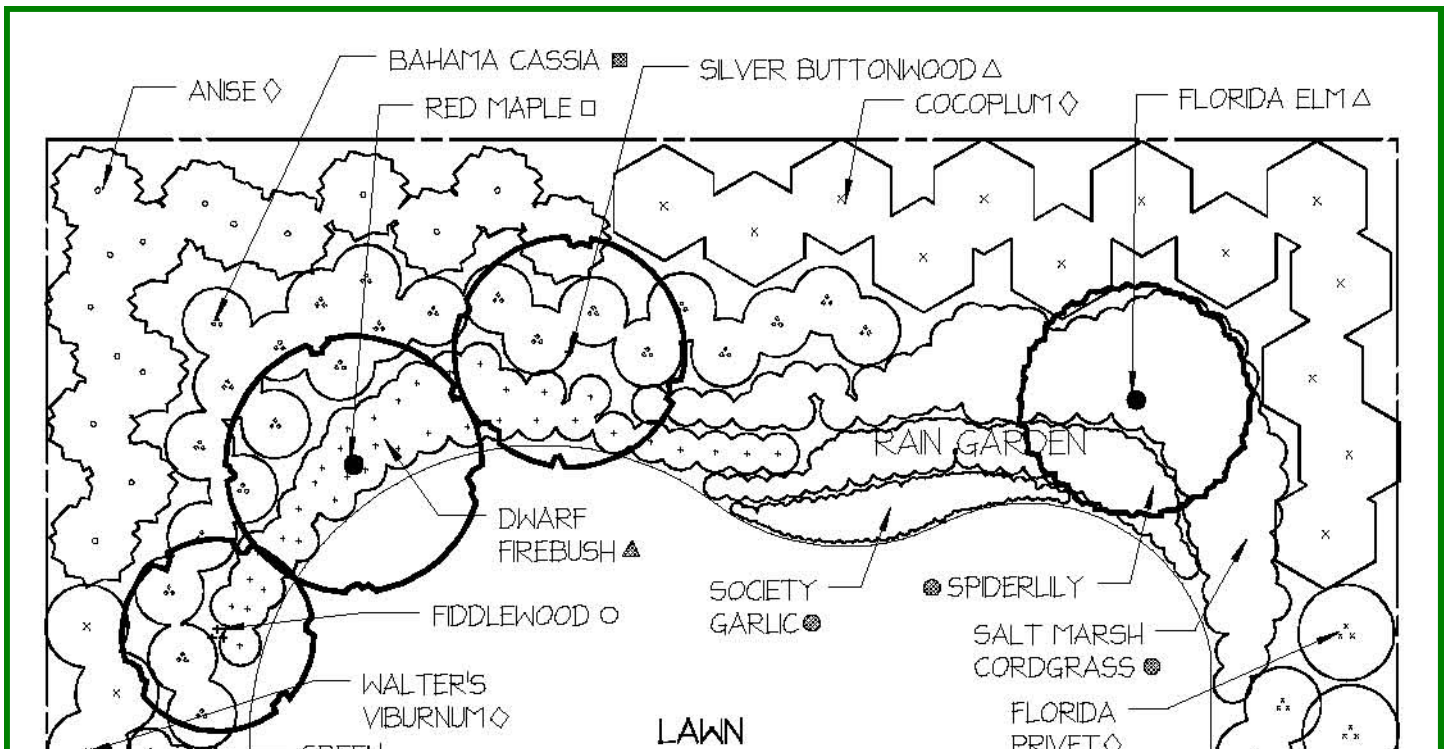
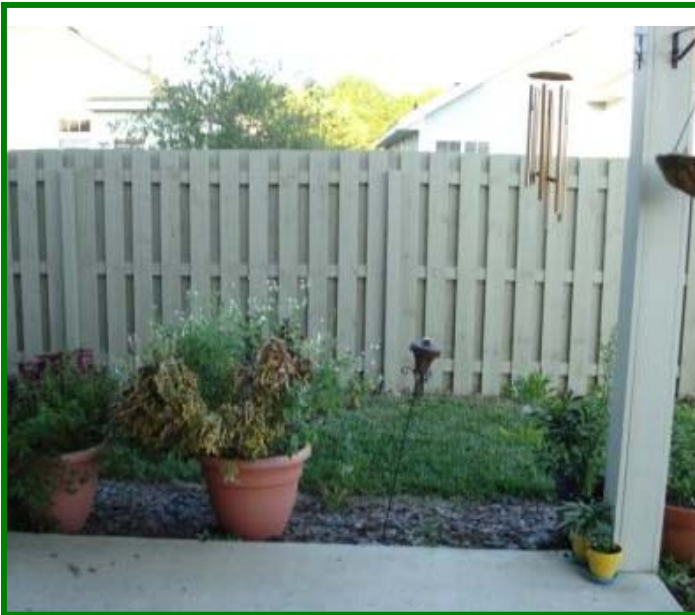
### Group E– Specialty Gardens: Butterfly, Rain, and Water Edge

**Before Photo:** Left photo: Small side areas by patios and fences are often un-used. Make them more appealing and functional with a specialty garden

**Right photo:** Sod to the water's edge allows fertilizer, herbicides, and grass clippings to flow into the water

#### Design Tips

- Butterfly Garden– Butterfly gardens are best next to patios for viewing. Provide host and nectar plants for caterpillars and butterflies. Best colors are reds and yellows
- Water edge– Plant a 10 foot wide maintenance buffer of aquatic and shoreline plants that does not require fertilizer, herbicides or mowing to maintain
- Rain Garden– choose plants that will survive wet and dry conditions







# Plant Tables

## Recommended Plants for Site Conditions

### Plant Tables

Recommended plants for each of the plant groups/site conditions have been organized in a table for easy reference. For example, all the plants that are appropriate for Group A: A1-Front Entries and Patios, A2-Sidewalks and Walkways, and A3-Mailboxes and Utilities, are listed in a separate table labeled Group A.

Plants are organized in the table based on their types: trees, shrubs, groundcover, or vines, on their size: small, medium, or large, and on their sun/shade tolerance. Wild flowers and grasses are listed on a separate table.

Each plant is listed with both botanical name and common name to eliminate confusion between common names in different regions. An asterisk (\*) beside a name indicates a native plant for Florida.

The master plan layout for each zone show examples with specific plants for each condition, however, any plant listed on the plant table for that condition is appropriate for use in the planting plan. Choose options from the list based on the sun and shade requirements, the height of windows and fences, the views to be blocked, and the color and materials of the house. Also consider the Florida-Friendly and general design principles listed on page 3.

The plant tables in this publication list plants for USDA Hardiness Zone 10A, 10B, and 11 only. Tables in companion publications list plants for zones 8A and 8B, and 9A and 9B.

The tables are organized in the following order:

**Table 1- Group A1, A2, and A3:**

Front Entries and Patios, Along Sidewalks and Walkways, Around Mailboxes and Utilities

**Table 2- Group B1 and B2:**

Under Windows and Along Walls

**Table 3- Group C1 and C2:**

Along Property Lines and Fences

**Table 4- Group D:**

Under Trees

**Table 5- Group E:**

Specialty Gardens– Rain Gardens, Water Edge, Butterfly Gardens

**Table 6- Wildflowers and Grasses**



Plant labels from Vera Lea Rinker Native Plant Garden, Stetson University, DeLand, Florida

## Group A1, A2, A3- Front Entries/Patios, Sidewalks/Walkways, Mailboxes/Utilities

**Characteristics:** Low growing and compact, colorful, medium/ coarse texture, bold forms, clean growth habit, unique shape, form size, and or texture, overhead branching, soft foliage, clumping/mounding

### SUN

### SHADE

### SHRUBS

- *Allamanda nerifolia* (Bush Allamanda)
- *Euryops* (Bush Daisy)
- *Ficus microcarpa* 'Green Island' (Green Island Ficus)
- *Hamelia patens* 'Nana' (Dwarf Firebush)
- *Ilex vomitoria* 'Nana' (Dwarf Yaupon Holly) \*
- *Pittosporum tobira* 'Wheeler's Dwarf' (Dwarf Podocarpus)
- *Podocarpus* 'Pringles' (Dwarf Podocarpus)
- *Raphiolepis indica* (Dwarf Indian Hawthorne)
- *Rosa* spp. (Knock Out Rose)
- *Vaccinium darrowii* (Darwin's Blueberry) \*
- *Viburnum obovatum* 'Densa' (Dwarf Walter's Viburnum) \*

- *Ficus microcarpa* 'Green Island' (Green Island Ficus)
- *Ilex vomitoria* (Dwarf Yaupon Holly) \*
- *Philodendron* 'Xanadu' (Xanadu)
- *Pittosporum tobira* 'Wheeler's Dwarf' (Dwarf Podocarpus)
- *Podocarpus* 'Pringles' (Dwarf Podocarpus)
- *Psychothria nervosa* 'Nana' (Dwarf Coffee) \*
- *Raphiolepis indica* (Dwarf Indian Hawthorne)
- *Sabal minor* \*

### Small

- *Argusia gnaphalodes* (Sea Lavender) \*
- *Capparis cynophallophora* (Jamaican Capper) \*
- *Duranta erecta* 'Gold Mound' (Dwarf Golden Dewdrop)
- *Galphimia glauca* (Thyallis)
- *Jasmine multiflorum* (Downy Jasmine)
- *Jatropha integerrima* (Peregrina)
- *Lyonia ferruginea* (Rusty Lyonia) \*
- *Myrcianthes fragrans* 'Compacta' (Dwarf Simpson's Stopper) \*
- *Myrica cerifera* 'Pumila' (Dwarf Wax Myrtle) \*
- *Pittosporum tobira* (Pittosporum)
- *Senna mexicana* 'Chapmanii' (Bahama Cassia) \*
- *Sophora tomentosa* (Necklacepod) \*
- *Suriana maritima* (Bay Cedar) \*

- *Ilex opaca* 'Burfordii Compacta' (Dwarf Burford Holly)
- *Myrcianthes fragrans* 'Compacta' (Dwarf Simpson's Stopper) \*
- *Philodendron* 'Selloum' (Split-leaf Philodendron)
- *Philodendron* 'Xanadu' (Xanadu)
- *Pittosporum tobira*
- *Raphiolepis indica* (Indian Hawthorne)
- *Podocarpus macrophyllus* (Podocarpus)

### Medium

## GROUNDCOVERS

- |  |  |
|--|--|
| <ul style="list-style-type: none"> <li>• <i>Agapanthus</i> spp. (Lily of the Nile)</li> <li>• <i>Aptenia cordifolia</i> (Baby Sun Rose)</li> <li>• <i>Arachis glabrata</i> (Perennial Peanut)</li> <li>• <i>Bulbine</i> spp.</li> <li>• <i>Dietes vegeta</i> (African Iris)</li> <li>• <i>Ernodea littoralis</i> (Beach Creeper) *</li> <li>• <i>Evolvulus</i> (Blue Daze)</li> <li>• <i>Gaillardia pulchella</i> (Blanket Flower) *</li> <li>• <i>Helianthus debilis</i> (Beach Sunflower) *</li> <li>• <i>Hemerocallis</i> spp. (Daylily)</li> <li>• <i>Ipomoea imperati</i> (Beach Morning Glory) *</li> <li>• <i>Iva imbricata</i> (Beach Elder) *</li> <li>• <i>Lantana montevidensis</i> (Trailing Lantana) *</li> <li>• <i>Licania michauxii</i> (Gopher Apple) *</li> <li>• <i>Liriope muscari</i> (Monkey Grass)</li> <li>• <i>Mimosa strigillosa</i> (Sunshine Mimosa) *</li> <li>• <i>Ophiopogon japonica</i> (Mondo Grass)</li> <li>• <i>Phyla nodiflora</i> (Fogfruit) *</li> <li>• <i>Salvia misella</i> (Creeping Sage) *</li> <li>• <i>Sesuvium portulacastrum</i> (Seaside Purslane) *</li> <li>• <i>Tulbaghia violacea</i> (Society Garlic)</li> <li>• <i>Zamia floridana</i> (Coontie) *</li> </ul> | <ul style="list-style-type: none"> <li>• <i>Ajuga reptans</i> (Ajuga)</li> <li>• <i>Crytomium falcatum</i> (Holly Fern) *</li> <li>• <i>Dianella tasmanica</i> (Flax Lily)</li> <li>• <i>Dietes vegeta</i> (African Iris)</li> <li>• <i>Liriope muscari</i> (Monkey Grass)</li> <li>• <i>Ophiopogon japonica</i> (Mondo Grass)</li> <li>• <i>Osmunda cinnamomea</i> (Cinnamon Fern) *</li> <li>• <i>Woodwardia areolata</i> (Netted Chain Fern) *</li> <li>• <i>Zamia floridana</i> (Coontie) *</li> </ul> |
|--|--|

\*Also see table of wildflowers and ornamental grasses

## SPECIMEN TREES

	<ul style="list-style-type: none"> <li>• <i>Ardisia escallonioides</i> (Marlberry) *</li> <li>• <i>Baccharis halimifolia</i> (Salt-bush) *</li> <li>• <i>Callistemon</i> spp. (Bottlebrush)</li> <li>• <i>Cordia boissieri</i> (White Geiger) *</li> <li>• <i>Citharexylum spinosum</i> (Fiddlewood) *</li> <li>• <i>Cornus foemina</i> (Swamp Dogwood) *</li> <li>• <i>Ilex vomitoria</i> 'Pendula' (Weeping Yaupon Holly) *</li> <li>• <i>Ilex vomitoria</i> (Yaupon Holly) *</li> <li>• <i>Ilex x attenuata</i> 'Savannah' (Savannah Holly)</li> <li>• <i>Jatropha integrima</i> (Jatropha)</li> <li>• <i>Ligustrum japonicum</i> (Privet)</li> <li>• <i>Myrica cerifera</i> (Wax Myrtle) *</li> <li>• <i>Myricanthes fragrans</i> (Simpson's Stopper) *</li> <li>• <i>Pseudophoenix sargentii</i> (Buccaneer Palm) *</li> <li>• <i>Senna polyphylla</i> (Desert Cassia) *</li> </ul>	<p><b>Small</b></p>
<ul style="list-style-type: none"> <li>• <i>Ardisia escallonioides</i> (Marlberry) *</li> <li>• <i>Cornus foemina</i> (Swamp Dogwood) *</li> <li>• <i>Ilex cassine</i> (Dahoon Holly) *</li> <li>• <i>Ilex opaca</i> 'Arenicola' (Scrub Holly) *</li> <li>• <i>Ilex x attenuata Savannah</i> (Savannah Holly) *</li> <li>• <i>Ilex vomitoria</i> (Yaupon Holly) *</li> <li>• <i>Ilex vomitoria</i> 'Pendula' (Weeping Yaupon Holly) *</li> <li>• <i>Ligustrum japonicum</i> (Privet)</li> <li>• <i>Myricanthes fragrans</i> (Simpson's Stopper) *</li> </ul>	<ul style="list-style-type: none"> <li>• <i>Chionanthus virginicus</i> (Fringe Tree) *</li> <li>• <i>Conocarpus erectus</i> 'Sericeus' (Silver Buttonwood) *</li> <li>• <i>Gordonia lasianthus</i> (Loblolly Bay) *</li> <li>• <i>Ilex cassine</i> (Dahoon Holly) *</li> <li>• <i>Juniperus virginiana</i> (Red Cedar) *</li> <li>• <i>Morus rubra</i> (Mulberry) *</li> <li>• <i>Parkinsonia aculeata</i> (Jerusalem Thorn)</li> <li>• <i>Pinus elliottii</i> 'Densa' (South Florida Slash Pine) *</li> <li>• <i>Podocarpus gracilior</i> (Fern-leaf Podocarpus)</li> <li>• <i>Quercus geminata</i> (Sand Live Oak) *</li> <li>• <i>Tabebuia argentea</i> (Yellow Trumpet Tree)</li> <li>• <i>Ulmus alata</i> (Winged Elm) *</li> <li>• <i>Ulmus americana</i> 'Floridana' (Florida Elm) *</li> </ul>	<p><b>Medium</b></p>

## SPECIMEN TREES

- *Acer rubrum* (Red Maple) \*
- *Conocarpus erectus* (Silver Buttonwood) \*
- *Pinus elliotii* var. *densa* (South Florida Slash Pine). \*
- *Quercus virginiana* (Live Oak) \*
- *Taxodium ascendens* (Pond Cypress) \*
- *Taxodium distichum* (Bald Cypress) \*

**Large**

## Group B1 and B2 – Under Windows and Along Walls

**Characteristics:** medium/ tall shrubs, soft/ fine texture, loose foliage, flexible branches, no thorns, easy to trim

### SUN

#### SHRUBS

- *Ardisia escallonioides* (Marlberry) \*
- *Argusia gnaphalodes* (Sea Lavender) \*
- *Callicarpa americana* (Beautyberry) \*
- *Capparis cynophallophora* (Jamaican Caper) \*
- *Erythrina herbacea* (Coral Bean) \*
- *Eugenia foetida* (Stopper) \*
- *Euryops* (Bush Daisy)
- *Forestiera segregata* (Florida Privet) \*
- *Gossypium hirsutum* (Cotton) \*
- *Hamelia patens* 'Compacta' (Dwarf Firebush)
- *Ilex vomitoria* 'Nana' (Dwarf Holly) \*
- *Lycium carolinianum* (Christmasberry) \*
- *Lyonia ferruginea* (Rusty Lyonia) \*
- *Myrcianthes fragrans* 'Compacta' (Dwarf Simpson's Stopper) \*
- *Myrica cerifera* 'Pumila' (Dwarf Wax Myrtle) \*
- *Podocarpus* 'Pringles' (Pringles Podocarpus)
- *Psychotria sulzneri* (Shiny Coffee) \*
- *Rapanea punctata* (Myrsine) \*
- *Rhaphiolepis indica* (Indian Hawthorn)
- *Rosa* spp. 'Knock Out' (Knock out Rose)
- *Senna mexicana* 'Chapmanii' (Bahama Cassia) \*
- *Sophora tomentosa* (Necklace Pod) \*
- *Suriana maritima* (Bay Cedar) \*
- *Vaccinium darrowii* (Darwin's Blueberry) \*
- *Viburnum obovatum* 'Densa' (Dwarf Walters Viburnum) \*

**Medium**

### SHADE

- *Ardisia escallonioides* (Marlberry) \*
- *Callicarpa americana* (Beautyberry) \*
- *Cephalanthus occidentalis* (Buttonbush) \*
- *Erythrina herbacea* (Coral Bean) \*
- *Hamelia patens* 'Nana' (Dwarf Firebush)
- *Illicium parviflorum* (Anise) \*
- *Itea virginica* (Sweet Spire) \*
- *Myrcianthes fragrans* 'Compacta' (Dwarf Simpson's Stopper) \*
- *Podocarpus* 'Pringles' (Pringles Podocarpus)
- *Rapanea punctata* (Myrsine) \*
- *Rhaphiolepis indica* (Indian Hawthorn)

## SHRUBS

- *Capparis cynophallophora* (Jamaican Caper) \*
- *Cephalanthus occidentalis* (Buttonbush) \*
- *Coccoloba uvifera* (Seagrape) \*
- *Hamelia patens* (Firebush) \*
- *Illicium parviflorum* (Anise) \*
- *Ligustrum japonicum* (Privet)
- *Myrcianthes fragrans* (Simpson's Stopper) \*
- *Myrica cerifera* (Wax Myrtle) \*
- *Podocarpus macrophyllus* (Podocarpus Maki)
- *Vaccinium arboreum* (Sparkleberry) \*
- *Viburnum odoratissimum* (Sweet Viburnum)
- *Viburnum suspensum* (Sandankwa Viburnum)

Tall

- *Ardisia escallonioides* (Marlberry) \*
- *Cephalanthus occidentalis* (Buttonbush) \*
- *Hamelia patens* (Firebush) \*
- *Illicium parviflorum* (Anise) \*
- *Ligustrum japonicum* (Privet)
- *Myrcianthes fragrans* (Simpson's Stopper) \*
- *Podocarpus macrophyllus* (Podocarpus Maki)
- *Psychothria bahamensis* (Bahama Coffee) \*
- *Viburnum odoratissimum* (Sweet Viburnum)
- *Viburnum suspensum* (Sandankwa Viburnum)

## Group C1 and C2- Along Property Lines and Fences

**Characteristics:** dense foliage, upright form, evergreen, sturdy, fast-growing

### SUN

### SHADE

### SHRUBS

#### Medium

- *Allamanda nerifolia* (Bush Allamanda) \*
- *Eugenia foetida* (Stopper) \*
- *Ilex burfordii* (Buford's Holly)
- *Podocarpus 'Pringles'* (Pringles Podocarpus)

- *Callicarpa americana* (Beautyberry) \*
- *Podocarpus 'Pringles'* (Pringles Podocarpus)
- *Psychotria nervosa* (Wild Coffee) \*
- *Ranapea punctata* (Myrsine) \*

#### Tall

- *Chrysobalanus icaco* (Cocoplum) \*
- *Coccoloba uvifera* (Seagrape) \*
- *Forestiera segregata* (Florida Privet) \*
- *Ilex vomitoria* (Yaupon Holly) \*
- *Illicium parviflorum* (Anise) \*
- *Ligustrum japonicum* (Privet)
- *Myrcianthes fragrans* (Simpson's Stopper) \*
- *Myrica cerifera* (Wax Myrtle) \*
- *Podocarpus gracillior* (Fern-leaf Podocarpus)
- *Podocarpus microphyllus* (Podocarpus Maki)
- *Viburnum obovatum* (Walter's Viburnum) \*
- *Viburnum odoratissimum* (Sweet Viburnum)
- *Viburnum suspensum* (Sandankwa Viburnum)

- *Agarista populifolia* (Pipestem) \*
- *Ardisia escallonioides* (Marlberry) \*
- *Illicium parviflorum* (Anise) \*
- *Ligustrum japonicum* (Privet)
- *Myrcianthes fragrans* (Simpson's Stopper) \*
- *Podocarpus gracillior* (Fern Leaf Podocarpus)
- *Podocarpus microphyllus* (Maki Podocarpus)
- *Viburnum odoratissimum* (Sweet Viburnum)
- *Viburnum suspensum* (Sandankwa Viburnum)

### VINES

- *Lonicera sempervirens* (Coral Honeysuckle) \*
- *Bignonia capreolata* (Cross Vine) \*
- *Campsis radicans* (Red Trumpet Vine) \*
- *Pentalinon luteum* (Native Allamanda Vine) \*
- *Pandorea jasminoides* (Pandorea Vine)

- *Lonicera sempervirens* (Coral Honeysuckle) \*
- *Bignonia capreolata* (Cross Vine) \*
- *Campsis radicans* (Red Trumpet Vine) \*



## Group D- Under Trees

**Characteristics:** shallow roots, vines/spreading

### SUN

#### Groundcover

- *Agapanthus* spp. (Lily of the Nile)
- *Aptenia cordifolia* (Baby Sun Rose)
- *Arachis glabrata* (Perennial Peanut)
- *Bulbine* spp.
- *Dietes iridioides* (African Iris)
- *Ernodea littoralis* (Beach Creeper) \*
- *Evolvulus* (Blue Daze)
- *Gaillardia pulchella* (Blanket Flower) \*
- *Helianthus debilis* (Dune Sunflower) \*
- *Hemerocallis* spp. (Daylily)
- *Ipomoea imperati* (Beach Morning Glory) \*
- *Ipomoea pes-caprae* (Railroad Vine) \*
- *Iva imbricate* (Beach Elder) \*
- *Licania michauxii* (Gopher Apple) \*
- *Mimosa strigillosa* (Sunshine Mimosa) \*
- *Phyla nodiflora* (Fogfruit) \*
- *Salvia misella* (Creeping Sage) \*
- *Sesuvium portulacastrum* (Seaside Purslane) \*
- *Tulbaghia violacea* (Society Garlic)

### SHADE

- *Ajuga reptans* (Ajuga)
- *Blechnum serrulatum* (Swamp Fern) \*
- *Crytomium falcatum* (Holly Fern) \*
- *Dianella tasmanica* (Flax Lily)
- *Liriope muscari* (Monkey Grass)
- *Mitchella repens* (Partridgeberry) \*
- *Ophiopogon japonica* (Mondo grass)
- *Osmunda cinnamomea* (Cinnamon Fern) \*
- *Trachelospermum asiaticum* (Asiatic Jasmine)
- *Woodwardia areolata* (Netted Chain Fern) \*

#### Vines

- *Bignonia capreolata* (Cross Vine) \*
- *Campsis radicans* (Trumpet Vine) \*
- *Lonicera sempervirens* (Coral honeysuckle) \*
- *Passiflora incarnata* (Passion Flower) \*
- *Pentalinon luteum* (Yellow Mandevilla) \*
- *Symphotrichum carolinianum* (Climbing Aster) \*

- *Bignonia capreolata* (Trumpet Vine) \*
- *Campsis radicans* (Cross Vine) \*
- *Lonicera sempervirens* (Coral honeysuckle) \*
- *Passiflora incarnata* (Passion Flower) \*

## Group E- Specialty Gardens- Rain Gardens/Downspouts

**Characteristics:** wet feet, small size, groundcover, clumping, water movement

**SUN**

**SHADE**

### Groundcovers

- *Arachis glabrata* (Perennial Peanut)
- *Hymenocallis* (Spider Lily) \*
- *Phyla nodiflora* (Fogfruit) \*
- *Sisyrinchium angustifolium* (Blue Eyed Grass) \*
- *Spartina bakeri* (Sand Cordgrass) \*
- *Spartina patens* (Salt Marsh Cordgrass) \*
- *Tulbaghia violacea* (Society Garlic)

- *Hymenocallis* (Spider Lily) \*

\*Also see table of wildflowers and ornamental grasses

## Group E- Specialty Gardens- Butterfly

**Characteristics:** Colorful plants: red, yellow, and orange

**SUN**

**SHADE**

- *Ardisia escallonioides* (Marlberry) \*
- *Capparis cynophallophora* (Jamaican Capper) \*
- *Eugenia foetida* (Stopper) \*
- *Hamelia patens* 'Nana' (Dwarf Firebush)
- *Phyla nodiflora* (Fogfruit) \*
- *Psychotria nervosa* (Wild Coffee) \*
- *Senna mexicana* 'Chapmanii' (Bahama Cassia) \*
- *Serenoa repens* (Saw Palmetto)
- *Sophora tomentosa* (Necklacepod) \*
- *Vaccinium arboreum* (Sparkleberry) \*
- *Vaccinium darrowii* (Darwin's Blueberry) \*
- *Zamia pumila* (Coontie) \*

- *Ardisia escallonioides* (Marlberry) \*
- *Psychotria nervosa* (Wild Coffee) \*
- *Serenoa repens* (Saw Palmetto) \*
- *Vaccinium arboreum* (Sparkleberry) \*
- *Zamia pumila* (Coontie) \*

## Group E- Specialty Gardens– Water edge

**Characteristics:** wet feet, small size, groundcover, clumping, water movement

### SUN

#### Groundcovers

- *Arachis glabrata* (Perennial Peanut)
- *Hymenocallis* (Spider Lily) \*
- *Phyla nodiflora* (Fogfruit) \*
- *Sisyrinchium angustifolium* (Blue Eyed Grass) \*
- *Spartina bakeri* (Sand Cordgrass) \*
- *Spartina patens* (Salt Marsh Cordgrass) \*
- *Tulbaghia violacea* (Society Garlic)

### SHADE

- *Hymenocallis* (Spider Lily) \*

\*Also see table of wildflowers and ornamental grasses

## Wildflowers and Grasses

- *Ageratum littoralis* (Beach Mistflower) \*
- *Asclepias perennis* (Swamp Milkweed) \*
- *Asclepias tuberosa* (Milkweed) \*
- *Berlandiera subcaulis* (Green Eyes) \*
- *Conradina* spp. (Scrub Mint) \*
- *Coreopsis leavenworthii* (Tickseed) \*
- *Eragrostis elliotii* (Love grass) \*
- *Eragrostis spectabilis* (Purple Love Grass) \*
- *Helianthus debilis* (Dune Sunflower) \*
- *Lantana involucrata* (Wild Sage) \*
- *Liatris* spp (Blazing Star) \*
- *Muhlenbergia capillaries* (Muhly Grass) \*
- *Pentas lanceolata* (Pentas)
- *Polymnia uvedalia* (Bear's Foot) \*
- *Salvia coccinea* (Red Sage) \*
- *Solidago* spp.(Golden Rod)\*
- *Stachytarpheta jamaicensis* (Porterweed) \*
- *Tripsacum floridanum* (Fakahatchee Grass) \*
- *Uniola paniculata* (Sea Oats) \*
- *Vernonia angustifolia* (Ironweed) \*

## Perennials

## VINES

- *Passiflora incarnata* (Passion flower)\*
- *Passiflora suberosa* (Corky-stemmed Passion flower)\*



# Irrigation Recommendations

## First Two Weeks

Saturate root balls and surrounding 1" of soil of each new plant. Saturation can be determined by digging a test hole (next to the planted area) that is the same depth and diameter as the plant's root ball. Note the amount of water required to saturate the test hole. This will provide an estimation of the amount of water needed per plant each day. Determine if the plants are overwatered by digging a hole next to the root ball about half of the rootball's depth, 2 to 3 hours after watering. If water flows between fingers when soil is squeezed, too much water was applied. If the soil is dry, more water is needed. If the soil holds together in clods, enough water has been applied.

## Next 4-5 Months

For trees and shrubs with less than 2" diameter trunks/canes, continue the above routine daily for 2 more weeks, every other day for 2 months, then twice weekly. Trees and shrubs with 2" to 4" diameter trunks/canes will need water daily for a month, every other day for 3 months, then weekly. Trees and shrubs with trunks/canes over 4" diameter need daily irrigation for 6 weeks, every other day for 5 months, and then weekly.

## Temporary Irrigation

After 4 months plants should be established. Temporary irrigation will be necessary only during periods of drought. Drip irrigation and soaker hoses can be installed by homeowners and used as irrigation sources during dry periods. Hand watering is also a simple irrigation method. During drought water trees and shrubs 2 to 3 times per week.

**Note:** This information was adapted from EDIS publication ENH857, *Irrigating Landscape Plants during Establishment*, which can be found at <http://edis.ifas.ufl.edu/EP113>.

## Rain Barrels

Rain barrels are a simple and convenient method for collecting rain water from the roof to be used for irrigation. The amount of captured water will depend on the size of the roof, the size of the barrel and the amount of rainfall. A rain barrel can be used with a roof with or without a gutter. If you don't have a gutter system you may be able to collect water that flows from the valleys of the roof. Remove the top of the barrel and use a screen cover to keep debris out of the barrel. If you have a gutter system it is best to put a downspout extender through the top of the barrel. To determine the size of the barrel use the general rule of thumb that 1" of rain on 1,000 sq. ft. of roof will yield approximately 600 gallons. If possible, elevate the rain barrel on a stand to improve water pressure for the outflow. Tanks should be cleaned out about once a year and the water should be used only for irrigation of landscape plants— do not use to irrigate edible plants. To learn more about capturing rainwater see *Rain Barrels: A Homeowner's Guide*, Southwest Florida Water Management District, [http://www.swfwmd.state.fl.us/publications/files/rain\\_barrels\\_guide.pdf](http://www.swfwmd.state.fl.us/publications/files/rain_barrels_guide.pdf).



This photo shows the use of a temporary, above ground irrigation system



# References and Publications

## UF and EDIS Publications

1. Black, R. Gilman, E., Knox, G., and Ruppert, K. 1994. ENH103/MG251: Mulches for the landscape. <http://edis.ifas.ufl.edu/MG251>.
2. Clark, M. and Acomb, G. 2008. Cisterns/Rain Barrels, <http://Hillsborough.fyn.ifas.ufl.edu/RainBarrels>.
3. Denny, G. and Hansen, G. 2010. ENH1156/EP416: Right plant, right place: The art and science of landscape design – Plant selection and siting. <http://edis.ifas.ufl.edu/EP416>.
4. Duryea, M. 2000. FOR80/FR079: Landscape Mulches; what are the choices in Florida. <http://edis.ifas.ufl.edu/FR079>.
5. Garner, A., Stevely, J., Smith, H., Hoppe, M., Floyd, T., & Hinchcliff, P. 2001. SP-191/EP079. A Guide to Environmentally Friendly Landscaping: Florida Yards and Neighborhoods Handbook. <http://edis.ifas.ufl.edu/ep079>.
6. Gilman, E. and Partin, T. 2007. ENH1056/EP309: Chapter 6 – Design Solutions for a More Wind-Resistant Urban Forest. <http://edis.ifas.ufl.edu/EP309>.
7. Gilman, E. and Black, R. 2005. CIR853/MG087: Pruning landscape trees and shrubs. <http://edis.ifas.ufl.edu/mg087>.
8. Gilman, E. and Sadowski, L. 1998. ENH1060/EP313: Selecting quality trees from the nursery. <http://edis.ifas.ufl.edu/ep313>.
9. Gilman, E. 2003. ENH856/EP112: Specifications for planting trees and shrubs in the Southeastern US. <http://edis.ifas.ufl.edu/ep112>.
10. Gilman, E. 998. ENH857/EP113: Irrigating landscape plants during establishment. <http://edis.ifas.ufl.edu/ep113>.
11. Haley, M. Dukes, M., Miller, G., and Haman, D. 2005. ABE355/AE287: Home irrigation and landscape combinations for water conservation in Florida. <http://edis.ifas.ufl.edu/ae287>.
1. Hansen, G. 2009. ENH1110/EP374: Design strategies for a sustainable home landscape. <http://edis.ifas.ufl.edu/ep374>.
2. Hansen, G. 2009. ENH1112/EP375: Landscape design: Ten important things to consider. <http://edis.ifas.ufl.edu/ep375>.
3. Hansen, G., Ramos, J., Felter, E.A. and White, C. 2010. ENH1135/EP396: Adopting a Florida-Friendly landscape: Steps for converting a traditional development landscape to a Florida-Friendly landscape. <http://edis.ifas.ufl.edu/ep396>.
4. Hansen, G. 2010. ENH1163/EP424: Landscape elements for a Florida-Friendly yard. <http://edis.ifas.ufl.edu/ep424>.
5. Meerow, A. and Black, R. 2003.EES43/EH143: Envirosclaping to conserve energy. <http://edis.ifas.ufl.edu/eh143>.
6. Momol, T., Marois, J., Perezny, K., & Olson, S. 2004. PP-193: Integrated disease management for vegetable crops in Florida. <http://edis.ifas.ufl.edu/pp-193>.
7. Shoher, A. and Mylavarapu, R. 2009. SL281/SS494: Soil sampling and testing for the home landscape and vegetable garden. <http://edis.ifas.ufl.edu/ss494>.
8. Smith, H. and Capinera, J. 2005. ENY-822: Natural enemies and biological control. <http://edis.ifas.ufl.edu/eny-822>.
9. Stephens, J.M., Park Brown, S., Treadwell, D., Webb, S., Gevens, A., Dunn, R.A., Kidder, G., Short, D., Simone, G.W. 2004. SP103/VH021: Florida vegetable gardening guide. <http://edis.ifas.ufl.edu/sp103>.
21. UF/IFAS (2007) A guide to Florida-Friendly Landscaping: Florida Yards and Neighborhoods Handbook. [fyn.ifas.edu/materials/handbook.pdf](http://fyn.ifas.edu/materials/handbook.pdf)